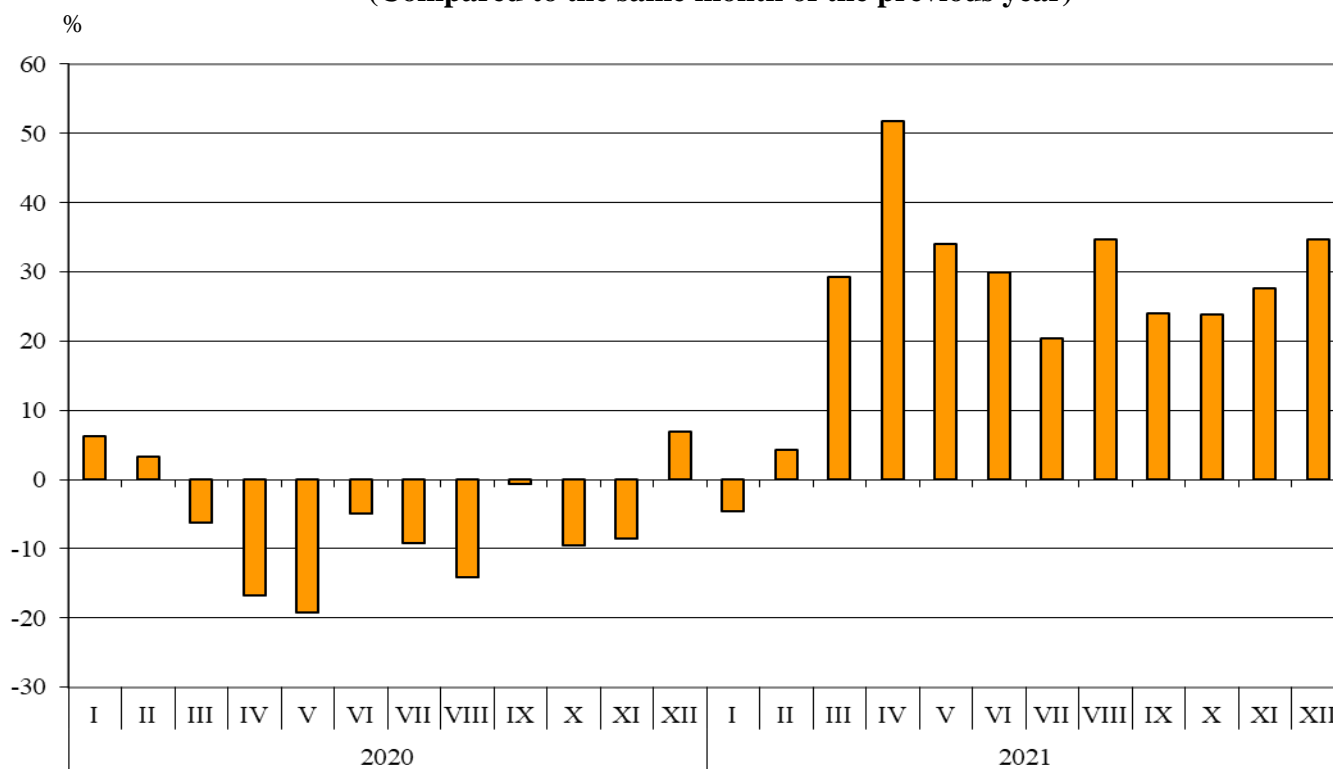


## TRADE IN GOODS OF BULGARIA IN 2021 - FINAL DATA

In **2021** the **goods exported** from Bulgaria amounted to 68 431.2 million BGN or 24.9% more than in 2020 (Annex, Tables 1 and 2). In comparing monthly data for 2021 with the data for the corresponding month of the previous year the highest growth in exports was observed in April (51.8%), while the fall was registered only in January (4.6%).

**Figure 1. Nominal value<sup>1</sup> change of exports of goods from Bulgaria in the period 2020 - 2021  
(Compared to the same month of the previous year)**

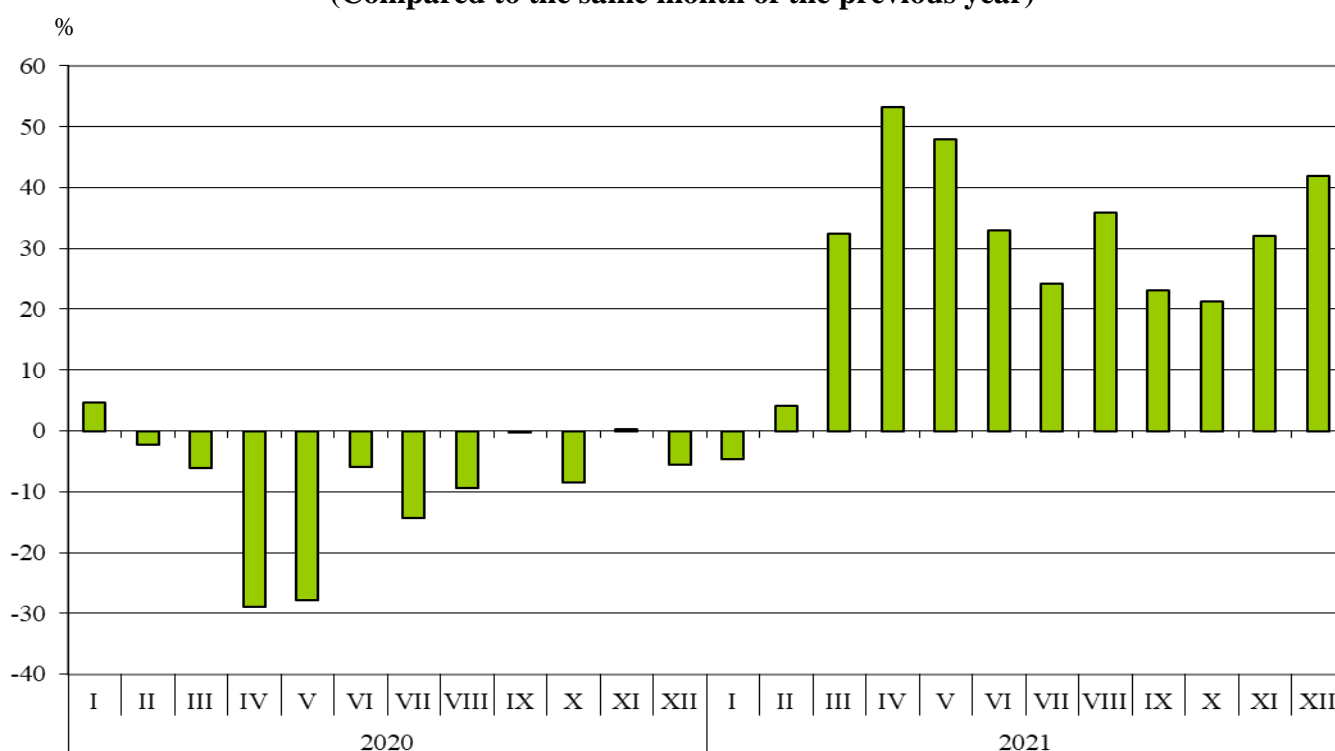


In the **exports** of goods from Bulgaria, distributed according to the **Standard International Trade Classification**, in 2021 compared to 2020 the largest growth was reported in the section 'Animal and vegetable oils, fats and waxes' (63.3%). Fall was observed only in the section 'Beverages and tobacco' (13.1%) (Annex, Table 4).

<sup>1</sup> Value changes at current prices.

The imported goods in 2021 were for 76 742.6 million BGN (at CIF prices)<sup>1</sup>, which is 27.6% more than the previous year (Annex, Tables 1 and 2). Analyzing the monthly data on imports in 2021 and the corresponding ones in 2020, the biggest increase was observed in April (53.3%). Decrease was registered only in January (4.7%).

**Figure 2. Nominal value<sup>2</sup> change of imports of goods to Bulgaria in the period 2020 - 2021  
(Compared to the same month of the previous year)**



In the imports of goods to Bulgaria, distributed according to the **Standard International Trade Classification**, in 2021 compared to the previous year the largest growth was registered in the section 'Mineral fuel, lubricants and related materials' (71.8%) while fall was not observed in any of the sections.

**Foreign trade balance** (exports FOB - import CIF) was negative in 2021 and amounted to 8 311.4 million BGN (Annex, Tables 1 and 2).

<sup>1</sup> Imports at FOB prices are calculated by BNB

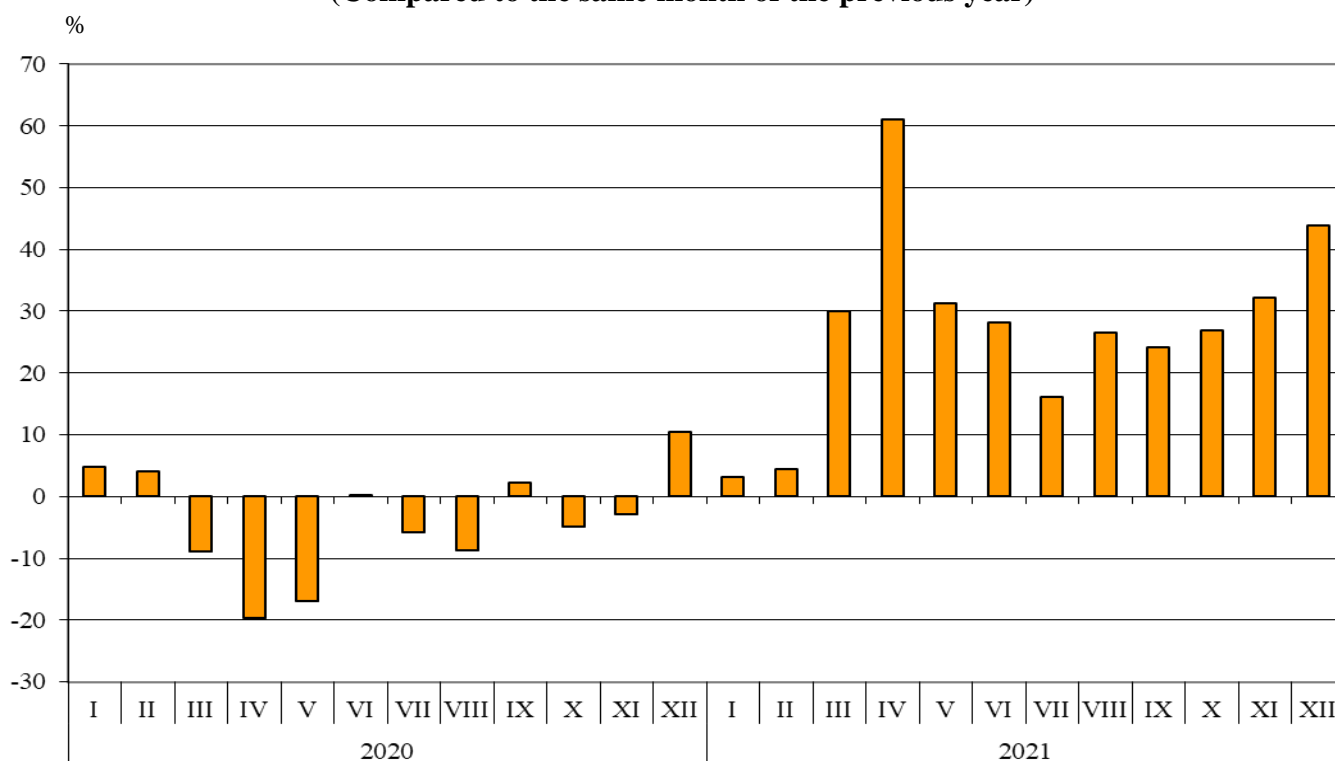
(<http://bnb.bg/Statistics/StExternalSector/StForeignTrade/StFTImports/index.htm?toLang= EN>).

<sup>2</sup> Value changes at current prices.

## Trade in goods of Bulgaria with the EU

In 2021 the **exports** of goods from Bulgaria **to the EU countries** increased by 26.3% compared to the previous year and amounted to 45 270.6 million BGN (Annex, Tables 1 and 2). Main trade partners of Bulgaria were Germany, Romania, Italy, Greece, France and Belgium, which accounted for 69.7% of the exports to the EU (Annex, Table 3).

**Figure 3. Nominal value<sup>1</sup> change of exports of goods from Bulgaria to EU in the period 2020 - 2021**  
(Compared to the same month of the previous year)

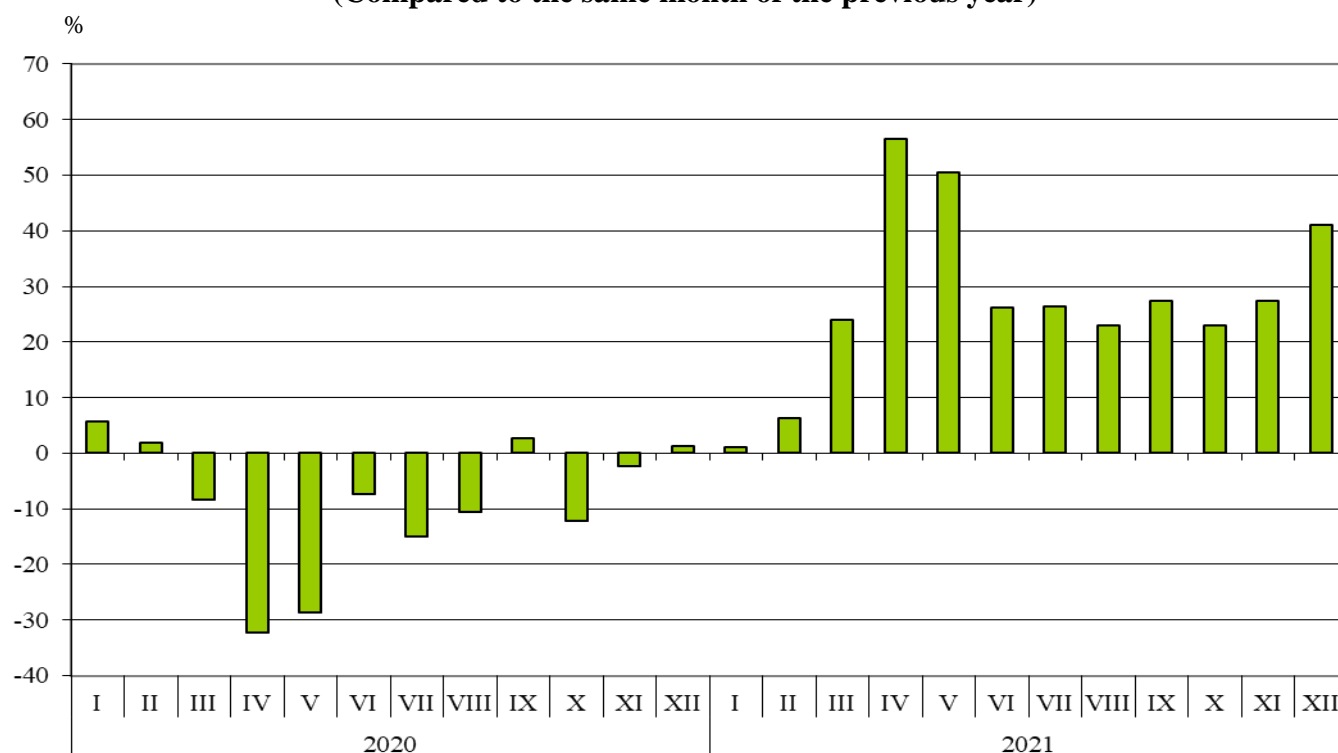


In the exports of goods from Bulgaria to the EU, distributed according to the **Standard International Trade Classification**, in 2021 compared to 2020 the largest growth was registered in section 'Animal and vegetable oils, fats and waxes' (105.6%) (Annex, Table 4). Fall was observed only in section 'Beverages and tobacco' (15.8%).

<sup>1</sup> Value changes at current prices.

The **imports** of goods to Bulgaria **from the EU countries** in 2021 increased by 26.7% compared to 2020 and amounted to 46 332.9 million BGN (Annex, Tables 1 and 2). The most significant amounts were reported for the goods imported from Germany, Romania, Italy, Greece and the Netherlands, which represent 59.8% from the imports from the EU.

**Figure 4. Nominal value<sup>1</sup> change of imports of goods to Bulgaria from EU in the period 2020 - 2021**  
(Compared to the same month of the previous year)



In the imports of goods from the EU, distributed according to the **Standard International Trade Classification**, in 2021 compared to the previous year the largest growth was registered in section 'Animal and vegetable oils, fats and waxes' (168.2%), while fall was not observed in any of the sections.

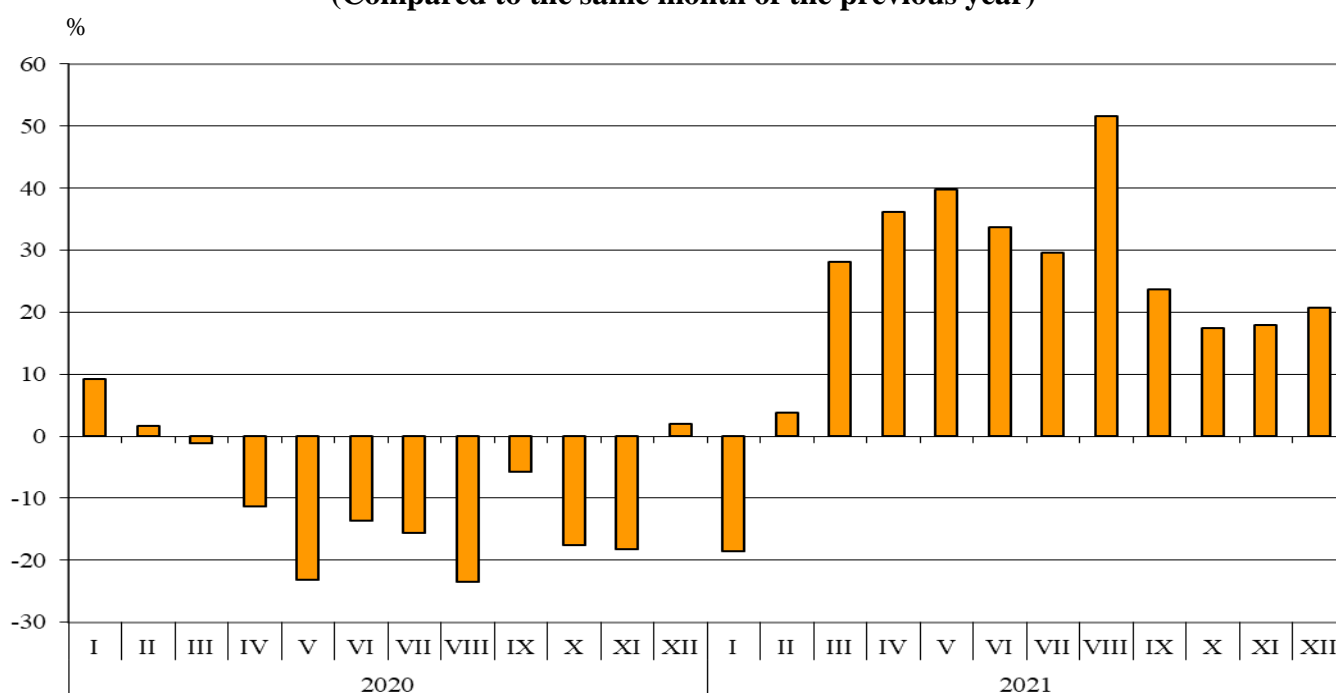
**Foreign trade balance** (exports FOB - import CIF) of Bulgaria **with the EU countries** in 2021 was negative and amounted to 1 062.3 million BGN (Annex, Table 1).

<sup>1</sup> Value changes at current prices.

## Bulgarian trade in goods with third countries

In 2021 the **exports** of goods from Bulgaria **to third countries** increased by 22.3% compared to the previous year and added up to 23 160.6 million BGN (Annex, Tables 1 and 2). Leading trade partners of Bulgaria were Turkey, China, the United States, Serbia, the United Kingdom, the Republic of North Macedonia and the Russian Federation, which accounted for 55.2% of the total exports to non EU countries (Annex, Table 3).

**Figure 5. Nominal value<sup>1</sup> change of exports of goods from Bulgaria to non EU countries  
in the period 2020 - 2021  
(Compared to the same month of the previous year)**

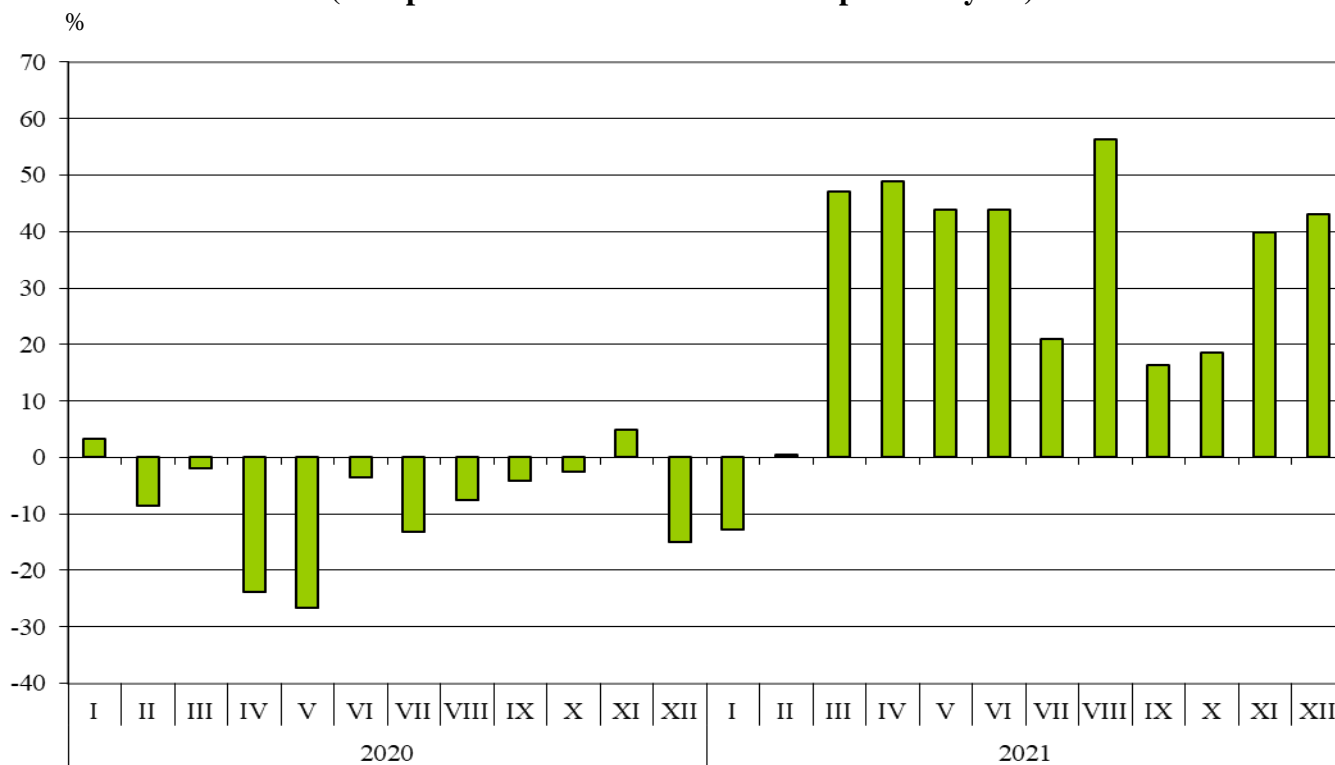


The **imports** of goods to Bulgaria **from third countries** in 2021 increased by 29.2% compared to 2020 and amounted to 30 409.7 million BGN (Annex, Tables 1 and 2). The largest amounts were reported for the goods imported from Turkey, the Russian Federation, China, Ukraine and Serbia whose share amounted to 62.9% of the total imports from non EU countries.

<sup>1</sup> Value changes at current prices.

**Figure 6. Nominal value<sup>1</sup> change of imports of goods to Bulgaria from non EU countries  
in the period 2020 - 2021**

**(Compared to the same month of the previous year)**



**Foreign trade balance** of Bulgaria (export FOB - import CIF) **with third countries** in 2021 was negative and amounted to 7 249.1 million BGN (Annex, Table 1).

<sup>1</sup> Value changes at current prices.

Annex

Table 1

Exports, imports and trade balance of Bulgaria in 2020 and 2021 by months

Final data

(Million BGN)

Months/Periods	Exports - FOB			Imports - CIF <sup>1</sup>			Trade balance - FOB/CIF		
	Total	EU	Non EU	Total	EU	Non EU	Total	EU	Non EU
I.2020	4990.9	3207.9	1783.0	5299.0	3098.6	2200.4	-308.1	109.3	-417.4
II.2020	4849.6	3174.6	1675.0	5216.8	3227.4	1989.4	-367.2	-52.8	-314.4
III.2020	4506.0	2883.5	1622.5	5053.6	3223.8	1829.8	-547.6	-340.3	-207.3
<b>I - III.2020</b>	<b>14346.5</b>	<b>9266.0</b>	<b>5080.5</b>	<b>15569.4</b>	<b>9549.8</b>	<b>6019.6</b>	<b>-1222.9</b>	<b>-283.8</b>	<b>-939.1</b>
IV.2020	3890.5	2444.9	1445.6	3964.4	2299.7	1664.7	-73.9	145.2	-219.1
V.2020	3844.5	2558.3	1286.2	4084.8	2447.9	1636.9	-240.3	110.4	-350.7
VI.2020	4412.7	2959.7	1453.0	4842.2	2973.3	1868.9	-429.5	-13.6	-415.9
<b>IV - VI.2020</b>	<b>12147.7</b>	<b>7962.9</b>	<b>4184.8</b>	<b>12891.4</b>	<b>7720.9</b>	<b>5170.5</b>	<b>-743.7</b>	<b>242.0</b>	<b>-985.7</b>
<b>I - VI.2020</b>	<b>26494.2</b>	<b>17228.9</b>	<b>9265.3</b>	<b>28460.8</b>	<b>17270.7</b>	<b>11190.1</b>	<b>-1966.6</b>	<b>-41.8</b>	<b>-1924.8</b>
VII.2020	4865.8	3299.3	1566.5	5113.5	3125.4	1988.1	-247.7	173.9	-421.6
VIII.2020	4160.8	2795.2	1365.6	4602.3	2826.3	1776.0	-441.5	-31.1	-410.4
IX.2020	4885.8	3177.8	1708.0	5361.9	3270.5	2091.4	-476.1	-92.7	-383.4
<b>VII - IX.2020</b>	<b>13912.4</b>	<b>9272.3</b>	<b>4640.1</b>	<b>15077.7</b>	<b>9222.2</b>	<b>5855.5</b>	<b>-1165.3</b>	<b>50.1</b>	<b>-1215.4</b>
<b>I - IX.2020</b>	<b>40406.6</b>	<b>26501.2</b>	<b>13905.4</b>	<b>43538.5</b>	<b>26492.9</b>	<b>17045.6</b>	<b>-3131.9</b>	<b>8.3</b>	<b>-3140.2</b>
X.2020	4977.1	3324.9	1652.2	5674.6	3355.0	2319.6	-697.5	-30.1	-667.4
XI.2020	4907.5	3309.6	1597.9	5721.9	3546.8	2175.1	-814.4	-237.2	-577.2
XII.2020	4488.1	2709.6	1778.5	5192.1	3187.3	2004.8	-704.0	-477.7	-226.3
<b>X - XII.2020</b>	<b>14372.7</b>	<b>9344.1</b>	<b>5028.6</b>	<b>16588.6</b>	<b>10089.1</b>	<b>6499.5</b>	<b>-2215.9</b>	<b>-745.0</b>	<b>-1470.9</b>
<b>I - XII.2020</b>	<b>54779.3</b>	<b>35845.3</b>	<b>18934.0</b>	<b>60127.1</b>	<b>36582.0</b>	<b>23545.1</b>	<b>-5347.8</b>	<b>-736.7</b>	<b>-4611.1</b>
I.2021	4761.6	3310.9	1450.7	5050.2	3129.4	1920.8	-288.6	181.5	-470.1
II.2021	5057.2	3317.9	1739.3	5432.4	3433.6	1998.8	-375.2	-115.7	-259.5
III.2021	5824.0	3746.3	2077.7	6689.0	3998.0	2691.0	-865.0	-251.7	-613.3
<b>I - III.2021</b>	<b>15642.8</b>	<b>10375.1</b>	<b>5267.7</b>	<b>17171.6</b>	<b>10561.0</b>	<b>6610.6</b>	<b>-1528.8</b>	<b>-185.9</b>	<b>-1342.9</b>
IV.2021	5905.3	3937.1	1968.2	6078.1	3599.7	2478.4	-172.8	337.4	-510.2
V.2021	5155.3	3357.6	1797.7	6043.0	3686.5	2356.5	-887.7	-328.9	-558.8
VI.2021	5734.5	3790.9	1943.6	6440.2	3751.9	2688.3	-705.7	39.0	-744.7
<b>IV - VI.2021</b>	<b>16795.1</b>	<b>11085.6</b>	<b>5709.5</b>	<b>18561.3</b>	<b>11038.1</b>	<b>7523.2</b>	<b>-1766.2</b>	<b>47.5</b>	<b>-1813.7</b>
<b>I - VI.2021</b>	<b>32437.9</b>	<b>21460.7</b>	<b>10977.2</b>	<b>35732.9</b>	<b>21599.1</b>	<b>14133.8</b>	<b>-3295.0</b>	<b>-138.4</b>	<b>-3156.6</b>
VII.2021	5861.3	3830.2	2031.1	6353.2	3949.7	2403.5	-491.9	-119.5	-372.4
VIII.2021	5605.9	3536.7	2069.2	6253.2	3475.9	2777.3	-647.3	60.8	-708.1
IX.2021	6057.0	3945.2	2111.8	6601.0	4167.3	2433.7	-544.0	-222.1	-321.9
<b>VII - IX.2021</b>	<b>17524.2</b>	<b>11312.1</b>	<b>6212.1</b>	<b>19207.4</b>	<b>11592.9</b>	<b>7614.5</b>	<b>-1683.2</b>	<b>-280.8</b>	<b>-1402.4</b>
<b>I - IX.2021</b>	<b>49962.1</b>	<b>32772.8</b>	<b>17189.3</b>	<b>54940.3</b>	<b>33192.0</b>	<b>21748.3</b>	<b>-4978.2</b>	<b>-419.2</b>	<b>-4559.0</b>
X.2021	6161.4	4221.7	1939.7	6880.2	4127.9	2752.3	-718.8	93.8	-812.6
XI.2021	6262.2	4377.3	1884.9	7558.6	4518.8	3039.8	-1296.4	-141.5	-1154.9
XII.2021	6045.5	3898.8	2146.7	7363.5	4494.2	2869.3	-1318.0	-595.4	-722.6
<b>X - XII.2021</b>	<b>18469.1</b>	<b>12497.8</b>	<b>5971.3</b>	<b>21802.3</b>	<b>13140.9</b>	<b>8661.4</b>	<b>-3333.2</b>	<b>-643.1</b>	<b>-2690.1</b>
<b>I - XII.2021</b>	<b>68431.2</b>	<b>45270.6</b>	<b>23160.6</b>	<b>76742.6</b>	<b>46332.9</b>	<b>30409.7</b>	<b>-8311.4</b>	<b>-1062.3</b>	<b>-7249.1</b>

<sup>1</sup> Imports at FOB prices are calculated by BNB

([http://bnb.bg/Statistics/StExternalSector/StForeignTrade/StFTImports/index.htm?toLang=\\_EN&toLang=\\_EN](http://bnb.bg/Statistics/StExternalSector/StForeignTrade/StFTImports/index.htm?toLang=_EN&toLang=_EN)).

Table 2

**Value changes of exports and imports of Bulgaria in 2021  
compared to the same period of the previous year**

(Per cent)

Months/Periods	Exports - FOB			Imports - CIF		
	Total	EU	Non EU	Total	EU	Non EU
I	-4.6	3.2	-18.6	-4.7	1.0	-12.7
II	4.3	4.5	3.8	4.1	6.4	0.5
III	29.2	29.9	28.1	32.4	24.0	47.1
<b>I - III</b>	<b>9.0</b>	<b>12.0</b>	<b>3.7</b>	<b>10.3</b>	<b>10.6</b>	<b>9.8</b>
IV	51.8	61.0	36.2	53.3	56.5	48.9
V	34.1	31.2	39.8	47.9	50.6	44.0
VI	30.0	28.1	33.8	33.0	26.2	43.8
<b>IV - VI</b>	<b>38.3</b>	<b>39.2</b>	<b>36.4</b>	<b>44.0</b>	<b>43.0</b>	<b>45.5</b>
<b>I - VI</b>	<b>22.4</b>	<b>24.6</b>	<b>18.5</b>	<b>25.6</b>	<b>25.1</b>	<b>26.3</b>
VII	20.5	16.1	29.7	24.2	26.4	20.9
VIII	34.7	26.5	51.5	35.9	23.0	56.4
IX	24.0	24.1	23.6	23.1	27.4	16.4
<b>VII - IX</b>	<b>26.0</b>	<b>22.0</b>	<b>33.9</b>	<b>27.4</b>	<b>25.7</b>	<b>30.0</b>
<b>I - IX</b>	<b>23.6</b>	<b>23.7</b>	<b>23.6</b>	<b>26.2</b>	<b>25.3</b>	<b>27.6</b>
X	23.8	27.0	17.4	21.2	23.0	18.7
XI	27.6	32.3	18.0	32.1	27.4	39.8
XII	34.7	43.9	20.7	41.8	41.0	43.1
<b>X - XII</b>	<b>28.5</b>	<b>33.8</b>	<b>18.7</b>	<b>31.4</b>	<b>30.2</b>	<b>33.3</b>
<b>I - XII</b>	<b>24.9</b>	<b>26.3</b>	<b>22.3</b>	<b>27.6</b>	<b>26.7</b>	<b>29.2</b>



Table 3

**Exports, imports and trade balance by groups of countries and main partner countries<sup>1</sup> of Bulgaria in 2020 and 2021**

Countries and groups of countries	Exports - FOB			Imports - CIF			Trade balance - FOB/CIF	
	2020	2021	Change compared to the same period of the previous year - %	2020	2021	Change compared to the same period of the previous year - %	2020	2021
	Million BGN			Million BGN			Million BGN	
Total	54779.3	68431.2	24.9	60127.1	76742.6	27.6	-5347.8	-8311.4
EU	35845.3	45270.6	26.3	36582.0	46332.9	26.7	-736.7	-1062.3
Austria	1049.9	1345.5	28.2	1614.2	1870.2	15.9	-564.3	-524.7
Belgium	1903.8	2211.3	16.2	1143.5	1481.3	29.5	760.3	730.0
Croatia	323.1	636.5	97.0	353.0	370.8	5.0	-29.9	265.7
Cyprus	227.7	274.5	20.6	91.0	149.6	64.4	136.7	124.9
Czechia	1266.2	1489.0	17.6	1596.1	1890.4	18.4	-329.9	-401.4
Denmark	380.1	645.0	69.7	290.5	348.7	20.0	89.6	296.3
Estonia	41.1	68.3	66.2	52.3	87.4	67.1	-11.2	-19.1
Finland	126.4	151.7	20.0	157.1	166.2	5.8	-30.7	-14.5
France	2100.4	2478.3	18.0	1736.1	2016.5	16.2	364.3	461.8
Germany	8773.8	10135.1	15.5	7262.2	9391.5	29.3	1511.6	743.6
Greece	3637.8	4744.0	30.4	2965.5	4209.3	41.9	672.3	534.7
Hungary	951.9	1249.7	31.3	2346.5	2805.8	19.6	-1394.6	-1556.1
Ireland	129.8	128.0	-1.4	362.7	497.6	37.2	-232.9	-369.6
Italy	3760.3	5128.0	36.4	4261.8	5059.2	18.7	-501.5	68.8
Latvia	83.7	75.5	-9.8	52.6	62.0	17.9	31.1	13.5
Lithuania	160.4	170.8	6.5	142.1	176.0	23.9	18.3	-5.2
Luxembourg	30.0	110.5	268.3	75.8	107.9	42.3	-45.8	2.6
Malta	46.9	56.5	20.5	59.8	27.6	-53.8	-12.9	28.9
Netherlands	1440.1	1703.2	18.3	2382.6	3252.6	36.5	-942.5	-1549.4
Poland	1359.6	1716.8	26.3	2224.1	2738.5	23.1	-864.5	-1021.7
Portugal	202.6	251.0	23.9	128.3	240.2	87.2	74.3	10.8
Romania	4976.0	6864.9	38.0	4397.3	5784.5	31.5	578.7	1080.4
Slovakia	526.7	565.9	7.4	838.2	958.6	14.4	-311.5	-392.7
Slovenia	359.9	419.9	16.7	458.9	570.6	24.3	-99.0	-150.7
Spain	1308.8	1860.7	42.2	1145.9	1448.6	26.4	162.9	412.1
Sweden	483.5	533.0	10.2	368.8	485.1	31.5	114.7	47.9
Not specified	194.8	257.0	31.9	75.1	136.2	81.4	119.7	120.8

<sup>1</sup> Partner country:

- In case of exports (or dispatches) is the country (or Member State) of final destination of the goods.
- In case of imports (or arrivals) is the country (or Member State) of consignment of the goods.

Table 3

**Exports, imports and trade balance by groups of countries and main partner countries<sup>1</sup> of Bulgaria in 2020 and 2021**

(Continued)

(Continued)

Countries and groups of countries	Exports - FOB			Imports - CIF			Trade balance - FOB/CIF	
	2020	2021	Change compared to the same period of the previous year - %	2020	2021	Change compared to the same period of the previous year - %	2020	2021
	Million BGN			Million BGN			Million BGN	
Non EU countries	18934.0	23160.6	22.3	23545.1	30409.7	29.2	-4611.1	-7249.1
CIS <sup>2</sup>	1268.2	1322.2	4.3	3888.0	6267.7	61.2	-2619.8	-4945.5
of which:								
Kazakhstan	64.8	76.0	17.3	27.4	3.8	-86.1	37.4	72.2
Russian Federation	826.6	853.8	3.3	3674.2	5827.8	58.6	-2847.6	-4974.0
OECD <sup>3</sup>	7343.5	9107.6	24.0	7852.2	9944.2	26.6	-508.7	-836.6
of which:								
Canada	232.3	140.6	-39.5	295.0	242.9	-17.7	-62.7	-102.3
Chile	23.0	32.5	41.3	267.8	539.4	101.4	-244.8	-506.9
Israel	204.7	379.4	85.3	127.1	336.3	164.6	77.6	43.1
Japan	99.9	106.2	6.3	297.9	400.8	34.5	-198.0	-294.6
Korea, Republic of	185.9	423.1	127.6	262.3	277.2	5.7	-76.4	145.9
Turkey	3531.6	4206.9	19.1	4264.5	6011.8	41.0	-732.9	-1804.9
United Kingdom <sup>4</sup>	1303.7	1257.0	-3.6	763.4	611.7	-19.9	540.3	645.3
United States	1105.1	1699.0	53.7	773.3	558.4	-27.8	331.8	1140.6
EFTA <sup>5</sup>	447.8	566.8	26.6	528.9	623.1	17.8	-81.1	-56.3
of which:								
Norway	91.3	104.3	14.2	44.7	57.4	28.4	46.6	46.9
Switzerland	354.2	458.1	29.3	478.0	561.0	17.4	-123.8	-102.9

<sup>1</sup> Partner country:

- In case of exports (or dispatches) is the country (or Member State) of final destination of the goods.

- In case of imports (or arrivals) is the country (or Member State) of consignment of the goods.

<sup>2</sup> CIS includes: Azerbaijan; Armenia; Belarus; Kazakhstan; Kyrgyz Republic; Moldova, Republic of; Russian Federation; Tajikistan; Turkmenistan and Uzbekistan.

<sup>3</sup> OECD includes: Australia; Virgin Islands (US); United States; Iceland; Canada; Chile; Mexico; New Zealand; Norway; Korea, Republic of; Turkey; United Kingdom; Switzerland; Japan and Israel.

<sup>4</sup> The United Kingdom includes: Northern Ireland; Great Britain; Channel Islands and Isle of Man.

<sup>5</sup> EFTA includes: Norway; Switzerland; Iceland and Liechtenstein.

Table 3

**Exports, imports and trade balance by groups of countries and main partner countries<sup>1</sup> of Bulgaria in 2020 and 2021**

(Continued and end)

Countries and groups of countries	Exports - FOB			Imports - CIF			Trade balance - FOB/CIF	
	2020	2021	Change compared to the same period of the previous year - %	2020	2021	Change compared to the same period of the previous year - %	2020	2021
	Million BGN			Million BGN			Million BGN	
Countries not included in the upper groups								
Albania	174.5	222.6	27.6	76.8	79.1	3.0	97.7	143.5
Bosnia and Herzegovina	158.3	180.7	14.2	41.2	58.0	40.8	117.1	122.7
Brazil	85.7	91.5	6.8	203.4	356.6	75.3	-117.7	-265.1
China	1806.3	2198.7	21.7	3057.2	4148.2	35.7	-1250.9	-1949.5
Egypt	328.8	465.9	41.7	659.2	513.8	-22.1	-330.4	-47.9
Georgia	258.9	380.0	46.8	923.2	724.1	-21.6	-664.3	-344.1
India	222.3	277.6	24.9	283.3	392.5	38.5	-61.0	-114.9
Indonesia	69.5	129.2	85.9	235.8	59.7	-74.7	-166.3	69.5
Iran, Islamic Republic of	187.3	166.9	-10.9	40.3	116.6	189.3	147.0	50.3
Peru	14.2	9.0	-36.6	539.1	617.2	14.5	-524.9	-608.2
Republic of North Macedonia	851.9	1124.6	32.0	592.6	728.0	22.8	259.3	396.6
Serbia	969.2	1453.8	50.0	1202.6	1498.4	24.6	-233.4	-44.6
Singapore	39.9	56.3	41.1	66.8	80.1	19.9	-26.9	-23.8
South Africa	215.2	165.7	-23.0	56.0	78.2	39.6	159.2	87.5
Syrian Arab Republic	6.8	8.5	25.0	0.8	3.9	387.5	6.0	4.6
Taiwan	80.1	74.9	-6.5	214.6	332.6	55.0	-134.5	-257.7
Tunisia	256.3	427.3	66.7	30.4	38.8	27.6	225.9	388.5
Ukraine	445.6	793.7	78.1	1141.2	1634.5	43.2	-695.6	-840.8
United Arab Emirates	139.2	157.9	13.4	57.6	71.6	24.3	81.6	86.3
Viet Nam	78.6	190.2	142.0	132.6	190.9	44.0	-54.0	-0.7

<sup>1</sup> Partner country:

- In case of exports (or dispatches) is the country (or Member State) of final destination of the goods.
- In case of imports (or arrivals) is the country (or Member State) of consignment of the goods.

Table 4

Exports, imports and trade balance of Bulgaria by sections of SITC, rev. 4 in 2020 and 2021

Sections by SITC	Exports - FOB			Imports - CIF			Trade balance - FOB/CIF	
	2020	2021	Change compared to the same period of the previous year - %	2020	2021	Change compared to the same period of the previous year - %	2020	2021
	Million BGN			Million BGN			Million BGN	
Total	54779.3	68431.2	24.9	60127.1	76742.6	27.6	-5347.8	-8311.4
of which EU <sup>1</sup>	35845.3	45270.6	26.3	36582.0	46332.9	26.7	-736.7	-1062.3
Food and live animals	6447.6	8049.0	24.8	5157.2	5802.1	12.5	1290.4	2246.9
of which EU	4090.4	4788.4	17.1	4009.9	4467.0	11.4	80.5	321.4
Beverages and tobacco	730.3	634.8	-13.1	1156.4	1256.3	8.6	-426.1	-621.5
of which EU	512.6	431.8	-15.8	915.5	957.8	4.6	-402.9	-526.0
Crude materials, inedible (except fuel)	3907.1	5218.5	33.6	6270.0	6811.9	8.6	-2362.9	-1593.4
of which EU	2356.3	3097.9	31.5	1277.2	1863.4	45.9	1079.1	1234.5
Mineral fuel, lubricants and related materials	2545.1	4114.2	61.7	5116.4	8792.4	71.8	-2571.3	-4678.2
of which EU	993.9	1973.7	98.6	1482.7	2625.5	77.1	-488.8	-651.8
Animal and vegetable oils, fats and waxes	834.6	1363.1	63.3	309.9	507.9	63.9	524.7	855.2
of which EU	460.7	947.0	105.6	133.9	359.1	168.2	326.8	587.9
Chemical and related products n.e.c.	6400.9	7989.1	24.8	9147.3	11845.5	29.5	-2746.4	-3856.4
of which EU	3848.5	5175.9	34.5	6921.8	8844.8	27.8	-3073.3	-3668.9
Manufactured goods classified chiefly by material	12502.3	15921.9	27.4	10172.3	13223.4	30.0	2330.0	2698.5
of which EU	8050.0	10543.4	31.0	5630.7	6892.7	22.4	2419.3	3650.7
Machinery and transport equipment	12975.7	15578.5	20.1	17070.3	21379.2	25.2	-4094.6	-5800.7
of which EU	9723.9	11701.2	20.3	12283.1	15517.0	26.3	-2559.2	-3815.8
Miscellaneous manufactured articles	8212.5	9305.3	13.3	5259.9	6546.5	24.5	2952.6	2758.8
of which EU	5649.2	6444.0	14.1	3511.2	4294.8	22.3	2138.0	2149.2
Commodities and transactions n.e.c.	223.2	256.8	15.1	467.4	577.4	23.5	-244.2	-320.6
of which EU	159.8	167.3	4.7	416.0	510.8	22.8	-256.2	-343.5