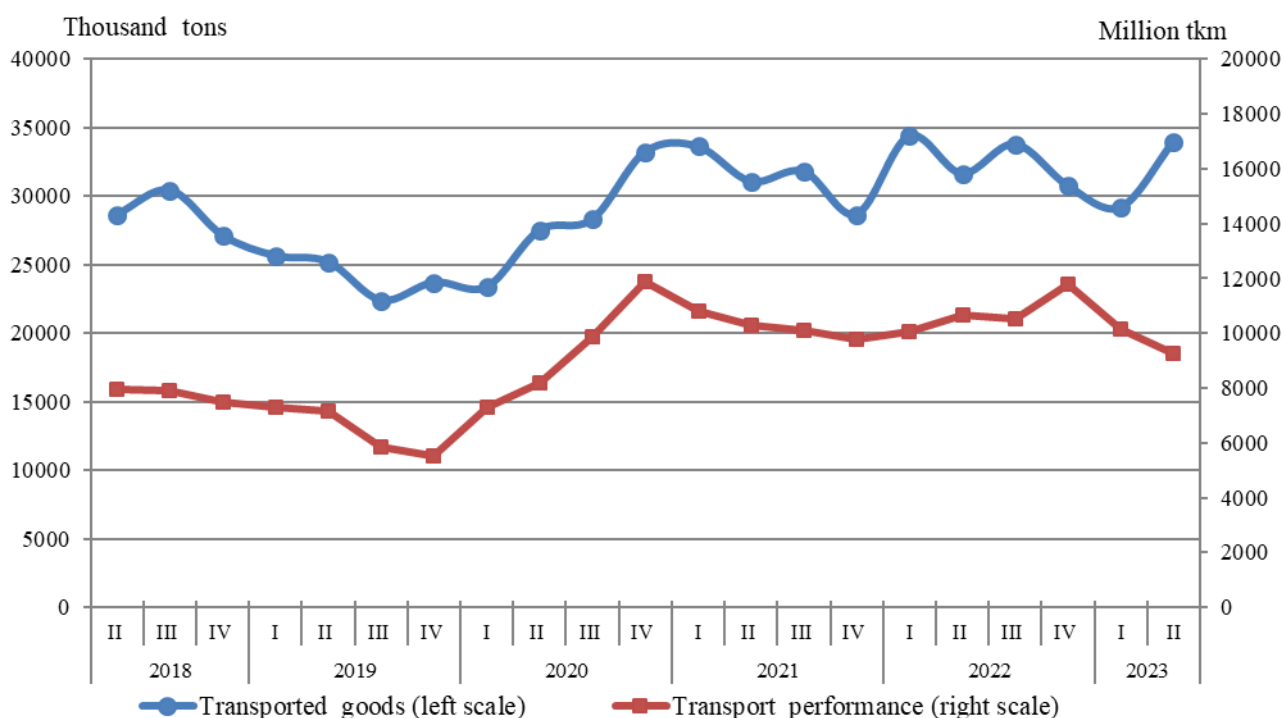


GOODS AND PASSENGERS CARRIED AND TRANSPORT PERFORMANCE BY MODE OF TRANSPORT IN THE SECOND QUARTER OF 2023 (PRELIMINARY DATA)

Quarterly changes

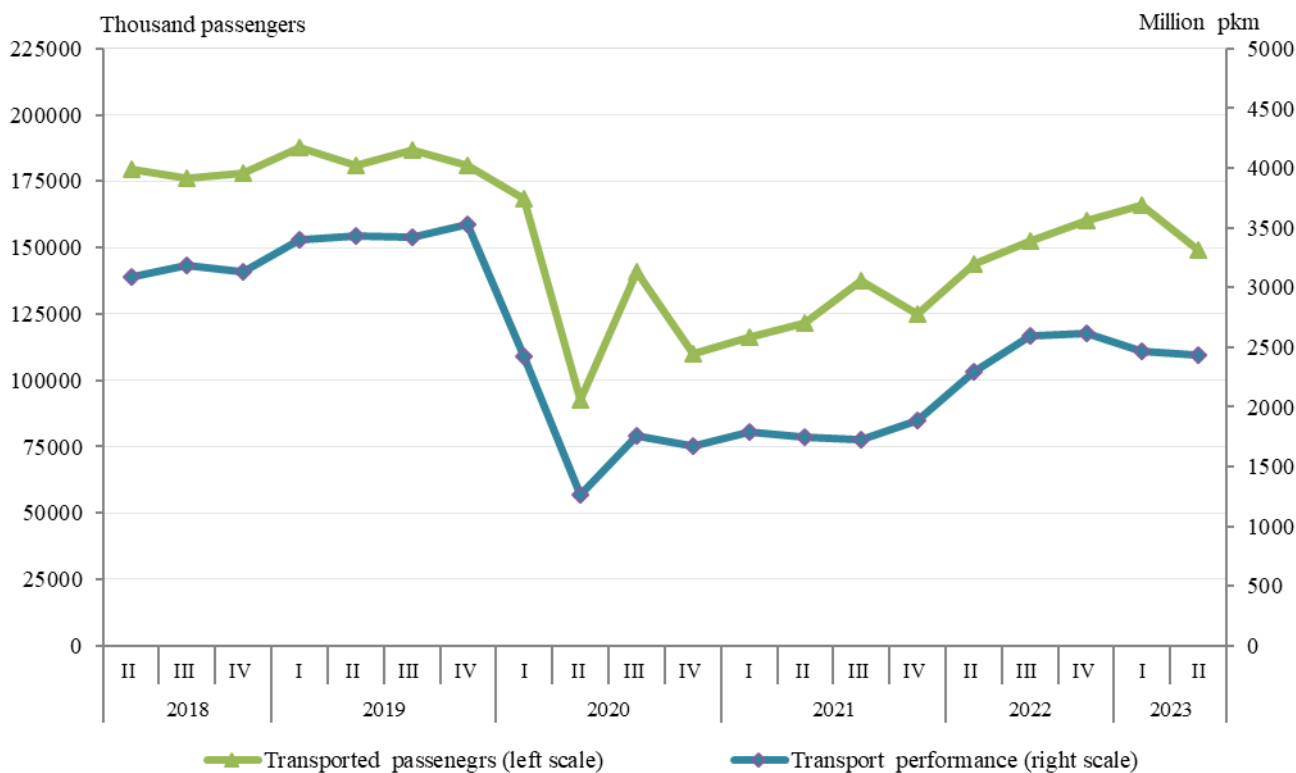
A 16.4% growth in goods transported by freight transport was registered in the second quarter of 2023, while the transport performance fell by 8.8% in comparison with the previous quarter (Figure 1). The data are preliminary and seasonally adjusted.

**Figure 1. Goods carried and transport performance by freight transport
(Seasonally adjusted data)**



Both the passengers carried by **passenger transport** (land, water and urban electrical transport) and the transport performance decreased by 10.3% and 1.3% respectively, compared to the previous quarter (Figure 2).

Figure 2. Transported passengers and transport performance by passenger transport (Seasonally adjusted data)



Annual changes

In the second quarter of 2023 the goods carried by freight land and water transport rose by 10.6%, while the transport performance declined by 12.4% in comparison with the same quarter of 2022. The data are preliminary.

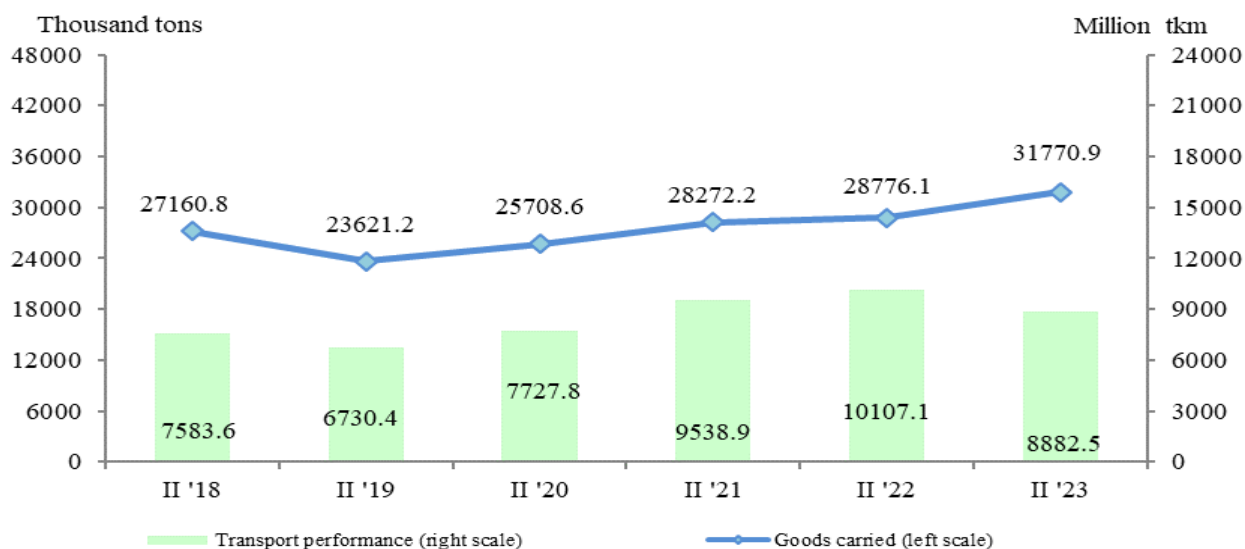
The number of transported passengers by the passenger transport (land, water and urban electrical transport) increased by 1.5% in the second quarter of 2023. The transport performance also recorded a growth of 6.4%.

Freight land transport

In the second quarter of 2023 the **transported goods** by the land transport were 31 770.9 thousand tons, which was 10.4% more than in the same quarter of 2022 (Figure 3). The national carriages increased by 8.2%, and international carriages by 14.9%.

The **transport performance** was 8 882.5 million tkm, which was 12.1% less than in the second quarter of 2022.

Figure 3. Transported goods and transport performance by land transport by quarters

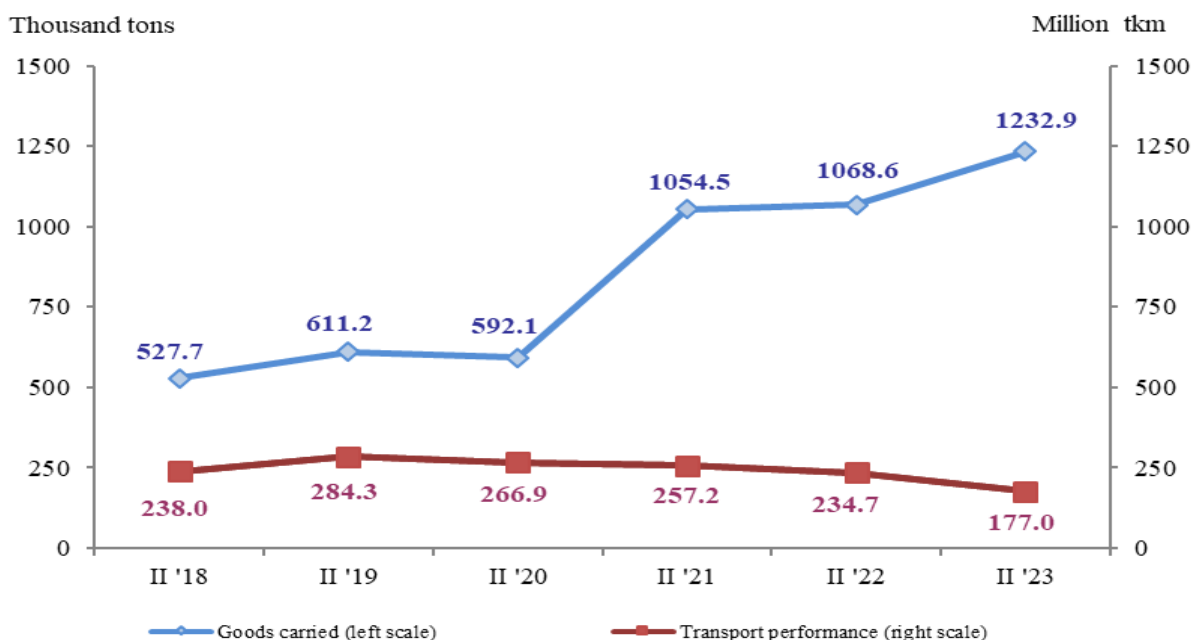


Freight water transport

The **transported goods** by the sea and inland waterway transport were 15.4% more than during the same quarter of 2022, due to the greater volumes of transported goods by the inland waterway transport (Figure 4).

The **transport performance**, measured in tonne-kilometres, fell by 24.6% due to the smaller average distance at which the goods were transported by the maritime and inland waterway transport.

Figure 4. Transported goods and transport performance by water transport by quarters

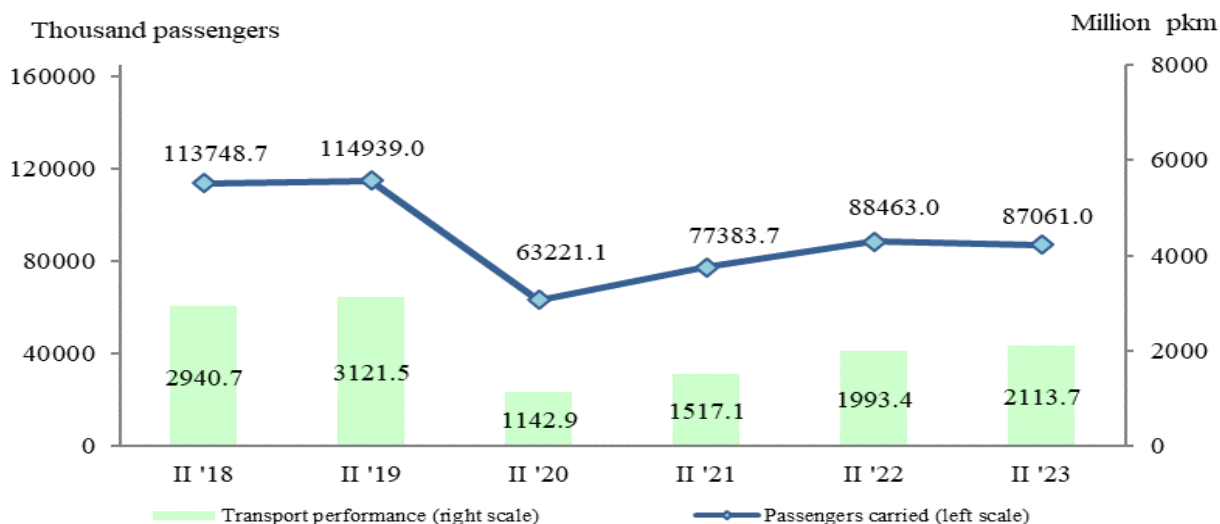


Passengers land transport

The number of **transported passengers** by the land transport in the second quarter of 2023 was 87 061.0 thousand, or 1.6% less than in the same period of the previous year (Figure 5). The decrease in bus transport was 1.5% and in railway transport - 2.7%.

The **transport performance** was 2 113.7 million passenger-kilometres, which represented a growth of 6.0% compared to the second quarter of 2022.

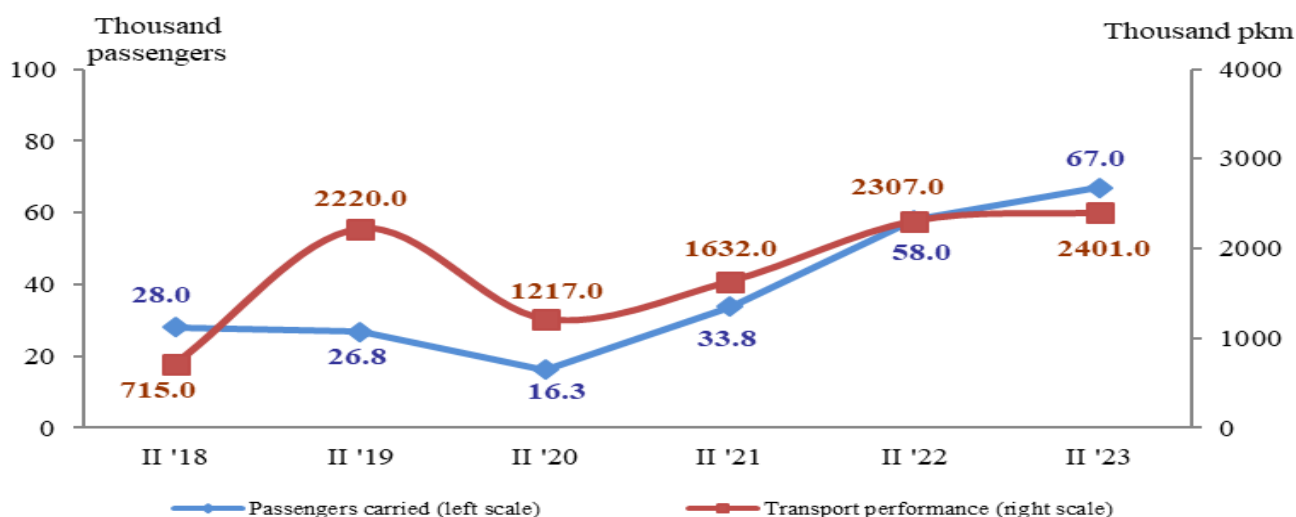
Figure 5. Transported passengers and transport performance by land transport by quarters



Passengers water transport

In the second quarter of 2023 there was an increase in both **transported passengers** by water transport (by 9.0 thousand passengers) and **transport performance** by 94.0 thousand pkm (Figure 6).

Figure 6. Transported passengers and transport performance by water transport by quarters

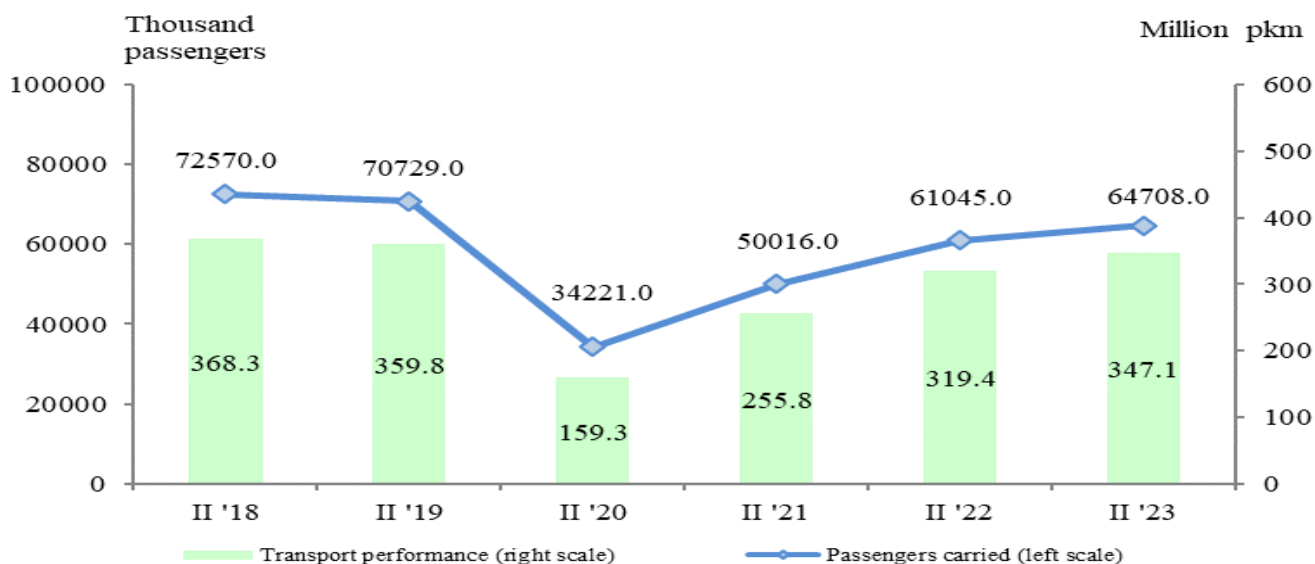


Urban electrical transport

During the period April - June 2023 the enterprises performing urban electrical transport transported **64 708.0 thousand passengers**, or 6.0% more than in the same period of 2022 (Figure 7). An increase was observed in all types of urban transport, as the electric bus transport registered the highest growth of 27.4%.

The **transport performance** also increased by 8.7% and reached 347.1 million pkm.

Figure 7. Transported passengers and transport performance by urban electrical transport by quarters





Methodological notes

Land freight transport covers the freight carriages by road and rail transport from vehicles with Bulgarian registration as well as transmission of goods by pipelines.

Land passenger transport covers the passengers' carriages by road and rail transport from vehicles with Bulgarian registration.

Water transport covers the passengers' and freight carriages and transport performance by maritime and IWW vessels with Bulgarian registration.

Urban electrical transport includes passengers carried and transport performance of trolleybus and electric bus transport in the country, tramway transport and metro in Sofia.

Goods carried (tons) - measures the total volume of goods carried **for hire or reward** between two places (place of loading and place of unloading).

Transport performance of freight transport (tonne-kilometres) - corresponds to the transportation of one ton over one kilometre.

Passengers carried (in numbers) - measures the total number of passengers **with paid fares** carried by the corresponding type of transport between two places (place of embarkation and place of disembarkation).

Transport performance of passenger transport (passenger-kilometres) - corresponds to the transportation of one passenger over one kilometre.

Annex

Table 1

Main indicators of the freight transport activity,
second quarter of 2022 and 2023

Freight transport	II-nd quarter 2022	II-nd quarter 2023	Index of change compared to the second quarter of 2022
Land transport - transported goods			
Total - thousand tons	28776.1	31770.9	110.4
National	19295.8	20881.7	108.2
International	9480.3	10889.2	114.9
Land transport - transport performance			
Total - million tkm	10107.1	8882.5	87.9
National	2420.1	2388.4	98.7
International	7687.0	6494.1	84.5
Water transport - transported goods			
Total - thousand tons	1068.6	1232.9	115.4
National	-	-	-
International	1068.6	1232.9	115.4
Water transport - transport performance			
Total - million tkm	234.7	177.0	75.4
National	-	-	-
International	234.7	177.0	75.4

‘-’ - no case registered.

Table 2

Main indicators of the passenger transport activity,
second quarter of 2022 and 2023

Passenger transport	II-nd quarter 2022	II-nd quarter 2023	Index of change compared to the second quarter of 2022
Land transport - transported passengers			
Total - thousands	88463.0	87061.0	98.4
National	87398.5	85957.8	98.4
International	1064.5	1103.2	103.6
Land transport - transport performance			
Total - million pkm	1993.4	2113.7	106.0
National	1671.8	1741.2	104.2
International	321.6	372.5	115.8
Water transport - transported passengers			
Total - thousands	58.0	67.0	115.6
National	0.4	2.5	625.0
International	57.6	64.5	112.0
Water transport - transport performance			
Total - million pkm	2.3	2.4	104.1
National	0.0	0.1	714.30
International	2.3	2.3	100.3
Urban electrical transport - transported passengers			
Total - thousands	61045.0	64708.0	106.0
Urban electrical transport - transport performance			
Total - million pkm	319.4	347.1	108.7

‘-’ - no case registered.