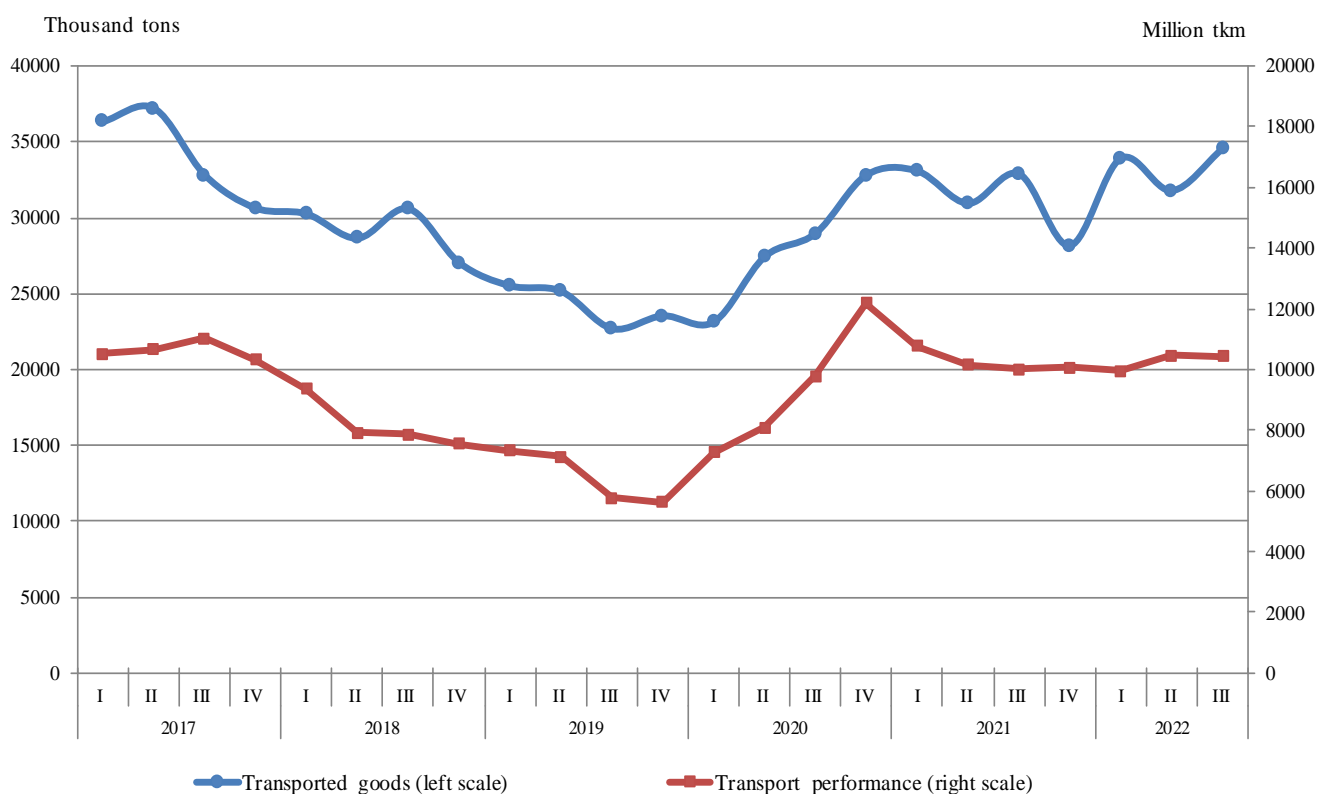


GOODS AND PASSENGERS CARRIED AND TRANSPORT PERFORMANCE BY MODE OF TRANSPORT IN THE THIRD QUARTER OF 2022 (PRELIMINARY DATA)

Quarterly changes

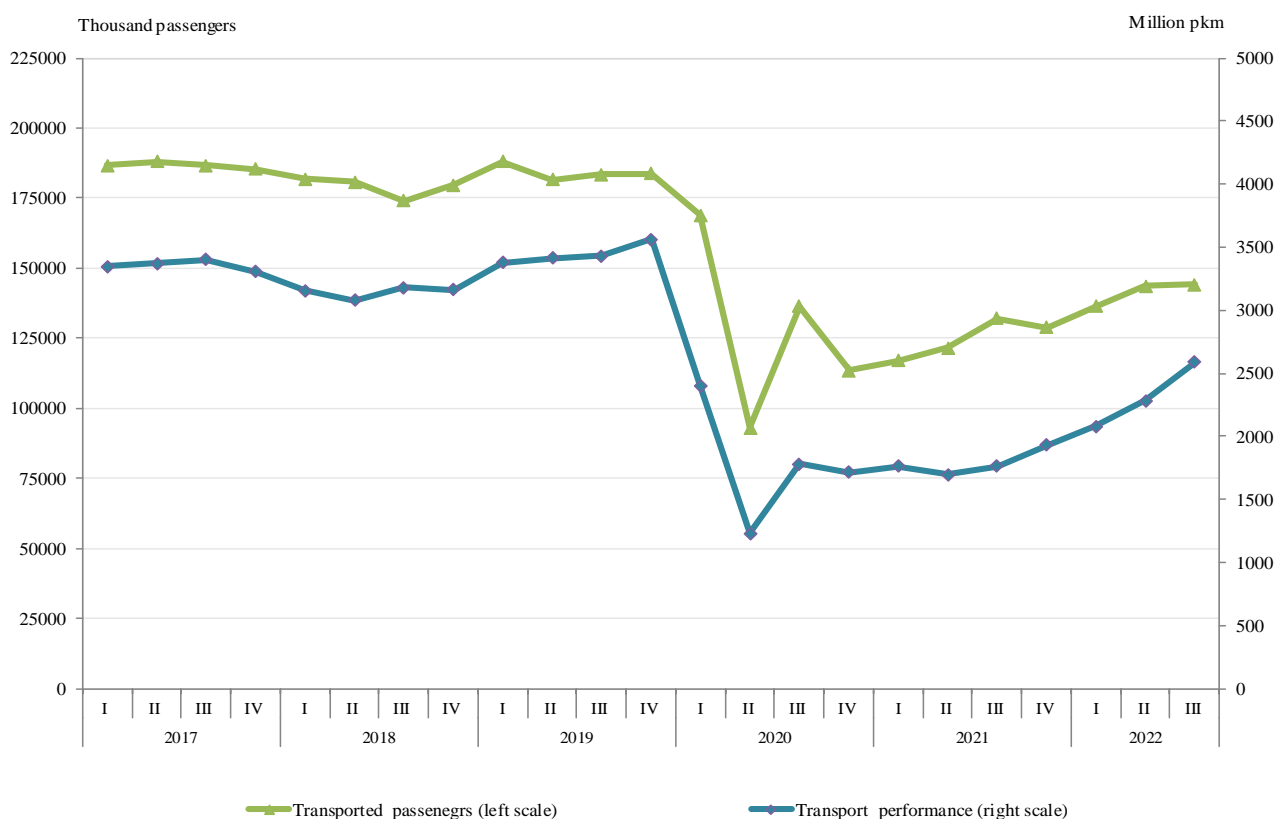
In the third quarter of 2022 the transported goods by the **freight transport** increased by 8.7%, while the transport performance fell by 0.1% compared to the previous quarter (Figure 1). The data are preliminary and seasonally adjusted.

**Figure 1. Goods carried and transport performance by freight transport
(Seasonally adjusted data)**



Both the passengers carried and the transport performance from the **passenger transport** (land, water and urban electrical transport) rose compared to the second quarter of 2022 - by 0.4% and 13.4%, respectively (Figure 2).

Figure 2. Transported passengers and transport performance by passenger transport (Seasonally adjusted data)



Annual changes

The goods carried and the transport performance by the freight land and water transport increased by 7.2% and 4.6% during the third quarter of 2022 in comparison with the same quarter of 2021.

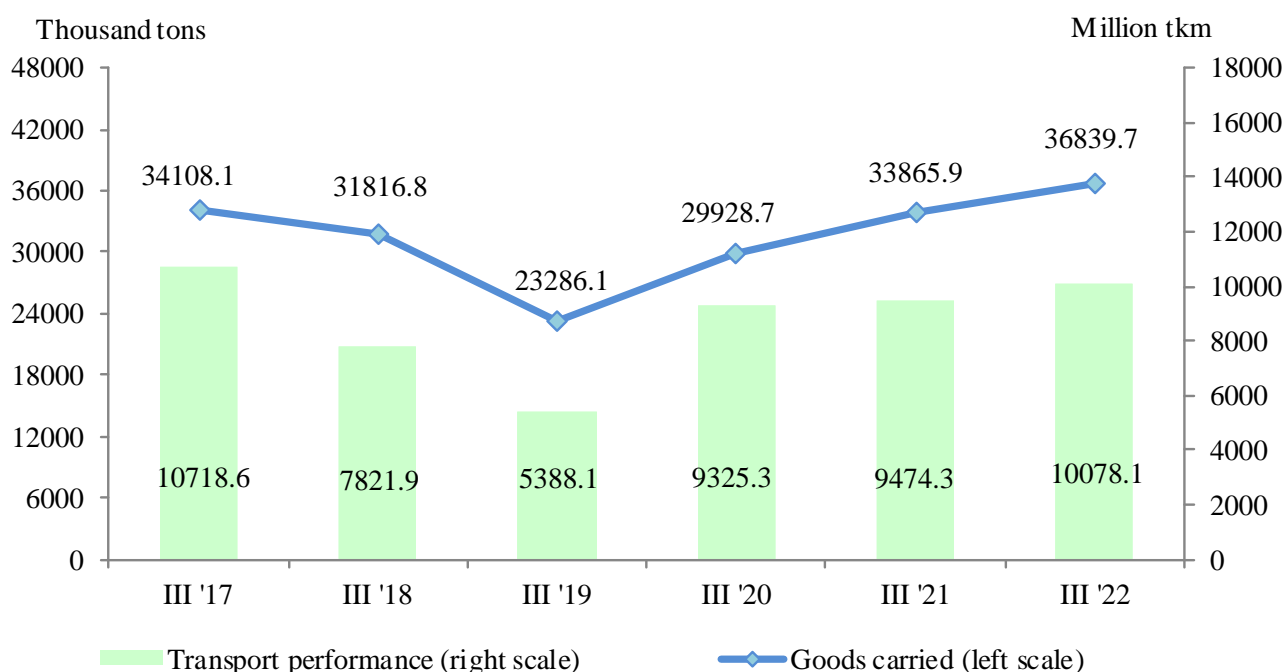
By 11.9% rose the number of transported passengers by the passenger transport (land, water and urban electrical transport) compared to the corresponding quarter of the previous year. The transport performance also increased by 43.2% compared to the third quarter of 2021.

Freight land transport

In the third quarter of 2022 the **transported goods** by the land transport were 36 839.7 thousand tons, or by 8.8% more than the same quarter of 2021 (Figure 3). The national carriages increased by 3.7% and the international transport - by 21.0%.

The **transport performance** rose by 6.4% and reached 10 078.1 million tkm.

Figure 3. Transported goods and transport performance by land transport by quarters

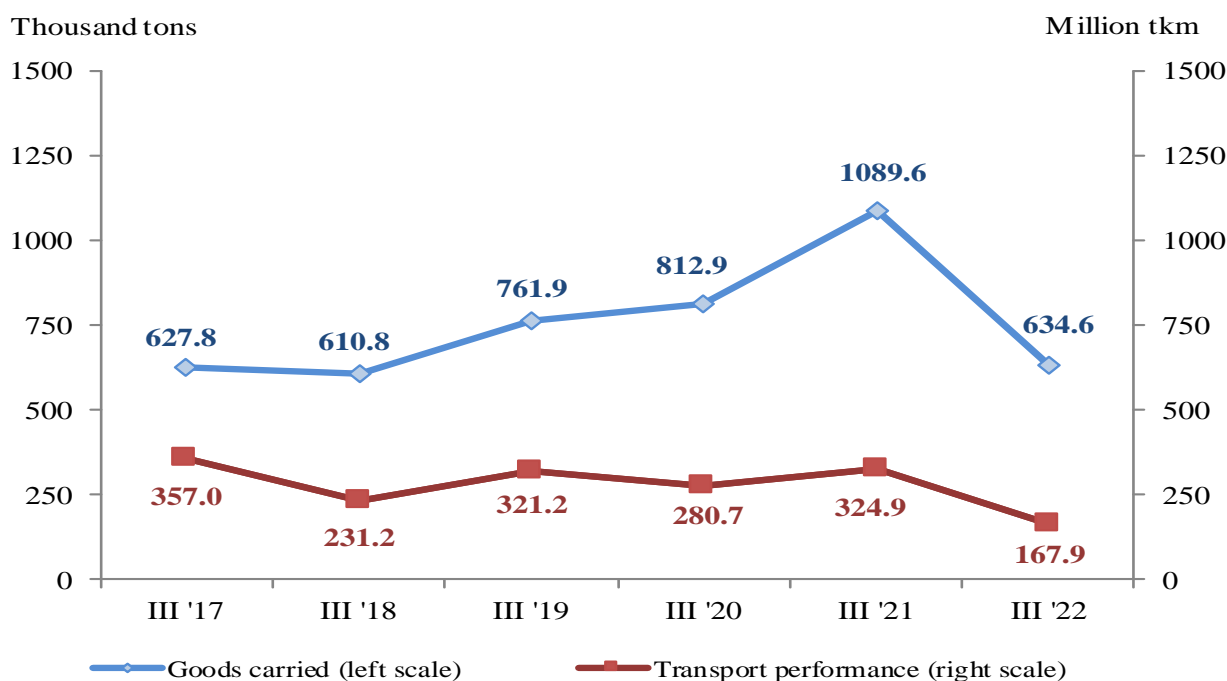


Freight water transport

The **transported goods** by the sea and inland waterway transport were by 41.8% less in comparison with the same quarter of 2021, due to the less transported goods by the inland waterway transport (Figure 4).

The **transport performance**, measured in tonne-kilometres, also declined and reached 167.9 million tkm, mainly due to the international carriages of the inland waterway transport that fell by 65.2%.

Figure 4. Transported goods and transport performance by water transport by quarters

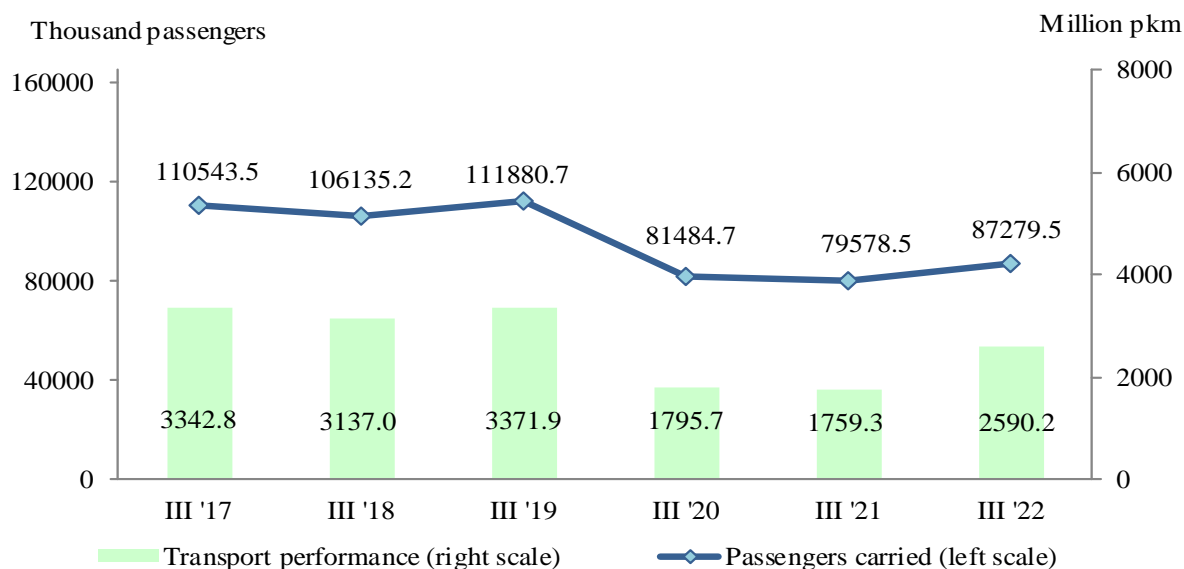


Passengers land transport

The number of the **transported passengers** by the land transport in the third quarter of 2022 was 87 279.5 thousand, or by 9.7% more than the corresponding period of the previous year (Figure 5). The increase by the bus transport was 7.5% and by the railway transport – 43.3%.

The **transport performance** was 2 590.2 million passenger-kilometres, which represented a growth by 47.2% compared to the third quarter of 2021.

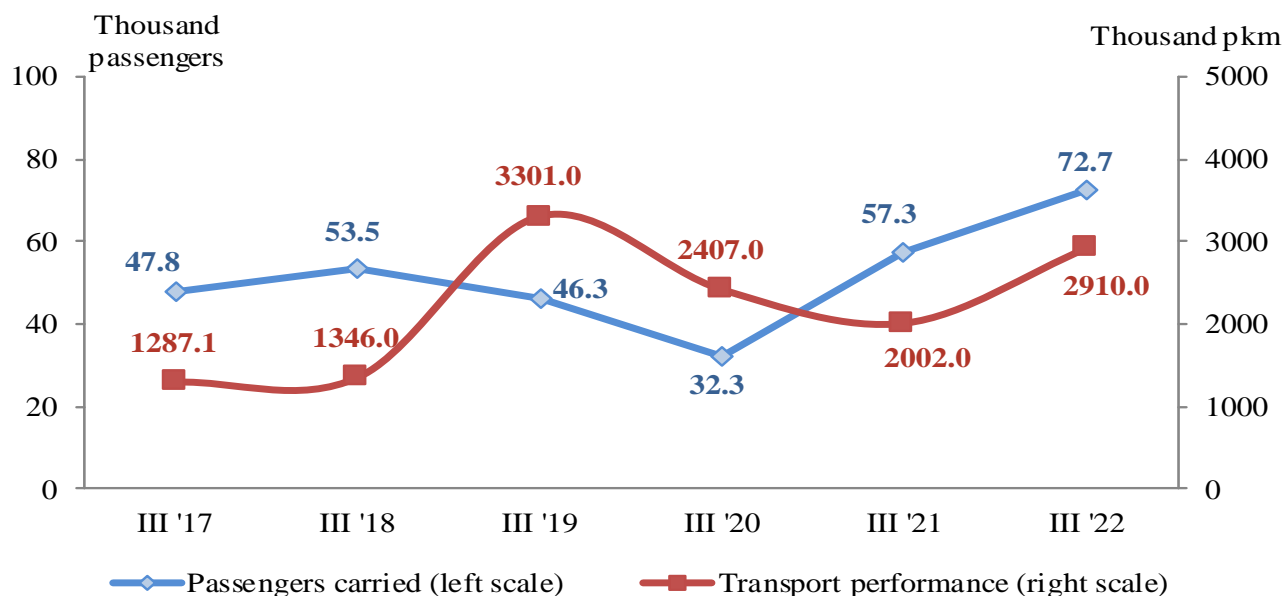
Figure 5. Transported passengers and transport performance by land transport by quarters



Passengers water transport

In the third quarter of 2022, there was an increase of the **transported passengers** by water transport (by 15.4 thousand passengers) as well in the **transport performance** by 907.2 thousand pkm (Figure 6).

Figure 6. Transported passengers and transport performance by water transport by quarters

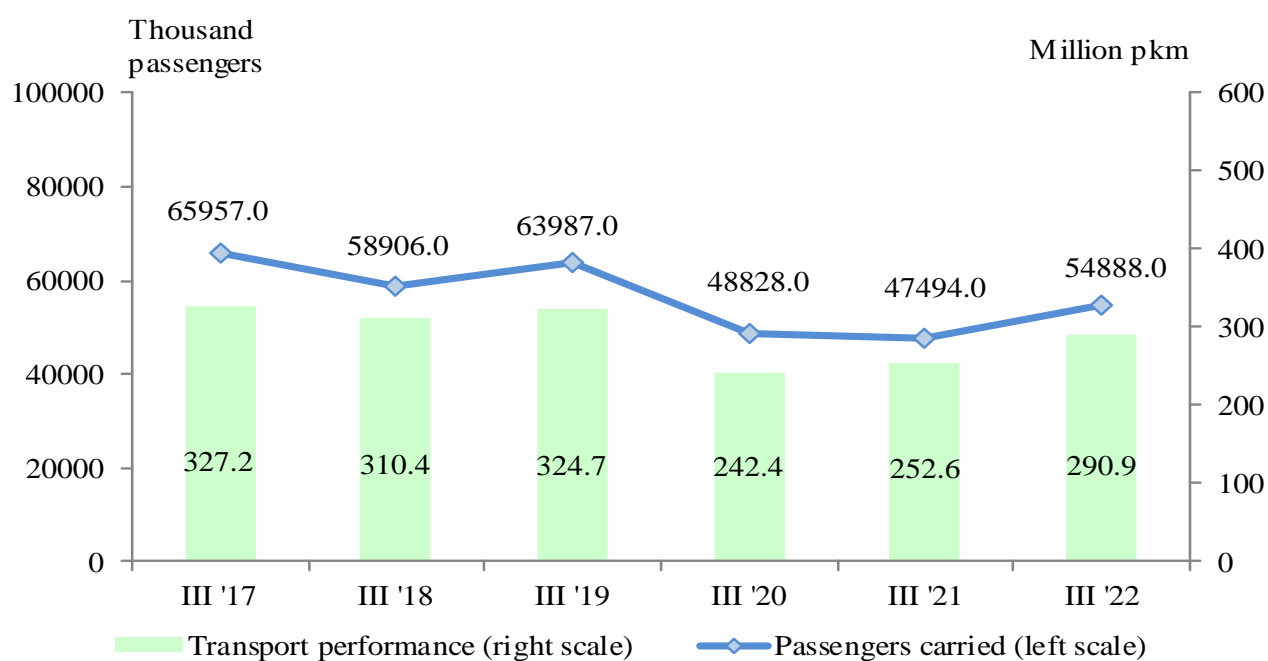


Urban electrical transport

During the period July – September of 2022 the enterprises performing urban electrical transport transported **54 888.0 thousand passengers**, or by 15.6% more than the same period of 2021 (Figure 7). Only the trolleybus transport registered a 0.9% drop.

The **transport performance** measured in passenger-kilometres also increased by 15.2% and reached 290.9 million pkm.

Figure 7. Transported passengers and transport performance by urban electrical transport by quarters





Methodological notes

Land freight transport covers the freight carriages by road and rail transport from vehicles with Bulgarian registration as well as transmission of goods by pipelines.

Land passenger transport covers the passengers' carriages by road and rail transport from vehicles with Bulgarian registration.

Water transport covers the passengers' and freight carriages and transport performance by maritime and IWW vessels with Bulgarian registration.

Urban electrical transport includes passengers carried and transport performance of trolleybus and electric bus transport in the country, tramway transport and metro in Sofia.

Goods carried (tons) - measures the total volume of goods carried **for hire or reward** between two places (place of loading and place of unloading).

Transport performance of freight transport (tonne-kilometres) - corresponds to the transportation of one ton over one kilometre.

Passengers carried (in numbers) - measures the total number of passengers **with paid fares** carried by the corresponding type of transport between two places (place of embarkation and place of disembarkation).

Transport performance of passenger transport (passenger-kilometres) - corresponds to the transportation of one passenger over one kilometre.

Annex

Table 1

**Main indicators of the freight transport activity,
third quarter of 2021 and 2022**

Freight transport	III-rd quarter 2021	III-rd quarter 2022	Index of change compared to the third quarter of 2021
Land transport - transported goods			
Total - thousand tons	33865.9	36839.7	108.8
National	23929.4	24818.9	103.7
International	9936.5	12020.8	121.0
Land transport - transport performance			
Total - million tkm	9474.3	10078.1	106.4
National	2546.1	2717.0	106.7
International	6928.2	7361.1	106.2
Water transport - transported goods			
Total - thousand tons	1089.6	634.6	58.2
National	-	-	-
International	1089.6	634.6	58.2
Water transport - transport performance			
Total - million tkm	324.9	167.9	51.7
National	-	-	-
International	324.9	167.9	51.7

‘-’ - no case registered.

Table 2

**Main indicators of the passenger transport activity,
third quarter of 2021 and 2022**

Passenger transport	III-rd quarter 2021	III-rd quarter 2022	Index of change compared to the third quarter of 2021
Land transport - transported passengers			
Total - thousands	79578.5	87279.5	109.7
National	79224.3	85881.1	108.4
International	354.2	1398.4	394.8
Land transport - transport performance			
Total - million pkm	1759.3	2590.2	147.2
National	1551.5	1925.7	124.1
International	207.8	664.5	319.8
Water transport - transported passengers			
Total - thousands	57.3	72.7	126.9
National	6.7	29.6	441.8
International	50.6	43.1	85.2
Water transport - transport performance			
Total - million pkm	2.0	2.9	145.4
National	0.1	0.6	630.10
International	1.9	2.3	119.1
Urban electrical transport - transported passengers			
Total - thousands	47494.0	54888.0	115.6
Urban electrical transport - transport performance			
Total - million pkm	252.6	290.9	115.2