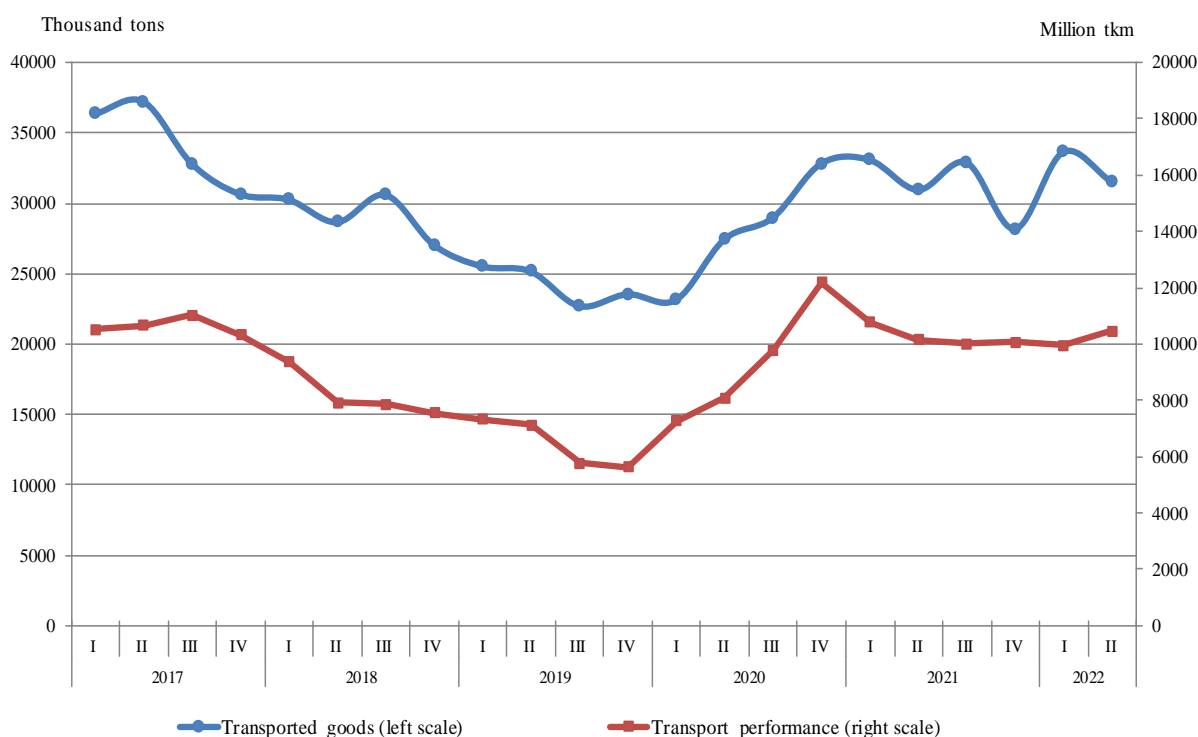


GOODS AND PASSENGERS CARRIED AND TRANSPORT PERFORMANCE BY MODE OF TRANSPORT IN THE SECOND QUARTER OF 2022 (PRELIMINARY DATA)

Quarterly changes

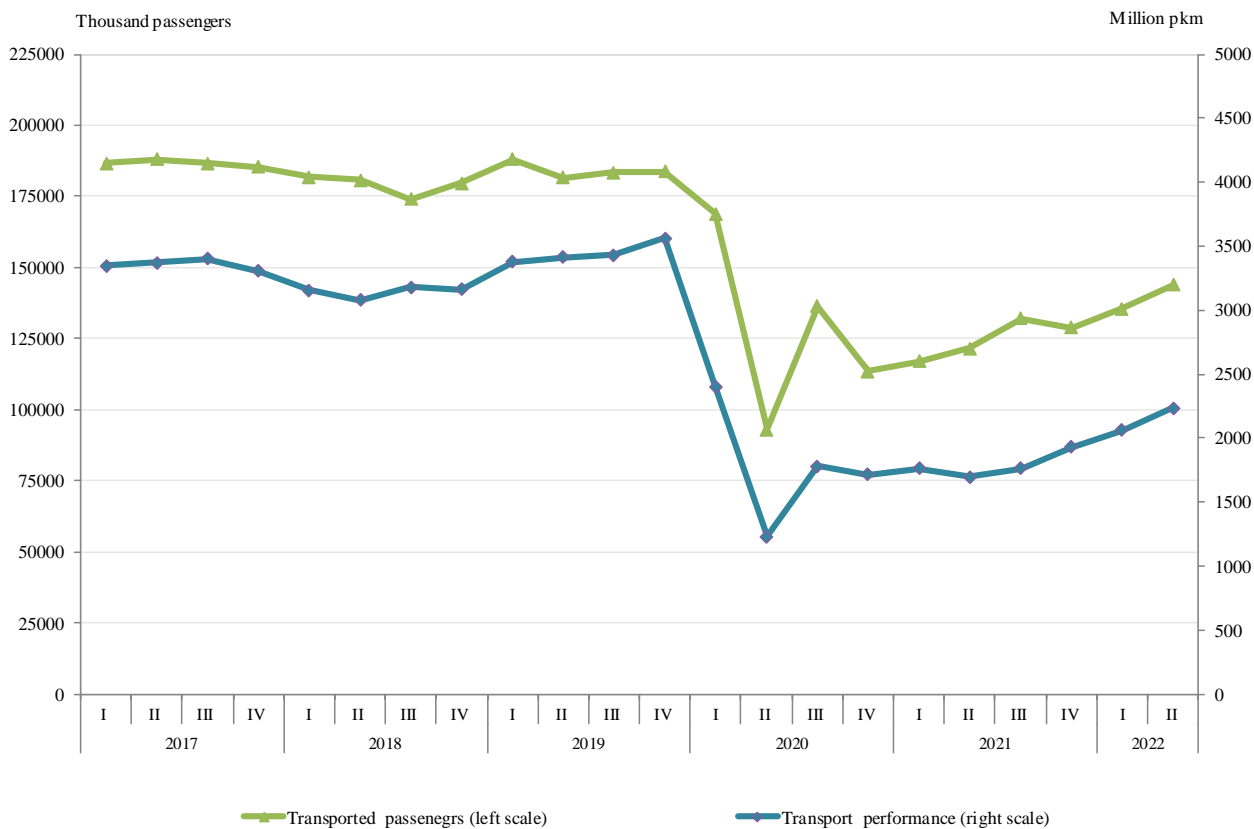
In the second quarter of 2022 the transported goods by the **freight transport** decreased by 6.3%, while the transport performance increased by 5.1% compared to the previous quarter (Figure 1). The data are preliminary and seasonally adjusted.

**Figure 1. Goods carried and transport performance by freight transport
(Seasonally adjusted data)**



Both the passengers carried and the transport performance from the **passenger transport** (land, water and urban electrical transport) rose compared to the first quarter of 2022 - by 6.2% and 8.3%, respectively (Figure 2).

Figure 2. Transported passengers and transport performance by passenger transport (Seasonally adjusted data)



Annual changes

The goods carried and the transport performance by the freight land and water transport increased by 1.7% and 5.6% during the second quarter of 2022 in comparison with the same quarter of 2021. The data are preliminary.

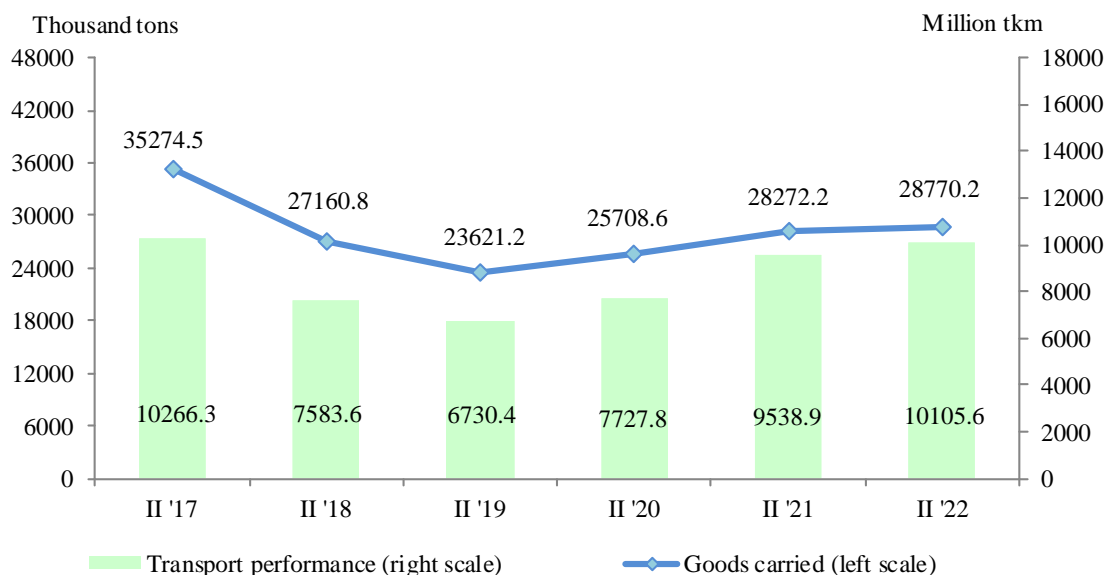
By 17.4% rose the number of transported passengers by the passenger transport (land, water and urban electrical transport) compared to the corresponding quarter of the previous year. The transport performance also increased by 30.5% compared to the second quarter of 2021.

Freight land transport

In the second quarter of 2022 the **transported goods** by the land transport were 28 770.2 thousand tons, or by 1.8% more than the same quarter of 2021 (Figure 3). The national carriages increased by 7.8%, while the international transport fell by 8.7%.

The **transport performance** rose by 5.9% and reached 10 105.6 million tkm.

Figure 3. Transported goods and transport performance by land transport by quarters

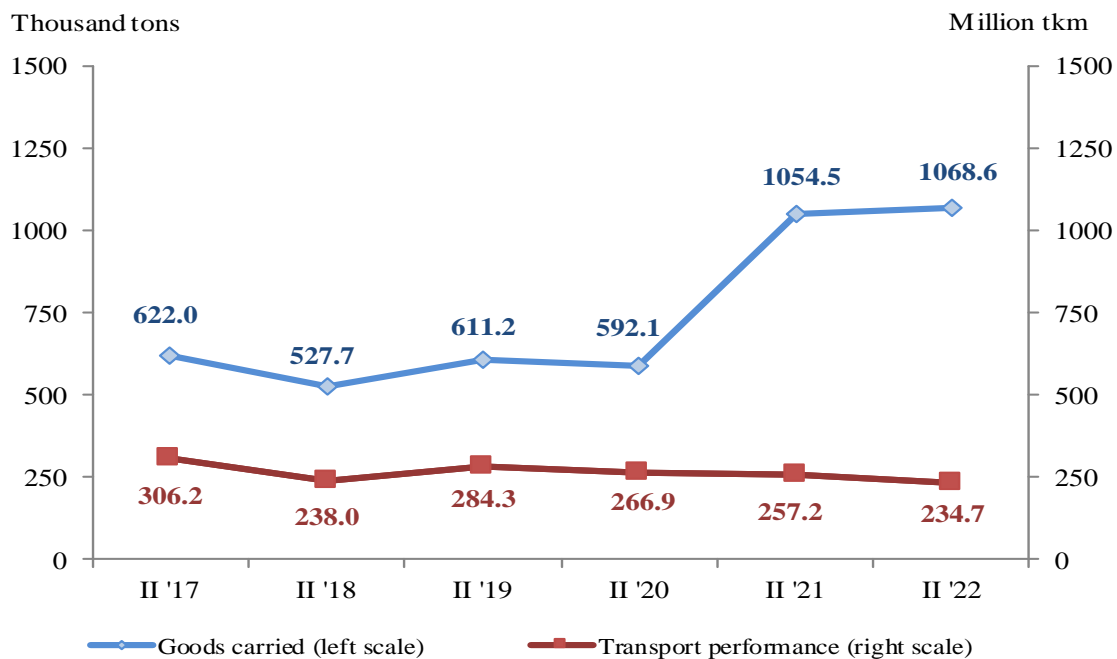


Freight water transport

The **transported goods** by the sea and inland waterway transport went up by 1.3% in comparison with the same quarter of 2021, due to the more transported goods by the maritime transport (Figure 4).

At the same time the **transport performance**, measured in tonne-kilometres, declined by 8.7% and reached 234.7 million tkm, mainly due to the international carriages of the maritime transport that fell by 24.5%.

Figure 4. Transported goods and transport performance by water transport by quarters

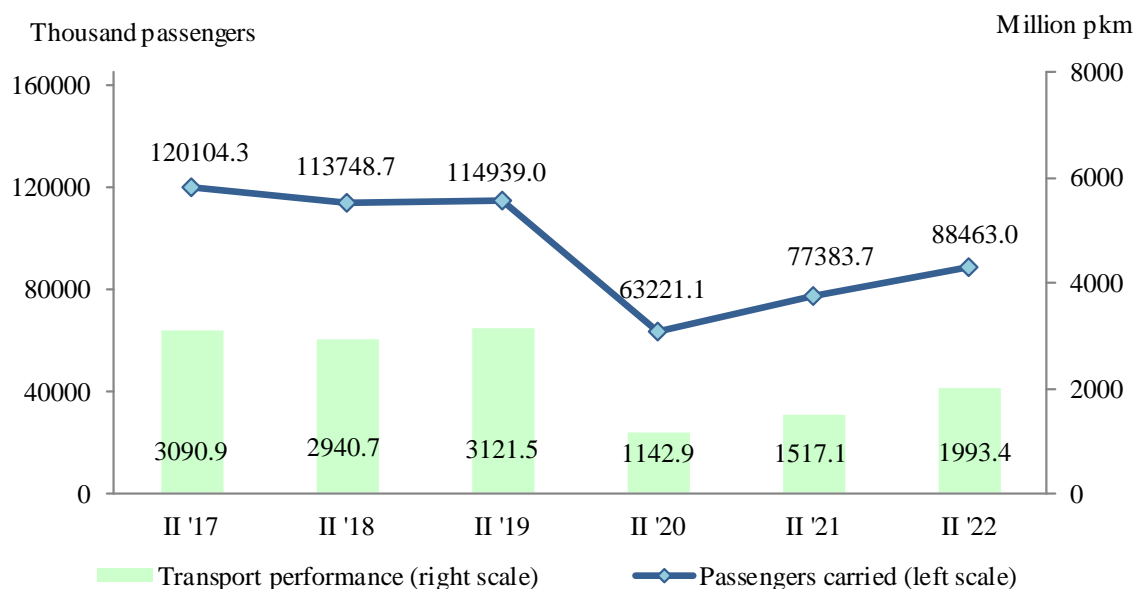


Passengers land transport

The number of the **transported passengers** by the land transport in the second quarter of 2022 was 88 463.0 thousand, or by 14.3% more than the same period of the previous year (Figure 5). The increase by the bus transport was 13.1% and by the railway transport - 34.8%.

The **transport performance** was 1 993.4 million passenger-kilometres, which represented a growth by 31.4% compared to the second quarter of the previous year.

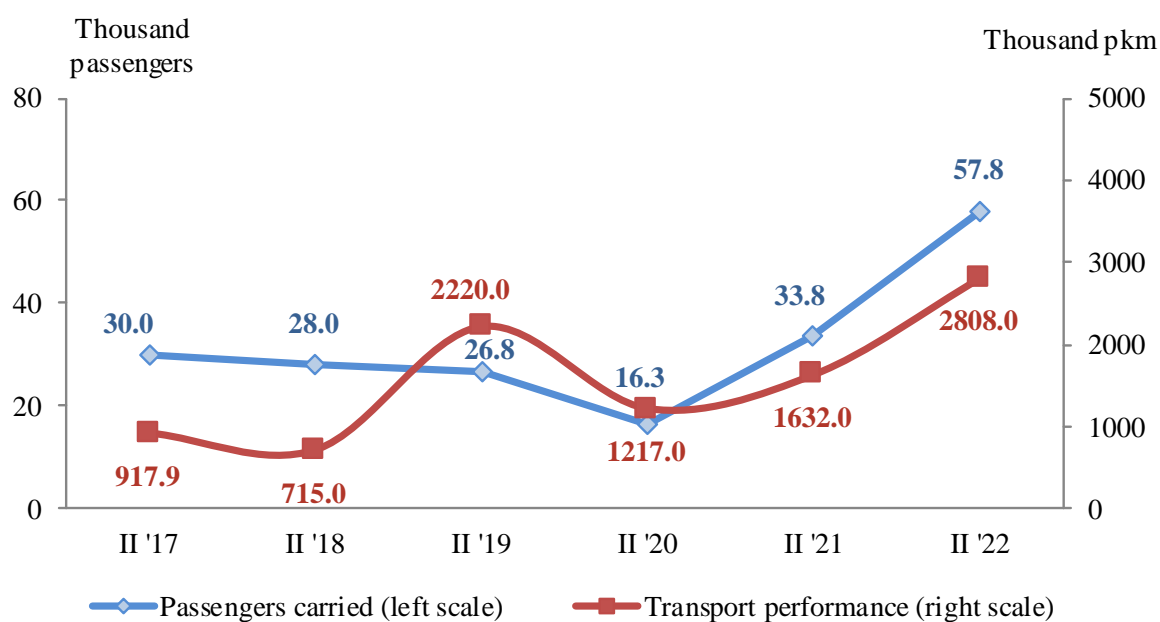
Figure 5. Transported passengers and transport performance by land transport by quarters



Passengers water transport

In the second quarter of 2022, there was an increase of the **transported passengers** by water transport (by 24.0 thousand passengers) as well in the **transport performance** by 117.6 thousand pkm (Figure 6).

Figure 6. Transported passengers and transport performance by water transport by quarters

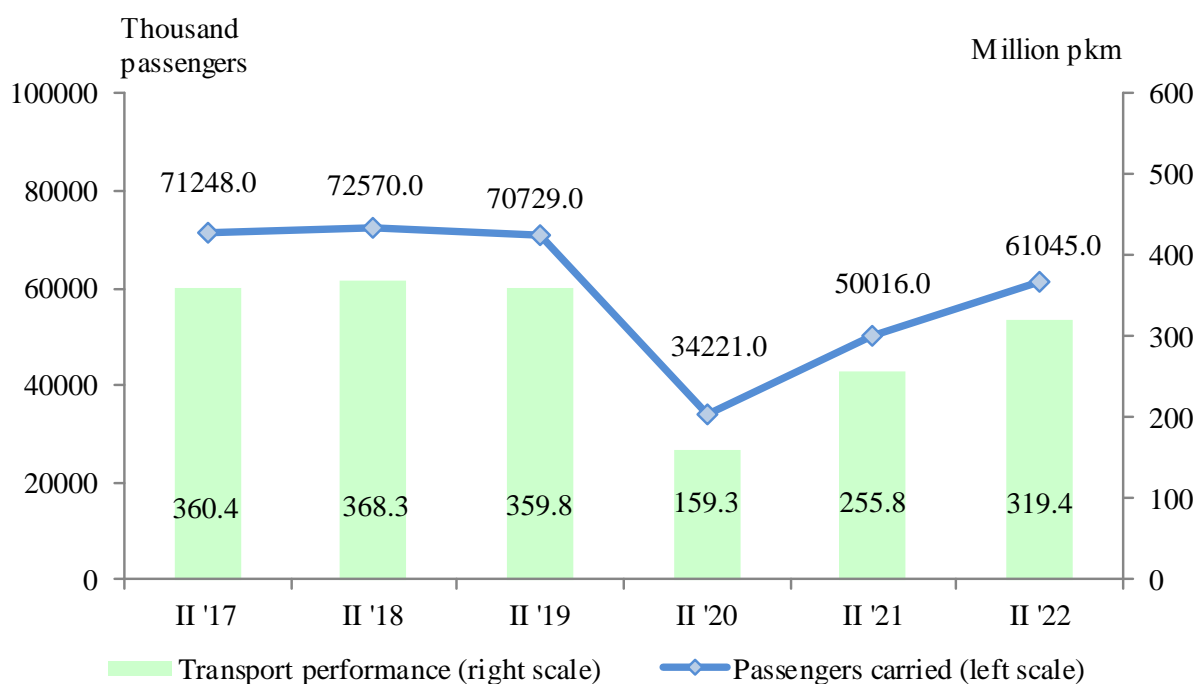


Urban electrical transport

During the period April - June of 2022 the enterprises performing urban electrical transport transported **61 045.0 thousand passengers**, or by 22.1% more than the same period of 2021 (Figure 7). Only the trolleybuss transport registered a 2.0% drop.

The **transport performance** measured in passenger-kilometres also increased by 24.9% and reached 319.4 million pkm in comparison with the corresponding period of 2021.

Figure 7. Transported passengers and transport performance by urban electrical transport by quarters





Methodological notes

Land freight transport covers the freight carriages by road and rail transport from vehicles with Bulgarian registration as well as transmission of goods by pipelines.

Land passenger transport covers the passengers' carriages by road and rail transport from vehicles with Bulgarian registration.

Water transport covers the passengers' and freight carriages and transport performance by maritime and IWW vessels with Bulgarian registration.

Urban electrical transport includes passengers carried and transport performance of trolleybus and electric bus transport in the country, tramway transport and metro in Sofia.

Goods carried (tons) - measures the total volume of goods carried **for hire or reward** between two places (place of loading and place of unloading).

Transport performance of freight transport (tonne-kilometres) - corresponds to the transportation of one ton over one kilometre.

Passengers carried (in numbers) - measures the total number of passengers **with paid fares** carried by the corresponding type of transport between two places (place of embarkation and place of disembarkation).

Transport performance of passenger transport (passenger-kilometres) - corresponds to the transportation of one passenger over one kilometre.

Annex

Table 1

Main indicators of the freight transport activity,
second quarter of 2021 and 2022

Freight transport	II-nd quarter 2021	II-nd quarter 2022	Index of change compared to the second quarter of 2021
Land transport - transported goods			
Total - thousand tons	28272.2	28770.2	101.8
National	17890.2	19292.0	107.8
International	10382.0	9478.2	91.3
Land transport - transport performance			
Total - million tkm	9538.9	10105.6	105.9
National	2128.7	2419.2	113.6
International	7410.2	7686.4	103.7
Water transport - transported goods			
Total - thousand tons	1054.5	1068.6	101.3
National	-	-	-
International	1054.5	1068.6	101.3
Water transport - transport performance			
Total - million tkm	257.2	234.7	91.3
National	-	-	-
International	257.2	234.7	91.3

‘-’ - no case registered.

Table 2

**Main indicators of the passenger transport activity,
second quarter of 2021 and 2022**

Passenger transport	II-nd quarter 2021	II-nd quarter 2022	Index of change compared to the second quarter of 2021
Land transport - transported passengers			
Total - thousands	77383.7	88463.0	114.3
National	77251.4	87398.5	113.1
International	132.3	1064.5	804.6
Land transport - transport performance			
Total - million pkm	1517.1	1993.4	131.4
National	1387.4	1671.8	120.5
International	129.7	321.6	248.0
Water transport - transported passengers			
Total - thousands	33.8	57.8	171.0
National	-	0.4	-
International	33.8	57.4	169.8
Water transport - transport performance			
Total - million pkm	1.6	2.8	169.9
National	-	-	-
International	1.6	2.8	169.1
Urban electrical transport - transported passengers			
Total - thousands	50016.0	61045.0	122.1
Urban electrical transport - transport performance			
Total - million pkm	255.8	319.4	124.9

‘-’ - no case registered.