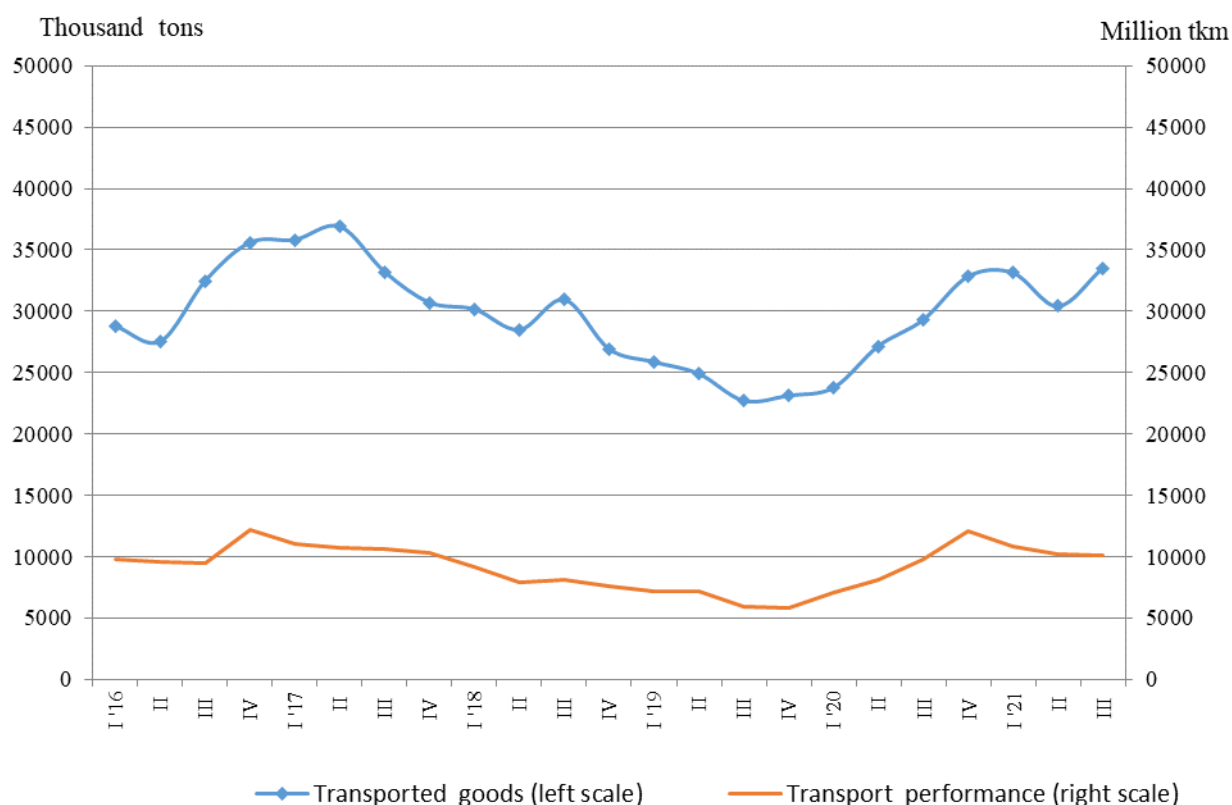


**GOODS AND PASSENGERS CARRIED AND TRANSPORT PERFORMANCE BY
 MODE OF TRANSPORT IN THE THIRD QUARTER OF 2021
 (PRELIMINARY DATA)**

Quarterly changes

According to preliminary seasonally adjusted data in the third quarter of 2021 compared to the previous quarter the transported goods by the **freight transport** rose by 10.2%, while the transport performance decreased by 1.0% (Figure 1).

**Figure 1. Goods carried and transport performance by freight transport
 (Seasonally adjusted data)**



The passengers carried and the transport performance from **passenger transport** (land, water and urban electrical transport) increased by 3.5% and 1.3% compared to the second quarter of 2021 (Figure 2).

Figure 2. Transported passengers and transport performance by passenger transport (Seasonally adjusted data)



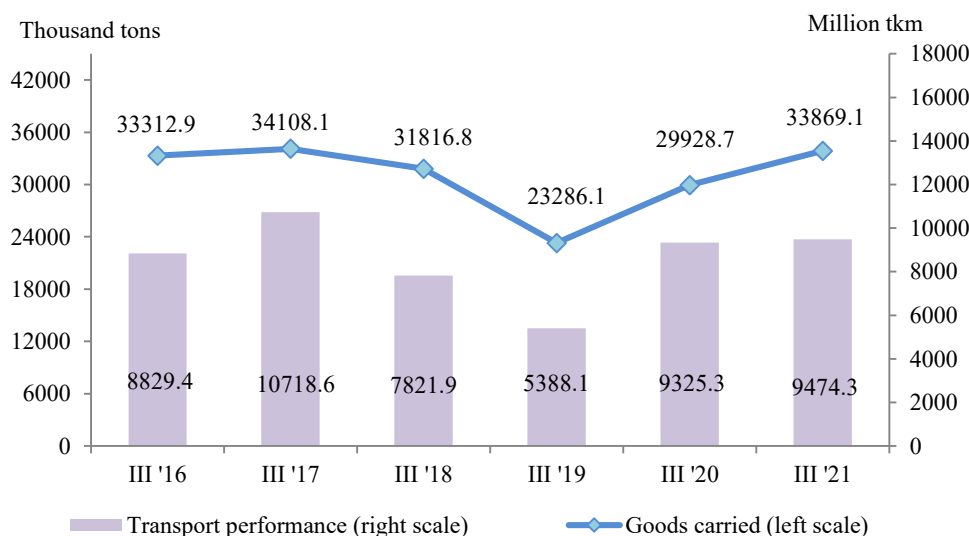
Annual changes

According to preliminary data during the third quarter of 2021 there was an increase, both in the goods carried (by 13.7%) and in the transport performance (by 2.0%) by the freight land and water transport in comparison with the same period of 2020. The transported passengers and the transport performance of the passenger transport decreased by 2.5% and 1.3% compared to the same quarter of the previous year.

Freight land transport

In the third quarter of 2021 the **transported goods** by the land transport were 33 869.1 thousand tons, or by 3 940.4 thousand tons more than the same quarter of 2020 (Figure 3) which was mainly due to freight road and pipeline transport. The **transport performance** also increased by 1.6% and reached 9 474.3 million tkm.

Figure 3. Transported goods and transport performance by land transport by quarters

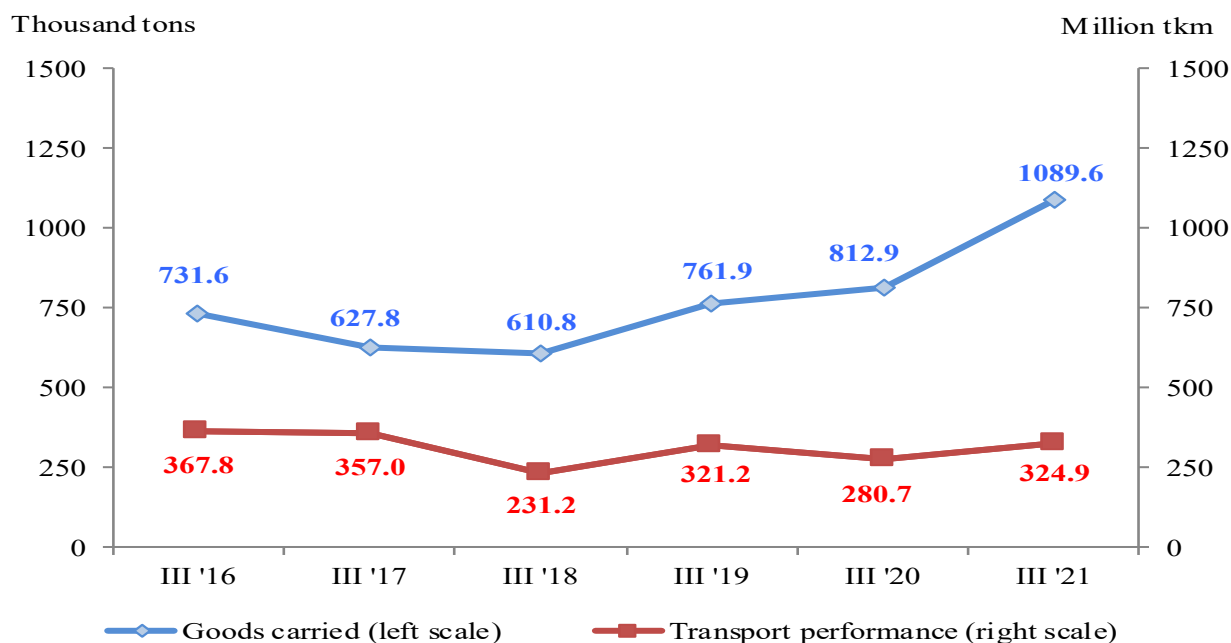


Freight water transport

The **transported goods** by sea and inland waterway transport increased by 276.7 thousand tons in comparison with the same quarter of 2020. An increase was observed both in inland waterway and in maritime transport by 34.2% and 31.3%, respectively. (Figure 4).

The **transport performance**, measured in tonne-kilometres, also rose and reached 324.9 million tkm due to the bigger average distance travelled on which the goods by the maritime transport were transported.

Figure 4. Transported goods and transport performance by water transport by quarters

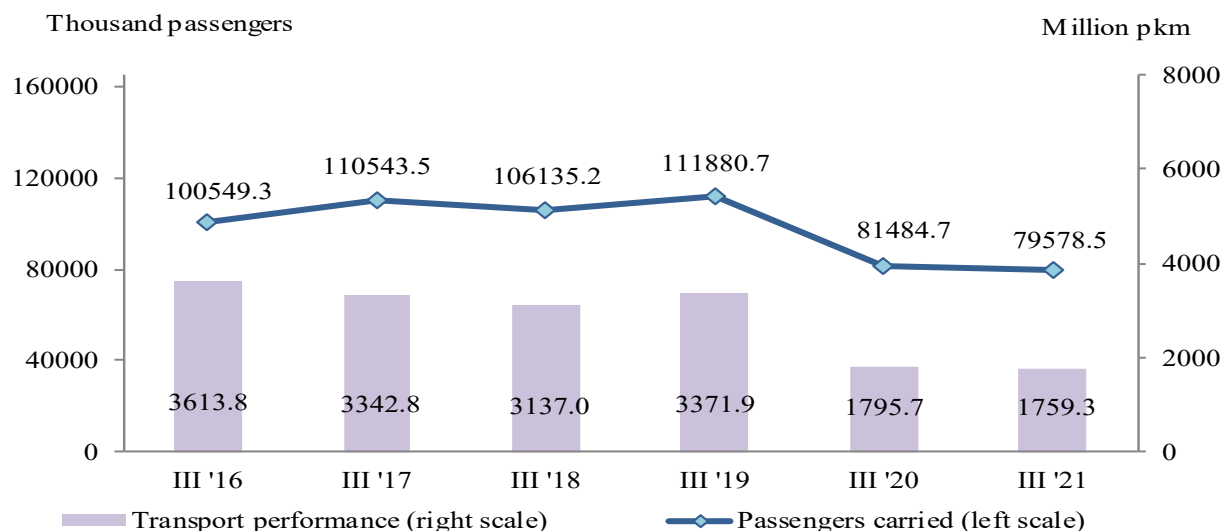


Passengers land transport

The number of the **transported passengers** by the land transport in the third quarter of 2021 was 79 578.5 thousand, or by 2.3% less than the same period of the previous year (Figure 5), which was due to the less transported passengers from the bus transport.

The **transport performance** also declined by 2.0% and reached 1 759.3 million passenger-kilometres (Figure 5).

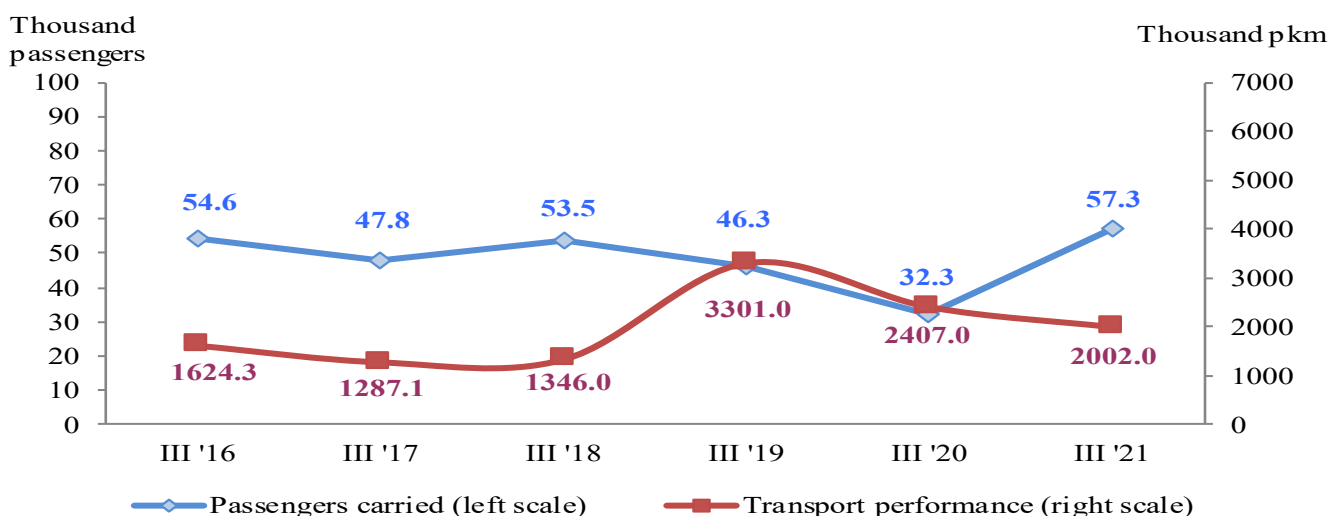
Figure 5. Transported passengers and transport performance by land transport by quarters



Passengers water transport

In the third quarter of 2021 the **transported passengers** by the water transport increased by 25.0 thousand passengers. At the same time the **transport performance** declined by 405.0 thousand pkm compared to the same quarter of the previous year due to the less distance at which the passengers by the maritime transport were transported (Figure 6).

Figure 6. Transported passengers and transport performance by water transport by quarters

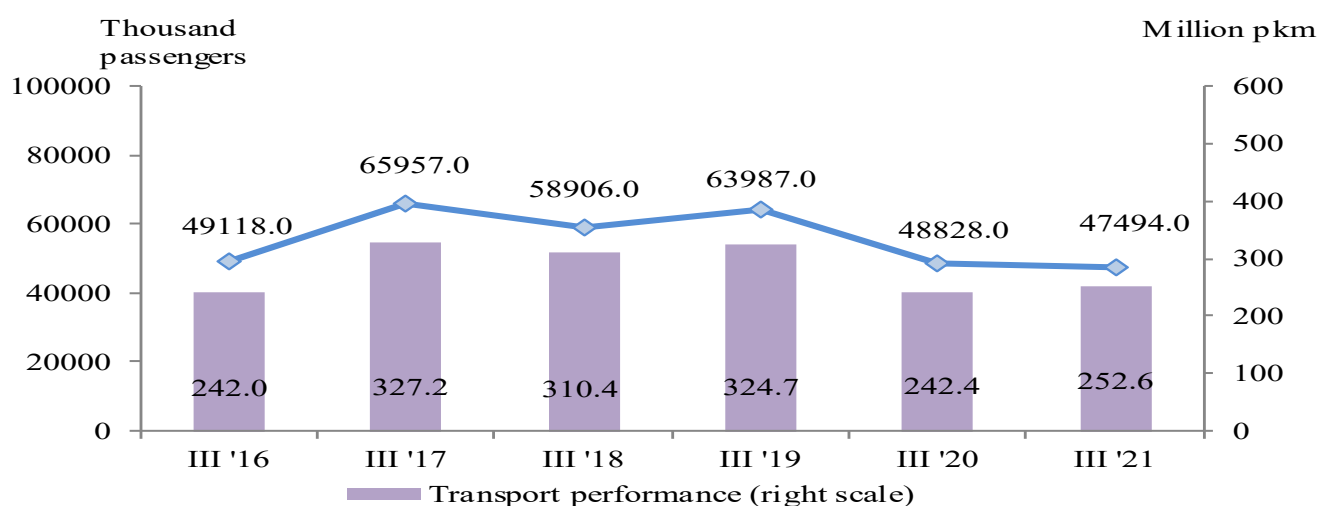


Urban electrical transport

During the period July - September of 2021 the enterprises performing urban electrical transport (tram, trolleybus and metro) transported **47 494.0 thousand passengers**, or by 2.7% less than the same period of 2020 (Figure 7). An increase was observed only in metro - by 15.8%.

The **transport performance** measured in passenger-kilometres increased and reached 252.6 thousand pkm.

Figure 7. Transported passengers and transport performance by urban electrical transport by quarters



Methodological notes

Land freight transport covers the freight carriages by road and rail transport from vehicles with Bulgarian registration as well as transmission of goods by pipelines.

Land passenger transport covers the passengers' carriages by road and rail transport from vehicles with Bulgarian registration.

Water transport covers the passengers' and freight carriages and transport performance by maritime and IWW vessels with Bulgarian registration.

Urban electrical transport includes passengers carried and transport performance of trolleybus transport in the country, electric bus and tramway transport, and metro in Sofia.

Goods carried (tons) - measures the total volume of goods carried **for hire or reward** between two places (place of loading and place of unloading).

Transport performance of freight transport (tonne-kilometres) - corresponds to the transportation of one ton over one kilometre.

Passengers carried (in numbers) - measures the total number of passengers **with paid fares** carried by the corresponding type of transport between two places (place of embarkation and place of disembarkation).

Transport performance of passenger transport (passenger-kilometres) - corresponds to the transportation of one passenger over one kilometre.

Annex

Table 1

**Main indicators of the freight transport activity,
third quarter of 2020 and 2021¹**

| Freight transport | III quarter 2020 | III quarter 2021 | Index of change compared to the third quarter of 2020 |
|---|---------------------|---------------------|--|
| Land transport - transported goods | | | |
| Total - thousand tons | 29928.7 | 33869.1 | 113.2 |
| National | 20558.4 | 23929.4 | 116.4 |
| International | 9370.3 | 9939.7 | 106.1 |
| Land transport - transport performance | | | |
| Total - million tkm | 9325.3 | 9474.3 | 101.6 |
| National | 2565.3 | 2546.1 | 99.3 |
| International | 6760.0 | 6928.2 | 102.5 |
| Water transport - transported goods | | | |
| Total - thousand tons | 812.9 | 1089.6 | 134.0 |
| National | - | - | - |
| International | 812.9 | 1089.6 | 134.0 |
| Water transport - transport performance | | | |
| Total - million tkm | 280.7 | 324.9 | 115.7 |
| National | - | - | - |
| International | 280.7 | 324.9 | 115.7 |

¹ '-' - no case registered.

Table 2

**Main indicators of the passenger transport activity,
third quarter of 2020 and 2021**

| Passenger transport | III quarter 2020 | III quarter 2021 | Index of change compared to the third quarter of 2020 |
|---|---------------------|---------------------|--|
| Land transport - transported passengers | | | |
| Total - thousands | 81484.7 | 79578.5 | 97.7 |
| National | 81302.1 | 79224.3 | 97.4 |
| International | 182.6 | 354.2 | 194.0 |
| Land transport - transport performance | | | |
| Total - million pkm | 1795.7 | 1759.3 | 98.0 |
| National | 1651.1 | 1551.5 | 94.0 |
| International | 144.6 | 207.8 | 143.7 |
| Water transport - transported passengers | | | |
| Total - thousands | 32.3 | 57.3 | 177.4 |
| National | 5.4 | 6.7 | 124.1 |
| International | 26.9 | 50.6 | 188.1 |
| Water transport - transport performance | | | |
| Total - million pkm | 2.4 | 2.0 | 83.2 |
| National | 0.1 | 0.1 | 125.60 |
| International | 2.3 | 1.9 | 81.7 |
| Urban electrical transport - transported passengers | | | |
| Total - thousands | 48828.0 | 47494.0 | 97.3 |
| Urban electrical transport - transport performance | | | |
| Total - million pkm | 242.4 | 252.6 | 104.2 |