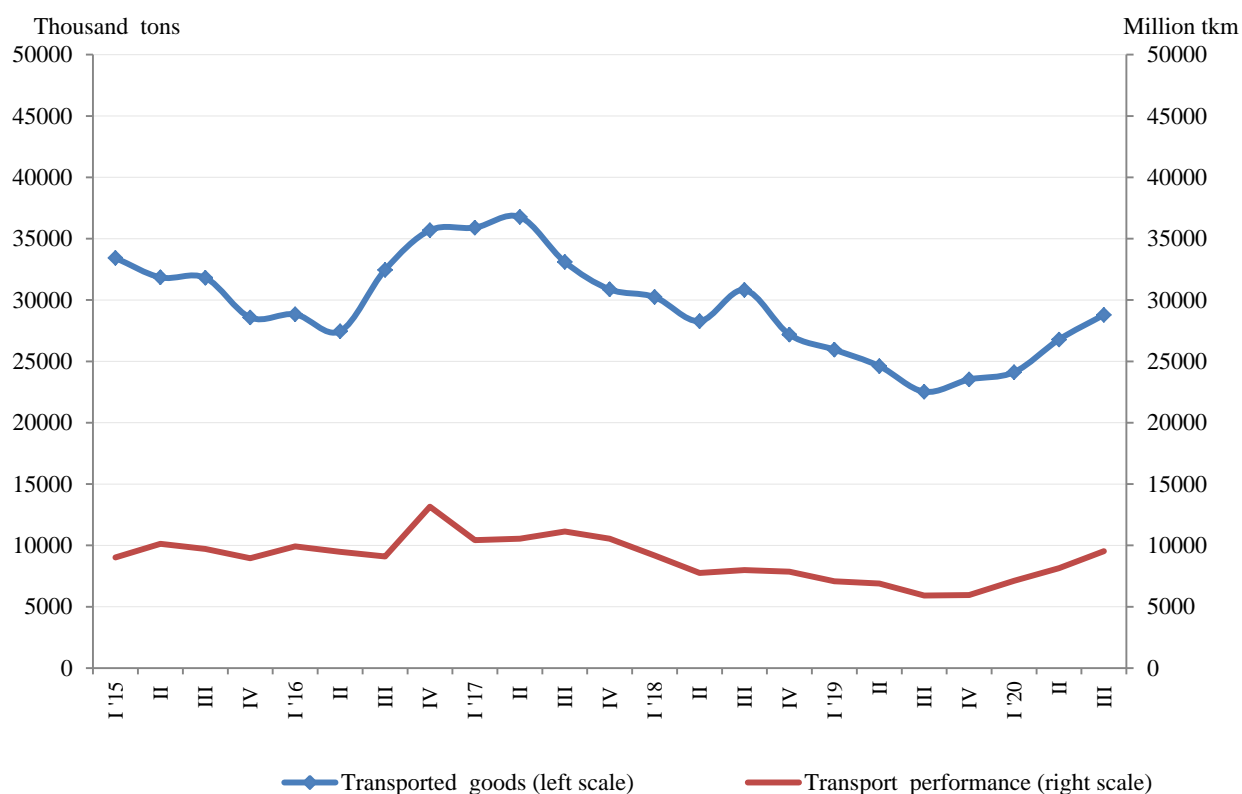


GOODS AND PASSENGERS CARRIED AND TRANSPORT PERFORMANCE BY MODE OF TRANSPORT IN THE THIRD QUARTER OF 2020 (PRELIMINARY DATA)

Quarterly changes

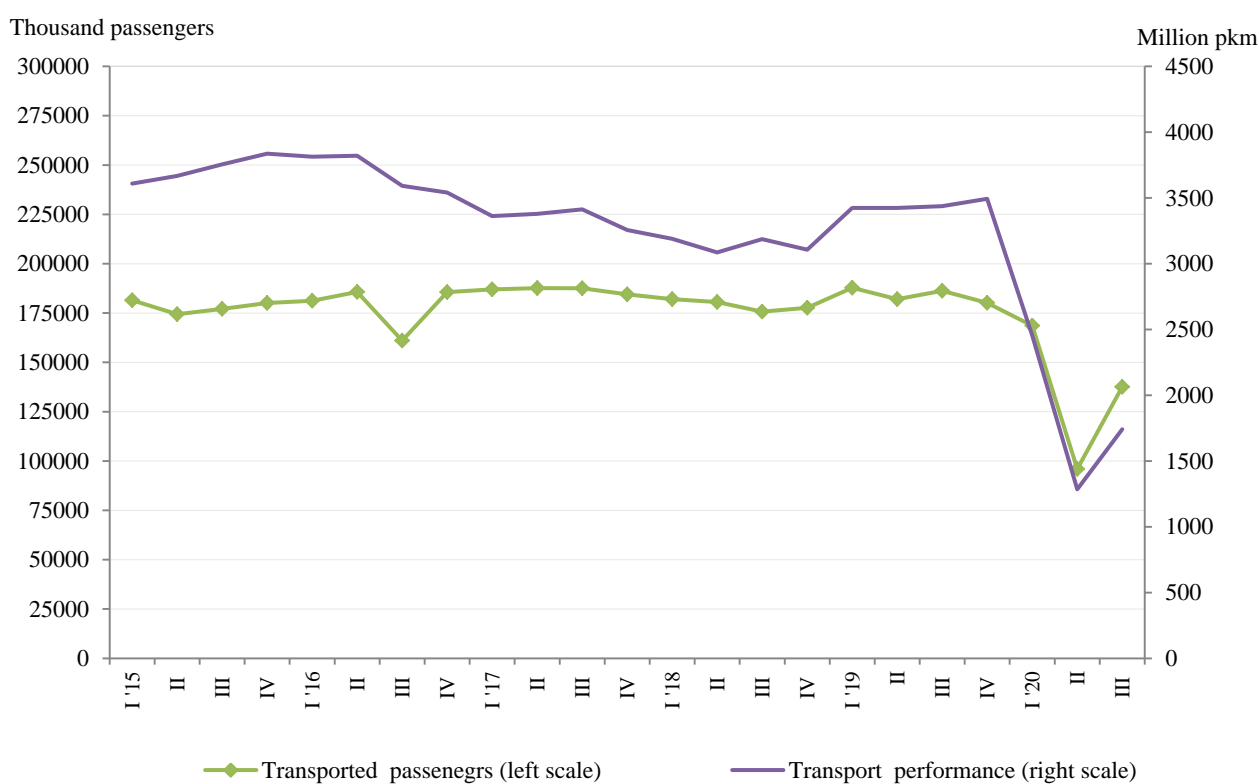
According to preliminary seasonally adjusted data in the third quarter of 2020 compared to the previous quarter, both the transported goods and the transport performance by the **freight transport** rose respectively by 7.5% and by 17% (Figure 1).

**Figure 1. Goods carried and transport performance by freight transport
 (Seasonally adjusted data)**



The passengers carried and the transport performance from **passenger transport** (land, water and urban electrical transport) increased by 43.4% and by 35.5% compared to the second quarter of 2020 (Figure 2).

Figure 2. Transported passengers and transport performance by passenger transport (Seasonally adjusted data)



Annual changes

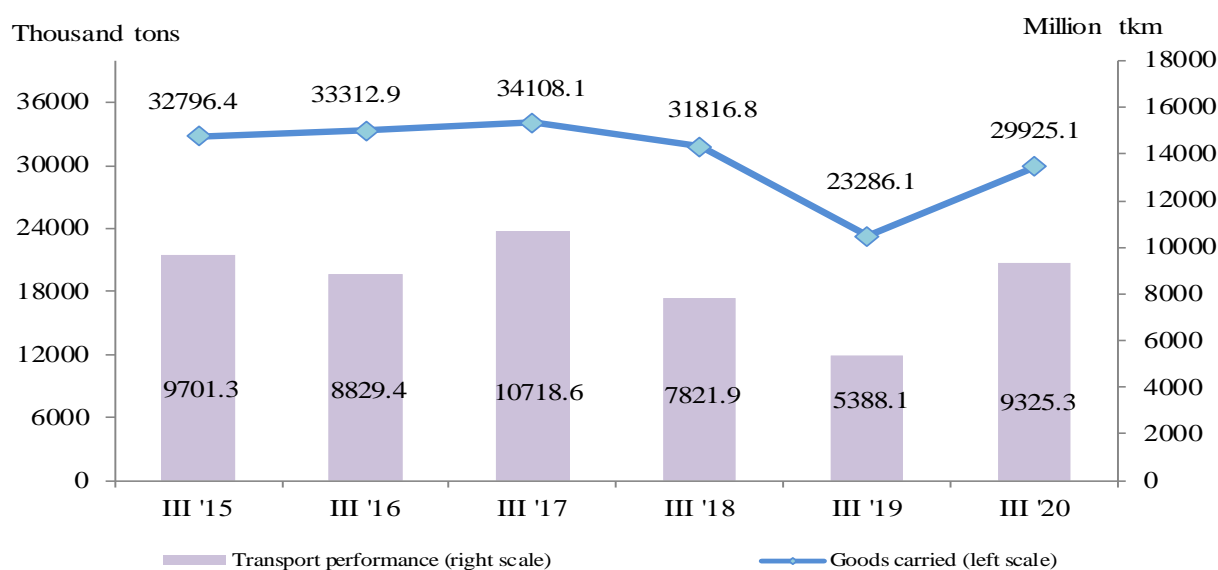
According to preliminary data during the third quarter of 2020 in comparison with the same quarter of 2019 the goods carried and the transport performance by the freight land and water transport increased. At the same time in the third quarter of 2020 there was a decrease, both in the transported passengers (by 25.9%) and the transport performance (by 44.8%) from the passenger transport compared to the same quarter of the previous year.

Freight land transport

In the third quarter of 2020 the **transported goods** by land transport were 29 925.1 thousand tons or by 6 639 thousand tons more than the third quarter of 2019 (Figure 3). A decline of 36.8% was registered only by the transported goods from the pipeline transport.

The **transport performance** also grew compared to the same quarter of 2019 and reached 9 325.3 million tkms.

Figure 3. Transported goods and transport performance by land transport by quarters

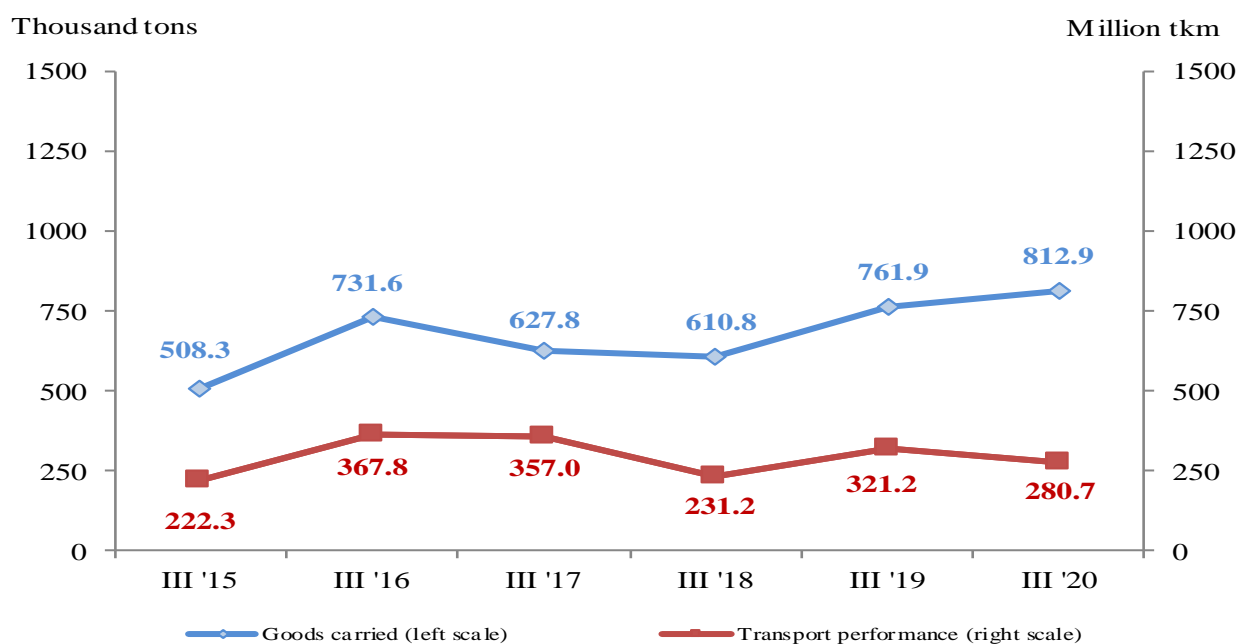


Freight water transport

The **transported goods** by sea and inland waterway transport, which in the current quarter of 2020 have performed only international carriages, increased by 6.7% in comparison with the third quarter of 2019, due to the more transported goods by the inland waterway and maritime transport (Figure 4).

At the same time the **transport performance**, measured in tonne-kilometres, declined by 12.6% compared to the corresponding period of 2019. The inland waterway transport registered a 15.7% decline, due to the less distance on which the goods were transported.

Figure 4. Transported goods and transport performance by water transport by quarters

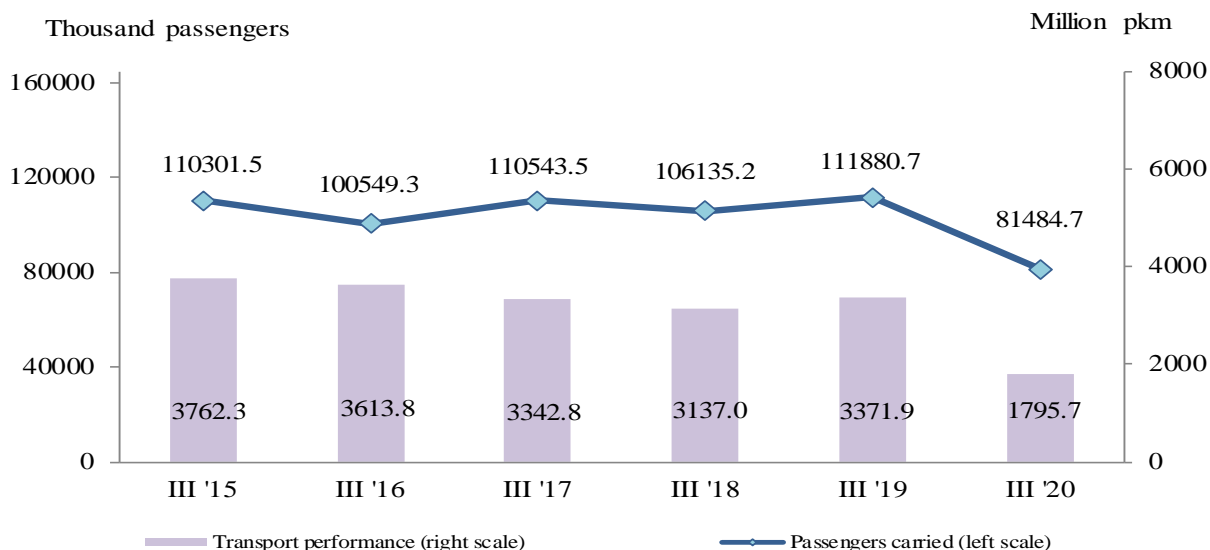


Passengers land transport

The number of the **transported passengers** by land transport in the third quarter of 2020 was 81 484.7 thousand, or by 27.2% less than the same period of the previous year (Figure 5). There was a decline, both in the railway and road carriages by 18.0% and by 27.7%, respectively.

The **transport performance** also declined by 46.7% and reached 1 795.7 million passenger-kilometres (Figure 5).

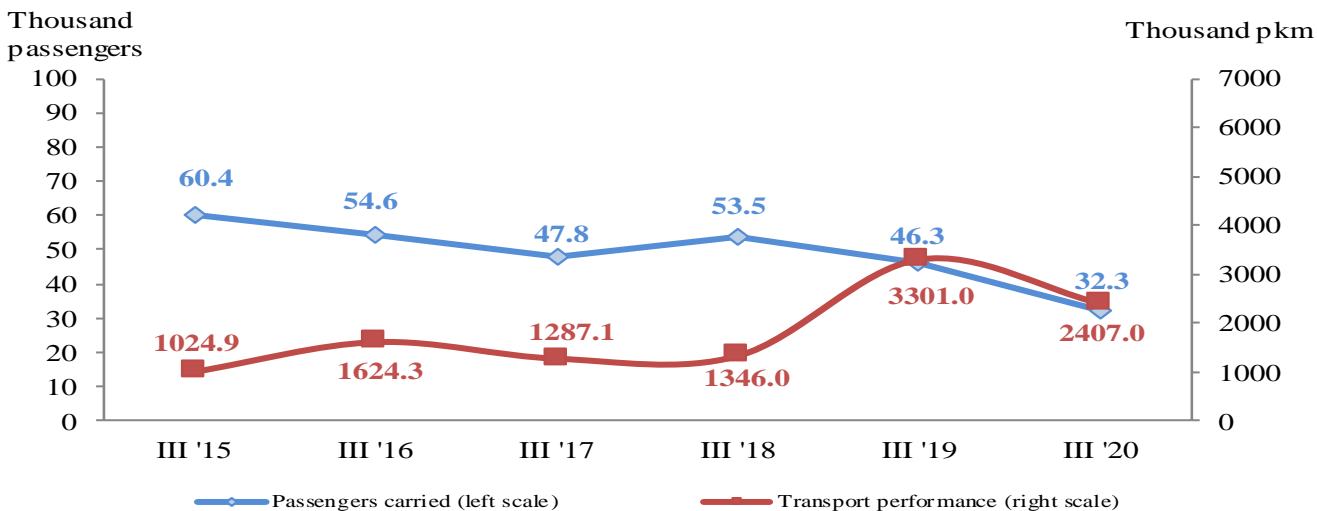
Figure 5. Transported passengers and transport performance by land transport by quarters



Passengers water transport

In the third quarter of 2020 there was a decrease both in the **transported passengers** as well in the **transport performance** by water transport, by 14.0 thousand passengers (30.2%) and 893.2 thousand pkm (27.1%), respectively. The decline was due to the less transported passengers by the inland waterway and maritime transport (Figure 6).

Figure 6. Transported passengers and transport performance by water transport by quarters

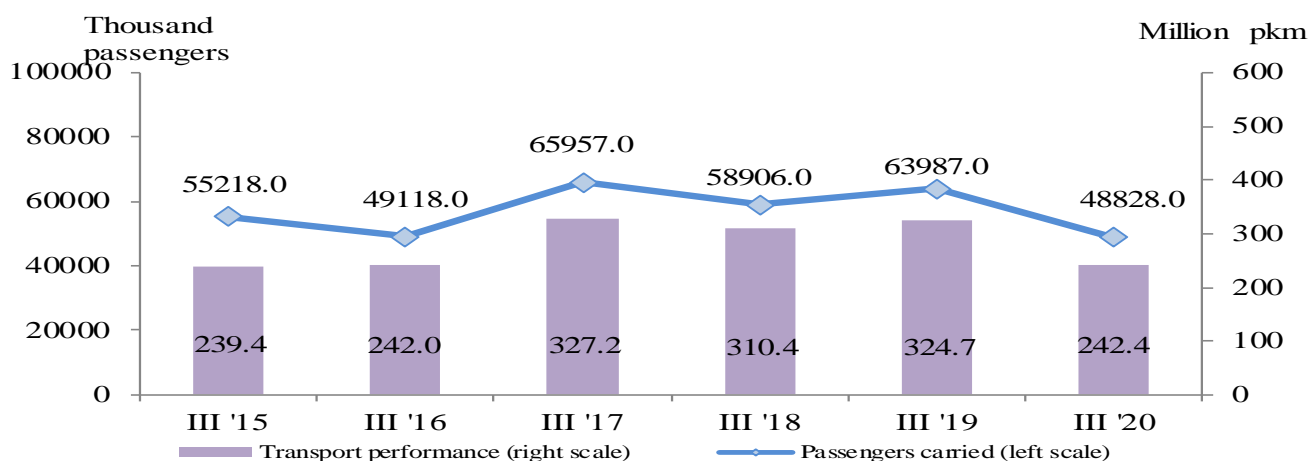


Urban electrical transport

During the period July - September of 2020 the enterprises performing urban electrical transport (tram, trolleybus and metro) transported **48 828.0 thousand passengers** or by 23.7% less than the same period of 2019 (Figure 7). A decline was observed in all types of public transport, but the biggest drop was registered by the metro carriages - 28.4%

The **transport performance** measured in passenger-kilometres also decreased by 25.3% and reached 242.4 thousand pkm.

Figure 7. Transported passengers and transport performance by urban electrical transport by quarters



Methodological notes

Land freight transport covers the freight carriages by road and rail transport from vehicles with Bulgarian registration as well as transmission of goods by pipelines.

Land passenger transport covers the passengers' carriages by road and rail transport from vehicles with Bulgarian registration.

Water transport covers the passengers' and freight carriages and transport performance by maritime and IWW vessels with Bulgarian registration.

Urban electrical transport includes passengers carried and transport performance of trolleybus transport in the country, tramway transport, and metro in Sofia.

Goods carried (tons) - measures the total volume of goods carried **for hire or reward** between two places (place of loading and place of unloading).

Transport performance of freight transport (tonne-kilometres) - corresponds to the transportation of one ton over one kilometre.

Passengers carried (in numbers) - measures the total number of passengers **with paid fares** carried by the corresponding type of transport between two places (place of embarkation and place of disembarkation).

Transport performance of passenger transport (passenger-kilometres) - corresponds to the transportation of one passenger over one kilometre.

Annex

Table 1

**Main indicators of the freight transport activity,
third quarter of 2019 and 2020**

Freight transport	III quarter 2019	III quarter 2020	Index of change compared to the third quarter of 2019
Land transport - transported goods			
Total - thousand tons	23286.1	29925.1	128.5
National	16982.5	20558.4	121.1
International	6303.6	9366.7	148.6
Land transport - transport performance			
Total - million tkm	5388.1	9325.3	173.1
National	1649.3	2565.3	155.5
International	3738.8	6760.0	180.8
Water transport - transported goods			
Total - thousand tons	761.9	812.9	106.7
National	-	-	-
International	761.9	812.9	106.7
Water transport - transport performance			
Total - million tkm	321.2	280.7	87.4
National	-	-	-
International	321.2	280.7	87.4

„-“ - no case.

Table 2

**Main indicators of the passenger transport activity,
third quarter of 2019 and 2020**

Passenger transport	III quarter 2019	III quarter 2020	Index of change compared to the third quarter of 2019
Land transport - transported passengers			
Total - thousands	111880.7	81484.7	72.8
National	110776.6	81302.1	73.4
International	1104.1	182.6	16.5
Land transport - transport performance			
Total - million pkm	3371.9	1795.7	53.3
National	2666.7	1651.1	61.9
International	705.2	144.6	20.5
Water transport - transported passengers			
Total - thousands	46.3	32.3	69.8
National	6.5	5.4	83.1
International	39.8	26.9	67.6
Water transport - transport performance			
Total - million pkm	3.3	2.4	72.9
National	0.2	0.1	43.60
International	3.1	2.3	74.7
Urban electrical transport - transported passengers			
Total - thousands	63987.0	48828.0	76.3
Urban electrical transport - transport performance			
Total - million pkm	324.7	242.4	74.7