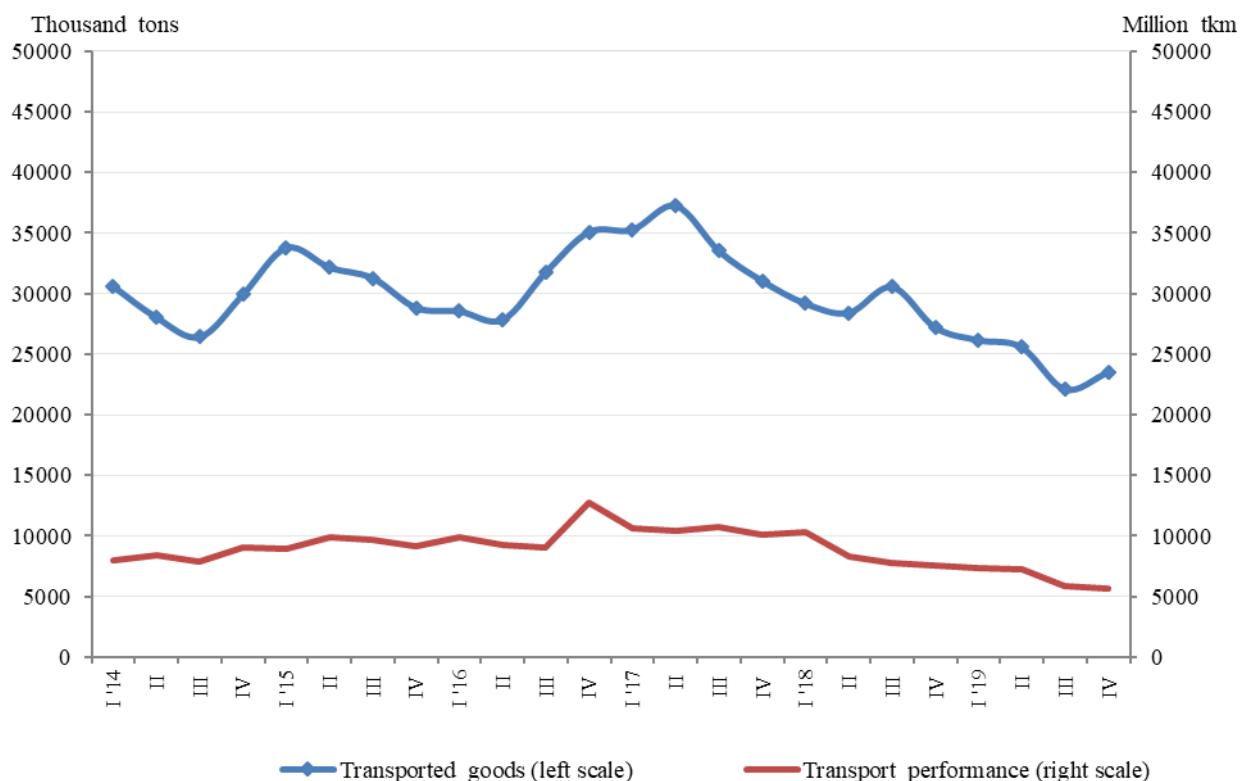


GOODS AND PASSENGERS CARRIED AND TRANSPORT PERFORMANCE BY MODE OF TRANSPORT IN THE FOURTH QUARTER OF 2019 (PRELIMINARY DATA)

Quarterly changes

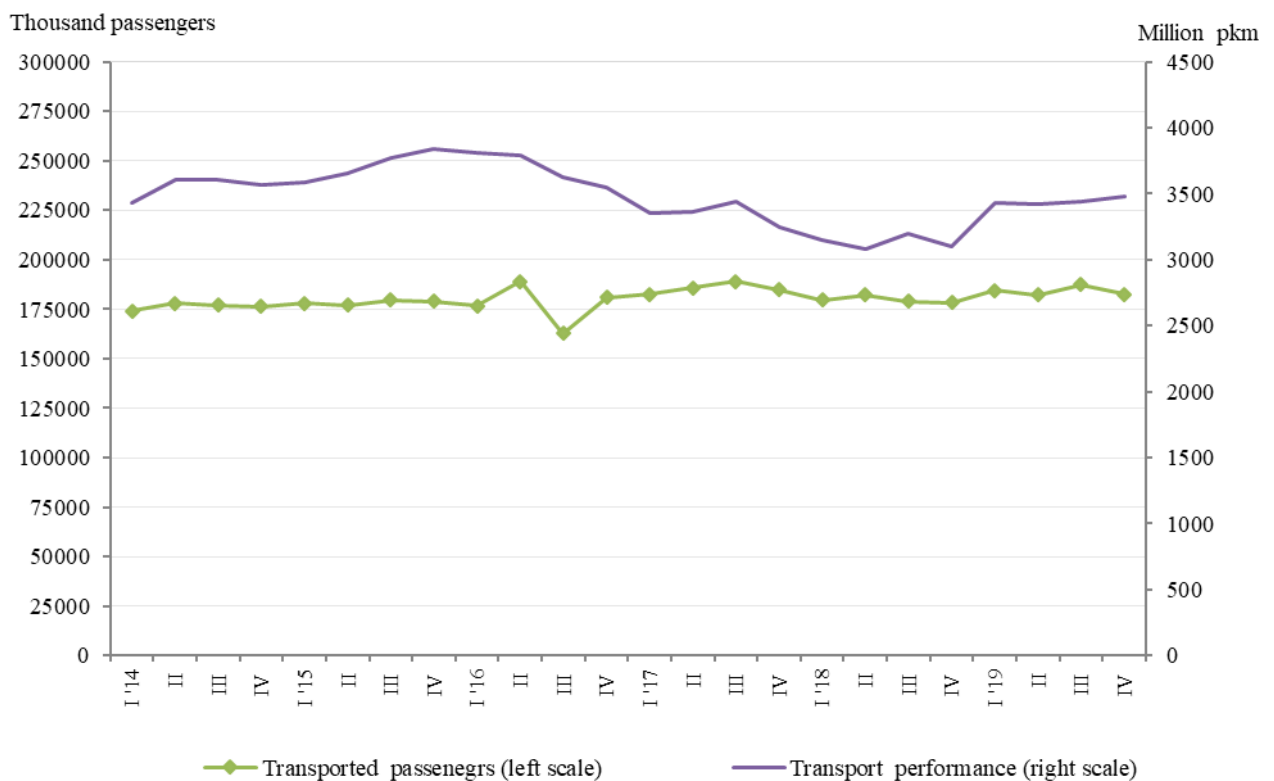
According to preliminary seasonally adjusted data in the fourth quarter of 2019 compared to the previous quarter there was an increased in transported goods by 6.3% from the **freight transport**. The transport performance fell by 3.2% (Figure 1).

**Figure 1. Goods carried and transport performance by freight transport
 (Seasonally adjusted data)**



The passengers carried from **passenger transport** (land, water and urban electrical transport) decreased by 2.6% while the transport performance increased by 1.3% compared to the third quarter of 2019 (Figure 2).

Figure 2. Transported passengers and transport performance by passenger transport (Seasonally adjusted data)



Annual changes

According to preliminary data during the fourth quarter of 2019 in comparison with the same period of 2018 there was a decrease both in the goods carried and in the transport performance by the freight land and water transport.

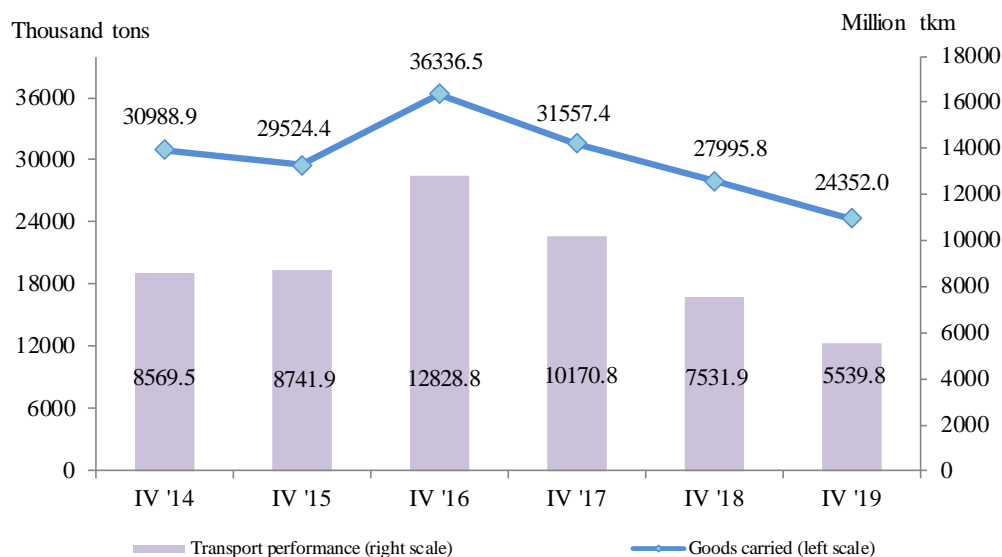
In the fourth quarter of 2019 the transported passengers and the transport performance by passenger transport (land, water and urban electrical transport) increased compared to the same period of the previous year, respectively by 1.4% and 12.3%.

Freight land transport

In the fourth quarter of 2019 the **transported goods** by land transport were 24 352.0 thousand tons or by 3 643.8 thousand tons less than the fourth quarter of 2018 (Figure 3), which is mainly due the national and international carriages of the road transport.

The **transport performance** also fell and reached 5 539.8 million tkm (Figure 3). The decrease was due to the less average distance travelled by the international carriages.

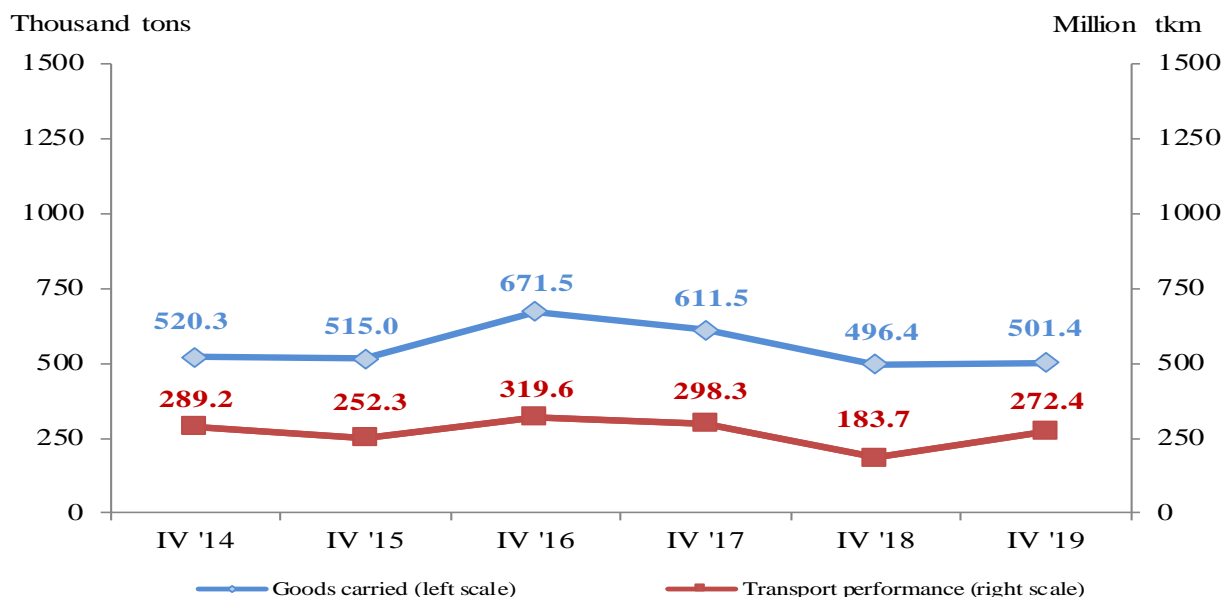
Figure 3. Transported goods and transport performance by land transport by quarters



Freight water transport

The **transported goods** by maritime and inland waterway transport in the fourth quarter of 2019 rose by 5.0 thousand tons in comparison with the same quarter of 2018, due to the increased volume of transported goods by the international carriages (Figure 4). **The transport performance** also grew by 272.4 million tkm due to the larger distance at which the goods by the maritime transport were transported.

Figure 4. Transported goods and transport performance by water transport by quarters

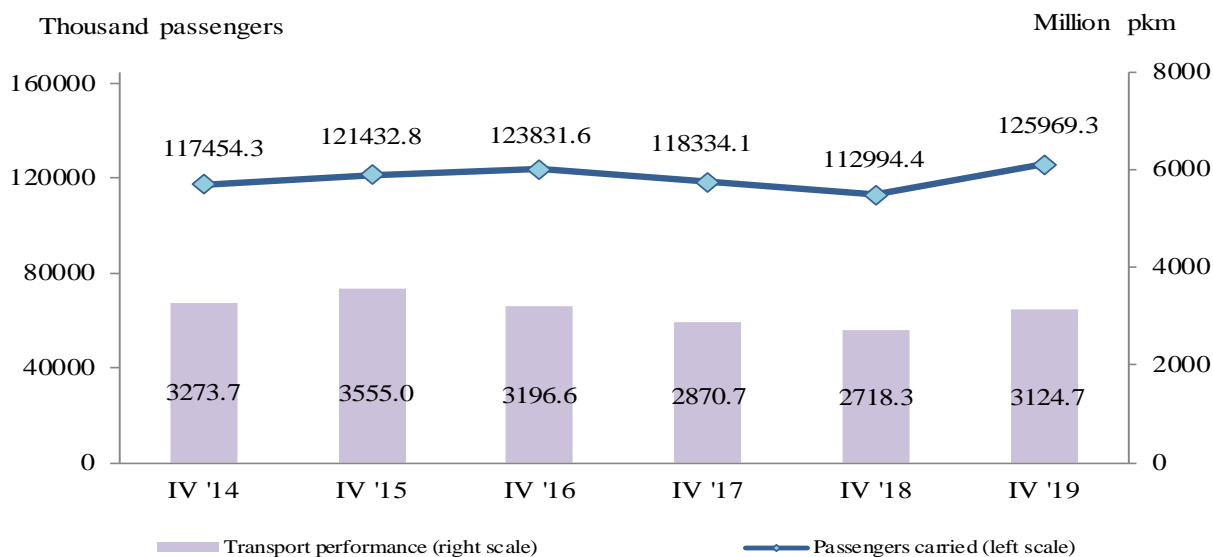


Passengers land transport

The number of the **transported passengers** by land transport in the fourth quarter of 2019 was 125 969.3 thousand, or 11.5% more than the same period of the previous year (Figure 5), which was due to the increased number of transported passengers by the bus transport.

At the same time the **transport performance** also grew by 15.0% and reached 3 124.7 million passenger-kilometres (Figure 5).

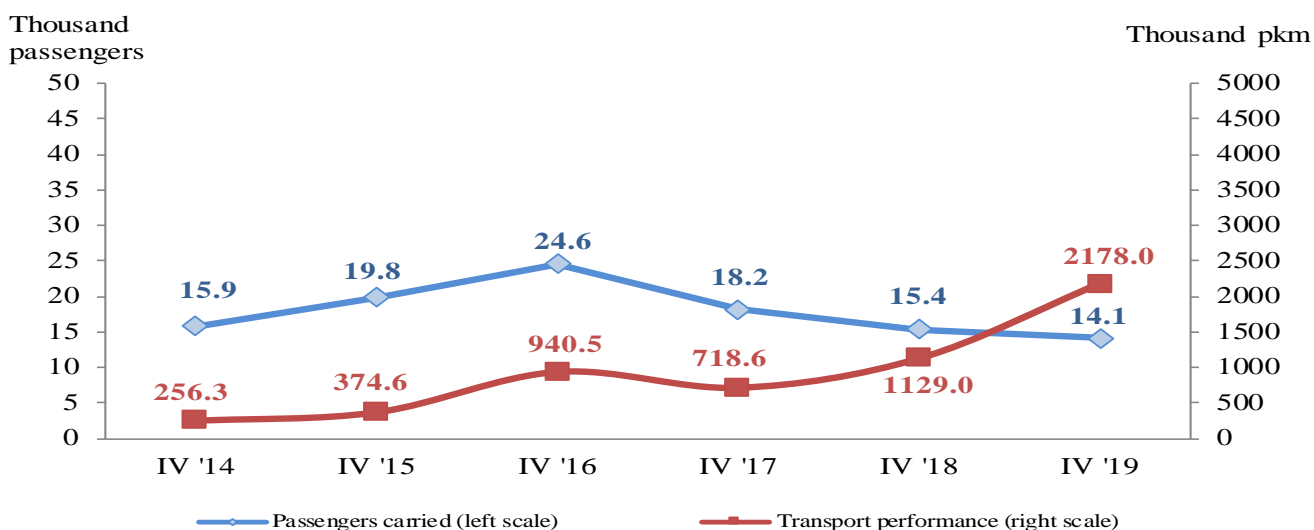
Figure 5. Transported passengers and transport performance by land transport by quarters



Passengers water transport

In the fourth quarter of 2019 the **transported passengers** by the water transport decreased by 8.4%. The **transport performance** grew by 1 049.6 thousand pkm compared to the fourth quarter of the previous year due to the larger distance at which the passengers by the maritime transport were transported.

Figure 6. Transported passengers and transport performance by water transport by quarters

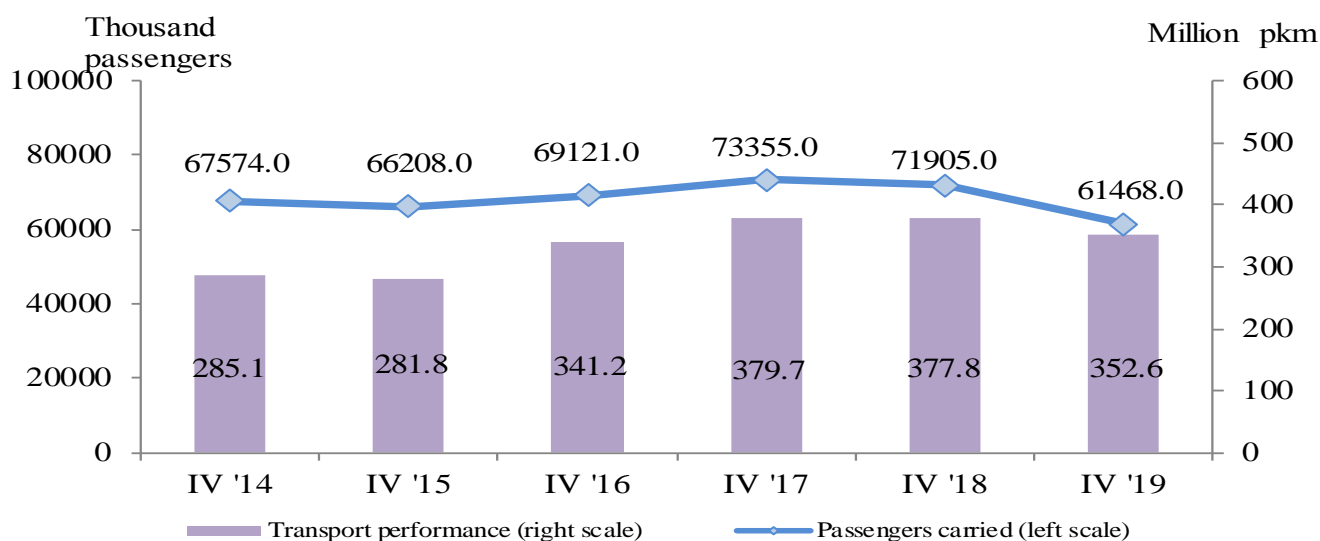


Urban electrical transport

During the period October - December of 2019 the enterprises performing urban electrical transport (tram, trolleybus and metro) transported 61 468.0 **thousand passengers** or 10 437.0 thousand passengers less than the same period of 2018 (Figure 7). Only the trolleybus transport registered an increase by 4.7%.

The **transport performance** measured in passenger-kilometres also decreased (by 6.7%), which was mainly due to the tram carriages.

Figure 7. Transported passengers and transport performance by urban electrical transport by quarters



Methodological notes

Land freight transport covers the freight carriages by road and rail transport from vehicles with Bulgarian registration as well as transmission of goods by pipelines.

Land passenger transport covers the passengers' carriages by road and rail transport from vehicles with Bulgarian registration.

Water transport covers the passengers' or freight carriages and transport performance by maritime and IWW vessels with Bulgarian registration.

Urban electrical transport includes passengers carried and transport performance of trolleybus transport in the country, tramway transport, and metro in Sofia.

Goods carried (tons) - measures the total volume of goods carried **for hire or reward** between two places (place of loading and place of unloading).

Transport performance of freight transport (tonne-kilometres) - corresponds to the transportation of one ton over one kilometre.

Passengers carried (in numbers) - measures the total number of passengers **with paid fares** carried by the corresponding type of transport between two places (place of embarkation and place of disembarkation).

Transport performance of passenger transport (passenger-kilometres) - corresponds to the transportation of one passenger over one kilometre.

Annex

Table 1

Main indicators of the freight transport activity, fourth quarter of 2018 and 2019

Freight transport	IV-th quarter 2018	IV-th quarter 2019	Index of change compared to the fourth quarter of 2018
Land transport - transported goods			
Total - thousand tons	27995.8	24352.0	87.0
National	19307.4	17663.8	91.5
International	8688.4	6688.2	77.0
Land transport - transport performance			
Total - million tkm	7531.9	5539.8	73.6
National	1873.7	1713.4	91.4
International	5658.2	3826.4	67.6
Water transport - transported goods			
Total - thousand tons	496.4	501.4	101.0
National	12.0	0.0	0.0
International	484.4	501.4	103.5
Water transport - transport performance			
Total - million tkm	183.7	272.4	148.3
National	3.0	0.0	0.0
International	180.7	272.4	150.7

Table 2

**Main indicators of the passenger transport activity,
fourth quarter of 2018 and 2019**

Passenger transport	IV-th quarter 2018	IV-th quarter 2019	Index of change compared to the fourth quarter of 2018
Land transport - transported passengers			
Total - thousands	112994.4	125969.3	111.5
National	112386.2	125163.7	111.4
International	608.2	805.6	132.5
Land transport - transport performance			
Total - million pkm	2718.3	3124.7	115.0
National	2311.9	2563.9	110.9
International	406.4	560.8	138.0
Water transport - transported passengers			
Total - thousands	15.4	14.1	91.6
National	-	-	-
International	15.4	14.1	91.6
Water transport - transport performance			
Total - million pkm	1.1	2.2	192.9
National	-	-	-
International	1.1	2.2	192.9
Urban electrical transport - transported passengers			
Total - thousands	71905.0	61468.0	85.5
Urban electrical transport - transport performance			
Total - million pkm	377.8	352.6	93.3

„-“ - no case.