

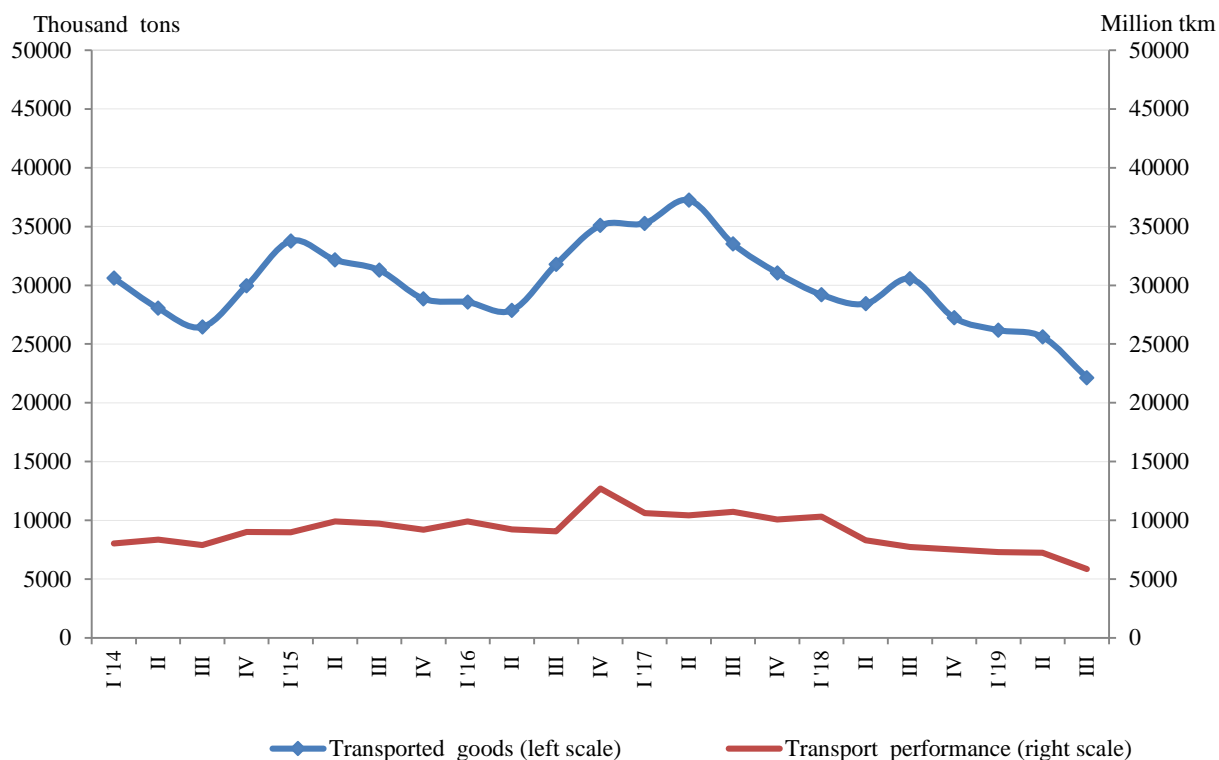


## **GOODS AND PASSENGERS CARRIED AND TRANSPORT PERFORMANCE BY MODE OF TRANSPORT IN THE THIRD QUARTER OF 2019 (PRELIMINARY DATA)**

### Quarterly changes

According to preliminary seasonally adjusted data in the third quarter of 2019 compared to the previous quarter there was a decrease in transported goods by 13.5% from the **freight transport**. The transport performance fell by 19.0% (Figure 1).

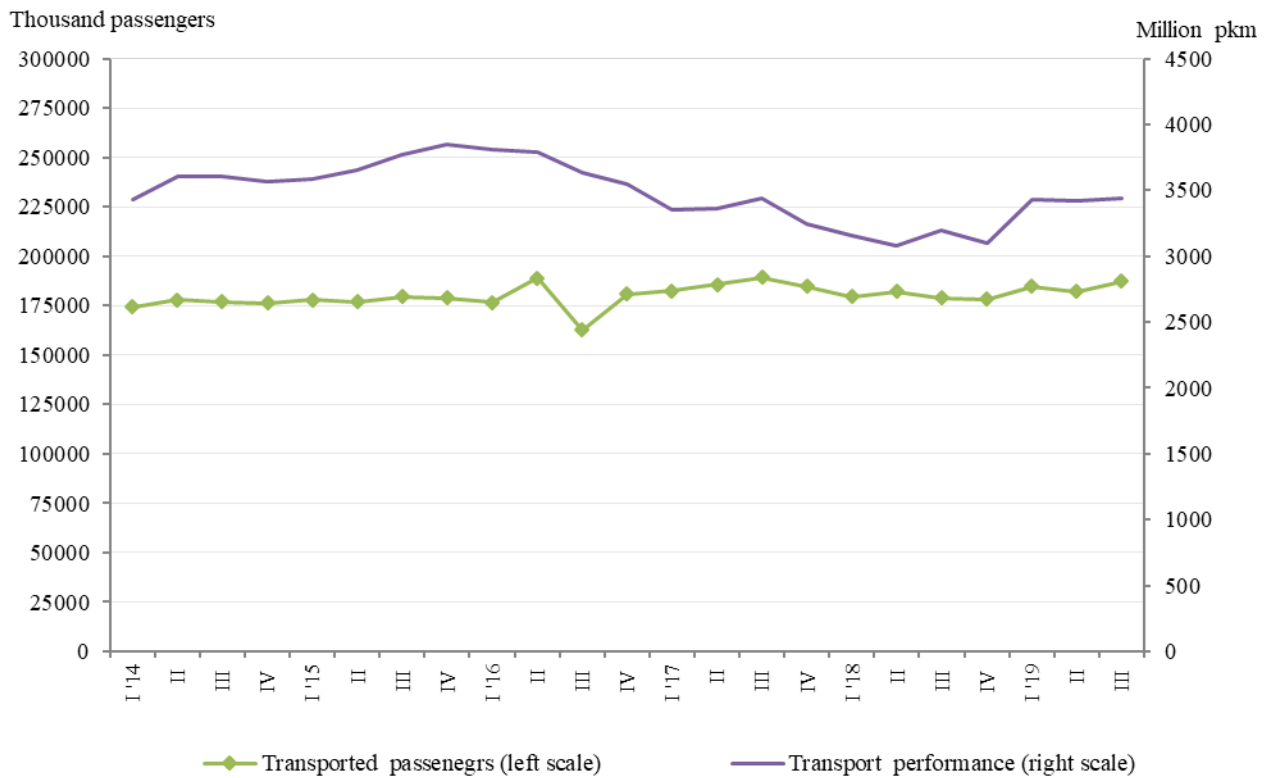
**Figure 1. Goods carried and transport performance by freight transport  
 (Seasonally adjusted data)**





The passengers carried and the transport performance from **passenger transport** (land, water and urban electrical transport) increased by 2.9% and 0.6% compared to the second quarter of 2019 (Figure 2).

**Figure 2. Transported passengers and transport performance by passenger transport (Seasonally adjusted data)**





## Annual changes

According to preliminary data during the third quarter of 2019 in comparison with the same period of 2018 there was a decrease both in the goods carried and in the transport performance by the freight land and water transport.

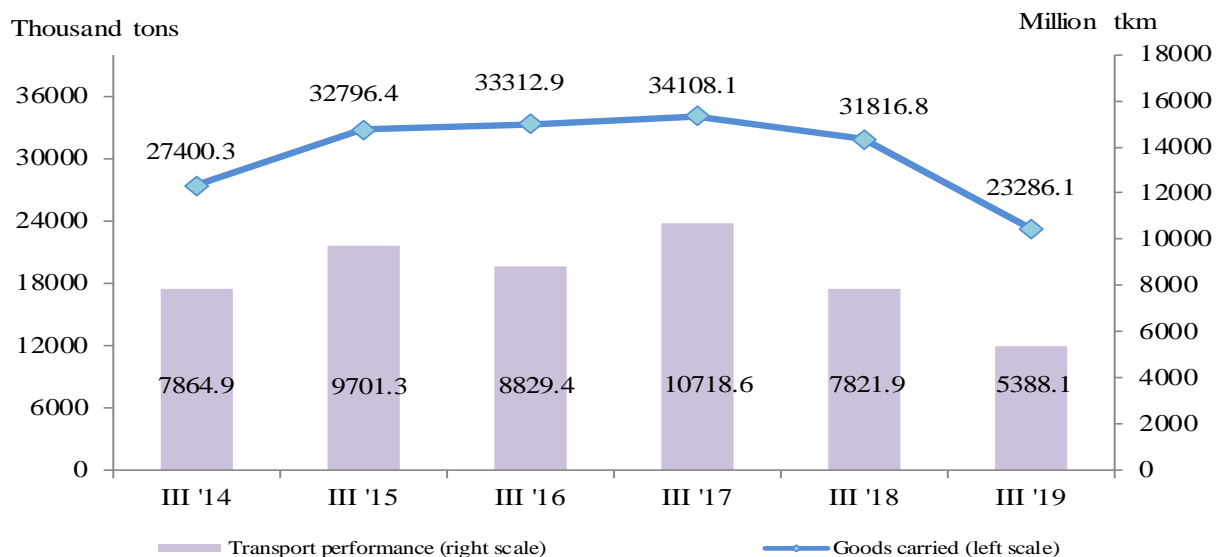
In the third quarter of 2019 the transported passengers and the transport performance by passenger transport (land, water and urban electrical transport) increased compared to the same period of the previous year, respectively by 6.6% and 7.3%.

## Freight land transport

In the third quarter of 2019 the **transported goods** by land transport were 23 286.1 thousand tons or by 8 530.7 thousand tons less than the third quarter of 2018 (Figure 3), which is mainly due the national carriages of the railway and road transport.

The **transport performance** also fell and reached 5 388.1 million tkm (Figure 3). The decrease was due to the less average distance travelled by the international carriages.

**Figure 3. Transported goods and transport performance by land transport by quarters**

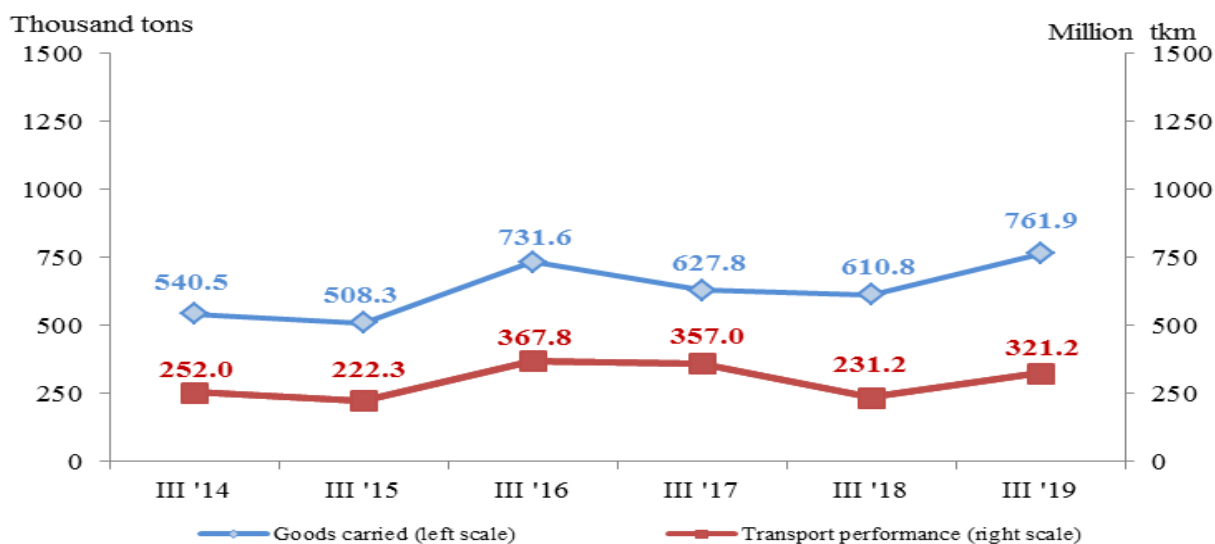


## Freight water transport

The **transported goods** by maritime and inland waterway transport in the third quarter of 2019 rose by 151.1 thousand tons in comparison with the same quarter of 2018, due to the increased volume of transported goods by the international carriages (Figure 4). **The transport performance** also grew by 321.2 million tkm due to the larger distance at which the goods by the maritime transport were transported.



**Figure 4. Transported goods and transport performance by water transport by quarters**

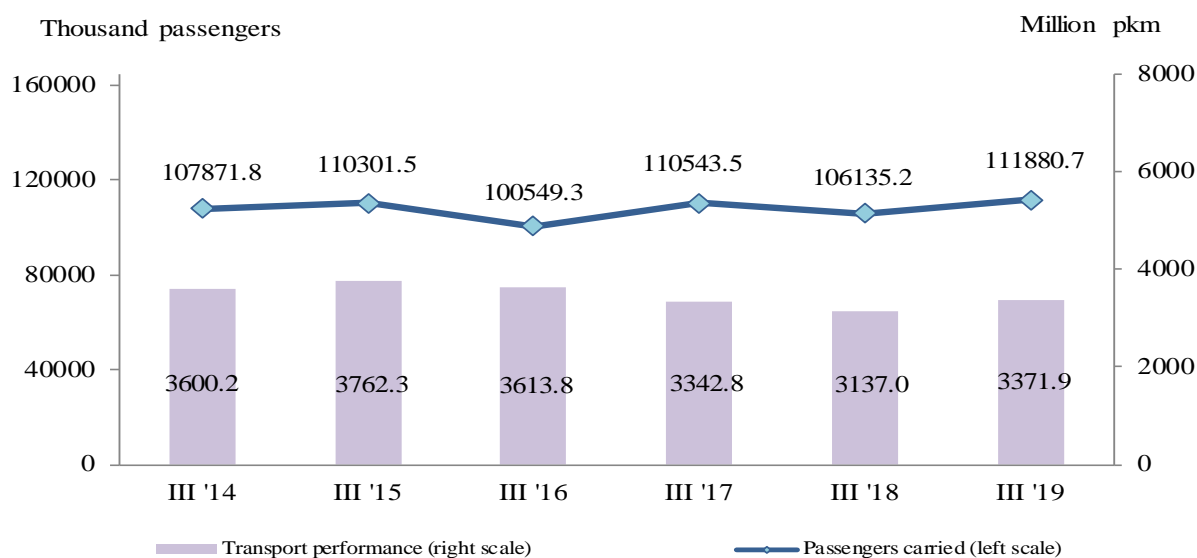


### Passengers land transport

In the third quarter of 2019 the **transported passengers** by land transport were 111 880.7 thousand, or 5.4% more than the same period of the previous year (Figure 5), which was due to the increased number of transported passengers both by the bus and railway transport.

At the same time the **transport performance** grew by 7.5% and reached 3 371.9 million passenger-kilometres (Figure 5).

**Figure 5. Transported passengers and transport performance by land transport by quarters**

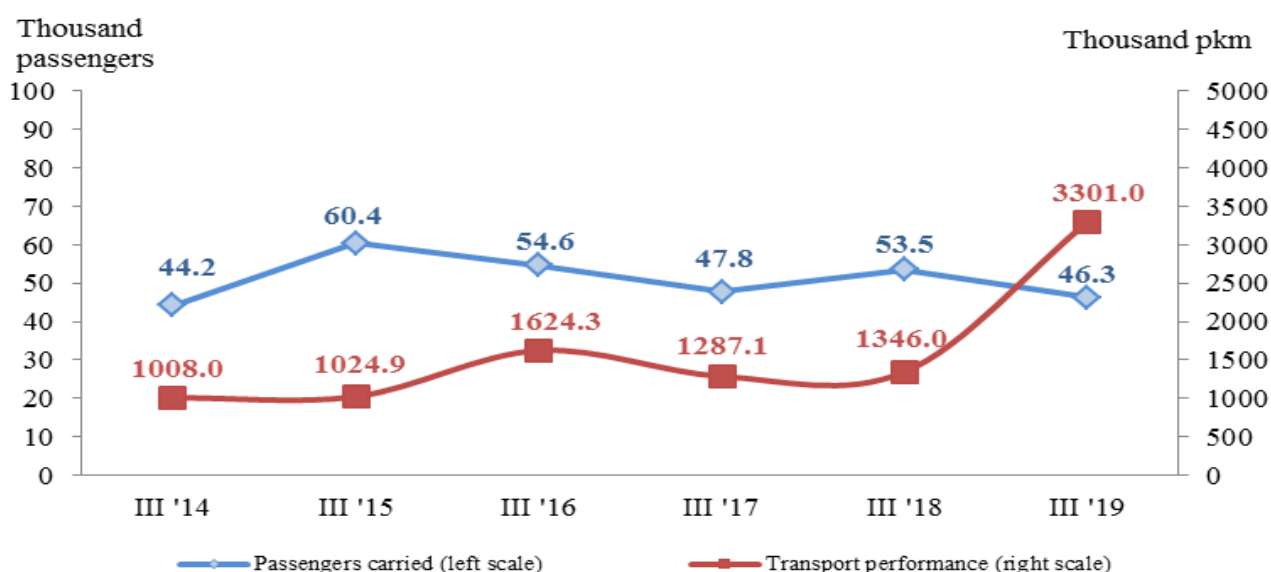




## Passengers water transport

In the third quarter of 2019 the **transported passengers** decreased by 13.5%. The **transport performance** grew by 1 954.7 thousand pkm compared to the same quarter of the previous year due to the larger distance at which the passengers by the maritime transport were transported .

**Figure 6. Transported passengers and transport performance by water transport by quarters**



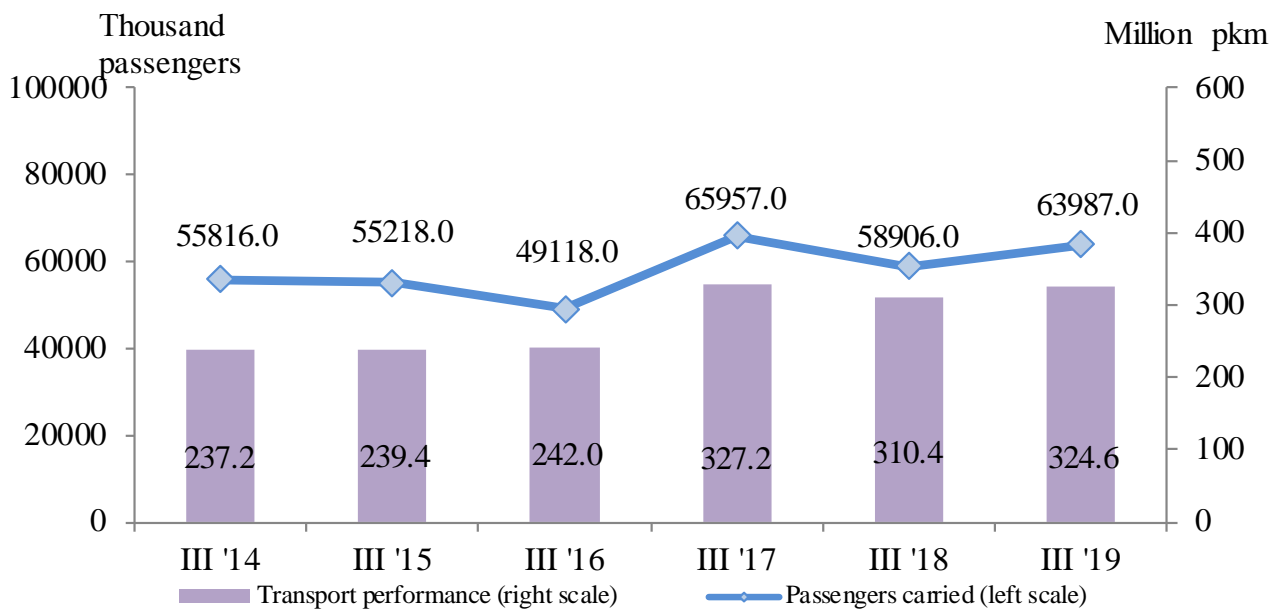
## Urban electrical transport

During the period July - September of 2019 the enterprises performing urban electrical transport (tram, trolleybus and metro) transported 63 987 **thousand passengers** or 5 081 thousand passengers more in comparison with the same period of 2018 (Figure 7). The largest increase was in passengers transported by tram - 20.3%.

The **transport performance** measured in passenger-kilometres also grew (by 4.6%). A decrease by 0.5% was registered only in the metro carriages.



**Figure 7. Transported passengers and transport performance by urban electrical transport by quarters**





## Methodological notes

**Land freight transport** covers the freight carriages by road and rail transport from vehicles with Bulgarian registration as well as transmission of goods by pipelines.

**Land passenger transport** covers the passengers' carriages by road and rail transport from vehicles with Bulgarian registration.

**Water transport** covers the passengers' or freight carriages and transport performance by maritime and IWW vessels with Bulgarian registration.

**Urban electrical transport** includes passengers carried and transport performance of trolleybus transport in the country, tramway transport, and metro in Sofia.

**Goods carried** (tons) - measures the total volume of goods carried **for hire or reward** between two places (place of loading and place of unloading).

**Transport performance of freight transport** (tonne-kilometres) - corresponds to the transportation of one ton over one kilometre.

**Passengers carried** (in numbers) - measures the total number of passengers **with paid fares** carried by the corresponding type of transport between two places (place of embarkation and place of disembarkation).

**Transport performance of passenger transport** (passenger-kilometres) - corresponds to the transportation of one passenger over one kilometre.



Annex

Table 1

Main indicators of the freight transport activity,  
third quarter of 2018 and 2019

Freight transport	III quarter 2018	III quarter 2019	Index of change compared to the third quarter of 2018
Land transport - transported goods			
<b>Total - thousand tons</b>	<b>31816.8</b>	<b>23286.1</b>	<b>73.2</b>
National	23564.6	16982.5	72.1
International	8252.2	6303.6	76.4
Land transport - transport performance			
<b>Total - million tkm</b>	<b>7821.9</b>	<b>5388.1</b>	<b>68.9</b>
National	2610.6	1649.3	63.2
International	5211.3	3738.8	71.7
Water transport - transported goods			
<b>Total - thousand tons</b>	<b>610.8</b>	<b>761.9</b>	<b>124.7</b>
National	0.7	0.0	0.0
International	610.1	761.9	124.9
Water transport - transport performance			
<b>Total - million tkm</b>	<b>231.2</b>	<b>321.2</b>	<b>138.9</b>
National	0.5	0.0	0.0
International	230.7	321.2	139.2





**Table 2**

**Main indicators of the passenger transport activity,  
third quarter of 2018 and 2019**

<b>Passenger transport</b>	<b>III quarter 2018</b>	<b>III quarter 2019</b>	<b>Index of change compared to the third quarter of 2018</b>
Land transport - transported passengers			
<b>Total - thousands</b>	<b>106135.2</b>	<b>111880.7</b>	<b>105.4</b>
National	105166.2	110776.6	105.3
International	969.0	1104.1	113.9
Land transport - transport performance			
<b>Total - million pkm</b>	<b>3137.0</b>	<b>3371.9</b>	<b>107.5</b>
National	2520.8	2666.7	105.8
International	616.2	705.2	114.4
Water transport - transported passengers			
<b>Total - thousands</b>	<b>53.5</b>	<b>46.3</b>	<b>86.5</b>
National	9.4	6.5	69.1
International	44.1	39.8	90.2
Water transport - transport performance			
<b>Total - million pkm</b>	<b>1.4</b>	<b>3.3</b>	<b>245.2</b>
National	0.3	0.2	66.40
International	1.1	3.1	292.9
Urban electrical transport - transported passengers			
<b>Total - thousands</b>	<b>58906.0</b>	<b>63987.0</b>	<b>108.6</b>
Urban electrical transport - transport performance			
<b>Total - million pkm</b>	<b>310.4</b>	<b>324.6</b>	<b>104.6</b>