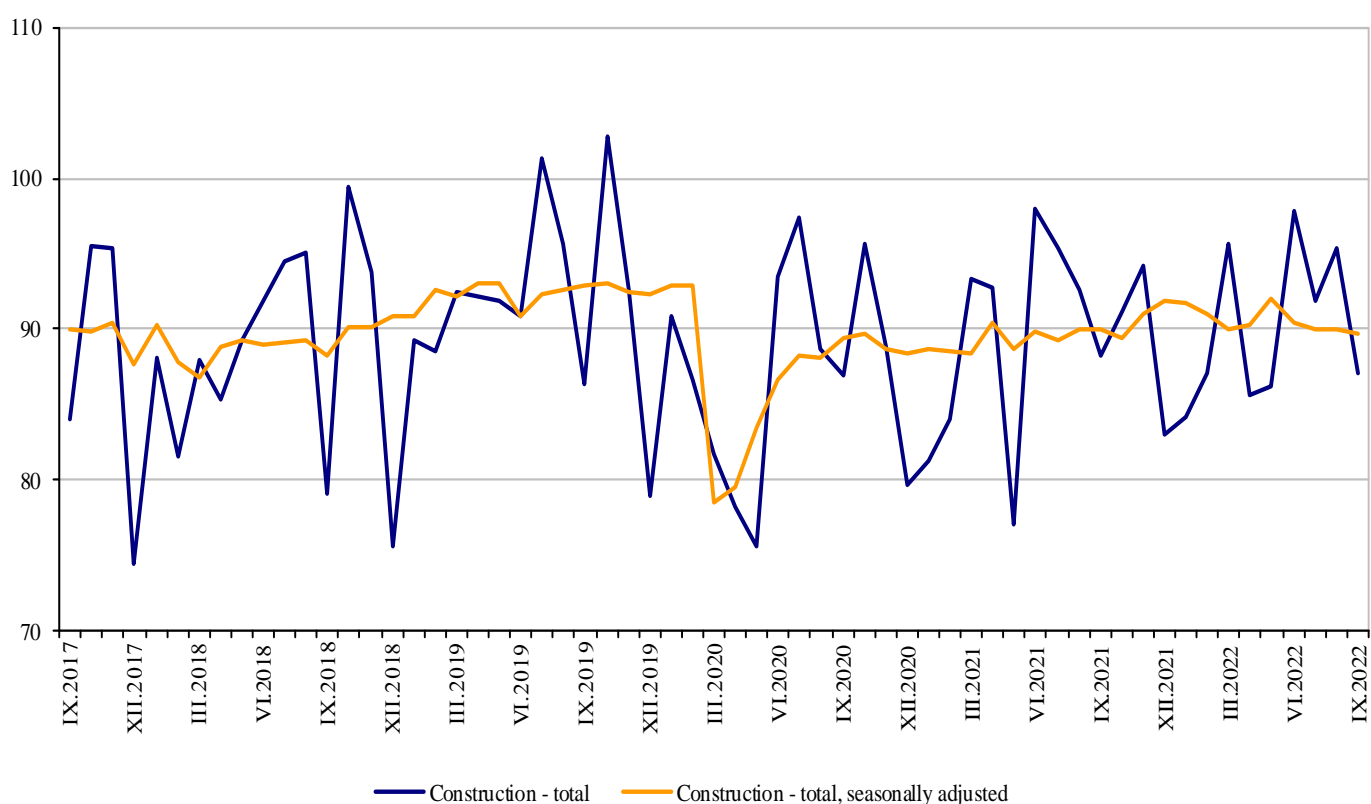


CONSTRUCTION PRODUCTION INDICES IN SEPTEMBER 2022^{1,2}

In September 2022, the index of production in section ‘Construction’ was 0.2% below the level of the previous month (Table 1). The data are preliminary and seasonally adjusted³.

The calendar adjusted data⁴ showed a decrease of 1.3% in construction production compared to the same month of 2021 (Table 3).

Figure 1. Construction Production Indices (2015 = 100)



¹ Data for September 2022 are preliminary.

² The monthly indices show the short-term changes in construction production between two comparable periods. This information can be used to analyse the current state of construction activity in the country, as well as a short-term forecast for its future development. The indices are calculated on the basis of information on hours worked in construction. The data are collected with a monthly sample survey that includes construction enterprises, whose production exceeds 75% of the total production in construction. Construction Production Indices are calculated on the base 2015 = 100.

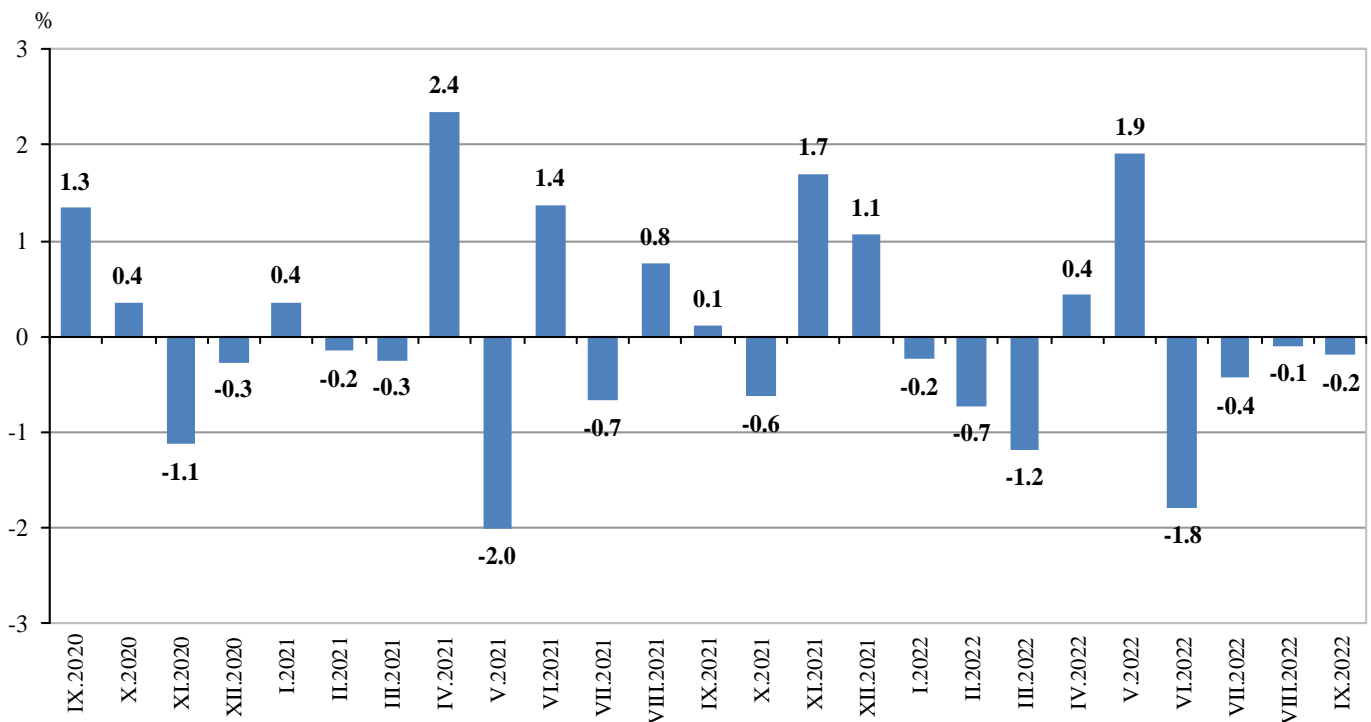
³ Seasonal adjustment is a statistical method that eliminates the seasonal component of time series.

⁴ Calendar adjustment is an adjustment for variations in monthly data caused by calendar effects, the different number of calendar and working days in the months, national holidays and outliers (for example, the presence of more non-working days in May could contribute to the decline in production in some activities).

Monthly changes

In September 2022, the construction production index, calculated from the seasonally adjusted data, was below the level of the previous month. A decrease was observed in the production of building construction - by 0.5%, while the production of civil engineering rose by 0.2% (Table 1).

Figure 2. Changes of the Construction Production Indices compared to the previous month
(Seasonally adjusted, 2015 = 100)



1. Changes of the Construction Production Indices compared to the previous month¹

	2021				2022									(Per cent)
	IX	X	XI	XII	I	II	III	IV	V	VI	VII	VIII	IX	
Construction - total	0.1	-0.6	1.7	1.1	-0.2	-0.7	-1.2	0.4	1.9	-1.8	-0.4	-0.1	-0.2	
Building construction	0.7	-0.3	1.6	1.4	-0.2	-0.2	-1.4	0.3	1.7	-1.2	-0.3	-0.6	-0.5	
Civil engineering	-0.6	-1.1	1.9	0.6	-0.3	-1.5	-1.0	0.7	2.2	-2.5	-0.7	0.6	0.2	

¹ Seasonally adjusted.

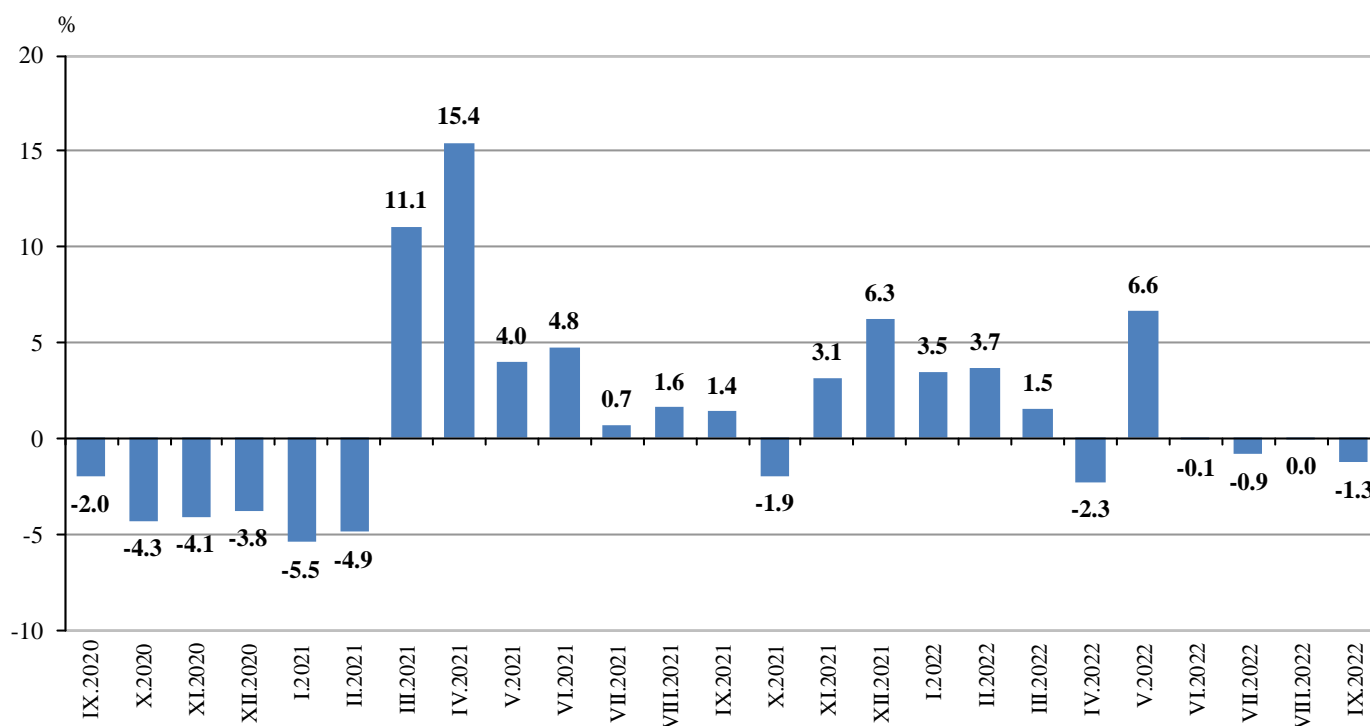
2. Construction Production Indices (Seasonally adjusted, 2015 = 100)

	2021				2022								
	IX	X	XI	XII	I	II	III	IV	V	VI	VII	VIII	IX
Construction - total	90.0	89.5	91.0	91.9	91.7	91.0	90.0	90.4	92.1	90.4	90.0	89.9	89.8
Building construction	96.3	96.0	97.5	98.9	98.7	98.5	97.2	97.4	99.1	97.9	97.6	97.0	96.5
Civil engineering	83.1	82.2	83.7	84.2	83.9	82.7	81.9	82.5	84.3	82.2	81.6	82.1	82.3

Annual changes

On an annual basis in September 2022, the decrease in production in construction, calculated from calendar adjusted data, was determined by the negative rate, both in building construction and in civil engineering, where the drop was 1.7 and 0.8%, respectively (Table 3).

**Figure 3. Changes of the Construction Production Indices compared to the same month of the previous year
(Calendar adjusted, 2015 = 100)**



3. Changes of the Construction Production Indices compared to the same month of the previous year¹

(Per cent)

	2019	2020	2021				2022								
	IX	IX	IX	X	XI	XII	I	II	III	IV	V	VI	VII	VIII	IX
Construction - total	6.2	-2.0	1.4	-1.9	3.1	6.3	3.5	3.7	1.5	-2.3	6.6	-0.1	-0.9	0.0	-1.3
Building construction	12.0	-6.1	1.7	-1.9	3.6	8.5	4.2	6.9	4.3	-1.2	8.3	1.6	0.7	1.6	-1.7
Civil engineering	-1.1	3.8	0.9	-2.0	2.6	3.4	2.5	-0.5	-2.0	-3.7	4.5	-2.3	-2.9	-2.0	-0.8

¹ Calendar adjusted.

4. Construction Production Indices (Calendar adjusted, 2015 = 100)

	2019	2020	2021				2022								
	IX	IX	IX	X	XI	XII	I	II	III	IV	V	VI	VII	VIII	IX
Construction - total	88.8	87.0	88.2	94.2	92.7	83.0	87.6	87.2	93.3	87.7	87.7	96.3	94.9	93.0	87.1
Building construction	98.9	92.9	94.5	100.3	98.6	90.0	95.8	96.0	101.7	94.7	94.7	103.6	102.0	98.8	92.9
Civil engineering	77.5	80.4	81.2	87.4	86.1	75.2	78.3	77.3	84.0	79.9	79.8	88.1	87.0	86.5	80.5