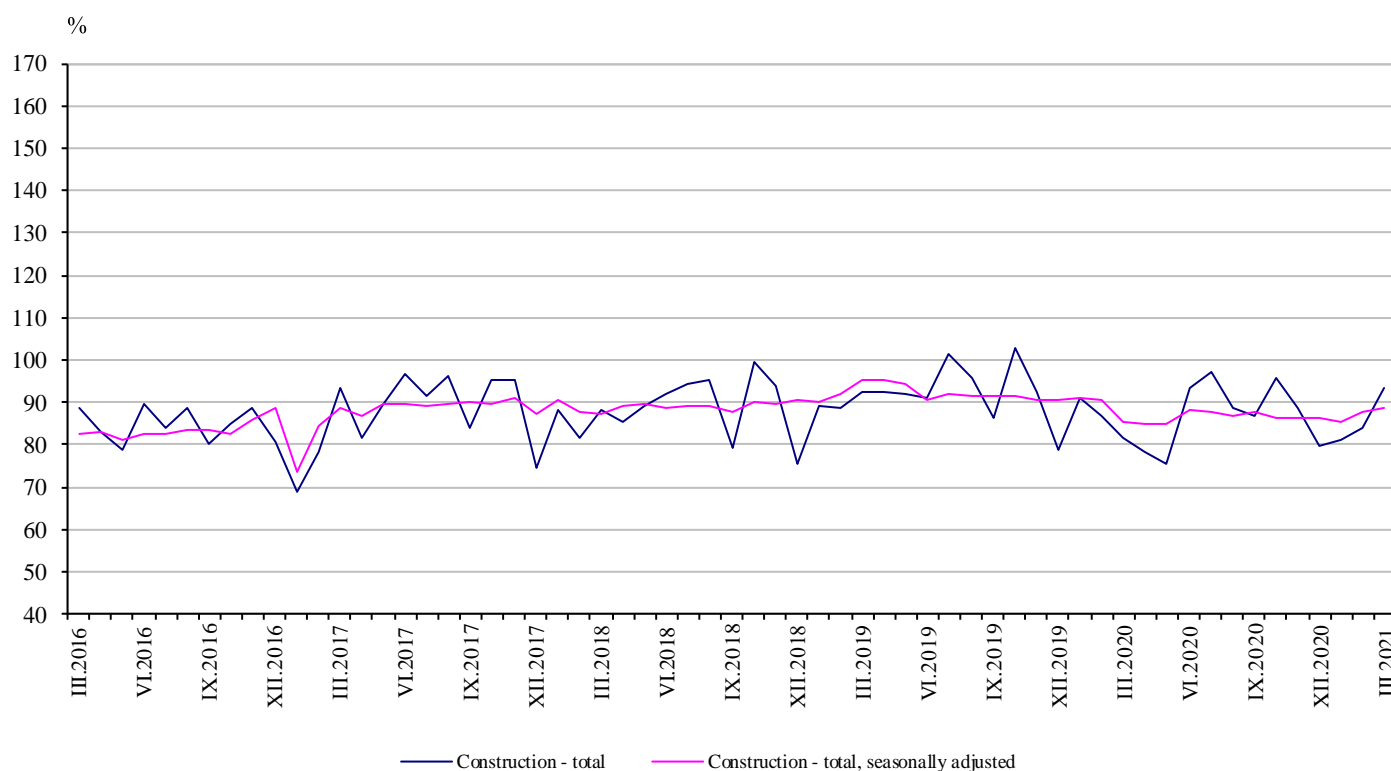


## CONSTRUCTION PRODUCTION INDICES IN MARCH 2021<sup>1,2</sup>

According to the preliminary data, in March 2021 the index of production in section ‘Construction’ calculated on the base of seasonally adjusted data<sup>3</sup> was 1.2% above the level of the previous month (Table 1).

In March 2021 working day adjusted data<sup>4</sup> showed an increase by 11.2% in the construction production, compared to the same month of 2020 (Table 3).

**Figure 1. Construction Production Indices (2015 = 100)**



<sup>1</sup> Data for March 2021 are preliminary.

<sup>2</sup> The monthly indices show the short-term changes in the construction production between two comparable periods. This information can be used to analyse the current state of the construction activity in the country, as well as short-term forecast for its future development. The indices are calculated on the base of information on hours worked in the construction. The data are collected with monthly sample survey, which includes construction enterprises, which production exceeds 75% of the total production in construction. Construction Production Indices are calculated on the base 2015 = 100. Data for 2019 are reconciled.

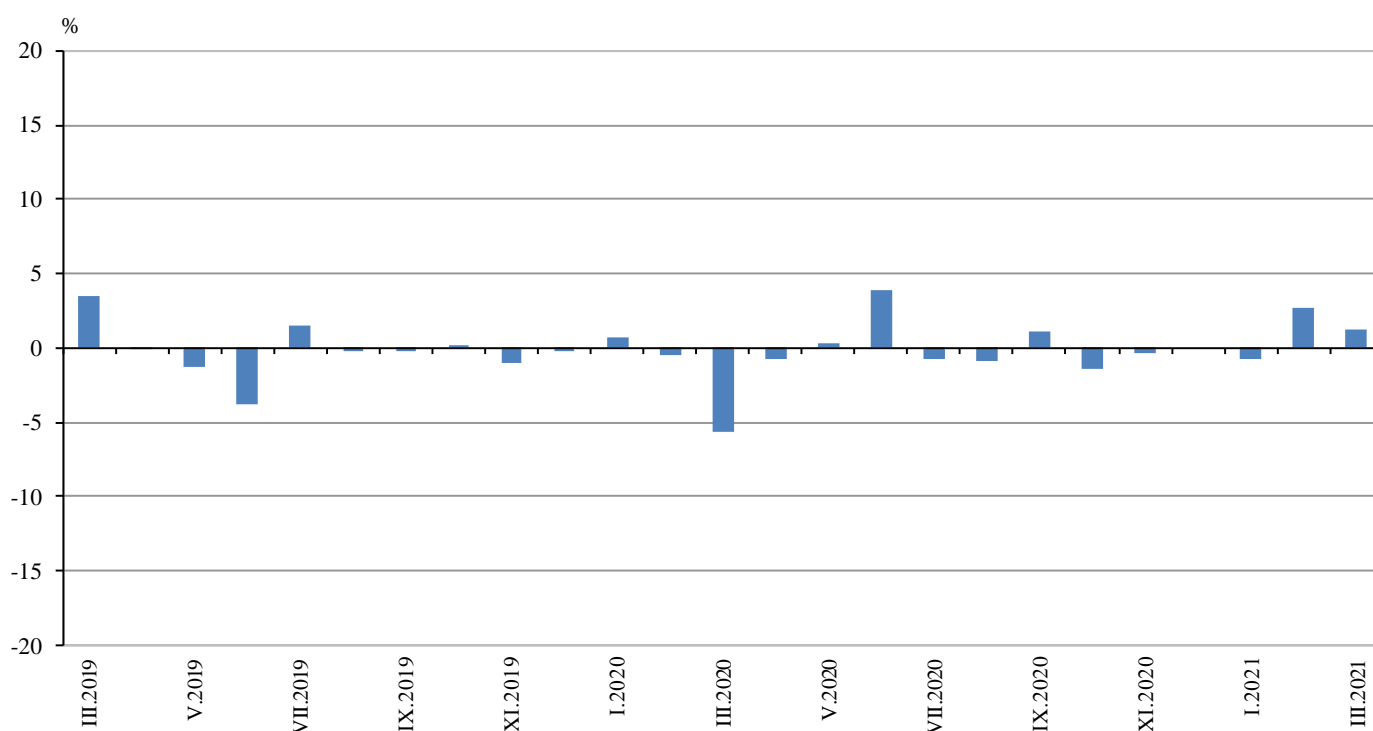
<sup>3</sup> Seasonal adjustment is a statistical method which eliminates the seasonal component of time series.

<sup>4</sup> Working day adjustment is an adjustment for variations in monthly data, caused by calendar effects, different number of calendar and working days in the months, national holidays and outliers (for example the presence of more non-working days in May could contribute to the decline in the production in some activities).

## Monthly changes

In March 2021 the construction production index, calculated from the seasonally adjusted data, was above the level of the previous month. The production index of civil engineering rose by 4.2%, while production of building construction fell by 1.1% (Table 1).

**Figure 2. Changes of the Construction Production Indices compared to the previous month  
(Seasonally adjusted, 2015 = 100)**



### 1. Changes of the Construction Production Indices compared to the previous month<sup>1</sup>

	(Per cent)												
	2020											2021	
	III	IV	V	VI	VII	VIII	IX	X	XI	XII	I	II	III
<b>Construction - total</b>	-5.6	-0.8	0.3	3.9	-0.7	-0.8	1.0	-1.4	-0.4	0.0	-0.7	2.6	1.2
Building construction	-6.2	-0.6	0.0	4.0	-1.2	-1.5	0.8	-1.7	-0.6	-0.7	-0.9	2.6	-1.1
Civil engineering	-4.8	-1.1	0.6	3.7	0.0	0.1	1.4	-1.1	0.0	0.9	-0.6	2.7	4.2

<sup>1</sup> Seasonally adjusted.

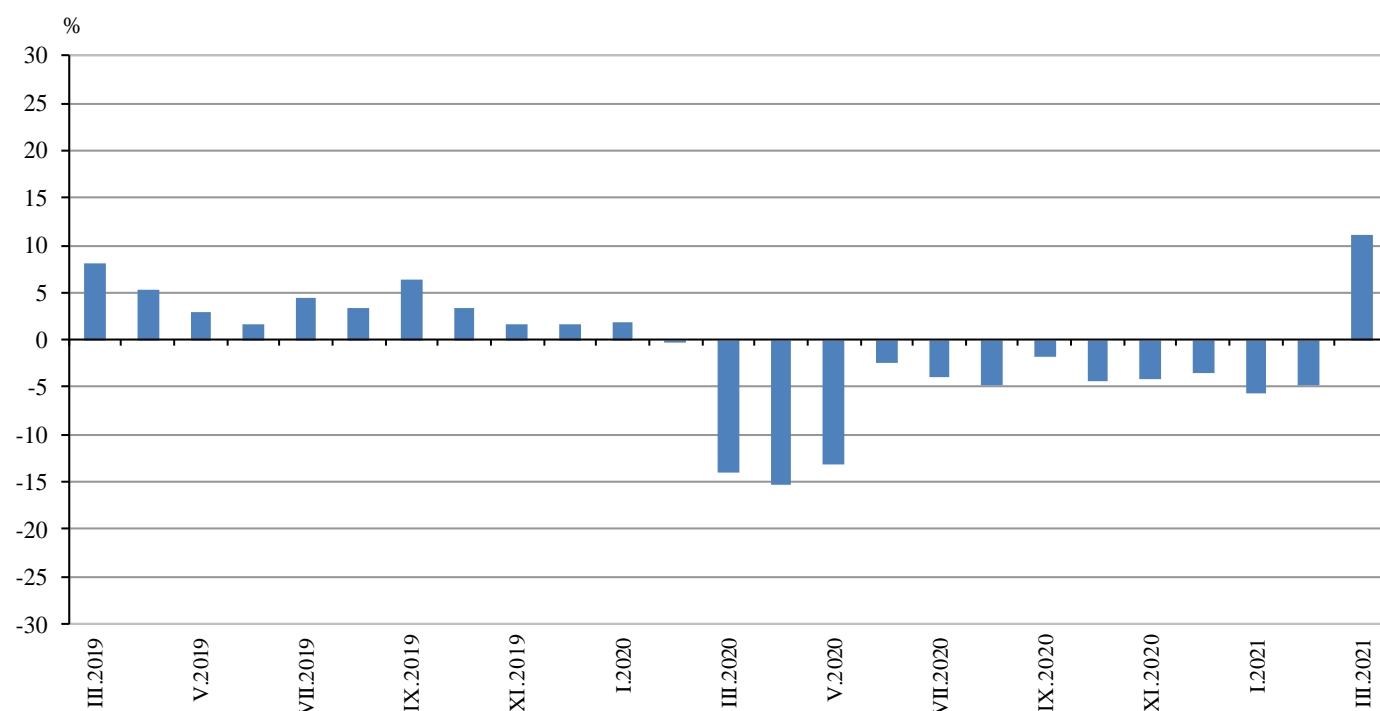
## 2. Construction Production Indices (Seasonally adjusted, 2015 = 100)

	2020												2021		
	III	IV	V	VI	VII	VIII	IX	X	XI	XII	I	II	III		
<b>Construction - total</b>	85.3	84.7	84.9	88.2	87.5	86.8	87.7	86.5	86.2	86.2	85.5	87.8	88.9		
Building construction	93.1	92.6	92.6	96.2	95.1	93.6	94.3	92.8	92.2	91.6	90.8	93.1	92.2		
Civil engineering	76.7	75.9	76.3	79.1	79.2	79.2	80.3	79.5	79.4	80.2	79.7	81.8	85.2		

### Annual changes

On an annual basis in March 2021, the increase of production in construction, calculated from working day adjusted data, was determined from the positive rate in the civil engineering, where the growth was by 15.5% and in the building construction - by 8.0% (Table 3).

**Figure 3. Changes of the Construction Production Indices compared to the same month of the previous year (Working day adjusted, 2015 = 100)**



### 3. Changes of the Construction Production Indices compared to the same month of the previous year<sup>1</sup>

(Per cent)

	2018	2019	2020										2021		
	III	III	III	IV	V	VI	VII	VIII	IX	X	XI	XII	I	II	III
<b>Construction - total</b>	-3.5	8.0	-13.9	-15.3	-13.2	-2.5	-3.9	-4.7	-1.9	-4.4	-4.1	-3.6	-5.7	-4.8	11.2
Building construction	-0.9	13.3	-17.0	-17.5	-15.3	-4.2	-6.3	-8.5	-6.0	-8.3	-8.0	-8.0	-9.7	-8.6	8.0
Civil engineering	-6.7	1.0	-9.5	-11.9	-10.2	0.0	-0.5	0.6	3.9	1.0	1.2	2.5	0.4	0.6	15.5

<sup>1</sup> Working day adjusted.

### 4. Construction Production Indices (Working day adjusted, 2015 = 100)

	2018	2019	2020										2021		
	III	III	III	IV	V	VI	VII	VIII	IX	X	XI	XII	I	II	III
<b>Construction - total</b>	89.0	96.1	82.7	77.8	79.0	92.1	95.2	91.5	87.0	96.0	89.8	78.2	84.5	84.1	91.9
Building construction	96.3	109.1	90.6	85.7	86.4	100.6	102.7	97.8	92.9	102.2	95.1	83.0	91.8	89.8	97.8
Civil engineering	80.9	81.7	73.9	68.9	70.6	82.6	86.8	84.4	80.4	89.1	84.0	72.8	76.3	77.7	85.4