

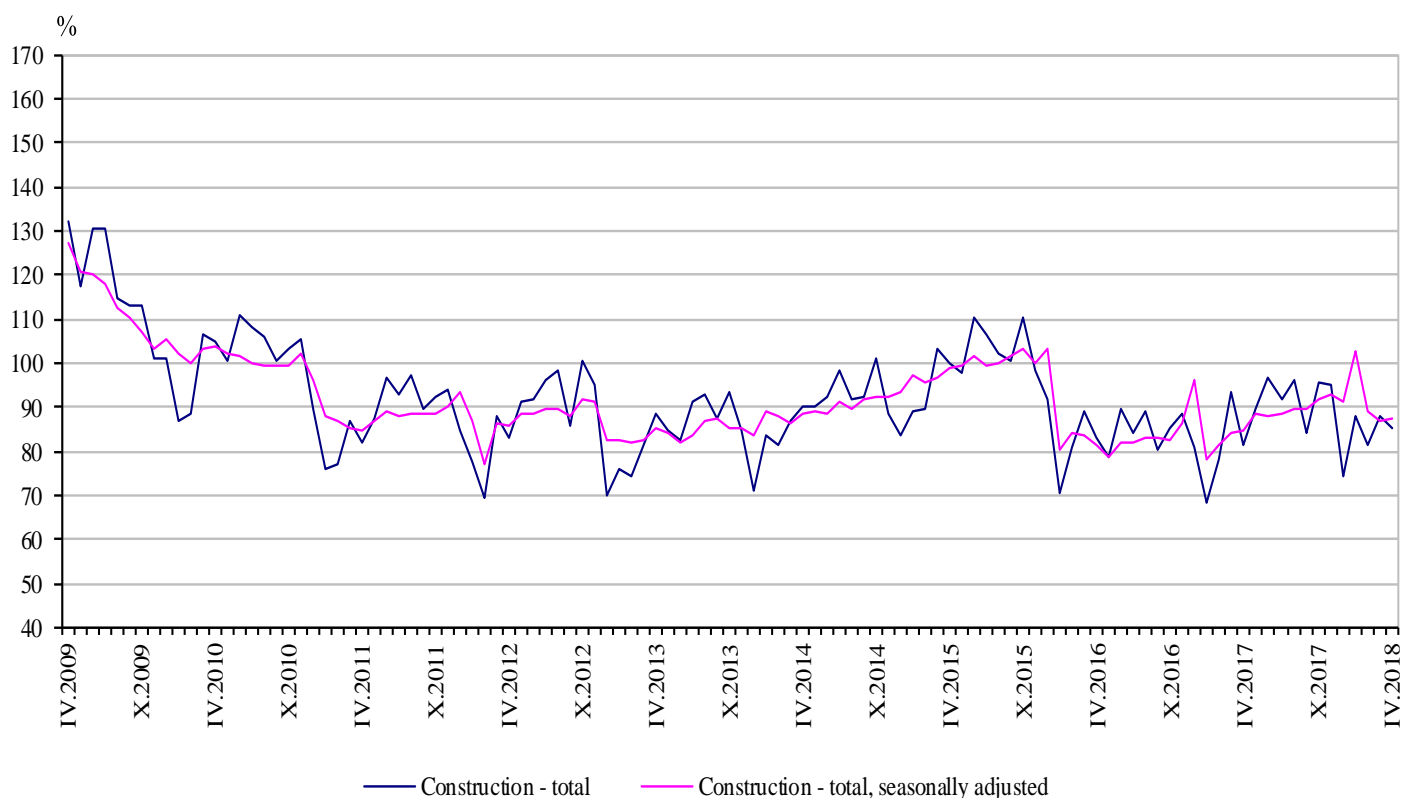


## CONSTRUCTION PRODUCTION INDICES IN APRIL 2018<sup>1,2</sup>

According to the preliminary data, in April 2018 the index of production in section 'Construction' calculated on the base of seasonally adjusted data<sup>3</sup> was 0.6% above the level of the previous month (Table 2).

In April 2018 working day adjusted data<sup>4</sup> also showed an increase by 0.6% in the construction production, compared to the April 2017 (Table 4).

**Figure 1. Construction Production Indices (2015 = 100)**



<sup>1</sup> Data for April 2018 are preliminary.

<sup>2</sup> The monthly indices show the short-term changes in the construction production between two comparable periods. This information can be used to analyse the current state of the construction activity in the country, as well as short-term forecast for its future development. The indices are calculated on the base of information on hours worked in the construction. The data are collected with monthly sample survey, which includes construction enterprises, which production exceeds 75% of the total production in construction. Construction Production Indices are calculated on the base 2015 = 100.

<sup>3</sup> Seasonal adjustment is a statistical method which eliminates the seasonal component of time series.

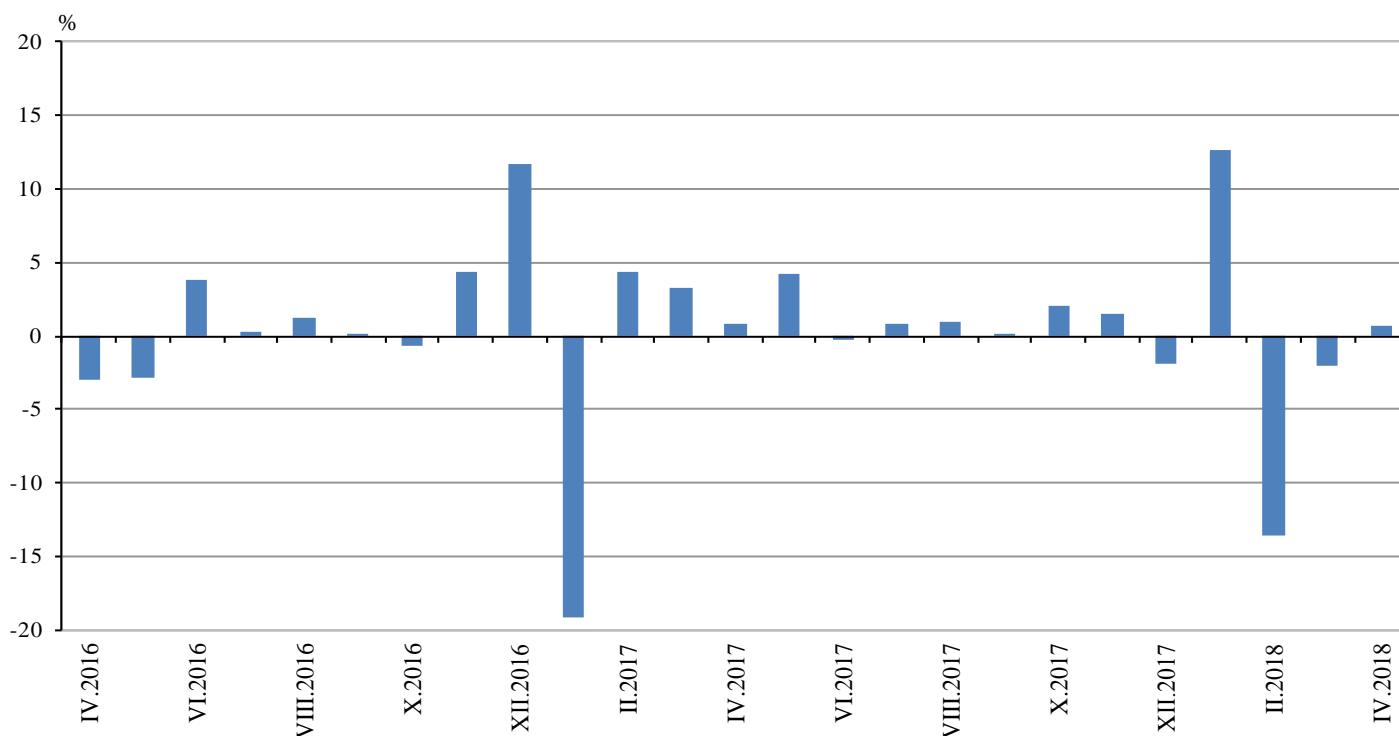
<sup>4</sup> Working day adjustment is an adjustment for variations in monthly data, caused by calendar effects, different number of calendar and working days in the months, national holidays and outliers (for example the presence of more non-working days in May could contribute to the decline in the production in some activities).



## Monthly changes

In April 2018 the construction production, calculated from the seasonally adjusted data, was above the level of the previous month. Index the production of civil engineering rose by 1.1% and production of building construction - by 0.3% (Table 2).

**Figure 2. Changes of the Construction Production Indices compared to the previous month  
(Seasonally adjusted, 2015 = 100)**



### 1. Construction Production Indices (Seasonally adjusted, 2015 = 100)

	2017										2018			
	IV	V	VI	VII	VIII	IX	X	XI	XII	I	II	III	IV	
Construction - total	84.7	88.3	88.1	88.8	89.7	89.7	91.6	93.0	91.3	102.8	88.8	87.0	87.6	
Building construction	89.2	92.5	92.2	94.1	95.2	96.1	97.4	98.9	101.2	116.7	96.9	94.3	94.5	
Civil engineering	79.7	83.7	83.5	82.7	83.5	82.6	85.2	86.4	80.2	87.2	79.9	79.0	79.9	



## 2. Changes of the Construction Production Indices compared to the previous month<sup>1</sup>

(Per cent)

	2017										2018			
	IV	V	VI	VII	VIII	IX	X	XI	XII	I	II	III	IV	
Construction - total	0.9	4.2	-0.3	0.8	1.0	0.1	2.1	1.5	-1.8	12.6	-13.6	-2.0	0.6	
Building construction	1.8	3.7	-0.3	2.2	1.2	0.9	1.3	1.6	2.3	15.3	-17.0	-2.7	0.3	
Civil engineering	-0.2	5.0	-0.2	-0.9	0.9	-1.0	3.1	1.5	-7.2	8.7	-8.5	-1.1	1.1	

<sup>1</sup> Seasonally adjusted.

### Annual changes

On an annual basis in April 2018, the increase of production in construction, calculated from working day adjusted data, was determined from the positive rate in the building construction, where the growth was by 2.2%, while in the civil engineering was registered a decline by 1.4% (Table 4).

## 3. Construction Production Indices (Working day adjusted, 2015 = 100)

	2015	2016	2017										2018			
	IV	IV	IV	V	VI	VII	VIII	IX	X	XI	XII	I	II	III	IV	
Construction - total	99.8	81.4	84.8	89.8	95.5	93.8	94.6	85.8	95.7	94.2	75.6	87.1	81.6	89.7	85.3	
Building construction	100.4	80.9	89.7	95.1	100.8	100.9	101.5	92.0	101.9	99.7	81.5	95.0	89.5	97.2	91.7	
Civil engineering	99.2	82.0	79.3	83.8	89.5	85.9	86.9	78.8	88.9	88.0	69.0	78.4	72.7	81.4	78.2	



#### 4. Changes of the Construction Production Indices compared to the same month of the previous year<sup>1</sup>

(Per cent)

	2015	2016	2017									2018			
	IV	IV	IV	V	VI	VII	VIII	IX	X	XI	XII	I	II	III	IV
<b>Construction - total</b>	11.1	-18.5	4.1	13.9	7.8	8.9	8.3	6.9	9.8	7.6	-7.4	25.8	4.2	-2.0	0.6
Building construction	8.9	-19.5	10.9	21.2	14.2	17.3	16.0	13.2	15.2	12.1	-3.1	34.0	8.0	0.9	2.2
Civil engineering	13.7	-17.3	-3.3	5.8	0.7	-0.5	-0.3	-0.5	3.8	2.4	-12.5	16.2	-0.7	-5.5	-1.4

<sup>1</sup> Working day adjusted.