

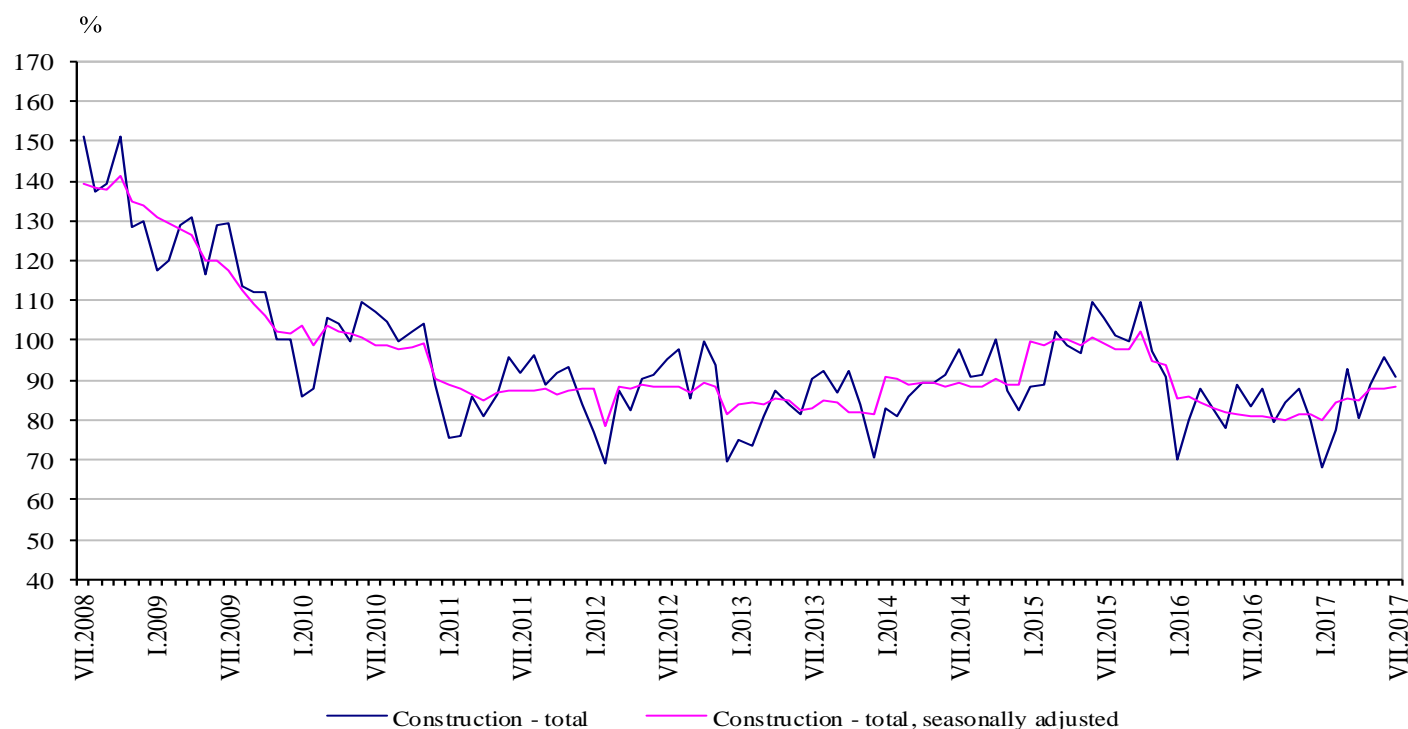


## CONSTRUCTION PRODUCTION INDICES IN JULY 2017<sup>1,2</sup>

According to the preliminary data, in July 2017 the index of production in section ‘Construction’ calculated on the base of seasonally adjusted data<sup>3</sup> was 0.6% above the level of the previous month (Table 2).

In July 2017 working day adjusted data<sup>4</sup> showed an increase by 7.9% in the construction production, compared to the same month of 2016 (Table 4).

**Figure 1. Construction Production Indices (2010 = 100)**



<sup>1</sup> Data for July 2017 are preliminary.

<sup>2</sup> The monthly indices show the short-term changes in the construction production between two comparable periods. This information can be used to analyse the current state of the construction activity in the country, as well as short-term forecast for its future development. The indices are calculated on the base of information on hours worked in the construction. The data are collected with monthly sample survey, which includes construction enterprises, which production exceeds 75% of the total production in construction. Construction Production Indices are calculated on the base 2010 = 100.

<sup>3</sup> Seasonal adjustment is a statistical method which eliminates the seasonal component of time series.

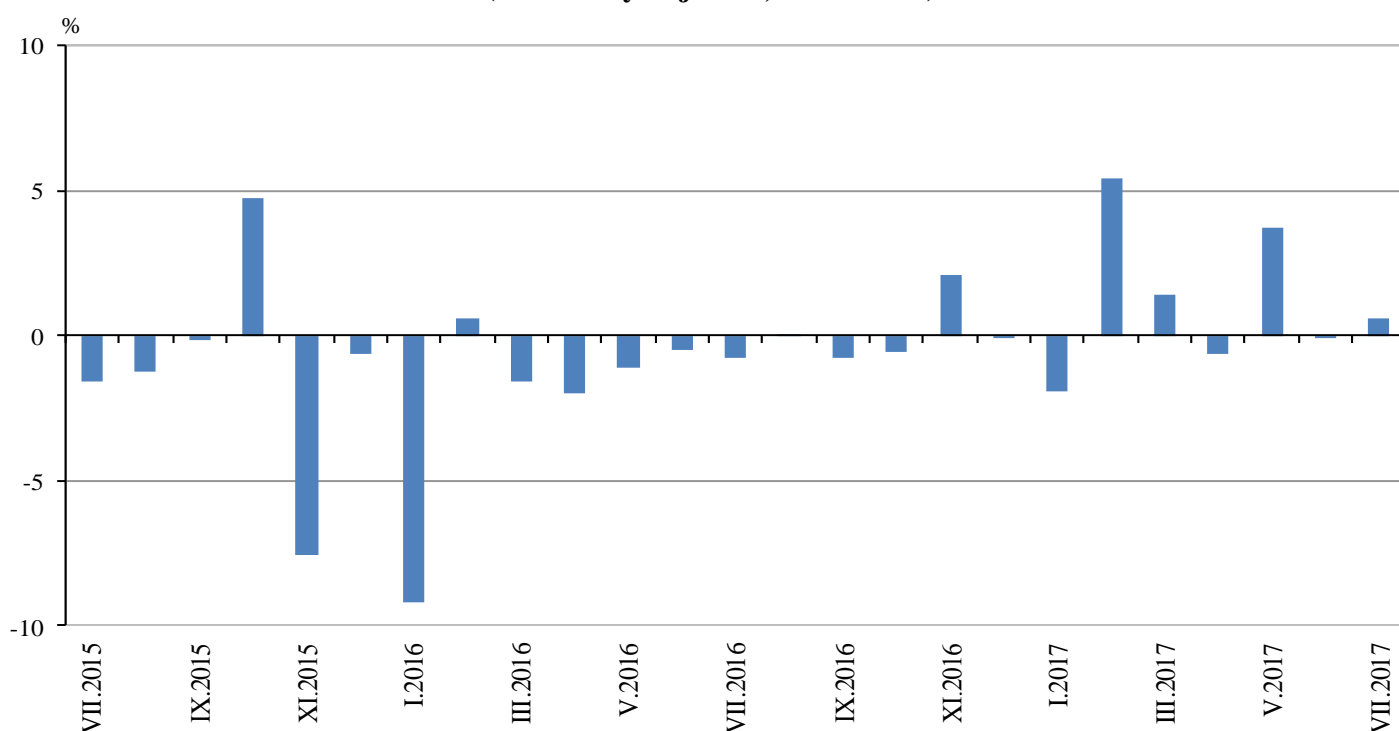
<sup>4</sup> Working day adjustment is an adjustment for variations in monthly data, caused by calendar effects, different number of calendar and working days in the months, national holidays and outliers (for example the presence of more non-working days in May could contribute to the decline in the production in some activities).



## Monthly changes

In July 2017 the construction production, calculated from the seasonally adjusted data, was above the level of the previous month. Index of production of building construction rose by 1.5%, while the production of civil engineering fell by 0.7% (Table 2).

**Figure 2. Changes of the Construction Production Indices compared to the previous month  
(Seasonally adjusted, 2010 = 100)**



## 1. Construction Production Indices (Seasonally adjusted, 2010 = 100)

	2016						2017						
	VII	VIII	IX	X	XI	XII	I	II	III	IV	V	VI	VII
Construction - total	81.0	81.0	80.4	80.0	81.7	81.6	80.0	84.3	85.5	85.0	88.1	88.0	88.5
Building construction	77.3	78.0	79.0	79.2	80.3	81.0	77.8	85.3	86.1	85.1	88.7	89.4	90.7
Civil engineering	85.7	84.8	82.2	81.0	83.4	82.3	82.7	83.2	84.8	84.8	87.4	86.4	85.8



## 2. Changes of the Construction Production Indices compared to the previous month<sup>1</sup>

(Per cent)

	2016						2017						
	VII	VIII	IX	X	XI	XII	I	II	III	IV	V	VI	VII
<b>Construction - total</b>	-0.7	0.0	-0.7	-0.5	2.1	-0.1	-1.9	5.4	1.4	-0.6	3.7	-0.1	0.6
Building construction	1.3	1.0	1.3	0.3	1.4	0.9	-4.0	9.6	1.0	-1.2	4.2	0.8	1.5
Civil engineering	-3.0	-1.1	-3.0	-1.5	3.0	-1.3	0.5	0.6	1.9	0.0	3.0	-1.1	-0.7

<sup>1</sup> Seasonally adjusted.

### Annual changes

On an annual basis in July 2017, the increase of production in construction, calculated from working day adjusted data, was determined from the positive rate in the building construction, where the growth was by 15.9%, but in the civil engineering was registered a decrease by 0.9% (Table 4).

### 3. Construction Production Indices (Working day adjusted, 2010 = 100)

	2014	2015	2016						2017						
	VII	VII	VII	VIII	IX	X	XI	XII	I	II	III	IV	V	VI	VII
<b>Construction - total</b>	95.5	104.7	86.0	86.2	80.4	86.2	86.6	78.7	66.7	78.0	91.4	83.7	88.2	94.7	92.8
Building construction	92.1	99.0	81.8	82.3	77.4	83.3	83.9	77.1	64.8	78.9	91.8	84.4	89.1	95.4	94.7
Civil engineering	99.8	111.8	91.2	91.0	84.2	89.8	89.9	80.6	69.2	76.8	91.0	82.9	87.2	93.8	90.4



#### 4. Changes of the Construction Production Indices compared to the same month of the previous year<sup>1</sup>

(Per cent)

	2014	2015	2016						2017						
	VII	VII	VII	VIII	IX	X	XI	XII	I	II	III	IV	V	VI	VII
<b>Construction - total</b>	7.7	9.6	-17.9	-16.3	-17.8	-21.6	-11.7	-10.9	-8.0	-0.1	5.3	2.1	11.9	8.1	7.9
Building construction	0.5	7.5	-17.4	-15.1	-13.2	-22.4	-9.3	-5.1	-5.3	9.5	11.9	8.7	19.2	14.9	15.9
Civil engineering	17.4	12.0	-18.4	-17.6	-22.5	-20.7	-14.4	-16.9	-11.0	-10.2	-2.1	-5.1	3.8	0.5	-0.9

<sup>1</sup> Working day adjusted.