

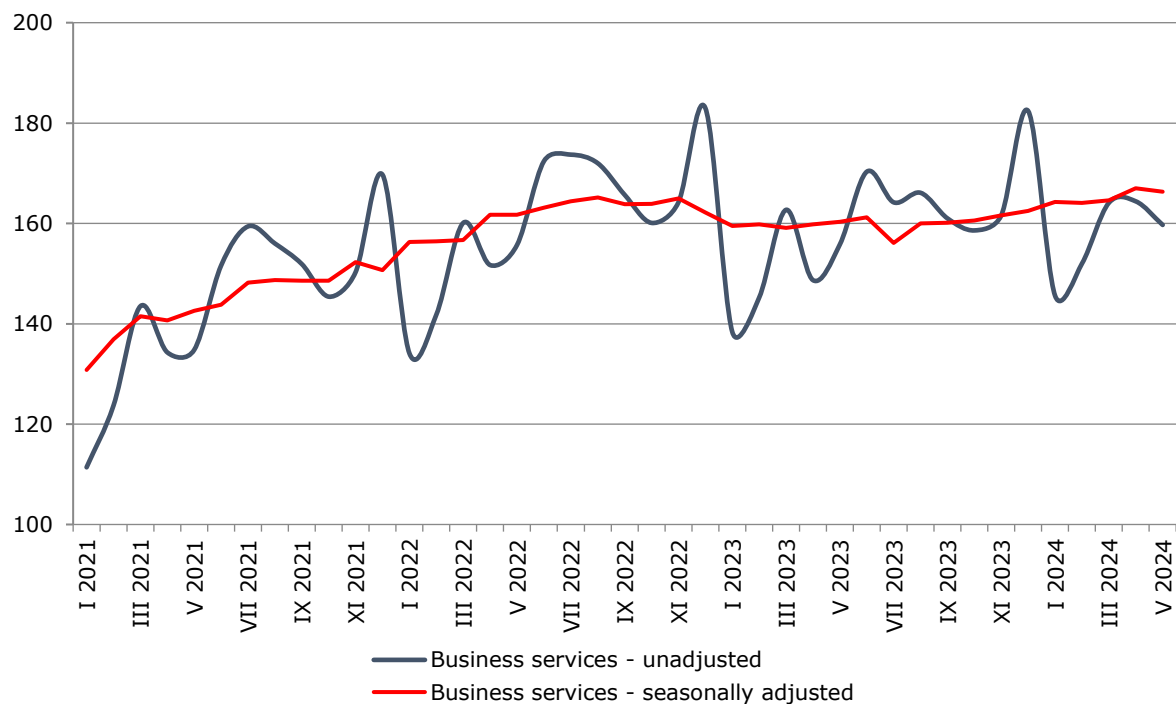


SERVICES PRODUCTION INDICES IN MAY 2024

The total production index in **Services of the business economy**¹ decreased by 0.4% in May 2024 compared to the previous month. The data are preliminary and seasonally adjusted.

Compared to May 2023, an increase of 3.5% was registered in the calendar-adjusted index according to preliminary data.

Figure 1. Production indices for Business services (2015=100)

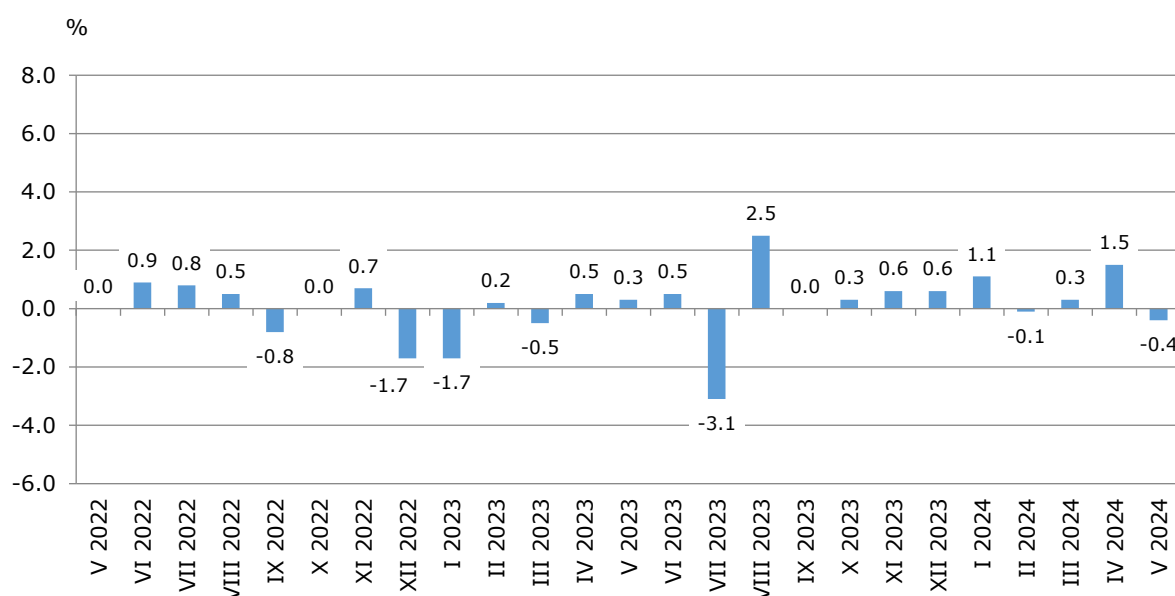


¹ Business services include the following sectors from NACE.BG – 2008: H - Transportation and storage, I - Accommodation and food service activities, J - Information and communication, L - Real estate activities, M_STG - Professional, scientific and technical activities (specific grouping under Regulation (EU) 2019/2152) and N - Administrative and support service activities.

Monthly changes

An increase, compared to the previous month, was registered in sectors: 'Information and communication' - by 1.9%, and 'Professional, scientific and technical activities' - by 0.2%. A decline was seen in sectors: 'Real estate activities' - by 3.2%, 'Transportation and storage' - by 2.9%, 'Administrative and support service activities' - by 1.4% and 'Accommodation and food service activities' - by 0.6%.

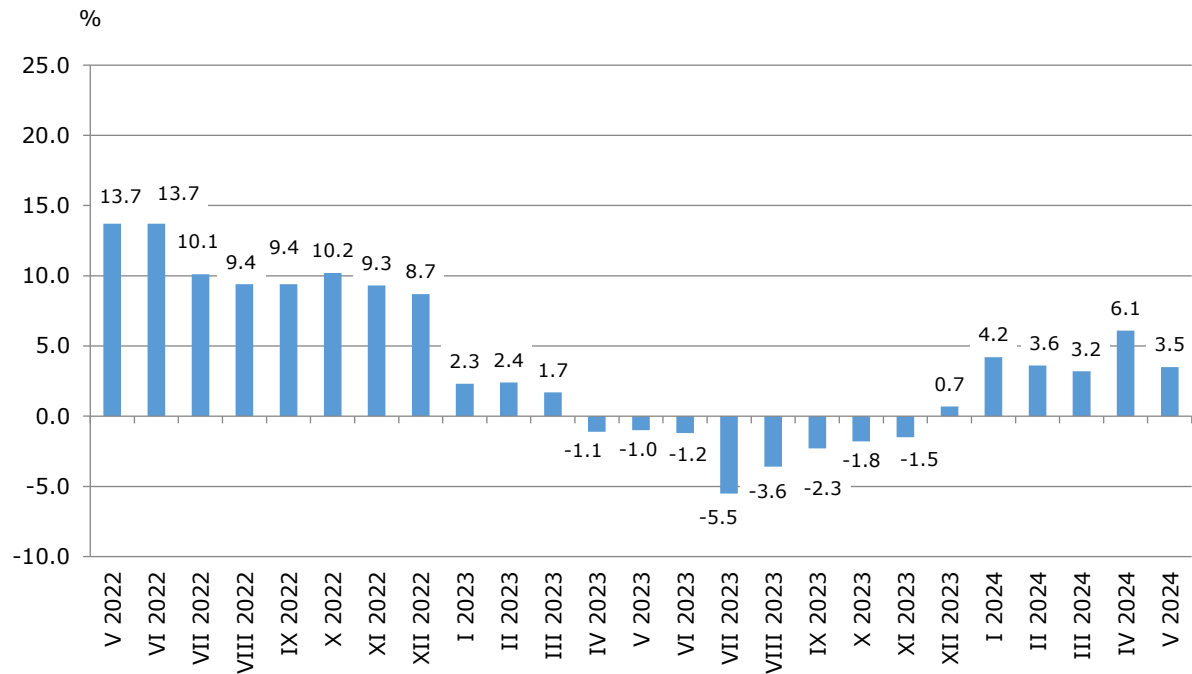
Figure 2. Changes of production indices for Business services compared to the previous month (Seasonally adjusted data)



Annual changes

On an annual basis, a rise was observed in the following sectors: 'Information and communication' - by 14.1% 'Accommodation and food service activities' - by 11.4%, 'Transportation and storage' - by 2.3%. A decrease was reported in sectors: 'Professional, scientific and technical activities' - by 10.9%, 'Administrative and support service activities' and 'Real estate activities' - both by 5.6%.

Figure 3. Changes of production indices for Business services compared to the same month of the previous year (Calendar-adjusted data)



Methodological notes

Monthly indices of production in services are calculated and published two months after the reference period (M+2) in accordance with the requirements of Regulation (EU) 2019/2152 of the European Parliament and of the Council for European Business Statistics. Production indices in services are calculated by deflating the turnover indices for each activity with the corresponding producer price indices. The purpose of the production index is to measure changes in output volume at monthly intervals. The indices are calculated with 2015 as a base year.

Seasonal adjustment is a statistical method, which eliminates the seasonal component of time series.

Calendar adjustment is an adjustment for variations caused by calendar effects, a different number of calendar and working days in the months, national holidays and outliers (for example, the presence of more non-working days in May could contribute to the decline in some activities).

SERVICES PRODUCTION INDICES IN MAY 2024

Annex

Table 1

Changes of production indices in services¹ (Compared to the previous month)

(Per cent)

Economic activities	NACE.BG - 2008	2023	2024*				
		XII	I	II	III	IV	V
Services of the business economy (except trade and financial and insurance activities)	HTNXK	0.6	1.1	-0.1	0.3	1.5	-0.4
Transportation and storage	H	1.8	0.8	0.2	2.3	2.0	-2.9
Land transport and transport via pipelines	H49	3.6	-1.6	2.4	1.8	1.4	-3.0
Water transport	H50	9.0	-8.8	7.3	2.6	-0.5	-8.4
Air transport	H51	-1.4	6.8	4.7	4.6	22.3	5.5
Warehousing and support activities for transportation	H52	-0.4	3.2	-4.0	4.8	-1.2	-2.5
Postal and courier activities	H53	-1.5	7.5	-1.5	-2.8	10.6	-6.7
Accommodation and food service activities	I	2.3	0.3	1.5	0.7	0.6	-0.6
Accommodation	I55	4.6	-0.7	0.2	1.3	1.4	-0.6
Food and beverage service activities	I56	0.4	-4.1	4.4	0.5	-1.5	0.5
Information and communication	J	2.6	2.9	0.2	0.6	2.0	1.9
Publishing activities	J58	3.4	-12.5	7.7	-3.9	-0.1	4.8
Motion picture, video, television programme production; programming and broadcasting activities	J59	38.0	-20.8	16.3	8.4	-7.5	-2.2
Programming and broadcasting activities	J60	1.3	1.0	-1.0	-42.8	86.7	-8.2
Telecommunications	J61	-1.5	4.7	5.2	-1.3	-0.3	3.8
Computer programming, consultancy and related activities	J62	6.7	2.9	-3.1	4.2	1.2	1.2
Information service activities	J63	-11.4	4.6	2.8	-10.2	12.4	0.5
Real estate activities	L	-6.2	-3.3	2.7	-1.7	3.1	-3.2
Professional, scientific and technical activities (specific grouping under Regulation (EU) 2019/2152)	M_STS	2.8	-4.5	0.1	-0.8	-0.2	0.2
Legal and accounting activities	M69	-0.5	1.1	2.2	-5.4	-3.2	14.3
Management consultancy activities	M702	-1.8	8.4	-2.3	-8.6	1.6	-1.1
Architectural and engineering activities; technical testing and analysis	M71	10.5	-16.0	0.3	5.1	1.7	-4.5
Advertising and market research	M73	6.9	-11.9	-1.8	-3.1	9.3	-10.6
Other professional, scientific and technical activities	M74	0.5	-4.1	1.3	7.6	-5.9	-1.0
Administrative and support service activities	N	-7.9	7.0	-5.0	-3.0	0.6	-1.4
Rental and leasing activities	N77	-15.3	13.9	-22.6	-2.0	8.1	-15.7
Employment activities	N78	-7.1	7.7	-0.6	0.9	-17.0	22.1
Travel agency, tour operator reservation service and related activities	N79	-3.9	9.3	1.3	0.7	5.7	4.0
Security and investigation activities	N80	-0.8	1.3	11.9	-10.5	1.3	1.3
Services to buildings and landscape activities	N81	-8.3	12.9	-1.6	3.6	-1.4	-10.3
Office administrative, office support and other business support activities	N82	-6.5	3.2	-3.4	-1.7	0.6	2.9

¹ Seasonally adjusted data.

* Preliminary data.

SERVICES PRODUCTION INDICES IN MAY 2024

Table 2

Changes of production indices in services¹ (Compared to the same month of the previous year)

(Per cent)

Economic activities	NACE.BG - 2008	2023	2024*				
		XII	I	II	III	IV	V
Services of the business economy (except trade and financial and insurance activities)	HTNXK	0.7	4.2	3.6	3.2	6.1	3.5
Transportation and storage	H	-1.6	1.6	2.5	2.3	12.6	2.3
Land transport and transport via pipelines	H49	0.3	-1.0	1.8	1.6	6.0	1.3
Water transport	H50	2.9	1.3	29.5	27.2	29.6	8.4
Air transport	H51	-18.4	-14.1	-4.9	-17.7	2.7	33.2
Warehousing and support activities for transportation	H52	-6.0	2.6	0.1	4.8	22.8	-0.5
Postal and courier activities	H53	5.5	17.3	14.9	2.2	25.2	7.8
Accommodation and food service activities	I	8.3	8.4	9.3	9.4	14.3	11.4
Accommodation	I55	12.0	20.2	15.1	16.9	24.5	23.5
Food and beverage service activities	I56	5.0	-2.3	3.1	2.3	2.3	3.0
Information and communication	J	1.1	6.1	6.2	8.2	11.5	14.1
Publishing activities	J58	13.1	-7.1	9.7	1.7	-17.5	2.6
Motion picture, video, television programme production; programming and broadcasting activities	J59	-2.2	-4.6	2.3	7.5	-8.5	-8.9
Programming and broadcasting activities	J60	0.6	0.6	-4.9	-46.0	10.4	-6.8
Telecommunications	J61	-1.0	8.3	12.7	15.0	13.5	13.6
Computer programming, consultancy and related activities	J62	3.3	4.3	4.1	8.6	13.7	17.3
Information service activities	J63	-9.0	15.7	0.0	-4.6	2.2	5.2
Real estate activities	L	-0.2	-3.2	1.7	-5.6	1.6	-5.6
Professional, scientific and technical activities (specific grouping under Regulation (EU) 2019/2152)	M_STS	0.9	1.3	0.0	-1.4	-5.2	-10.9
Legal and accounting activities	M69	-1.2	0.1	4.8	7.2	-0.3	17.8
Management consultancy activities	M702	-1.7	34.9	19.7	-15.6	-5.9	-7.7
Architectural and engineering activities; technical testing and analysis	M71	7.6	-7.9	-14.9	4.6	-22.0	-31.5
Advertising and market research	M73	17.6	6.6	2.7	-1.9	5.0	-6.0
Other professional, scientific and technical activities	M74	-10.8	-14.3	-7.6	-1.8	2.1	-19.8
Administrative and support service activities	N	-1.3	8.8	-0.5	-4.5	-10.0	-5.6
Rental and leasing activities	N77	58.9	29.1	-13.1	-11.8	-28.4	-30.7
Employment activities	N78	-10.4	1.7	-1.0	-2.4	-24.2	1.8
Travel agency, tour operator reservation service and related activities	N79	-29.0	19.0	17.6	13.2	23.6	24.3
Security and investigation activities	N80	-1.0	1.1	13.1	3.4	6.5	7.7
Services to buildings and landscape activities	N81	-12.4	4.0	1.1	3.0	6.9	-10.3
Office administrative, office support and other business support activities	N82	-22.3	3.6	-2.6	-8.8	-3.4	6.1

¹ Calendar-adjusted data.

* Preliminary data.

SERVICES PRODUCTION INDICES IN MAY 2024

Table 3

**Production indices in services - seasonally adjusted
(2015=100)**

NACE.BG - 2008	2023								2024*				
	V	VI	VII	VIII	IX	X	XI	XII	I	II	III	IV	V
HTNXK	160.3	161.2	156.1	160.0	160.1	160.6	161.6	162.5	164.3	164.1	164.6	167.0	166.3
H	138.5	136.2	133.8	136.0	137.1	141.3	136.2	138.7	139.8	140.0	143.3	146.2	142.0
H49	130.9	128.6	128.6	129.7	131.0	132.5	127.0	131.6	129.5	132.7	135.0	136.9	132.9
H50	104.5	114.4	104.8	111.7	108.8	116.0	113.9	124.2	113.2	121.5	124.7	124.1	113.7
H51	145.8	152.7	131.8	135.5	139.6	165.6	125.9	124.2	132.6	138.8	145.2	177.5	187.2
H52	145.2	140.1	135.9	139.0	140.1	147.2	145.5	144.9	149.4	143.5	150.4	148.6	144.9
H53	180.6	183.9	177.8	185.1	183.5	188.9	187.4	184.5	198.3	195.3	190.0	210.1	196.1
I	140.1	146.6	138.5	135.9	145.9	147.8	148.5	152.0	152.4	154.7	155.8	156.7	155.7
I55	135.9	146.3	131.6	128.0	143.4	144.2	145.3	152.1	151.0	151.3	153.3	155.4	154.4
I56	144.9	147.0	145.7	144.9	148.0	152.8	152.6	153.3	147.0	153.4	154.2	151.9	152.7
J	195.5	211.1	193.3	199.0	203.4	199.7	200.5	205.7	211.7	212.2	213.5	217.8	221.8
J58	113.7	115.3	117.9	109.8	114.2	100.5	116.6	120.6	105.5	113.7	109.3	109.2	114.4
J59	81.6	77.1	70.6	86.6	63.8	90.6	59.5	82.1	65.0	75.6	82.0	75.8	74.2
J60	86.9	87.6	78.9	87.0	85.8	83.7	82.6	83.7	84.5	83.7	47.9	89.4	82.1
J61	171.0	182.0	166.0	174.8	170.8	169.5	173.8	171.2	179.2	188.6	186.0	185.5	192.6
J62	224.2	251.8	224.1	230.3	244.9	235.2	230.7	246.1	253.2	245.2	255.5	258.6	261.7
J63	247.1	225.8	246.4	236.7	226.2	242.7	268.7	237.9	248.8	255.8	229.8	258.2	259.4
L	134.9	128.9	126.6	128.7	128.5	126.8	140.2	131.5	127.1	130.5	128.3	132.2	128.0
M_STS	156.1	139.2	148.0	155.6	144.0	142.3	144.9	149.0	142.3	142.4	141.3	141.1	141.3
M69	136.9	121.8	140.1	136.0	144.6	139.4	148.5	147.8	149.3	152.6	144.4	139.8	159.8
M702	163.7	159.4	165.8	134.4	139.3	139.6	156.0	153.2	166.0	162.1	148.1	150.6	148.9
M71	148.9	130.5	134.3	128.4	129.6	124.1	117.4	129.7	109.0	109.3	114.9	116.9	111.6
M73	135.6	133.7	140.5	135.5	147.3	152.3	147.3	157.5	138.8	136.2	132.0	144.2	128.9
M74	195.3	156.0	164.0	244.3	162.7	162.8	163.3	164.1	157.4	159.5	171.6	161.6	159.9
N	173.3	171.1	172.1	178.0	172.2	178.0	183.4	168.8	180.7	171.7	166.5	167.5	165.1
N77	288.1	234.4	260.2	282.4	257.6	299.5	310.6	263.1	299.5	231.7	227.1	245.4	206.8
N78	125.8	128.1	120.2	118.8	123.4	123.3	125.3	116.4	125.4	124.6	125.7	104.3	127.4
N79	103.6	132.6	124.6	124.7	142.1	113.1	103.8	99.8	109.1	110.5	111.2	117.5	122.2
N80	113.8	119.5	118.9	125.9	111.8	114.3	118.3	117.3	118.8	133.0	119.1	120.6	122.2
N81	182.3	182.2	176.1	171.1	173.4	177.6	177.9	163.2	184.3	181.4	187.9	185.2	166.2
N82	219.8	230.8	227.1	230.0	232.7	231.9	243.7	227.9	235.1	227.1	223.2	224.5	231.0

* Preliminary data.

SERVICES PRODUCTION INDICES IN MAY 2024

Table 4

**Production indices in services - calendar-adjusted
(2015=100)**

NACE.BG - 2008	2023								2024*				
	V	VI	VII	VIII	IX	X	XI	XII	I	II	III	IV	V
HTNXK	155.0	169.5	165.8	164.8	162.1	158.9	160.8	185.8	144.7	150.9	166.1	161.2	160.4
H	138.4	142.4	145.5	135.0	138.0	147.6	139.7	137.3	121.7	130.8	148.1	148.6	141.6
H49	130.7	131.7	139.4	121.7	129.7	141.4	133.1	130.7	110.9	126.3	145.0	136.3	132.4
H50	105.5	122.5	123.5	117.6	114.5	127.9	112.6	138.0	90.0	98.4	120.3	122.6	114.4
H51	138.1	193.4	227.6	237.3	194.7	147.1	73.6	80.2	75.1	78.7	93.9	137.0	183.9
H52	146.9	149.7	145.4	144.1	142.6	152.2	146.0	140.6	133.4	133.1	150.0	162.5	146.1
H53	176.8	187.3	168.3	172.5	172.6	187.3	205.9	207.9	194.6	190.0	197.8	209.6	190.6
I	130.6	161.7	206.4	232.5	164.0	123.6	110.4	131.5	121.6	128.8	135.6	135.2	145.5
I55	115.1	163.2	223.3	262.6	168.2	107.4	96.4	120.3	118.6	128.5	130.6	132.0	142.1
I56	148.8	159.9	186.5	197.2	159.2	142.5	126.8	144.6	125.1	129.1	141.4	135.7	153.3
J	186.6	219.6	187.6	186.0	200.8	201.7	206.7	259.6	191.8	194.5	223.7	207.6	212.8
J58	101.2	123.0	139.6	106.8	143.8	106.8	121.9	140.5	90.1	91.8	92.3	97.2	103.9
J59	72.3	76.6	62.7	72.2	53.4	103.9	68.2	154.8	46.1	61.4	78.8	69.8	65.8
J60	90.4	99.5	63.5	63.8	84.3	99.6	114.4	82.6	57.8	69.7	64.1	89.2	84.2
J61	168.5	185.1	168.6	178.4	175.5	168.8	173.7	190.2	173.8	175.3	183.7	177.9	191.3
J62	211.1	265.8	212.7	206.9	236.5	238.7	233.5	329.4	223.9	223.4	277.3	244.9	247.5
J63	233.0	226.8	232.1	213.2	215.8	235.1	317.2	290.9	223.5	244.2	238.8	253.7	245.2
L	123.9	130.2	129.2	130.7	137.7	119.3	143.7	156.5	117.9	124.9	125.1	126.9	116.9
M_STS	151.8	149.2	146.4	140.2	140.1	139.9	142.5	200.3	122.5	133.6	144.0	138.3	135.2
M69	136.1	131.5	142.5	120.0	136.0	133.0	143.3	186.0	129.8	140.8	151.5	148.3	160.4
M702	154.5	182.7	158.6	120.1	152.8	136.2	143.8	197.8	158.6	166.1	140.7	147.4	142.5
M71	141.5	137.7	137.9	122.5	117.8	115.0	112.7	210.6	80.0	95.3	117.7	108.9	96.9
M73	136.5	137.6	134.3	119.9	142.0	164.8	167.5	193.8	108.0	119.7	130.0	144.2	128.3
M74	191.2	162.8	159.8	216.9	159.5	162.3	158.1	210.5	146.3	155.1	181.5	151.3	153.3
N	171.5	180.0	179.0	182.2	175.9	175.0	191.7	176.0	162.5	160.6	161.2	162.8	161.9
N77	301.3	249.3	269.8	288.0	265.4	288.5	338.0	299.6	249.4	197.7	205.9	242.3	208.9
N78	123.0	126.5	120.3	117.8	121.5	125.4	125.5	132.5	110.5	120.3	125.5	108.4	125.2
N79	87.7	162.4	185.2	200.6	192.4	113.0	66.1	76.1	70.6	77.6	86.2	93.5	109.1
N80	110.7	119.6	121.4	128.2	114.4	118.1	117.4	126.4	109.4	130.3	116.3	118.9	119.2
N81	190.9	194.3	191.2	177.8	173.6	180.8	178.0	171.8	156.8	164.6	183.0	183.6	171.2
N82	210.3	246.3	222.3	215.1	224.4	219.2	274.0	214.8	236.4	226.1	229.0	214.1	223.1

* Preliminary data.