

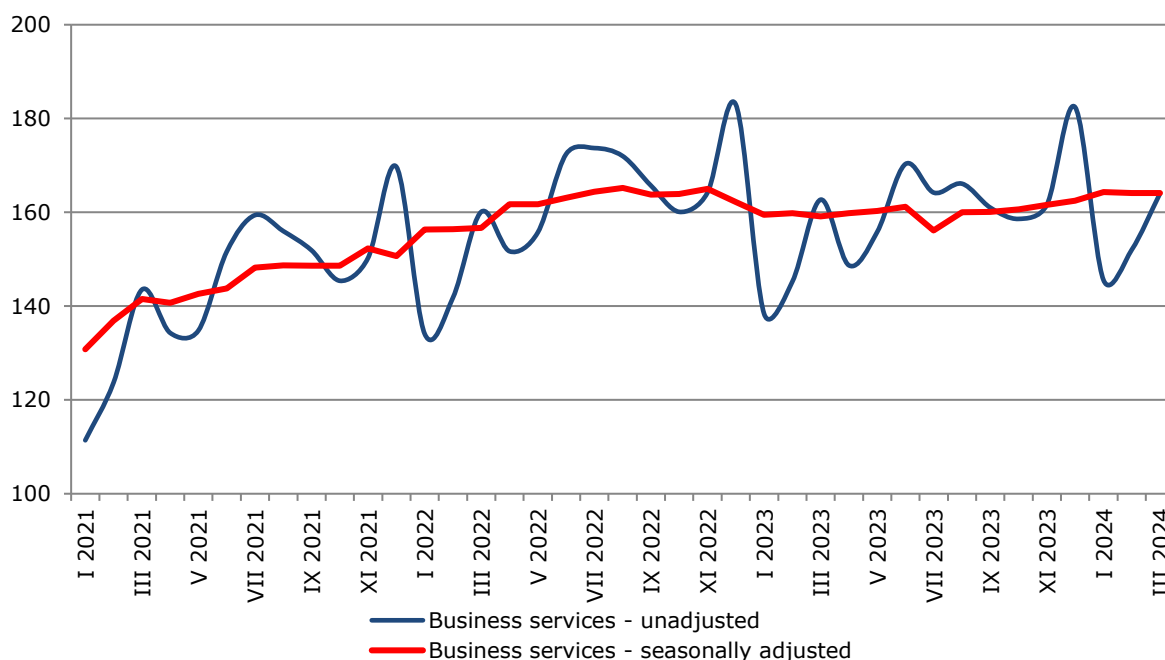


SERVICES PRODUCTION INDICES IN MARCH 2024

The total production index in **Services of the business economy**¹ remained unchanged compared to the previous month. The data are preliminary and seasonally adjusted.

During March 2024, the production index in **Services of the business economy** grew by 3.2% compared to the same month of 2023. The data are preliminary and calendar-adjusted.

Figure 1. Production indices for Business services (2015=100)

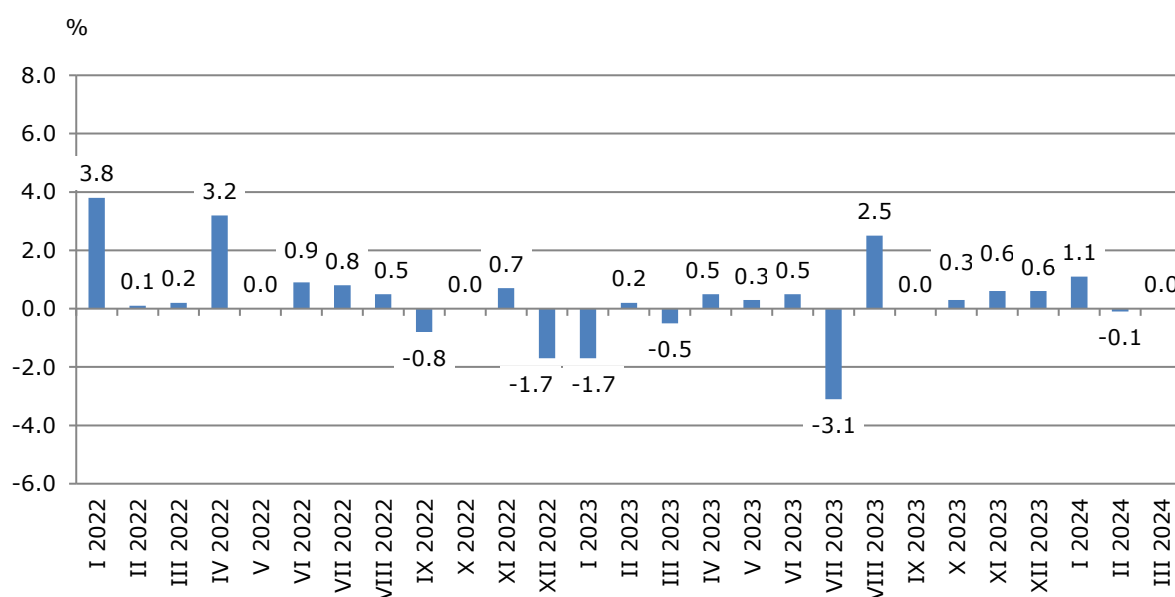


¹ Business services include the following sectors from NACE.BG – 2008: H - Transportation and storage, I - Accommodation and food service activities, J - Information and communication, L - Real estate activities, M_STG - Professional, scientific and technical activities (specific grouping under Regulation (EU) 2019/2152) and N - Administrative and support service activities.

Monthly changes

An increase, compared to the previous month, was registered in the following sectors: 'Professional, scientific and technical activities' - by 1.1%, 'Transportation and storage' - by 0.8%, 'Accommodation and food service activities' - by 0.4% and 'Information and communication' - by 0.2%. A decrease was seen in the sectors 'Real estate activities' - by 2.9% and 'Administrative and support service activities' - by 2.4%.

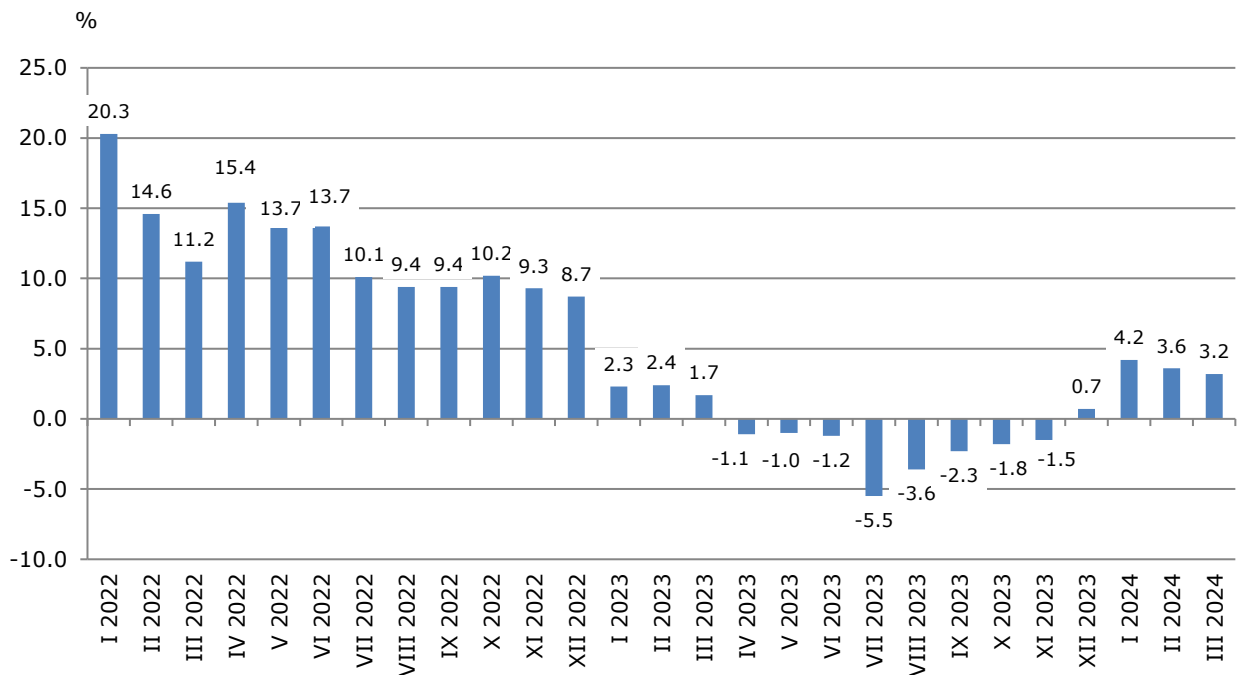
Figure 2. Changes of production indices for Business services compared to the previous month (Seasonally adjusted data)



Annual changes

On an annual basis, a rise was observed in the following sectors: 'Accommodation and food service activities' - by 9.4%, 'Information and communication' - by 7.9%, 'Transportation and storage' - by 2.1%. A decrease was reported in sectors 'Real estate activities' - by 5.7%, 'Administrative and support service activities' - by 4.5% and 'Professional, scientific and technical activities' - by 0.2%.

Figure 3. Changes of production indices for Business services compared to the same month of the previous year (Calendar-adjusted data)



Methodological notes

Monthly indices of production in services are calculated and published two months after the reference period (M+2) in accordance with the requirements of Regulation (EU) 2019/2152 of the European Parliament and of the Council for European Business Statistics. Production indices in services are calculated by deflating the turnover indices for each activity with the corresponding producer price indices. The purpose of the production index is to measure changes in the volume of output at monthly intervals. The indices are calculated with 2015 as a base year.

Seasonal adjustment is a statistical method, which eliminates the seasonal component of time series.

Calendar adjustment is an adjustment for variations caused by calendar effects, a different number of calendar and working days in the months, national holidays and outliers (for example, the presence of more non-working days in May could contribute to the decline in some activities).

SERVICES PRODUCTION INDICES IN MARCH 2024

Annex

Table 1

Changes of production indices in services¹ (Compared to the previous month)

(Per cent)

Economic activities	NACE.BG - 2008	2023			2024		
		X	XI	XII	I	II	III*
Services of the business economy (except trade and financial and insurance activities)	HTNXK	0.3	0.6	0.6	1.1	-0.1	0.0
Transportation and storage	H	3.0	-3.6	1.8	0.8	0.2	0.8
Land transport and transport via pipelines	H49	1.1	-4.1	3.6	-1.6	2.4	1.0
Water transport	H50	6.7	-1.8	9.0	-8.8	7.3	-0.2
Air transport	H51	18.6	-24.0	-1.4	6.8	4.7	2.0
Warehousing and support activities for transportation	H52	5.1	-1.1	-0.4	3.2	-4.0	1.4
Postal and courier activities	H53	3.0	-0.8	-1.5	7.5	-1.5	-3.3
Accommodation and food service activities	I	1.3	0.5	2.3	0.3	1.5	0.4
Accommodation	I55	0.5	0.8	4.6	-0.7	0.2	0.3
Food and beverage service activities	I56	3.3	-0.1	0.4	-4.1	4.4	0.3
Information and communication	J	-1.8	0.4	2.6	2.9	0.2	0.2
Publishing activities	J58	-12.1	16.1	3.4	-12.5	7.7	-4.0
Motion picture, video, television programme production; programming and broadcasting activities	J59	42.0	-34.3	38.0	-20.8	16.3	8.3
Programming and broadcasting activities	J60	-2.4	-1.3	1.3	1.0	-1.0	-41.5
Telecommunications	J61	-0.8	2.5	-1.5	4.7	5.2	-1.3
Computer programming, consultancy and related activities	J62	-4.0	-1.9	6.7	2.9	-3.1	3.5
Information service activities	J63	7.3	10.7	-11.4	4.6	2.8	-10.3
Real estate activities	L	-1.3	10.6	-6.2	-3.3	2.7	-2.9
Professional, scientific and technical activities (specific grouping under Regulation (EU) 2019/2152)	M_STS	-1.2	1.8	2.8	-4.5	0.1	1.1
Legal and accounting activities	M69	-3.6	6.5	-0.5	1.1	2.2	-6.0
Management consultancy activities	M702	0.2	11.8	-1.8	8.4	-2.3	-7.8
Architectural and engineering activities; technical testing and analysis	M71	-4.2	-5.4	10.5	-16.0	0.3	15.6
Advertising and market research	M73	3.4	-3.2	6.9	-11.9	-1.8	-3.2
Other professional, scientific and technical activities	M74	0.1	0.3	0.5	-4.1	1.3	7.0
Administrative and support service activities	N	3.4	3.0	-7.9	7.0	-5.0	-2.4
Rental and leasing activities	N77	16.3	3.7	-15.3	13.9	-22.6	-1.0
Employment activities	N78	-0.1	1.7	-7.1	7.7	-0.6	3.9
Travel agency, tour operator reservation service and related activities	N79	-20.4	-8.2	-3.9	9.3	1.3	-0.6
Security and investigation activities	N80	2.2	3.5	-0.8	1.3	11.9	-10.5
Services to buildings and landscape activities	N81	2.4	0.2	-8.3	12.9	-1.6	3.1
Office administrative, office support and other business support activities	N82	-0.3	5.1	-6.5	3.2	-3.4	-1.0

¹ Seasonally adjusted data.

* Preliminary data.

SERVICES PRODUCTION INDICES IN MARCH 2024

Table 2

Changes of production indices in services¹ (Compared to the same month of the previous year)

(Per cent)

Economic activities	NACE.BG - 2008	2023			2024		
		X	XI	XII	I	II	III*
Services of the business economy (except trade and financial and insurance activities)	HTNXK	-1.8	-1.5	0.7	4.2	3.6	3.2
Transportation and storage	H	2.2	-4.5	-1.6	1.6	2.5	2.1
Land transport and transport via pipelines	H49	4.7	-4.4	0.3	-1.0	1.8	1.2
Water transport	H50	13.3	-2.7	2.9	1.3	29.5	24.1
Air transport	H51	-2.6	-27.6	-18.4	-14.1	-4.9	-17.7
Warehousing and support activities for transportation	H52	-3.8	-6.4	-6.0	2.6	0.1	4.9
Postal and courier activities	H53	9.9	6.5	5.5	17.3	14.9	2.2
Accommodation and food service activities	I	3.7	1.5	8.3	8.4	9.3	9.4
Accommodation	I55	-0.7	-3.0	12.0	20.2	15.1	16.9
Food and beverage service activities	I56	8.0	5.9	5.0	-2.3	3.1	3.2
Information and communication	J	-6.9	-5.1	1.1	6.1	6.2	7.9
Publishing activities	J58	-17.6	11.9	13.1	-7.1	9.7	1.7
Motion picture, video, television programme production; programming and broadcasting activities	J59	32.6	-40.1	-2.2	-4.6	2.3	7.5
Programming and broadcasting activities	J60	-0.4	-4.1	0.6	0.6	-4.9	-46.0
Telecommunications	J61	-4.4	-2.7	-1.0	8.3	12.7	15.0
Computer programming, consultancy and related activities	J62	-8.8	-10.7	3.3	4.3	4.1	8.1
Information service activities	J63	-5.9	28.1	-9.0	15.7	0.0	-4.6
Real estate activities	L	-7.0	0.6	-0.2	-3.2	1.7	-5.7
Professional, scientific and technical activities (specific grouping under Regulation (EU) 2019/2152)	M_STS	-1.8	2.4	0.9	1.3	0.0	-0.2
Legal and accounting activities	M69	-0.8	1.8	-1.2	0.1	4.8	5.9
Management consultancy activities	M702	-15.0	5.4	-1.7	34.9	19.7	-15.6
Architectural and engineering activities; technical testing and analysis	M71	8.2	-3.6	7.6	-7.9	-14.9	13.1
Advertising and market research	M73	16.1	12.4	17.6	6.6	2.7	-1.9
Other professional, scientific and technical activities	M74	-10.3	-0.8	-10.8	-14.3	-7.6	-2.5
Administrative and support service activities	N	5.6	8.5	-1.3	8.8	-0.5	-4.5
Rental and leasing activities	N77	71.1	69.2	58.9	29.1	-13.1	-11.9
Employment activities	N78	-5.7	2.4	-10.4	1.7	-1.0	-0.8
Travel agency, tour operator reservation service and related activities	N79	-19.6	-22.4	-29.0	19.0	17.6	11.9
Security and investigation activities	N80	-3.1	0.5	-1.0	1.1	13.1	3.4
Services to buildings and landscape activities	N81	-0.3	-5.7	-12.4	4.0	1.1	2.5
Office administrative, office support and other business support activities	N82	-11.5	-9.2	-22.3	3.6	-2.6	-8.8

¹ Calendar-adjusted data.

* Preliminary data.

SERVICES PRODUCTION INDICES IN MARCH 2024

Table 3

Production indices in services - seasonally adjusted (2015=100)

NACE.BG - 2008	2023										2024		
	III	IV	V	VI	VII	VIII	IX	X	XI	XII	I	II	III*
HTNXK	159.1	159.8	160.3	161.2	156.1	160.0	160.1	160.6	161.6	162.5	164.3	164.1	164.1
H	140.3	136.5	138.5	136.2	133.8	136.0	137.1	141.3	136.2	138.7	139.8	140.0	141.1
H49	133.3	130.8	130.9	128.6	128.6	129.7	131.0	132.5	127.0	131.6	129.5	132.7	134.0
H50	101.1	100.7	104.5	114.4	104.8	111.7	108.8	116.0	113.9	124.2	113.2	121.5	121.3
H51	174.0	178.6	145.8	152.7	131.8	135.5	139.6	165.6	125.9	124.2	132.6	138.8	141.6
H52	143.5	136.8	145.2	140.1	135.9	139.0	140.1	147.2	145.5	144.9	149.4	143.5	145.4
H53	181.6	174.4	180.6	183.9	177.8	185.1	183.5	188.9	187.4	184.5	198.3	195.3	188.9
I	147.1	143.0	140.1	146.6	138.5	135.9	145.9	147.8	148.5	152.0	152.4	154.7	155.4
I55	143.3	140.3	135.9	146.3	131.6	128.0	143.4	144.2	145.3	152.1	151.0	151.3	151.8
I56	150.8	144.5	144.9	147.0	145.7	144.9	148.0	152.8	152.6	153.3	147.0	153.4	153.9
J	197.2	196.1	195.5	211.1	193.3	199.0	203.4	199.7	200.5	205.7	211.7	212.2	212.7
J58	107.6	132.3	113.7	115.3	117.9	109.8	114.2	100.5	116.6	120.6	105.5	113.7	109.1
J59	77.2	83.2	81.6	77.1	70.6	86.6	63.8	90.6	59.5	82.1	65.0	75.6	81.9
J60	93.1	86.4	86.9	87.6	78.9	87.0	85.8	83.7	82.6	83.7	84.5	83.7	49.0
J61	162.2	163.7	171.0	182.0	166.0	174.8	170.8	169.5	173.8	171.2	179.2	188.6	186.1
J62	235.9	228.2	224.2	251.8	224.1	230.3	244.9	235.2	230.7	246.1	253.2	245.2	253.9
J63	236.9	253.6	247.1	225.8	246.4	236.7	226.2	242.7	268.7	237.9	248.8	255.8	229.4
L	133.0	135.0	134.9	128.9	126.6	128.7	128.5	126.8	140.2	131.5	127.1	130.5	126.7
M_STS	140.7	147.1	156.1	139.2	148.0	155.6	144.0	142.3	144.9	149.0	142.3	142.4	144.0
M69	133.4	138.6	136.9	121.8	140.1	136.0	144.6	139.4	148.5	147.8	149.3	152.6	143.4
M702	152.8	160.0	163.7	159.4	165.8	134.4	139.3	139.6	156.0	153.2	166.0	162.1	149.4
M71	113.9	142.2	148.9	130.5	134.3	128.4	129.6	124.1	117.4	129.7	109.0	109.3	126.3
M73	132.9	137.6	135.6	133.7	140.5	135.5	147.3	152.3	147.3	157.5	138.8	136.2	131.9
M74	177.3	158.5	195.3	156.0	164.0	244.3	162.7	162.8	163.3	164.1	157.4	159.5	170.7
N	170.4	183.9	173.3	171.1	172.1	178.0	172.2	178.0	183.4	168.8	180.7	171.7	167.7
N77	251.3	342.5	288.1	234.4	260.2	282.4	257.6	299.5	310.6	263.1	299.5	231.7	229.4
N78	131.6	133.4	125.8	128.1	120.2	118.8	123.4	123.3	125.3	116.4	125.4	124.6	129.5
N79	104.6	102.6	103.6	132.6	124.6	124.7	142.1	113.1	103.8	99.8	109.1	110.5	109.9
N80	115.3	113.5	113.8	119.5	118.9	125.9	111.8	114.3	118.3	117.3	118.8	133.0	119.0
N81	184.2	175.4	182.3	182.2	176.1	171.1	173.4	177.6	177.9	163.2	184.3	181.4	186.9
N82	227.5	225.2	219.8	230.8	227.1	230.0	232.7	231.9	243.7	227.9	235.1	227.1	224.9

* Preliminary data.

SERVICES PRODUCTION INDICES IN MARCH 2024

Table 4

Production indices in services - calendar-adjusted (2015=100)

NACE.BG - 2008	2023										2024		
	III	IV	V	VI	VII	VIII	IX	X	XI	XII	I	II	III*
HTNXK	161.0	151.9	155.0	169.5	165.8	164.8	162.1	158.9	160.8	185.8	144.7	150.9	166.1
H	144.8	132.0	138.4	142.4	145.5	135.0	138.0	147.6	139.7	137.3	121.7	130.8	147.8
H49	142.7	128.5	130.7	131.7	139.4	121.7	129.7	141.4	133.1	130.7	110.9	126.3	144.4
H50	94.6	94.6	105.5	122.5	123.5	117.6	114.5	127.9	112.6	138.0	90.0	98.4	117.3
H51	114.0	133.4	138.1	193.4	227.6	237.3	194.7	147.1	73.6	80.2	75.1	78.7	93.9
H52	143.1	132.3	146.9	149.7	145.4	144.1	142.6	152.2	146.0	140.6	133.4	133.1	150.1
H53	193.5	167.4	176.8	187.3	168.3	172.5	172.6	187.3	205.9	207.9	194.6	190.0	197.8
I	123.9	118.3	130.6	161.7	206.4	232.5	164.0	123.6	110.4	131.5	121.6	128.8	135.6
I55	111.7	106.0	115.1	163.2	223.3	262.6	168.2	107.4	96.4	120.3	118.6	128.5	130.6
I56	138.2	132.7	148.8	159.9	186.5	197.2	159.2	142.5	126.8	144.6	125.1	129.1	142.7
J	206.7	186.2	186.6	219.6	187.6	186.0	200.8	201.7	206.7	259.6	191.8	194.5	223.0
J58	90.8	117.8	101.2	123.0	139.6	106.8	143.8	106.8	121.9	140.5	90.1	91.8	92.3
J59	73.3	76.3	72.3	76.6	62.7	72.2	53.4	103.9	68.2	154.8	46.1	61.4	78.8
J60	118.7	80.8	90.4	99.5	63.5	63.8	84.3	99.6	114.4	82.6	57.8	69.7	64.1
J61	159.8	156.8	168.5	185.1	168.6	178.4	175.5	168.8	173.7	190.2	173.8	175.3	183.7
J62	255.3	215.4	211.1	265.8	212.7	206.9	236.5	238.7	233.5	329.4	223.9	223.4	275.9
J63	250.4	248.3	233.0	226.8	232.1	213.2	215.8	235.1	317.2	290.9	223.5	244.2	238.8
L	132.5	125.0	123.9	130.2	129.2	130.7	137.7	119.3	143.7	156.5	117.9	124.9	125.0
M_STS	146.0	146.0	151.8	149.2	146.4	140.2	140.1	139.9	142.5	200.3	122.5	133.6	145.7
M69	141.3	148.7	136.1	131.5	142.5	120.0	136.0	133.0	143.3	186.0	129.8	140.8	149.7
M702	166.8	156.6	154.5	182.7	158.6	120.1	152.8	136.2	143.8	197.8	158.6	166.1	140.7
M71	112.6	139.7	141.5	137.7	137.9	122.5	117.8	115.0	112.7	210.6	80.0	95.3	127.3
M73	132.6	137.3	136.5	137.6	134.3	119.9	142.0	164.8	167.5	193.8	108.0	119.7	130.0
M74	184.7	148.1	191.2	162.8	159.8	216.9	159.5	162.3	158.1	210.5	146.3	155.1	180.0
N	168.8	180.9	171.5	180.0	179.0	182.2	175.9	175.0	191.7	176.0	162.5	160.6	161.3
N77	233.4	338.4	301.3	249.3	269.8	288.0	265.4	288.5	338.0	299.6	249.4	197.7	205.7
N78	128.6	142.9	123.0	126.5	120.3	117.8	121.5	125.4	125.5	132.5	110.5	120.3	127.6
N79	76.1	75.7	87.7	162.4	185.2	200.6	192.4	113.0	66.1	76.1	70.6	77.6	85.1
N80	112.5	111.6	110.7	119.6	121.4	128.2	114.4	118.1	117.4	126.4	109.4	130.3	116.3
N81	177.7	171.8	190.9	194.3	191.2	177.8	173.6	180.8	178.0	171.8	156.8	164.6	182.1
N82	251.1	221.5	210.3	246.3	222.3	215.1	224.4	219.2	274.0	214.8	236.4	226.1	229.0

* Preliminary data.