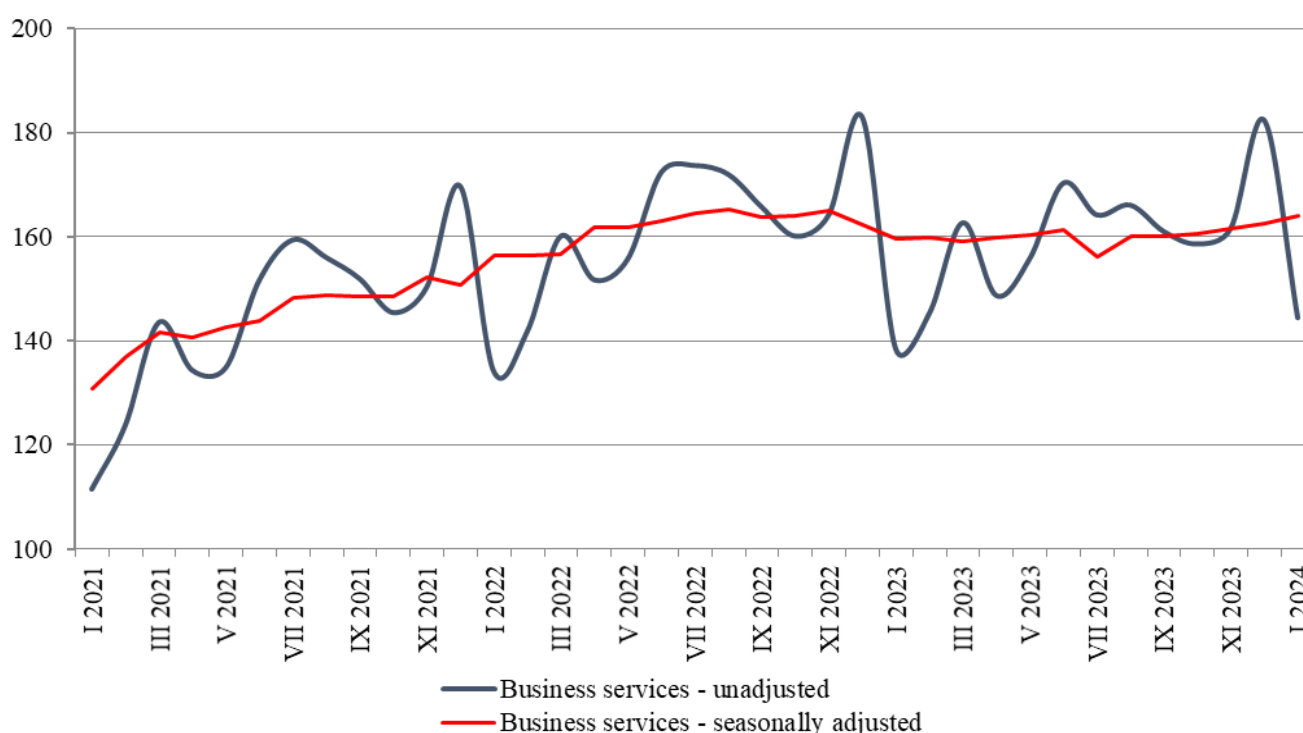


SERVICES PRODUCTION INDICES IN JANUARY 2024¹

The total production index² in **Services of the business economy** increased by 0.8% in January 2024 compared to the previous month. The data are preliminary and seasonally adjusted³.

During January 2024, the production index in **Services of the business economy** grew by 3.3% compared to the same month of 2023. The data are preliminary and calendar-adjusted⁴.

**Figure 1. Production indices for Business services
(2015 = 100)**



¹ January 2024 data are preliminary.

² The monthly production indices measure changes in production values of services enterprises. The information may be used to assess the current situation and the trends in the development of the business services as well as for short-term forecasts. In order to calculate the indices, services enterprises are observed by using a representative sample that forms about 75% of the annual receipts of the observed aggregate. The monthly production indices are calculated with 2015 as a base year.

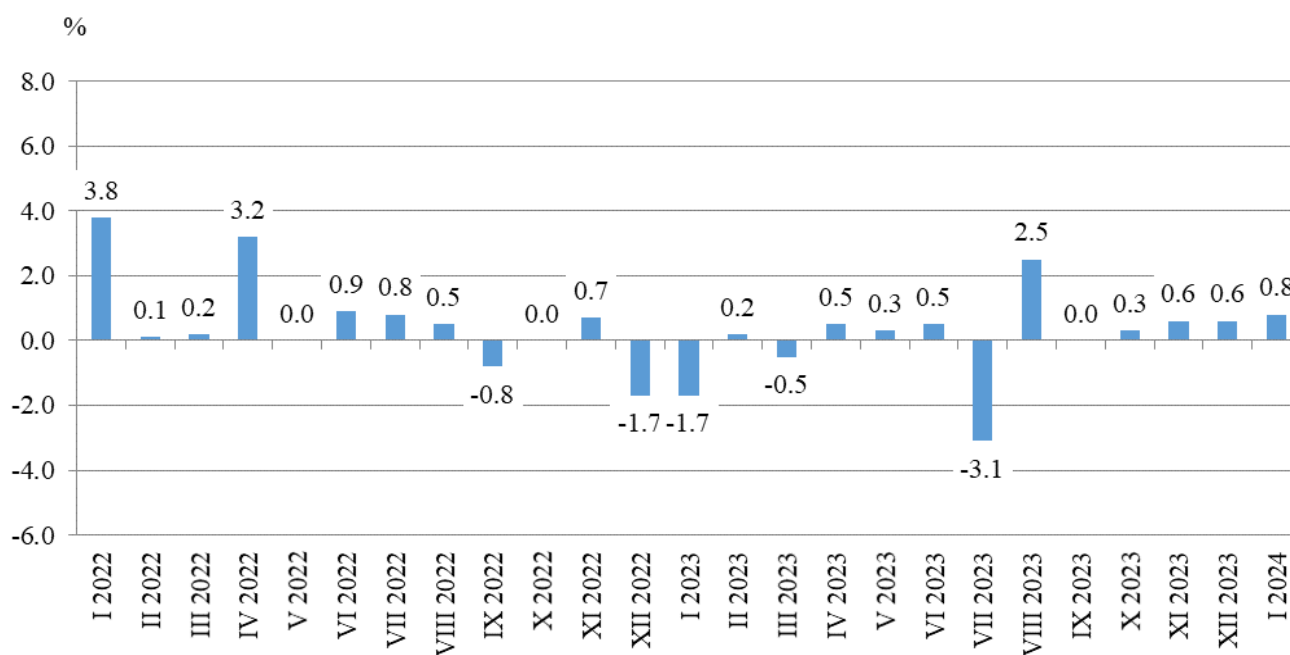
³ Seasonal adjustment is a statistical method, which eliminates the seasonal component of time series.

⁴ Calendar adjustment is an adjustment for variations caused by calendar effects, a different number of calendar and working days in the months, national holidays and outliers (for example, the presence of more non-working days in May could contribute to the decline in some activities).

Monthly changes

An increase, compared to the previous month, was registered in ‘Administrative and support service activities’ - by 12.1%, ‘Professional, scientific and technical activities’ - by 11.1%, ‘Information and communication’ - by 2.6% and ‘Transportation and storage’ - by 0.8%. In the ‘Accommodation and food service activities’ there was no change. A decline was seen in ‘Real estate activities’ - by 3.7%.

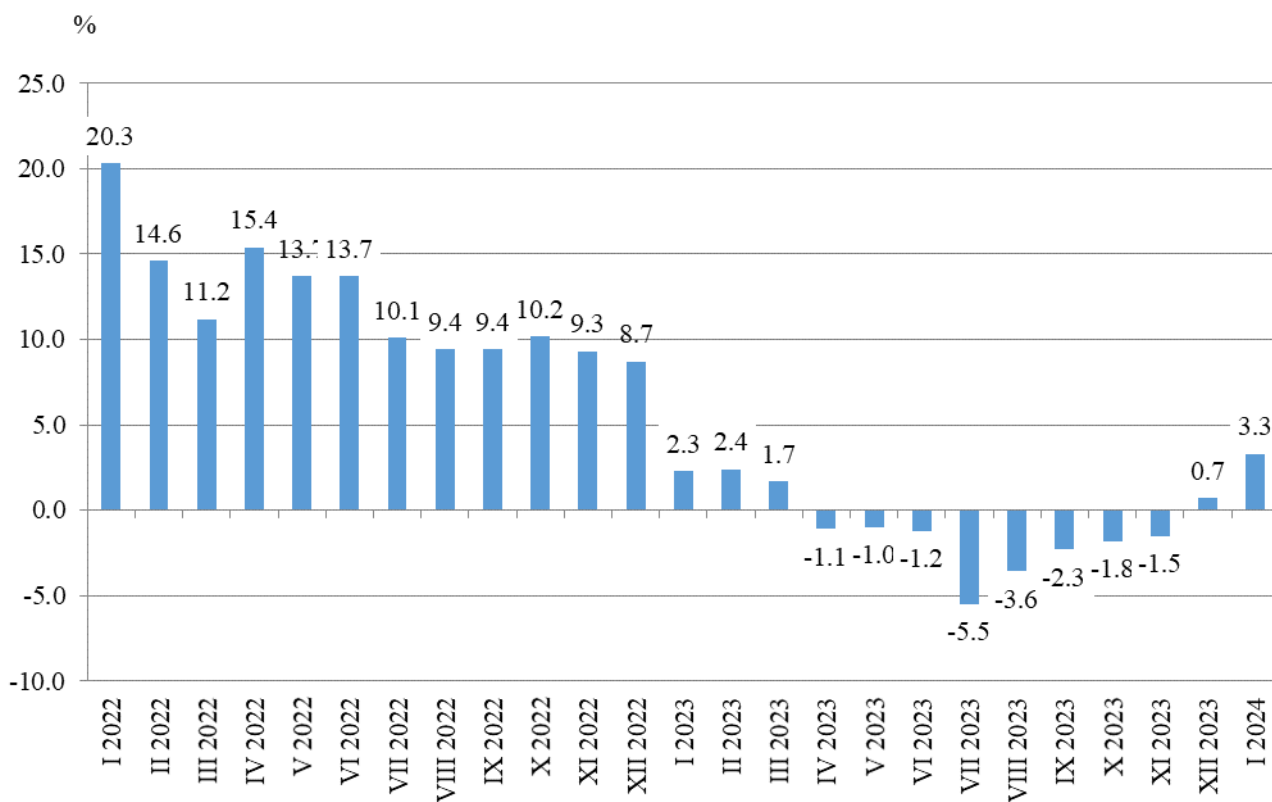
Figure 2. Changes of production indices for Business services compared to the previous month (Seasonally adjusted data)



Annual changes

On an annual basis, a rise was observed in ‘Accommodation and food service activities’ - by 8.4%, ‘Administrative and support service activities’ - by 6.7%, ‘Information and communication’ - by 5.6% and in ‘Transportation and storage’ - by 1.8%. A decrease was reported in ‘Real estate activities’ - by 3.6% and ‘Professional, scientific and technical activities’ - by 2.4%

Figure 3. Changes of production indices for Business services compared to the same month of the previous year (Calendar-adjusted data)





Annex

Table 1

Changes of production indices in services¹
(Compared to the previous month)

(Per cent)

Economic activities	NACE.BG - 2008	2023					2024
		VIII	IX	X	XI	XII	I*
Services of the business economy (except trade and financial and insurance activities)	HTNXK	2.5	0.0	0.3	0.6	0.6	0.8
Transportation and storage	H	1.7	0.8	3.0	-3.6	1.8	0.8
Land transport and transport via pipelines	H49	0.8	1.0	1.1	-4.1	3.6	-2.1
Water transport	H50	6.6	-2.6	6.7	-1.8	9.0	-14.6
Air transport	H51	2.8	3.0	18.6	-24.0	-1.4	2.4
Warehousing and support activities for transportation	H52	2.3	0.8	5.1	-1.1	-0.4	4.2
Postal and courier activities	H53	4.1	-0.9	3.0	-0.8	-1.5	8.7
Accommodation and food service activities	I	-1.9	7.4	1.3	0.5	2.3	0.0
Accommodation	I55	-2.8	12.1	0.5	0.8	4.6	1.1
Food and beverage service activities	I56	-0.5	2.1	3.3	-0.1	0.4	-2.5
Information and communication	J	3.0	2.2	-1.8	0.4	2.6	2.6
Publishing activities	J58	-6.9	4.1	-12.1	16.1	3.4	-12.6
Motion picture, video, television programme production; programming and broadcasting activities	J59	22.6	-26.3	42.0	-34.3	38.0	-20.6
Programming and broadcasting activities	J60	10.2	-1.4	-2.4	-1.3	1.3	1.3
Telecommunications	J61	5.3	-2.3	-0.8	2.5	-1.5	5.8
Computer programming, consultancy and related activities	J62	2.7	6.4	-4.0	-1.9	6.7	1.9
Information service activities	J63	-4.0	-4.4	7.3	10.7	-11.4	4.5
Real estate activities	L	1.7	-0.2	-1.3	10.6	-6.2	-3.7
Professional, scientific and technical activities required by STS Regulation	M_STS	-18.9	3.6	0.2	11.8	-1.8	11.1
Legal and accounting activities	M69	-4.4	0.9	-4.2	-5.4	10.5	-13.4
Management consultancy activities	M702	-3.5	8.7	3.4	-3.2	6.9	-8.7
Architectural and engineering activities; technical testing and analysis	M71	49.0	-33.4	0.1	0.3	0.5	-5.3
Advertising and market research	M73	3.4	-3.2	3.4	3.0	-7.9	5.4
Other professional, scientific and technical activities	M74	8.5	-8.8	16.3	3.7	-15.3	-0.6
Administrative and support service activities	N	-1.1	3.8	-0.1	1.7	-7.1	12.1
Rental and leasing activities	N77	0.1	13.9	-20.4	-8.2	-3.9	14.2
Employment activities	N78	5.9	-11.2	2.2	3.5	-0.8	7.6
Travel agency, tour operator reservation service and related activities	N79	-2.9	1.4	2.4	0.2	-8.3	12.8
Security and investigation activities	N80	1.3	1.1	-0.3	5.1	-6.5	3.5
Services to buildings and landscape activities	N81	-2.9	1.4	2.4	0.2	-8.3	12.8
Office administrative, office support and other business support activities	N82	1.3	1.1	-0.3	5.1	-6.5	3.5

¹ Seasonally adjusted data.

* Preliminary data.



Table 2

Changes of production indices in services¹
(Compared to the same month of the previous year)

Economic activities	NACE.BG - 2008	2023					(Per cent)
		VIII	IX	X	XI	XII	2024 I*
Services of the business economy (except trade and financial and insurance activities)	HTNXK	-3.6	-2.3	-1.8	-1.5	0.7	3.3
Transportation and storage	H	-5.3	-3.8	2.2	-4.5	-1.6	1.8
Land transport and transport via pipelines	H49	0.0	2.8	4.7	-4.4	0.3	-1.6
Water transport	H50	9.9	-0.6	13.3	-2.7	2.9	-6.2
Air transport	H51	-5.1	-8.8	-2.6	-27.6	-18.4	-17.6
Warehousing and support activities for transportation	H52	-16.3	-15.1	-3.8	-6.4	-6.0	3.9
Postal and courier activities	H53	8.2	4.3	9.9	6.5	5.5	20.4
Accommodation and food service activities	I	-9.6	1.9	3.7	1.5	8.3	8.4
Accommodation	I55	-14.6	1.3	-0.7	-3.0	12.0	20.2
Food and beverage service activities	I56	-0.5	2.7	8.0	5.9	5.0	-2.3
Information and communication	J	-4.5	-2.5	-6.9	-5.1	1.1	5.6
Publishing activities	J58	3.8	-3.6	-17.6	11.9	13.1	-7.1
Motion picture, video and TV programme production, music publishing activities	J59	-6.6	-30.2	32.6	-40.1	-2.2	-4.6
Programming and broadcasting activities	J60	2.1	-0.6	-0.4	-4.1	0.6	0.6
Telecommunications	J61	3.0	-0.5	-4.4	-2.7	-1.0	9.3
Computer programming, consultancy and related activities	J62	-8.2	-1.6	-8.8	-10.7	3.3	3.0
Information service activities	J63	-8.8	-11.0	-5.9	28.1	-9.0	15.6
Real estate activities	L	-14.7	-11.9	-7.0	0.6	-0.2	-3.6
Professional, scientific and technical activities required by STS Regulation	M_STS	9.6	-0.4	-1.8	2.4	0.9	-2.4
Legal and accounting activities	M69	-15.6	-1.4	-0.8	1.8	-1.2	-3.4
Management consultancy activities	M702	5.1	-11.7	-15.0	5.4	-1.7	18.9
Architectural and engineering activities; technical testing and analysis	M71	10.8	6.9	8.2	-3.6	7.6	-10.2
Advertising and market research	M73	10.0	13.4	16.1	12.4	17.6	11.7
Other professional, scientific and technical activities	M74	36.3	-3.1	-10.3	-0.8	-10.8	-15.8
Administrative and support service activities	N	4.9	1.7	5.6	8.5	-1.3	6.7
Rental and leasing activities	N77	44.2	37.1	71.1	69.2	58.9	10.2
Employment activities	N78	-9.7	-4.0	-5.7	2.4	-10.4	6.2
Travel agency, tour operator reservation service and related activities	N79	-5.7	-0.1	-19.6	-22.4	-29.0	15.9
Security and investigation activities	N80	5.3	-6.7	-3.1	0.5	-1.0	7.7
Services to buildings and landscape activities	N81	-3.1	-1.5	-0.3	-5.7	-12.4	3.9
Office administrative, office support and other business support activities	N82	-9.4	-9.8	-11.5	-9.2	-22.3	4.0

¹ Calendar-adjusted data.

* Preliminary data.



Table 3

**Production indices in services - seasonally adjusted
(2015 = 100)**

NACE.BG - 2008	2023												2024
	I	II	III	IV	V	VI	VII	VIII	IX	X	XI	XII	I*
HTNXK	159.5	159.8	159.1	159.8	160.3	161.2	156.1	160.0	160.1	160.6	161.6	162.5	163.9
H	138.4	138.5	140.3	136.5	138.5	136.2	133.8	136.0	137.1	141.3	136.2	138.7	139.7
H49	130.6	130.9	133.3	130.8	130.9	128.6	128.6	129.7	131.0	132.5	127.0	131.6	128.8
H50	112.5	97.7	101.1	100.7	104.5	114.4	104.8	111.7	108.8	116.0	113.9	124.2	106.1
H51	153.6	146.9	174.0	178.6	145.8	152.7	131.8	135.5	139.6	165.6	125.9	124.2	127.1
H52	146.9	147.1	143.5	136.8	145.2	140.1	135.9	139.0	140.1	147.2	145.5	144.9	151.0
H53	169.8	172.6	181.6	174.4	180.6	183.9	177.8	185.1	183.5	188.9	187.4	184.5	200.6
I	144.8	147.5	147.1	143.0	140.1	146.6	138.5	135.9	145.9	147.8	148.5	152.0	151.9
I55	138.8	142.7	143.3	140.3	135.9	146.3	131.6	128.0	143.4	144.2	145.3	152.1	153.7
I56	151.4	152.2	150.8	144.5	144.9	147.0	145.7	144.9	148.0	152.8	152.6	153.3	149.5
J	200.4	200.2	197.2	196.1	195.5	211.1	193.3	199.0	203.4	199.7	200.5	205.7	211.1
J58	112.8	106.0	107.6	132.3	113.7	115.3	117.9	109.8	114.2	100.5	116.6	120.6	105.4
J59	68.3	74.3	77.2	83.2	81.6	77.1	70.6	86.6	63.8	90.6	59.5	82.1	65.2
J60	85.0	82.8	93.1	86.4	86.9	87.6	78.9	87.0	85.8	83.7	82.6	83.7	84.8
J61	165.8	169.6	162.2	163.7	171.0	182.0	166.0	174.8	170.8	169.5	173.8	171.2	181.1
J62	243.9	234.5	235.9	228.2	224.2	251.8	224.1	230.3	244.9	235.2	230.7	246.1	250.6
J63	214.9	257.6	236.9	253.6	247.1	225.8	246.4	236.7	226.2	242.7	268.7	237.9	248.6
L	130.8	128.8	133.0	135.0	134.9	128.9	126.6	128.7	128.5	126.8	140.2	131.5	126.7
M_STS	146.2	145.0	140.7	147.1	156.1	139.2	148.0	155.6	144.0	142.3	144.9	149.0	143.1
M69	149.8	147.6	133.4	138.6	136.9	121.8	140.1	136.0	144.6	139.4	148.5	147.8	144.7
M702	144.0	156.6	152.8	160.0	163.7	159.4	165.8	134.4	139.3	139.6	156.0	153.2	170.2
M71	122.1	121.7	113.9	142.2	148.9	130.5	134.3	128.4	129.6	124.1	117.4	129.7	112.4
M73	131.9	132.0	132.9	137.6	135.6	133.7	140.5	135.5	147.3	152.3	147.3	157.5	143.7
M74	184.3	170.6	177.3	158.5	195.3	156.0	164.0	244.3	162.7	162.8	163.3	164.1	155.4
N	166.5	170.6	170.4	183.9	173.3	171.1	172.1	178.0	172.2	178.0	183.4	168.8	177.9
N77	237.0	257.8	251.3	342.5	288.1	234.4	260.2	282.4	257.6	299.5	310.6	263.1	261.5
N78	122.9	125.5	131.6	133.4	125.8	128.1	120.2	118.8	123.4	123.3	125.3	116.4	130.5
N79	104.5	104.5	104.6	102.6	103.6	132.6	124.6	124.7	142.1	113.1	103.8	99.8	114.0
N80	117.2	117.5	115.3	113.5	113.8	119.5	118.9	125.9	111.8	114.3	118.3	117.3	126.2
N81	178.4	180.0	184.2	175.4	182.3	182.2	176.1	171.1	173.4	177.6	177.9	163.2	184.0
N82	225.9	225.9	227.5	225.2	219.8	230.8	227.1	230.0	232.7	231.9	243.7	227.9	235.9

* Preliminary data.



Table 4

Production indices in services - calendar-adjusted
(2015 = 100)

NACE.BG - 2008	2021	2022	2023												2024
	I	I	I	II	III	IV	V	VI	VII	VIII	IX	X	XI	XII	I*
HTNXK	112.9	135.7	138.9	145.7	161.0	151.9	155.0	169.5	165.8	164.8	162.1	158.9	160.8	185.8	143.4
H	108.6	121.7	119.8	127.6	144.8	132.0	138.4	142.4	145.5	135.0	138.0	147.6	139.7	137.3	121.9
H49	107.8	111.5	112.0	124.1	142.7	128.5	130.7	131.7	139.4	121.7	129.7	141.4	133.1	130.7	110.2
H50	72.4	84.0	88.8	76.0	94.6	94.6	105.5	122.5	123.5	117.6	114.5	127.9	112.6	138.0	83.3
H51	33.8	56.8	87.4	82.8	114.0	133.4	138.1	193.4	227.6	237.3	194.7	147.1	73.6	80.2	72.0
H52	110.3	141.6	129.9	133.0	143.1	132.3	146.9	149.7	145.4	144.1	142.6	152.2	146.0	140.6	134.9
H53	147.7	162.0	165.8	165.3	193.5	167.4	176.8	187.3	168.3	172.5	172.6	187.3	205.9	207.9	199.6
I	49.8	88.9	112.2	117.9	123.9	118.3	130.6	161.7	206.4	232.5	164.0	123.6	110.4	131.5	121.6
I55	46.1	73.3	98.7	111.7	111.7	106.0	115.1	163.2	223.3	262.6	168.2	107.4	96.4	120.3	118.6
I56	54.2	107.2	128.1	125.1	138.2	132.7	148.8	159.9	186.5	197.2	159.2	142.5	126.8	144.6	125.1
J	154.2	183.5	180.7	183.1	206.7	186.2	186.6	219.6	187.6	186.0	200.8	201.7	206.7	259.6	190.9
J58	84.4	100.3	97.0	83.7	90.8	117.8	101.2	123.0	139.6	106.8	143.8	106.8	121.9	140.5	90.1
J59	66.1	56.8	48.3	60.0	73.3	76.3	72.3	76.6	62.7	72.2	53.4	103.9	68.2	154.8	46.1
J60	56.8	59.4	57.4	73.3	118.7	80.8	90.4	99.5	63.5	63.8	84.3	99.6	114.4	82.6	57.8
J61	148.5	155.8	160.5	155.6	159.8	156.8	168.5	185.1	168.6	178.4	175.5	168.8	173.7	190.2	175.4
J62	173.3	218.3	214.5	214.5	255.3	215.4	211.1	265.8	212.7	206.9	236.5	238.7	233.5	329.4	220.9
J63	159.6	221.6	193.2	244.3	250.4	248.3	233.0	226.8	232.1	213.2	215.8	235.1	317.2	290.9	223.3
L	109.1	133.5	121.8	122.8	132.5	125.0	123.9	130.2	129.2	130.7	137.7	119.3	143.7	156.5	117.4
M_STS	92.6	110.0	120.9	133.6	146.0	146.0	151.8	149.2	146.4	140.2	140.1	139.9	142.5	200.3	117.9
M69	104.8	123.3	129.6	134.4	141.3	148.7	136.1	131.5	142.5	120.0	136.0	133.0	143.3	186.0	125.2
M702	86.7	98.1	117.5	138.8	166.8	156.6	154.5	182.7	158.6	120.1	152.8	136.2	143.8	197.8	139.8
M71	75.0	79.8	86.9	112.0	112.6	139.7	141.5	137.7	137.9	122.5	117.8	115.0	112.7	210.6	78.0
M73	66.3	90.0	101.4	116.5	132.6	137.3	136.5	137.6	134.3	119.9	142.0	164.8	167.5	193.8	113.2
M74	125.8	157.6	170.6	167.9	184.7	148.1	191.2	162.8	159.8	216.9	159.5	162.3	158.1	210.5	143.6
N	117.1	138.9	149.3	161.4	168.8	180.9	171.5	180.0	179.0	182.2	175.9	175.0	191.7	176.0	159.3
N77	128.6	139.7	193.2	227.6	233.4	338.4	301.3	249.3	269.8	288.0	265.4	288.5	338.0	299.6	212.9
N78	80.6	113.6	108.7	121.5	128.6	142.9	123.0	126.5	120.3	117.8	121.5	125.4	125.5	132.5	115.4
N79	19.7	25.6	59.3	66.0	76.1	75.7	87.7	162.4	185.2	200.6	192.4	113.0	66.1	76.1	68.8
N80	106.4	110.0	108.1	115.2	112.5	111.6	110.7	119.6	121.4	128.2	114.4	118.1	117.4	126.4	116.4
N81	115.4	136.0	150.8	162.8	177.7	171.8	190.9	194.3	191.2	177.8	173.6	180.8	178.0	171.8	156.6
N82	179.2	231.9	228.1	232.1	251.1	221.5	210.3	246.3	222.3	215.1	224.4	219.2	274.0	214.8	237.1

* Preliminary data.