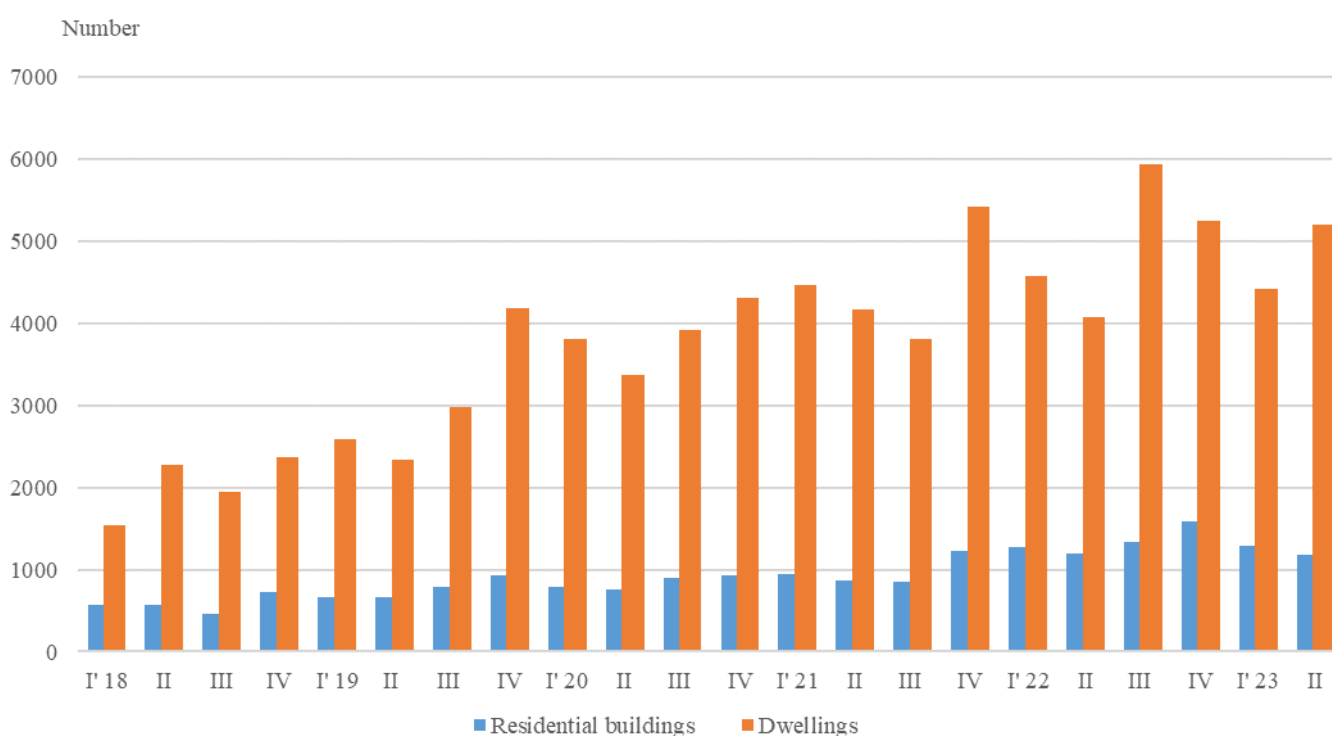


## NEWLY BUILT RESIDENTIAL BUILDINGS AND DWELLINGS COMPLETED IN THE SECOND QUARTER OF 2023 (PRELIMINARY DATA)

According to preliminary data from the National Statistical Institute in the second quarter of 2023, the number of newly built residential buildings was 1 180, and the newly built dwellings in them were 5 198 (Annex, Table 1). Compared to the second quarter of 2022, the buildings were by 17 less (or by 1.4%), and the newly built dwellings in them increased by 1 121 more, or 27.5%. (Figure 1).

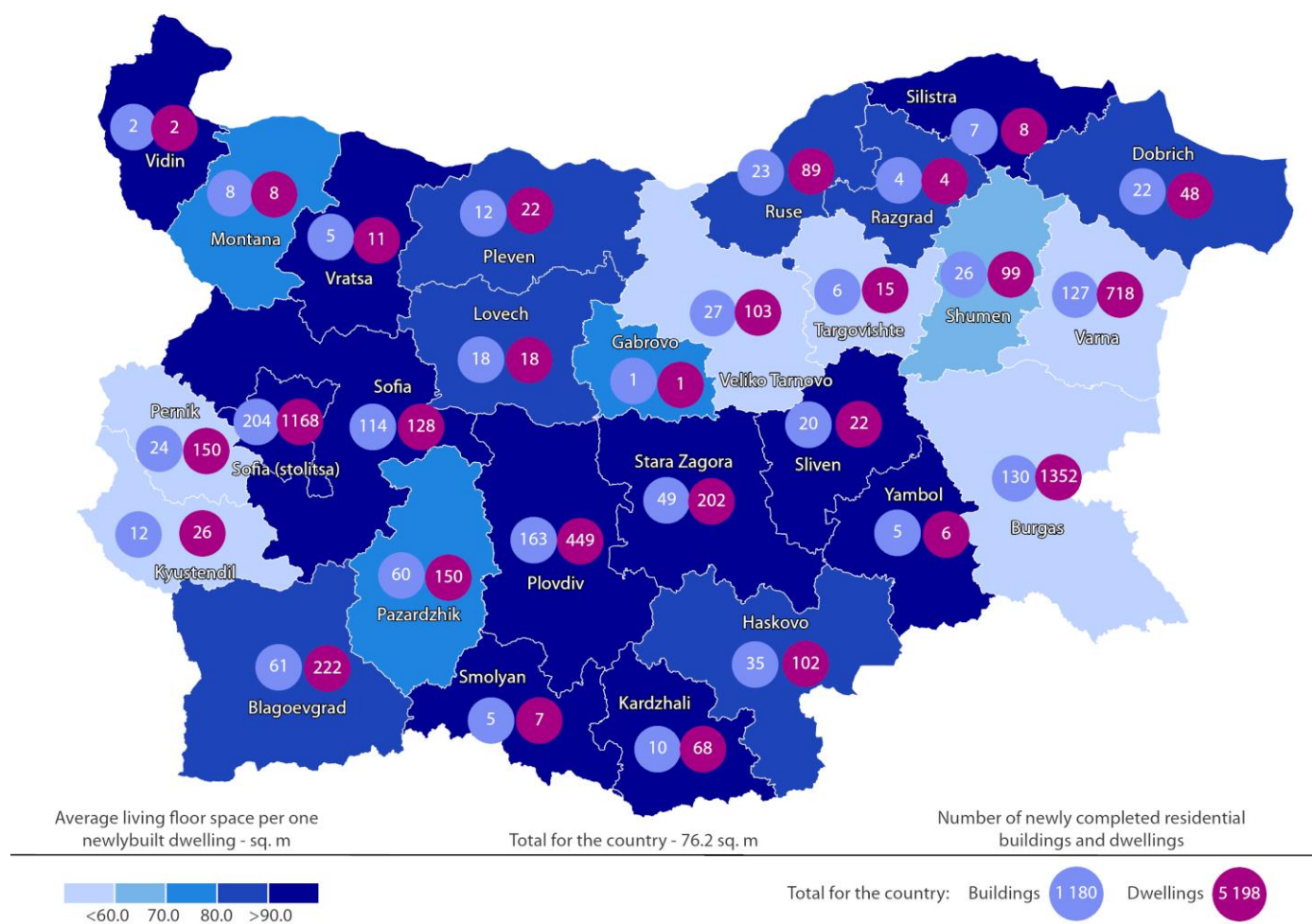
**Figure 1. Newly built residential buildings and dwellings completed by quarters**



In the second quarter of 2023, 75.3% of the newly built residential buildings had steel-concrete construction, 20.9% had solid structure, 3.6% had 'other' and 0.2% had a panel. The highest is the relative share of houses (78.7%), followed by blocks of flats (15.6%). As compared to the second quarter of 2022, the number of newly built houses dropped, while the number of blocks of flats rose (Annex, Table 2).

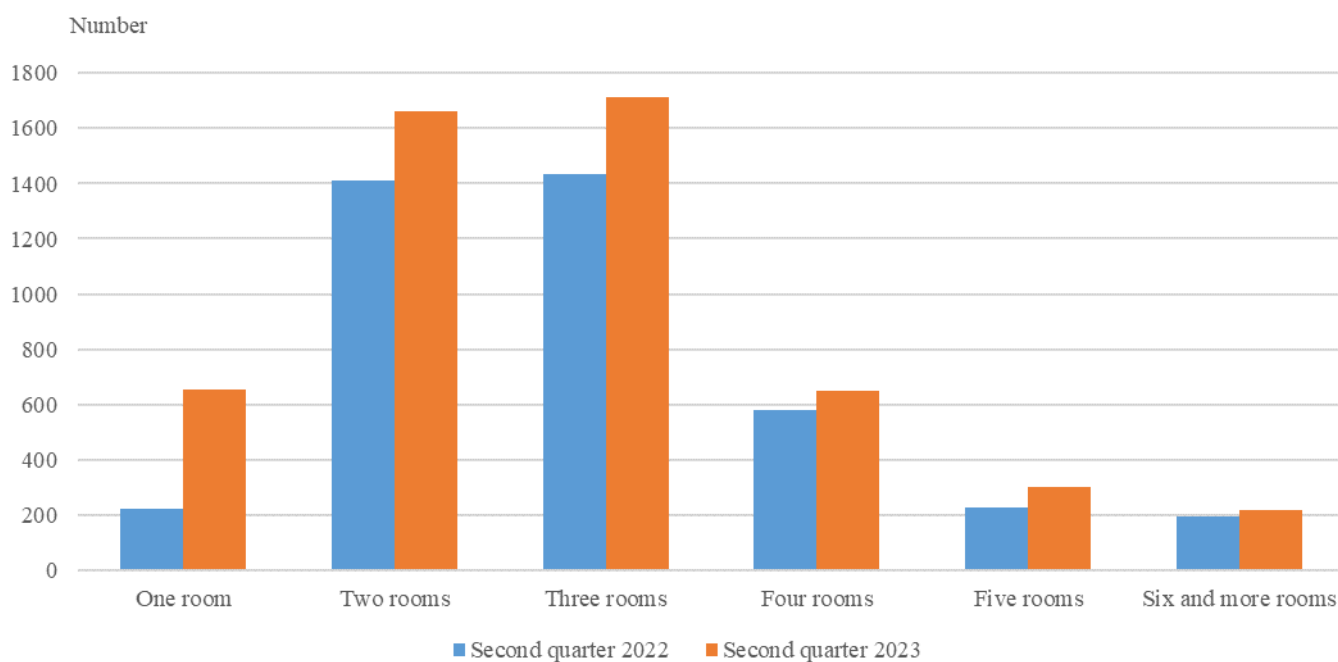
The highest is the number of residential buildings built in the district of Sofia (stolitsa) - 204 residential buildings with 1 168 dwellings, followed by Plovdiv - 163 residential buildings with 449 dwellings, and Burgas - 130 buildings with 1 352 dwellings in them (Figure 2).

**Figure 2. Newly built residential buildings and dwellings completed in the second quarter of 2023 by districts**



The highest is the number of newly built dwellings with three rooms (32.9%), followed by the number of those with two rooms (32.0%), and the lowest is the number of dwellings with six and more rooms (4.2%) (Figure 3).

**Figure 3. Newly built dwellings completed by number of rooms**

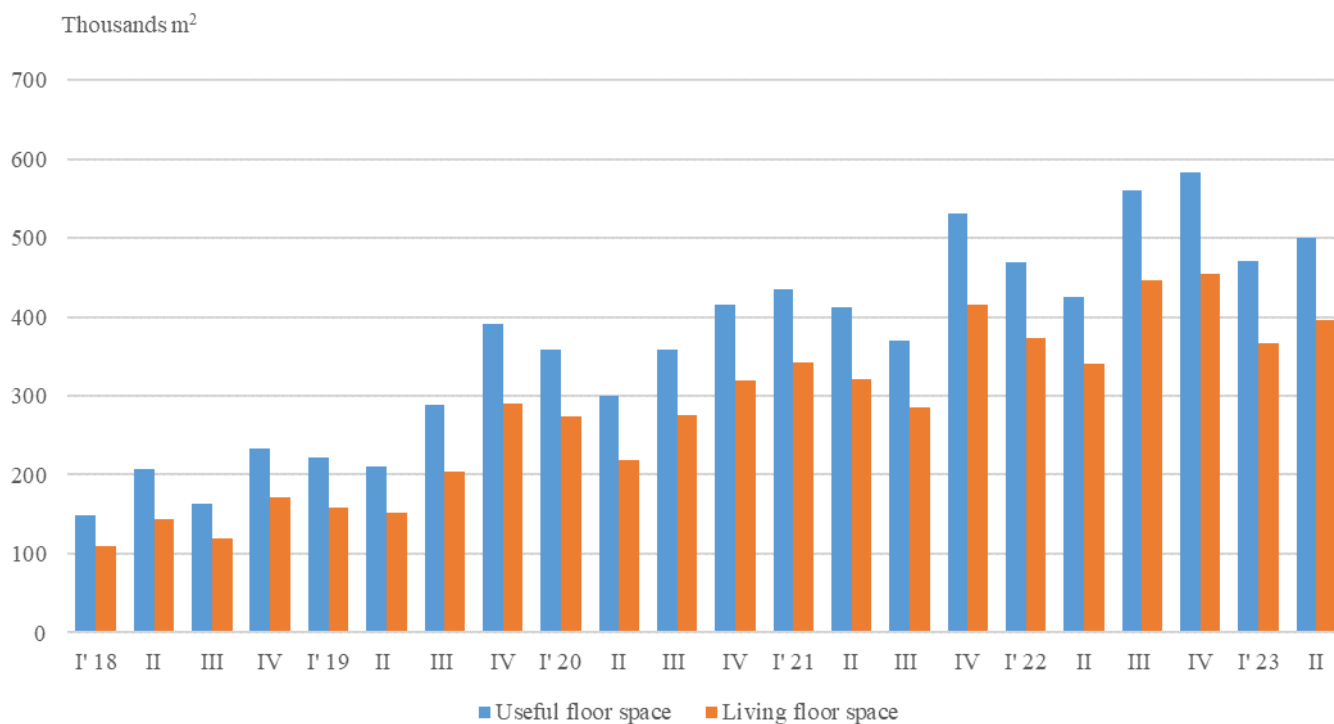


In the second quarter of 2023, the total useful space of newly built dwellings was 500.1 thousand sq. m, or by 17.6% more, compared to the same quarter of 2022, and the living floor space increased (by 16.0%) to 395.9 thousand sq. m (Figure 4).

The **average useful floor** space of a newly built dwelling decreased from 104.3 sq. m in the second quarter of 2022 to 96.2 sq. m in the same quarter of 2023.

The biggest average useful floor space of a newly built dwelling was recorded in the districts of Silistra - 212.9 sq.m, and Sofia - 157.0 sq. m, and the smallest ones in Burgas - 53.0 sq. m, and Veliko Tarnovo - 72.3 sq. meters.

**Figure 4. Total useful floor space and living floor space of newly built dwellings completed by quarters**





## Methodological notes

The statistical data about the newly built residential buildings and dwellings are prepared based on quarterly reports of the municipal administrations.

In the scope of the survey are newly built residential buildings with approved or valid usage licenses according to Regulation No. 2/31.07.2003 of the Ministry of Regional Development and Public Works.

**Living floor space** is the floor space of living rooms, bedrooms, recesses for sleeping, dining rooms, cabinets and libraries of scientists and drawing rooms, as well as the space of kitchens with over 4 sq. m of floor space. The space of the kitchens, with over 4 sq. m of floor area, was presented separately before 31.12.2018.

**Service floor space** is the floor space of rooms and kitchens with less than 4 square meters of floor space, vestibules with a portal or other screen, corridors, bathrooms, toilets, larders, hanging closets and other service rooms, such as drying rooms, laundries or balconies regardless of their space.

**The useful floor space** of the dwelling is the sum of the living-floor space and the service floor space.

**The average useful floor space** is the ratio between the useful floor space and the number of dwellings.

Annex

Table 1

Newly built residential buildings and dwellings completed in the second quarter of 2023<sup>1</sup>

Districts	Newly completed residential buildings and dwellings - in numbers		Useful floor area of newly built dwellings - sq. m		
	Buildings	Dwellings	Total	Living floor space, incl. kitchens over 4 sq. m	Service floor space, incl. kitchens under 4 sq. m
<b>Total</b>	<b>1180</b>	<b>5198</b>	<b>500052</b>	<b>395930</b>	<b>104122</b>
Blagoevgrad	61	222	20025	17957	2068
Burgas	130	1352	71656	53185	18471
Varna	127	718	56665	41896	14769
Veliko Tarnovo	27	103	7442	5580	1862
Vidin	2	2	279	197	82
Vratsa	5	11	1703	1174	529
Gabrovo	1	1	150	80	70
Dobrich	22	48	5348	4246	1102
Kardzhali	10	68	9783	8467	1316
Kyustendil	12	26	2228	1375	853
Lovech	18	18	2362	1575	787
Montana	8	8	825	562	263
Pazardzhik	60	150	16235	11534	4701
Pernik	24	150	11299	8482	2817
Pleven	12	22	2515	1940	575
Plovdiv	163	449	51515	40620	10895
Razgrad	4	4	527	354	173
Ruse	23	89	11506	7722	3784
Silistra	7	8	1703	1049	654
Sliven	20	22	3361	2383	978
Smolyan	5	7	709	640	69
Sofia	114	128	20093	16908	3185
Sofia (stolitsa)	204	1168	157144	131274	25870
Stara Zagora	49	202	23716	20757	2959
Targovishte	6	15	1413	884	529
Haskovo	35	102	10099	8251	1848
Shumen	26	99	8893	6128	2765
Yambol	5	6	858	710	148

<sup>1</sup>Preliminary data.

**Table 2**

**Newly built residential buildings by type of building**

	(Number)																	
	2019				2020				2021				2022				2023*	
	I quarter	II quarter	III quarter	IV quarter	I quarter	II quarter	III quarter	IV quarter	I quarter	II quarter	III quarter	IV quarter	I quarter	II quarter	III quarter	IV quarter	I quarter	II quarter
<b>Total</b>	<b>665</b>	<b>662</b>	<b>788</b>	<b>937</b>	<b>792</b>	<b>757</b>	<b>899</b>	<b>928</b>	<b>952</b>	<b>867</b>	<b>858</b>	<b>1221</b>	<b>1271</b>	<b>1197</b>	<b>1336</b>	<b>1586</b>	<b>1289</b>	<b>1180</b>
Houses	490	504	576	693	553	530	659	667	683	642	632	918	1014	933	1053	1299	1044	929
Blocks of flats	111	98	125	183	169	170	161	184	182	139	140	216	169	179	206	197	166	184
Mixed buildings	31	27	33	36	34	34	30	26	38	45	33	33	36	27	26	36	34	29
Hostels	1	2	1	1	1	2	2	1	1	2	2	-	1	-	1	-	-	-
Country houses	29	30	51	24	35	21	46	49	45	39	51	54	47	58	50	54	45	38
Buildings of institutional households	3	1	2	-	-	-	1	1	3	-	-	-	4	-	-	-	-	-

\* Preliminary data.