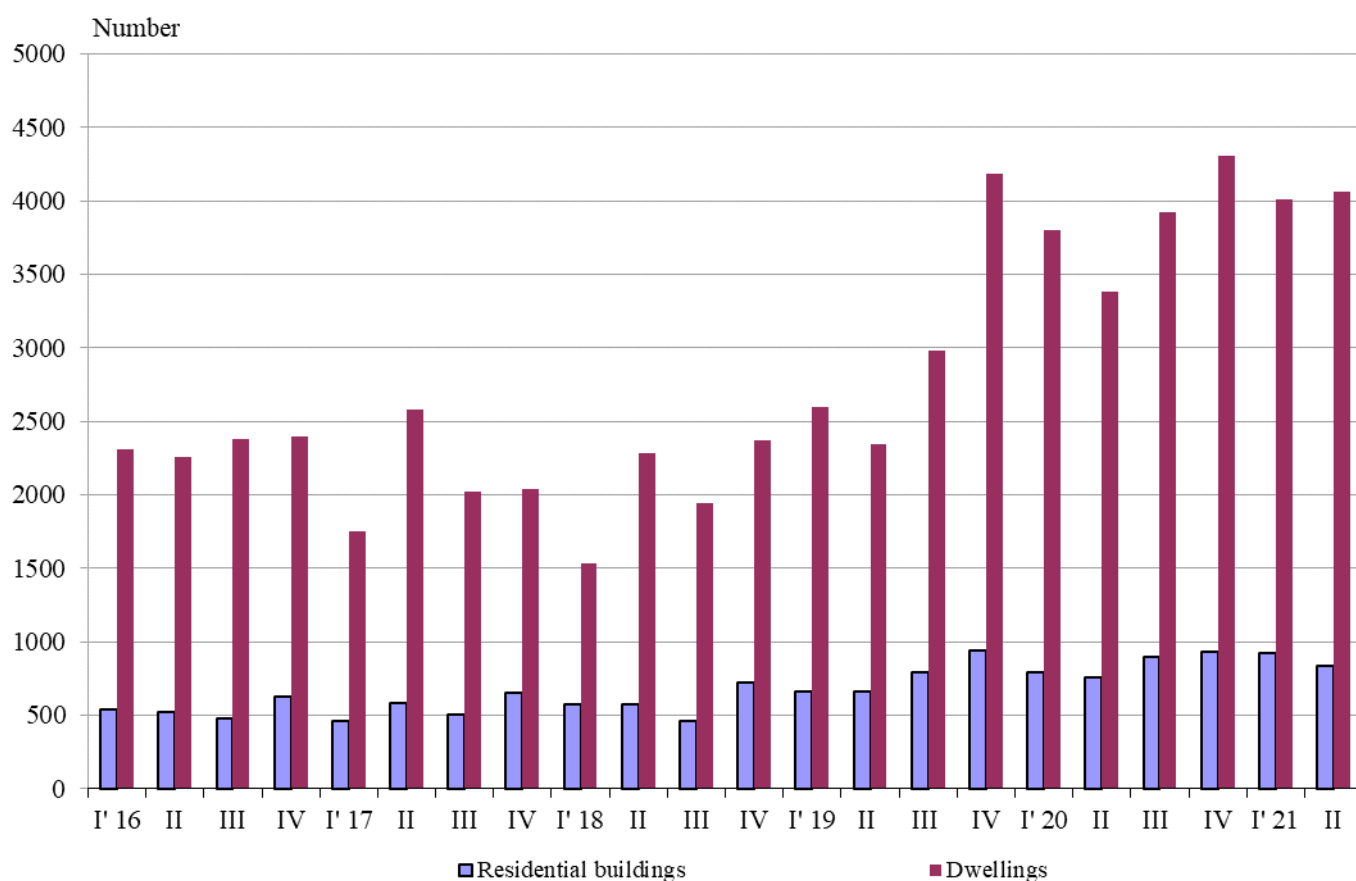


**NEWLY BUILT RESIDENTIAL BUILDINGS AND DWELLINGS
 COMPLETED IN THE SECOND QUARTER OF 2021
 (PRELIMINARY DATA)**

According to preliminary data of the National Statistical Institute in the second quarter of 2021 the number of newly built residential buildings was 838 and the newly built dwellings in them were 4 058 (Annex, Table 1). Compared to the second quarter of 2020 the buildings were by 81 more (or by 10.7%), and the newly built dwellings in them increased by 678 or by 20.1% (Figure 1).

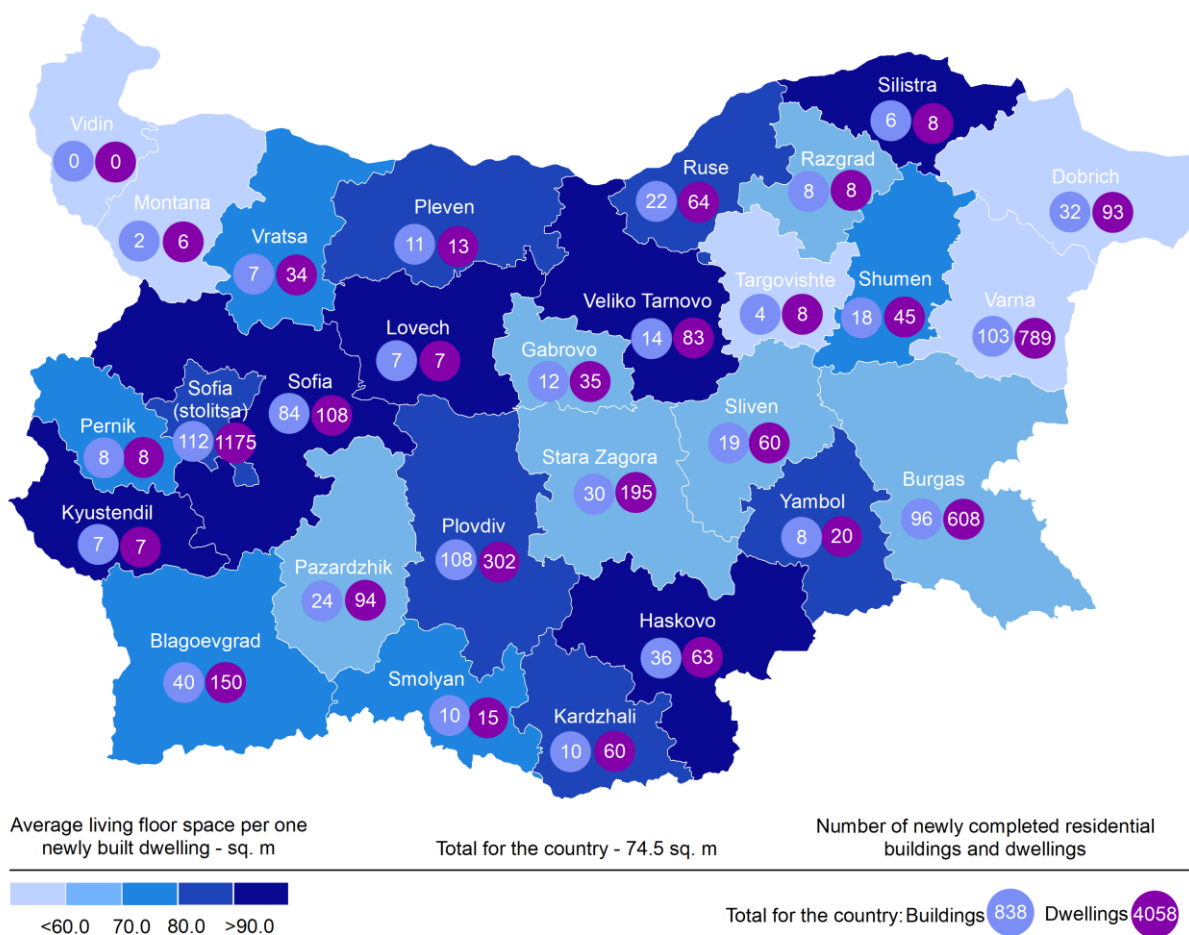
Figure 1. Newly built residential buildings and dwellings completed by quarters



In the second quarter of 2021, 73.9% of the newly built residential buildings were with steel-concrete construction, 21.6% with solid structure, 3.9% with 'other' and 0.6% with panel. Highest is the relative share of houses (73.6%), followed by blocks of flats (16.6%). As compared to the second quarter of 2020 the number of newly built houses, mixed buildings and country houses rose, while the number of blocks of flats dropped (Annex, Table 2).

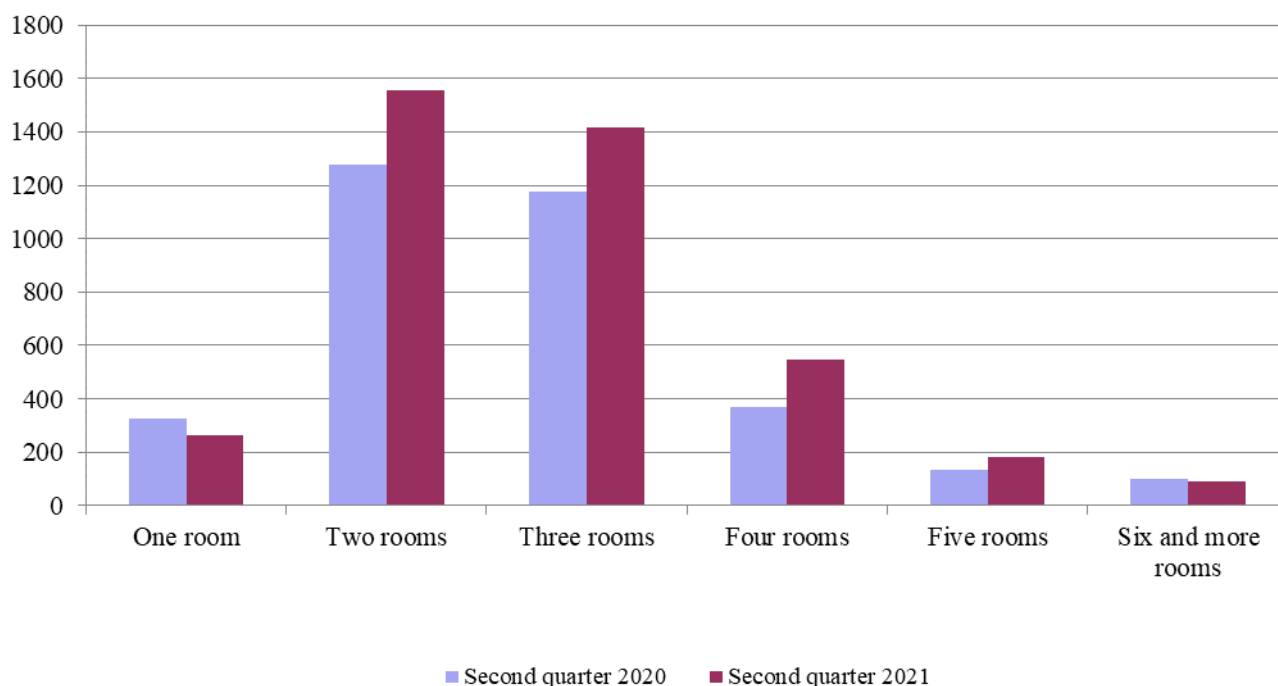
Highest is the number of residential buildings built in district Sofia (stolitsa) - 112 residential buildings with 1 175 dwellings, followed by Plovdiv - 108 residential buildings with 302 dwellings and Varna - 103 buildings with 789 dwellings in them (Figure 2).

Figure 2. Newly built residential buildings and dwellings completed in second quarter of 2021 by districts



Highest is the number of newly built dwellings with two rooms (38.3%), followed by the number of those with three rooms (35.0%) and lowest is the number of dwellings with six and more rooms - 2.2% (Figure 3).

Figure 3. Newly built dwellings completed by number of rooms

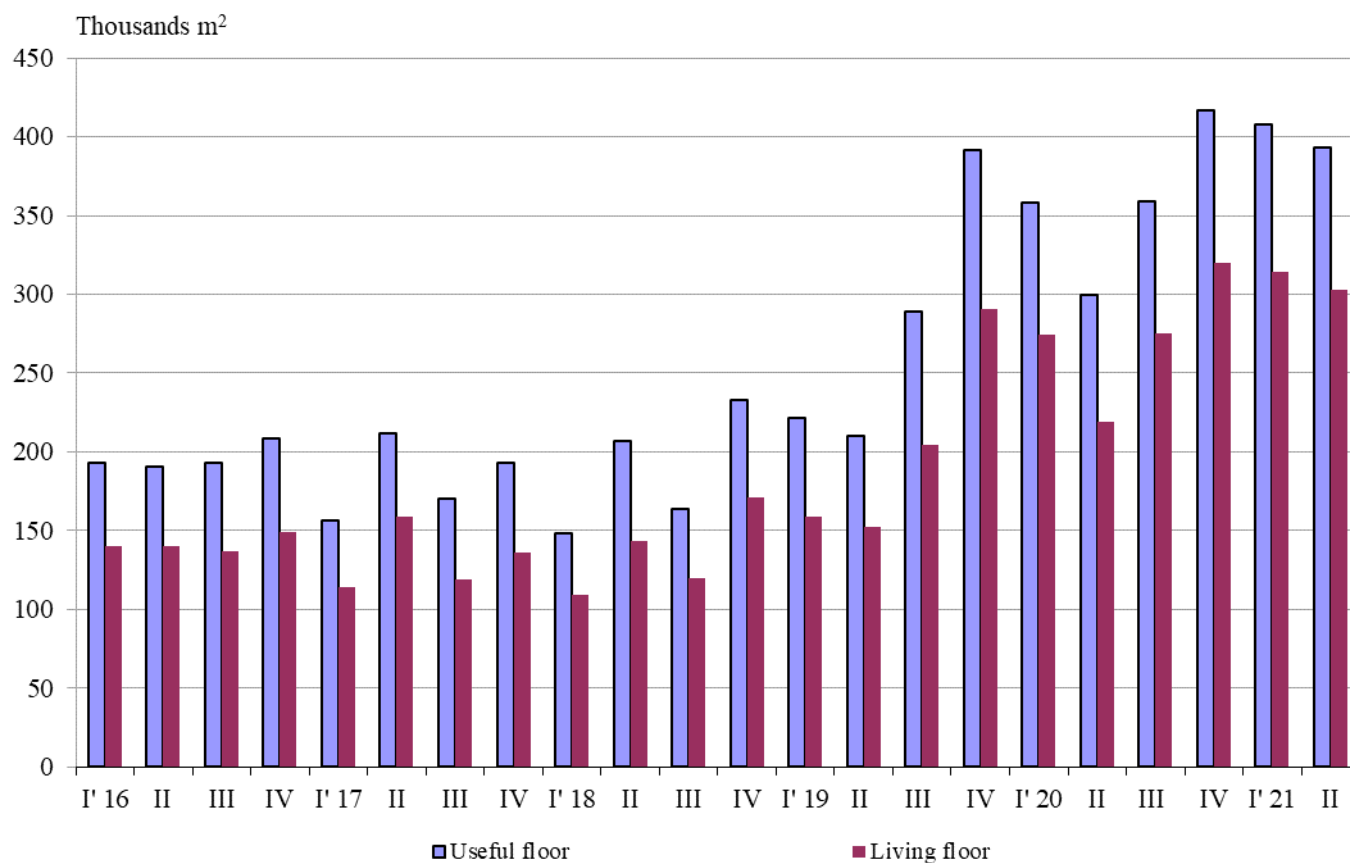


In the second quarter of 2021 **the total useful space** of newly built dwellings was 393.2 thousand sq. m or by 31.3% more, compared to the same quarter of 2020, and **the living floor space** increased (by 37.9%) to 302.4 thousand sq. m (Figure 4).

The **average useful floor space** of a newly built dwelling increased from 88.6 sq. m in the second quarter of 2020 to 96.9 sq. m in the same quarter of 2021.

The biggest average useful floor space of a newly built dwelling was recorded in districts Silistra – 205.6 sq. m and Kyustendil - 197.4 sq. m, and the smallest one in Montana - 50.8 sq. m and Vratsa - 74.9 sq. meters.

Figure 4. Total useful floor space and living floor space of newly built dwellings completed by quarters



Methodological notes

The statistical data about the newly built residential buildings and dwellings are prepared based on quarterly reports of the municipal administrations.

In the scope of survey are newly built residential buildings with approved or valid usage license according to Regulation No. 2/31.07.2003 of the Ministry of Regional Development and Public Works.

Living floor space is the floor space of living rooms, bedrooms, recesses for sleeping, dining rooms, cabinets and libraries of scientists and drawing rooms and the space of kitchens with over 4 sq. m floor space. The space of the kitchens with over 4 sq. m floor area was presented separately before 31.12.2018.

Service floor space is the floor space of rooms and kitchens with less than 4 square meters floor space, vestibules with a portal or other screen, corridors, bathrooms, toilets, larders, hanging closets, other service rooms such as drying-rooms, laundries or balconies regardless their space.

The useful floor space of dwelling is a sum of the living-floor-space and the service floor space.

The average useful floor space is a ratio between the useful floor space and the number of dwellings.

Annex

Table 1

Newly built residential buildings and dwellings completed in the second quarter of 2021¹

Districts	Newly completed residential buildings and dwellings - in numbers		Useful floor area of newly built dwellings - sq. m		
	Buildings	Dwellings	Total	Living floor space, incl. kitchens over 4 sq. m	Service floor space, incl. kitchens under 4 sq. m
Total	838	4058	393231	302442	90789
Blagoevgrad	40	150	14299	11855	2444
Burgas	96	608	58069	41426	16643
Varna	103	789	62820	44047	18773
Veliko Tarnovo	14	83	10470	8159	2311
Vidin	-	-	-	-	-
Vratsa	7	34	2545	2406	139
Gabrovo	12	35	3451	2190	1261
Dobrich	32	93	7460	4943	2517
Kardzhali	10	60	6365	5146	1219
Kyustendil	7	7	1382	850	532
Lovech	7	7	1223	778	445
Montana	2	6	305	243	62
Pazardzhik	24	94	8757	6310	2447
Pernik	8	8	784	632	152
Pleven	11	13	1759	1083	676
Plovdiv	108	302	32304	25988	6316
Razgrad	8	8	856	519	337
Ruse	22	64	8723	5454	3269
Silistra	6	8	1645	1180	465
Sliven	19	60	5614	3795	1819
Smolyan	10	15	1367	1101	266
Sofia	84	108	15257	11648	3609
Sofia (stolitsa)	112	1175	115139	98701	16438
Stara Zagora	30	195	16896	12917	3979
Targovishte	4	8	903	463	440
Haskovo	36	63	7366	5786	1580
Shumen	18	45	5355	3183	2172
Yambol	8	20	2117	1639	478

¹Preliminary data.

Table 2

Newly built residential buildings by type of building

(Number)

	2018				2019				2020				2021*	
	I quarter	II quarter	III quarter	IV quarter	I quarter	II quarter	III quarter	IV quarter	I quarter	II quarter	III quarter	IV quarter	I quarter	II quarter
Total	570	572	460	722	665	662	788	937	792	757	899	928	925	838
Houses	451	420	334	573	490	504	576	693	553	530	659	667	672	617
Blocks of flats	65	89	91	91	111	98	125	183	169	170	161	184	167	139
Mixed buildings	21	24	8	19	31	27	33	36	34	34	30	26	37	45
Hostels	-	-	-	-	1	2	1	1	1	2	2	1	-	-
Country houses	32	37	27	39	29	30	51	24	35	21	46	49	45	36
Buildings of institutional households	1	2	-	-	3	1	2	-	-	-	1	1	4	1

* Preliminary data.