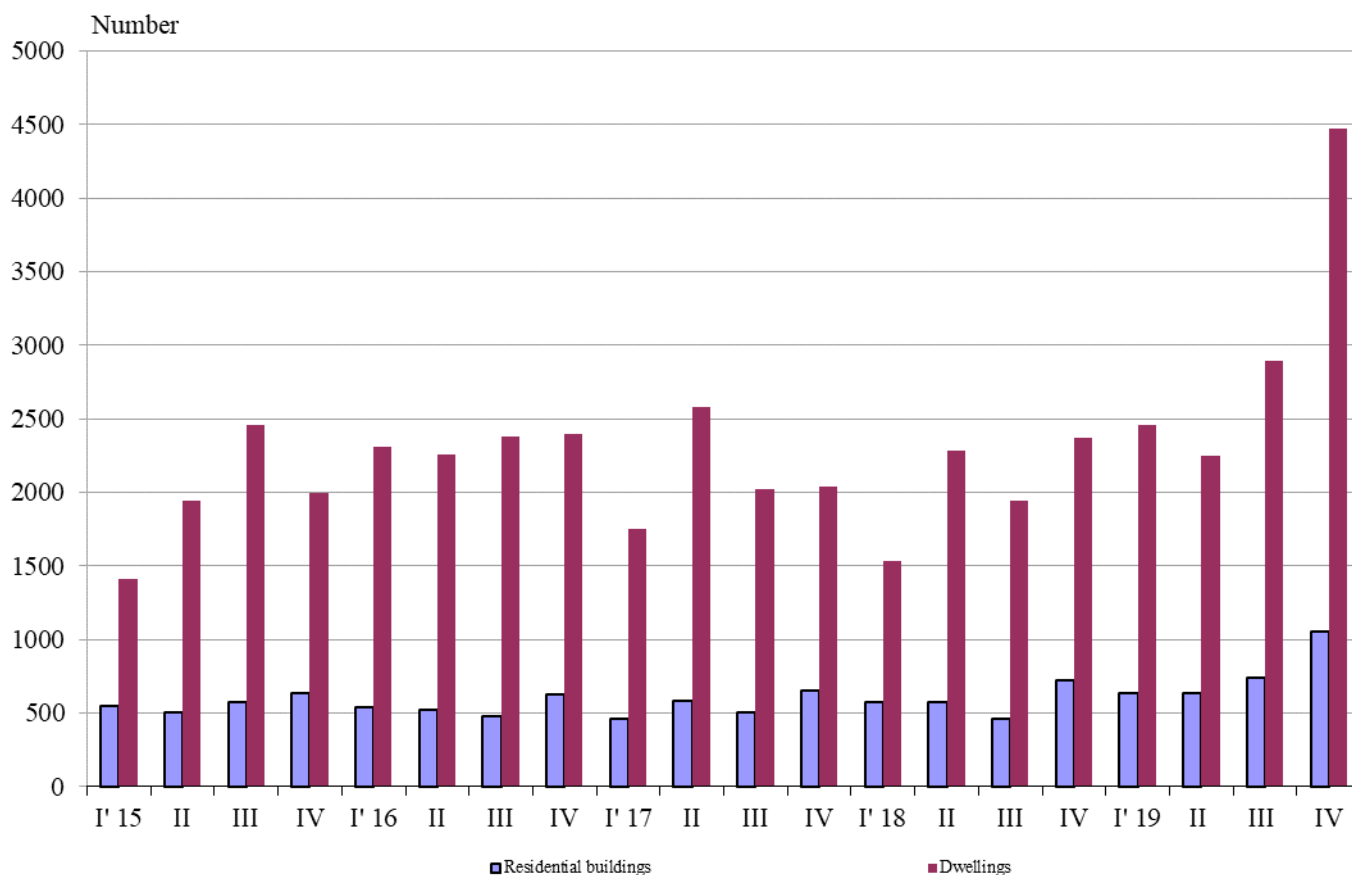


NEWLY BUILT RESIDENTIAL BUILDINGS AND DWELLINGS COMPLETED IN THE FOURTH QUARTER OF 2019 (PRELIMINARY DATA)

According to preliminary data of the National Statistical Institute in the fourth quarter of 2019 the number of newly built residential buildings was 1 057 and the newly built dwellings in them were 4 474 (Annex, Table 1). Compared to the fourth quarter of 2018 the buildings were by 335 more (or by 46.4%), and the newly built dwellings in them increased by 2 101 or by 88.5% (Figure 1).

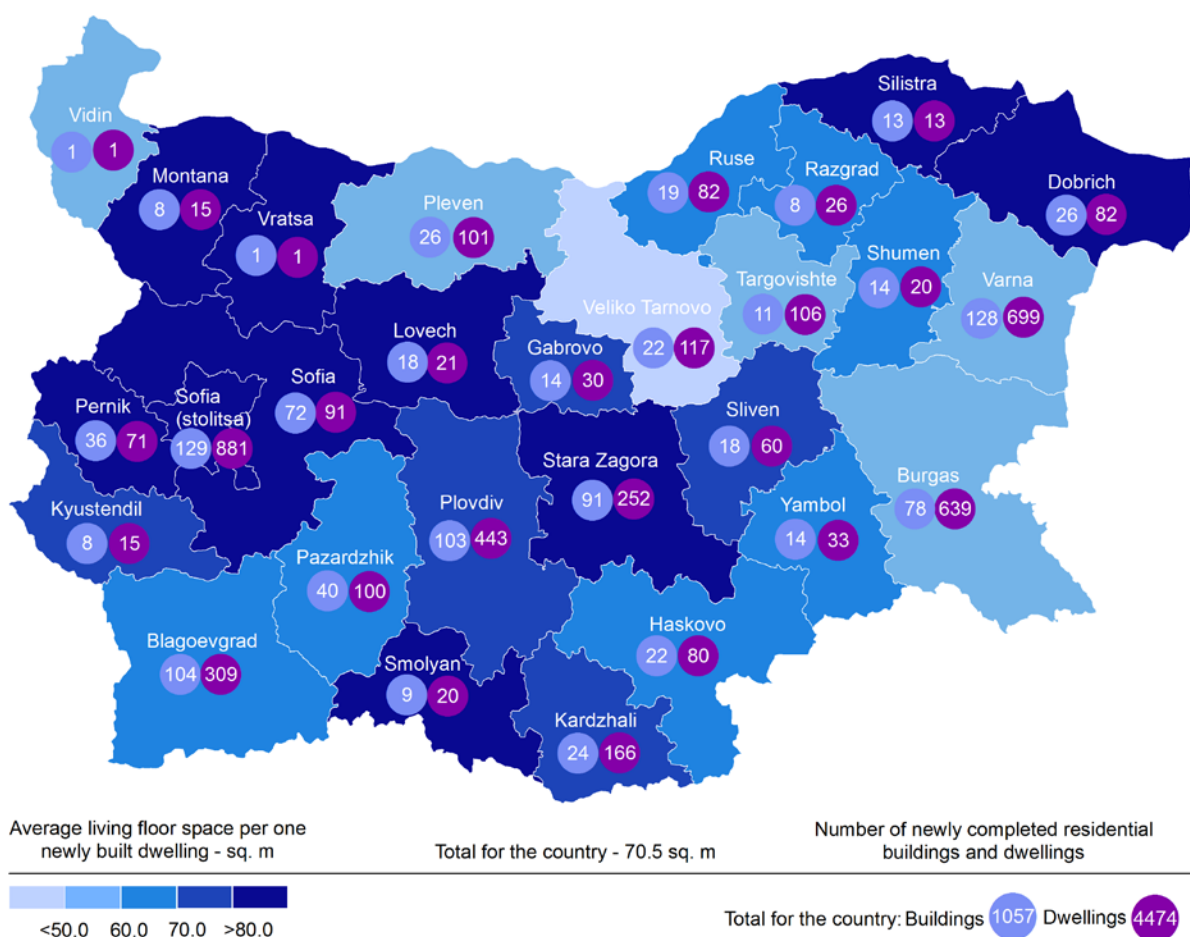
Figure 1. Newly built residential buildings and dwellings completed by quarters



In the fourth quarter of 2019, 76.0% of the newly built residential buildings were with steel-concrete construction, 19.9% with solid structure, 3.5% with 'other' and 0.6% with panel. Highest is the relative share of houses (75.2%), followed by blocks of flats (18.2%). As compared to the fourth quarter of 2018 the number of newly built houses, blocks of flats and mixed buildings rose, while the number of newly built country houses dropped (Annex, Table 2).

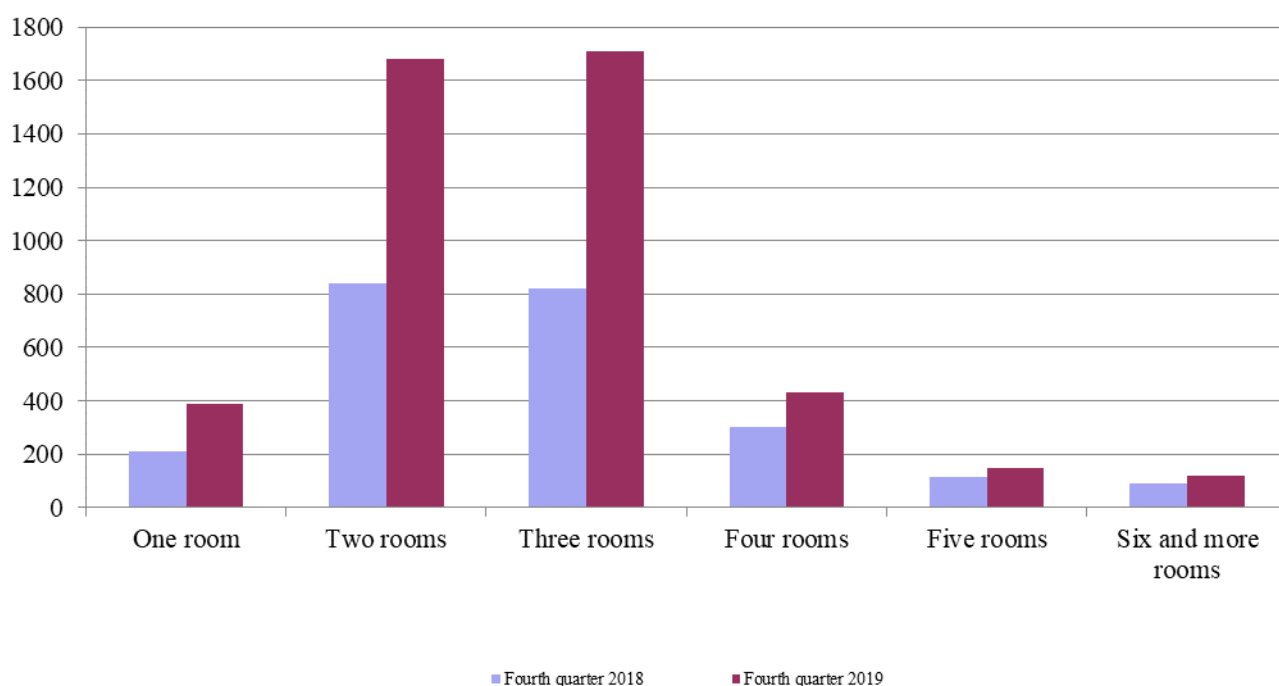
Highest is the number of residential buildings built in district Sofia (stolitsa) - 129 residential buildings with 881 dwellings, followed by Varna - 128 residential buildings with 699 dwellings, and Blagoevgrad - 104 buildings with 309 dwellings in them (Figure 2).

Figure 2. Newly built residential buildings and dwellings completed in fourth quarter of 2019 by districts



Highest is the number of newly built dwellings with three rooms (38.2%), followed by the number of those with two rooms (37.5%) and lowest is the number of dwellings with six and more rooms - 2.7% (Figure 3).

Figure 3. Newly built dwellings completed by number of rooms

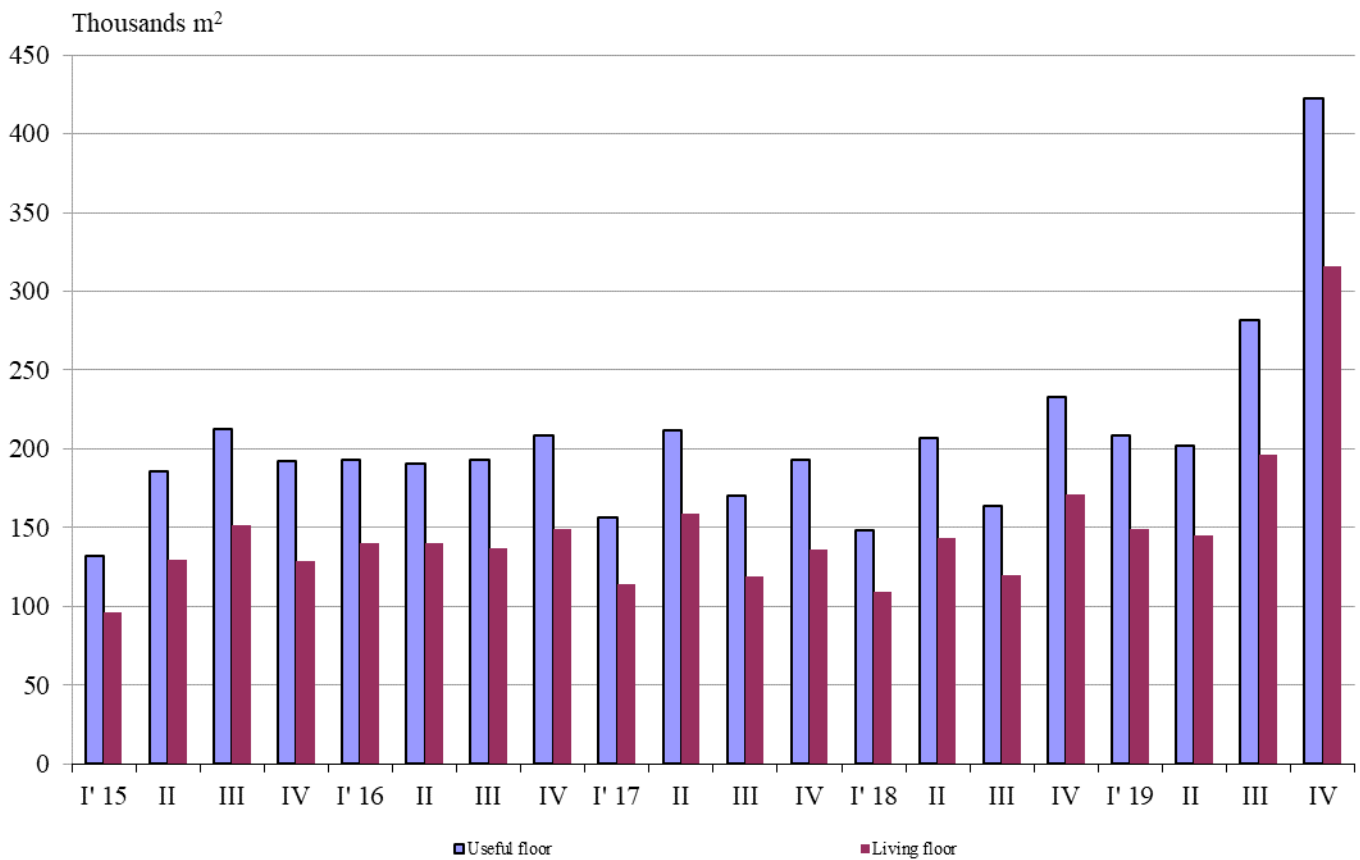


In the fourth quarter of 2019 **the total useful space** of newly built dwellings was 422.4 thousand sq. m or by 81.4% more, compared to the same quarter of 2018, and **the living floor space** increased (by 84.7%) to 315.6 thousand sq. m (Figure 4).

The **average useful floor space** of a newly built dwelling decreased from 98.1 sq. m in the fourth quarter of 2018 to 94.4 sq. m in the same quarter of 2019.

The biggest average useful floor space of a newly built dwelling was recorded in districts Vratsa - 158.0 sq. m and Silistra - 137.2 sq. m, and the smallest one in Veliko Tarnovo - 55.2 sq. m and Pleven - 71.2 sq. meters.

Figure 4. Total useful floor space and living floor space of newly built dwellings completed by quarters



Methodological notes

The statistical data about the newly built residential buildings and dwellings are prepared based on quarterly reports of the municipal administrations.

In the scope of survey are newly built residential buildings with approved or valid usage license according to Regulation No. 2/31.07.2003 of the Ministry of Regional Development and Public Works.

Living floor space is the floor space of living rooms, bedrooms, recesses for sleeping, dining rooms, cabinets and libraries of scientists and drawing rooms and the space of kitchens with over 4 sq. m floor space. The space of the kitchens with over 4 sq. m floor area was presented separately before 31.12.2018.

Service floor space is the floor space of rooms and kitchens with less than 4 square meters floor space, vestibules with a portal or other screen, corridors, bathrooms, toilets, larders, hanging closets, other service rooms such as drying-rooms, laundries or balconies regardless their space.

The useful floor space of dwelling is a sum of the living-floor-space and the service floor space.

The average useful floor space is a ratio between the useful floor space and the number of dwellings.

Annex

Table 1

Newly built residential buildings and dwellings completed in the fourth quarter of 2019¹

Districts	Newly completed residential buildings and dwellings - in numbers		Useful floor area of newly built dwellings - sq. m		
	Buildings	Dwellings	Total	Living floor space, incl. kitchens over 4 sq. m	Service floor space, incl. kitchens under 4 sq. m
Total	1057	4474	422360	315581	106779
Blagoevgrad ²	104	309	28302	21128	7174
Burgas	78	639	47274	33051	14223
Varna	128	699	55530	36934	18596
Veliko Tarnovo	22	117	6456	5350	1106
Vidin	1	1	94	51	43
Vratsa	1	1	158	135	23
Gabrovo	14	30	3202	2224	978
Dobrich	26	82	9228	6823	2405
Kardzhali	24	166	14925	12526	2399
Kyustendil	8	15	1431	1108	323
Lovech	18	21	2536	1755	781
Montana	8	15	1860	1267	593
Pazardzhik	40	100	11280	6313	4967
Pernik	36	71	8095	6306	1789
Pleven	26	101	7187	5754	1433
Plovdiv	103	443	42314	31802	10512
Razgrad	8	26	2246	1566	680
Ruse	19	82	8137	5056	3081
Silistra	13	13	1784	1078	706
Sliven	18	60	5567	4227	1340
Smolyan	9	20	2132	1628	504
Sofia	72	91	11786	8219	3567
Sofia (stolitsa)	129	881	99079	83636	15443
Stara Zagora ²	91	252	27319	23222	4097
Targovishte	11	106	10101	5662	4439
Haskovo	22	80	9815	5378	4437
Shumen	14	20	1614	1203	411
Yambol	14	33	2908	2179	729

¹ Preliminary data.

² Count of the newly built residential buildings and dwellings for the fourth quarter of 2019 contains also newly built residential buildings and dwellings built during the previous quarters.

Table 2

Newly built residential buildings by type of building

(Number)

	2017				2018				2019*			
	I quarter	II quarter	III quarter	IV quarter	I quarter	II quarter	III quarter	IV quarter	I quarter	II quarter	III quarter	IV quarter
Total	462	584	505	654	570	572	460	722	635	632	740	1057
Houses	350	405	366	495	451	420	334	573	469	480	534	795
Blocks of flats	63	102	78	89	65	89	91	91	105	94	122	192
Mixed buildings	24	16	17	28	21	24	8	19	29	25	32	42
Hostels	-	-	-	-	-	-	-	-	1	2	1	1
Country houses	24	61	44	40	32	37	27	39	29	30	49	26
Buildings of institutional households	1	-	-	2	1	2	-	-	2	1	2	1

*Preliminary data.