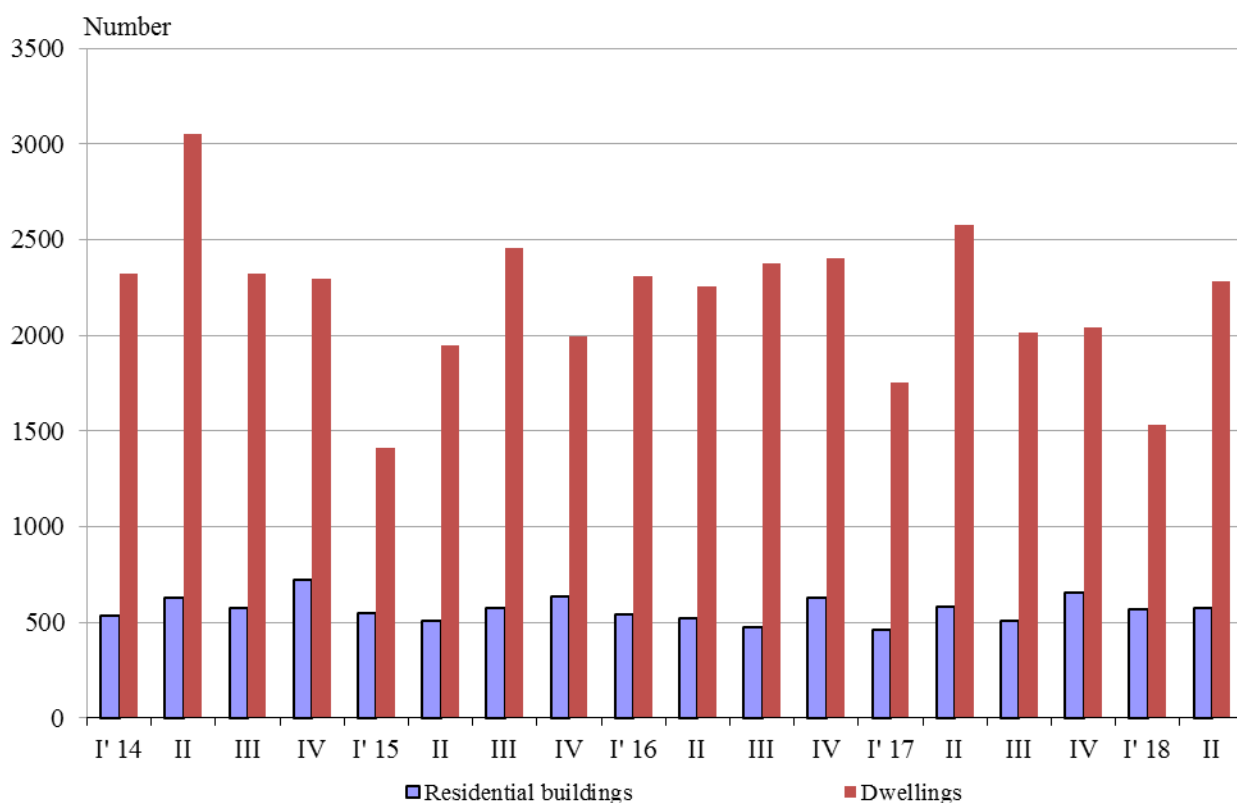




NEWLY BUILT RESIDENTIAL BUILDINGS AND DWELLINGS COMPLETED IN THE SECOND QUARTER OF 2018 (PRELIMINARY DATA)

According to preliminary data of the National Statistical Institute in the second quarter of 2018 the number of newly built residential buildings was 573 and the newly built dwellings in them were 2 285 (Annex, Table 1). Compared to the second quarter of 2017 the buildings were by 11 less (or by 1.9%), and the newly built dwellings in them decreased by 290 or by 11.3% (Figure 1).

Figure 1. Newly built residential buildings and dwellings completed by quarters

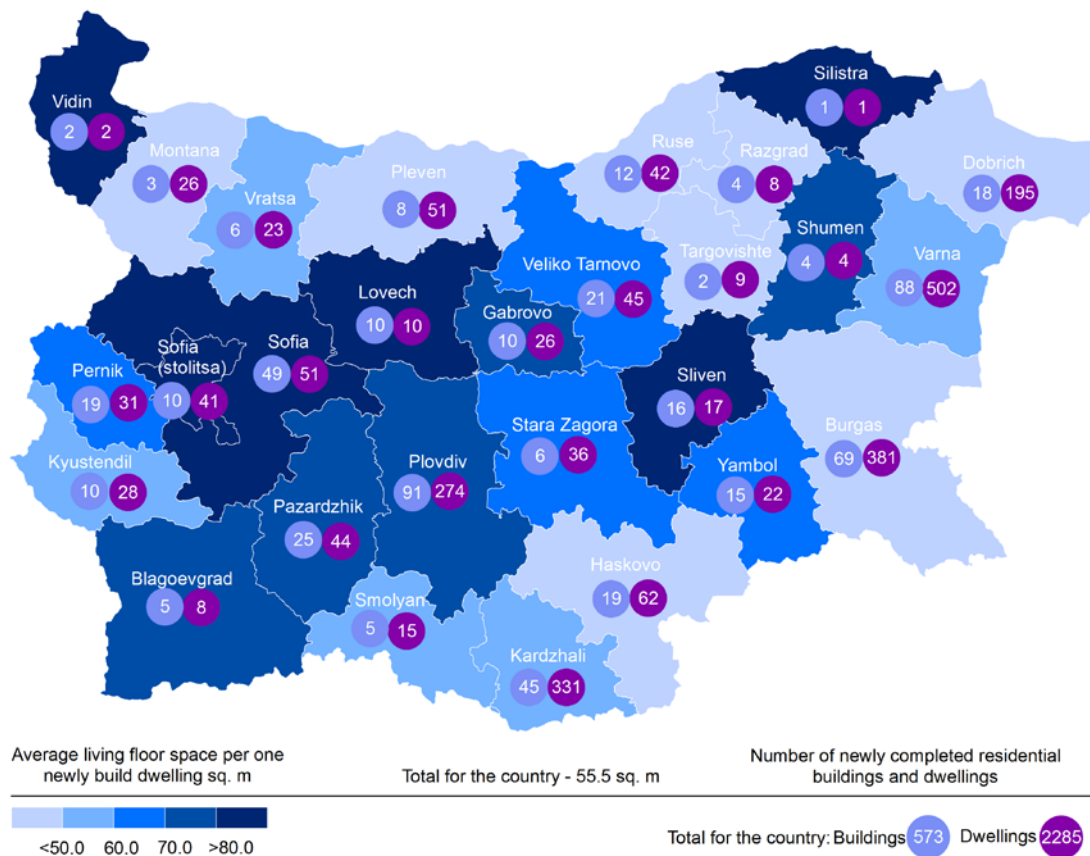


In the second quarter of 2018, 74.2% of the newly built residential buildings were with steel-concrete construction, 21.8% with solid structure, 3.5% with 'other' and 0.5% with panel. Highest is the relative share of houses (73.5%) followed by blocks of flats (15.5%). As compared to the second quarter of 2017 the number of newly built houses and mixed buildings rose, while the number of newly built blocks of flats and country houses dropped (Annex, Table 2).

Highest is the number of residential buildings built in district Plovdiv - 91 buildings with 274 dwellings in them, followed by Varna - 88 residential buildings with 502 dwellings and Burgas - 69 residential buildings with 381 dwellings (Figure 2).



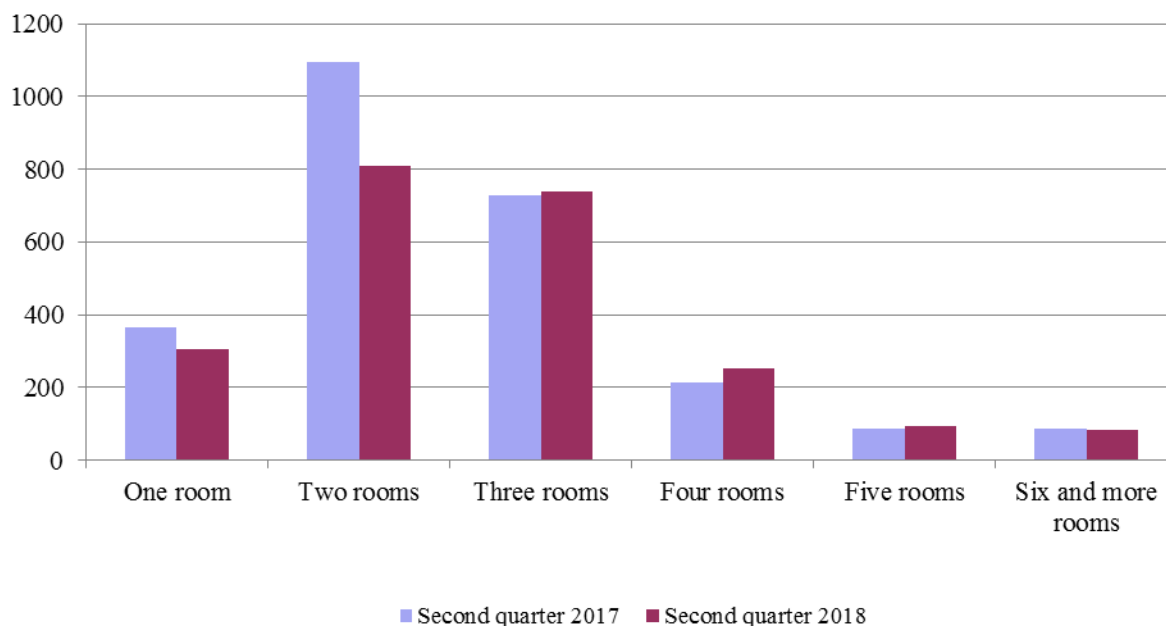
Figure 2. Newly built residential buildings and dwellings completed in second quarter of 2018 by districts



Highest is the number of newly built dwellings with two rooms (35.5%), followed by the number of those with three rooms (32.3%) and lowest is the number of dwellings with six and more rooms - 3.7% (Figure 3).



Figure 3. Newly built dwellings completed by number of rooms



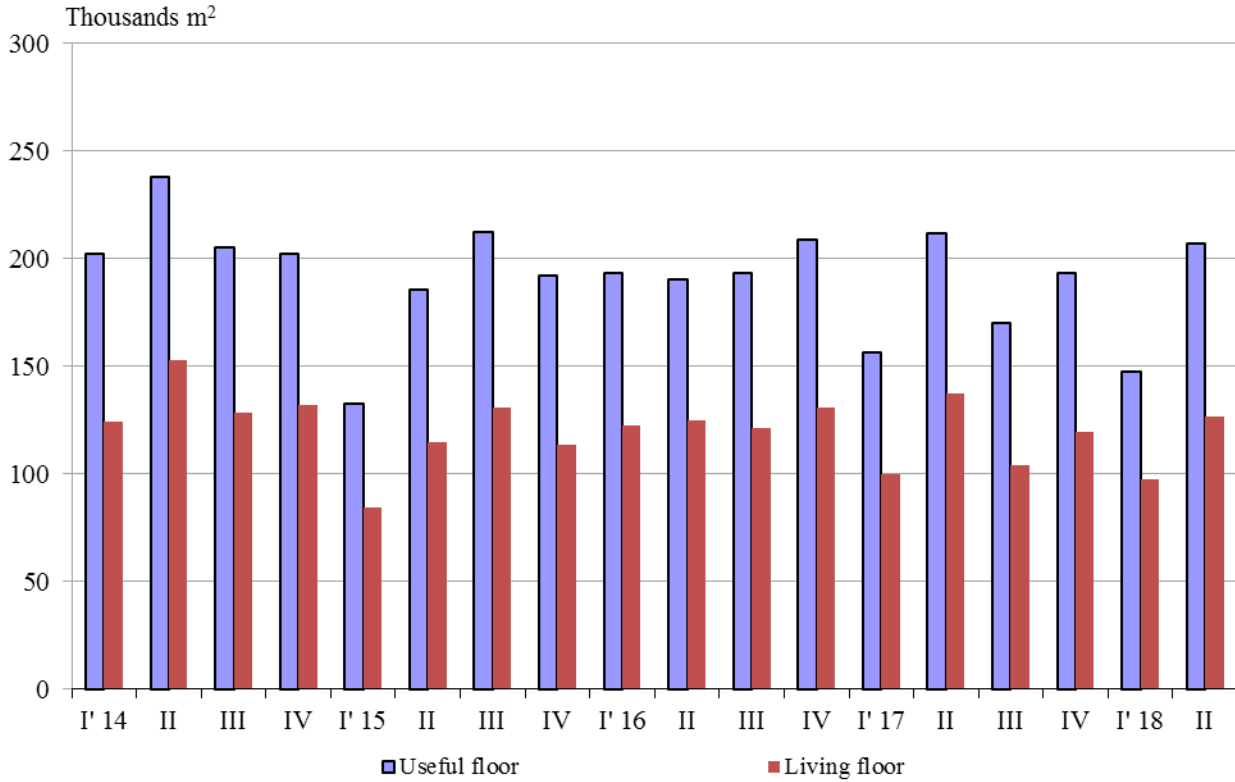
In the second quarter of 2018 **the total useful space** of newly built dwellings was 206.9 thousand sq. m or 2.3% less compared to the same quarter of 2017, **the living floor space** decreased (by 7.6%) to 126.8 thousand sq. m (Figure 4).

The **average useful floor space** of a newly built dwelling increased from 82.2 sq. m in the second quarter of 2017 to 90.5 sq. m in the same quarter of 2018.

The biggest average useful floor space of a newly built dwelling was recorded in districts Vidin - 188.0 sq. m and Lovech - 171.8 sq. m, and the smallest one in Dobrich - 59.1 sq. m and Pleven - 61.7 sq. meters.



Figure 4. Total useful floor space and living floor space of newly built dwellings completed by quarters





Methodological notes

The statistical data about the newly built residential buildings and dwellings are prepared based on quarterly reports of the municipal administrations.

In the scope of survey are newly built residential buildings with approved or valid usage license according to Regulation No. 2/31.07.2003 of the Ministry of Regional Development and Public Works.

Living floor space is the floor space of living rooms, bedrooms, recesses for sleeping, dining rooms, cabinets and libraries of scientists and drawing rooms but does not include the space of kitchens.

Service floor space is the floor space of rooms and kitchens with less than 4 square meters floor space, vestibules with a portal or other screen, corridors, bathrooms, toilets, larders, hanging closets, other service rooms such as drying-rooms, laundries or balconies regardless their space. The space of kitchens with over 4 sq. m floor space is shown separately.

The useful floor space of dwelling is a sum of the living-floor-space, the service floor space and the space of the kitchens.

The average useful floor space is a ratio between the useful floor space and the number of dwellings.

Annex

Table 1

Newly build residential buildings and dwellings completed in the second quarter of 2018¹

Districts	Newly completed residential buildings and dwellings - in numbers		Useful floor area of newly built dwellings - sq. m			
	Buildings	Dwellings	Total	Living floor space	Service floor space	Area of kitchens
Total	573	2285	206864	126762	63392	16710
Blagoevgrad	5	8	1062	619	252	191
Burgas	69	381	31420	18867	10122	2431
Varna	88	502	41580	27051	12968	1561
Veliko Tarnovo	21	45	4376	2997	1078	301
Vidin	2	2	376	186	171	19
Vratsa	6	23	1890	1178	571	141
Gabrovo	10	26	2701	1864	626	211
Dobrich	18	195	11524	7549	3474	501
Kardzhali	45	331	30454	16640	9919	3895
Kyustendil	10	28	1936	1505	255	176
Lovech	10	10	1718	1128	457	133
Montana	3	26	1791	849	700	242
Pazardzhik	25	44	5546	3192	1632	722
Pernik	19	31	4898	1885	2494	519
Pleven	8	51	3149	2177	665	307
Plovdiv	91	274	28373	19860	6298	2215
Razgrad	4	8	773	378	291	104
Ruse	12	42	3623	1470	1749	404
Silistra	1	1	169	108	43	18
Sliven	16	17	2790	1591	974	225
Smolyan	5	15	1460	812	452	196
Sofia	49	51	6821	4148	1940	733
Sofia (stolitsa)	10	41	5946	3326	2421	199
Stara Zagora	6	36	3159	2177	507	475
Targovishte	2	9	1222	425	797	-
Haskovo	19	62	5303	3081	1744	478
Shumen	4	4	563	311	221	31
Yambol	15	22	2241	1388	571	282

¹ Preliminary data.



Table 2

Newly built residential buildings by type of building

	2016				2017				2018 ¹	
	I quarter	II quarter	III quarter	IV quarter	I quarter	II quarter	III quarter	IV quarter	I quarter	II quarter
Total	541	519	476	625	462	584	505	654	565	573
Houses	382	376	322	465	350	405	366	495	447	421
Blocks of flats	95	80	104	95	63	102	78	89	65	89
Mixed buildings	20	22	14	35	24	16	17	28	20	24
Hostels	1	2	-	2	-	-	-	-	-	-
Country houses	40	38	34	28	24	61	44	40	32	37
Buildings of institutional households	3	1	2	-	1	-	-	2	1	2

¹Preliminary data.