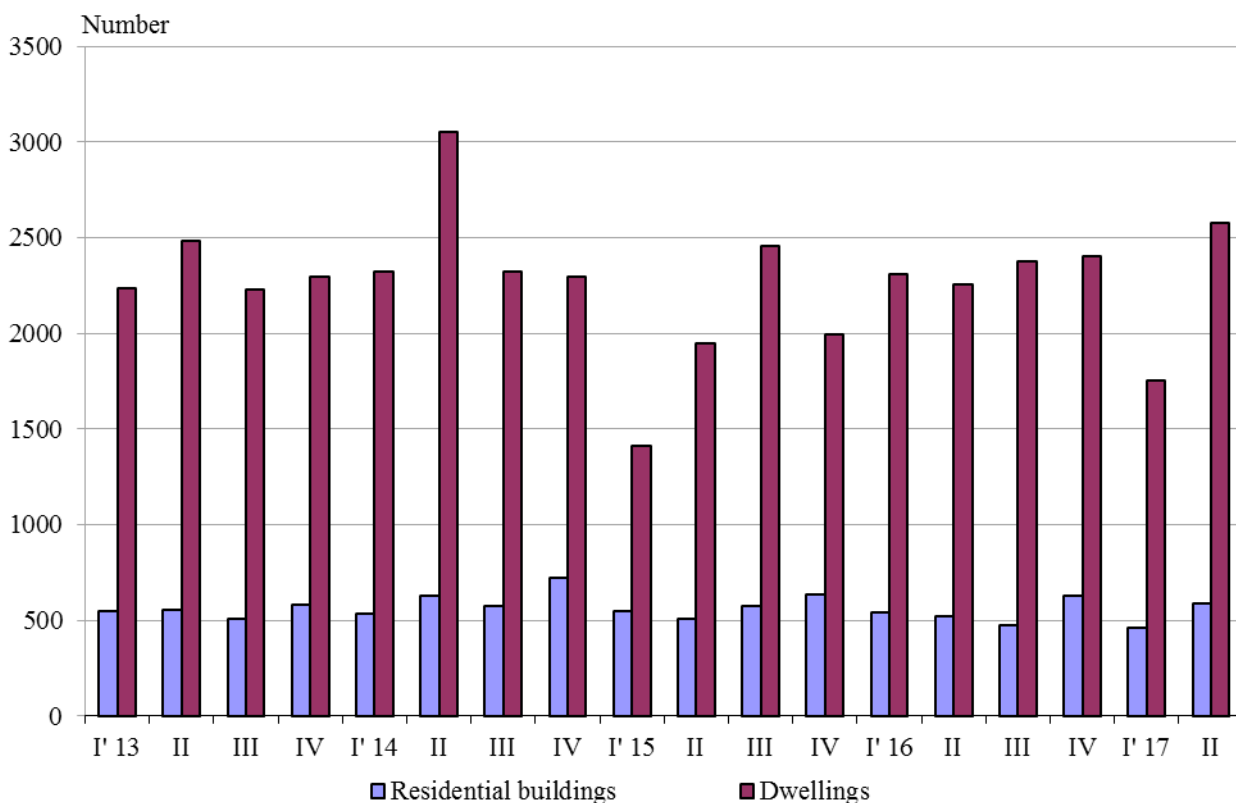




## NEWLY BUILT RESIDENTIAL BUILDINGS AND DWELLINGS COMPLETED IN THE SECOND QUARTER OF 2017 (PRELIMINARY DATA)

According to preliminary data of the National Statistical Institute in the second quarter of 2017 the number of newly built residential buildings was 585 and the newly built dwellings in them were 2 576 (Annex, Table 1). Compared to the second quarter of 2016 the buildings were by 66 more (or 12.7%), and the newly built dwellings in them increased by 323 or by 14.3% (Figure 1).

**Figure 1. Newly built residential buildings and dwellings completed by quarters**

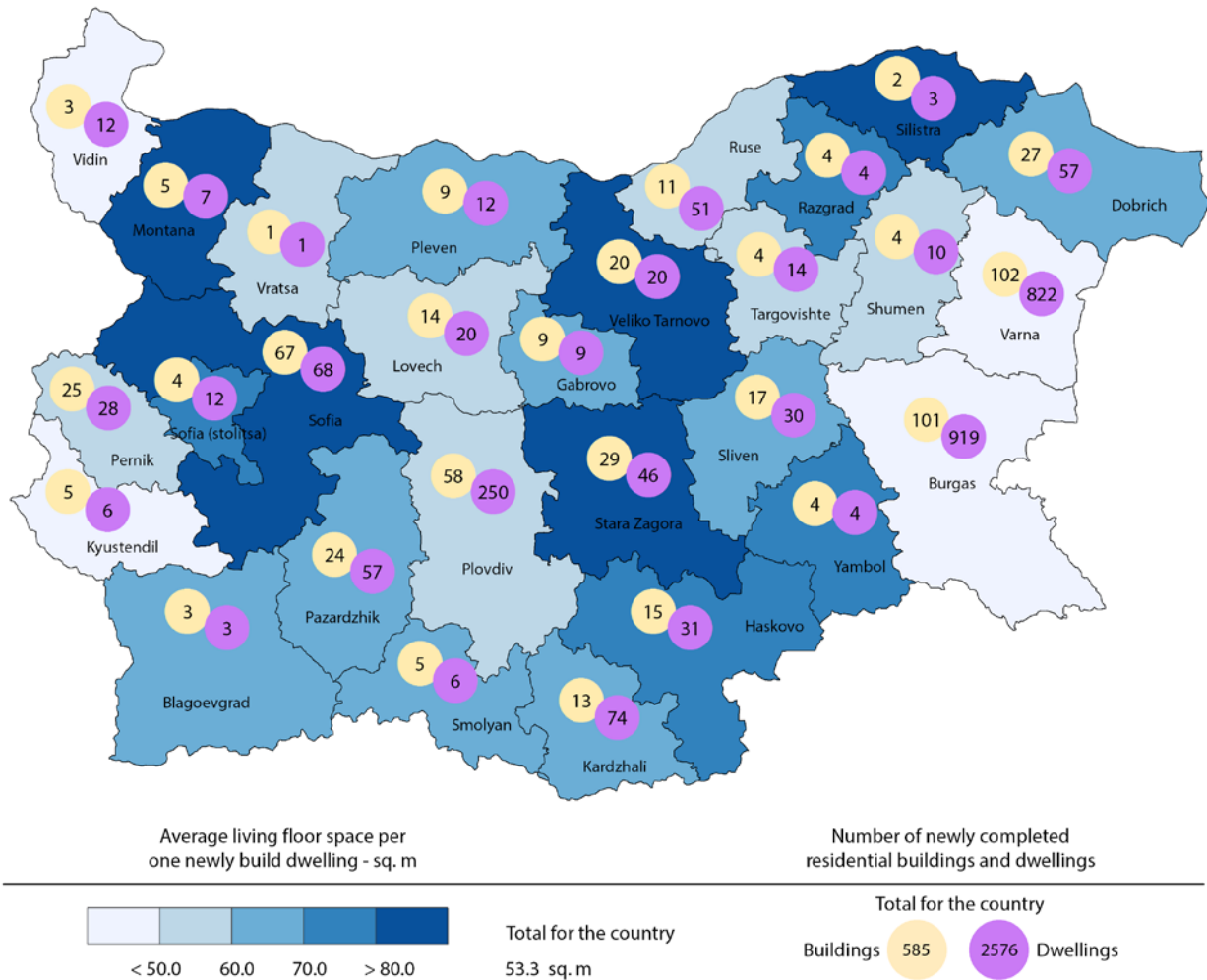


In the second quarter of 2017 74.5% of the newly built residential buildings were with steel-concrete construction, 24.3% with solid structure, 0.7% with 'other' and 0.5% with panel. Highest is the relative share of houses (69.4%) followed by blocks of flats (17.5%). As compared to the second quarter of 2016 the number of newly built houses, blocks of flats and country houses rose, while the number of newly built mixed buildings dropped (Annex, Table 2).

Highest is the number of residential buildings built in district Varna - 102 buildings with 822 dwellings in them, followed by Burgas - 101 residential buildings with 919 dwellings and Sofia - 67 residential buildings with 68 dwellings (Figure 2).



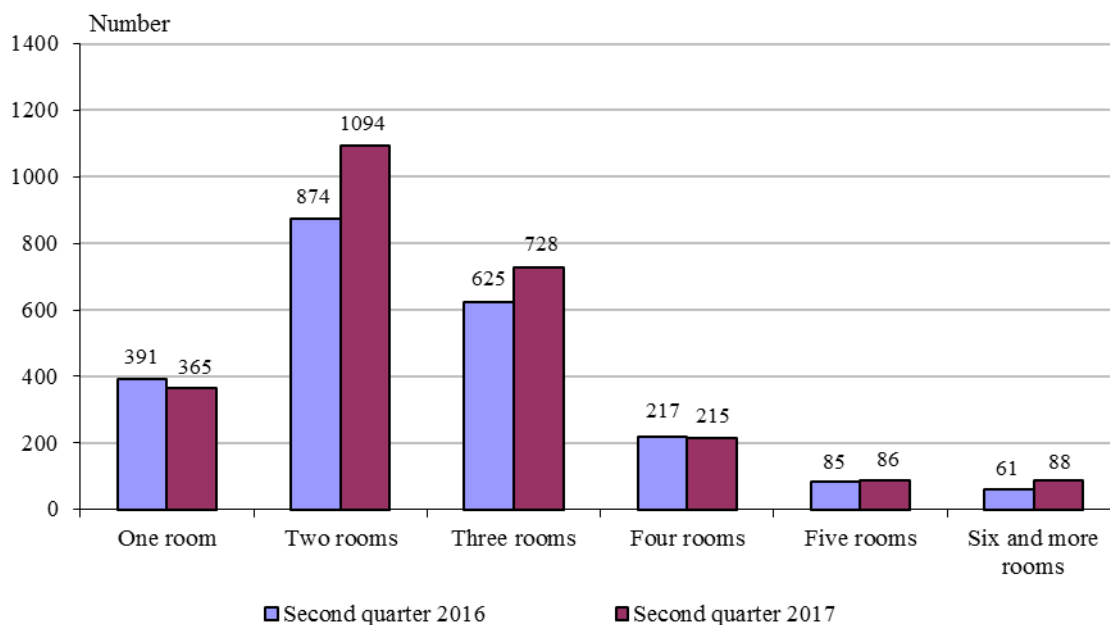
**Figure 2. Newly built residential buildings and dwellings completed in second quarter of 2017 by districts**



Highest is the number of newly built dwellings with two rooms (42.5%), followed by the number of those with three rooms (28.3%) and lowest is the number of dwellings with five rooms - 3.3% (Figure 3).



**Figure 3. Newly built dwellings completed by number of rooms**



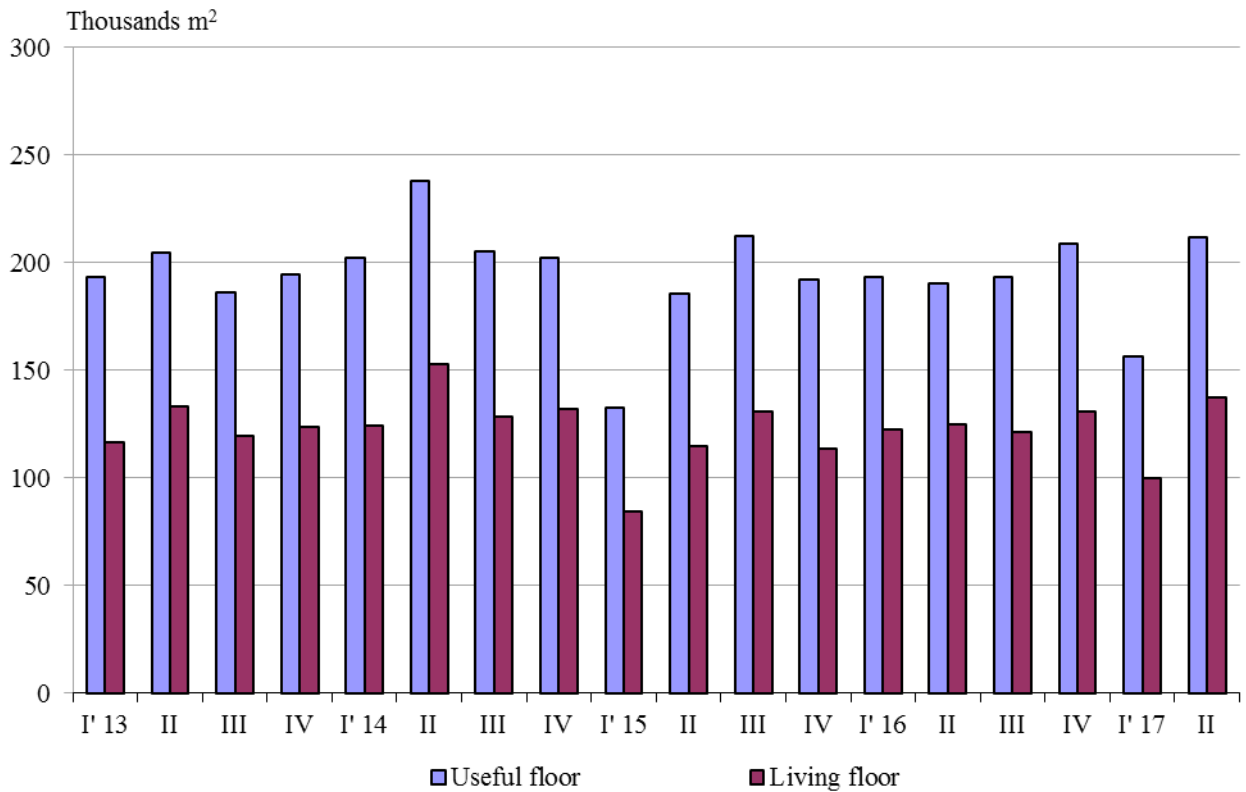
In the second quarter of 2017 **the total useful space** of newly built dwellings was 211.9 thousand sq. m or 11.4% more compared to the same quarter of 2016, **the living floor space** increased (by 10.2%) and reached 137.3 thousand sq. m (Figure 4).

**The average useful floor space** of a newly built dwelling decreased from 84.5 sq. m in the second quarter of 2016 to 82.3 sq. m in the same quarter of 2017.

The biggest average useful floor space of a newly built dwelling was recorded in districts Stara Zagora - 167.8 sq. m and Silistra - 147.7 sq. m, and the smallest one in Varna - 67.5 sq. m and Burgas - 68.4 sq. meters.



**Figure 4. Total useful floor space and living floor space of newly built dwellings completed by quarters**





## Methodological notes

The statistical data about the newly built residential buildings and dwellings are prepared on the basis of quarterly reports of the municipal administrations.

In the scope of survey are newly built residential buildings with approved or valid usage license according to Regulation No. 2/31.07.2003 of the Ministry of Regional Development and Public Works.

**Living floor space** is the floor space of living-rooms, bedrooms, recesses for sleeping, dining-rooms, living-rooms, cabinets and libraries of scientists and drawing-rooms but does not include the space of kitchens.

**Service floor space** is the floor space of rooms and kitchens with less than 4 square meters floor space, vestibules with a portal or other screen, corridors, bathrooms, toilets, larders, hanging closets, other service rooms such as drying-rooms, laundries or balconies regardless their space. The space of kitchens with over 4 sq. m floor space is shown separately.

**The useful floor space** of dwelling is a sum of the living-floor-space, the service floor space and the space of the kitchens.

**The average useful floor space** is a ratio between the useful floor space and the number of dwellings.



## Annex

**Table 1**

### Newly build residential buildings and dwellings completed in the second quarter of 2017<sup>1</sup>

Districts	Newly completed residential buildings and dwellings - in numbers		Useful floor area of newly built dwellings - sq. m			
	Buildings	Dwellings	Total	Living floor space	Service floor space	Area of kitchens
<b>Total</b>	<b>585</b>	<b>2576</b>	<b>211924</b>	<b>137334</b>	<b>53046</b>	<b>21544</b>
Blagoevgrad	3	3	317	203	78	36
Burgas	101	919	62844	39692	16020	7132
Varna	102	822	55444	39661	10320	5463
Veliko Tarnovo	20	20	2819	1744	853	222
Vidin	3	12	1037	582	351	104
Vratsa	1	1	80	52	19	9
Gabrovo	9	9	1005	555	369	81
Dobrich	27	57	7130	3656	2512	962
Kardzhali	13	74	7630	4699	1932	999
Kyustendil	5	6	572	283	224	65
Lovech	14	20	1966	1153	549	264
Montana	5	7	1007	664	259	84
Pazardzhik	24	57	6189	3783	1760	646
Pernik	25	28	3127	1624	1062	441
Pleven	9	12	1208	754	345	109
Plovdiv	58	250	23620	14839	6920	1861
Razgrad	4	4	512	306	152	54
Ruse	11	51	6359	2866	2945	548
Silistra	2	3	443	248	169	26
Sliven	17	30	3254	2025	994	235
Smolyan	5	6	559	371	113	75
Sofia	67	68	9728	5903	2556	1269
Sofia (stolitsa)	4	12	1634	866	621	147
Stara Zagora	29	46	7721	6967	485	269
Targovishte	4	14	1255	766	479	10
Haskovo	15	31	3124	2198	625	301
Shumen	4	10	885	573	221	91
Yambol	4	4	455	301	113	41

<sup>1</sup> Preliminary data.



**Table 2**

**Newly built residential buildings by type of building**

(Number)

	2015				2016				2017 <sup>1</sup>	
	I quarter	II quarter	III quarter	IV quarter	I quarter	II quarter	III quarter	IV quarter	I quarter	II quarter
<b>Total</b>	<b>549</b>	<b>505</b>	<b>577</b>	<b>632</b>	<b>541</b>	<b>519</b>	<b>476</b>	<b>625</b>	<b>462</b>	<b>585</b>
Houses	415	334	400	462	382	376	322	465	350	406
Blocks of flats	70	76	82	86	95	80	104	95	63	102
Mixed buildings	23	24	26	33	20	22	14	35	24	16
Hostels	1	1	13	1	1	2	-	2	-	-
Country houses	39	70	50	49	40	38	34	28	24	61
Buildings of institutional households	1	-	6	1	3	1	2	-	1	-

<sup>1</sup> Preliminary data.