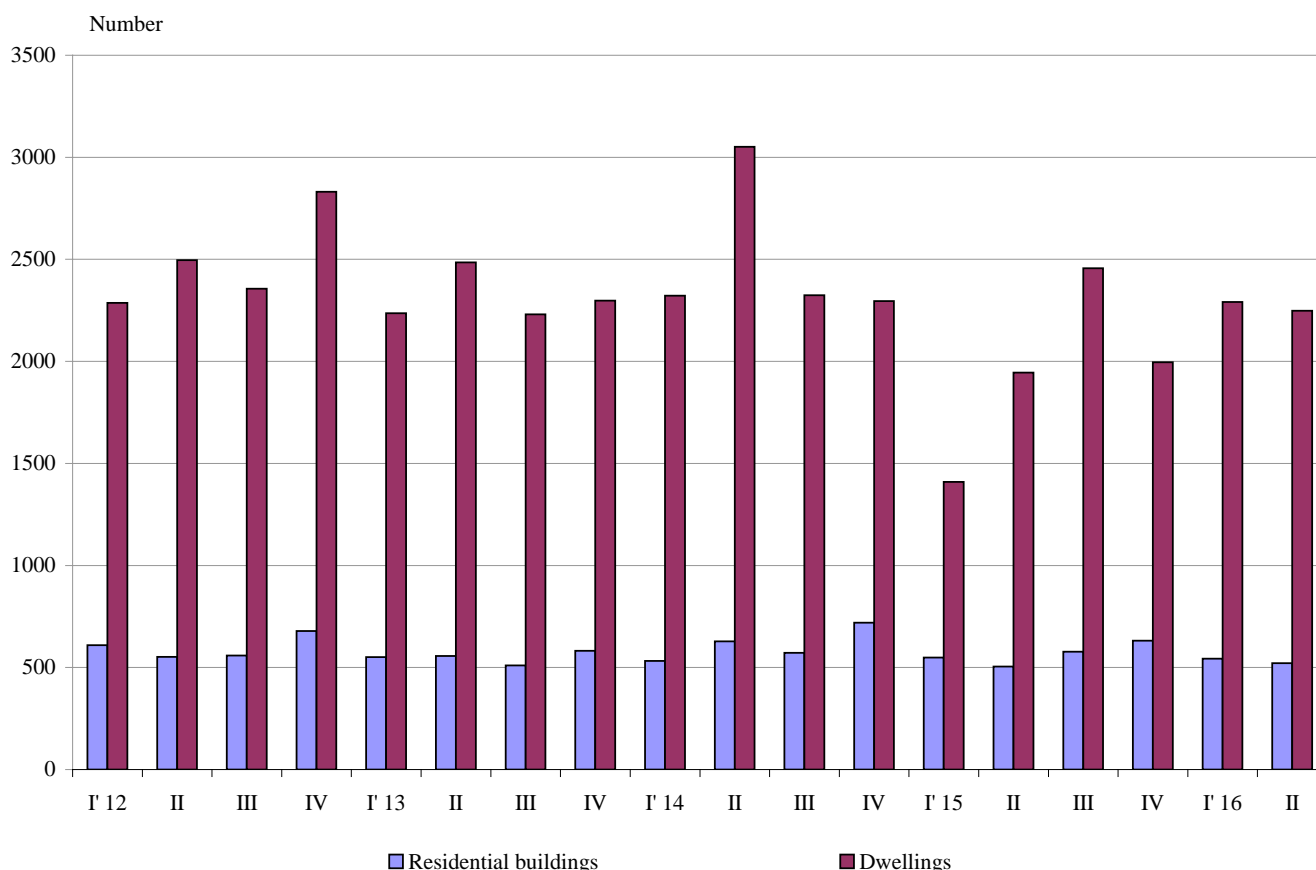




NEWLY BUILT RESIDENTIAL BUILDINGS AND DWELLINGS COMPLETED IN THE SECOND QUARTER OF 2016 (PRELIMINARY DATA)

According to preliminary data of the National Statistical Institute in the second quarter of 2016 the number of newly built residential buildings was 521 and the newly built dwellings in them were 2 248 (Annex, Table 1). Compared to the second quarter of 2015 the buildings were 16 more (or 3.2%), and the newly built dwellings in them increased by 303 or by 15.6% (Figure 1).

Figure 1. Newly built residential buildings and dwellings completed by quarters

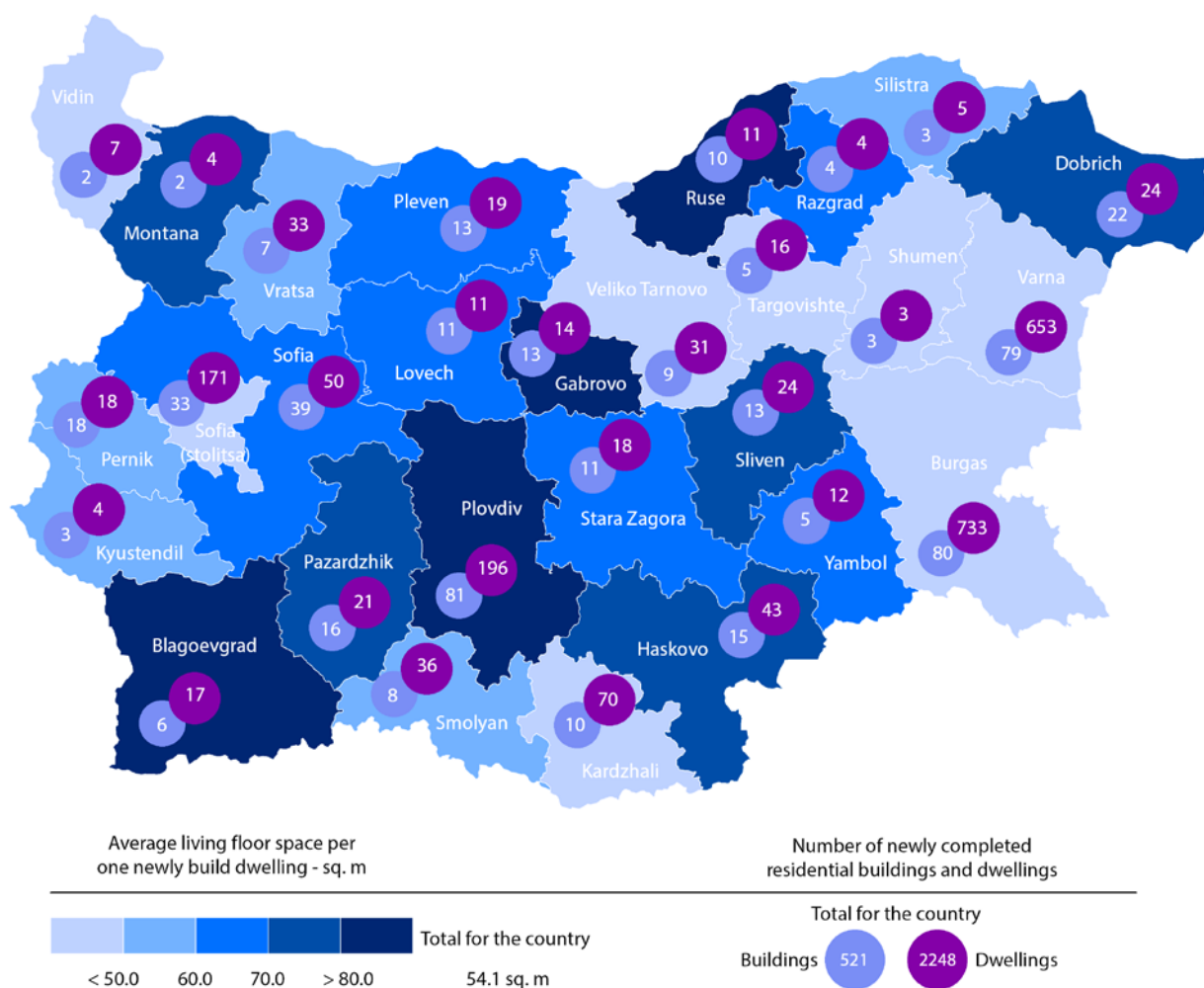


In the second quarter of 2016 69.1% of the newly built residential buildings were with steel-concrete construction, 28.2% with solid structure, 2.5% with 'other' and 0.2% with panel. Highest is the relative share of houses (72.6%) followed by blocks of flats (15.3%). As compared to the second quarter of 2015 the number of newly built houses and blocks of flats rose, while the number of newly built country houses and mixed buildings dropped (Annex, Table 2).



Highest is the number of residential buildings built in district Plovdiv - 81 buildings with 196 dwellings in them, followed by Burgas - 80 residential buildings with 733 dwellings and Varna - 79 residential buildings with 653 dwellings (Figure 2).

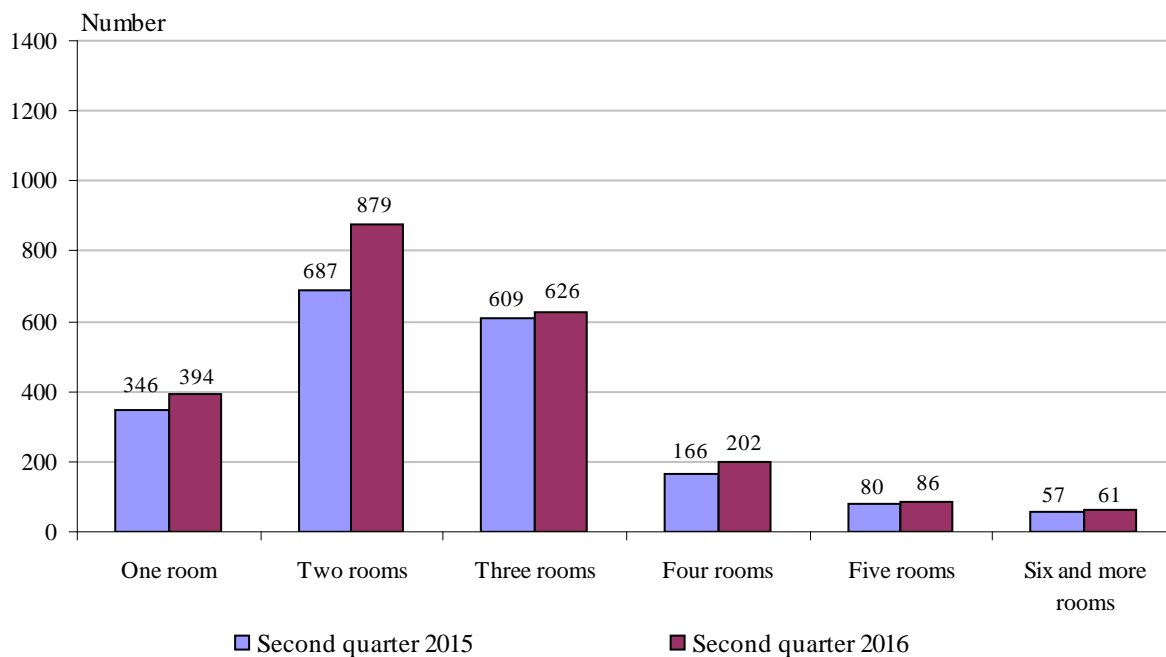
Figure 2. Newly built residential buildings and dwellings completed in second quarter of 2016 by districts



Highest is the number of newly built dwellings with two rooms (39.1%), followed by the number of those with three rooms (27.9%) and lowest is the number of dwellings with six and more rooms - 2.7% (Figure 3).



Figure 3. Newly built dwellings completed by number of rooms



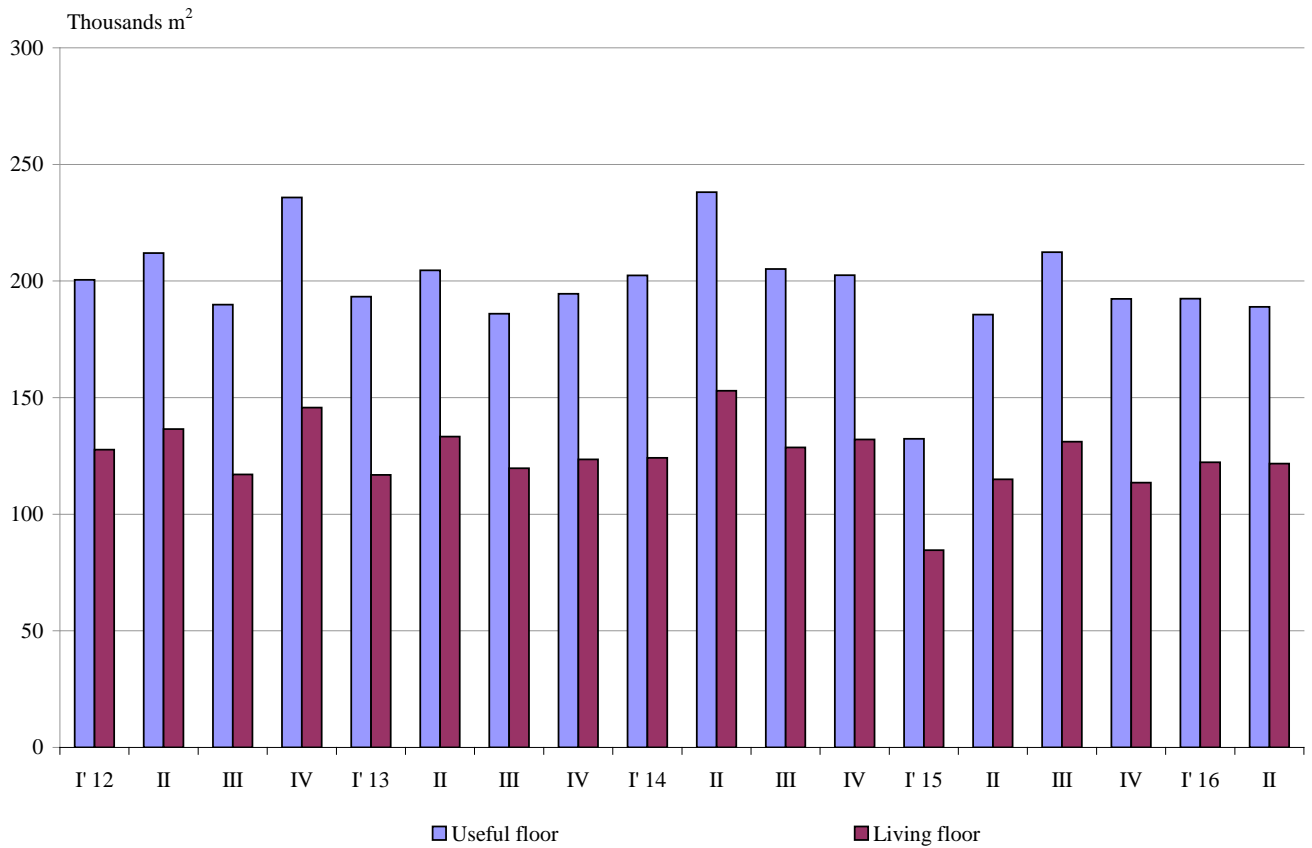
In the second quarter of 2016 **the total useful space** of newly built dwellings was 189.0 thousand sq. m or 1.8% more compared to the same quarter of 2015, **the living floor** space increased (by 5.8%) and reached 121.7 thousand sq. m (Figure 4).

The average useful floor space of a newly built dwelling decreased from 95.4 sq. m in the second quarter of 2015 to 84.1 sq. m in the same quarter of 2016.

The biggest average useful floor space of a newly built dwelling was recorded in districts Gabrovo - 243.9 sq. m and Plovdiv - 159.5 sq. m, and the smallest one in Veliko Tarnovo - 57.1 sq. m and Burgas - 64.1 sq. meters.



Figure 4. Total useful floor space and living floor space of newly built dwellings completed by quarters





Methodological notes

The statistical data about the newly built residential buildings and dwellings are prepared on the basis of quarterly reports of the municipal administrations.

In the scope of survey are newly built residential buildings with approved or valid usage license according to Regulation № 2/31.07.2003 of the Ministry of Regional Development and Public Works.

Living floor space is the floor space of living-rooms, bedrooms, recesses for sleeping, dining-rooms, living-rooms, cabinets and libraries of scientists and drawing-rooms but does not include the space of kitchens.

Service floor space is the floor space of rooms and kitchens with less than 4 square meters floor space, vestibules with a portal or other screen, corridors, bathrooms, toilets, larders, hanging closets, other service rooms such as drying-rooms, laundries or balconies regardless their space. The space of kitchens with over 4 sq. m floor space is shown separately.

The useful floor space of dwelling is a sum of the living-floor-space, the service floor space and the space of the kitchens.

The average useful floor space is a ratio between the useful floor space and the number of dwellings.

Annex

Table 1

Newly build residential buildings and dwellings completed in the second quarter of 2016¹

Districts	Newly completed residential buildings and dwellings - in numbers		Useful floor area of newly built dwellings - sq. m			
	Buildings	Dwellings	Total	Living floor space	Service floor space	Area of kitchens
Total	521	2248	188951	121665	51678	15608
Blagoevgrad	6	17	2167	1933	125	109
Burgas	80	733	46949	29891	11905	5153
Varna	79	653	44461	29714	12925	1822
Veliko Tarnovo	9	31	1769	1153	442	174
Vidin	2	7	629	290	297	42
Vratsa	7	33	2673	1721	638	314
Gabrovo	13	14	3414	1454	1754	206
Dobrich	22	24	2922	1868	778	276
Kardzhali	10	70	7153	3299	3012	842
Kyustendil	3	4	333	217	102	14
Lovech	11	11	1305	734	417	154
Montana	2	4	467	283	123	61
Pazardzhik	16	21	2878	1583	1042	253
Pernik	18	18	1751	1072	454	225
Pleven	13	19	2513	1292	1057	164
Plovdiv	81	196	31266	21894	7105	2267
Razgrad	4	4	426	260	125	41
Ruse	10	11	1724	993	600	131
Silistra	3	5	374	293	81	0
Sliven	13	24	2611	1681	733	197
Smolyan	8	36	3308	2106	773	429
Sofia	39	50	5572	3419	1427	726
Sofia (stolitsa)	33	171	12305	8407	2782	1116
Stara Zagora	11	18	1880	1228	471	181
Targovishte	5	16	1588	691	809	88
Haskovo	15	43	5012	3269	1309	434
Shumen	3	3	294	149	124	21
Yambol	5	12	1207	771	268	168

¹ Preliminary data.



Table 2

Newly built residential buildings by type of building

	2014				2015				2016 ¹	
	I quarter	II quarter	III quarter	IV quarter	I quarter	II quarter	III quarter	IV quarter	I quarter	II quarter
Total	532	628	572	720	549	505	577	632	543	521
Houses	366	417	412	518	415	334	400	462	384	378
Blocks of flats	75	123	97	89	70	76	82	86	94	80
Mixed buildings	26	40	24	38	23	24	26	33	20	22
Hostels	8	-	1	2	1	1	13	1	1	2
Country houses	47	45	36	72	39	70	50	49	41	38
Buildings of institutional households	10	3	2	1	1	-	6	1	3	1

¹ Preliminary data.