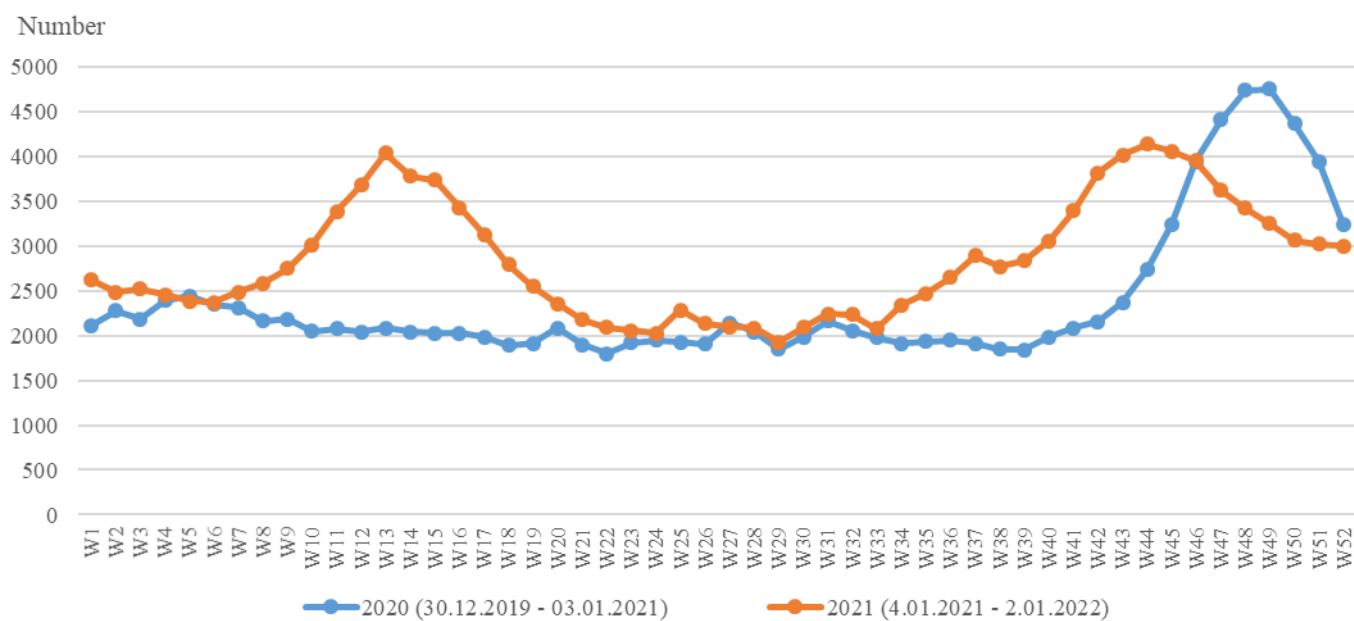


## DEATHS IN THE FOURTH QUARTER OF 2021 (PRELIMINARY DATA)

The number of deaths in the fourth quarter of 2021 (40th – 52nd week) is 45 812 and the crude mortality rate<sup>1</sup> - 26.7‰. Mortality among males (28.2‰) is higher than among females (25.4‰). Compared to the same period of the previous year, the number of deaths has increased by 1841, or by 4.2%. Compared to the third quarter of 2021 mortality decreased by 15 009, or by 49.2%.

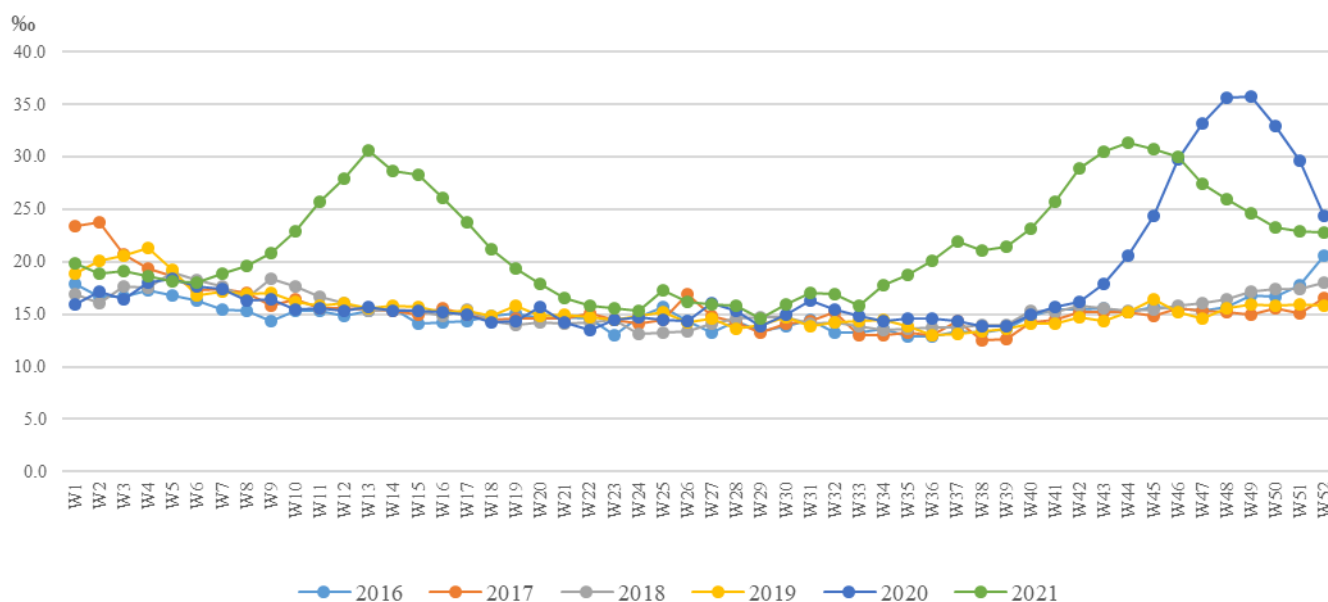
Figure 1. Deaths in Bulgaria by weeks in 2020 and 2021 (40th - 52nd week)



The highest mortality in the fourth quarter of 2021 was registered in the 44th week (November 1 - November 7) - 4139, or 31.4 per 1 000 people of the average annual population. The lowest number of deaths in the fourth quarter of 2021 was in the 52nd week - 3 000 people, or 22.8‰.

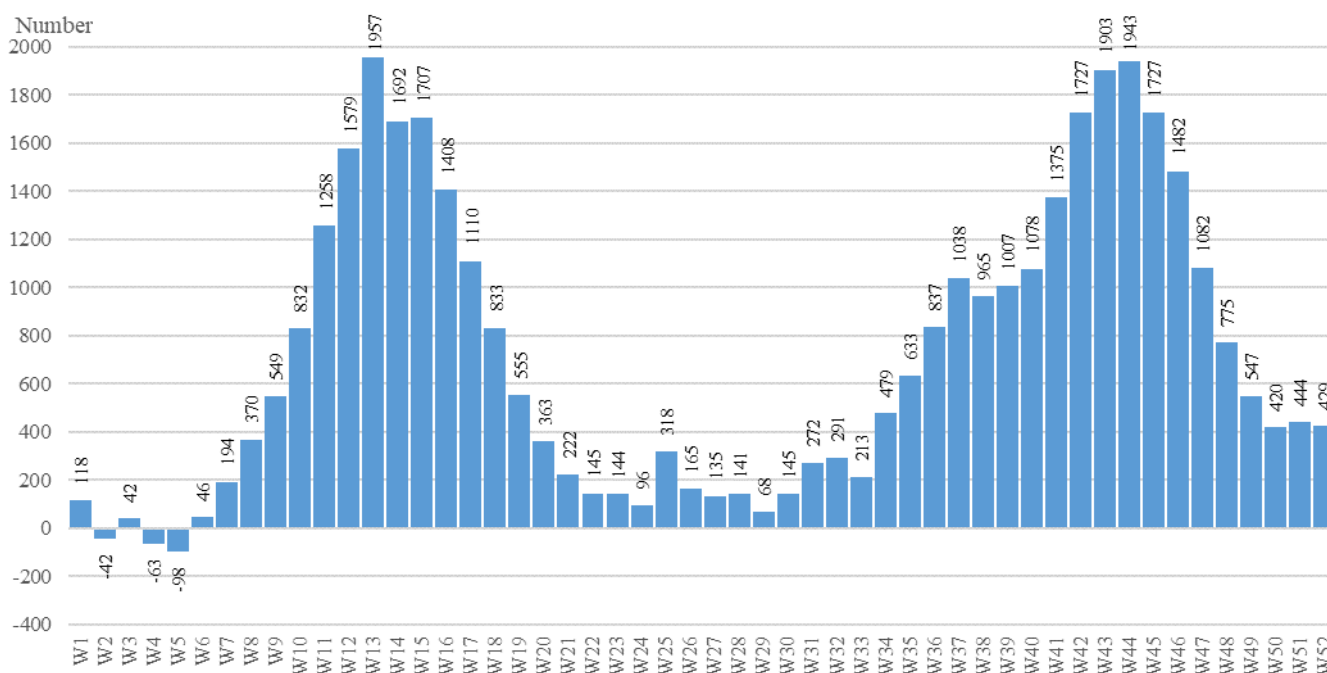
<sup>1</sup> Represents the ratio of the number of deaths during the respective period (quarter) to the average annual population multiplied by 365 and divided by the number of days during the same period.

Figure 2. Weekly crude mortality rates in the period 2016 - 2021



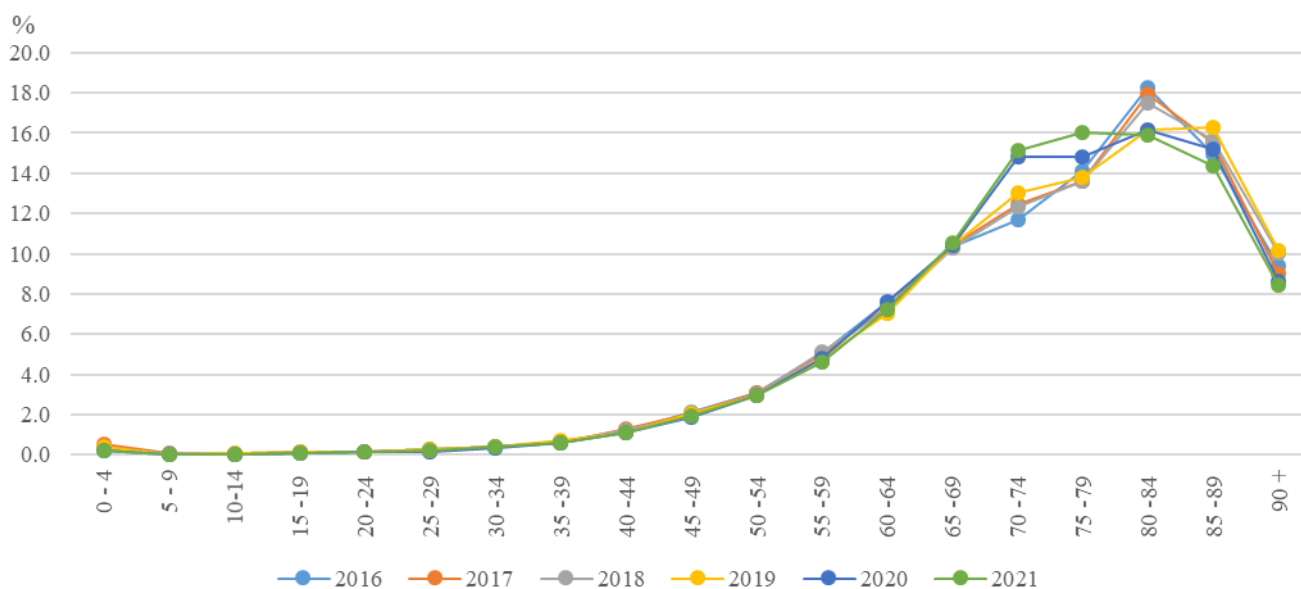
The highest positive number of deaths in the fourth quarter of 2021 compared to the average deaths for the period 2016 - 2020 is 1943 cases in the 44th week or mortality increased by 88.5% compared to the base period (2016-2020).

Figure 3. Change of the deaths by weeks in 2021 compared to the average deaths for the period 2016 - 2020



In the fourth quarter of the period 2016 - 2021, the age distribution of the deaths remains the same in the age groups up to 69 years of age. There is an increase in the share of deaths in the age groups from 70 to 79 years.

**Figure 4. Share of deaths by age in the fourth quarter of the period 2016 - 2021**



In nineteen districts there is an increase in the absolute number of deaths in the fourth quarter of 2021 compared to the same period of 2020. The highest growth is in the districts of Vidin (19.7%), Pernik (12.8%), Varna (12.7%), Dobrich (12.4%) and Sofia (stolitsa) (11.2%). There is a decrease in the number of dead persons in the remaining nine districts. The lowest is the decrease in the districts of Smolyan (-8.9%), Razgrad (-6.1%), Targovishte (-4.4%), Silistra (-3.7%) and Shumen (-3.5%).

### 1. Deaths in the fourth quarter of 2020 and 2021 by districts

Districts	2020 (number)	2021 (number)	Deaths growth (number)	Deaths growth (%)
<b>Total</b>	<b>43971</b>	<b>45812</b>	<b>1841</b>	<b>4.2</b>
Blagoevgrad	1807	1897	90	5.0
Burgas	2087	2114	27	1.3
Varna	2303	2595	292	12.7
Veliko Tarnovo	1599	1729	130	8.1
Vidin	768	919	151	19.7
Vratsa	1206	1340	134	11.1
Gabrovo	933	1009	76	8.1
Dobrich	1026	1153	127	12.4
Kardzhali	759	752	-7	-0.9
Kyustendil	981	1045	64	6.5
Lovech	980	1016	36	3.7
Montana	1217	1307	90	7.4
Pazardzhik	1765	1710	-55	-3.1
Pernik	959	1082	123	12.8
Pleven	1738	1762	24	1.4
Plovdiv	4336	4264	-72	-1.7
Razgrad	907	852	-55	-6.1
Ruse	1603	1601	-2	-0.1
Silistra	854	822	-32	-3.7
Sliven	1126	1174	48	4.3
Smolyan	720	656	-64	-8.9
Sofia (stolitsa)	6158	6847	689	11.2
Sofia	1737	1756	19	1.1
Stara Zagora	2112	2127	15	0.7
Targovishte	815	779	-36	-4.4
Haskovo	1523	1561	38	2.5
Shumen	1136	1096	-40	-3.5
Yambol	816	847	31	3.8

There is an increase in the number of deaths in the fourth quarter of 2021 compared to the third quarter of the same year in all districts of the country. The highest is the increase in the districts of Vidin (87.9%), Montana (83.6%) and Kyustendil (70.5%). The lowest is the increase in the districts - Targovishte (21.2%), Kardzhali (23.9) and Burgas (31.9%).

## 2. Deaths in the third and fourth quarter of 2021 by districts

Districts	III quarter 2021 (number)	IV quarter 2021 (number)	Deaths growth (number)	Deaths growth (%)
<b>Total</b>	<b>30713</b>	<b>45812</b>	<b>15099</b>	<b>49.2</b>
Blagoevgrad	1184	1897	713	60.2
Burgas	1603	2114	511	31.9
Varna	1714	2595	881	51.4
Veliko Tarnovo	1303	1729	426	32.7
Vidin	489	919	430	87.9
Vratsa	839	1340	501	59.7
Gabrovo	609	1009	400	65.7
Dobrich	841	1153	312	37.1
Kardzhali	607	752	145	23.9
Kyustendil	613	1045	432	70.5
Lovech	680	1016	336	49.4
Montana	712	1307	595	83.6
Pazardzhik	1154	1710	556	48.2
Pernik	675	1082	407	60.3
Pleven	1217	1762	545	44.8
Plovdiv	2880	4264	1384	48.1
Razgrad	607	852	245	40.4
Ruse	1113	1601	488	43.8
Silistra	535	822	287	53.6
Sliven	780	1174	394	50.5
Smolyan	483	656	173	35.8
Sofia (stolitsa)	4364	6847	2483	56.9
Sofia	1168	1756	588	50.3
Stara Zagora	1471	2127	656	44.6
Targovishte	643	779	136	21.2
Haskovo	1054	1561	507	48.1
Shumen	772	1096	324	42.0
Yambol	603	847	244	40.5



---

## Methodological notes

### Coverage

The total number of deaths includes all people whose usual place of residence (current address) is in the Republic of Bulgaria, regardless of their place of death.

### Definition

Death means a termination of all vital functions without a possibility to be recovered.

### Geographical scope (territory)

Data on deaths are distributed in regional aspect (settlements, municipalities, districts and statistical regions) in accordance with the administrative-territorial division of the country as of 31.12. of the respective year by persons' current address.

### Data source

The source of data on deaths is the Unified System for Civil Registration and Administrative Services (ESGRAON). Deaths are registered through a common USCRASP-CDS "Death notification". Based on it and not later than 48 hours after the death, the Death Act is created. Electronic death certificates are sent monthly (from April 2020 - weekly) by DG GRAO at the Ministry of Regional Development and Public Works to the NSI. The data are processed, edited and validated through the Information System Demography in accordance with the rules set in the system for validation and control in the processing of demographic events. This ensures full coverage of death events for Bulgaria in one calendar year in accordance with the definitions and requirements of Regulation (EU) № 1260/2013 of the European Parliament and of the Council on European demographic statistics.

### Main indicators

#### *Crude mortality rate (‰)*

Represents the ratio of the number of deaths during the year to the average annual population in that year expressed per 1000 inhabitants.

#### *Total mortality rate for parts of the year (‰)*

Represents the ratio of the number of deaths during the respective period (weeks, months, quarters) to the average annual population multiplied by 365 and divided by the number of days during the same period.

#### *Change of the death (Excess mortality)*

Change in the number of deaths in the reporting year compared to the average number of deaths for the previous 5 years is calculated as an absolute difference between the number of deaths in a given week of the reporting year and the average number of deaths for the corresponding week of the 5-year period before the reporting year.