

MAIN LABOUR FORCE SURVEY RESULTS, FOURTH QUARTER OF 2019

Main labour market indicators in the fourth quarter of 2019

The activity rate for population aged 15 - 64 was 73.0%, by 1.9 percentage points higher compared to the fourth quarter of 2018.

The employment rate for population aged 15 - 64 increased by 2.3 percentage points from the same quarter of 2018 and achieved 70.0%.

The unemployment rate was 4.1%, by 0.6 percentage points lower compared to the fourth quarter of 2018.

There were 60.6 thousand **discouraged persons aged 15 - 64**, representing 5.0% of the economically inactive population in the same age group.

Employment

In the fourth quarter of 2019 there were 3 222.7 thousand **employed persons aged 15 years and over**, of whom 1 742.3 thousand men and 1 480.4 thousand women. The share of employed persons in the total population aged 15 years and over was 54.0% (61.0% for men and 47.7% for women).

In the fourth quarter of 2019, most employed persons - 2 033.2 thousand (63.1%) worked in the service sector, 978.0 thousand persons (30.3%) worked in the industry sector and 211.5 thousand persons (6.6%) worked in agriculture, forestry and fishing.

Of all employed persons 3.5% (111.6 thousand) were employers, 6.7% (214.6 thousand) were self-employed persons without employees, 89.3% (2 876.8 thousand) were employees and 0.6% (19.7 thousand) were unpaid family workers. Of all employees 2 204.6 thousand persons (76.6%) worked in private sector while 672.2 thousand (23.4%) worked in public sector.

The number of employees with temporary job increased by 16.3% in comparison with the fourth quarter of 2018 and achieved 117.8 thousand, representing 4.1% of all employees.

In the fourth quarter of 2019, the employment in specific age groups was as follows:

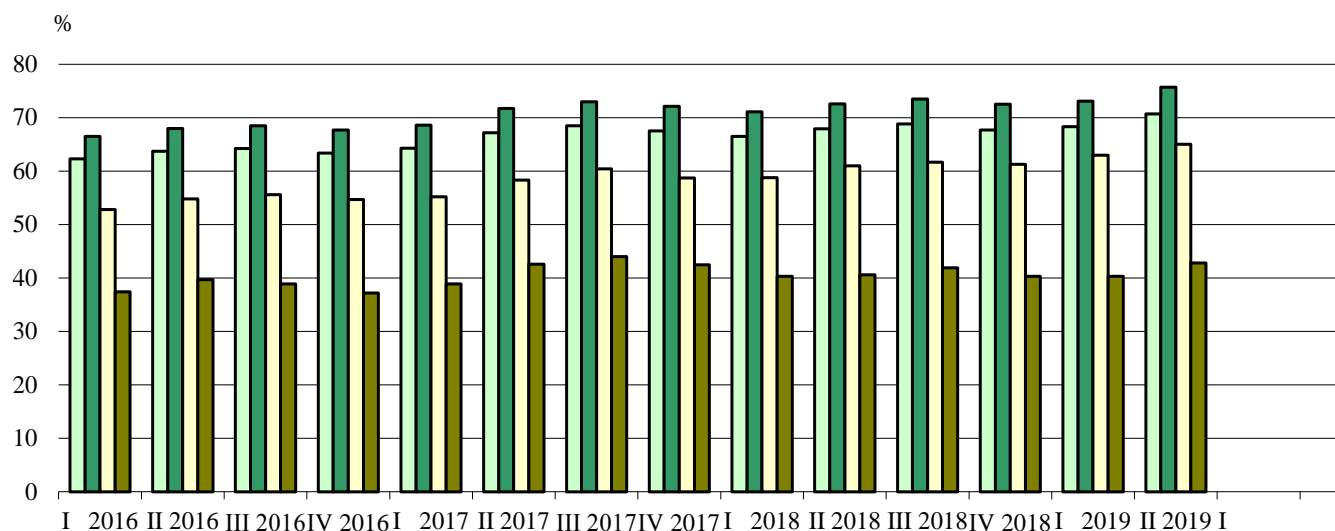
There were 3 123.5 thousand **employed persons aged 15 - 64 years**. The employment rate for the same age group was 70.0% (74.7% for men and 65.2% for women).

The employment rate for the age group 15 - 29 years was 41.3% (47.2% for men and 35.1% for women).

The employment rate for the age group 20 - 64 years was 74.9%, 79.9% and 69.8% for men and women respectively. This rate was by 2.4 percentage points higher than in the fourth quarter of 2018. It increased by 2.7 percentage points for men and by 2.0 percentage points for women.

There were 611.7 thousand **employed persons aged 55 - 64 years**, representing 64.4% of population in the same age group (70.3% of men and 58.9% of women). In comparison with the fourth quarter of 2018, the **employment rate (55 - 64 years)** went up by 3.1 percentage points.

Figure 1. Employment rate by age group and by quarter



Unemployment

In the fourth quarter of 2019 there were 138.5 thousand **unemployed persons**, of whom 80.6 thousand (58.2%) men and 57.9 thousand (41.8%) women. **The unemployment rate** was 4.1%, 4.4% and 3.8% for men and women respectively. In comparison with the fourth quarter of 2018, the unemployment rate went down by 0.6 percentage points, registering the same decrease for men and women.

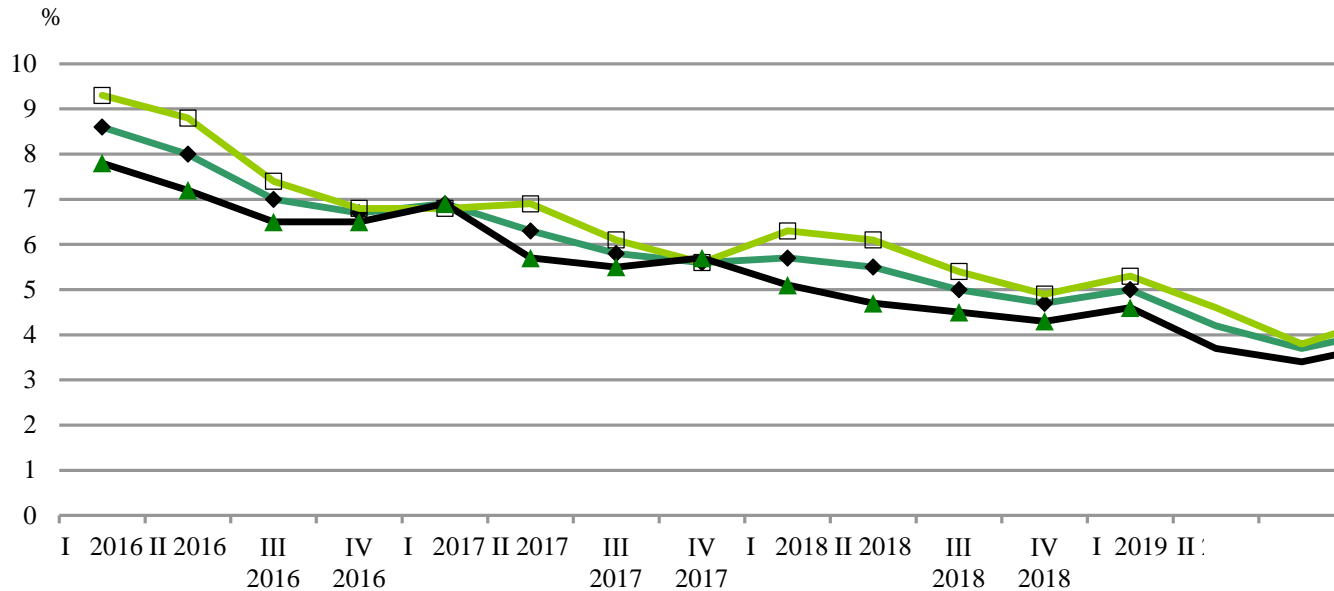
Among all unemployed persons, 9.5% had attained tertiary education, 45.9% had completed upper secondary education and 44.6% had at most lower secondary education. The unemployment rate by level of educational attainment was as follows: 1.3% for higher education, 3.3% for upper secondary and 13.8% for education lower than upper secondary.

In the fourth quarter of 2019 there were 73.6 thousand **long-term unemployed persons (unemployed for one or more years)**, representing 53.1% of all unemployed persons. **The long-term unemployment rate** was 2.2%, 2.3% for men and 2.1% for women.

Of all unemployed people 25.5 thousand (18.4%) were looking for first job.

In the fourth quarter of 2019, **the unemployment rate for the age group 15 - 29 years** was 6.7%, by 0.7 percentage points lower than in a year earlier. The unemployment rate (15 - 29 years) was 7.2% for men and 5.9% for women.

Figure 2. Unemployment rate by sex and by quarter



Economic inactivity

In the fourth quarter of 2019 there were 2 601.3 thousand **economically inactive persons aged 15 years and over**, of whom 1 035.6 thousand (39.8%) men and 1 565.8 thousand (60.2%) women. **In the age group 15 - 64 years** 1 203.7 thousand persons were economically inactive, accounting for 27.0% of population in the same age group. For more than one third of them the main reason for inactivity was participation in education or training.

Methodological notes

The Labour Force Survey (LFS) is a continuous sample survey providing quarterly and annual data on the economic activity of the population aged 15 and over. The survey covers non-institutional households.

Reference period - the characteristics of each interviewee refer to his/her status during a defined calendar week.

Economically active population (labour force) comprises all employed and unemployed persons.

Employed are persons aged 15 and over who during the reference period:

- performed some work for at least one hour for pay in cash or in kind or other income;
- did not work but had a job or an enterprise, a business from which they were temporarily absent due to illness, annual leave, full-paid maternity leave, parental leave, strike or another labour dispute, etc.

Unemployed are persons aged 15 to 74 who:

- did not work at all during the reference period;
- were actively seeking work within the preceding four weeks, including the reference one, or have found a new job or business that is expected to start within 3 months following the reference period;
- were available to start working within two weeks following the reference period.

Long-term unemployed are persons who have been unemployed for one or more years.

Economically inactive population (persons not in the labour force) includes persons aged 15 and over who were neither employed, nor unemployed during the reference period.

Discouraged persons are persons not in the labour force who want to work but they do not actively look for a job, because they do not believe they will find one.

Activity rate - ratio between the economically active population and the total population of the same age group.

Employment rate - ratio between the employed population and the total population of the same age group.

Unemployment rate - ratio between the unemployed persons and the economically active population.

Long-term unemployment rate - ratio between the long-term unemployed persons and the economically active population.

For the weighting of the results of the survey for the fourth quarter of 2019 preliminary data on population as of 30 September 2019 (excluding population living in institutional households) were used.

Like all sample surveys, data from the Labour Force Survey are subject of errors due to the sample (stochastic errors). The relative standard errors for the main LFS indicators for the fourth quarter of 2019 are as follows:

- total number of employed persons - 1.3%;
- total number of unemployed persons - 6.3%;
- unemployment rate - 6.2%.

Because of the rounding of the figures some of the totals (rows and columns) are not equal to the sum of the components.

More detailed data from the Labour Force Survey could be found on the NSI website - www.nsi.bg, section 'Labour Market', Labour Force Survey.

Annex

Table 1

Main labour market indicators, fourth quarter of 2018 and 2019

	Fourth quarter 2018	Fourth quarter 2019	Change (fourth quarter 2019 minus fourth quarter 2018)
Total			
Activity rate (15 - 64) - %	71.1	73.0	1.9
Employed persons aged 15 and over - in thousands	3148.9	3222.7	73.8
Employed persons aged 15 - 64 - in thousands	3058.4	3123.5	65.1
Employed persons aged 15 - 24 - in thousands	125.3	137.0	11.7
Employed persons aged 15 - 29 - in thousands	423.9	419.9	-4.0
Employed persons aged 20 - 64 - in thousands	3046.2	3106.9	60.7
Employed persons aged 55 - 64 - in thousands	588.9	611.7	22.8
Employment rate (15 and over) - %	52.5	54.0	1.5
Employment rate (15 - 64) - %	67.7	70.0	2.3
Employment rate (15 - 24) - %	20.0	22.2	2.2
Employment rate (15 - 29) - %	40.3	41.3	1.0
Employment rate (20 - 64) - %	72.5	74.9	2.4
Employment rate (55 - 64) - %	61.3	64.4	3.1
Unemployed persons - total - in thousands	154.1	138.5	-15.6
Unemployed persons aged 15 - 64 - in thousands	151.2	134.7	-16.5
Unemployed persons aged 15 - 29 - in thousands	33.8	30.0	-3.8
Unemployment rate - %	4.7	4.1	-0.6
Unemployment rate (15 - 64) - %	4.7	4.1	-0.6
Unemployment rate (15 - 29) - %	7.4	6.7	-0.7
Long-term unemployment rate - %	2.9	2.2	-0.7
Discouraged persons aged 15 and over - in thousands	73.6	63.0	-10.6
Discouraged persons aged 15 - 64 - in thousands	71.0	60.6	-10.4

Table 1

Main labour market indicators, fourth quarter of 2018 and 2019

(Continued)

	Fourth quarter 2018	Fourth quarter 2019	Change (fourth quarter 2019 minus fourth quarter 2018)
Male			
Activity rate (15 - 64) - %	75.8	78.2	2.4
Employed persons aged 15 and over - in thousands	1695.3	1742.3	47.0
Employed persons aged 15 - 64 - in thousands	1642.9	1684.3	41.4
Employed persons aged 15 - 24 - in thousands	74.5	81.1	6.6
Employed persons aged 15 - 29 - in thousands	243.1	245.9	2.8
Employed persons aged 20 - 64 - in thousands	1635.5	1672.9	37.4
Employed persons aged 55 - 64 - in thousands	306.6	321.1	14.5
Employment rate (15 and over) - %	58.9	61.0	2.1
Employment rate (15 - 64) - %	72.0	74.7	2.7
Employment rate (15 - 24) - %	23.2	25.6	2.4
Employment rate (15 - 29) - %	45.0	47.2	2.2
Employment rate (20 - 64) - %	77.2	79.9	2.7
Employment rate (55 - 64) - %	66.6	70.3	3.7
Unemployed persons - total - in thousands	88.2	80.6	-7.6
Unemployed persons aged 15 - 64 - in thousands	86.1	78.3	-7.8
Unemployed persons aged 15 - 29 - in thousands	22.2	19.1	-3.1
Unemployment rate - %	4.9	4.4	-0.5
Unemployment rate (15 - 64) - %	5.0	4.4	-0.6
Unemployment rate (15 - 29) - %	8.4	7.2	-1.2
Long-term unemployment rate - %	3.1	2.3	-0.8
Discouraged persons aged 15 and over - in thousands	41.4	31.3	-10.1
Discouraged persons aged 15 - 64 - in thousands	39.8	29.6	-10.2

Table 1

Main labour market indicators, fourth quarter of 2018 and 2019

(Continued and end)

	Fourth quarter 2018	Fourth quarter 2019	Change (fourth quarter 2019 minus fourth quarter 2018)
Female			
Activity rate (15 - 64) - %	66.3	67.8	1.5
Employed persons aged 15 and over - in thousands	1453.6	1480.4	26.8
Employed persons aged 15 - 64 - in thousands	1415.4	1439.2	23.8
Employed persons aged 15 - 24 - in thousands	50.8	55.9	5.1
Employed persons aged 15 - 29 - in thousands	180.8	174.1	-6.7
Employed persons aged 20 - 64 - in thousands	1410.7	1434.0	23.3
Employed persons aged 55 - 64 - in thousands	282.3	290.6	8.3
Employment rate (15 and over) - %	46.6	47.7	1.1
Employment rate (15 - 64) - %	63.4	65.2	1.8
Employment rate (15 - 24) - %	16.7	18.6	1.9
Employment rate (15 - 29) - %	35.3	35.1	-0.2
Employment rate (20 - 64) - %	67.8	69.8	2.0
Employment rate (55 - 64) - %	56.4	58.9	2.5
Unemployed persons - total - in thousands	65.9	57.9	-8.0
Unemployed persons aged 15 - 64 - in thousands	65.1	56.4	-8.7
Unemployed persons aged 15 - 29 - in thousands	11.6	10.8	-0.8
Unemployment rate - %	4.3	3.8	-0.5
Unemployment rate (15 - 64) - %	4.4	3.8	-0.6
Unemployment rate (15 - 29) - %	6.0	5.9	-0.1
Long-term unemployment rate - %	2.7	2.1	-0.6
Discouraged persons aged 15 and over - in thousands	32.2	31.6	-0.6
Discouraged persons aged 15 - 64 - in thousands	31.3	31.0	-0.3