

Industrial Production Indices and Industrial Turnover Indices in December 2009^{1,2}

1. Industrial Production Indices³

The preliminary data showed that the Industrial Production Index decreased by 12.1% in December 2009 as compared to December 2008. Decreases were registered in the manufacturing by 14.3% and in the electricity, gas, steam and air conditioning supply by 12.0%, while in the mining and quarrying industry the production increased by 13.6%. The production of investment goods fell by 19.4%, the production of intermediate goods by 16.8%, the production of energy by 4.2%.

In December 2009, the Industrial Production Index decreased by 0.7% as compared to the previous month. Decreases were registered in the mining and quarrying industry by 12.5% and in the manufacturing by 2.6%, while in the electricity, gas, steam and air conditioning supply the production increased by 9.5%. The most significant decreases of production were seen in the manufacture of basic metals by 28.3%, the manufacture of other non-metallic mineral products by 18.7%, the manufacture of textiles by 15.9%. There were increases in the manufacture of beverages by 14.3%, in the manufacture of paper and paper products by 9.1%, in the manufacture of food products by 7.6%, in the manufacture of wearing apparel by 4.4%.

2. Industrial Turnover Indices⁴

According to the preliminary data in December 2009 the Industrial Turnover Index decreased by 9.8% compared to December 2008. The electricity, gas, steam and air conditioning supply reported a drop of 23.7%, the manufacturing - 5.3%, while in the mining and quarrying industry an increase by 24.0% was seen.

In December 2009, the turnover increased by 5.8% as compared to the previous month. The increase in the electricity, gas, steam and air conditioning supply was by 9.1% and in the manufacturing - by 5.7%.

¹ December 2009 data are preliminary.

² Since January 2009, Industrial Production Indices and Industrial Turnover Indices are calculated according to the new Classification of Economic Activities NACE.BG 2008. At the same time, the base year has been changed and indices are calculated at 2005 as a base year. Historical data series have been recalculated back to 2000 and they are posted in NSI web-site (http://www.nsi.bg/Op_e/Op_e.htm).

³ Monthly Industrial Production and Industrial turnover indices measure changes in **production and turnover values** of industrial enterprises. This information can be used to access the current economic development and for short-term forecasts. Indices do not measure the actual production level, it aims to measure the average change in value of production between two points of time

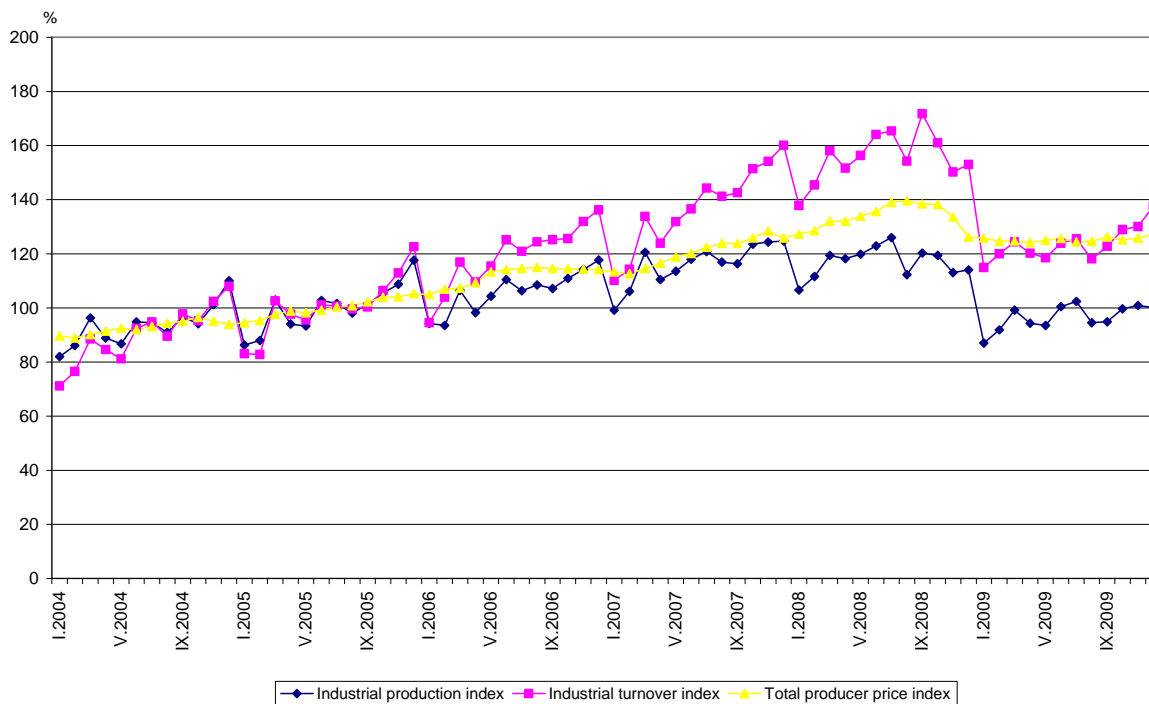
Indices are compiled on the base of information collected through representative sampling survey on industrial enterprises. The sample covers enterprises with annual turnover more than 97% of total turnover in industry.

Industrial production indices are calculated at constant base year (2005) that is to say they are weighted with the structure of the value added at factor costs in the base year

⁴ The turnover comprises the totals invoiced by the observation units plus taxes on products (excise duty). Turnover indices are calculated at 2005 as a base year through direct comparison of the values of the turnover at current prices, turnover values are not corrected with the price changes. **The Turnover indices reflect the development of the value of sales as well as changes in prices.**

The final data on Industrial Production and Turnover Indices can be found in NSI internet web-site: (http://www.nsi.bg/Op_e/Op_e.htm).

Industrial Production Indices and Industrial Turnover Indices (2005 = 100)



Industrial Production Indices in December 2009⁵
(Preliminary data)

Economic activities	2005=100	Previous month=100	The same month of 2008=100
Industry	100.2	99.3	87.9
Mining and quarrying	78.0	87.5	113.6
of which:			
Mining of coal and lignite	97.4	82.8	87.2
Mining of metal ores	76.4	88.9	258.7
Other mining and quarrying	78.5	97.2	72.1
Manufacturing	94.0	97.4	85.7
of which:			
Manufacture of food products	124.1	107.6	94.5
Manufacture of beverages	100.9	114.3	72.1
Manufacture of tobacco products	116.5	86.6	94.0
Manufacture of textiles	57.8	84.1	75.5
Manufacture of wearing apparel	72.6	104.4	80.5
Manufacture of leather and related products	66.3	89.8	74.2
Manufacture of wood and of products of wood and cork, except furniture; manufacture of articles of straw and plaiting materials	71.7	84.9	85.4
Manufacture of paper and paper products	85.6	109.1	82.2
Printing and reproduction of recorded media	143.2	99.2	94.7
Manufacture of chemicals and chemical products	74.8	90.8	84.9
Manufacture of basic pharmaceutical products and pharmaceutical preparations	89.6	101.5	93.3
Manufacture of rubber and plastic products	103.3	89.5	87.0
Manufacture of other non-metallic mineral products	68.5	81.3	60.5
Manufacture of basic metals	79.4	71.7	95.8
Manufacture of fabricated metal products, except machinery and equipment	90.7	106.3	56.7
Manufacture of computer, electronic and optical products	128.9	128.8	119.0
Manufacture of electrical equipment	138.4	89.1	101.2
Manufacture of machinery and equipment n.e.c.	99.7	99.3	72.4
Manufacture of motor vehicles, trailers and semi-trailers	120.4	94.5	165.8
Manufacture of other transport equipment	102.5	112.2	55.5
Manufacture of furniture	95.4	103.1	64.3
Other manufacturing	101.3	69.9	87.2
Repair and installation of machinery and equipment	116.3	113.4	80.1
Electricity, gas, steam and air conditioning supply	133.1	109.5	88.0
Electricity, gas, steam and air conditioning supply	133.1	109.5	88.0

⁵ In the tables are not included data that according to the Law on Statistics are confidential and in this way they are statistical secrecy.

Industrial Turnover Indices in December 2009⁶
(Preliminary data)

Economic activities	2005=100	Previous month=100	The same month of 2008=100
Industry	137.6	105.8	90.2
Mining and quarrying	133.3	89.1	124.0
of which:			
Mining of coal and lignite	154.9	87.0	89.8
Mining of metal ores	153.6	92.8	274.3
Other mining and quarrying	101.2	82.8	72.7
Manufacturing	127.4	105.7	94.7
of which:			
Manufacture of food products	193.3	112.8	105.6
Manufacture of beverages	137.0	124.0	81.9
Manufacture of tobacco products	307.8	222.7	97.0
Manufacture of textiles	62.7	84.0	71.2
Manufacture of wearing apparel	96.6	107.9	83.2
Manufacture of leather and related products	70.9	89.9	75.0
Manufacture of wood and of products of wood and cork, except furniture; manufacture of articles of straw and plaiting materials	92.6	91.1	86.9
Manufacture of paper and paper products	91.1	104.6	78.3
Printing and reproduction of recorded media	139.6	102.6	90.4
Manufacture of chemicals and chemical products	133.5	106.7	93.4
Manufacture of basic pharmaceutical products and pharmaceutical preparations	116.1	98.6	108.8
Manufacture of rubber and plastic products	126.1	92.9	85.2
Manufacture of other non-metallic mineral products	95.0	85.6	62.4
Manufacture of basic metals	105.4	80.2	143.9
Manufacture of fabricated metal products, except machinery and equipment	121.8	106.9	58.2
Manufacture of computer, electronic and optical products	127.0	118.0	107.3
Manufacture of electrical equipment	180.3	90.4	104.2
Manufacture of machinery and equipment n.e.c.	131.6	96.1	86.7
Manufacture of motor vehicles, trailers and semi-trailers	96.6	94.6	103.0
Manufacture of other transport equipment	121.4	108.0	55.6
Manufacture of furniture	117.0	98.9	65.7
Other manufacturing	110.8	73.3	80.3
Repair and installation of machinery and equipment	165.9	112.1	83.9
Electricity, gas, steam and air conditioning supply	181.7	109.1	76.3
Electricity, gas, steam and air conditioning supply	181.7	109.1	76.3

⁶ In the tables are not included data that according to the Law on Statistics are confidential and in this way they are statistical secrecy.