

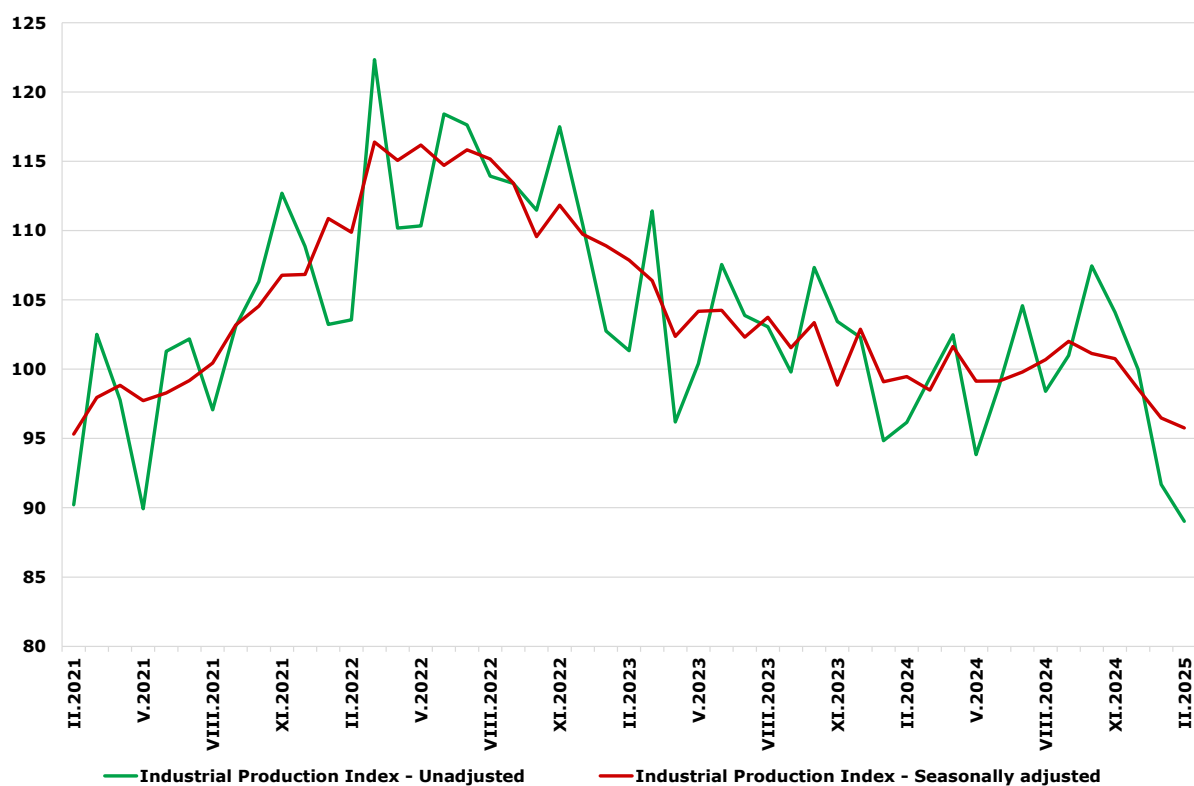


## INDUSTRIAL PRODUCTION INDICES IN FEBRUARY 2025

The Industrial Production Index decreased by 0.7% in February 2025 compared to the previous month. The data are preliminary and seasonally adjusted.

In comparison with February 2024, a decrease of 4.6% was registered in the calendar-adjusted Industrial Production Index.

**Figure 1. Industrial Production Indices (2021 = 100)**



### Monthly changes

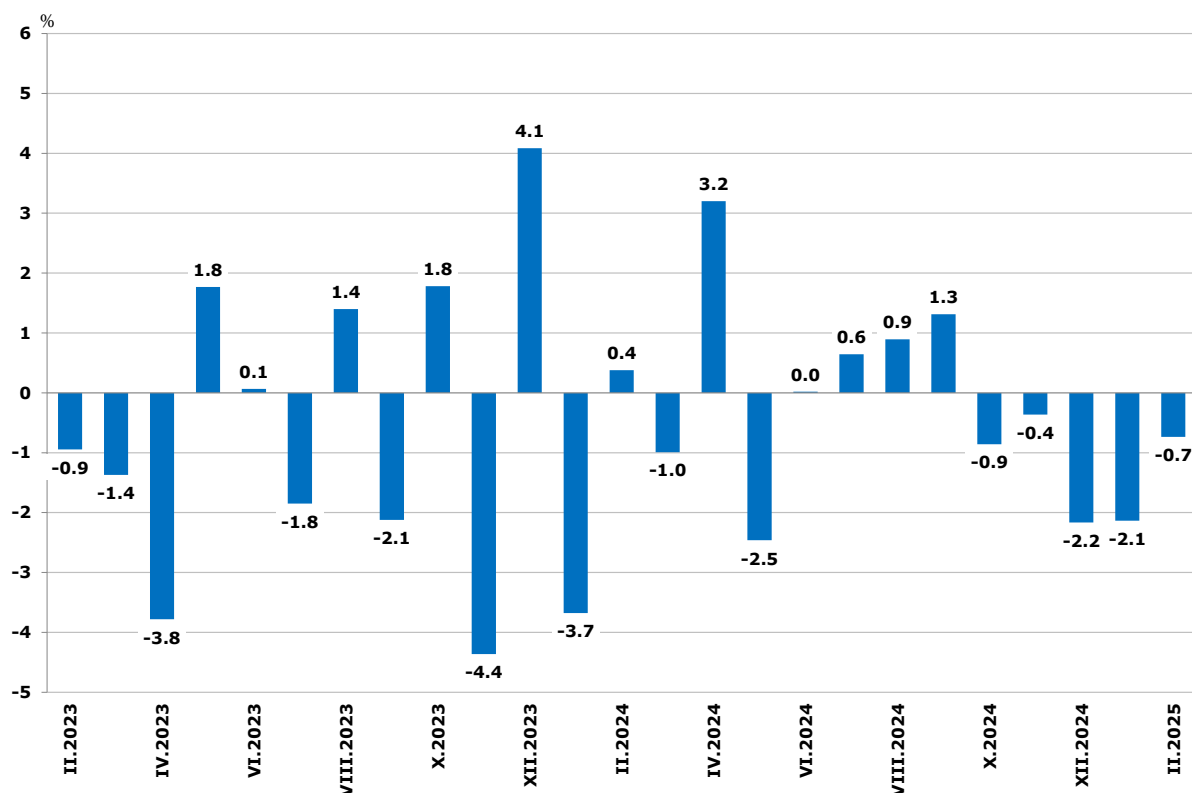
In February 2025, compared to the previous month, a decrease was seen in the mining and quarrying industry - by 6.3%, and in the manufacturing - by 2.7%, while a rise was registered in the electricity, gas, steam and air conditioning supply - by 3.5%.

More significant decline in the manufacturing was reported in the manufacture of fabricated metal products, except machinery and equipment - by 23.5%, in the repair and installation of machinery and equipment - by 15.2%, and in the manufacture of other non-metallic mineral products - by 12.8%.

## INDUSTRIAL PRODUCTION INDICES IN FEBRUARY 2025

A rise was observed in the manufacture of other transport equipment - by 20.4%, in the other manufacturing - by 20.2%, and in the manufacture of computer, electronic and optical products - by 15.8%.

**Figure 2. Changes of Industrial Production**  
**Indices compared to the previous month**  
**(Seasonally adjusted)**



### Annual changes

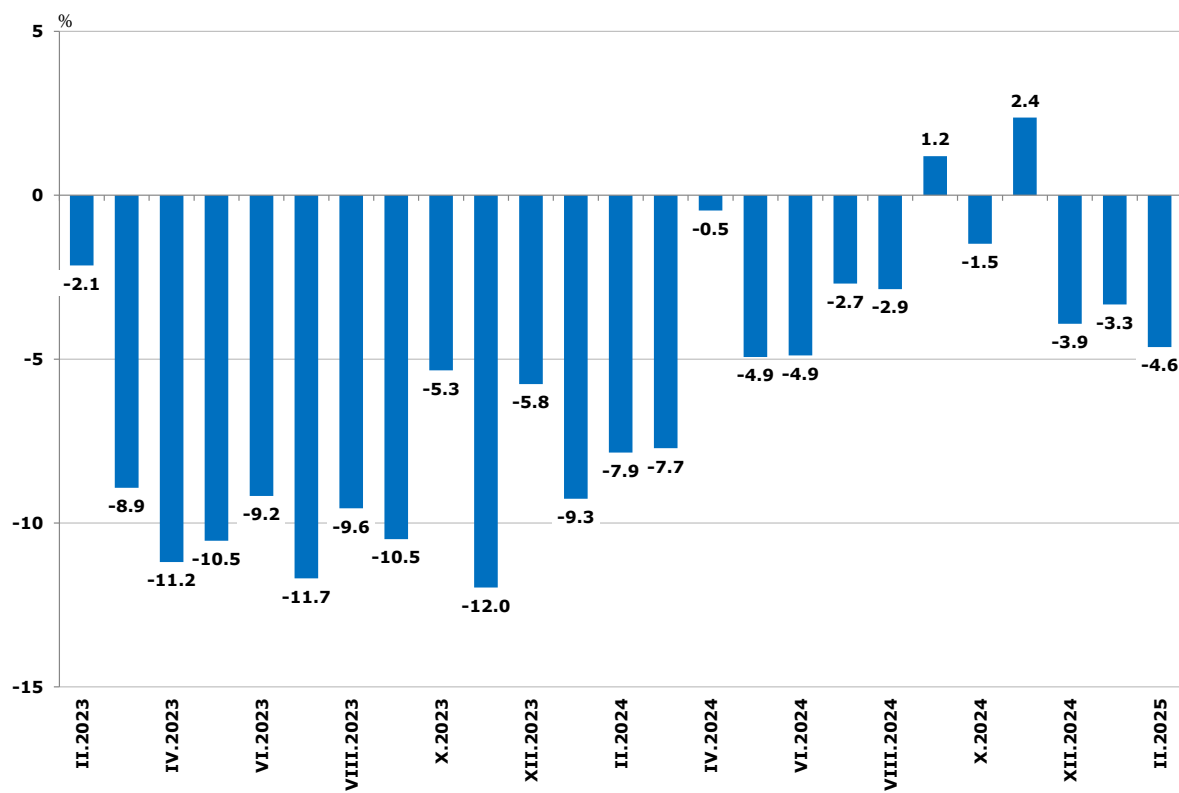
On an annual basis, a decrease of the Industrial Production Index was observed in the manufacturing - by 7.1%, in the mining and quarrying industry - by 1.8%, while a rise was registered in the electricity, gas, steam and air conditioning supply - by 11.2%.

In the manufacturing, a significant decline in production, compared to the same month of the previous year, was seen in the manufacture of basic metals - by 36.0%, in the manufacture of textiles - by 23.6%, and in the manufacture of paper and paper products - by 19.3%.

A rise was reported in the manufacture of other transport equipment - by 54.6%, and in the manufacture of tobacco products - by 37.5%.

## INDUSTRIAL PRODUCTION INDICES IN FEBRUARY 2025

**Figure 3. Changes of the Industrial Production Indices compared to the same month of the previous year (Calendar-adjusted)**



## **INDUSTRIAL PRODUCTION INDICES IN FEBRUARY 2025**

---

### **Methodological notes**

The monthly indices of industrial production are calculated in accordance with the requirements of Regulation (EU) 2019/2152 of the European Parliament and of the Council on European Business Statistics.

The Monthly Industrial Production and Industrial Turnover Indices measure changes in production and turnover values of industrial enterprises. This information can be used to assess the current economic development and for short-term forecasts. Indices do not measure the actual production level; they aim to measure the average change in the value of production between two points in time. Indices are compiled based on information collected through a representative sampling survey on industrial enterprises. The sample covers enterprises with an annual turnover of more than 97% of the total turnover in the industry.

The Industrial Production Indices are calculated at a constant base year, that is to say they are weighted with the structure of the value added at factor costs in the base year.

Seasonal adjustment is a statistical method which eliminates the seasonal component of the time series.

Calendar adjustment is an adjustment for variations in the monthly data, caused by calendar effects, the different number of calendar and working days in the months, national holidays and outliers (for example, the presence of more non-working days in May could contribute to the decline in production in some activities).

Since July 2024, all dynamic rows have been recalculated based on 2021 as base year and have been published in IS Infostat.

**INDUSTRIAL PRODUCTION INDICES  
IN FEBRUARY 2025**

**Annex**

**Table 1**

**Changes of Industrial Production Indices compared to the previous month<sup>1</sup>**

(Per cent)

Economic activities	NACE.BG - 2008	2024				2025	
		IX	X	XI	XII	I	II*
<b>Industry</b>	<b>B_TO_E36</b>	<b>1.3</b>	<b>-0.9</b>	<b>-0.4</b>	<b>-2.2</b>	<b>-2.1</b>	<b>-0.7</b>
<b>Mining and quarrying</b>	<b>B</b>	<b>9.4</b>	<b>-23.3</b>	<b>1.5</b>	<b>20.9</b>	<b>-19.3</b>	<b>-6.3</b>
Mining of coal and lignite	B05	-12.0	-54.7	186.3	63.9	-56.3	9.6
Extraction of crude petroleum and natural gas	B06	..	..	..	..	..	..
Mining of metal ores	B07	6.4	-8.9	-2.9	5.8	-9.9	-2.0
Other mining and quarrying	B08	-7.0	3.6	2.0	-8.4	8.3	-21.9
Mining support service activities	B09	..	..	..	..	..	..
<b>Manufacturing</b>	<b>C</b>	<b>-0.9</b>	<b>1.5</b>	<b>-0.1</b>	<b>-2.1</b>	<b>-1.8</b>	<b>-2.7</b>
Manufacture of food products	C10	-0.5	4.6	-6.7	-1.1	-3.9	-7.1
Manufacture of beverages	C11	3.6	-5.7	-3.3	3.2	-0.5	-1.8
Manufacture of tobacco products	C12	2.5	-3.4	-15.1	14.3	14.4	1.7
Manufacture of textiles	C13	24.7	-15.7	-7.7	-0.4	-6.5	-1.8
Manufacture of wearing apparel	C14	-0.6	2.4	3.2	-16.1	0.6	-0.4
Manufacture of leather and related products	C15	-5.4	13.2	-0.5	-7.3	2.2	-4.2
Manufacture of wood and of products of wood and cork, except furniture; manufacture of articles of straw and plaiting materials	C16	7.3	-5.1	4.3	0.5	-2.2	-3.4
Manufacture of paper and paper products	C17	6.7	-4.3	-2.3	-10.5	-9.8	3.7
Printing and reproduction of recorded media	C18	7.8	-2.6	2.6	-3.3	-0.5	-3.3
Manufacture of coke and refined petroleum products	C19	..	..	..	..	..	..
Manufacture of chemicals and chemical products	C20	-5.5	-4.6	11.1	-7.2	-4.4	-6.3
Manufacture of basic pharmaceutical products and pharmaceutical preparations	C21	-13.6	11.4	-7.2	7.6	-2.9	-8.9
Manufacture of rubber and plastic products	C22	1.2	-3.7	5.7	-1.2	-4.5	-1.1
Manufacture of other non-metallic mineral products	C23	0.9	5.2	5.2	17.3	1.3	-12.8
Manufacture of basic metals	C24	7.7	-5.5	-4.3	-20.7	0.8	2.7
Manufacture of fabricated metal products, except machinery and equipment	C25	-7.3	14.3	-7.4	-2.9	14.6	-23.5
Manufacture of computer, electronic and optical products	C26	6.1	-2.8	6.5	-2.6	-15.3	15.8
Manufacture of electrical equipment	C27	-3.9	4.6	1.3	-7.8	2.0	-2.7
Manufacture of machinery and equipment n.e.c.	C28	2.6	1.0	-6.6	4.0	0.3	5.2
Manufacture of motor vehicles, trailers and semi-trailers	C29	-9.4	-7.1	4.4	-6.1	17.9	-2.0
Manufacture of other transport equipment	C30	-24.2	12.3	-12.4	6.3	-1.3	20.4
Manufacture of furniture	C31	-2.7	2.4	-2.2	1.7	-0.8	10.2
Other manufacturing	C32	-9.1	30.5	-6.4	9.6	-17.0	20.2
Repair and installation of machinery and equipment	C33	10.0	9.9	-19.8	6.0	11.9	-15.2
<b>Electricity, gas, steam and air conditioning supply</b>	<b>D</b>	<b>24.7</b>	<b>-5.4</b>	<b>-8.0</b>	<b>-19.1</b>	<b>20.6</b>	<b>3.5</b>
Electricity, gas, steam and air conditioning supply	D35	24.7	-5.4	-8.0	-19.1	20.6	3.5

<sup>1</sup> Seasonally adjusted.

\* Preliminary data.

„..“ - Confidential data.

**INDUSTRIAL PRODUCTION INDICES  
IN FEBRUARY 2025**

**Table 2**

**Changes of Industrial Production Indices compared to the same month of the  
previous year<sup>2</sup>**

(Per cent)

Economic activities	NACE.BG - 2008	2024				2025	
		IX	X	XI	XII	I	II*
<b>Industry</b>	<b>B_TO_E36</b>	<b>1.2</b>	<b>-1.5</b>	<b>2.4</b>	<b>-3.9</b>	<b>-3.3</b>	<b>-4.6</b>
<b>Mining and quarrying</b>	<b>B</b>	<b>30.9</b>	<b>-9.9</b>	<b>-5.0</b>	<b>8.0</b>	<b>-4.5</b>	<b>-1.8</b>
Mining of coal and lignite	B05	-18.3	-53.5	-4.7	26.9	-18.7	22.5
Extraction of crude petroleum and natural gas	B06	..	..	..	..	..	..
Mining of metal ores	B07	23.7	-5.7	-16.3	-4.1	-16.8	-14.9
Other mining and quarrying	B08	-2.0	-15.7	-0.1	-13.7	-1.5	-38.8
Mining support service activities	B09	..	..	..	..	..	..
<b>Manufacturing</b>	<b>C</b>	<b>-1.6</b>	<b>0.2</b>	<b>3.2</b>	<b>-1.2</b>	<b>-0.3</b>	<b>-7.1</b>
Manufacture of food products	C10	-0.3	3.3	-2.5	-3.5	-10.6	-16.9
Manufacture of beverages	C11	5.3	-3.4	-12.6	-3.5	-7.7	-10.3
Manufacture of tobacco products	C12	2.5	35.4	3.5	17.6	61.0	37.5
Manufacture of textiles	C13	10.2	-5.6	-22.4	-14.6	-17.7	-23.6
Manufacture of wearing apparel	C14	-16.8	-10.7	-2.1	-23.0	-17.5	-16.1
Manufacture of leather and related products	C15	-31.1	-7.6	-18.8	-21.8	-3.3	-13.7
Manufacture of wood and of products of wood and cork, except furniture; manufacture of articles of straw and plaiting materials	C16	10.0	-2.5	4.1	9.4	-6.9	-15.5
Manufacture of paper and paper products	C17	6.3	-1.0	-4.0	-10.6	-21.6	-19.3
Printing and reproduction of recorded media	C18	3.9	2.5	3.5	-14.9	-6.9	-8.1
Manufacture of coke and refined petroleum products	C19	..	..	..	..	..	..
Manufacture of chemicals and chemical products	C20	5.0	-11.6	20.1	5.6	-0.1	-9.3
Manufacture of basic pharmaceutical products and pharmaceutical preparations	C21	-6.0	7.7	1.4	29.5	4.2	-17.4
Manufacture of rubber and plastic products	C22	-1.2	-5.4	0.3	-0.3	0.3	0.0
Manufacture of other non-metallic mineral products	C23	-2.2	4.1	13.0	11.8	32.0	-2.1
Manufacture of basic metals	C24	-14.9	-13.9	-14.7	-36.2	-34.1	-36.0
Manufacture of fabricated metal products, except machinery and equipment	C25	25.3	23.7	23.9	23.9	27.4	-4.1
Manufacture of computer, electronic and optical products	C26	4.1	6.4	17.4	17.8	-15.7	-14.3
Manufacture of electrical equipment	C27	-8.1	3.3	8.4	-8.5	1.2	-11.9
Manufacture of machinery and equipment n.e.c.	C28	-4.3	3.2	-4.2	-4.3	8.2	7.2
Manufacture of motor vehicles, trailers and semi-trailers	C29	-14.3	-29.0	-13.4	-14.6	-9.1	-7.1
Manufacture of other transport equipment	C30	-23.0	9.8	4.0	1.6	33.3	54.6
Manufacture of furniture	C31	4.5	13.3	5.0	-6.7	-2.8	10.5
Other manufacturing	C32	-28.4	-10.1	-3.7	-4.2	-20.7	8.5
Repair and installation of machinery and equipment	C33	4.5	8.8	-8.5	-9.0	9.4	-4.2
<b>Electricity, gas, steam and air conditioning supply</b>	<b>D</b>	<b>13.3</b>	<b>7.3</b>	<b>11.7</b>	<b>-28.8</b>	<b>-13.6</b>	<b>11.2</b>
Electricity, gas, steam and air conditioning supply	D35	13.3	7.3	11.7	-28.8	-13.6	11.2

<sup>2</sup> Calendar-adjusted.

\* Preliminary data.

... - Confidential data.

**INDUSTRIAL PRODUCTION INDICES**  
**IN FEBRUARY 2025**

**Table 3**

**Industrial Production Indices**  
**(Seasonally adjusted, 2021 = 100)**

NACE.BG - 2008	2024											2025	
	II	III	IV	V	VI	VII	VIII	IX	X	XI	XII	I	II*
<b>B_TO_E36</b>	<b>99.5</b>	<b>98.5</b>	<b>101.6</b>	<b>99.1</b>	<b>99.2</b>	<b>99.8</b>	<b>100.7</b>	<b>102.0</b>	<b>101.1</b>	<b>100.8</b>	<b>98.6</b>	<b>96.5</b>	<b>95.8</b>
<b>B</b>	<b>80.2</b>	<b>81.8</b>	<b>84.8</b>	<b>76.0</b>	<b>77.2</b>	<b>83.8</b>	<b>102.4</b>	<b>112.0</b>	<b>85.9</b>	<b>87.2</b>	<b>105.4</b>	<b>85.1</b>	<b>79.7</b>
<b>B05</b>	34.7	47.1	47.0	38.7	46.7	58.8	48.4	42.6	19.3	55.2	90.5	39.5	43.3
<b>B06</b>	..	..	..	..	..	..	..	..	..	..	..	..	..
<b>B07</b>	104.6	101.9	106.4	101.2	100.0	99.6	111.2	118.3	107.8	104.7	110.8	99.9	97.8
<b>B08</b>	105.9	97.3	99.0	89.5	87.6	88.6	87.8	81.6	84.6	86.3	79.0	85.6	66.8
<b>B09</b>	..	..	..	..	..	..	..	..	..	..	..	..	..
<b>C</b>	<b>106.6</b>	<b>105.2</b>	<b>105.9</b>	<b>103.0</b>	<b>105.6</b>	<b>104.9</b>	<b>106.9</b>	<b>105.9</b>	<b>107.5</b>	<b>107.4</b>	<b>105.2</b>	<b>103.3</b>	<b>100.5</b>
<b>C10</b>	104.6	103.6	105.8	98.3	103.0	103.6	103.7	103.1	107.9	100.6	99.5	95.6	88.8
<b>C11</b>	111.2	103.4	112.8	102.4	106.9	106.0	105.4	109.2	102.9	99.5	102.7	102.1	100.3
<b>C12</b>	66.0	79.0	79.2	70.5	59.9	69.6	78.7	80.6	77.9	66.2	75.6	86.5	88.0
<b>C13</b>	66.4	61.8	62.1	63.9	66.1	62.5	58.0	72.3	61.0	56.3	56.1	52.4	51.5
<b>C14</b>	92.0	88.7	87.8	88.9	91.6	90.2	88.4	87.8	90.0	92.8	77.9	78.4	78.0
<b>C15</b>	70.0	63.7	67.5	66.1	62.7	61.9	62.7	59.3	67.2	66.8	61.9	63.3	60.7
<b>C16</b>	102.6	96.5	91.1	88.7	88.7	87.6	86.2	92.4	87.7	91.5	92.0	89.9	86.9
<b>C17</b>	92.3	89.3	95.7	93.4	94.2	99.9	91.5	97.6	93.4	91.3	81.7	73.7	76.5
<b>C18</b>	95.0	94.8	95.9	93.5	98.6	91.4	87.8	94.6	92.1	94.5	91.4	90.9	87.9
<b>C19</b>	..	..	..	..	..	..	..	..	..	..	..	..	..
<b>C20</b>	100.1	99.1	107.6	108.5	117.1	100.8	109.7	103.7	98.9	109.9	101.9	97.4	91.3
<b>C21</b>	125.5	126.3	116.1	117.7	115.2	114.3	125.7	108.6	121.0	112.2	120.8	117.3	106.8
<b>C22</b>	79.9	81.9	85.2	82.5	84.4	84.1	83.8	84.8	81.6	86.3	85.3	81.5	80.6
<b>C23</b>	101.9	94.3	97.6	86.1	90.0	94.5	85.8	86.5	91.0	95.7	112.3	113.7	99.1
<b>C24</b>	114.9	114.6	118.8	118.1	122.0	100.3	92.9	100.1	94.6	90.5	71.7	72.3	74.2
<b>C25</b>	147.7	143.7	153.6	145.8	145.2	164.3	175.0	162.1	185.4	171.7	166.8	191.1	146.2
<b>C26</b>	125.2	99.7	99.2	94.7	102.2	105.1	101.6	107.8	104.8	111.6	108.7	92.1	106.7
<b>C27</b>	107.9	101.3	92.2	91.3	96.8	98.8	103.0	98.9	103.5	104.8	96.6	98.5	95.9
<b>C28</b>	92.8	90.7	88.0	85.3	85.4	83.9	92.6	95.0	95.9	89.6	93.1	93.4	98.3
<b>C29</b>	120.7	112.1	126.8	114.8	106.7	116.9	116.5	105.5	98.0	102.3	96.0	113.2	111.0
<b>C30</b>	85.4	100.8	99.4	98.2	94.4	87.5	133.1	100.9	113.3	99.2	105.5	104.1	125.4
<b>C31</b>	81.4	84.3	79.7	80.0	76.1	75.3	81.5	79.4	81.3	79.5	80.8	80.2	88.4
<b>C32</b>	123.2	119.8	119.0	116.8	120.2	116.8	109.7	99.7	130.1	121.8	133.5	110.7	133.1
<b>C33</b>	111.7	103.8	126.2	114.8	113.7	110.6	110.8	121.9	133.9	107.4	113.8	127.4	108.0
<b>D</b>	<b>80.6</b>	<b>75.5</b>	<b>85.6</b>	<b>90.7</b>	<b>69.2</b>	<b>86.2</b>	<b>71.5</b>	<b>89.2</b>	<b>84.4</b>	<b>77.6</b>	<b>62.8</b>	<b>75.8</b>	<b>78.4</b>
<b>D35</b>	80.6	75.5	85.6	90.7	69.2	86.2	71.5	89.2	84.4	77.6	62.8	75.8	78.4

\* Preliminary data.

„..“ - Confidential data.

**INDUSTRIAL PRODUCTION INDICES**  
**IN FEBRUARY 2025**

**Table 4**

**Industrial Production Indices**  
**(Calendar-adjusted, 2021 = 100)**

NACE.BG - 2008	2024											2025	
	II	III	IV	V	VI	VII	VIII	IX	X	XI	XII	I	II*
<b>B_TO_E36</b>	<b>94.0</b>	<b>101.8</b>	<b>98.8</b>	<b>94.8</b>	<b>101.3</b>	<b>103.1</b>	<b>98.6</b>	<b>102.7</b>	<b>106.0</b>	<b>104.9</b>	<b>101.7</b>	<b>90.8</b>	<b>89.6</b>
<b>B</b>	<b>76.4</b>	<b>79.7</b>	<b>78.3</b>	<b>70.8</b>	<b>74.1</b>	<b>80.8</b>	<b>101.3</b>	<b>119.5</b>	<b>95.8</b>	<b>92.5</b>	<b>119.3</b>	<b>82.6</b>	<b>75.0</b>
<b>B05</b>	37.1	40.2	25.9	17.5	24.2	51.3	44.0	48.8	40.9	71.6	112.5	55.1	45.5
<b>B06</b>	..	..	..	..	..	..	..	..	..	..	..	..	..
<b>B07</b>	99.4	97.6	109.8	96.7	97.2	87.6	115.5	137.9	109.8	96.3	124.1	92.4	84.7
<b>B08</b>	85.4	93.8	96.7	92.4	93.7	92.4	90.9	86.0	95.7	96.1	78.6	62.8	52.2
<b>B09</b>	..	..	..	..	..	..	..	..	..	..	..	..	..
<b>C</b>	<b>98.6</b>	<b>108.5</b>	<b>105.7</b>	<b>102.0</b>	<b>111.4</b>	<b>108.7</b>	<b>103.6</b>	<b>107.0</b>	<b>115.6</b>	<b>111.3</b>	<b>102.6</b>	<b>93.4</b>	<b>91.6</b>
<b>C10</b>	92.4	104.5	102.6	97.2	103.9	103.2	104.8	106.7	119.7	103.4	103.0	87.3	76.8
<b>C11</b>	80.9	96.5	109.8	103.9	127.7	131.0	129.8	120.3	95.7	90.4	95.0	74.6	72.5
<b>C12</b>	43.8	80.0	85.4	80.9	72.5	87.8	84.7	90.1	82.5	64.3	73.8	52.9	60.3
<b>C13</b>	67.0	66.0	60.5	67.4	71.4	63.0	47.3	73.6	64.6	59.2	51.5	47.5	51.2
<b>C14</b>	92.2	89.7	79.1	81.9	98.0	102.0	82.5	87.0	92.4	95.5	73.8	80.9	77.4
<b>C15</b>	67.8	68.5	64.4	62.0	66.9	68.0	50.8	58.2	74.7	77.4	56.9	62.6	58.5
<b>C16</b>	91.5	98.0	91.7	92.8	93.3	93.6	83.5	95.4	93.9	97.6	86.3	76.1	77.3
<b>C17</b>	88.1	93.1	93.2	93.4	97.9	103.2	85.9	96.7	99.8	95.7	75.1	69.2	71.1
<b>C18</b>	86.6	96.6	94.2	93.4	101.9	90.8	81.1	91.3	98.9	107.0	96.9	81.8	79.6
<b>C19</b>	..	..	..	..	..	..	..	..	..	..	..	..	..
<b>C20</b>	94.9	108.6	109.4	107.6	120.8	101.5	104.6	102.3	99.4	112.4	100.9	91.7	86.1
<b>C21</b>	116.3	139.0	115.8	115.8	123.5	111.2	114.6	100.4	129.4	112.0	127.1	114.0	96.1
<b>C22</b>	75.6	85.9	84.4	82.7	88.7	87.9	79.0	87.6	89.9	88.0	77.4	74.7	75.6
<b>C23</b>	85.1	93.3	99.9	91.0	95.3	102.8	89.8	91.9	101.3	101.8	103.3	84.9	83.3
<b>C24</b>	112.2	122.7	119.3	119.5	123.3	97.3	83.1	95.6	97.8	92.8	65.1	70.9	71.8
<b>C25</b>	132.3	144.3	156.8	142.0	152.8	176.9	173.4	162.4	196.3	189.1	173.3	153.8	126.9
<b>C26</b>	122.2	102.6	97.8	92.2	107.3	109.0	89.8	108.5	117.4	116.6	104.3	85.5	104.7
<b>C27</b>	108.6	107.4	89.6	85.7	104.9	103.2	96.1	101.2	110.3	112.3	86.6	91.6	95.6
<b>C28</b>	89.6	96.3	90.0	84.2	90.9	87.4	81.5	96.7	104.7	94.1	89.5	83.7	96.0
<b>C29</b>	122.9	119.2	125.0	110.8	108.4	107.9	103.6	107.9	105.7	114.2	84.9	115.7	114.1
<b>C30</b>	80.4	113.2	104.1	99.7	104.3	89.0	130.0	97.0	123.5	97.1	89.7	81.5	124.3
<b>C31</b>	75.1	87.2	78.2	79.0	81.2	77.9	77.7	80.4	88.0	84.5	81.6	70.2	83.0
<b>C32</b>	108.1	121.2	115.3	114.4	137.5	117.7	110.0	103.7	144.1	130.0	122.4	95.2	117.3
<b>C33</b>	95.7	104.3	114.9	108.9	116.9	112.0	107.8	128.1	141.5	117.3	150.2	94.3	91.7
<b>D</b>	<b>81.5</b>	<b>81.5</b>	<b>72.0</b>	<b>70.0</b>	<b>64.1</b>	<b>91.9</b>	<b>76.2</b>	<b>77.3</b>	<b>73.8</b>	<b>86.8</b>	<b>81.8</b>	<b>87.2</b>	<b>90.6</b>
<b>D35</b>	81.5	81.5	72.0	70.0	64.1	91.9	76.2	77.3	73.8	86.8	81.8	87.2	90.6

\* Preliminary data.

„..“ - Confidential data.