

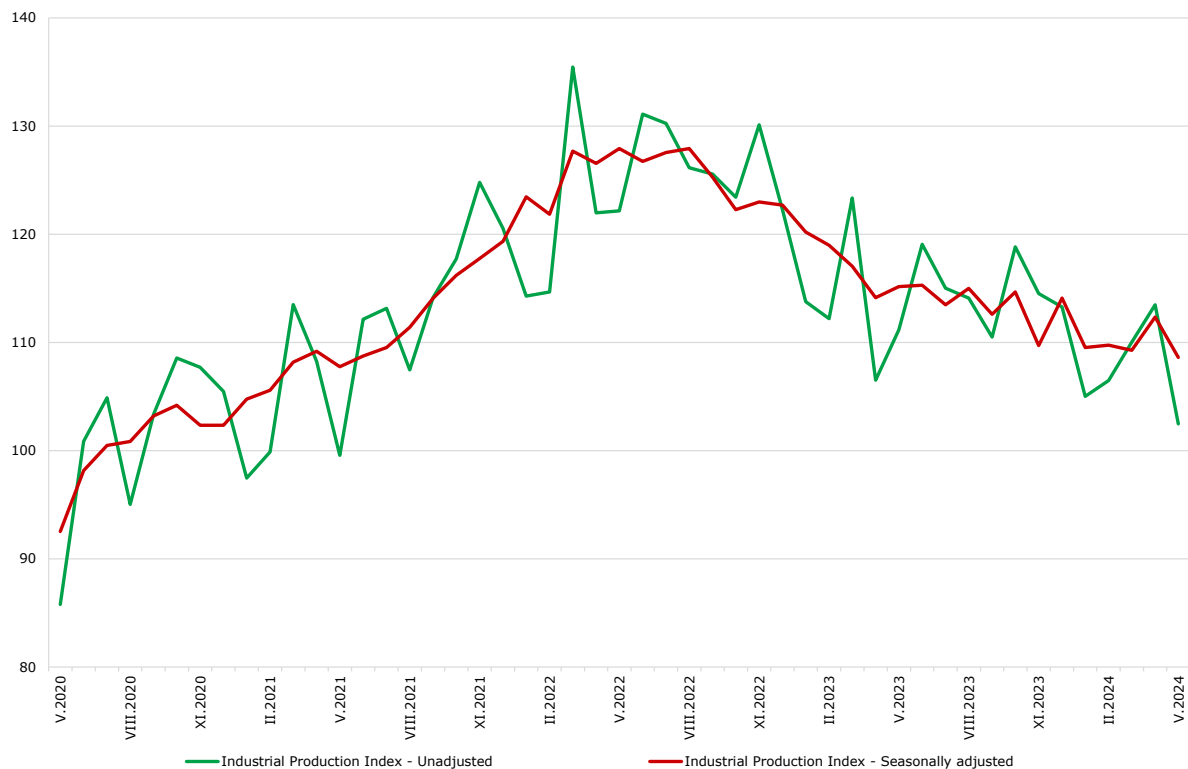


INDUSTRIAL PRODUCTION INDICES IN MAY 2024

The Industrial Production Index decreased by 3.3% in May 2024 compared to the previous month. The data are preliminary and seasonally adjusted.

In comparison with May 2023, a decrease of 6.3% was registered in the calendar-adjusted Industrial Production Index.

Figure 1. Industrial Production Indices (2015 = 100)



Monthly changes

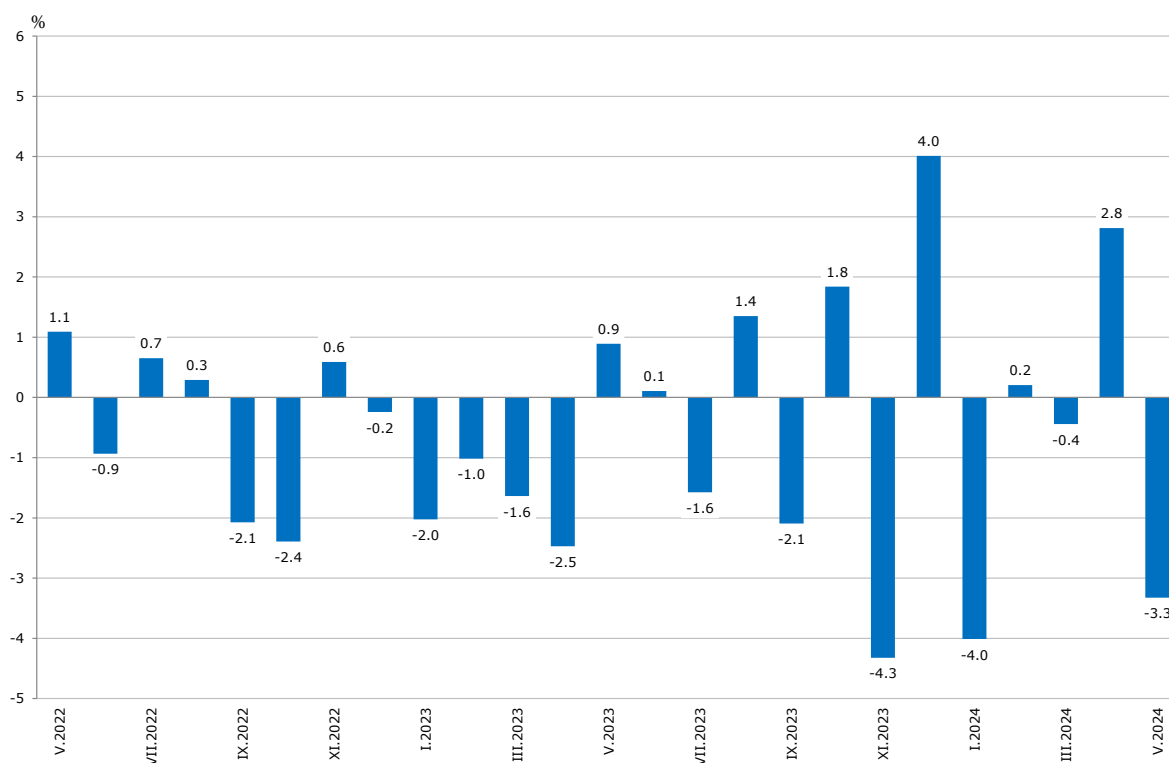
In May 2024, compared to the previous month, a decrease was seen in the mining and quarrying industry - by 10.2%, in the electricity, gas, steam and air conditioning supply - by 5.3%, and in the manufacturing - by 2.3%.

A more significant decline in the manufacturing was registered in the manufacture of other non-metallic mineral products - by 11.7%, in the manufacture of motor vehicles, trailers and semi-trailers - by 11.5%, and in the manufacture of tobacco products - by 10.4%.

INDUSTRIAL PRODUCTION INDICES IN MAY 2024

An increase was reported in the manufacture of chemicals and chemical products - by 6.2%, in the manufacture of textiles - by 2.7%, and in the manufacture of wearing apparel - by 1.4%.

**Figure 2. Changes of Industrial Production Indices compared to the previous month
(Seasonally adjusted)**



Annual changes

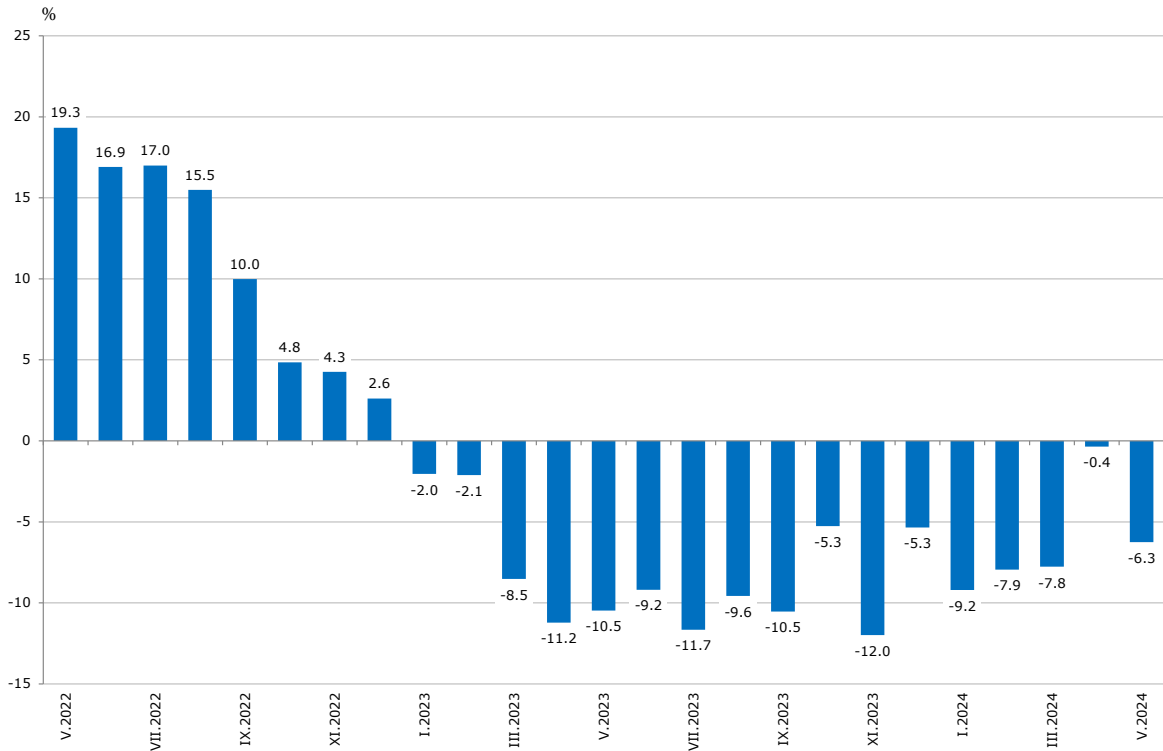
On an annual basis, a drop of the Industrial Production Index was observed in the mining and quarrying industry - by 15.6%, in the manufacturing - by 6.0%, and in the electricity, gas, steam and air conditioning supply - by 1.1%.

The most significant production decrease in the manufacturing, compared to the same month of the previous year, was registered in the manufacture of other transport equipment - by 29.9%, in the manufacture of leather and related products - by 26.9%, in the manufacture of computer, electronic and optical products - by 25.2%, in other manufacturing - by 24.5%, in the manufacture of electrical equipment - by 21.9%, and in the manufacture of machinery and equipment n.e.c. - by 21.0%.

A growth was observed in the manufacture of chemicals and chemical products - by 27.5%, in the manufacture of basic metals - by 19.1%, and in the manufacture of basic pharmaceutical products and pharmaceutical preparations - by 11.7%.

INDUSTRIAL PRODUCTION INDICES IN MAY 2024

Figure 3. Changes of Industrial Production Indices compared to the same month of the previous year (Calendar-adjusted)



Methodological notes

Monthly indices of industrial production are calculated in accordance with the requirements of Regulation (EU) 2019/2152 of the European Parliament and of the Council on European business statistics.

The Monthly Industrial Production and Industrial Turnover Indices measure changes in production and turnover values of industrial enterprises. This information can be used to assess the current economic development and for short-term forecasts. Indices do not measure the actual production level; they aim to measure the average change in the value of production between two points in time. Indices are compiled based on information collected through a representative sampling survey on industrial enterprises. The sample covers enterprises with an annual turnover of more than 97% of the total turnover in the industry.

Industrial Production Indices are calculated at a constant base year that is to say they are weighted with the structure of the value added at factor costs in the base year.

Seasonal adjustment is a statistical method, which eliminates the seasonal component of the time series.

Calendar-adjustment is an adjustment for variations caused by calendar effects, different number of calendar and working days in the months, national holidays and outliers (for example, the presence of more non-working days in May could contribute to the decline in production in some activities).

INDUSTRIAL PRODUCTION INDICES IN MAY 2024

Annex

Table 1

Changes of Industrial Production Indices compared to the previous month¹

(Per cent)

Economic activities	NACE.BG - 2008	2023	2024				
		XII	I	II	III	IV	V*
Industry	B_TO_E36	4.0	-4.0	0.2	-0.4	2.8	-3.3
Mining and quarrying	B	10.6	-11.1	-9.7	1.8	4.0	-10.2
Mining of coal and lignite	B05	17.7	-25.5	-33.0	35.7	-0.5	-17.9
Extraction of crude petroleum and natural gas	B06
Mining of metal ores	B07	3.0	-4.0	-6.0	-1.7	3.7	-4.1
Other mining and quarrying	B08	3.7	-1.0	20.0	-8.0	1.6	-9.7
Mining support service activities	B09
Manufacturing	C	1.6	-2.8	2.1	-0.8	0.5	-2.3
Manufacture of food products	C10	0.2	3.5	-1.9	-0.8	1.9	-6.3
Manufacture of beverages	C11	-5.1	5.0	-0.2	-6.4	8.2	-9.8
Manufacture of tobacco products	C12	3.4	-19.9	19.7	18.7	-0.9	-10.4
Manufacture of textiles	C13	-8.3	-3.7	5.0	-6.5	0.5	2.7
Manufacture of wearing apparel	C14	1.4	-5.7	-2.1	-4.1	-1.0	1.4
Manufacture of leather and related products	C15	-7.6	-15.4	5.0	-9.0	8.7	-4.2
Manufacture of wood and of products of wood and cork, except furniture; manufacture of articles of straw and plaiting materials	C16	-4.0	14.8	5.9	-5.8	-5.7	-3.5
Manufacture of paper and paper products	C17	-5.9	-1.1	1.7	-1.2	6.4	-2.2
Printing and reproduction of recorded media	C18	17.4	-9.5	-2.5	-0.2	0.7	-2.3
Manufacture of coke and refined petroleum products	C19
Manufacture of chemicals and chemical products	C20	5.0	0.3	3.0	-0.4	8.7	6.2
Manufacture of basic pharmaceutical products and pharmaceutical preparations	C21	-10.7	20.3	11.9	1.0	-8.1	0.7
Manufacture of rubber and plastic products	C22	-0.7	-7.2	-1.2	3.3	3.8	-3.1
Manufacture of other non-metallic mineral products	C23	21.9	-12.6	14.4	-7.5	3.0	-11.7
Manufacture of basic metals	C24	-1.5	0.7	9.5	0.7	3.4	-0.2
Manufacture of fabricated metal products, except machinery and equipment	C25	-4.0	15.6	-4.3	-2.6	6.8	-4.8
Manufacture of computer, electronic and optical products	C26	-2.3	14.2	17.9	-20.7	-1.0	-4.7
Manufacture of electrical equipment	C27	5.8	-5.8	10.9	-7.4	-9.6	-1.0
Manufacture of machinery and equipment n.e.c.	C28	5.7	-12.0	7.9	-2.4	-3.2	-3.2
Manufacture of motor vehicles, trailers and semi-trailers	C29	-5.8	14.0	-4.0	-6.5	12.6	-11.5
Manufacture of other transport equipment	C30	9.3	-25.1	11.4	17.8	-0.9	-2.0
Manufacture of furniture	C31	15.4	-6.2	0.1	3.4	-5.5	0.1
Other manufacturing	C32	11.2	-2.4	-10.3	-2.9	-0.8	-1.6
Repair and installation of machinery and equipment	C33	6.9	-5.6	-5.3	-6.9	21.6	-8.9
Electricity, gas, steam and air conditioning supply	D	13.1	-5.5	-2.7	-8.0	12.8	-5.3
Electricity, gas, steam and air conditioning supply	D35	13.1	-5.5	-2.7	-8.0	12.8	-5.3

¹ Seasonally adjusted.

* Preliminary data.

„..“ - Confidential data.

INDUSTRIAL PRODUCTION INDICES IN MAY 2024

Table 2

Changes of Industrial Production Indices compared to the same month of the previous year²

(Per cent)

Economic activities	NACE.BG - 2008	2023	2024				
		XII	I	II	III	IV	V*
Industry	B_TO_E36	-5.3	-9.2	-7.9	-7.8	-0.4	-6.3
Mining and quarrying	B	-7.6	-8.3	-20.6	-21.3	-7.7	-15.6
Mining of coal and lignite	B05	-32.5	-43.0	-64.9	-49.5	-50.6	-56.2
Extraction of crude petroleum and natural gas	B06
Mining of metal ores	B07	6.9	30.4	-1.9	-20.0	5.8	-9.1
Other mining and quarrying	B08	-4.6	-22.2	16.4	2.2	13.7	-10.0
Mining support service activities	B09
Manufacturing	C	-7.0	-11.1	-3.7	-5.7	-1.8	-6.0
Manufacture of food products	C10	-4.9	-4.3	-1.0	2.3	0.7	-5.9
Manufacture of beverages	C11	-8.9	-3.4	4.5	-12.2	7.1	-7.0
Manufacture of tobacco products	C12	-14.3	-50.8	-41.2	-2.9	10.0	-5.1
Manufacture of textiles	C13	-27.9	-27.7	-14.9	-22.2	-15.9	-11.8
Manufacture of wearing apparel	C14	-9.8	-12.9	-18.6	-24.5	-18.7	-14.9
Manufacture of leather and related products	C15	-13.6	-26.6	-17.1	-39.9	-21.5	-26.9
Manufacture of wood and of products of wood and cork, except furniture; manufacture of articles of straw and plaiting materials	C16	-16.7	1.5	9.6	0.3	1.6	-7.3
Manufacture of paper and paper products	C17	-11.1	-14.3	-6.1	-8.6	5.0	1.7
Printing and reproduction of recorded media	C18	23.8	8.8	7.5	2.0	8.5	3.4
Manufacture of coke and refined petroleum products	C19
Manufacture of chemicals and chemical products	C20	-17.6	-13.3	1.1	-1.9	7.3	27.5
Manufacture of basic pharmaceutical products and pharmaceutical preparations	C21	-28.3	6.7	19.7	34.3	10.2	11.7
Manufacture of rubber and plastic products	C22	-4.3	-13.8	-13.9	-9.1	-3.0	-9.3
Manufacture of other non-metallic mineral products	C23	-3.4	-25.9	-5.0	-11.2	5.8	-8.1
Manufacture of basic metals	C24	-7.5	2.4	23.9	19.8	34.4	19.1
Manufacture of fabricated metal products, except machinery and equipment	C25	7.6	-2.7	11.5	-1.7	9.0	3.0
Manufacture of computer, electronic and optical products	C26	-18.8	-15.1	7.9	-19.6	-19.9	-25.2
Manufacture of electrical equipment	C27	-12.4	-18.0	-2.8	-9.7	-22.5	-21.9
Manufacture of machinery and equipment n.e.c.	C28	-4.8	-21.0	-11.9	-14.3	-13.5	-21.0
Manufacture of motor vehicles, trailers and semi-trailers	C29	-22.0	5.4	2.4	-11.8	4.7	-10.5
Manufacture of other transport equipment	C30	-29.7	-51.4	-38.1	-29.1	-23.1	-29.9
Manufacture of furniture	C31	-4.4	0.3	-3.3	3.3	-13.4	-4.3
Other manufacturing	C32	-13.6	-14.6	-17.2	-26.8	-22.2	-24.5
Repair and installation of machinery and equipment	C33	15.4	-14.2	-5.9	-6.6	2.9	-3.7
Electricity, gas, steam and air conditioning supply	D	4.8	-0.2	-24.1	-12.5	9.9	-1.1
Electricity, gas, steam and air conditioning supply	D35	4.8	-0.2	-24.1	-12.5	9.9	-1.1

² Calendar-adjusted.

* Preliminary data.

„..“ - Confidential data.

INDUSTRIAL PRODUCTION INDICES IN MAY 2024

Table 3

Industrial Production Indices (Seasonally adjusted, 2015 = 100)

NACE.BG - 2008	2023								2024				
	V	VI	VII	VIII	IX	X	XI	XII	I	II	III	IV	V*
B_TO_E36	115.2	115.3	113.5	115.0	112.6	114.7	109.7	114.1	109.5	109.8	109.3	112.3	108.6
B	102.7	105.8	97.6	102.9	100.4	109.5	103.5	114.4	101.7	91.9	93.6	97.3	87.4
B05	53.9	48.4	57.5	57.9	48.0	58.0	52.6	61.9	46.1	30.9	42.0	41.8	34.3
B06
B07	136.3	143.3	133.0	139.4	142.2	145.6	145.5	149.9	143.9	135.3	133.0	137.9	132.2
B08	141.4	142.0	126.1	125.7	117.2	142.8	123.7	128.3	127.0	152.5	140.3	142.5	128.7
B09
C	126.7	126.1	126.8	128.4	125.5	126.2	122.3	124.3	120.9	123.5	122.4	123.0	120.1
C10	117.6	109.5	114.0	114.1	116.3	119.5	116.0	116.2	120.2	118.0	117.1	119.3	111.8
C11	102.2	101.9	103.6	100.9	101.1	101.6	107.5	102.1	107.2	106.9	100.1	108.3	97.7
C12	28.9	29.5	22.4	35.3	30.1	23.3	26.6	27.5	22.0	26.4	31.3	31.0	27.8
C13	83.0	80.4	78.9	84.9	77.9	74.3	81.2	74.5	71.8	75.4	70.5	70.9	72.8
C14	74.7	78.3	73.0	70.2	76.0	73.1	70.8	71.8	67.7	66.3	63.6	62.9	63.8
C15	64.0	64.1	56.2	57.9	60.0	54.3	60.9	56.3	47.6	50.0	45.5	49.4	47.4
C16	78.8	74.8	73.2	70.7	69.9	74.7	73.1	70.2	80.6	85.3	80.3	75.8	73.1
C17	94.2	97.5	90.1	84.1	95.4	97.3	98.1	92.3	91.3	92.9	91.8	97.6	95.5
C18	105.3	109.4	104.0	102.3	107.3	105.6	107.6	126.3	114.4	111.5	111.3	112.1	109.5
C19
C20	109.8	106.6	111.4	119.7	120.2	134.9	111.2	116.8	117.1	120.7	120.2	130.6	138.8
C21	125.1	127.8	125.6	130.3	131.7	135.5	124.1	110.7	133.3	149.1	150.6	138.4	139.4
C22	131.9	127.0	123.3	122.0	126.0	125.0	126.2	125.4	116.4	115.0	118.8	123.3	119.4
C23	109.8	105.3	108.6	107.0	103.5	103.3	99.3	121.1	105.8	121.0	112.0	115.4	101.9
C24	107.6	107.3	107.1	117.0	124.4	113.8	112.4	110.7	111.6	122.2	123.0	127.2	127.0
C25	173.7	169.8	180.5	189.4	158.2	186.9	170.7	163.9	189.4	181.3	176.5	188.5	179.5
C26	272.4	261.2	246.0	258.3	229.5	216.7	211.1	206.2	235.5	277.7	220.3	218.1	207.9
C27	168.7	177.5	172.3	170.3	159.0	151.1	147.0	155.6	146.6	162.6	150.5	136.1	134.7
C28	123.5	116.7	115.7	109.9	115.9	109.8	107.4	113.5	99.8	107.8	105.2	101.9	98.6
C29	171.0	164.0	161.1	172.4	162.8	177.9	156.6	147.5	168.2	161.4	150.9	169.9	150.4
C30	313.2	291.4	307.3	329.8	286.5	243.4	213.4	233.2	174.7	194.6	229.3	227.2	222.6
C31	88.5	94.4	85.8	82.9	80.4	76.9	80.1	92.5	86.7	86.8	89.7	84.8	84.9
C32	216.6	215.9	220.3	225.9	193.2	206.7	178.5	198.5	193.7	173.7	168.6	167.3	164.6
C33	130.1	130.1	120.1	131.7	127.1	136.2	127.1	136.0	128.4	121.6	113.2	137.6	125.4
D	70.1	75.5	68.7	70.5	70.7	68.4	67.5	76.3	72.2	70.2	64.6	72.8	69.0
D35	70.1	75.5	68.7	70.5	70.7	68.4	67.5	76.3	72.2	70.2	64.6	72.8	69.0

* Preliminary data.

... - Confidential data.

INDUSTRIAL PRODUCTION INDICES IN MAY 2024

Table 4

Industrial Production Indices (Calendar-adjusted, 2015 = 100)

NACE.BG - 2008	2023							2024					
	V	VI	VII	VIII	IX	X	XI	XII	I	II	III	IV	V*
B_TO_E36	110.5	118.0	117.2	112.5	112.3	119.1	113.5	117.1	104.0	104.0	112.7	109.4	103.5
B	96.2	102.0	94.1	100.3	104.5	121.6	111.3	126.5	99.0	87.4	91.1	89.7	81.3
B05	35.6	28.4	50.2	53.8	53.3	78.4	67.0	79.1	60.5	33.1	35.9	23.1	15.6
B06
B07	135.9	153.7	117.9	135.3	141.5	147.9	146.1	164.4	140.9	126.3	124.0	139.5	123.6
B08	146.8	153.5	132.3	130.6	125.6	162.5	137.7	130.1	91.3	122.2	134.1	138.5	132.1
B09
C	127.2	132.6	131.9	123.3	126.8	134.6	125.8	121.1	109.3	113.9	126.5	123.3	119.6
C10	117.8	110.7	113.5	115.2	120.7	130.7	119.7	120.2	110.2	104.3	117.9	115.8	110.9
C11	106.4	122.1	128.1	125.6	109.7	95.2	99.4	94.5	77.7	77.7	92.7	105.6	98.9
C12	33.2	39.2	24.5	41.1	34.2	23.7	24.2	24.5	12.8	17.1	31.2	33.3	31.5
C13	87.3	85.5	78.3	71.6	76.6	78.4	87.4	69.2	66.2	76.8	75.7	69.3	77.0
C14	69.4	83.2	82.1	65.4	75.2	74.5	70.2	69.0	70.6	66.4	64.6	56.9	59.1
C15	60.0	69.3	62.5	46.1	59.9	57.4	67.8	51.5	46.0	48.1	48.6	47.0	43.9
C16	82.3	79.1	78.5	69.3	72.2	80.0	77.9	65.7	67.9	76.1	81.5	76.2	76.3
C17	94.5	101.6	91.7	79.4	93.6	103.6	102.4	86.5	90.6	90.4	95.9	95.3	96.1
C18	105.9	111.9	103.7	95.8	103.1	112.9	120.9	133.8	102.8	101.4	113.4	110.2	109.4
C19
C20	108.4	108.9	112.7	113.8	118.3	136.4	113.6	116.1	111.3	115.2	132.0	132.7	138.2
C21	122.2	137.6	124.9	115.7	127.3	143.0	131.3	117.1	130.2	138.4	165.5	137.8	136.5
C22	132.4	132.5	128.1	115.0	128.6	137.8	127.2	112.6	107.9	109.5	124.7	122.4	120.1
C23	117.7	112.3	117.4	112.8	110.9	115.1	106.8	108.7	76.2	100.7	110.3	118.4	108.1
C24	106.8	105.0	106.8	109.9	119.7	121.1	116.0	108.9	114.6	119.6	130.8	127.2	127.2
C25	170.1	180.0	193.1	185.0	159.1	195.0	187.4	171.8	148.2	162.5	177.2	192.6	175.1
C26	271.2	275.0	254.3	229.9	229.4	243.0	218.9	194.7	223.3	269.0	225.8	215.4	202.9
C27	163.3	192.8	180.4	155.7	163.7	158.8	154.1	140.8	134.6	161.4	159.6	133.2	127.5
C28	122.7	124.9	122.2	95.8	116.6	117.2	113.5	108.1	89.3	103.4	111.2	104.0	97.0
C29	164.8	169.1	149.2	150.6	167.9	197.3	172.2	134.6	168.3	162.5	157.6	165.2	147.5
C30	315.0	323.5	337.7	294.2	281.2	250.8	208.3	197.0	136.5	179.3	252.5	232.1	220.8
C31	86.9	101.4	90.1	78.2	81.5	82.3	85.1	92.7	76.4	79.6	92.3	82.8	83.2
C32	213.3	247.7	222.7	226.9	203.4	225.1	189.6	179.4	168.5	151.9	170.2	162.0	160.9
C33	123.4	133.9	122.1	128.8	133.5	141.7	139.7	179.8	93.8	104.2	113.6	125.1	118.8
D	51.5	68.2	70.9	74.0	59.4	59.9	67.6	100.0	87.9	71.0	71.0	62.7	50.9
D35	51.5	68.2	70.9	74.0	59.4	59.9	67.6	100.0	87.9	71.0	71.0	62.7	50.9

* Preliminary data.

„..“ - Confidential data.