

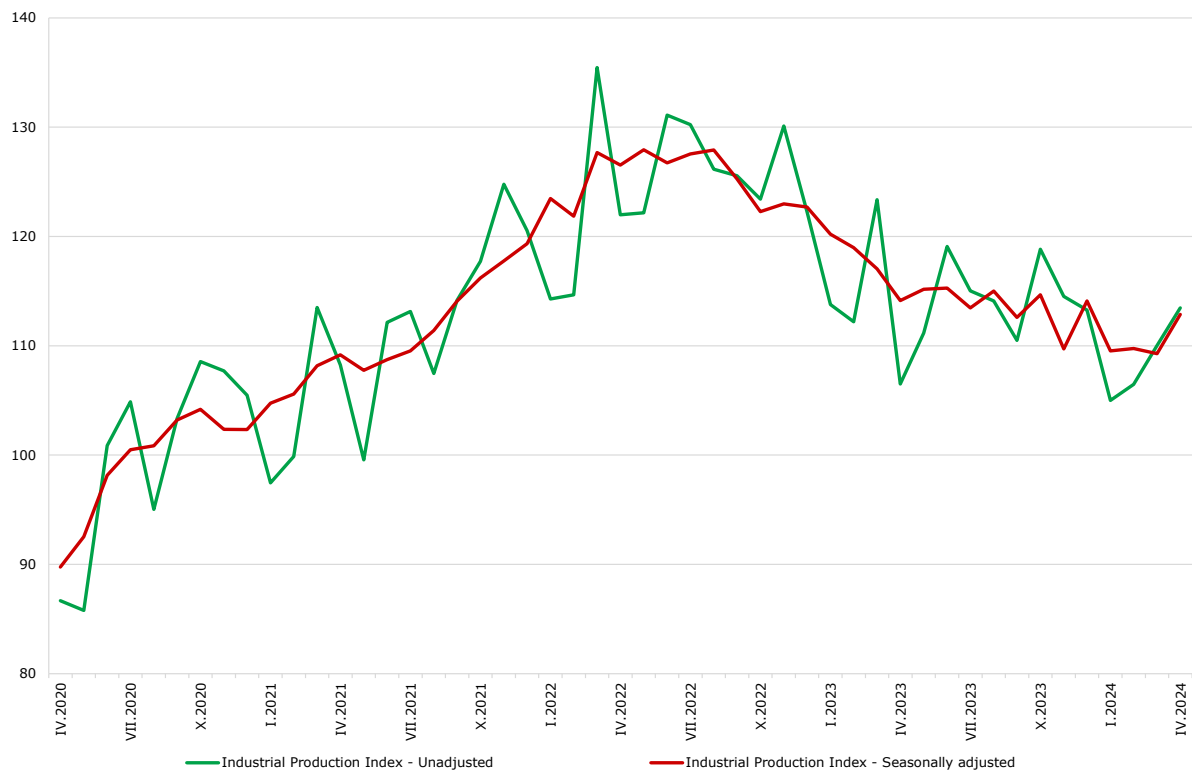


INDUSTRIAL PRODUCTION INDICES IN APRIL 2024

The Industrial Production Index increased by 3.3% in April 2024 compared to the previous month. The data are preliminary and seasonally adjusted.

In comparison with April 2023, a decrease of 0.3% was registered in the calendar-adjusted Industrial Production Index.

Figure 1. Industrial Production Indices (2015 = 100)



INDUSTRIAL PRODUCTION INDICES IN APRIL 2024

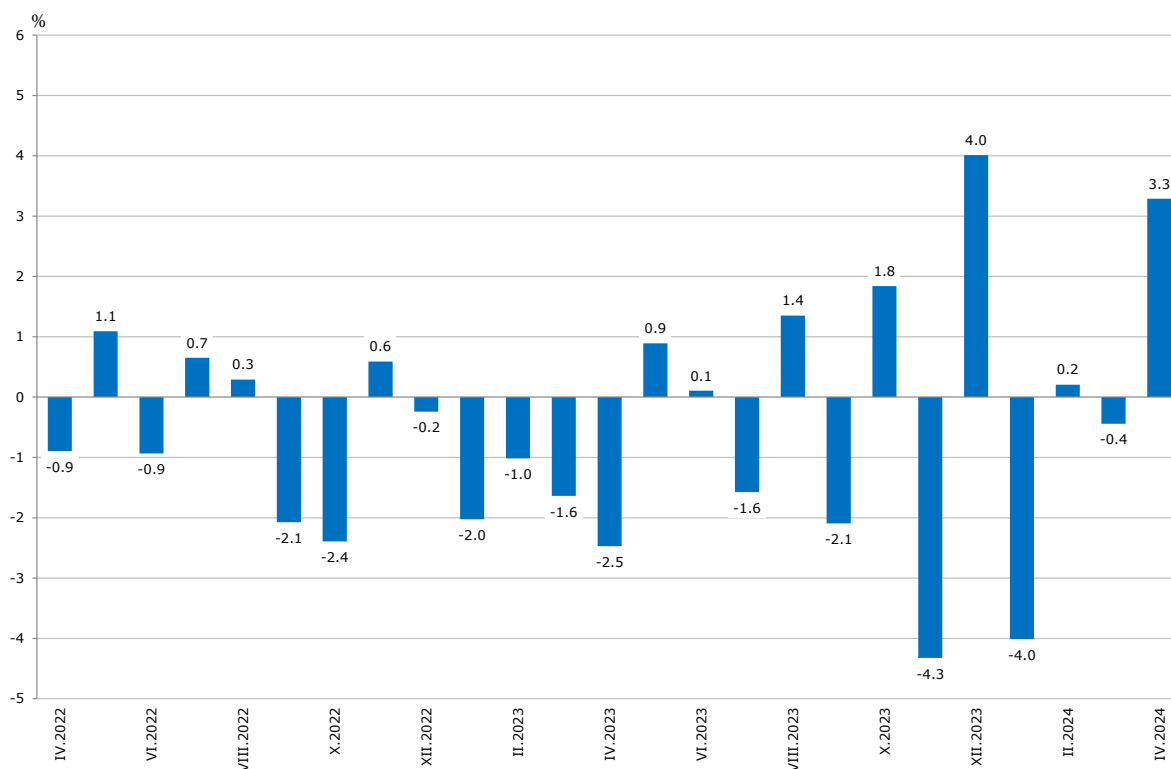
Monthly changes

In April 2024, compared to the previous month, a growth was seen in the electricity, gas, steam and air conditioning supply - by 13.8%, in the mining and quarrying industry - by 4.2%, and in the manufacturing - by 0.9%.

A more significant increase in manufacturing was registered in the repair and installation of machinery and equipment - by 21.5%, and in the manufacture of motor vehicles, trailers and semi-trailers - by 13.2%.

A decrease was reported in manufacture of electrical equipment - by 9.2%, and in the manufacture of basic pharmaceutical products and pharmaceutical preparations - by 7.6%, manufacture of wood and of products of wood and cork, except furniture; manufacture of articles of straw and plaiting materials - by 5.4%.

Figure 2. Changes of Industrial Production Indices compared to the previous month
(Seasonally adjusted)



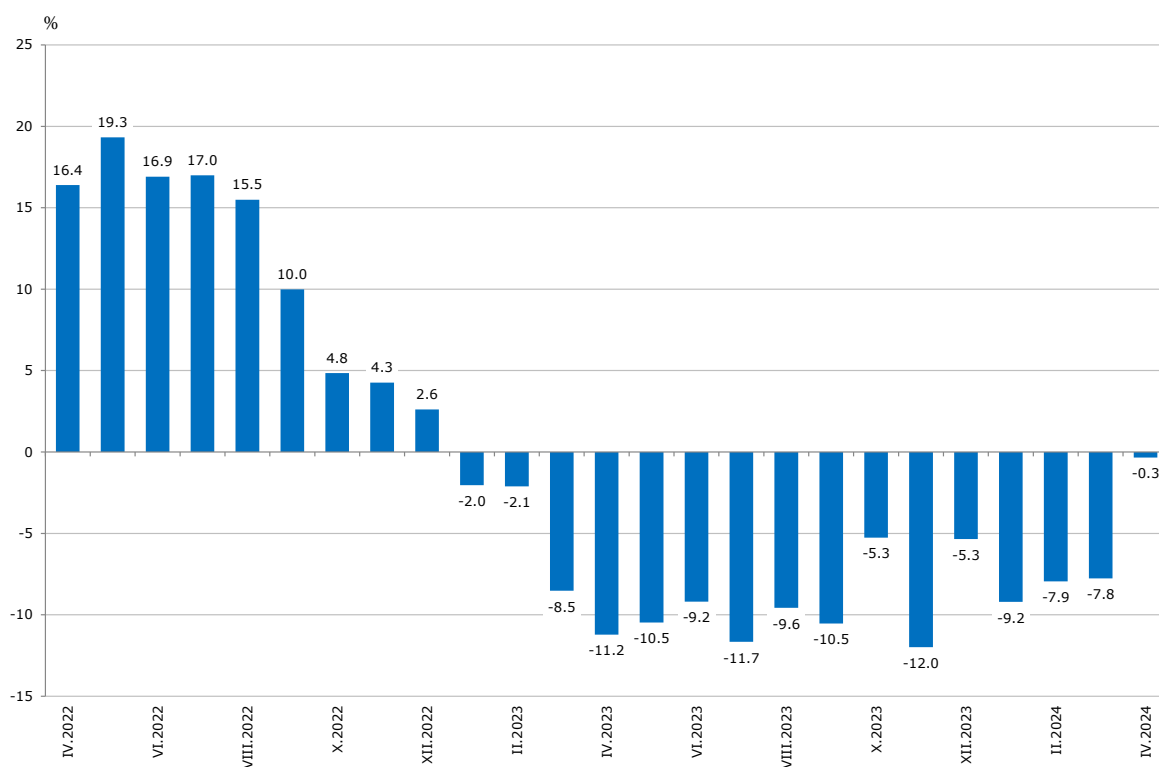
Annual changes

On an annual basis, a drop of the Industrial Production Index was observed in the mining and quarrying industry - by 7.7%, and in the manufacturing - by 1.9%, while the electricity, gas, steam and air conditioning supply increased - by 10.6%.

A most significant production decrease in manufacturing, compared to the same month of the previous year, was registered in the manufacture of leather and related products - by 23.5%, in the manufacture of other transport equipment - by 23.1%, in the manufacture of electrical equipment - by 22.8%, and in the other manufacturing - by 22.2%.

An increase was observed in the manufacture of basic metals - by 34.7%, manufacture of basic pharmaceutical products and pharmaceutical preparations - by 11.1%, and in the manufacture of tobacco products - by 10.0%.

**Figure 3. Changes of Industrial Production Indices compared to the same month of the previous year
(Calendar-adjusted)**



Methodological notes

Monthly indices of industrial production are calculated in accordance with the requirements of Regulation (EU) 2019/2152 of the European Parliament and of the Council on European business statistics.

The Monthly Industrial Production and Industrial Turnover Indices measure changes in production and turnover values of industrial enterprises. This information can be used to assess the current economic development and for short-term forecasts. Indices do not measure the actual production level; they aim to measure the average change in the value of production between two points in time. Indices are compiled based on information collected through a representative sampling survey on industrial enterprises. The sample covers enterprises with an annual turnover of more than 97% of the total turnover in the industry.

Industrial Production Indices are calculated at a constant base year that is to say they are weighted with the structure of the value added at factor costs in the base year.

Seasonal adjustment is a statistical method, which eliminates the seasonal component of the time series.

Calendar-adjustment is an adjustment for variations caused by calendar effects, different number of calendar and working days in the months, national holidays and outliers (for example, the presence of more non-working days in May could contribute to the decline in production in some activities).

INDUSTRIAL PRODUCTION INDICES IN APRIL 2024

Annex

Table 1

Changes of Industrial Production Indices compared to the previous month¹

(Per cent)

Economic activities	NACE.BG - 2008	2023		2024			
		XI	XII	I	II	III	IV*
Industry	B_TO_E36	-4.3	4.0	-4.0	0.2	-0.4	3.3
Mining and quarrying	B	-5.5	10.6	-11.1	-9.7	1.8	4.2
Mining of coal and lignite	B05	-9.4	17.7	-25.5	-33.0	35.7	-0.2
Extraction of crude petroleum and natural gas	B06
Mining of metal ores	B07	0.0	3.0	-4.0	-6.0	-1.7	4.8
Other mining and quarrying	B08	-13.4	3.7	-1.0	20.0	-8.0	2.2
Mining support service activities	B09
Manufacturing	C	-3.1	1.6	-2.8	2.1	-0.8	0.9
Manufacture of food products	C10	-2.9	0.2	3.5	-1.9	-0.8	2.2
Manufacture of beverages	C11	5.8	-5.1	5.0	-0.2	-6.4	9.1
Manufacture of tobacco products	C12	14.4	3.4	-19.9	19.7	18.7	-0.2
Manufacture of textiles	C13	9.4	-8.3	-3.7	5.0	-6.5	0.4
Manufacture of wearing apparel	C14	-3.2	1.4	-5.7	-2.1	-4.1	-1.5
Manufacture of leather and related products	C15	12.1	-7.6	-15.4	5.0	-9.0	6.3
Manufacture of wood and of products of wood and cork, except furniture; manufacture of articles of straw and plaiting materials	C16	-2.1	-4.0	14.8	5.9	-5.8	-5.4
Manufacture of paper and paper products	C17	0.8	-5.9	-1.1	1.7	-1.2	6.4
Printing and reproduction of recorded media	C18	1.9	17.4	-9.5	-2.5	-0.2	0.4
Manufacture of coke and refined petroleum products	C19
Manufacture of chemicals and chemical products	C20	-17.5	5.0	0.3	3.0	-0.4	6.9
Manufacture of basic pharmaceutical products and pharmaceutical preparations	C21	-8.4	-10.7	20.3	11.9	1.0	-7.6
Manufacture of rubber and plastic products	C22	1.0	-0.7	-7.2	-1.2	3.3	4.0
Manufacture of other non-metallic mineral products	C23	-3.8	21.9	-12.6	14.4	-7.5	4.1
Manufacture of basic metals	C24	-1.3	-1.5	0.7	9.5	0.7	3.5
Manufacture of fabricated metal products, except machinery and equipment	C25	-8.7	-4.0	15.6	-4.3	-2.6	6.9
Manufacture of computer, electronic and optical products	C26	-2.6	-2.3	14.2	17.9	-20.7	-0.3
Manufacture of electrical equipment	C27	-2.7	5.8	-5.8	10.9	-7.4	-9.2
Manufacture of machinery and equipment n.e.c.	C28	-2.2	5.7	-12.0	7.9	-2.4	-2.9
Manufacture of motor vehicles, trailers and semi-trailers	C29	-12.0	-5.8	14.0	-4.0	-6.5	13.2
Manufacture of other transport equipment	C30	-12.3	9.3	-25.1	11.4	17.8	-1.1
Manufacture of furniture	C31	4.2	15.4	-6.2	0.1	3.4	-4.6
Other manufacturing	C32	-13.6	11.2	-2.4	-10.3	-2.9	-0.6
Repair and installation of machinery and equipment	C33	-6.6	6.9	-5.6	-5.3	-6.9	21.5
Electricity, gas, steam and air conditioning supply	D	-1.3	13.1	-5.5	-2.7	-8.0	13.8
Electricity, gas, steam and air conditioning supply	D35	-1.3	13.1	-5.5	-2.7	-8.0	13.8

¹ Seasonally adjusted.

* Preliminary data.

„..“ - Confidential data.

INDUSTRIAL PRODUCTION INDICES IN APRIL 2024

Table 2

Changes of Industrial Production Indices compared to the same month of the previous year²

(Per cent)

Economic activities	NACE.BG - 2008	2023			2024		
		XI	XII	I	II	III	IV*
Industry	B_TO_E36	-12.0	-5.3	-9.2	-7.9	-7.8	-0.3
Mining and quarrying	B	-12.2	-7.6	-8.3	-20.6	-21.3	-7.7
Mining of coal and lignite	B05	-45.6	-32.5	-43.0	-64.9	-49.5	-50.6
Extraction of crude petroleum and natural gas	B06
Mining of metal ores	B07	18.9	6.9	30.4	-1.9	-20.0	5.6
Other mining and quarrying	B08	-13.7	-4.6	-22.2	16.4	2.2	13.8
Mining support service activities	B09
Manufacturing	C	-7.9	-7.0	-11.1	-3.7	-5.7	-1.9
Manufacture of food products	C10	3.5	-4.9	-4.3	-1.0	2.3	0.6
Manufacture of beverages	C11	-0.2	-8.9	-3.4	4.5	-12.2	6.9
Manufacture of tobacco products	C12	-7.9	-14.3	-50.8	-41.2	-2.9	10.0
Manufacture of textiles	C13	-20.6	-27.9	-27.7	-14.9	-22.2	-15.6
Manufacture of wearing apparel	C14	-11.4	-9.8	-12.9	-18.6	-24.5	-19.1
Manufacture of leather and related products	C15	0.0	-13.6	-26.6	-17.1	-39.9	-23.5
Manufacture of wood and of products of wood and cork, except furniture; manufacture of articles of straw and plaiting materials	C16	-19.8	-16.7	1.5	9.6	0.3	1.7
Manufacture of paper and paper products	C17	-9.8	-11.1	-14.3	-6.1	-8.6	5.0
Printing and reproduction of recorded media	C18	1.3	23.8	8.8	7.5	2.0	8.1
Manufacture of coke and refined petroleum products	C19
Manufacture of chemicals and chemical products	C20	-16.2	-17.6	-13.3	1.1	-1.9	5.4
Manufacture of basic pharmaceutical products and pharmaceutical preparations	C21	4.6	-28.3	6.7	19.7	34.3	11.1
Manufacture of rubber and plastic products	C22	2.8	-4.3	-13.8	-13.9	-9.1	-2.9
Manufacture of other non-metallic mineral products	C23	-22.3	-3.4	-25.9	-5.0	-11.2	6.4
Manufacture of basic metals	C24	8.4	-7.5	2.4	23.9	19.8	34.7
Manufacture of fabricated metal products, except machinery and equipment	C25	-4.6	7.6	-2.7	11.5	-1.7	9.1
Manufacture of computer, electronic and optical products	C26	-13.4	-18.8	-15.1	7.9	-19.6	-19.8
Manufacture of electrical equipment	C27	-15.9	-12.4	-18.0	-2.8	-9.7	-22.8
Manufacture of machinery and equipment n.e.c.	C28	-14.7	-4.8	-21.0	-11.9	-14.3	-13.6
Manufacture of motor vehicles, trailers and semi-trailers	C29	-6.5	-22.0	5.4	2.4	-11.8	4.7
Manufacture of other transport equipment	C30	-42.4	-29.7	-51.4	-38.1	-29.1	-23.1
Manufacture of furniture	C31	-21.4	-4.4	0.3	-3.3	3.3	-12.5
Other manufacturing	C32	-16.4	-13.6	-14.6	-17.2	-26.8	-22.2
Repair and installation of machinery and equipment	C33	8.1	15.4	-14.2	-5.9	-6.6	2.8
Electricity, gas, steam and air conditioning supply	D	-34.6	4.8	-0.2	-24.1	-12.5	10.6
Electricity, gas, steam and air conditioning supply	D35	-34.6	4.8	-0.2	-24.1	-12.5	10.6

² Calendar-adjusted.

* Preliminary data.

„..“ - Confidential data.

INDUSTRIAL PRODUCTION INDICES IN APRIL 2024

Table 3

Industrial Production Indices (Seasonally adjusted, 2015 = 100)

NACE.BG - 2008	2023									2024			
	IV	V	VI	VII	VIII	IX	X	XI	XII	I	II	III	IV*
B_TO_E36	114.1	115.2	115.3	113.5	115.0	112.6	114.7	109.7	114.1	109.5	109.8	109.3	112.9
B	106.1	102.7	105.8	97.6	102.9	100.4	109.5	103.5	114.4	101.7	91.9	93.6	97.5
B05	65.4	53.9	48.4	57.5	57.9	48.0	58.0	52.6	61.9	46.1	30.9	42.0	41.9
B06
B07	135.9	136.3	143.3	133.0	139.4	142.2	145.6	145.5	149.9	143.9	135.3	133.0	139.3
B08	126.9	141.4	142.0	126.1	125.7	117.2	142.8	123.7	128.3	127.0	152.5	140.3	143.3
B09
C	125.9	126.7	126.1	126.8	128.4	125.5	126.2	122.3	124.3	120.9	123.5	122.4	123.4
C10	119.2	117.6	109.5	114.0	114.1	116.3	119.5	116.0	116.2	120.2	118.0	117.1	119.6
C11	103.9	102.2	101.9	103.6	100.9	101.1	101.6	107.5	102.1	107.2	106.9	100.1	109.2
C12	28.5	28.9	29.5	22.4	35.3	30.1	23.3	26.6	27.5	22.0	26.4	31.3	31.3
C13	83.8	83.0	80.4	78.9	84.9	77.9	74.3	81.2	74.5	71.8	75.4	70.5	70.8
C14	76.3	74.7	78.3	73.0	70.2	76.0	73.1	70.8	71.8	67.7	66.3	63.6	62.6
C15	62.8	64.0	64.1	56.2	57.9	60.0	54.3	60.9	56.3	47.6	50.0	45.5	48.3
C16	74.6	78.8	74.8	73.2	70.7	69.9	74.7	73.1	70.2	80.6	85.3	80.3	76.0
C17	93.9	94.2	97.5	90.1	84.1	95.4	97.3	98.1	92.3	91.3	92.9	91.8	97.7
C18	103.2	105.3	109.4	104.0	102.3	107.3	105.6	107.6	126.3	114.4	111.5	111.3	111.8
C19
C20	122.5	109.8	106.6	111.4	119.7	120.2	134.9	111.2	116.8	117.1	120.7	120.2	128.5
C21	125.9	125.1	127.8	125.6	130.3	131.7	135.5	124.1	110.7	133.3	149.1	150.6	139.1
C22	128.9	131.9	127.0	123.3	122.0	126.0	125.0	126.2	125.4	116.4	115.0	118.8	123.5
C23	109.9	109.8	105.3	108.6	107.0	103.5	103.3	99.3	121.1	105.8	121.0	112.0	116.6
C24	96.1	107.6	107.3	107.1	117.0	124.4	113.8	112.4	110.7	111.6	122.2	123.0	127.3
C25	173.9	173.7	169.8	180.5	189.4	158.2	186.9	170.7	163.9	189.4	181.3	176.5	188.7
C26	270.2	272.4	261.2	246.0	258.3	229.5	216.7	211.1	206.2	235.5	277.7	220.3	219.7
C27	171.3	168.7	177.5	172.3	170.3	159.0	151.1	147.0	155.6	146.6	162.6	150.5	136.7
C28	117.3	123.5	116.7	115.7	109.9	115.9	109.8	107.4	113.5	99.8	107.8	105.2	102.1
C29	163.5	171.0	164.0	161.1	172.4	162.8	177.9	156.6	147.5	168.2	161.4	150.9	170.7
C30	292.1	313.2	291.4	307.3	329.8	286.5	243.4	213.4	233.2	174.7	194.6	229.3	226.8
C31	97.7	88.5	94.4	85.8	82.9	80.4	76.9	80.1	92.5	86.7	86.8	89.7	85.6
C32	213.6	216.6	215.9	220.3	225.9	193.2	206.7	178.5	198.5	193.7	173.7	168.6	167.6
C33	135.0	130.1	130.1	120.1	131.7	127.1	136.2	127.1	136.0	128.4	121.6	113.2	137.6
D	68.7	70.1	75.5	68.7	70.5	70.7	68.4	67.5	76.3	72.2	70.2	64.6	73.5
D35	68.7	70.1	75.5	68.7	70.5	70.7	68.4	67.5	76.3	72.2	70.2	64.6	73.5

* Preliminary data.

„..” - Confidential data.

INDUSTRIAL PRODUCTION INDICES IN APRIL 2024

Table 4

Industrial Production Indices (Calendar-adjusted, 2015 = 100)

NACE.BG - 2008	2021	2022	2023									2024			
	IV	IV	IV	V	VI	VII	VIII	IX	X	XI	XII	I	II	III	IV*
B_TO_E36	106.2	123.6	109.8	110.5	118.0	117.2	112.5	112.3	119.1	113.5	117.1	104.0	104.0	112.7	109.4
B	102.0	108.9	97.2	96.2	102.0	94.1	100.3	104.5	121.6	111.3	126.5	99.0	87.4	91.1	89.7
B05	66.9	101.2	46.7	35.6	28.4	50.2	53.8	53.3	78.4	67.0	79.1	60.5	33.1	35.9	23.1
B06
B07	120.5	103.3	131.9	135.9	153.7	117.9	135.3	141.5	147.9	146.1	164.4	140.9	126.3	124.0	139.3
B08	143.8	141.4	121.8	146.8	153.5	132.3	130.6	125.6	162.5	137.7	130.1	91.3	122.2	134.1	138.6
B09
C	115.5	135.5	125.5	127.2	132.6	131.9	123.3	126.8	134.6	125.8	121.1	109.3	113.9	126.5	123.2
C10	110.5	123.4	114.9	117.8	110.7	113.5	115.2	120.7	130.7	119.7	120.2	110.2	104.3	117.9	115.6
C11	91.8	104.0	98.6	106.4	122.1	128.1	125.6	109.7	95.2	99.4	94.5	77.7	77.7	92.7	105.5
C12	44.8	45.7	30.2	33.2	39.2	24.5	41.1	34.2	23.7	24.2	24.5	12.8	17.1	31.2	33.3
C13	112.2	119.4	82.4	87.3	85.5	78.3	71.6	76.6	78.4	87.4	69.2	66.2	76.8	75.7	69.5
C14	64.4	81.1	70.0	69.4	83.2	82.1	65.4	75.2	74.5	70.2	69.0	70.6	66.4	64.6	56.6
C15	71.9	70.0	59.9	60.0	69.3	62.5	46.1	59.9	57.4	67.8	51.5	46.0	48.1	48.6	45.8
C16	84.0	107.1	75.0	82.3	79.1	78.5	69.3	72.2	80.0	77.9	65.7	67.9	76.1	81.5	76.3
C17	97.0	105.7	90.8	94.5	101.6	91.7	79.4	93.6	103.6	102.4	86.5	90.6	90.4	95.9	95.3
C18	113.2	117.9	101.5	105.9	111.9	103.7	95.8	103.1	112.9	120.9	133.8	102.8	101.4	113.4	109.7
C19
C20	100.9	134.1	123.7	108.4	108.9	112.7	113.8	118.3	136.4	113.6	116.1	111.3	115.2	132.0	130.4
C21	109.3	129.6	125.1	122.2	137.6	124.9	115.7	127.3	143.0	131.3	117.1	130.2	138.4	165.5	138.9
C22	147.6	144.5	126.1	132.4	132.5	128.1	115.0	128.6	137.8	127.2	112.6	107.9	109.5	124.7	122.5
C23	114.3	135.4	111.9	117.7	112.3	117.4	112.8	110.9	115.1	106.8	108.7	76.2	100.7	110.3	119.0
C24	123.3	120.8	94.6	106.8	105.0	106.8	109.9	119.7	121.1	116.0	108.9	114.6	119.6	130.8	127.4
C25	130.9	181.5	176.7	170.1	180.0	193.1	185.0	159.1	195.0	187.4	171.8	148.2	162.5	177.2	192.7
C26	198.3	283.1	268.8	271.2	275.0	254.3	229.9	229.4	243.0	218.9	194.7	223.3	269.0	225.8	215.6
C27	156.8	165.0	171.9	163.3	192.8	180.4	155.7	163.7	158.8	154.1	140.8	134.6	161.4	159.6	132.8
C28	114.8	136.5	120.1	122.7	124.9	122.2	95.8	116.6	117.2	113.5	108.1	89.3	103.4	111.2	103.8
C29	134.3	135.1	157.7	164.8	169.1	149.2	150.6	167.9	197.3	172.2	134.6	168.3	162.5	157.6	165.2
C30	258.3	255.1	301.9	315.0	323.5	337.7	294.2	281.2	250.8	208.3	197.0	136.5	179.3	252.5	232.1
C31	100.4	104.2	95.5	86.9	101.4	90.1	78.2	81.5	82.3	85.1	92.7	76.4	79.6	92.3	83.6
C32	134.7	211.4	208.1	213.3	247.7	222.7	226.9	203.4	225.1	189.6	179.4	168.5	151.9	170.2	161.9
C33	96.5	106.5	121.5	123.4	133.9	122.1	128.8	133.5	141.7	139.7	179.8	93.8	104.2	113.6	125.0
D	71.8	85.8	57.1	51.5	68.2	70.9	74.0	59.4	59.9	67.6	100.0	87.9	71.0	71.0	63.2
D35	71.8	85.8	57.1	51.5	68.2	70.9	74.0	59.4	59.9	67.6	100.0	87.9	71.0	71.0	63.2