

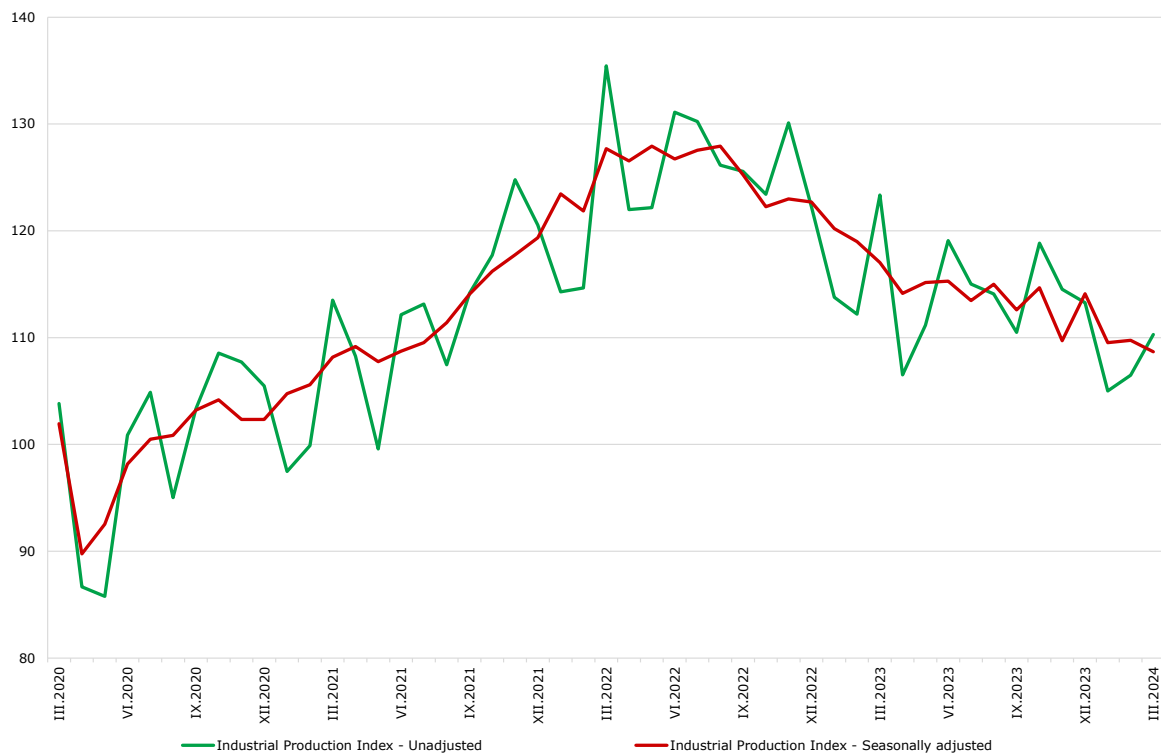


INDUSTRIAL PRODUCTION INDICES IN MARCH 2024

The Industrial Production Index decreased by 1.0% in March 2024 compared to the previous month. The data are preliminary and seasonally adjusted.

In comparison with March 2023, a decline of 7.6% was registered in the calendar-adjusted Industrial Production Index.

Figure 1. Industrial Production Indices (2015 = 100)



INDUSTRIAL PRODUCTION INDICES IN MARCH 2024

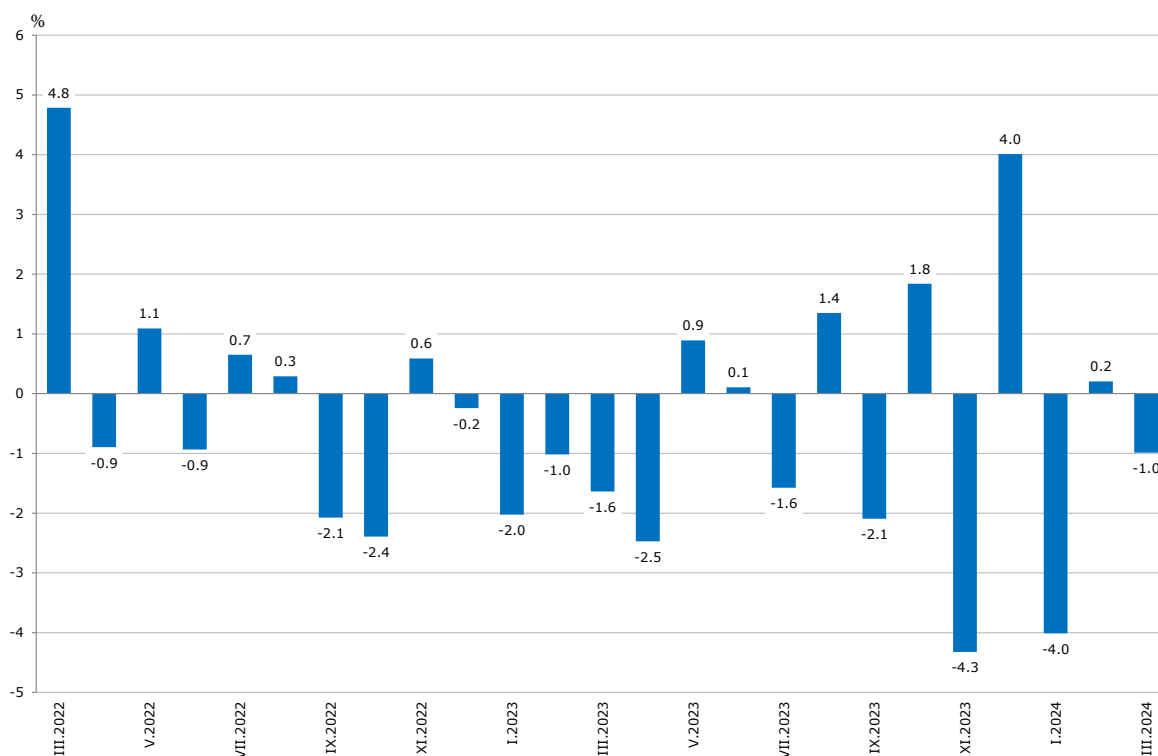
Monthly changes

In March 2024, compared to the previous month, a decrease was registered in the electricity, gas, steam and air conditioning supply - by 5.5%, in the manufacturing - by 1.2%, while an increase was registered in the mining and quarrying industry - by 1.2%.

A more significant decrease in manufacturing was observed in the manufacture of computer, electronic and optical products - by 20.2%, in the manufacture of textiles - by 9.8%, and in the manufacture of leather and related products - by 8.5%.

An increase was reported in manufacture of tobacco products - by 19.4%, and in the manufacture of other transport equipment - by 17.6%.

Figure 2. Changes of Industrial Production Indices compared to the previous month
(Seasonally adjusted)



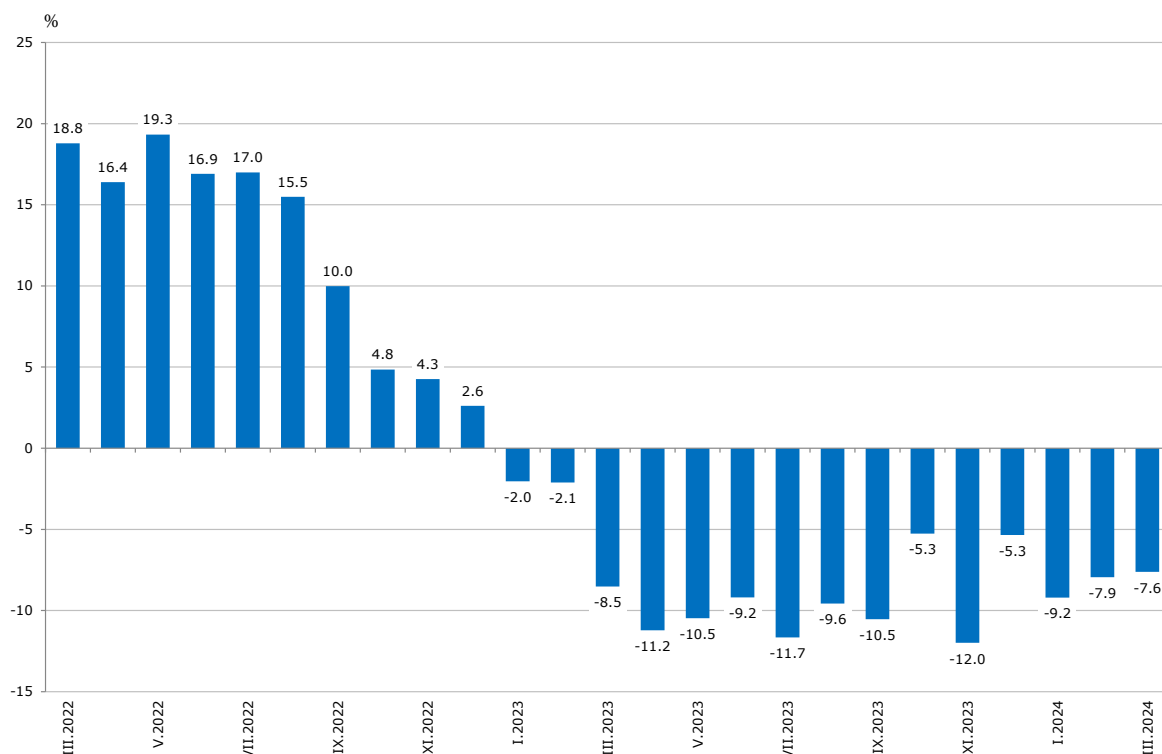
Annual changes

On an annual basis, a drop of the Industrial Production Index was observed in the mining and quarrying industry - by 21.8%, in the electricity, gas, steam and air conditioning supply - by 9.1%, and in the manufacturing - by 5.9%.

A most significant production decrease in manufacturing, compared to the same month of the previous year, was registered in the manufacture of leather and related products - by 39.4%, in the manufacture of other transport equipment - by 29.6%, in the other manufacturing - by 26.7%, in the manufacture of textiles - by 25.6%, and in the manufacture of wearing apparel - by 23.4%.

An increase was registered in the manufacture of basic pharmaceutical products and pharmaceutical preparations - by 29.3%, and in the manufacture of basic metals - by 19.8%.

Figure 3. Changes of Industrial Production Indices compared to the same month of the previous year (Calendar-adjusted)



Methodological notes

Monthly indices of industrial production are calculated in accordance with the requirements of Regulation (EU) 2019/2152 of the European Parliament and of the Council on European business statistics.

The Monthly Industrial Production and Industrial Turnover Indices measure changes in production and turnover values of industrial enterprises. This information can be used to assess the current economic development and for short-term forecasts. Indices do not measure the actual production level; they aim to measure the average change in the value of production between two points in time. Indices are compiled based on information collected through a representative sampling survey on industrial enterprises. The sample covers enterprises with an annual turnover of more than 97% of the total turnover in the industry.

Industrial Production Indices are calculated at a constant base year that is to say they are weighted with the structure of the value added at factor costs in the base year.

Seasonal adjustment is a statistical method, which eliminates the seasonal component of the time series.

Calendar-adjustment is an adjustment for variations caused by calendar effects, different number of calendar and working days in the months, national holidays and outliers (for example, the presence of more non-working days in May could contribute to the decline in production in some activities).

INDUSTRIAL PRODUCTION INDICES IN MARCH 2024

Annex

Table 1

Changes of Industrial Production Indices compared to the previous month¹

(Per cent)

Economic activities	NACE.BG - 2008	2023			2024		
		X	XI	XII	I	II	III*
Industry	B_TO_E36	1.8	-4.3	4.0	-4.0	0.2	-1.0
Mining and quarrying	B	9.1	-5.5	10.6	-11.1	-9.7	1.2
Mining of coal and lignite	B05	20.7	-9.4	17.7	-25.5	-33.0	35.6
Extraction of crude petroleum and natural gas	B06
Mining of metal ores	B07	2.3	0.0	3.0	-4.0	-6.0	-2.4
Other mining and quarrying	B08	21.9	-13.4	3.7	-1.0	20.0	-7.8
Mining support service activities	B09
Manufacturing	C	0.6	-3.1	1.6	-2.8	2.1	-1.2
Manufacture of food products	C10	2.7	-2.9	0.2	3.5	-1.9	-2.7
Manufacture of beverages	C11	0.5	5.8	-5.1	5.0	-0.2	-6.8
Manufacture of tobacco products	C12	-22.7	14.4	3.4	-19.9	19.7	19.4
Manufacture of textiles	C13	-4.7	9.4	-8.3	-3.7	5.0	-9.8
Manufacture of wearing apparel	C14	-3.7	-3.2	1.4	-5.7	-2.1	-2.6
Manufacture of leather and related products	C15	-9.4	12.1	-7.6	-15.4	5.0	-8.5
Manufacture of wood and of products of wood and cork, except furniture; manufacture of articles of straw and plaiting materials	C16	6.8	-2.1	-4.0	14.8	5.9	-5.5
Manufacture of paper and paper products	C17	2.0	0.8	-5.9	-1.1	1.7	-2.0
Printing and reproduction of recorded media	C18	-1.6	1.9	17.4	-9.5	-2.5	0.3
Manufacture of coke and refined petroleum products	C19
Manufacture of chemicals and chemical products	C20	12.2	-17.5	5.0	0.3	3.0	-1.5
Manufacture of basic pharmaceutical products and pharmaceutical preparations	C21	2.9	-8.4	-10.7	20.3	11.9	-1.9
Manufacture of rubber and plastic products	C22	-0.8	1.0	-0.7	-7.2	-1.2	2.5
Manufacture of other non-metallic mineral products	C23	-0.2	-3.8	21.9	-12.6	14.4	-7.4
Manufacture of basic metals	C24	-8.5	-1.3	-1.5	0.7	9.5	0.0
Manufacture of fabricated metal products, except machinery and equipment	C25	18.1	-8.7	-4.0	15.6	-4.3	-1.4
Manufacture of computer, electronic and optical products	C26	-5.6	-2.6	-2.3	14.2	17.9	20.2
Manufacture of electrical equipment	C27	-5.0	-2.7	5.8	-5.8	10.9	-5.5
Manufacture of machinery and equipment n.e.c.	C28	-5.3	-2.2	5.7	-12.0	7.9	-2.4
Manufacture of motor vehicles, trailers and semi-trailers	C29	9.2	-12.0	-5.8	14.0	-4.0	-6.9
Manufacture of other transport equipment	C30	-15.1	-12.3	9.3	-25.1	11.4	17.6
Manufacture of furniture	C31	-4.3	4.2	15.4	-6.2	0.1	4.0
Other manufacturing	C32	7.0	-13.6	11.2	-2.4	-10.3	-2.6
Repair and installation of machinery and equipment	C33	7.1	-6.6	6.9	-5.6	-5.3	-7.4
Electricity, gas, steam and air conditioning supply	D	-3.3	-1.3	13.1	-5.5	-2.7	-5.5
Electricity, gas, steam and air conditioning supply	D35	-3.3	-1.3	13.1	-5.5	-2.7	-5.5

¹ Seasonally adjusted.

* Preliminary data.

„..“ - Confidential data.

INDUSTRIAL PRODUCTION INDICES IN MARCH 2024

Table 2

Changes of Industrial Production Indices compared to the same month of the previous year²

(Per cent)

Economic activities	NACE.BG - 2008	2023			2024		
		X	XI	XII	I	II	III*
Industry	B_TO_E36	-5.3	-12.0	-5.3	-9.2	-7.9	-7.6
Mining and quarrying	B	-1.6	-12.2	-7.6	-8.3	-20.6	-21.8
Mining of coal and lignite	B05	-29.2	-45.6	-32.5	-43.0	-64.9	-49.5
Extraction of crude petroleum and natural gas	B06
Mining of metal ores	B07	24.6	18.9	6.9	30.4	-1.9	-21.1
Other mining and quarrying	B08	1.3	-13.7	-4.6	-22.2	16.4	2.7
Mining support service activities	B09
Manufacturing	C	-5.3	-7.9	-7.0	-11.1	-3.7	-5.9
Manufacture of food products	C10	2.0	3.5	-4.9	-4.3	-1.0	0.1
Manufacture of beverages	C11	-8.8	-0.2	-8.9	-3.4	4.5	-12.0
Manufacture of tobacco products	C12	-49.6	-7.9	-14.3	-50.8	-41.2	-2.7
Manufacture of textiles	C13	-26.7	-20.6	-27.9	-27.7	-14.9	-25.6
Manufacture of wearing apparel	C14	-12.4	-11.4	-9.8	-12.9	-18.6	-23.4
Manufacture of leather and related products	C15	-19.9	0.0	-13.6	-26.6	-17.1	-39.4
Manufacture of wood and of products of wood and cork, except furniture; manufacture of articles of straw and plaiting materials	C16	-14.2	-19.8	-16.7	1.5	9.6	0.7
Manufacture of paper and paper products	C17	-11.4	-9.8	-11.1	-14.3	-6.1	-10.1
Printing and reproduction of recorded media	C18	-7.0	1.3	23.8	8.8	7.5	2.5
Manufacture of coke and refined petroleum products	C19
Manufacture of chemicals and chemical products	C20	23.4	-16.2	-17.6	-13.3	1.1	-2.7
Manufacture of basic pharmaceutical products and pharmaceutical preparations	C21	8.6	4.6	-28.3	6.7	19.7	29.3
Manufacture of rubber and plastic products	C22	-7.0	2.8	-4.3	-13.8	-13.9	-9.2
Manufacture of other non-metallic mineral products	C23	-22.5	-22.3	-3.4	-25.9	-5.0	-11.0
Manufacture of basic metals	C24	-3.4	8.4	-7.5	2.4	23.9	19.8
Manufacture of fabricated metal products, except machinery and equipment	C25	17.1	-4.6	7.6	-2.7	11.5	-0.1
Manufacture of computer, electronic and optical products	C26	-31.1	-13.4	-18.8	-15.1	7.9	-19.6
Manufacture of electrical equipment	C27	-11.1	-15.9	-12.4	-18.0	-2.8	-9.4
Manufacture of machinery and equipment n.e.c.	C28	-18.0	-14.7	-4.8	-21.0	-11.9	-14.7
Manufacture of motor vehicles, trailers and semi-trailers	C29	17.6	-6.5	-22.0	5.4	2.4	-11.8
Manufacture of other transport equipment	C30	-34.8	-42.4	-29.7	-51.4	-38.1	-29.6
Manufacture of furniture	C31	-29.6	-21.4	-4.4	0.3	-3.3	3.8
Other manufacturing	C32	1.4	-16.4	-13.6	-14.6	-17.2	-26.7
Repair and installation of machinery and equipment	C33	13.5	8.1	15.4	-14.2	-5.9	-7.0
Electricity, gas, steam and air conditioning supply	D	-10.0	-34.6	4.8	-0.2	-24.1	-9.1
Electricity, gas, steam and air conditioning supply	D35	-10.0	-34.6	4.8	-0.2	-24.1	-9.1

² Calendar-adjusted.

* Preliminary data.

„..“ - Confidential data.

INDUSTRIAL PRODUCTION INDICES IN MARCH 2024

Table 3

Industrial Production Indices (Seasonally adjusted, 2015 = 100)

NACE.BG - 2008	2023										2024		
	III	IV	V	VI	VII	VIII	IX	X	XI	XII	I	II	III*
B_TO_E36	117.0	114.1	115.2	115.3	113.5	115.0	112.6	114.7	109.7	114.1	109.5	109.8	108.7
B	117.9	106.1	102.7	105.8	97.6	102.9	100.4	109.5	103.5	114.4	101.7	91.9	93.0
B05	77.0	65.4	53.9	48.4	57.5	57.9	48.0	58.0	52.6	61.9	46.1	30.9	41.9
B06
B07	140.4	135.9	136.3	143.3	133.0	139.4	142.2	145.6	145.5	149.9	143.9	135.3	132.0
B08	137.7	126.9	141.4	142.0	126.1	125.7	117.2	142.8	123.7	128.3	127.0	152.5	140.7
B09
C	129.3	125.9	126.7	126.1	126.8	128.4	125.5	126.2	122.3	124.3	120.9	123.5	122.0
C10	114.1	119.2	117.6	109.5	114.0	114.1	116.3	119.5	116.0	116.2	120.2	118.0	114.9
C11	111.3	103.9	102.2	101.9	103.6	100.9	101.1	101.6	107.5	102.1	107.2	106.9	99.7
C12	33.1	28.5	28.9	29.5	22.4	35.3	30.1	23.3	26.6	27.5	22.0	26.4	31.5
C13	90.3	83.8	83.0	80.4	78.9	84.9	77.9	74.3	81.2	74.5	71.8	75.4	68.0
C14	83.3	76.3	74.7	78.3	73.0	70.2	76.0	73.1	70.8	71.8	67.7	66.3	64.5
C15	72.7	62.8	64.0	64.1	56.2	57.9	60.0	54.3	60.9	56.3	47.6	50.0	45.7
C16	80.9	74.6	78.8	74.8	73.2	70.7	69.9	74.7	73.1	70.2	80.6	85.3	80.6
C17	100.0	93.9	94.2	97.5	90.1	84.1	95.4	97.3	98.1	92.3	91.3	92.9	91.0
C18	108.9	103.2	105.3	109.4	104.0	102.3	107.3	105.6	107.6	126.3	114.4	111.5	111.8
C19
C20	122.7	122.5	109.8	106.6	111.4	119.7	120.2	134.9	111.2	116.8	117.1	120.7	118.9
C21	117.3	125.9	125.1	127.8	125.6	130.3	131.7	135.5	124.1	110.7	133.3	149.1	146.3
C22	129.8	128.9	131.9	127.0	123.3	122.0	126.0	125.0	126.2	125.4	116.4	115.0	117.8
C23	125.8	109.9	109.8	105.3	108.6	107.0	103.5	103.3	99.3	121.1	105.8	121.0	112.0
C24	103.3	96.1	107.6	107.3	107.1	117.0	124.4	113.8	112.4	110.7	111.6	122.2	122.1
C25	178.7	173.9	173.7	169.8	180.5	189.4	158.2	186.9	170.7	163.9	189.4	181.3	178.8
C26	271.0	270.2	272.4	261.2	246.0	258.3	229.5	216.7	211.1	206.2	235.5	277.7	221.6
C27	169.3	171.3	168.7	177.5	172.3	170.3	159.0	151.1	147.0	155.6	146.6	162.6	153.7
C28	123.1	117.3	123.5	116.7	115.7	109.9	115.9	109.8	107.4	113.5	99.8	107.8	105.1
C29	168.1	163.5	171.0	164.0	161.1	172.4	162.8	177.9	156.6	147.5	168.2	161.4	150.3
C30	327.1	292.1	313.2	291.4	307.3	329.8	286.5	243.4	213.4	233.2	174.7	194.6	228.9
C31	87.8	97.7	88.5	94.4	85.8	82.9	80.4	76.9	80.1	92.5	86.7	86.8	90.3
C32	228.3	213.6	216.6	215.9	220.3	225.9	193.2	206.7	178.5	198.5	193.7	173.7	169.2
C33	119.8	135.0	130.1	130.1	120.1	131.7	127.1	136.2	127.1	136.0	128.4	121.6	112.6
D	69.9	68.7	70.1	75.5	68.7	70.5	70.7	68.4	67.5	76.3	72.2	70.2	66.3
D35	69.9	68.7	70.1	75.5	68.7	70.5	70.7	68.4	67.5	76.3	72.2	70.2	66.3

* Preliminary data.

„..” - Confidential data.

INDUSTRIAL PRODUCTION INDICES IN MARCH 2024

Table 4

(Calendar-adjusted, 2015 = 100)

Industrial Production Indices

NACE.BG - 2008	2021	2022	2023										2024		
	III	III	III	IV	V	VI	VII	VIII	IX	X	XI	XII	I	II	III*
B_TO_E36	112.5	133.6	122.2	109.8	110.5	118.0	117.2	112.5	112.3	119.1	113.5	117.1	104.0	104.0	112.9
B	112.2	134.9	115.6	97.2	96.2	102.0	94.1	100.3	104.5	121.6	111.3	126.5	99.0	87.4	90.4
B05	79.5	144.4	71.1	46.7	35.6	28.4	50.2	53.8	53.3	78.4	67.0	79.1	60.5	33.1	35.9
B06
B07	131.0	129.8	155.1	131.9	135.9	153.7	117.9	135.3	141.5	147.9	146.1	164.4	140.9	126.3	122.3
B08	143.2	145.1	131.2	121.8	146.8	153.5	132.3	130.6	125.6	162.5	137.7	130.1	91.3	122.2	134.7
B09
C	119.4	134.7	134.2	125.5	127.2	132.6	131.9	123.3	126.8	134.6	125.8	121.1	109.3	113.9	126.2
C10	111.8	129.7	115.3	114.9	117.8	110.7	113.5	115.2	120.7	130.7	119.7	120.2	110.2	104.3	115.4
C11	86.6	95.0	105.6	98.6	106.4	122.1	128.1	125.6	109.7	95.2	99.4	94.5	77.7	77.7	93.0
C12	36.2	35.7	32.1	30.2	33.2	39.2	24.5	41.1	34.2	23.7	24.2	24.5	12.8	17.1	31.2
C13	115.3	127.7	97.3	82.4	87.3	85.5	78.3	71.6	76.6	78.4	87.4	69.2	66.2	76.8	72.4
C14	70.4	85.7	85.6	70.0	69.4	83.2	82.1	65.4	75.2	74.5	70.2	69.0	70.6	66.4	65.5
C15	75.1	72.9	80.8	59.9	60.0	69.3	62.5	46.1	59.9	57.4	67.8	51.5	46.0	48.1	48.9
C16	79.0	108.0	81.2	75.0	82.3	79.1	78.5	69.3	72.2	80.0	77.9	65.7	67.9	76.1	81.8
C17	104.1	112.7	104.9	90.8	94.5	101.6	91.7	79.4	93.6	103.6	102.4	86.5	90.6	90.4	94.3
C18	119.1	118.8	111.2	101.5	105.9	111.9	103.7	95.8	103.1	112.9	120.9	133.8	102.8	101.4	114.0
C19
C20	129.3	158.7	134.4	123.7	108.4	108.9	112.7	113.8	118.3	136.4	113.6	116.1	111.3	115.2	130.8
C21	139.5	125.9	123.3	125.1	122.2	137.6	124.9	115.7	127.3	143.0	131.3	117.1	130.2	138.4	159.4
C22	153.5	156.3	137.2	126.1	132.4	132.5	128.1	115.0	128.6	137.8	127.2	112.6	107.9	109.5	124.6
C23	112.4	129.1	124.1	111.9	117.7	112.3	117.4	112.8	110.9	115.1	106.8	108.7	76.2	100.7	110.4
C24	123.3	127.6	109.1	94.6	106.8	105.0	106.8	109.9	119.7	121.1	116.0	108.9	114.6	119.6	130.8
C25	123.4	125.0	180.3	176.7	170.1	180.0	193.1	185.0	159.1	195.0	187.4	171.8	148.2	162.5	180.1
C26	211.8	260.4	280.9	268.8	271.2	275.0	254.3	229.9	229.4	243.0	218.9	194.7	223.3	269.0	225.9
C27	156.5	167.0	176.8	171.9	163.3	192.8	180.4	155.7	163.7	158.8	154.1	140.8	134.6	161.4	160.1
C28	118.4	139.2	129.8	120.1	122.7	124.9	122.2	95.8	116.6	117.2	113.5	108.1	89.3	103.4	110.7
C29	159.9	168.2	178.6	157.7	164.8	169.1	149.2	150.6	167.9	197.3	172.2	134.6	168.3	162.5	157.5
C30	253.8	239.3	355.9	301.9	315.0	323.5	337.7	294.2	281.2	250.8	208.3	197.0	136.5	179.3	250.4
C31	107.4	118.7	89.3	95.5	86.9	101.4	90.1	78.2	81.5	82.3	85.1	92.7	76.4	79.6	92.7
C32	112.3	217.0	232.5	208.1	213.3	247.7	222.7	226.9	203.4	225.1	189.6	179.4	168.5	151.9	170.5
C33	116.0	141.1	121.6	121.5	123.4	133.9	122.1	128.8	133.5	141.7	139.7	179.8	93.8	104.2	113.1
D	87.4	133.7	81.1	57.1	51.5	68.2	70.9	74.0	59.4	59.9	67.6	100.0	87.9	71.0	73.8
D35	87.4	133.7	81.1	57.1	51.5	68.2	70.9	74.0	59.4	59.9	67.6	100.0	87.9	71.0	73.8

* Preliminary data.

„..“ - Confidential data.