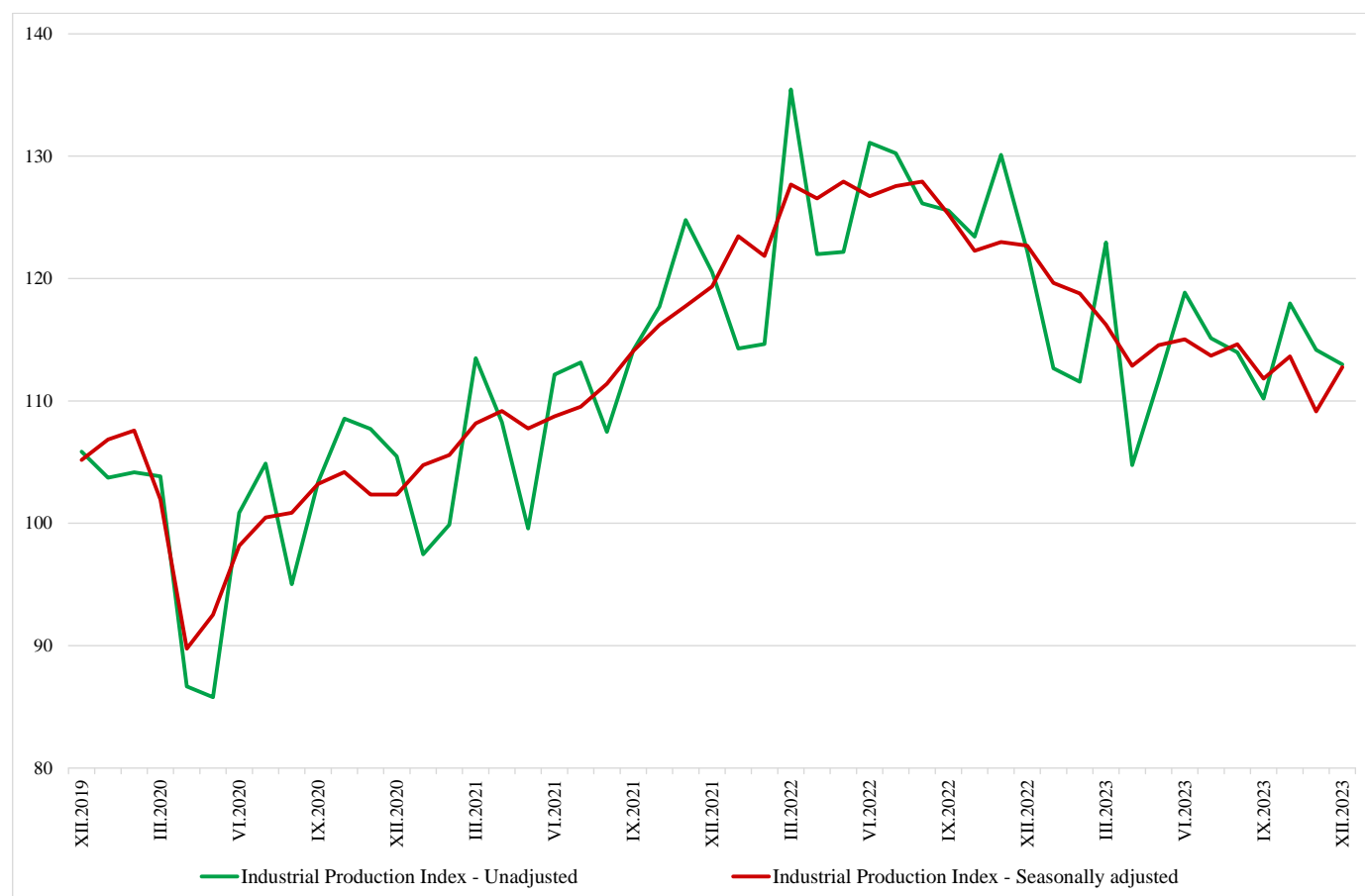


INDUSTRIAL PRODUCTION INDICES IN DECEMBER 2023¹

The Industrial Production Index² increased by 3.3% in December 2023 compared to the previous month. The data are preliminary and seasonally adjusted³.

In comparison with December 2022, a decline of 6.9% was registered in the calendar-adjusted⁴ Industrial Production Index.

Figure 1. Industrial Production Indices (2015 = 100)



¹ December 2023 data is preliminary. The final data on Industrial Production and Turnover Indices for November 2023 can be found on the NSI website: <http://www.nsi.bg/en>.

² The Monthly Industrial Production and Industrial Turnover Indices measure changes in production and turnover values of industrial enterprises. This information can be used to assess the current economic development and for short-term forecasts. Indices do not measure the actual production level; they aim to measure the average change in the value of production between two points in time. Indices are compiled based on information collected through a representative sampling survey on industrial enterprises. The sample covers enterprises with an annual turnover of more than 97% of the total turnover in the industry. Industrial Production Indices are calculated at a constant base year that is to say they are weighted with the structure of the value added at factor costs in the base year.

³ Seasonal adjustment is a statistical method, which eliminates the seasonal component of the time series.

⁴ Calendar-adjustment is an adjustment for variations caused by calendar effects, different number of calendar and working days in the months, national holidays and outliers (for example, the presence of more non-working days in May could contribute to the decline in production in some activities).

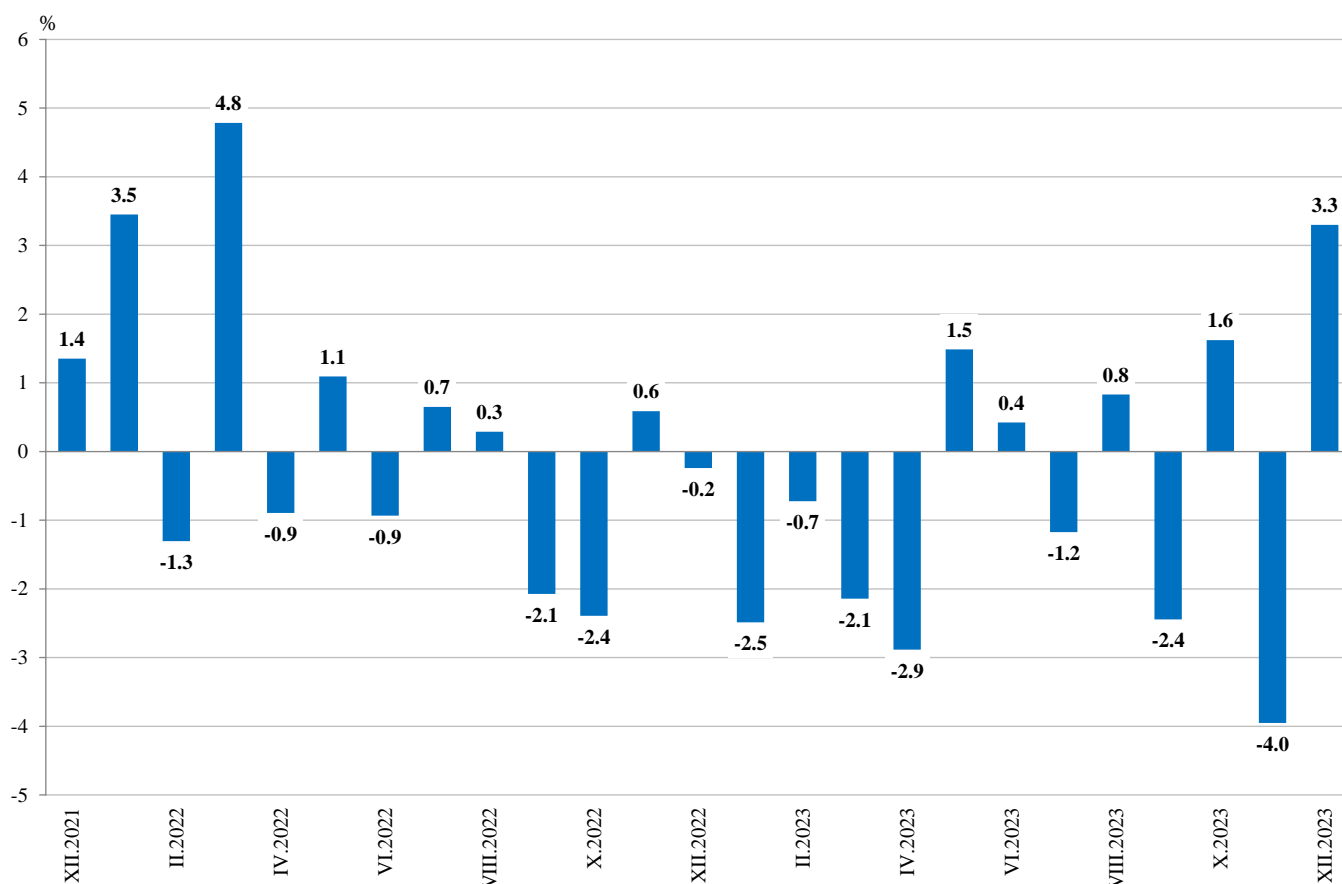
Monthly changes

In December 2023, compared to the previous month, an increase was seen in the electricity, gas, steam and air conditioning supply - by 11.1%, in the mining and quarrying industry - by 9.4%, and in the manufacturing - by 0.9%.

A more significant growth in manufacturing was observed in the manufacture of other non-metallic mineral products - by 17.4%, in the other manufacturing - by 16.0%, and in printing and reproduction of recorded media - by 15.3%.

A decrease was reported in the manufacture of basic pharmaceutical products and pharmaceutical preparations - by 10.0%, in the manufacture of textiles - by 8.8%, in the manufacture of paper and paper products - by 7.2%, and in the manufacture of leather and related products - by 7.1%.

**Figure 2. Changes of Industrial Production Indices compared to the previous month
(Seasonally adjusted)**



Annual changes

On an annual basis, a drop of the Industrial Production Index was observed in the manufacturing - by 8.9%, and in the mining and quarrying industry - by 8.8%, while in the electricity, gas, steam and air conditioning supply there was a growth - by 4.6%.

The most significant production decrease in manufacturing, compared to the same month of the previous year, was registered in the manufacture of textiles - by 29.1%, manufacture of other transport equipment - by 27.3%, in the manufacture of basic pharmaceutical products and pharmaceutical preparations - by 27.2%, in the manufacture of motor vehicles, trailers and semi-trailers - by 21.5%, and in the manufacture of computer, electronic and optical products - by 21.2%.

An increase was seen in the printing and reproduction of recorded media - by 20.7%, and in the repair and installation of machinery and equipment - by 16.0%.

Figure 3. Changes of Industrial Production Indices compared to the same month of the previous year (Calendar-adjusted)

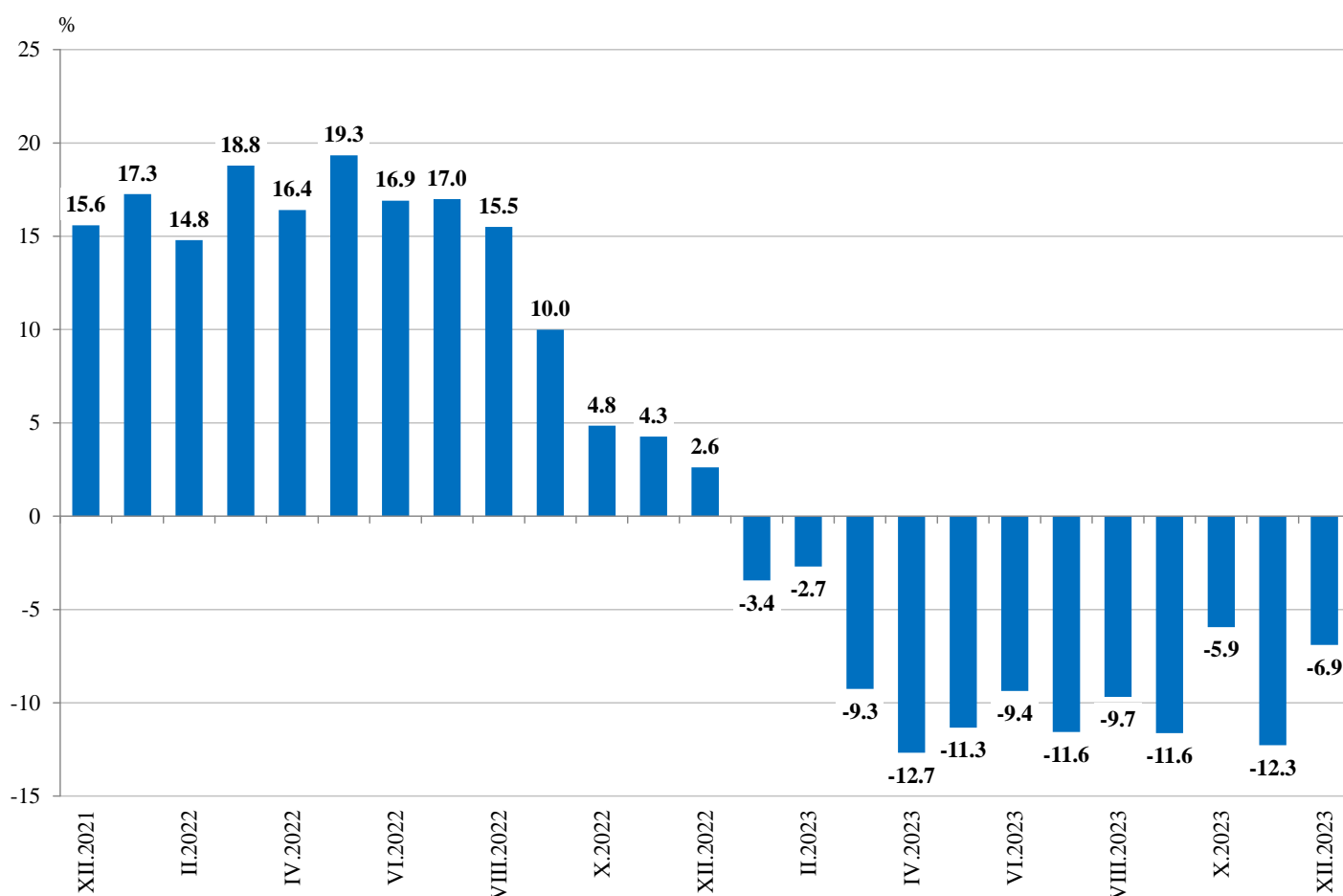




Table1

Annex
Changes of Industrial Production Indices compared to the previous month¹

(Per cent)

Economic activities	NACE.BG - 2008	2023					
		VII	VIII	IX	X	XI	XII*
Industry	B_TO_E36	-1.2	0.8	-2.4	1.6	-4.0	3.3
Mining and quarrying	B	-8.1	5.5	-3.0	9.6	-5.1	9.4
Mining of coal and lignite	B05	19.0	0.5	-16.9	19.8	-8.4	17.7
Extraction of crude petroleum and natural gas	B06
Mining of metal ores	B07	-23.3	14.7	4.7	4.5	-1.7	2.9
Other mining and quarrying	B08	-12.2	-0.4	-6.8	22.4	-13.4	2.4
Mining support service activities	B09
Manufacturing	C	0.9	1.1	-3.0	0.6	-3.0	0.9
Manufacture of food products	C10	3.0	0.5	0.6	4.5	-3.0	-2.0
Manufacture of beverages	C11	0.2	-2.7	0.4	1.2	4.8	-5.1
Manufacture of tobacco products	C12	-16.4	46.3	-16.3	-21.1	15.5	0.7
Manufacture of textiles	C13	-1.4	7.7	-9.2	-2.7	8.9	-8.8
Manufacture of wearing apparel	C14	-7.1	-3.2	7.5	-2.3	-3.7	1.4
Manufacture of leather and related products	C15	-8.7	0.2	2.1	-3.3	4.0	-7.1
Manufacture of wood and of products of wood and cork, except furniture; manufacture of articles of straw and plaiting materials	C16	-2.5	-1.9	-4.0	8.2	-3.0	-4.3
Manufacture of paper and paper products	C17	-9.1	-6.0	13.8	3.6	-0.2	-7.2
Printing and reproduction of recorded media	C18	-5.2	-1.4	2.9	-0.4	2.6	15.3
Manufacture of coke and refined petroleum products	C19
Manufacture of chemicals and chemical products	C20	6.9	8.0	-3.5	12.2	-16.7	1.5
Manufacture of basic pharmaceutical products and pharmaceutical preparations	C21	-2.6	1.6	2.8	3.2	-8.7	-10.0
Manufacture of rubber and plastic products	C22	-2.6	-0.9	2.1	0.9	1.1	-2.1
Manufacture of other non-metallic mineral products	C23	3.1	-2.8	-3.9	-0.5	-2.6	17.4
Manufacture of basic metals	C24	0.5	10.9	6.2	-9.0	-1.6	-2.0
Manufacture of fabricated metal products, except machinery and equipment	C25	7.3	4.5	-16.3	14.6	-6.6	-3.8
Manufacture of computer, electronic and optical products	C26	-5.7	4.7	-13.0	-4.3	-3.9	-4.4
Manufacture of electrical equipment	C27	-2.1	-1.8	-8.6	-4.6	-2.8	2.6
Manufacture of machinery and equipment n.e.c.	C28	-0.8	-4.6	3.7	-4.5	-1.2	6.1
Manufacture of motor vehicles, trailers and semi-trailers	C29	-3.6	9.9	-2.4	8.7	-14.4	-5.5
Manufacture of other transport equipment	C30	8.1	10.4	-16.5	-6.9	-22.0	11.8
Manufacture of furniture	C31	-8.7	-4.7	-5.3	-3.0	5.3	12.1
Other manufacturing	C32	2.2	2.6	-14.1	6.2	-16.2	16.0
Repair and installation of machinery and equipment	C33	-7.8	9.2	-3.0	7.7	-6.5	6.5
Electricity, gas, steam and air conditioning supply	D	-7.3	1.0	-3.1	-3.2	0.9	11.1
Electricity, gas, steam and air conditioning supply	D35	-7.3	1.0	-3.1	-3.2	0.9	11.1

¹ Seasonally adjusted.

* Preliminary data.

„..“ - Confidential data.



Table 2

Changes of Industrial Production Indices compared to the same month of the previous year¹

(Per cent)

Economic activities	NACE.BG - 2008	2023					
		VII	VIII	IX	X	XI	XII*
Industry	B_TO_E36	-11.6	-9.7	-11.6	-5.9	-12.3	-6.9
Mining and quarrying	B	-23.5	-12.1	-17.1	-1.5	-12.1	-8.8
Mining of coal and lignite	B05	-56.2	-45.5	-53.6	-29.6	-45.6	-32.5
Extraction of crude petroleum and natural gas	B06
Mining of metal ores	B07	-1.2	11.7	14.1	24.6	18.9	6.8
Other mining and quarrying	B08	-11.5	-12.2	-22.4	2.0	-13.1	-5.6
Mining support service activities	B09
Manufacturing	C	-3.4	-1.9	-7.7	-6.1	-8.3	-8.9
Manufacture of food products	C10	-6.7	-14.2	-5.6	-0.2	1.9	-9.3
Manufacture of beverages	C11	-1.4	-8.4	-6.6	-9.6	-2.0	-10.5
Manufacture of tobacco products	C12	-50.7	-5.7	-16.5	-48.9	-6.1	-14.3
Manufacture of textiles	C13	-29.0	-25.2	-29.4	-27.0	-21.0	-29.1
Manufacture of wearing apparel	C14	-10.0	-11.3	-7.2	-11.0	-10.9	-9.7
Manufacture of leather and related products	C15	-14.7	-11.3	-14.1	-15.3	-3.8	-19.0
Manufacture of wood and of products of wood and cork, except furniture; manufacture of articles of straw and plaiting materials	C16	-22.1	-16.5	-19.5	-14.2	-20.1	-17.4
Manufacture of paper and paper products	C17	-20.4	-24.6	-6.9	-11.6	-10.0	-13.2
Printing and reproduction of recorded media	C18	-8.9	-8.0	-3.8	-7.0	1.3	20.7
Manufacture of coke and refined petroleum products	C19
Manufacture of chemicals and chemical products	C20	-10.1	5.5	-2.5	17.3	-19.5	-23.4
Manufacture of basic pharmaceutical products and pharmaceutical preparations	C21	-1.5	10.3	5.3	7.9	4.7	-27.2
Manufacture of rubber and plastic products	C22	-12.4	-9.3	-7.7	-5.9	3.9	-5.6
Manufacture of other non-metallic mineral products	C23	-14.7	-20.0	-24.4	-23.1	-22.2	-7.2
Manufacture of basic metals	C24	-8.0	1.0	9.9	-3.8	8.3	-8.3
Manufacture of fabricated metal products, except machinery and equipment	C25	30.8	26.6	1.1	13.9	-4.3	8.6
Manufacture of computer, electronic and optical products	C26	-21.0	-5.2	-34.1	-31.0	-13.6	-21.2
Manufacture of electrical equipment	C27	6.3	5.7	-8.0	-11.7	-16.5	-17.2
Manufacture of machinery and equipment n.e.c.	C28	-12.6	-17.6	-9.7	-17.0	-13.2	-2.9
Manufacture of motor vehicles, trailers and semi-trailers	C29	8.1	9.8	2.5	17.1	-6.4	-21.5
Manufacture of other transport equipment	C30	-2.8	21.4	-7.6	-35.0	-42.7	-27.3
Manufacture of furniture	C31	-20.2	-16.7	-26.8	-29.6	-21.2	-7.7
Other manufacturing	C32	8.1	13.4	-7.6	1.5	-19.1	-12.5
Repair and installation of machinery and equipment	C33	-4.3	-3.9	-3.5	14.1	8.5	16.0
Electricity, gas, steam and air conditioning supply	D	-41.9	-40.6	-32.5	-10.1	-34.5	4.6
Electricity, gas, steam and air conditioning supply	D35	-41.9	-40.6	-32.5	-10.1	-34.5	4.6

¹ Calendar-adjusted.

* Preliminary data.

„..“ - Confidential data.



Table 3

Industrial Production Indices
(Seasonally adjusted, 2015 = 100)

NACE.BG - 2008	2022	2023											
	XII	I	II	III	IV	V	VI	VII	VIII	IX	X	XI	XII*
B_TO_E36	122.7	119.6	118.8	116.2	112.9	114.6	115.0	113.7	114.6	111.8	113.6	109.2	112.8
B	124.6	111.3	115.4	117.2	106.9	101.7	106.0	97.4	102.7	99.7	109.2	103.6	113.4
B05	101.3	92.4	91.8	77.4	65.6	53.9	48.4	57.6	57.9	48.1	57.6	52.7	62.1
B06
B07	153.8	108.1	128.7	155.1	132.3	136.2	153.7	117.9	135.2	141.5	147.9	145.3	149.5
B08	136.3	162.8	135.8	138.3	124.7	145.4	144.4	126.7	126.2	117.6	143.8	124.5	127.5
B09
C	135.9	132.9	128.6	129.4	125.0	125.4	125.8	127.0	128.4	124.5	125.3	121.4	122.5
C10	122.3	121.6	111.3	111.0	115.6	113.2	106.8	110.0	110.6	111.3	116.3	112.8	110.5
C11	112.3	112.3	103.4	111.1	103.4	101.3	101.3	101.5	98.8	99.1	100.3	105.1	99.7
C12	34.2	41.6	41.5	35.0	30.5	30.6	30.2	25.3	37.0	30.9	24.4	28.2	28.4
C13	106.3	97.9	89.9	89.1	83.0	80.5	79.6	78.5	84.5	76.7	74.7	81.3	74.1
C14	80.1	77.3	82.2	82.4	76.2	77.5	78.6	73.0	70.7	76.0	74.3	71.5	72.5
C15	64.5	62.3	60.7	71.7	63.6	64.9	63.2	57.7	57.8	59.1	57.1	59.4	55.2
C16	83.9	79.2	79.6	80.4	73.7	76.7	75.2	73.3	71.9	69.0	74.7	72.5	69.4
C17	103.7	107.6	100.7	99.8	92.6	92.8	97.0	88.2	82.9	94.4	97.8	97.6	90.6
C18	106.4	105.3	104.4	108.3	102.8	102.7	108.9	103.2	101.8	104.8	104.4	107.1	123.5
C19
C20	141.9	122.5	115.0	116.8	116.6	103.5	102.6	109.7	118.4	114.3	128.2	106.8	108.5
C21	145.8	126.8	130.6	119.1	124.2	122.6	128.4	125.0	127.0	130.6	134.8	123.2	110.9
C22	133.6	133.4	131.7	130.0	129.9	130.6	127.7	124.3	123.1	125.7	126.9	128.2	125.6
C23	129.1	142.2	130.8	126.0	111.5	109.3	106.9	110.2	107.2	103.0	102.5	99.8	117.2
C24	115.1	109.7	99.7	101.4	97.9	106.1	106.2	106.7	118.3	125.6	114.3	112.5	110.2
C25	150.3	195.9	163.2	179.1	168.7	180.1	170.1	182.5	190.7	159.5	182.7	170.7	164.1
C26	247.4	272.7	269.9	272.0	273.1	270.7	265.0	249.9	261.6	227.7	217.9	209.3	200.2
C27	179.6	172.2	169.8	167.9	170.5	166.5	179.2	175.4	172.3	157.4	150.2	146.0	149.8
C28	121.5	123.4	124.6	123.9	120.8	123.4	119.2	118.2	112.7	116.9	111.6	110.3	117.0
C29	186.0	158.9	155.4	166.9	157.9	172.1	162.7	156.9	172.4	168.3	182.9	156.5	147.9
C30	332.1	318.6	292.6	327.2	298.1	322.4	302.9	327.6	361.6	301.9	281.2	219.2	245.1
C31	99.9	87.1	89.4	88.3	98.3	87.1	95.0	86.8	82.7	78.3	76.0	80.0	89.7
C32	229.1	211.1	214.6	227.4	214.6	218.5	216.2	221.0	226.7	194.6	206.7	173.3	200.9
C33	118.9	149.0	128.3	119.6	135.0	130.6	130.4	120.3	131.4	127.4	137.3	128.3	136.6
D	79.3	77.5	86.1	70.8	66.3	72.3	77.2	71.5	72.3	70.0	67.8	68.4	76.1
35	79.3	77.5	86.1	70.8	66.3	72.3	77.2	71.5	72.3	70.0	67.8	68.4	76.1

* Preliminary data.

„...“ - Confidential data.



Table 4

Industrial Production Indices
(Calendar-adjusted, 2015 = 100)

NACE.BG - 2008	2020	2021	2022	2023											
	XII	XII	XII	I	II	III	IV	V	VI	VII	VIII	IX	X	XI	XII*
B_TO_E36	104.3	120.5	123.7	112.9	112.3	121.2	107.9	109.4	117.7	117.3	112.4	111.0	118.3	113.1	115.2
B	108.7	133.5	137.0	107.5	110.5	115.1	97.6	95.2	102.3	94.2	100.4	103.8	121.6	111.4	124.9
B05	73.2	129.1	117.2	106.0	94.3	71.1	46.7	35.6	28.4	50.2	53.8	53.3	78.0	67.0	79.1
B06
B07	128.2	135.3	153.8	108.1	128.7	155.1	132.3	136.2	153.7	117.9	135.2	141.5	147.9	146.1	164.3
B08	146.6	148.5	136.4	117.7	106.0	132.8	118.3	148.5	155.5	132.4	131.6	125.1	163.7	138.6	128.7
B09
C	107.0	118.3	130.2	120.5	118.3	132.8	124.1	125.3	132.2	131.7	123.1	124.8	133.5	125.3	118.6
C10	108.1	120.0	126.5	109.1	97.2	111.2	110.7	113.1	108.7	110.2	112.5	115.9	127.8	117.9	114.7
C11	75.2	93.4	103.8	79.5	72.5	104.1	97.5	105.1	121.4	125.5	123.3	108.3	94.3	97.6	92.9
C12	40.7	26.9	28.5	26.0	29.0	32.1	31.8	33.2	39.2	24.5	41.1	34.5	24.1	24.7	24.5
C13	90.2	115.6	95.9	90.1	89.7	95.8	82.1	84.3	85.0	77.8	71.2	75.6	78.1	87.0	68.0
C14	63.6	74.5	76.5	81.0	82.9	83.4	69.6	72.2	83.3	82.4	65.6	74.5	75.7	70.5	69.1
C15	60.4	69.9	59.6	64.7	59.4	78.5	59.6	60.3	67.4	63.5	46.5	57.2	60.7	65.2	48.3
C16	74.6	84.2	78.9	65.9	69.4	80.6	73.9	80.3	79.1	78.7	70.5	70.8	80.0	77.6	65.2
C17	87.9	105.1	97.3	104.8	95.8	104.3	89.9	92.8	101.5	90.8	79.4	92.2	103.4	102.1	84.4
C18	104.2	122.2	108.1	93.6	95.5	110.1	101.5	102.9	111.9	103.8	96.2	101.3	112.9	120.9	130.5
C19
C20	109.5	140.5	141.0	115.0	109.2	127.9	117.8	102.3	105.1	111.2	113.0	111.6	129.6	109.1	107.9
C21	128.0	130.1	163.3	120.6	115.7	122.3	123.7	119.1	137.8	124.5	115.1	124.5	142.1	131.5	118.9
C22	131.3	128.6	117.7	124.7	127.3	137.1	127.1	130.1	133.5	129.8	116.4	127.4	139.4	128.7	111.0
C23	95.8	103.1	112.5	102.8	107.4	123.6	112.3	115.9	112.5	118.5	112.7	109.8	114.1	106.8	104.5
C24	114.2	107.2	117.7	114.5	96.5	109.3	94.5	106.8	105.0	106.7	110.4	119.9	120.5	115.9	107.9
C25	128.0	128.0	159.7	151.2	145.9	180.7	169.9	176.9	180.0	194.5	186.5	160.6	189.6	187.8	173.5
C26	178.7	207.7	239.8	258.0	248.9	278.6	268.1	263.6	275.2	253.7	230.1	225.0	243.5	218.4	188.8
C27	125.7	133.6	160.7	162.9	166.4	174.8	171.0	158.2	191.2	180.3	155.5	159.9	157.8	152.9	133.1
C28	104.7	116.3	113.6	112.8	119.7	130.2	123.7	121.4	126.9	124.6	97.7	116.6	118.7	115.5	110.2
C29	153.5	138.6	172.6	159.2	158.7	181.8	153.2	168.1	171.1	145.7	152.4	166.4	196.5	172.5	135.5
C30	132.0	217.6	280.0	279.2	290.6	356.6	301.0	314.0	324.1	338.1	292.8	281.6	249.9	207.1	203.6
C31	101.8	100.5	97.0	76.2	82.4	88.6	95.5	84.4	101.3	91.3	78.2	80.0	82.3	85.4	89.6
C32	86.3	182.8	207.7	183.6	189.9	232.0	208.7	213.6	247.0	221.8	226.0	203.4	225.3	183.5	181.8
C33	119.0	156.3	155.8	109.4	110.7	121.6	121.5	123.9	134.0	122.1	128.5	133.5	142.4	140.2	180.8
D	91.5	125.2	95.5	88.5	93.3	81.2	53.0	52.4	68.3	72.2	73.9	59.4	59.8	67.6	99.8
D35	91.5	125.2	95.5	88.5	93.3	81.2	53.0	52.4	68.3	72.2	73.9	59.4	59.8	67.6	99.8

* Preliminary data.

„...“ - Confidential data.