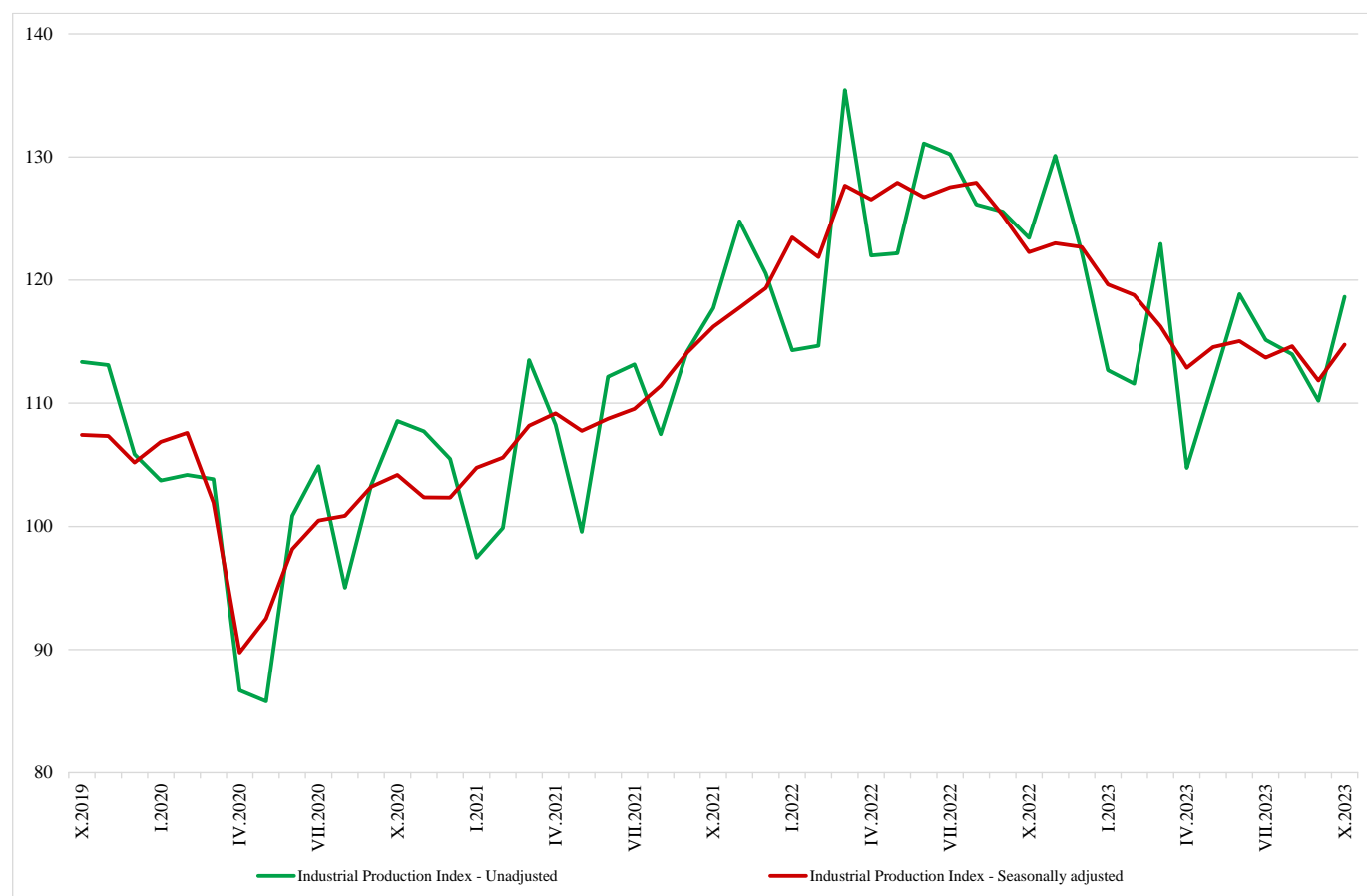


INDUSTRIAL PRODUCTION INDICES IN OCTOBER 2023¹

The Industrial Production Index² increased by 2.6% in October 2023 compared to the previous month. The data are preliminary and seasonally adjusted³.

In comparison with October 2022, a decline of 5.4% was registered in the calendar-adjusted⁴ Industrial Production Index.

Figure 1. Industrial Production Indices (2015 = 100)



¹ October 2023 data is preliminary. The final data on Industrial Production and Turnover Indices for September 2023 can be found on the NSI website: <http://www.nsi.bg/en>.

² The Monthly Industrial Production and Industrial Turnover Indices measure changes in production and turnover values of industrial enterprises. This information can be used to assess the current economic development and for short-term forecasts. Indices do not measure the actual production level; they aim to measure the average change in the value of production between two points in time. Indices are compiled based on information collected through a representative sampling survey on industrial enterprises. The sample covers enterprises with an annual turnover of more than 97% of the total turnover in the industry. Industrial Production Indices are calculated at a constant base year that is to say they are weighted with the structure of the value added at factor costs in the base year.

³ Seasonal adjustment is a statistical method, which eliminates the seasonal component of the time series.

⁴ Calendar-adjustment is an adjustment for variations caused by calendar effects, different number of calendar and working days in the months, national holidays and outliers (for example, the presence of more non-working days in May could contribute to the decline in production in some activities).

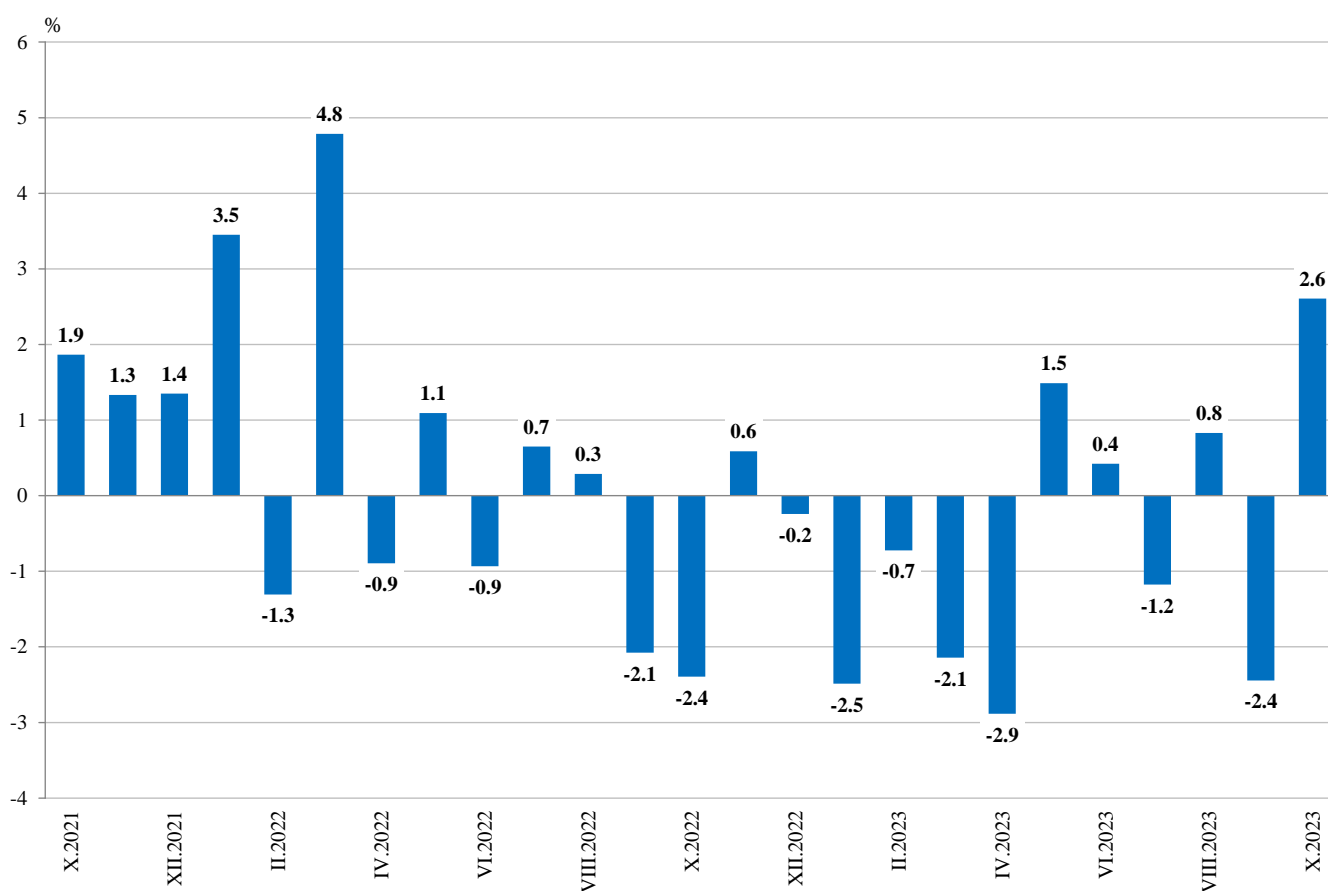
Monthly changes

In October 2023, compared to the previous month, an increase was seen in the mining and quarrying industry - by 9.7%, in the manufacturing - by 1.6%, while in the electricity, gas, steam and air conditioning supply there was a decrease - by 3.2%.

A more significant growth in manufacturing was observed in the manufacture of chemicals and chemical products - by 22.6%, in the manufacture of fabricated metal products, except machinery and equipment - by 15.6%, in the manufacture of motor vehicles, trailers and semi-trailers - by 9.5%, in the manufacture of wood and of products of wood and cork, except furniture; manufacture of articles of straw and plaiting materials - by 8.2%, in the other manufacturing and repair, and installation of machinery and equipment - both by 7.7%.

A decrease was reported in the manufacture of tobacco products - by 23.1%, and in the manufacture of other transport equipment - by 14.3%.

Figure 2. Changes of Industrial Production Indices compared to the previous month (Seasonally adjusted)



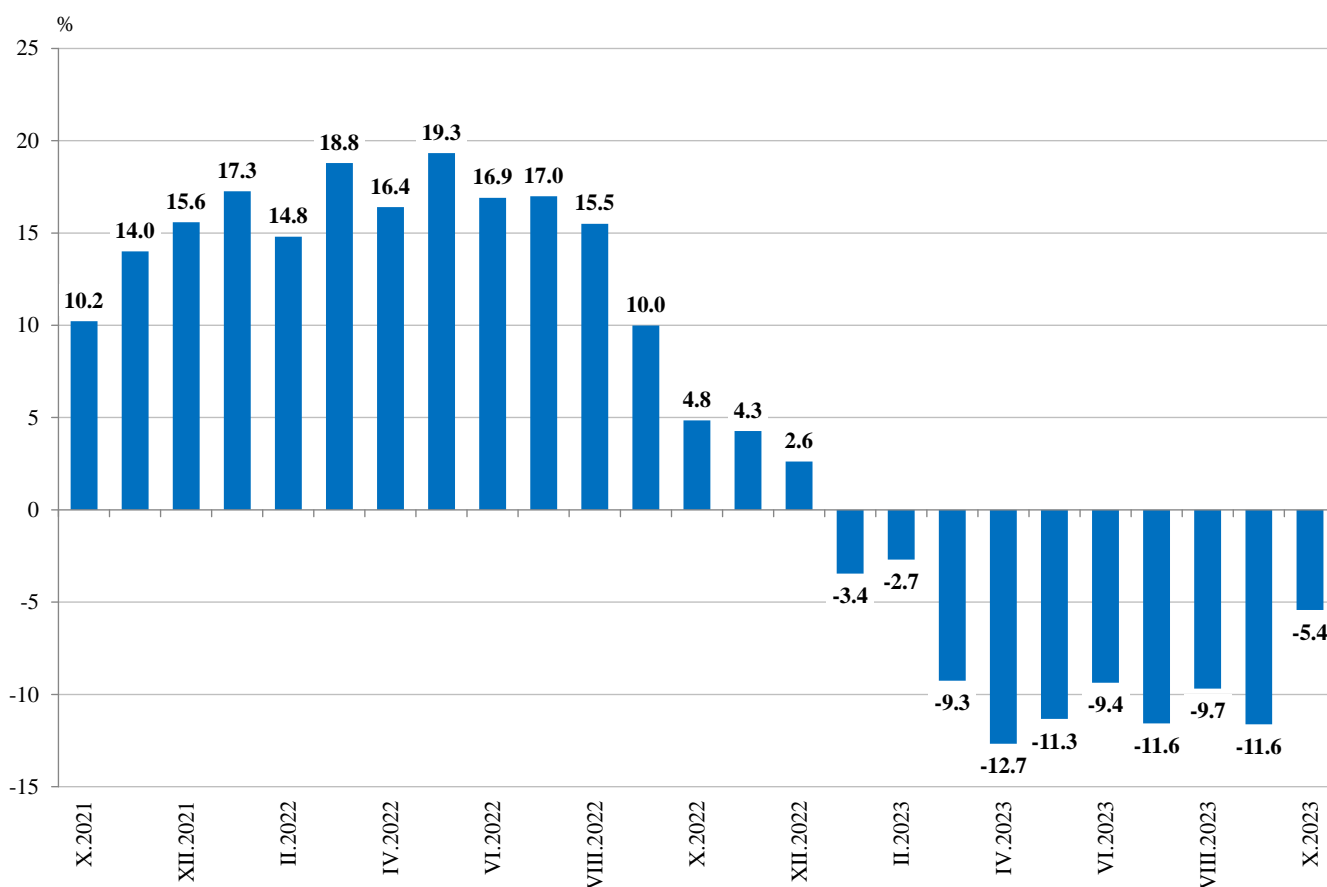
Annual changes

On an annual basis, a drop of the Industrial Production Index was observed in the electricity, gas, steam and air conditioning supply - by 10.1%, in the manufacturing - by 5.5%, and in the mining and quarrying industry - by 1.5%.

A most significant production decrease in manufacturing, compared to the same month of the previous year, was registered in the manufacture of tobacco products - by 51.9%, in the manufacture of other transport equipment - by 35.0%, in the manufacture of computer, electronic and optical products - by 31.0%, in the manufacture of furniture - by 29.7%, and in the manufacture of textiles - by 29.6%.

An increase was seen in the manufacture of chemicals and chemical products - by 29.5%, in the manufacture of motor vehicles, trailers and semi-trailers - by 17.1%, and in the manufacture of fabricated metal products, except machinery and equipment - by 14.9%.

Figure 3. Changes of Industrial Production Indices compared to the same month of the previous year (Calendar-adjusted)





Annex

Table 1

Changes of Industrial Production Indices compared to the previous month¹

(Per cent)

Economic activities	NACE.BG - 2008	2023					
		V	VI	VII	VIII	IX	X*
Industry	B_TO_E36	1.5	0.4	-1.2	0.8	-2.4	2.6
Mining and quarrying	B	-4.9	4.1	-8.1	5.5	-3.0	9.7
Mining of coal and lignite	B05	-17.8	-10.2	19.0	0.5	-16.9	19.9
Extraction of crude petroleum and natural gas	B06
Mining of metal ores	B07	2.9	12.9	-23.3	14.7	4.7	4.4
Other mining and quarrying	B08	16.5	-0.7	-12.2	-0.4	-6.8	23.2
Mining support service activities	B09
Manufacturing	C	0.4	0.3	0.9	1.1	-3.0	1.6
Manufacture of food products	C10	-2.1	-5.6	3.0	0.5	0.6	4.4
Manufacture of beverages	C11	-2.1	0.0	0.2	-2.7	0.4	0.8
Manufacture of tobacco products	C12	0.4	-1.2	-16.4	46.3	-16.3	-23.1
Manufacture of textiles	C13	-3.1	-1.1	-1.4	7.7	-9.2	-6.5
Manufacture of wearing apparel	C14	1.7	1.4	-7.1	-3.2	7.5	-2.0
Manufacture of leather and related products	C15	2.0	-2.5	-8.7	0.2	2.1	-3.4
Manufacture of wood and of products of wood and cork, except furniture; manufacture of articles of straw and plaiting materials	C16	4.0	-2.0	-2.5	-1.9	-4.0	8.2
Manufacture of paper and paper products	C17	0.2	4.5	-9.1	-6.0	13.8	3.4
Printing and reproduction of recorded media	C18	-0.1	6.0	-5.2	-1.4	2.9	-0.6
Manufacture of coke and refined petroleum products	C19
Manufacture of chemicals and chemical products	C20	-11.3	-0.9	6.9	8.0	-3.5	22.6
Manufacture of basic pharmaceutical products and pharmaceutical preparations	C21	-1.3	4.7	-2.6	1.6	2.8	3.6
Manufacture of rubber and plastic products	C22	0.5	-2.3	-2.6	-0.9	2.1	0.7
Manufacture of other non-metallic mineral products	C23	-2.0	-2.1	3.1	-2.8	-3.9	-0.1
Manufacture of basic metals	C24	8.3	0.0	0.5	10.9	6.2	-8.6
Manufacture of fabricated metal products, except machinery and equipment	C25	6.7	-5.5	7.3	4.5	-16.3	15.6
Manufacture of computer, electronic and optical products	C26	-0.8	-2.1	-5.7	4.7	-13.0	-3.7
Manufacture of electrical equipment	C27	-2.4	7.7	-2.1	-1.8	-8.6	-3.3
Manufacture of machinery and equipment n.e.c.	C28	2.1	-3.4	-0.8	-4.6	3.7	-4.4
Manufacture of motor vehicles, trailers and semi-trailers	C29	8.9	-5.4	-3.6	9.9	-2.4	9.5
Manufacture of other transport equipment	C30	8.1	-6.0	8.1	10.4	-16.5	-14.3
Manufacture of furniture	C31	-11.4	9.1	-8.7	-4.7	-5.3	-3.2
Other manufacturing	C32	1.8	-1.1	2.2	2.6	-14.1	7.7
Repair and installation of machinery and equipment	C33	-3.3	-0.1	-7.8	9.2	-3.0	7.7
Electricity, gas, steam and air conditioning supply	D	9.1	6.7	-7.3	1.0	-3.1	-3.2
Electricity, gas, steam and air conditioning supply	D35	9.1	6.7	-7.3	1.0	-3.1	-3.2

¹ Seasonally adjusted.

* Preliminary data.

„..“ - Confidential data.



Table 2

Changes of Industrial Production Indices compared to the same month of the previous year¹

(Per cent)

Economic activities	NACE.BG - 2008	2023					
		V	VI	VII	VIII	IX	X*
Industry	B_TO_E36	-11.3	-9.4	-11.6	-9.7	-11.6	-5.4
Mining and quarrying	B	-24.2	-10.8	-23.5	-12.1	-17.1	-1.5
Mining of coal and lignite	B05	-68.7	-70.1	-56.2	-45.5	-53.6	-29.6
Extraction of crude petroleum and natural gas	B06
Mining of metal ores	B07	4.0	24.2	-1.2	11.7	14.1	24.5
Other mining and quarrying	B08	4.2	2.8	-11.5	-12.2	-22.4	2.3
Mining support service activities	B09
Manufacturing	C	-8.6	-6.4	-3.4	-1.9	-7.7	-5.5
Manufacture of food products	C10	-12.3	-13.2	-6.7	-14.2	-5.6	-0.3
Manufacture of beverages	C11	-5.4	-7.4	-1.4	-8.4	-6.6	-9.4
Manufacture of tobacco products	C12	-34.1	-36.6	-50.7	-5.7	-16.5	-51.9
Manufacture of textiles	C13	-29.2	-29.0	-29.0	-25.2	-29.4	-29.6
Manufacture of wearing apparel	C14	-10.8	-3.7	-10.0	-11.3	-7.2	-11.1
Manufacture of leather and related products	C15	-4.3	-6.6	-14.7	-11.3	-14.1	-15.1
Manufacture of wood and of products of wood and cork, except furniture; manufacture of articles of straw and plaiting materials	C16	-28.3	-16.6	-22.1	-16.5	-19.5	-14.2
Manufacture of paper and paper products	C17	-17.5	-9.6	-20.4	-24.6	-6.9	-11.2
Printing and reproduction of recorded media	C18	-15.0	0.1	-8.9	-8.0	-3.8	-7.1
Manufacture of coke and refined petroleum products	C19
Manufacture of chemicals and chemical products	C20	-24.3	-17.5	-10.1	5.5	-2.5	29.5
Manufacture of basic pharmaceutical products and pharmaceutical preparations	C21	-3.1	-7.0	-1.5	10.3	5.3	7.9
Manufacture of rubber and plastic products	C22	-10.9	-10.5	-12.4	-9.3	-7.7	-5.9
Manufacture of other non-metallic mineral products	C23	-20.4	-19.6	-14.7	-20.0	-24.4	-23.0
Manufacture of basic metals	C24	-14.7	-11.8	-8.0	1.0	9.9	-3.7
Manufacture of fabricated metal products, except machinery and equipment	C25	16.0	12.3	30.8	26.6	1.1	14.9
Manufacture of computer, electronic and optical products	C26	-9.0	-7.7	-21.0	-5.2	-34.1	-31.0
Manufacture of electrical equipment	C27	-2.3	9.0	6.3	5.7	-8.0	-11.2
Manufacture of machinery and equipment n.e.c.	C28	-9.3	-9.6	-12.6	-17.6	-9.7	-17.1
Manufacture of motor vehicles, trailers and semi-trailers	C29	22.8	1.3	8.1	9.8	2.5	17.1
Manufacture of other transport equipment	C30	21.0	-0.5	-2.8	21.4	-7.6	-35.0
Manufacture of furniture	C31	-25.5	-12.7	-20.2	-16.7	-26.8	-29.7
Other manufacturing	C32	-2.0	-13.5	8.1	13.4	-7.6	1.5
Repair and installation of machinery and equipment	C33	-13.6	8.4	-4.3	-3.9	-3.5	14.0
Electricity, gas, steam and air conditioning supply	D	-26.7	-26.7	-41.9	-40.6	-32.5	-10.1
Electricity, gas, steam and air conditioning supply	D35	-26.7	-26.7	-41.9	-40.6	-32.5	-10.1

¹ Calendar-adjusted.

* Preliminary data.

„..“ - Confidential data.



Table 3

Industrial Production Indices
(Seasonally adjusted, 2015 = 100)

NACE.BG - 2008	2022			2023									
	X	XI	XII	I	II	III	IV	V	VI	VII	VIII	IX	X*
B_TO_E36	122.3	123.0	122.7	119.6	118.8	116.2	112.9	114.6	115.0	113.7	114.6	111.8	114.7
B	111.9	117.9	124.6	111.3	115.4	117.2	106.9	101.7	106.0	97.4	102.7	99.7	109.3
B05	90.9	109.2	101.3	92.4	91.8	77.4	65.6	53.9	48.4	57.6	57.9	48.1	57.6
B06
B07	118.7	122.9	153.8	108.1	128.7	155.1	132.3	136.2	153.7	117.9	135.2	141.5	147.8
B08	145.3	142.1	136.3	162.8	135.8	138.3	124.7	145.4	144.4	126.7	126.2	117.6	144.8
B09
C	135.0	132.2	135.9	132.9	128.6	129.4	125.0	125.4	125.8	127.0	128.4	124.5	126.5
C10	117.7	111.4	122.3	121.6	111.3	111.0	115.6	113.2	106.8	110.0	110.6	111.3	116.1
C11	110.9	110.6	112.3	112.3	103.4	111.1	103.4	101.3	101.3	101.5	98.8	99.1	99.9
C12	43.1	29.6	34.2	41.6	41.5	35.0	30.5	30.6	30.2	25.3	37.0	30.9	23.8
C13	101.1	106.4	106.3	97.9	89.9	89.1	83.0	80.5	79.6	78.5	84.5	76.7	71.7
C14	83.7	79.3	80.1	77.3	82.2	82.4	76.2	77.5	78.6	73.0	70.7	76.0	74.5
C15	66.7	64.5	64.5	62.3	60.7	71.7	63.6	64.9	63.2	57.7	57.8	59.1	57.1
C16	87.7	91.2	83.9	79.2	79.6	80.4	73.7	76.7	75.2	73.3	71.9	69.0	74.7
C17	112.6	111.6	103.7	107.6	100.7	99.8	92.6	92.8	97.0	88.2	82.9	94.4	97.6
C18	112.3	105.5	106.4	105.3	104.4	108.3	102.8	102.7	108.9	103.2	101.8	104.8	104.1
C19
C20	110.2	132.1	141.9	122.5	115.0	116.8	116.6	103.5	102.6	109.7	118.4	114.3	140.1
C21	129.1	117.8	145.8	126.8	130.6	119.1	124.2	122.6	128.4	125.0	127.0	130.6	135.3
C22	135.2	124.5	133.6	133.4	131.7	130.0	129.9	130.6	127.7	124.3	123.1	125.7	126.6
C23	133.0	127.2	129.1	142.2	130.8	126.0	111.5	109.3	106.9	110.2	107.2	103.0	102.9
C24	118.6	111.3	115.1	109.7	99.7	101.4	97.9	106.1	106.2	106.7	118.3	125.6	114.9
C25	161.3	178.2	150.3	195.9	163.2	179.1	168.7	180.1	170.1	182.5	190.7	159.5	184.4
C26	308.5	237.3	247.4	272.7	269.9	272.0	273.1	270.7	265.0	249.9	261.6	227.7	219.2
C27	166.6	170.5	179.6	172.2	169.8	167.9	170.5	166.5	179.2	175.4	172.3	157.4	152.2
C28	133.6	125.4	121.5	123.4	124.6	123.9	120.8	123.4	119.2	118.2	112.7	116.9	111.8
C29	160.1	167.9	186.0	158.9	155.4	166.9	157.9	172.1	162.7	156.9	172.4	168.3	184.2
C30	363.1	338.5	332.1	318.6	292.6	327.2	298.1	322.4	302.9	327.6	361.6	301.9	258.7
C31	105.9	100.4	99.9	87.1	89.4	88.3	98.3	87.1	95.0	86.8	82.7	78.3	75.8
C32	206.8	210.2	229.1	211.1	214.6	227.4	214.6	218.5	216.2	221.0	226.7	194.6	209.7
C33	121.3	118.2	118.9	149.0	128.3	119.6	135.0	130.6	130.4	120.3	131.4	127.4	137.3
D	67.5	91.9	79.3	77.5	86.1	70.8	66.3	72.3	77.2	71.5	72.3	70.0	67.8
35	67.5	91.9	79.3	77.5	86.1	70.8	66.3	72.3	77.2	71.5	72.3	70.0	67.8

* Preliminary data.

...“ - Confidential data.



Table 4

Industrial Production Indices
(Calendar-adjusted, 2015 = 100)

NACE.BG - 2008	2020	2021	2022			2023									
	X	X	X	XI	XII	I	II	III	IV	V	VI	VII	VIII	IX	X*
B_TO_E36	108.8	120.0	125.7	128.9	123.7	112.9	112.3	121.2	107.9	109.4	117.7	117.3	112.4	111.0	118.9
B	107.4	127.8	123.5	126.8	137.0	107.5	110.5	115.1	97.6	95.2	102.3	94.2	100.4	103.8	121.7
B05	74.8	136.0	110.8	123.2	117.2	106.0	94.3	71.1	46.7	35.6	28.4	50.2	53.8	53.3	78.0
B06
B07	130.4	108.9	118.7	122.9	153.8	108.1	128.7	155.1	132.3	136.2	153.7	117.9	135.2	141.5	147.8
B08	120.7	153.5	160.5	159.6	136.4	117.7	106.0	132.8	118.3	148.5	155.5	132.4	131.6	125.1	164.1
B09
C	116.9	125.9	142.1	136.6	130.2	120.5	118.3	132.8	124.1	125.3	132.2	131.7	123.1	124.8	134.4
C10	93.5	90.1	128.1	115.7	126.5	109.1	97.2	111.2	110.7	113.1	108.7	110.2	112.5	115.9	127.7
C11	36.4	35.2	104.4	99.6	103.8	79.5	72.5	104.1	97.5	105.1	121.4	125.5	123.3	108.3	94.6
C12	111.3	135.9	47.1	26.3	28.5	26.0	29.0	32.1	31.8	33.2	39.2	24.5	41.1	34.5	22.7
C13	72.5	74.4	107.0	110.1	95.9	90.1	89.7	95.8	82.1	84.3	85.0	77.8	71.2	75.6	75.3
C14	81.6	75.2	85.0	79.2	76.5	81.0	82.9	83.4	69.6	72.2	83.3	82.4	65.6	74.5	75.6
C15	81.0	84.8	71.7	67.7	59.6	64.7	59.4	78.5	59.6	60.3	67.4	63.5	46.5	57.2	60.8
C16	94.8	110.1	93.2	97.1	78.9	65.9	69.4	80.6	73.9	80.3	79.1	78.7	70.5	70.8	79.9
C17	112.8	130.7	116.9	113.4	97.3	104.8	95.8	104.3	89.9	92.8	101.5	90.8	79.4	92.2	103.7
C18	94.0	56.8	121.4	119.4	108.1	93.6	95.5	110.1	101.5	102.9	111.9	103.8	96.2	101.3	112.8
C19
C20	120.4	125.8	110.5	135.5	141.0	115.0	109.2	127.9	117.8	102.3	105.1	111.2	113.0	111.6	143.1
C21	163.2	155.4	131.7	125.6	163.3	120.6	115.7	122.3	123.7	119.1	137.8	124.5	115.1	124.5	142.1
C22	122.8	136.2	148.2	123.8	117.7	124.7	127.3	137.1	127.1	130.1	133.5	129.8	116.4	127.4	139.4
C23	107.7	108.8	148.4	137.4	112.5	102.8	107.4	123.6	112.3	115.9	112.5	118.5	112.7	109.8	114.2
C24	135.5	119.9	125.3	107.0	117.7	114.5	96.5	109.3	94.5	106.8	105.0	106.7	110.4	119.9	120.6
C25	182.1	311.2	166.5	196.4	159.7	151.2	145.9	180.7	169.9	176.9	180.0	194.5	186.5	160.6	191.3
C26	154.0	157.4	352.8	252.8	239.8	258.0	248.9	278.6	268.1	263.6	275.2	253.7	230.1	225.0	243.4
C27	111.9	128.5	178.7	183.2	160.7	162.9	166.4	174.8	171.0	158.2	191.2	180.3	155.5	159.9	158.6
C28	191.1	109.1	142.9	133.0	113.6	112.8	119.7	130.2	123.7	121.4	126.9	124.6	97.7	116.6	118.4
C29	197.8	225.6	167.8	184.3	172.6	159.2	158.7	181.8	153.2	168.1	171.1	145.7	152.4	166.4	196.5
C30	118.0	119.8	384.5	361.3	280.0	279.2	290.6	356.6	301.0	314.0	324.1	338.1	292.8	281.6	249.9
C31	121.4	142.5	116.9	108.4	97.0	76.2	82.4	88.6	95.5	84.4	101.3	91.3	78.2	80.0	82.1
C32	104.9	120.4	222.0	226.9	207.7	183.6	189.9	232.0	208.7	213.6	247.0	221.8	226.0	203.4	225.3
C33	65.3	99.4	124.8	129.2	155.8	109.4	110.7	121.6	121.5	123.9	134.0	122.1	128.5	133.5	142.3
D	65.3	99.4	66.6	103.3	95.5	88.5	93.3	81.2	53.0	52.4	68.3	72.2	73.9	59.4	59.8
D35	106.3	103.0	66.6	103.3	95.5	88.5	93.3	81.2	53.0	52.4	68.3	72.2	73.9	59.4	59.8

* Preliminary data.

„..“ - Confidential data.