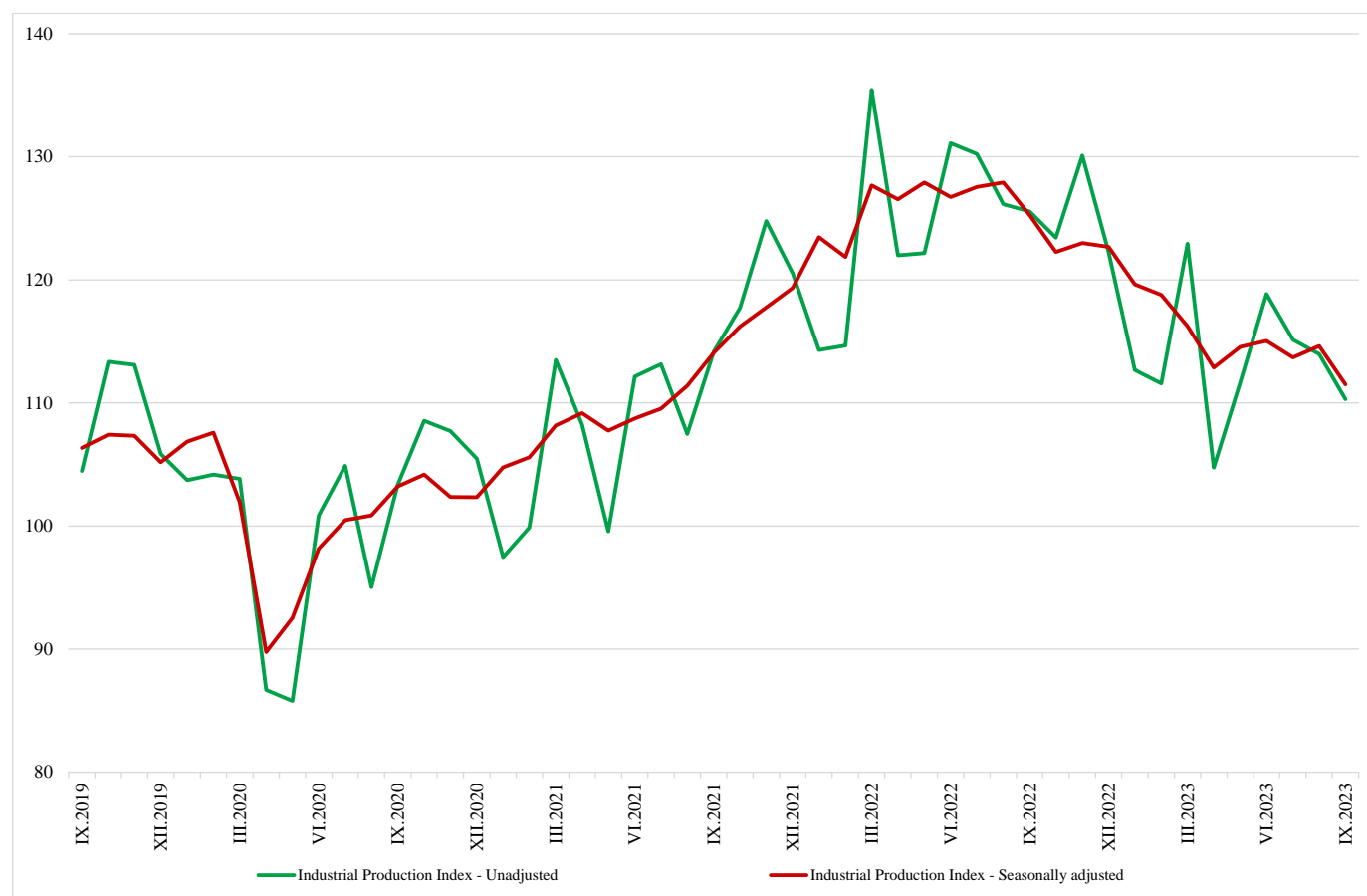


INDUSTRIAL PRODUCTION INDICES IN SEPTEMBER 2023¹

The Industrial Production Index² went down by 2.7% in September 2023 compared to the previous month. The data are preliminary and seasonally adjusted³.

In comparison with September 2022, a drop of 11.5% was registered in the calendar-adjusted⁴ Industrial Production Index.

Figure 1. Industrial Production Indices (2015 = 100)



¹ September 2023 data is preliminary. The final data on Industrial Production and Turnover Indices for August 2023 can be found on the NSI website: <http://www.nsi.bg/en>.

² The Monthly Industrial Production and Industrial Turnover Indices measure changes in production and turnover values of industrial enterprises. This information can be used to assess the current economic development and for short-term forecasts. Indices do not measure the actual production level; they aim to measure the average change in the value of production between two points in time. Indices are compiled based on information collected through a representative sampling survey on industrial enterprises. The sample covers enterprises with an annual turnover of more than 97% of the total turnover in the industry. Industrial Production Indices are calculated at a constant base year that is to say they are weighted with the structure of the value added at factor costs in the base year.

³ Seasonal adjustment is a statistical method, which eliminates the seasonal component of the time series.

⁴ Calendar-adjustment is an adjustment for variations caused by calendar effects, different number of calendar and working days in the months, national holidays and outliers (for example, the presence of more non-working days in May could contribute to the decline in production in some activities).

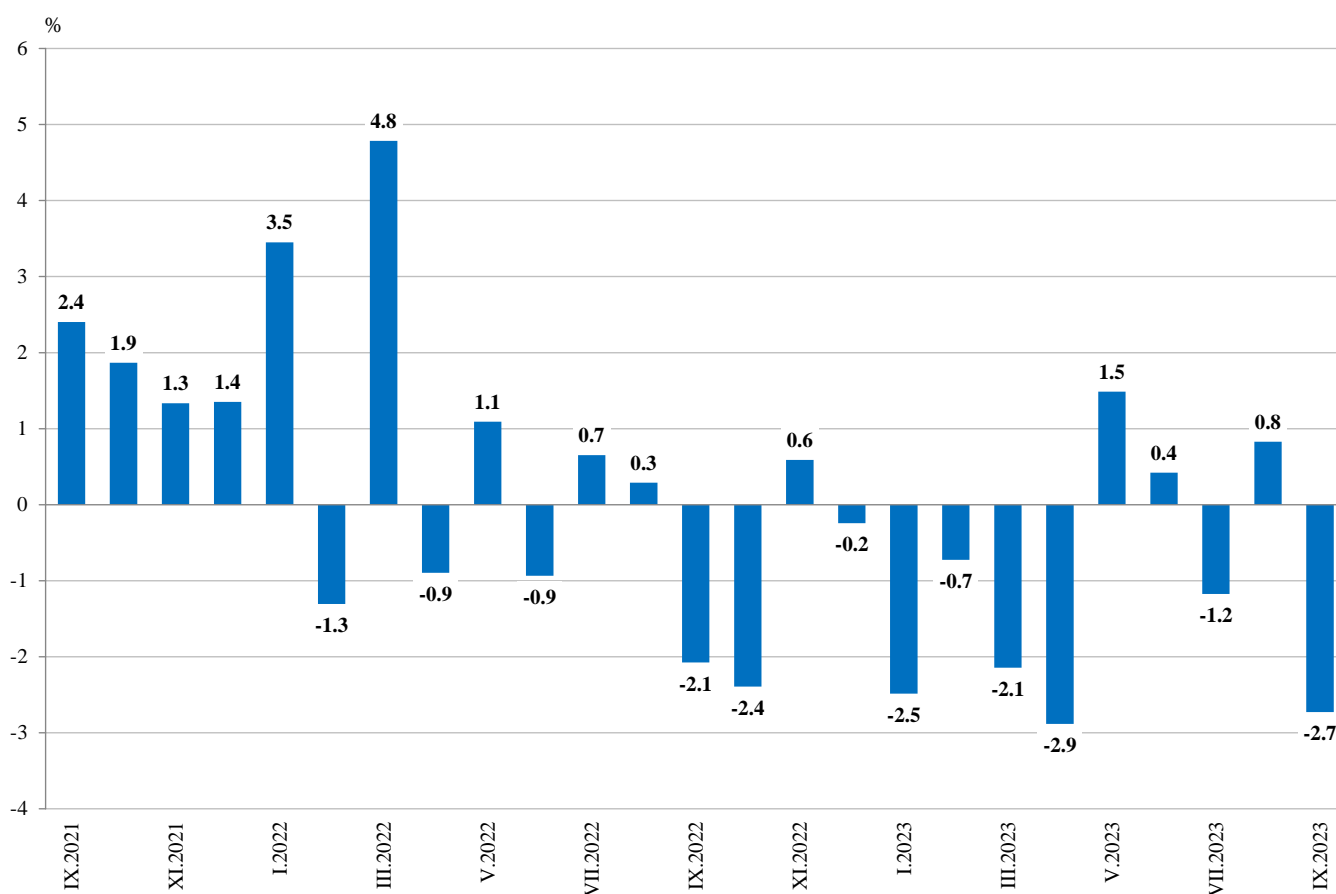
Monthly changes

In September 2023, compared to the previous month, a drop was seen in the mining and quarrying industry - by 3.2%, in the manufacturing - by 3.1%, and in the electricity, gas, steam and air conditioning supply - by 0.5%.

A more significant decrease in manufacturing was observed in the manufacture of fabricated metal products, except machinery and equipment - by 15.8%, in the other manufacturing - by 14.0%, in the manufacture of other transport equipment - by 13.4%, in the manufacture of computer, electronic and optical products - by 12.2%, in the manufacture of tobacco products - by 11.9%.

An increase was reported in the manufacture of paper and paper products - by 12.7%, in the manufacture of wearing apparel - by 7.0%, and in the manufacture of basic metals - by 6.3%.

**Figure 2. Changes of Industrial Production Indices compared to the previous month
(Seasonally adjusted)**



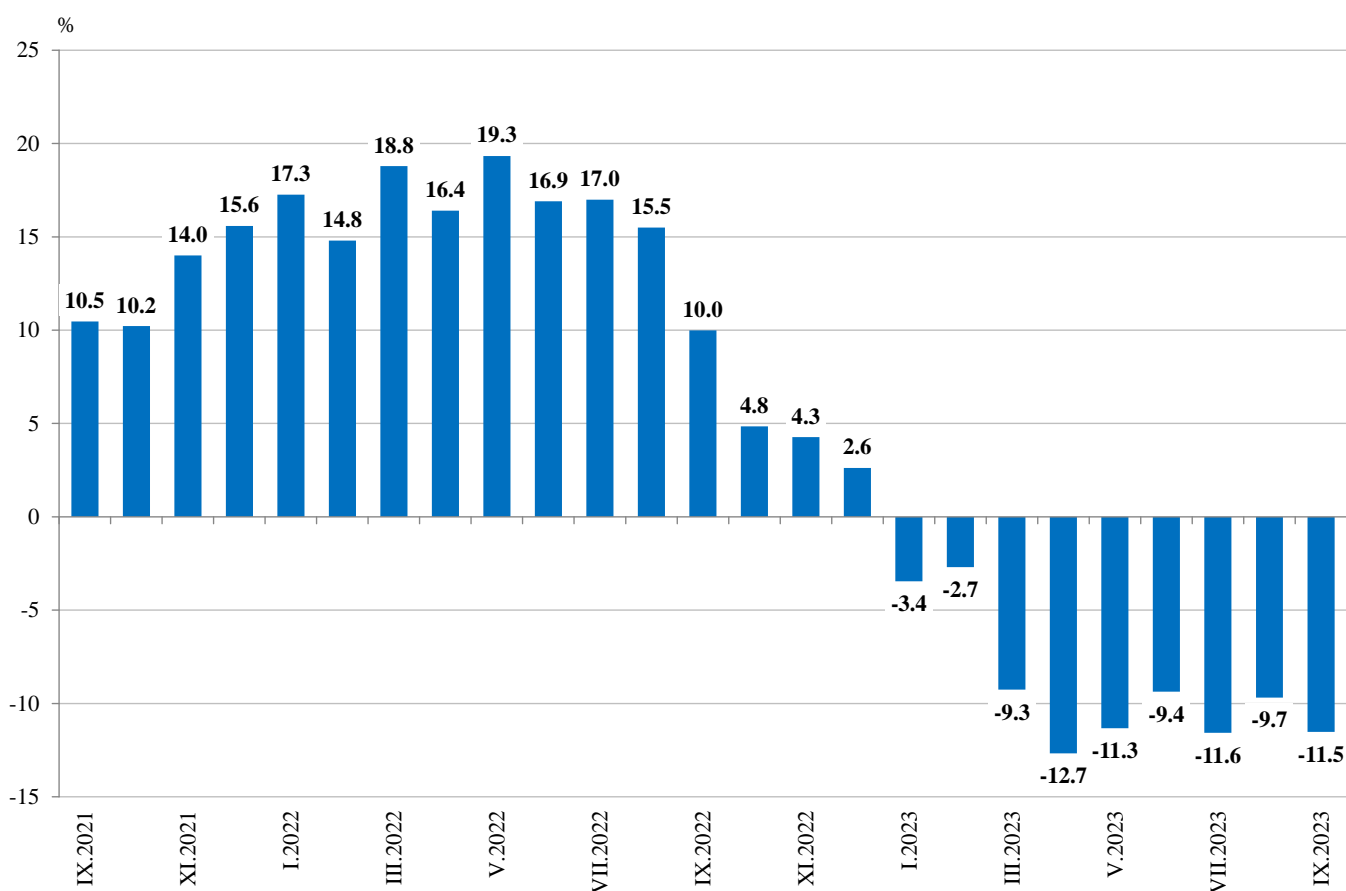
Annual changes

On an annual basis, a drop of the Industrial Production Index was observed in the electricity, gas, steam and air conditioning supply - by 31.8%, in the mining and quarrying industry - by 17.2%, and in the manufacturing - by 7.7%.

A most significant production decrease in manufacturing, compared to the same month of the previous year, was registered in the manufacture of computer, electronic and optical products - by 34.0%, in the manufacture of textiles - by 29.8%, in the manufacture of furniture - by 27.0%, and in the manufacture of other non-metallic mineral products - by 24.2%.

An increase was seen in the manufacture of basic metals - by 9.9%, and in the manufacture of basic pharmaceutical products and pharmaceutical preparations - by 4.7%.

Figure 3. Changes of Industrial Production Indices compared to the same month of the previous year (Calendar-adjusted)



Annex

Table 1

Changes of Industrial Production Indices compared to the previous month¹

(Per cent)

Economic activities	NACE.BG - 2008	2023					
		IV	V	VI	VII	VIII	IX*
Industry	B_TO_E36	-2.9	1.5	0.4	-1.2	0.8	-2.7
Mining and quarrying	B	-8.7	-4.9	4.1	-8.1	5.5	-3.2
Mining of coal and lignite	B05	-15.3	-17.8	-10.2	19.0	0.5	-18.1
Extraction of crude petroleum and natural gas	B06
Mining of metal ores	B07	-14.7	2.9	12.9	-23.3	14.7	4.9
Other mining and quarrying	B08	-9.8	16.5	-0.7	-12.2	-0.4	-7.7
Mining support service activities	B09
Manufacturing	C	-3.4	0.4	0.3	0.9	1.1	-3.1
Manufacture of food products	C10	4.1	-2.1	-5.6	3.0	0.5	-1.6
Manufacture of beverages	C11	-6.9	-2.1	0.0	0.2	-2.7	0.7
Manufacture of tobacco products	C12	-12.9	0.4	-1.2	-16.4	46.3	-11.9
Manufacture of textiles	C13	-6.8	-3.1	-1.1	-1.4	7.7	-8.7
Manufacture of wearing apparel	C14	-7.5	1.7	1.4	-7.1	-3.2	7.0
Manufacture of leather and related products	C15	-11.2	2.0	-2.5	-8.7	0.2	1.9
Manufacture of wood and of products of wood and cork, except furniture; manufacture of articles of straw and plaiting materials	C16	-8.3	4.0	-2.0	-2.5	-1.9	-2.7
Manufacture of paper and paper products	C17	-7.2	0.2	4.5	-9.1	-6.0	12.7
Printing and reproduction of recorded media	C18	-5.0	-0.1	6.0	-5.2	-1.4	2.8
Manufacture of coke and refined petroleum products	C19
Manufacture of chemicals and chemical products	C20	-0.2	-11.3	-0.9	6.9	8.0	-0.2
Manufacture of basic pharmaceutical products and pharmaceutical preparations	C21	4.2	-1.3	4.7	-2.6	1.6	1.1
Manufacture of rubber and plastic products	C22	-0.1	0.5	-2.3	-2.6	-0.9	2.1
Manufacture of other non-metallic mineral products	C23	-11.5	-2.0	-2.1	3.1	-2.8	-3.6
Manufacture of basic metals	C24	-3.4	8.3	0.0	0.5	10.9	6.3
Manufacture of fabricated metal products, except machinery and equipment	C25	-5.8	6.7	-5.5	7.3	4.5	-15.8
Manufacture of computer, electronic and optical products	C26	0.4	-0.8	-2.1	-5.7	4.7	-12.2
Manufacture of electrical equipment	C27	1.6	-2.4	7.7	-2.1	-1.8	-7.7
Manufacture of machinery and equipment n.e.c.	C28	-2.6	2.1	-3.4	-0.8	-4.6	3.7
Manufacture of motor vehicles, trailers and semi-trailers	C29	-5.4	8.9	-5.4	-3.6	9.9	-3.5
Manufacture of other transport equipment	C30	-8.9	8.1	-6.0	8.1	10.4	-13.4
Manufacture of furniture	C31	11.2	-11.4	9.1	-8.7	-4.7	-4.9
Other manufacturing	C32	-5.6	1.8	-1.1	2.2	2.6	-14.0
Repair and installation of machinery and equipment	C33	12.8	-3.3	-0.1	-7.8	9.2	-4.3
Electricity, gas, steam and air conditioning supply	D	-6.3	9.1	6.7	-7.3	1.0	-0.5
Electricity, gas, steam and air conditioning supply	D35	-6.3	9.1	6.7	-7.3	1.0	-0.5

¹ Seasonally adjusted.

* Preliminary data.

„..“ - Confidential data.



Table 2

Changes of Industrial Production Indices compared to the same month of the previous year¹

(Per cent)

Economic activities	NACE.BG - 2008	2023					
		IV	V	VI	VII	VIII	IX*
Industry	B_TO_E36	-12.7	-11.3	-9.4	-11.6	-9.7	-11.5
Mining and quarrying	B	-10.4	-24.2	-10.8	-23.5	-12.1	-17.2
Mining of coal and lignite	B05	-53.9	-68.7	-70.1	-56.2	-45.5	-54.1
Extraction of crude petroleum and natural gas	B06
Mining of metal ores	B07	28.1	4.0	24.2	-1.2	11.7	14.3
Other mining and quarrying	B08	-16.3	4.2	2.8	-11.5	-12.2	-22.4
Mining support service activities	B09
Manufacturing	C	-8.4	-8.6	-6.4	-3.4	-1.9	-7.7
Manufacture of food products	C10	-10.3	-12.3	-13.2	-6.7	-14.2	-7.7
Manufacture of beverages	C11	-6.2	-5.4	-7.4	-1.4	-8.4	-6.2
Manufacture of tobacco products	C12	-30.6	-34.1	-36.6	-50.7	-5.7	-16.8
Manufacture of textiles	C13	-31.3	-29.2	-29.0	-29.0	-25.2	-29.8
Manufacture of wearing apparel	C14	-14.2	-10.8	-3.7	-10.0	-11.3	-7.8
Manufacture of leather and related products	C15	-15.0	-4.3	-6.6	-14.7	-11.3	-14.7
Manufacture of wood and of products of wood and cork, except furniture; manufacture of articles of straw and plaiting materials	C16	-31.0	-28.3	-16.6	-22.1	-16.5	-18.0
Manufacture of paper and paper products	C17	-14.9	-17.5	-9.6	-20.4	-24.6	-7.0
Printing and reproduction of recorded media	C18	-13.9	-15.0	0.1	-8.9	-8.0	-4.0
Manufacture of coke and refined petroleum products	C19
Manufacture of chemicals and chemical products	C20	-12.2	-24.3	-17.5	-10.1	5.5	2.1
Manufacture of basic pharmaceutical products and pharmaceutical preparations	C21	-4.5	-3.1	-7.0	-1.5	10.3	4.7
Manufacture of rubber and plastic products	C22	-12.0	-10.9	-10.5	-12.4	-9.3	-7.5
Manufacture of other non-metallic mineral products	C23	-17.1	-20.4	-19.6	-14.7	-20.0	-24.2
Manufacture of basic metals	C24	-21.8	-14.7	-11.8	-8.0	1.0	9.9
Manufacture of fabricated metal products, except machinery and equipment	C25	-6.4	16.0	12.3	30.8	26.6	1.9
Manufacture of computer, electronic and optical products	C26	-5.3	-9.0	-7.7	-21.0	-5.2	-34.0
Manufacture of electrical equipment	C27	3.7	-2.3	9.0	6.3	5.7	-7.8
Manufacture of machinery and equipment n.e.c.	C28	-9.4	-9.3	-9.6	-12.6	-17.6	-10.0
Manufacture of motor vehicles, trailers and semi-trailers	C29	13.4	22.8	1.3	8.1	9.8	2.1
Manufacture of other transport equipment	C30	18.0	21.0	-0.5	-2.8	21.4	-7.6
Manufacture of furniture	C31	-8.3	-25.5	-12.7	-20.2	-16.7	-27.0
Other manufacturing	C32	-1.3	-2.0	-13.5	8.1	13.4	-7.5
Repair and installation of machinery and equipment	C33	14.2	-13.6	8.4	-4.3	-3.9	-4.8
Electricity, gas, steam and air conditioning supply	D	-38.3	-26.7	-26.7	-41.9	-40.6	-31.8
Electricity, gas, steam and air conditioning supply	D35	-38.3	-26.7	-26.7	-41.9	-40.6	-31.8

¹ Calendar-adjusted.

* Preliminary data.

„..“ - Confidential data.



Table 3

Industrial Production Indices
(Seasonally adjusted, 2015 = 100)

NACE.BG - 2008	2022				2023								
	IX	X	XI	XII	I	II	III	IV	V	VI	VII	VIII	IX*
B_TO_E36	125.3	122.3	123.0	122.7	119.6	118.8	116.2	112.9	114.6	115.0	113.7	114.6	111.5
B	119.8	111.9	117.9	124.6	111.3	115.4	117.2	106.9	101.7	106.0	97.4	102.7	99.4
B05	109.2	90.9	109.2	101.3	92.4	91.8	77.4	65.6	53.9	48.4	57.6	57.9	47.4
B06
B07	124.1	118.7	122.9	153.8	108.1	128.7	155.1	132.3	136.2	153.7	117.9	135.2	141.9
B08	147.8	145.3	142.1	136.3	162.8	135.8	138.3	124.7	145.4	144.4	126.7	126.2	116.5
B09
C	134.5	135.0	132.2	135.9	132.9	128.6	129.4	125.0	125.4	125.8	127.0	128.4	124.4
C10	117.7	117.7	111.4	122.3	121.6	111.3	111.0	115.6	113.2	106.8	110.0	110.6	108.8
C11	105.6	110.9	110.6	112.3	112.3	103.4	111.1	103.4	101.3	101.3	101.5	98.8	99.5
C12	38.6	43.1	29.6	34.2	41.6	41.5	35.0	30.5	30.6	30.2	25.3	37.0	32.6
C13	109.8	101.1	106.4	106.3	97.9	89.9	89.1	83.0	80.5	79.6	78.5	84.5	77.1
C14	82.2	83.7	79.3	80.1	77.3	82.2	82.4	76.2	77.5	78.6	73.0	70.7	75.6
C15	67.0	66.7	64.5	64.5	62.3	60.7	71.7	63.6	64.9	63.2	57.7	57.8	59.0
C16	84.7	87.7	91.2	83.9	79.2	79.6	80.4	73.7	76.7	75.2	73.3	71.9	70.0
C17	101.0	112.6	111.6	103.7	107.6	100.7	99.8	92.6	92.8	97.0	88.2	82.9	93.5
C18	109.3	112.3	105.5	106.4	105.3	104.4	108.3	102.8	102.7	108.9	103.2	101.8	104.7
C19
C20	116.0	110.2	132.1	141.9	122.5	115.0	116.8	116.6	103.5	102.6	109.7	118.4	118.2
C21	125.0	129.1	117.8	145.8	126.8	130.6	119.1	124.2	122.6	128.4	125.0	127.0	128.5
C22	136.2	135.2	124.5	133.6	133.4	131.7	130.0	129.9	130.6	127.7	124.3	123.1	125.7
C23	135.0	133.0	127.2	129.1	142.2	130.8	126.0	111.5	109.3	106.9	110.2	107.2	103.3
C24	118.0	118.6	111.3	115.1	109.7	99.7	101.4	97.9	106.1	106.2	106.7	118.3	125.7
C25	155.3	161.3	178.2	150.3	195.9	163.2	179.1	168.7	180.1	170.1	182.5	190.7	160.5
C26	338.9	308.5	237.3	247.4	272.7	269.9	272.0	273.1	270.7	265.0	249.9	261.6	229.8
C27	168.4	166.6	170.5	179.6	172.2	169.8	167.9	170.5	166.5	179.2	175.4	172.3	159.0
C28	129.6	133.6	125.4	121.5	123.4	124.6	123.9	120.8	123.4	119.2	118.2	112.7	116.9
C29	163.4	160.1	167.9	186.0	158.9	155.4	166.9	157.9	172.1	162.7	156.9	172.4	166.4
C30	330.4	363.1	338.5	332.1	318.6	292.6	327.2	298.1	322.4	302.9	327.6	361.6	313.1
C31	105.7	105.9	100.4	99.9	87.1	89.4	88.3	98.3	87.1	95.0	86.8	82.7	78.6
C32	207.8	206.8	210.2	229.1	211.1	214.6	227.4	214.6	218.5	216.2	221.0	226.7	194.9
C33	131.7	121.3	118.2	118.9	149.0	128.3	119.6	135.0	130.6	130.4	120.3	131.4	125.7
D	92.7	67.5	91.9	79.3	77.5	86.1	70.8	66.3	72.3	77.2	71.5	72.3	71.9
35	92.7	67.5	91.9	79.3	77.5	86.1	70.8	66.3	72.3	77.2	71.5	72.3	71.9

* Preliminary data.

„...“ - Confidential data.



Table 4

Industrial Production Indices
(Calendar-adjusted, 2015 = 100)

NACE.BG - 2008	2020	2021	2022				2023								
	IX	IX	IX	X	XI	XII	I	II	III	IV	V	VI	VII	VIII	IX*
B_TO_E36	103.3	114.2	125.6	125.7	128.9	123.7	112.9	112.3	121.2	107.9	109.4	117.7	117.3	112.4	111.1
B	107.8	129.3	125.2	123.5	126.8	137.0	107.5	110.5	115.1	97.6	95.2	102.3	94.2	100.4	103.7
B05	65.4	114.8	114.8	110.8	123.2	117.2	106.0	94.3	71.1	46.7	35.6	28.4	50.2	53.8	52.7
B06
B07	141.1	133.0	124.1	118.7	122.9	153.8	108.1	128.7	155.1	132.3	136.2	153.7	117.9	135.2	141.9
B08	117.3	158.6	161.2	160.5	159.6	136.4	117.7	106.0	132.8	118.3	148.5	155.5	132.4	131.6	125.1
B09
C	111.9	119.6	135.3	142.1	136.6	130.2	120.5	118.3	132.8	124.1	125.3	132.2	131.7	123.1	124.9
C10	110.7	117.8	122.7	128.1	115.7	126.5	109.1	97.2	111.2	110.7	113.1	108.7	110.2	112.5	113.2
C11	115.3	103.8	116.0	104.4	99.6	103.8	79.5	72.5	104.1	97.5	105.1	121.4	125.5	123.3	108.8
C12	32.6	44.7	41.3	47.1	26.3	28.5	26.0	29.0	32.1	31.8	33.2	39.2	24.5	41.1	34.4
C13	93.5	118.2	107.1	107.0	110.1	95.9	90.1	89.7	95.8	82.1	84.3	85.0	77.8	71.2	75.2
C14	70.6	69.4	80.3	85.0	79.2	76.5	81.0	82.9	83.4	69.6	72.2	83.3	82.4	65.6	74.0
C15	69.4	67.5	66.6	71.7	67.7	59.6	64.7	59.4	78.5	59.6	60.3	67.4	63.5	46.5	56.8
C16	78.0	94.2	88.0	93.2	97.1	78.9	65.9	69.4	80.6	73.9	80.3	79.1	78.7	70.5	72.1
C17	84.8	109.3	99.0	116.9	113.4	97.3	104.8	95.8	104.3	89.9	92.8	101.5	90.8	79.4	92.1
C18	100.5	112.8	105.3	121.4	119.4	108.1	93.6	95.5	110.1	101.5	102.9	111.9	103.8	96.2	101.1
C19
C20	108.1	118.7	114.5	110.5	135.5	141.0	115.0	109.2	127.9	117.8	102.3	105.1	111.2	113.0	116.9
C21	109.9	112.4	118.2	131.7	125.6	163.3	120.6	115.7	122.3	123.7	119.1	137.8	124.5	115.1	123.7
C22	150.3	144.8	138.1	148.2	123.8	117.7	124.7	127.3	137.1	127.1	130.1	133.5	129.8	116.4	127.7
C23	120.2	131.3	145.2	148.4	137.4	112.5	102.8	107.4	123.6	112.3	115.9	112.5	118.5	112.7	110.0
C24	111.1	86.4	109.1	125.3	107.0	117.7	114.5	96.5	109.3	94.5	106.8	105.0	106.7	110.4	119.8
C25	129.2	125.7	158.9	166.5	196.4	159.7	151.2	145.9	180.7	169.9	176.9	180.0	194.5	186.5	161.9
C26	143.1	226.7	341.4	352.8	252.8	239.8	258.0	248.9	278.6	268.1	263.6	275.2	253.7	230.1	225.4
C27	137.5	158.8	173.8	178.7	183.2	160.7	162.9	166.4	174.8	171.0	158.2	191.2	180.3	155.5	160.2
C28	107.9	116.2	129.1	142.9	133.0	113.6	112.8	119.7	130.2	123.7	121.4	126.9	124.6	97.7	116.2
C29	153.7	114.9	162.4	167.8	184.3	172.6	159.2	158.7	181.8	153.2	168.1	171.1	145.7	152.4	165.8
C30	159.6	224.8	304.9	384.5	361.3	280.0	279.2	290.6	356.6	301.0	314.0	324.1	338.1	292.8	281.6
C31	109.5	111.5	109.3	116.9	108.4	97.0	76.2	82.4	88.6	95.5	84.4	101.3	91.3	78.2	79.8
C32	121.2	181.5	220.1	222.0	226.9	207.7	183.6	189.9	232.0	208.7	213.6	247.0	221.8	226.0	203.5
C33	97.9	127.4	138.3	124.8	129.2	155.8	109.4	110.7	121.6	121.5	123.9	134.0	122.1	128.5	131.8
D	67.0	86.7	88.0	66.6	103.3	95.5	88.5	93.3	81.2	53.0	52.4	68.3	72.2	73.9	60.0
D35	67.0	86.7	88.0	66.6	103.3	95.5	88.5	93.3	81.2	53.0	52.4	68.3	72.2	73.9	60.0

* Preliminary data.

„...“ - Confidential data.