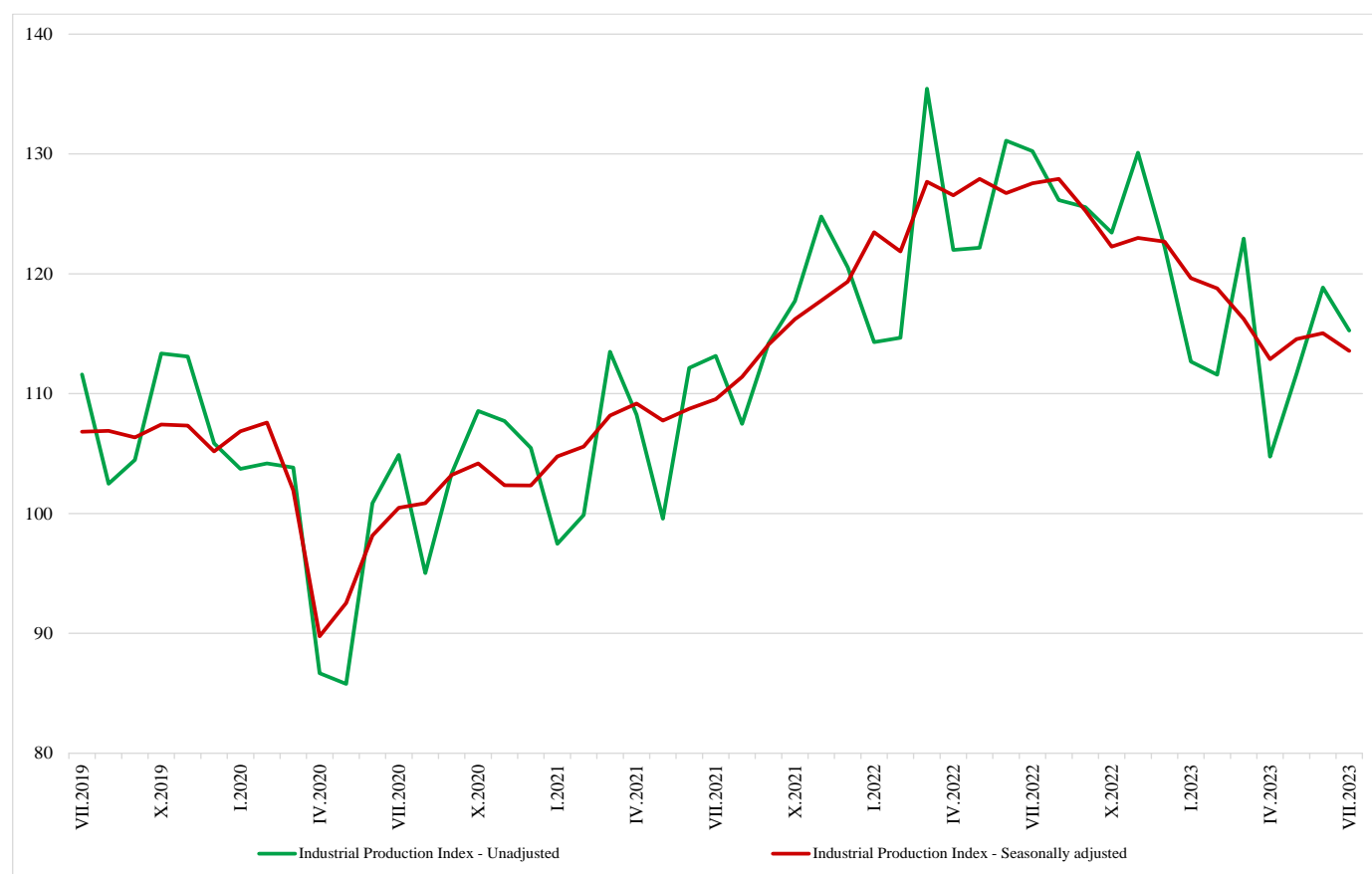


INDUSTRIAL PRODUCTION INDICES IN JULY 2023¹

The Industrial Production Index² decreased by 1.3% in July 2023 compared to the previous month. The data are preliminary and seasonally adjusted³.

In July 2023, a drop of 11.5% was registered in the calendar-adjusted⁴ Industrial Production Index in comparison with the same month in 2022.

Figure 1. Industrial Production Indices (2015 = 100)



¹ July 2023 data is preliminary. The final data on Industrial Production and Turnover Indices for June 2023 can be found on the NSI website: <http://www.nsi.bg/en>.

² The Monthly Industrial Production and Industrial Turnover Indices measure changes in production and turnover values of industrial enterprises. This information can be used to assess the current economic development and for short-term forecasts. Indices do not measure the actual production level; they aim to measure the average change in the value of production between two points in time. Indices are compiled based on information collected through a representative sampling survey on industrial enterprises. The sample covers enterprises with an annual turnover of more than 97% of the total turnover in the industry. Industrial Production Indices are calculated at a constant base year that is to say they are weighted with the structure of the value added at factor costs in the base year.

³ Seasonal adjustment is a statistical method, which eliminates the seasonal component of the time series.

⁴ Calendar adjustment is an adjustment for variations caused by calendar effects, different number of calendar and working days in the months, national holidays and outliers (for example, the presence of more non-working days in May could contribute to the decline in production in some activities).

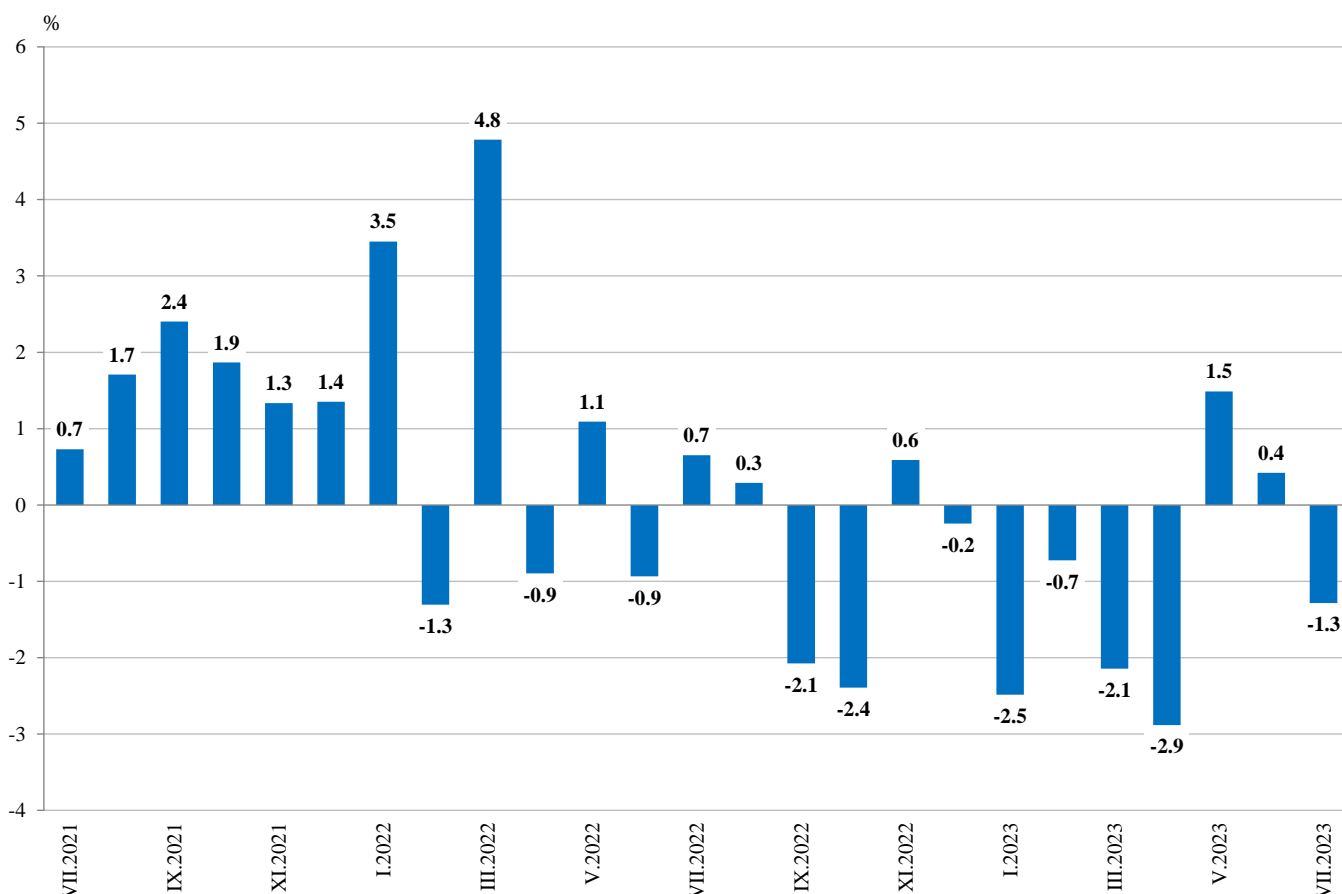
Monthly changes

In July 2023, compared to the previous month, a decline was reported in the electricity, gas, steam and air conditioning supply - by 8.4%, in the mining and quarrying industry - by 8.1%, while the production increase in the manufacturing - by 0.9%.

More considerable increase in the manufacturing was registered in the manufacture of other transport equipment - by 10.3%, in the manufacture of chemicals and chemical products - by 8.6%, and in the manufacture of fabricated metal products, except machinery and equipment - by 7.8%.

A decline was reported in the manufacture of tobacco products - by 21.5%, in the manufacture of paper and paper products - by 8.3%, and in the manufacture of leather and related products - by 8.2%.

**Figure 2. Changes of Industrial Production Indices compared to the previous month
(Seasonally adjusted)**



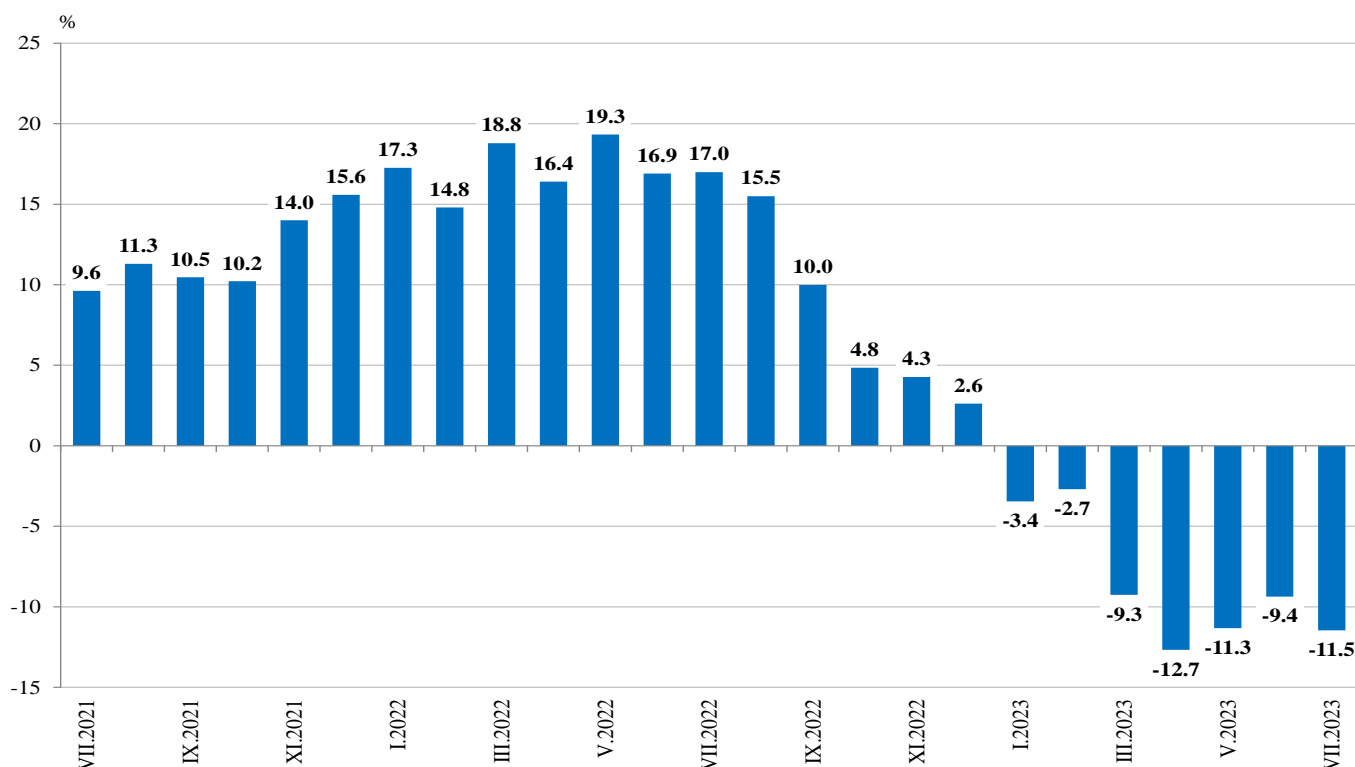
Annual changes

Compared to July 2022, a drop was observed in the electricity, gas, steam and air conditioning supply - by 42.6%, in the mining and quarrying industry - by 23.5%, and in the manufacturing - by 3.1%.

The most significant production decrease in manufacturing compared to the same month of the previous year was registered in the manufacture of tobacco products - by 50.7%, in the manufacture of textiles - by 29.0%, in the manufacture of wood and of products of wood and cork, except furniture; manufacture of articles of straw and plaiting materials - by 22.0%, in the manufacture of computer, electronic and optical products - by 20.8%, and in the manufacture of paper and paper products - by 20.3%.

An increase was seen in the manufacture of fabricated metal products, except machinery and equipment - by 31.8%, in the manufacture of motor vehicles, trailers and semi-trailers and in the other manufacturing - both by 8.1%.

Figure 3. Changes of Industrial Production Indices compared to the same month of the previous year (Calendar-adjusted)





Annex

Table 1

Changes of Industrial Production Indices compared to the previous month¹

(Per cent)

Economic activities	NACE.BG - 2008	2023					
		II	III	IV	V	VI	VII*
Industry	B_TO_E36	-0.7	-2.1	-2.9	1.5	0.4	-1.3
Mining and quarrying	B	3.7	1.5	-8.7	-4.9	4.1	-8.1
Mining of coal and lignite	B05	-0.6	-15.7	-15.3	-17.8	-10.2	17.9
Extraction of crude petroleum and natural gas	B06
Mining of metal ores	B07	19.1	20.5	-14.7	2.9	12.9	-23.3
Other mining and quarrying	B08	-16.6	1.9	-9.8	16.5	-0.7	-11.3
Mining support service activities	B09
Manufacturing	C	-3.2	0.6	-3.4	0.4	0.3	0.9
Manufacture of food products	C10	-8.5	-0.2	4.1	-2.1	-5.6	3.3
Manufacture of beverages	C11	-7.9	7.5	-6.9	-2.1	0.0	0.6
Manufacture of tobacco products	C12	-0.3	-15.7	-12.9	0.4	-1.2	-21.5
Manufacture of textiles	C13	-8.2	-0.9	-6.8	-3.1	-1.1	-1.9
Manufacture of wearing apparel	C14	6.4	0.2	-7.5	1.7	1.4	-7.4
Manufacture of leather and related products	C15	-2.5	18.0	-11.2	2.0	-2.5	-8.2
Manufacture of wood and of products of wood and cork, except furniture; manufacture of articles of straw and plaiting materials	C16	0.5	0.9	-8.3	4.0	-2.0	-2.2
Manufacture of paper and paper products	C17	-6.4	-0.9	-7.2	0.2	4.5	-8.3
Printing and reproduction of recorded media	C18	-0.8	3.8	-5.0	-0.1	6.0	-5.0
Manufacture of coke and refined petroleum products	C19
Manufacture of chemicals and chemical products	C20	-6.1	1.6	-0.2	-11.3	-0.9	8.6
Manufacture of basic pharmaceutical products and pharmaceutical preparations	C21	3.0	-8.8	4.2	-1.3	4.7	-2.8
Manufacture of rubber and plastic products	C22	-1.3	-1.3	-0.1	0.5	-2.3	-2.4
Manufacture of other non-metallic mineral products	C23	-8.0	-3.7	-11.5	-2.0	-2.1	3.5
Manufacture of basic metals	C24	-9.1	1.7	-3.4	8.3	0.0	-0.4
Manufacture of fabricated metal products, except machinery and equipment	C25	-16.7	9.7	-5.8	6.7	-5.5	7.8
Manufacture of computer, electronic and optical products	C26	-1.0	0.8	0.4	-0.8	-2.1	-5.4
Manufacture of electrical equipment	C27	-1.4	-1.1	1.6	-2.4	7.7	-1.9
Manufacture of machinery and equipment n.e.c.	C28	1.0	-0.5	-2.6	2.1	-3.4	-0.6
Manufacture of motor vehicles, trailers and semi-trailers	C29	-2.2	7.4	-5.4	8.9	-5.4	-4.0
Manufacture of other transport equipment	C30	-8.2	11.8	-8.9	8.1	-6.0	10.3
Manufacture of furniture	C31	2.7	-1.2	11.2	-11.4	9.1	-7.8
Other manufacturing	C32	1.6	6.0	-5.6	1.8	-1.1	2.2
Repair and installation of machinery and equipment	C33	-13.9	-6.7	12.8	-3.3	-0.1	-7.5
Electricity, gas, steam and air conditioning supply	D	11.0	-17.8	-6.3	9.1	6.7	-8.4
Electricity, gas, steam and air conditioning supply	D35	11.0	-17.8	-6.3	9.1	6.7	-8.4

¹ Seasonally adjusted.

* Preliminary data.

„..“ - Confidential data.



Table 2

Changes of Industrial Production Indices compared to the same month of the previous year¹

(Per cent)

Economic activities	NACE.BG - 2008	2023					
		II	III	IV	V	VI	VII*
Industry	B_TO_E36	-2.7	-9.3	-12.7	-11.3	-9.4	-11.5
Mining and quarrying	B	-10.4	-14.7	-10.4	-24.2	-10.8	-23.5
Mining of coal and lignite	B05	-30.1	-50.8	-53.9	-68.7	-70.1	-56.7
Extraction of crude petroleum and natural gas	B06
Mining of metal ores	B07	8.8	19.4	28.1	4.0	24.2	-1.2
Other mining and quarrying	B08	-9.1	-8.5	-16.3	4.2	2.8	-10.7
Mining support service activities	B09
Manufacturing	C	0.8	-1.4	-8.4	-8.6	-6.4	-3.1
Manufacture of food products	C10	-7.7	-14.3	-10.3	-12.3	-13.2	-6.4
Manufacture of beverages	C11	1.3	9.6	-6.2	-5.4	-7.4	-1.3
Manufacture of tobacco products	C12	47.1	-10.2	-30.6	-34.1	-36.6	-50.7
Manufacture of textiles	C13	-25.0	-25.0	-31.3	-29.2	-29.0	-29.0
Manufacture of wearing apparel	C14	6.0	-2.6	-14.2	-10.8	-3.7	-11.0
Manufacture of leather and related products	C15	-23.1	7.7	-15.0	-4.3	-6.6	-14.3
Manufacture of wood and of products of wood and cork, except furniture; manufacture of articles of straw and plaiting materials	C16	-18.3	-25.4	-31.0	-28.3	-16.6	-22.0
Manufacture of paper and paper products	C17	-4.9	-7.5	-14.9	-17.5	-9.6	-20.3
Printing and reproduction of recorded media	C18	-6.8	-7.3	-13.9	-15.0	0.1	-8.8
Manufacture of coke and refined petroleum products	C19
Manufacture of chemicals and chemical products	C20	-22.5	-19.4	-12.2	-24.3	-17.5	-8.2
Manufacture of basic pharmaceutical products and pharmaceutical preparations	C21	14.0	-2.9	-4.5	-3.1	-7.0	-1.7
Manufacture of rubber and plastic products	C22	-11.2	-12.2	-12.0	-10.9	-10.5	-12.3
Manufacture of other non-metallic mineral products	C23	-2.6	-4.2	-17.1	-20.4	-19.6	-14.6
Manufacture of basic metals	C24	-17.8	-14.3	-21.8	-14.7	-11.8	-7.9
Manufacture of fabricated metal products, except machinery and equipment	C25	36.2	44.6	-6.4	16.0	12.3	31.8
Manufacture of computer, electronic and optical products	C26	11.1	7.0	-5.3	-9.0	-7.7	-20.8
Manufacture of electrical equipment	C27	9.1	4.7	3.7	-2.3	9.0	6.4
Manufacture of machinery and equipment n.e.c.	C28	-3.6	-6.5	-9.4	-9.3	-9.6	-13.0
Manufacture of motor vehicles, trailers and semi-trailers	C29	2.5	8.1	13.4	22.8	1.3	8.1
Manufacture of other transport equipment	C30	11.5	49.1	18.0	21.0	-0.5	0.4
Manufacture of furniture	C31	-23.8	-25.4	-8.3	-25.5	-12.7	-19.8
Other manufacturing	C32	19.1	6.9	-1.3	-2.0	-13.5	8.1
Repair and installation of machinery and equipment	C33	8.0	-13.8	14.2	-13.6	8.4	-3.9
Electricity, gas, steam and air conditioning supply	D	-12.0	-39.3	-38.3	-26.7	-26.7	-42.6
Electricity, gas, steam and air conditioning supply	D35	-12.0	-39.3	-38.3	-26.7	-26.7	-42.6

¹ Calendar-adjusted.

* Preliminary data.

„..“ - Confidential data.



Table 3

Industrial Production Indices
(Seasonally adjusted, 2015 = 100)

NACE.BG - 2008	2022						2023						
	VII	VIII	IX	X	XI	XII	I	II	III	IV	V	VI	VII*
B_TO_E36	127.6	127.9	125.3	122.3	123.0	122.7	119.6	118.8	116.2	112.9	114.6	115.0	113.6
B	126.6	116.9	119.8	111.9	117.9	124.6	111.3	115.4	117.2	106.9	101.7	106.0	97.4
B05	121.7	102.8	109.2	90.9	109.2	101.3	92.4	91.8	77.4	65.6	53.9	48.4	57.0
B06
B07	119.4	121.0	124.1	118.7	122.9	153.8	108.1	128.7	155.1	132.3	136.2	153.7	117.9
B08	141.1	142.6	147.8	145.3	142.1	136.3	162.8	135.8	138.3	124.7	145.4	144.4	128.1
B09
C	131.0	132.5	134.5	135.0	132.2	135.9	132.9	128.6	129.4	125.0	125.4	125.8	127.0
C10	117.6	129.1	117.7	117.7	111.4	122.3	121.6	111.3	111.0	115.6	113.2	106.8	110.4
C11	102.4	106.5	105.6	110.9	110.6	112.3	112.3	103.4	111.1	103.4	101.3	101.3	101.9
C12	38.6	43.6	38.6	43.1	29.6	34.2	41.6	41.5	35.0	30.5	30.6	30.2	23.7
C13	108.1	116.3	109.8	101.1	106.4	106.3	97.9	89.9	89.1	83.0	80.5	79.6	78.1
C14	80.3	77.5	82.2	83.7	79.3	80.1	77.3	82.2	82.4	76.2	77.5	78.6	72.8
C15	66.7	65.4	67.0	66.7	64.5	64.5	62.3	60.7	71.7	63.6	64.9	63.2	58.1
C16	93.7	85.8	84.7	87.7	91.2	83.9	79.2	79.6	80.4	73.7	76.7	75.2	73.5
C17	111.1	106.9	101.0	112.6	111.6	103.7	107.6	100.7	99.8	92.6	92.8	97.0	88.9
C18	112.9	109.9	109.3	112.3	105.5	106.4	105.3	104.4	108.3	102.8	102.7	108.9	103.4
C19
C20	121.4	112.6	116.0	110.2	132.1	141.9	122.5	115.0	116.8	116.6	103.5	102.6	111.4
C21	126.3	118.8	125.0	129.1	117.8	145.8	126.8	130.6	119.1	124.2	122.6	128.4	124.8
C22	140.8	134.1	136.2	135.2	124.5	133.6	133.4	131.7	130.0	129.9	130.6	127.7	124.6
C23	128.1	133.3	135.0	133.0	127.2	129.1	142.2	130.8	126.0	111.5	109.3	106.9	110.6
C24	118.6	120.3	118.0	118.6	111.3	115.1	109.7	99.7	101.4	97.9	106.1	106.2	105.8
C25	139.6	152.6	155.3	161.3	178.2	150.3	195.9	163.2	179.1	168.7	180.1	170.1	183.4
C26	310.8	277.0	338.9	308.5	237.3	247.4	272.7	269.9	272.0	273.1	270.7	265.0	250.6
C27	165.4	164.5	168.4	166.6	170.5	179.6	172.2	169.8	167.9	170.5	166.5	179.2	175.9
C28	135.1	134.7	129.6	133.6	125.4	121.5	123.4	124.6	123.9	120.8	123.4	119.2	118.4
C29	143.0	159.0	163.4	160.1	167.9	186.0	158.9	155.4	166.9	157.9	172.1	162.7	156.2
C30	335.2	311.4	330.4	363.1	338.5	332.1	318.6	292.6	327.2	298.1	322.4	302.9	334.0
C31	108.3	98.5	105.7	105.9	100.4	99.9	87.1	89.4	88.3	98.3	87.1	95.0	87.6
C32	203.7	201.3	207.8	206.8	210.2	229.1	211.1	214.6	227.4	214.6	218.5	216.2	220.9
C33	124.6	137.2	131.7	121.3	118.2	118.9	149.0	128.3	119.6	135.0	130.6	130.4	120.6
D	125.1	126.0	92.7	67.5	91.9	79.3	77.5	86.1	70.8	66.3	72.3	77.2	70.7
35	125.1	126.0	92.7	67.5	91.9	79.3	77.5	86.1	70.8	66.3	72.3	77.2	70.7

* Preliminary data.

„...“ - Confidential data.



Table 4

Industrial Production Indices
(Calendar-adjusted, 2015 = 100)

NACE.BG - 2008	2020	2021	2022						2023						
	VII	VII	VII	VIII	IX	X	XI	XII	I	II	III	IV	V	VI	VII*
B_TO_E36	103.5	113.4	132.7	124.4	125.6	125.7	128.9	123.7	112.9	112.3	121.2	107.9	109.4	117.7	117.5
B	96.3	103.6	123.0	114.3	125.2	123.5	126.8	137.0	107.5	110.5	115.1	97.6	95.2	102.3	94.1
B05	56.5	66.0	114.7	98.7	114.8	110.8	123.2	117.2	106.0	94.3	71.1	46.7	35.6	28.4	49.6
B06
B07	131.8	119.7	119.4	121.0	124.1	118.7	122.9	153.8	108.1	128.7	155.1	132.3	136.2	153.7	117.9
B08	107.3	156.4	149.6	149.9	161.2	160.5	159.6	136.4	117.7	106.0	132.8	118.3	148.5	155.5	133.5
B09
C	112.3	122.5	136.4	125.4	135.3	142.1	136.6	130.2	120.5	118.3	132.8	124.1	125.3	132.2	132.2
C10	108.0	115.7	118.2	131.1	122.7	128.1	115.7	126.5	109.1	97.2	111.2	110.7	113.1	108.7	110.6
C11	121.9	125.9	127.3	134.5	116.0	104.4	99.6	103.8	79.5	72.5	104.1	97.5	105.1	121.4	125.6
C12	39.7	62.7	49.8	43.5	41.3	47.1	26.3	28.5	26.0	29.0	32.1	31.8	33.2	39.2	24.5
C13	99.7	112.4	109.6	95.1	107.1	107.0	110.1	95.9	90.1	89.7	95.8	82.1	84.3	85.0	77.7
C14	85.8	79.3	91.5	74.0	80.3	85.0	79.2	76.5	81.0	82.9	83.4	69.6	72.2	83.3	81.4
C15	90.4	85.5	74.5	52.4	66.6	71.7	67.7	59.6	64.7	59.4	78.5	59.6	60.3	67.4	63.8
C16	76.5	90.5	101.0	84.5	88.0	93.2	97.1	78.9	65.9	69.4	80.6	73.9	80.3	79.1	78.8
C17	87.0	107.2	114.2	105.3	99.0	116.9	113.4	97.3	104.8	95.8	104.3	89.9	92.8	101.5	91.0
C18	100.0	119.2	113.9	104.5	105.3	121.4	119.4	108.1	93.6	95.5	110.1	101.5	102.9	111.9	103.9
C19
C20	117.9	126.7	123.6	107.2	114.5	110.5	135.5	141.0	115.0	109.2	127.9	117.8	102.3	105.1	113.5
C21	115.5	119.3	126.3	104.3	118.2	131.7	125.6	163.3	120.6	115.7	122.3	123.7	119.1	137.8	124.2
C22	149.6	148.1	148.2	128.3	138.1	148.2	123.8	117.7	124.7	127.3	137.1	127.1	130.1	133.5	130.0
C23	124.4	128.8	138.9	140.9	145.2	148.4	137.4	112.5	102.8	107.4	123.6	112.3	115.9	112.5	118.7
C24	114.3	95.7	116.0	109.3	109.1	125.3	107.0	117.7	114.5	96.5	109.3	94.5	106.8	105.0	106.8
C25	110.7	143.8	148.7	147.3	158.9	166.5	196.4	159.7	151.2	145.9	180.7	169.9	176.9	180.0	196.0
C26	150.6	213.6	321.0	242.8	341.4	352.8	252.8	239.8	258.0	248.9	278.6	268.1	263.6	275.2	254.3
C27	135.7	150.8	169.5	147.2	173.8	178.7	183.2	160.7	162.9	166.4	174.8	171.0	158.2	191.2	180.4
C28	99.2	121.8	142.5	118.6	129.1	142.9	133.0	113.6	112.8	119.7	130.2	123.7	121.4	126.9	124.1
C29	126.5	115.2	134.8	138.9	162.4	167.8	184.3	172.6	159.2	158.7	181.8	153.2	168.1	171.1	145.8
C30	153.8	250.0	348.0	241.2	304.9	384.5	361.3	280.0	279.2	290.6	356.6	301.0	314.0	324.1	349.5
C31	108.9	112.8	114.3	93.8	109.3	116.9	108.4	97.0	76.2	82.4	88.6	95.5	84.4	101.3	91.7
C32	105.6	142.7	205.1	199.3	220.1	222.0	226.9	207.7	183.6	189.9	232.0	208.7	213.6	247.0	221.8
C33	125.6	103.7	127.5	133.7	138.3	124.8	129.2	155.8	109.4	110.7	121.6	121.5	123.9	134.0	122.5
D	69.8	81.8	124.4	124.4	88.0	66.6	103.3	95.5	88.5	93.3	81.2	53.0	52.4	68.3	71.4
D35	69.8	81.8	124.4	124.4	88.0	66.6	103.3	95.5	88.5	93.3	81.2	53.0	52.4	68.3	71.4

* Preliminary data.

„...“ - Confidential data.