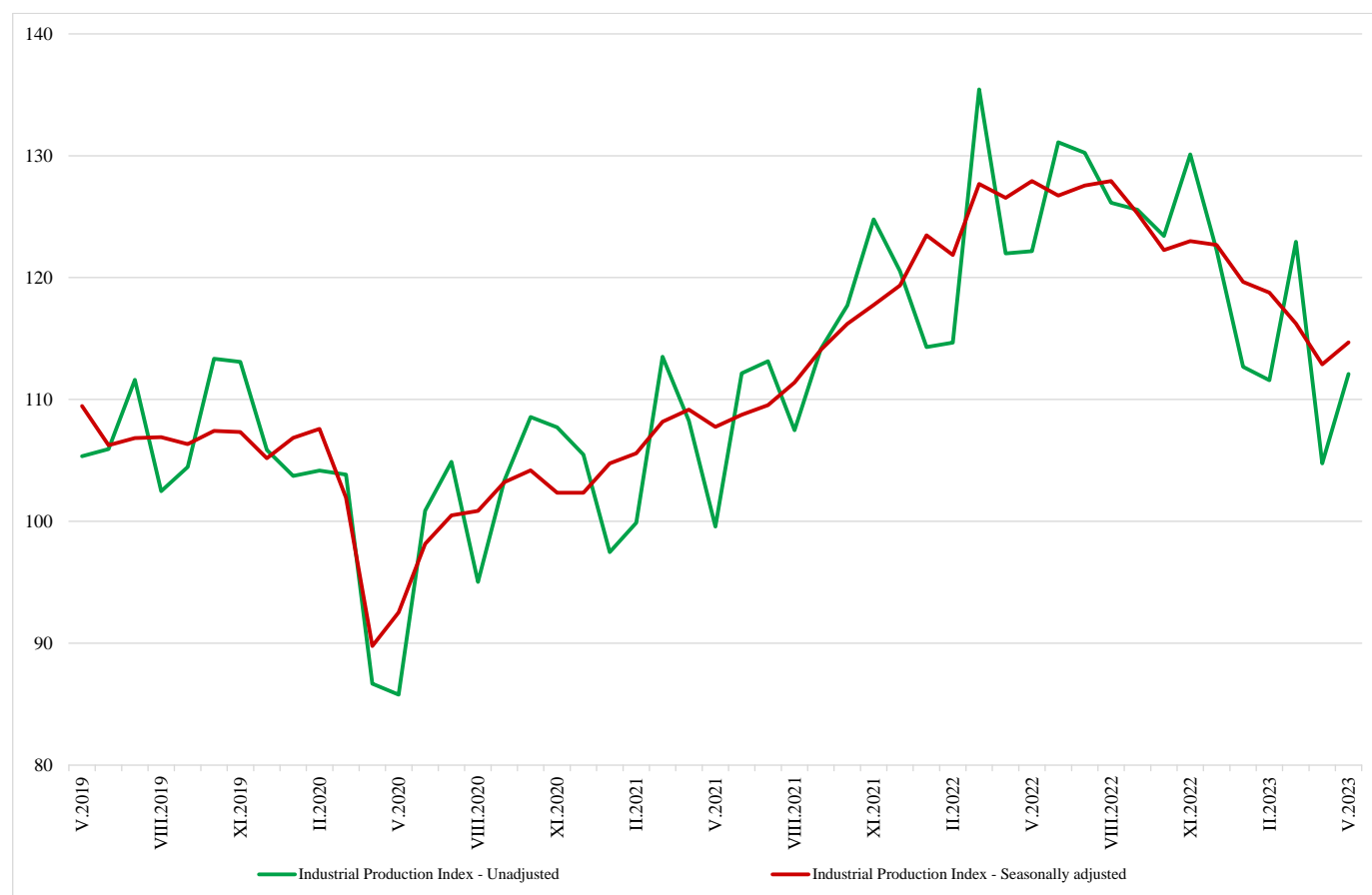


INDUSTRIAL PRODUCTION INDICES IN MAY 2023¹

The Industrial Production Index² increased by 1.6% in May 2023 compared to April 2023. The data are preliminary and seasonally adjusted³.

In May 2023, a decline of 11.0% was registered in the calendar-adjusted⁴ Industrial Production Index in comparison with the same month in 2022.

Figure 1. Industrial Production Indices (2015 = 100)



¹ May 2023 data is preliminary. The final data on Industrial Production and Turnover Indices for April 2023 can be found on the NSI website: <http://www.nsi.bg/en>.

² The Monthly Industrial Production and Industrial Turnover Indices measure changes in production and turnover values of industrial enterprises. This information can be used to assess the current economic development and for short-term forecasts. Indices do not measure the actual production level; they aim to measure the average change in the value of production between two points in time. Indices are compiled based on information collected through a representative sampling survey on industrial enterprises. The sample covers enterprises with an annual turnover of more than 97% of the total turnover in the industry. Industrial Production Indices are calculated at a constant base year that is to say they are weighted with the structure of the value added at factor costs in the base year.

³ Seasonal adjustment is a statistical method, which eliminates the seasonal component of the time series.

⁴ Calendar adjustment is an adjustment for variations caused by calendar effects, different number of calendar and working days in the months, national holidays and outliers (for example, the presence of more non-working days in May could contribute to the decline in production in some activities).

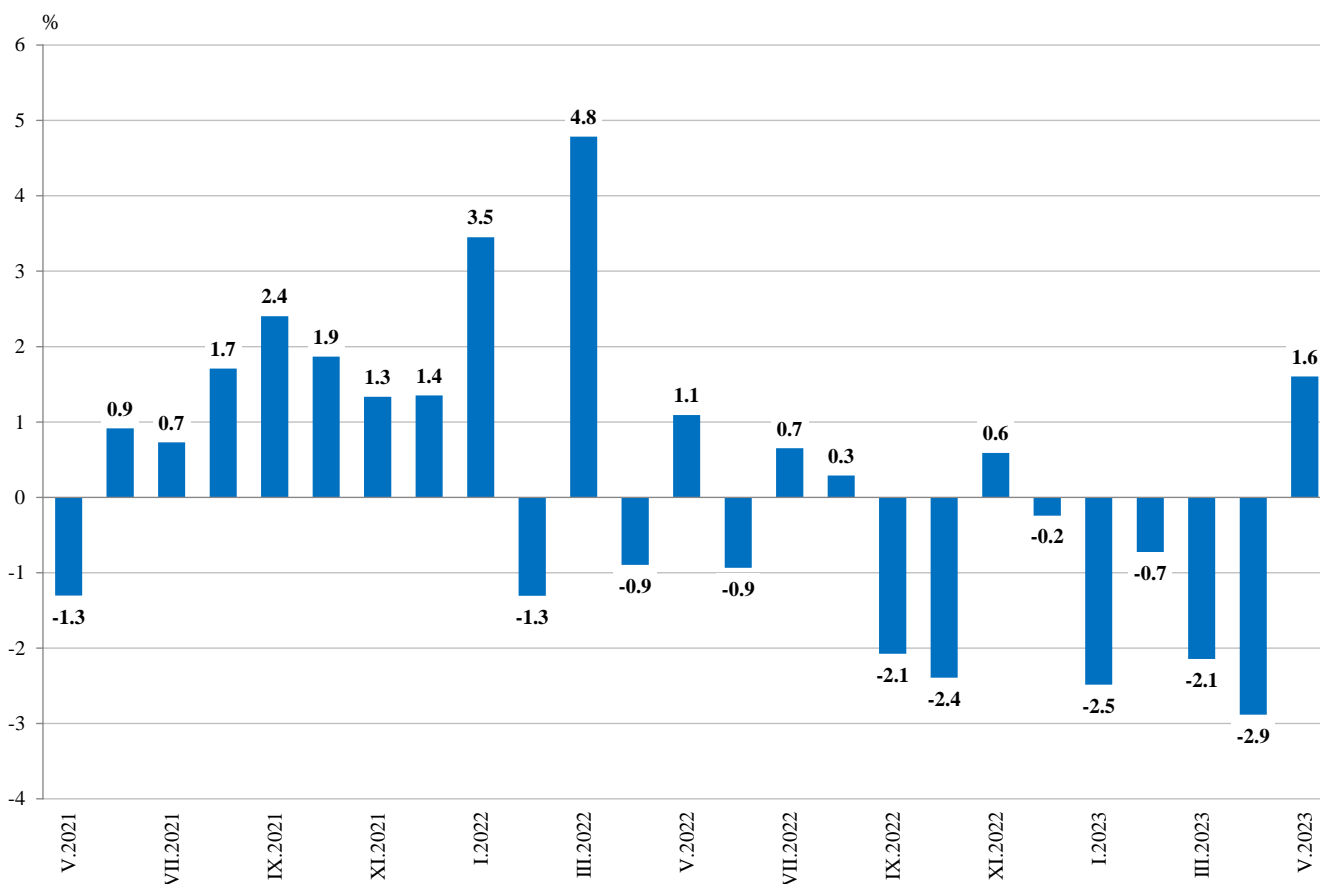
Monthly changes

In May 2023 compared to the previous month, growth was reported in the electricity, gas, steam and air conditioning supply - by 8.8%, and in the manufacturing - by 0.7%, while the production went down in the mining and quarrying industry - by 4.7%.

A more considerable increase in the manufacturing was registered in manufacture of other transport equipment - by 9.4%, in the manufacture of motor vehicles, trailers and semi-trailers by 8.8%, in the manufacture of basic metals - by 4.7%, in the manufacture of wood and of products of wood and cork, except furniture; manufacture of articles of straw and plaiting materials - by 4.1%.

A decline was reported in the manufacture of chemicals and chemical products - by 11.9%, and in the manufacture of furniture - by 11.5%.

**Figure 2. Changes of Industrial Production Indices compared to the previous month
(Seasonally adjusted)**



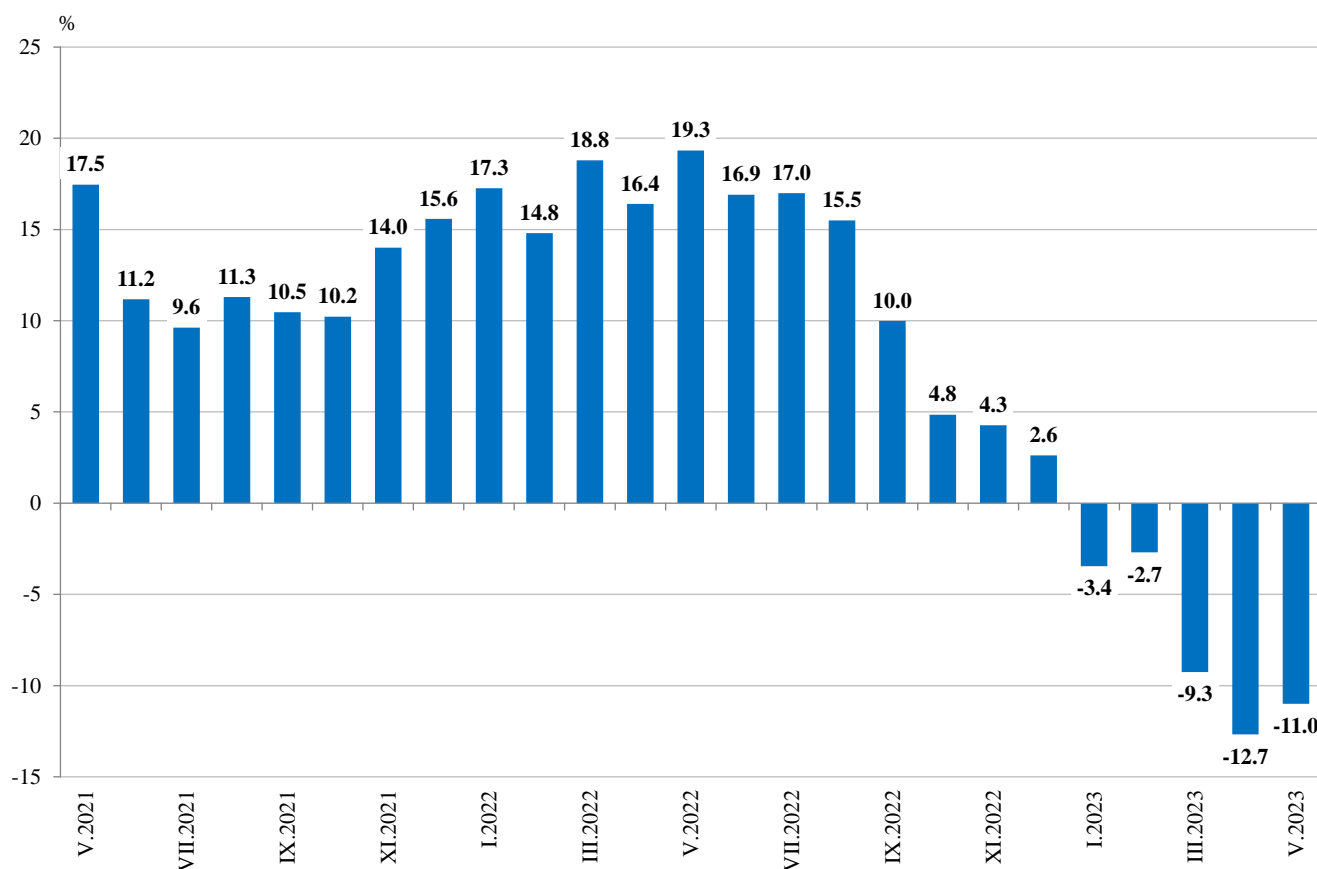
Annual changes

Compared to May 2022, a drop was observed in the electricity, gas, steam and air conditioning supply - by 26.1%, in the mining and quarrying industry - by 24.0%, and in the manufacturing - by 8.3%.

The most significant production decrease in manufacturing compared to the same month of the previous year was registered in manufacture of tobacco products - by 36.7%, in the manufacture of textiles - by 28.7%, in the manufacture of wood and of products of wood and cork, except furniture; manufacture of articles of straw and plaiting materials - by 28.4%, in the manufacture of furniture - by 25.7%, and in the manufacture of chemicals and chemical products - by 25.0%.

An increase was seen in the manufacture of other transport equipment and in the manufacture of motor vehicles, trailers and semi-trailers - both by 22.2%, and in the manufacture of fabricated metal products, except machinery and equipment - by 16.3%.

Figure 3. Changes of Industrial Production Indices compared to the same month of the previous year (Calendar-adjusted)





Annex

Table 1

Changes of Industrial Production Indices compared to the previous month¹

(Per cent)

Economic activities	NACE.BG - 2008	2022	2023				
		XII	I	II	III	IV	V*
Industry	B_TO_E36	-0.2	-2.5	-0.7	-2.1	-2.9	1.6
Mining and quarrying	B	5.6	-10.6	3.7	1.5	-8.7	-4.7
Mining of coal and lignite	B05	-7.3	-8.8	-0.6	-15.7	-15.3	-17.4
Extraction of crude petroleum and natural gas	B06
Mining of metal ores	B07	25.1	-29.7	19.1	20.5	-14.7	2.9
Other mining and quarrying	B08	-4.1	19.5	-16.6	1.9	-9.8	16.3
Mining support service activities	B09
Manufacturing	C	2.7	-2.2	-3.2	0.6	-3.4	0.7
Manufacture of food products	C10	9.8	-0.6	-8.5	-0.2	4.1	0.7
Manufacture of beverages	C11	1.5	0.0	-7.9	7.5	-6.9	-1.4
Manufacture of tobacco products	C12	15.3	21.8	-0.3	-15.7	-12.9	-3.7
Manufacture of textiles	C13	0.0	-7.9	-8.2	-0.9	-6.8	-2.4
Manufacture of wearing apparel	C14	1.0	-3.5	6.4	0.2	-7.5	1.0
Manufacture of leather and related products	C15	-0.1	-3.4	-2.5	18.0	-11.2	1.9
Manufacture of wood and of products of wood and cork, except furniture; manufacture of articles of straw and plaiting materials	C16	-8.0	-5.6	0.5	0.9	-8.3	4.1
Manufacture of paper and paper products	C17	-7.1	3.8	-6.4	-0.9	-7.2	-0.1
Printing and reproduction of recorded media	C18	0.9	-1.1	-0.8	3.8	-5.0	-0.7
Manufacture of coke and refined petroleum products	C19
Manufacture of chemicals and chemical products	C20	7.4	-13.7	-6.1	1.6	-0.2	-11.9
Manufacture of basic pharmaceutical products and pharmaceutical preparations	C21	23.8	-13.0	3.0	-8.8	4.2	-1.5
Manufacture of rubber and plastic products	C22	7.3	-0.1	-1.3	-1.3	-0.1	0.9
Manufacture of other non-metallic mineral products	C23	1.4	10.2	-8.0	-3.7	-11.5	-1.9
Manufacture of basic metals	C24	3.5	-4.7	-9.1	1.7	-3.4	4.7
Manufacture of fabricated metal products, except machinery and equipment	C25	-15.6	30.3	-16.7	9.7	-5.8	7.1
Manufacture of computer, electronic and optical products	C26	4.3	10.2	-1.0	0.8	0.4	-0.6
Manufacture of electrical equipment	C27	5.3	-4.1	-1.4	-1.1	1.6	-3.1
Manufacture of machinery and equipment n.e.c.	C28	-3.1	1.6	1.0	-0.5	-2.6	2.8
Manufacture of motor vehicles, trailers and semi-trailers	C29	10.8	-14.6	-2.2	7.4	-5.4	8.8
Manufacture of other transport equipment	C30	-1.9	-4.1	-8.2	11.8	-8.9	9.4
Manufacture of furniture	C31	-0.6	-12.8	2.7	-1.2	11.2	-11.5
Other manufacturing	C32	9.0	-7.9	1.6	6.0	-5.6	2.6
Repair and installation of machinery and equipment	C33	0.6	25.3	-13.9	-6.7	12.8	-3.0
Electricity, gas, steam and air conditioning supply	D	-13.7	-2.2	11.0	-17.8	-6.3	8.8
Electricity, gas, steam and air conditioning supply	D35	-13.7	-2.2	11.0	-17.8	-6.3	8.8

¹ Seasonally adjusted.

* Preliminary data.

„..“ - Confidential data.

Table 2

Changes of Industrial Production Indices compared to the same month of the previous year¹

(Per cent)

Economic activities	NACE.BG - 2008	2022	2023				
		XII	I	II	III	IV	V*
Industry	B_TO_E36	2.6	-3.4	-2.7	-9.3	-12.7	-11.0
Mining and quarrying	B	2.6	-18.2	-10.4	-14.7	-10.4	-24.0
Mining of coal and lignite	B05	-9.2	-26.4	-30.1	-50.8	-53.9	-68.7
Extraction of crude petroleum and natural gas	B06
Mining of metal ores	B07	13.6	-15.6	8.8	19.4	28.1	4.0
Other mining and quarrying	B08	-8.2	11.5	-9.1	-8.5	-16.3	4.3
Mining support service activities	B09
Manufacturing	C	10.0	4.7	0.8	-1.4	-8.4	-8.3
Manufacture of food products	C10	5.4	-0.4	-7.7	-14.3	-10.3	-9.9
Manufacture of beverages	C11	11.1	9.7	1.3	9.6	-6.2	-5.1
Manufacture of tobacco products	C12	5.9	25.9	47.1	-10.2	-30.6	-36.7
Manufacture of textiles	C13	-17.0	-21.1	-25.0	-25.0	-31.3	-28.7
Manufacture of wearing apparel	C14	2.7	-6.0	6.0	-2.6	-14.2	-11.2
Manufacture of leather and related products	C15	-14.8	-22.6	-23.1	7.7	-15.0	-4.3
Manufacture of wood and of products of wood and cork, except furniture; manufacture of articles of straw and plaiting materials	C16	-6.3	-20.0	-18.3	-25.4	-31.0	-28.4
Manufacture of paper and paper products	C17	-7.5	1.8	-4.9	-7.5	-14.9	-17.5
Printing and reproduction of recorded media	C18	-11.6	-13.1	-6.8	-7.3	-13.9	-15.3
Manufacture of coke and refined petroleum products	C19
Manufacture of chemicals and chemical products	C20	0.3	-20.9	-22.5	-19.4	-12.2	-25.0
Manufacture of basic pharmaceutical products and pharmaceutical preparations	C21	25.5	-0.1	14.0	-2.9	-4.5	-3.0
Manufacture of rubber and plastic products	C22	-8.5	-12.7	-11.2	-12.2	-12.0	-10.7
Manufacture of other non-metallic mineral products	C23	9.1	11.1	-2.6	-4.2	-17.1	-20.3
Manufacture of basic metals	C24	9.8	-5.3	-17.8	-14.3	-21.8	-14.7
Manufacture of fabricated metal products, except machinery and equipment	C25	24.8	57.6	36.2	44.6	-6.4	16.3
Manufacture of computer, electronic and optical products	C26	15.4	5.7	11.1	7.0	-5.3	-9.0
Manufacture of electrical equipment	C27	20.2	11.2	9.1	4.7	3.7	-2.4
Manufacture of machinery and equipment n.e.c.	C28	-2.4	-5.8	-3.6	-6.5	-9.4	-8.9
Manufacture of motor vehicles, trailers and semi-trailers	C29	24.6	14.7	2.5	8.1	13.4	22.2
Manufacture of other transport equipment	C30	28.6	49.8	11.5	49.1	18.0	22.2
Manufacture of furniture	C31	-3.5	-28.8	-23.8	-25.4	-8.3	-25.7
Other manufacturing	C32	13.6	19.4	19.1	6.9	-1.3	-1.4
Repair and installation of machinery and equipment	C33	-0.3	33.1	8.0	-13.8	14.2	-13.2
Electricity, gas, steam and air conditioning supply	D	-23.7	-27.3	-12.0	-39.3	-38.3	-26.1
Electricity, gas, steam and air conditioning supply	D35	-23.7	-27.3	-12.0	-39.3	-38.3	-26.1

¹ Calendar-adjusted.

* Preliminary data.

„..“ - Confidential data.



Table 3

Industrial Production Indices
(Seasonally adjusted, 2015 = 100)

NACE.BG - 2008	2022								2023				
	V	VI	VII	VIII	IX	X	XI	XII	I	II	III	IV	V*
B_TO_E36	127.9	126.7	127.6	127.9	125.3	122.3	123.0	122.7	119.6	118.8	116.2	112.9	114.7
B	133.3	118.6	126.6	116.9	119.8	111.9	117.9	124.6	111.3	115.4	117.2	106.9	101.9
B05	130.8	113.7	121.7	102.8	109.2	90.9	109.2	101.3	92.4	91.8	77.4	65.6	54.2
B06
B07	130.9	123.8	119.4	121.0	124.1	118.7	122.9	153.8	108.1	128.7	155.1	132.3	136.1
B08	139.9	141.2	141.1	142.6	147.8	145.3	142.1	136.3	162.8	135.8	138.3	124.7	145.1
B09
C	135.4	133.1	131.0	132.5	134.5	135.0	132.2	135.9	132.9	128.6	129.4	125.0	125.8
C10	129.3	121.8	117.6	129.1	117.7	117.7	111.4	122.3	121.6	111.3	111.0	115.6	116.4
C11	105.2	108.0	102.4	106.5	105.6	110.9	110.6	112.3	112.3	103.4	111.1	103.4	102.0
C12	41.7	44.9	38.6	43.6	38.6	43.1	29.6	34.2	41.6	41.5	35.0	30.5	29.3
C13	110.6	110.1	108.1	116.3	109.8	101.1	106.4	106.3	97.9	89.9	89.1	83.0	81.1
C14	86.3	82.4	80.3	77.5	82.2	83.7	79.3	80.1	77.3	82.2	82.4	76.2	77.0
C15	70.5	69.2	66.7	65.4	67.0	66.7	64.5	64.5	62.3	60.7	71.7	63.6	64.9
C16	106.8	89.8	93.7	85.8	84.7	87.7	91.2	83.9	79.2	79.6	80.4	73.7	76.7
C17	111.2	108.2	111.1	106.9	101.0	112.6	111.6	103.7	107.6	100.7	99.8	92.6	92.5
C18	119.6	109.9	112.9	109.9	109.3	112.3	105.5	106.4	105.3	104.4	108.3	102.8	102.1
C19
C20	135.7	123.3	121.4	112.6	116.0	110.2	132.1	141.9	122.5	115.0	116.8	116.6	102.7
C21	125.2	137.9	126.3	118.8	125.0	129.1	117.8	145.8	126.8	130.6	119.1	124.2	122.3
C22	147.3	142.7	140.8	134.1	136.2	135.2	124.5	133.6	133.4	131.7	130.0	129.9	131.1
C23	134.7	129.7	128.1	133.3	135.0	133.0	127.2	129.1	142.2	130.8	126.0	111.5	109.4
C24	122.3	120.7	118.6	120.3	118.0	118.6	111.3	115.1	109.7	99.7	101.4	97.9	102.5
C25	155.9	150.5	139.6	152.6	155.3	161.3	178.2	150.3	195.9	163.2	179.1	168.7	180.7
C26	296.6	286.1	310.8	277.0	338.9	308.5	237.3	247.4	272.7	269.9	272.0	273.1	271.3
C27	167.1	166.2	165.4	164.5	168.4	166.6	170.5	179.6	172.2	169.8	167.9	170.5	165.2
C28	136.4	131.1	135.1	134.7	129.6	133.6	125.4	121.5	123.4	124.6	123.9	120.8	124.1
C29	141.9	160.5	143.0	159.0	163.4	160.1	167.9	186.0	158.9	155.4	166.9	157.9	171.8
C30	266.1	293.8	335.2	311.4	330.4	363.1	338.5	332.1	318.6	292.6	327.2	298.1	326.2
C31	115.5	110.5	108.3	98.5	105.7	105.9	100.4	99.9	87.1	89.4	88.3	98.3	87.0
C32	222.8	248.9	203.7	201.3	207.8	206.8	210.2	229.1	211.1	214.6	227.4	214.6	220.2
C33	151.1	120.8	124.6	137.2	131.7	121.3	118.2	118.9	149.0	128.3	119.6	135.0	131.0
D	97.8	111.2	125.1	126.0	92.7	67.5	91.9	79.3	77.5	86.1	70.8	66.3	72.1
35	97.8	111.2	125.1	126.0	92.7	67.5	91.9	79.3	77.5	86.1	70.8	66.3	72.1

* Preliminary data.

„..“ - Confidential data.



Table 4

Industrial Production Indices
(Calendar-adjusted, 2015 = 100)

NACE.BG - 2008	2020	2021	2022								2023				
	V	V	V	VI	VII	VIII	IX	X	XI	XII	I	II	III	IV	V*
B_TO_E36	88.0	103.4	123.4	129.9	132.7	124.4	125.6	125.7	128.9	123.7	112.9	112.3	121.2	107.9	109.8
B	95.0	105.5	125.5	114.6	123.0	114.3	125.2	123.5	126.8	137.0	107.5	110.5	115.1	97.6	95.3
B05	45.2	61.0	113.5	94.7	114.7	98.7	114.8	110.8	123.2	117.2	106.0	94.3	71.1	46.7	35.6
B06
B07	135.5	120.6	130.9	123.8	119.4	121.0	124.1	118.7	122.9	153.8	108.1	128.7	155.1	132.3	136.1
B08	90.3	152.6	142.5	151.4	149.6	149.9	161.2	160.5	159.6	136.4	117.7	106.0	132.8	118.3	148.6
B09
C	95.4	114.2	137.2	141.3	136.4	125.4	135.3	142.1	136.6	130.2	120.5	118.3	132.8	124.1	125.8
C10	101.9	113.1	129.0	125.2	118.2	131.1	122.7	128.1	115.7	126.5	109.1	97.2	111.2	110.7	116.2
C11	98.2	100.6	111.2	131.0	127.3	134.5	116.0	104.4	99.6	103.8	79.5	72.5	104.1	97.5	105.5
C12	36.1	46.6	50.4	61.8	49.8	43.5	41.3	47.1	26.3	28.5	26.0	29.0	32.1	31.8	31.9
C13	107.2	114.7	119.0	119.7	109.6	95.1	107.1	107.0	110.1	95.9	90.1	89.7	95.8	82.1	84.9
C14	76.7	61.4	81.0	86.5	91.5	74.0	80.3	85.0	79.2	76.5	81.0	82.9	83.4	69.6	71.9
C15	69.6	61.9	63.0	72.1	74.5	52.4	66.6	71.7	67.7	59.6	64.7	59.4	78.5	59.6	60.3
C16	61.9	91.3	112.0	94.9	101.0	84.5	88.0	93.2	97.1	78.9	65.9	69.4	80.6	73.9	80.2
C17	89.7	95.0	112.5	112.3	114.2	105.3	99.0	116.9	113.4	97.3	104.8	95.8	104.3	89.9	92.8
C18	89.8	109.7	121.0	111.8	113.9	104.5	105.3	121.4	119.4	108.1	93.6	95.5	110.1	101.5	102.5
C19
C20	109.5	113.0	135.2	127.4	123.6	107.2	114.5	110.5	135.5	141.0	115.0	109.2	127.9	117.8	101.4
C21	117.4	115.5	123.0	148.2	126.3	104.3	118.2	131.7	125.6	163.3	120.6	115.7	122.3	123.7	119.2
C22	119.4	145.3	146.0	149.2	148.2	128.3	138.1	148.2	123.8	117.7	124.7	127.3	137.1	127.1	130.4
C23	94.9	129.5	145.6	139.8	138.9	140.9	145.2	148.4	137.4	112.5	102.8	107.4	123.6	112.3	116.0
C24	107.3	106.6	125.1	119.1	116.0	109.3	109.1	125.3	107.0	117.7	114.5	96.5	109.3	94.5	106.7
C25	102.7	127.7	152.5	160.3	148.7	147.3	158.9	166.5	196.4	159.7	151.2	145.9	180.7	169.9	177.4
C26	136.9	204.8	289.7	298.2	321.0	242.8	341.4	352.8	252.8	239.8	258.0	248.9	278.6	268.1	263.6
C27	104.4	147.1	162.0	175.3	169.5	147.2	173.8	178.7	183.2	160.7	162.9	166.4	174.8	171.0	158.0
C28	75.3	108.6	133.8	140.5	142.5	118.6	129.1	142.9	133.0	113.6	112.8	119.7	130.2	123.7	121.9
C29	58.1	112.4	136.9	168.9	134.8	138.9	162.4	167.8	184.3	172.6	159.2	158.7	181.8	153.2	167.3
C30	165.6	188.8	259.6	325.8	348.0	241.2	304.9	384.5	361.3	280.0	279.2	290.6	356.6	301.0	317.1
C31	82.0	100.4	113.3	116.1	114.3	93.8	109.3	116.9	108.4	97.0	76.2	82.4	88.6	95.5	84.3
C32	79.4	111.4	218.1	285.5	205.1	199.3	220.1	222.0	226.9	207.7	183.6	189.9	232.0	208.7	215.0
C33	83.9	103.7	143.3	123.6	127.5	133.7	138.3	124.8	129.2	155.8	109.4	110.7	121.6	121.5	124.3
D	57.2	62.8	71.5	93.2	124.4	124.4	88.0	66.6	103.3	95.5	88.5	93.3	81.2	53.0	52.8
D35	57.2	62.8	71.5	93.2	124.4	124.4	88.0	66.6	103.3	95.5	88.5	93.3	81.2	53.0	52.8

* Preliminary data.

„..“ - Confidential data.