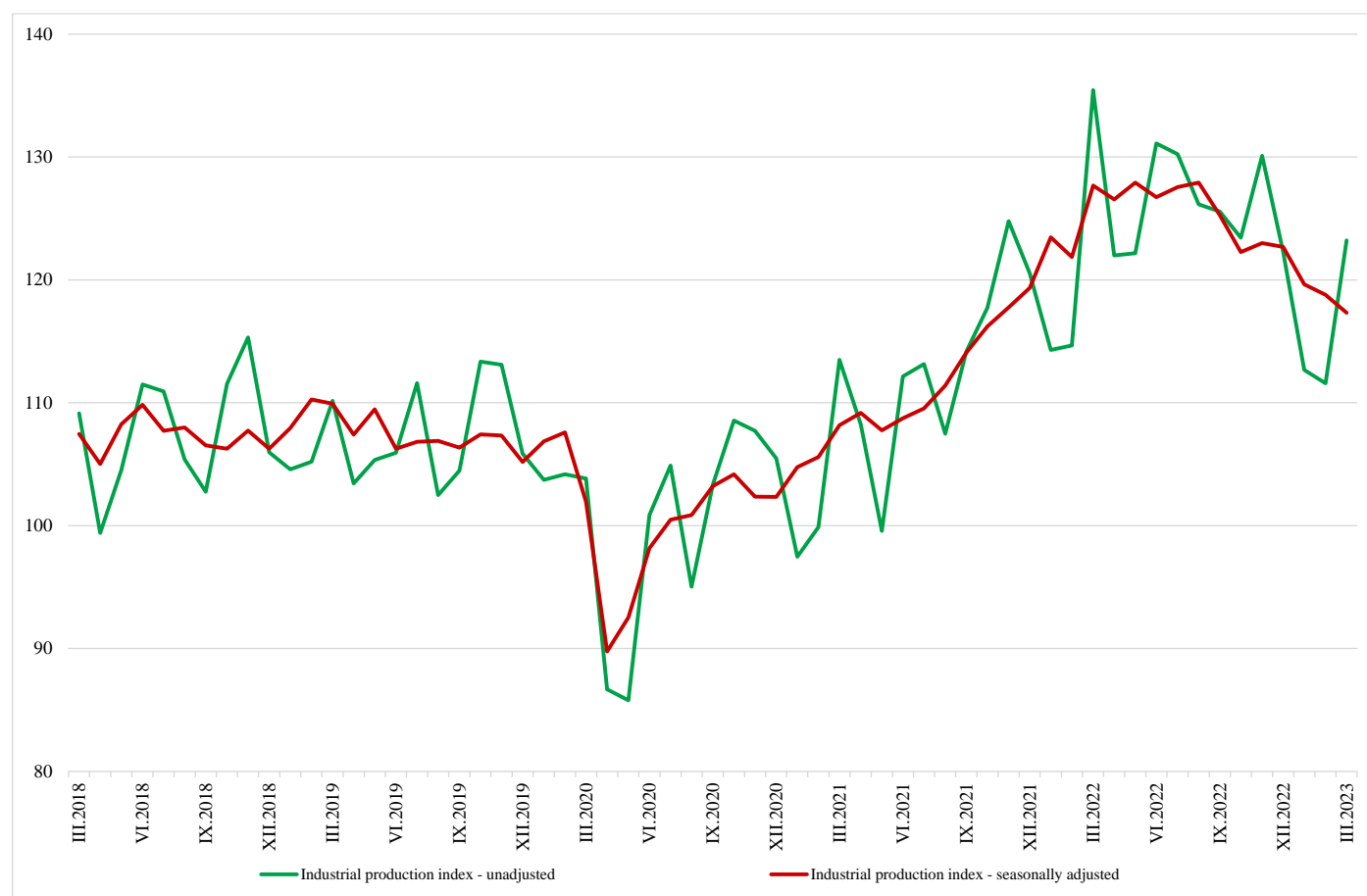


INDUSTRIAL PRODUCTION INDICES IN MARCH 2023¹

The Industrial Production Index² decreased by 1.2% in March 2023 compared to February 2023. The data are preliminary and seasonally adjusted³.

In March 2023, a decline of 9.0% was registered in the calendar-adjusted Industrial Production Index in comparison with the same month in 2022.

Figure 1. Industrial Production Indices (2015 = 100)



¹ March 2023 data is preliminary. The final data on Industrial Production and Turnover Indices for February 2023 can be found on the NSI website: <http://www.nsi.bg/en>.

² The Monthly Industrial Production and Industrial Turnover Indices measure changes in production and turnover values of industrial enterprises. This information can be used to assess the current economic development and for short-term forecasts. Indices do not measure the actual production level; they aim to measure the average change in the value of production between two points in time. Indices are compiled based on information collected through a representative sampling survey on industrial enterprises. The sample covers enterprises with an annual turnover of more than 97% of the total turnover in the industry. Industrial Production Indices are calculated at a constant base year that is to say they are weighted with the structure of the value added at factor costs in the base year.

³ Seasonal adjustment is a statistical method, which eliminates the seasonal component of the time series.

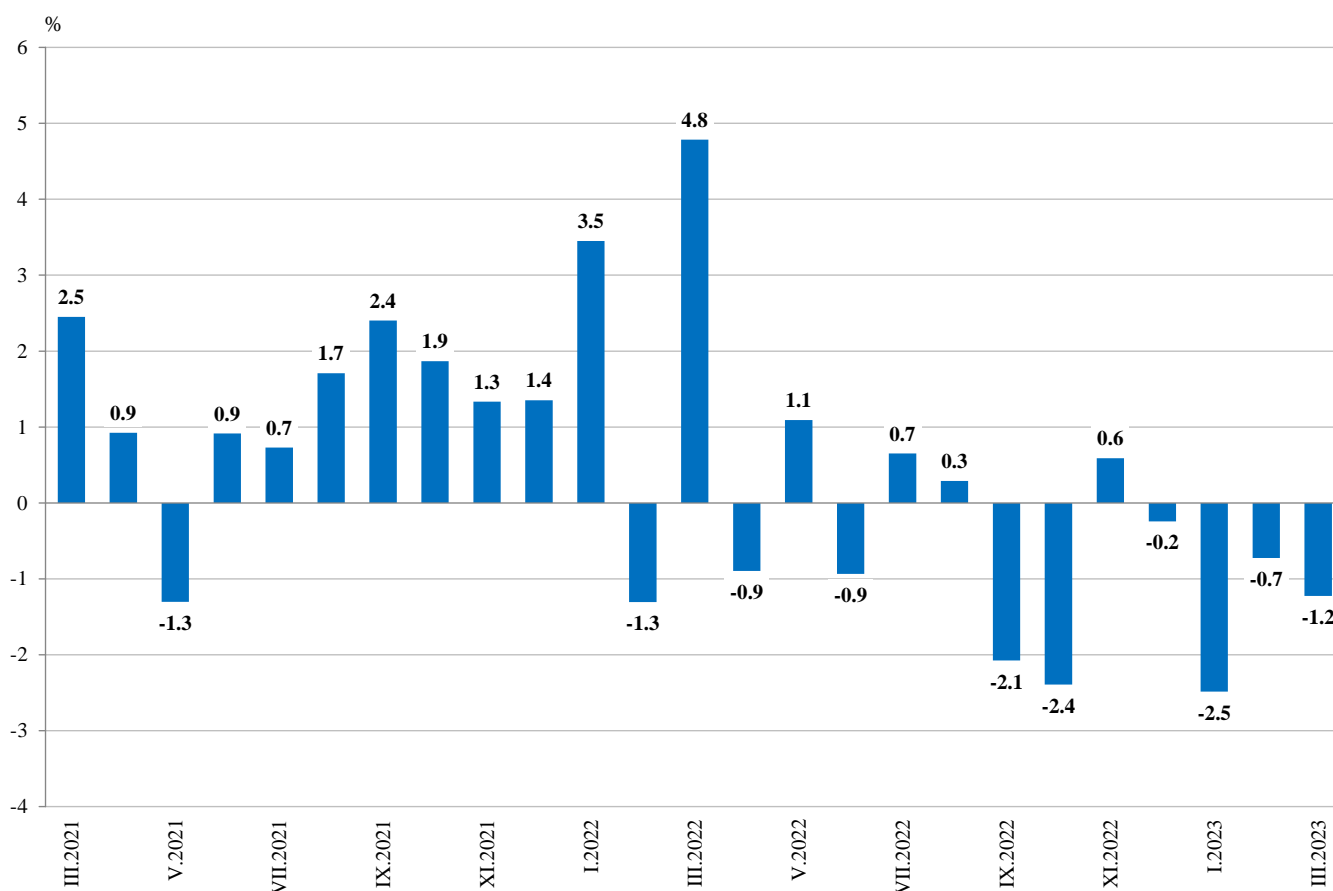
Monthly changes

Compared to the previous month, a drop was reported in the electricity, gas, steam and air conditioning supply - by 11.8%, while an increase was seen in the mining and quarrying industry - by 2.8%, and in the manufacturing - by 1.5%.

A major growth was observed in the the manufacture of leather and related products - by 19.3%, in the manufacture of other transport equipment - by 12.5%, in the manufacture of fabricated metal products, except machinery and equipment - by 9.1%, in the manufacture of beverages - by 8.2%, and in the manufacture of motor vehicles, trailers and semi-trailers - by 7.6%.

A drop was registered in the manufacture of tobacco products - by 18.6%, in the manufacture of basic pharmaceutical products and pharmaceutical preparations - by 10.3%, in the repair and installation of machinery and equipment - by 6.3%.

Figure 2. Changes of Industrial Production Indices compared to the previous month (Seasonally adjusted)



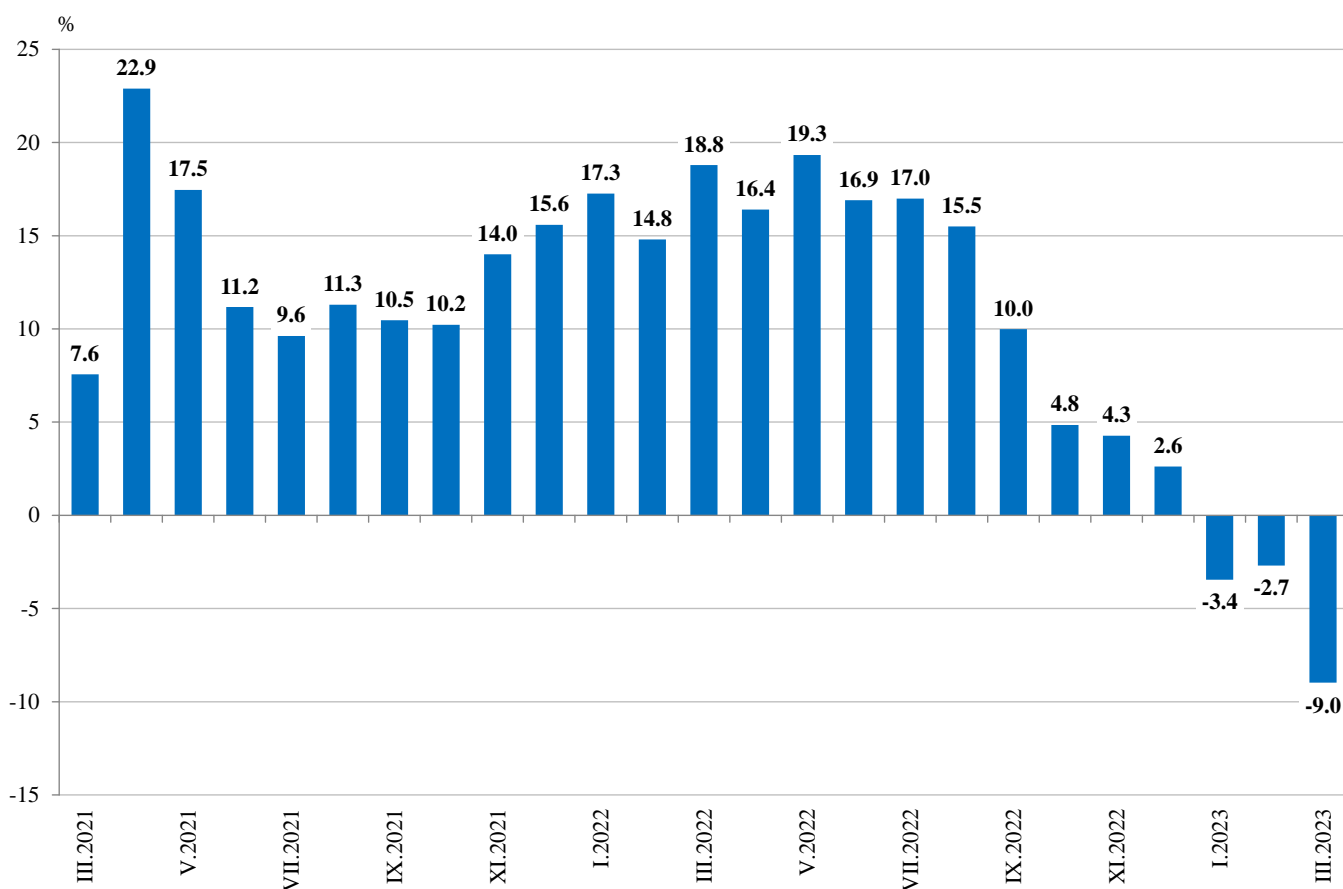
Annual changes

Compared to February 2022, a drop was reported in the electricity, gas, steam and air conditioning supply - by 39.3%, in the mining and quarrying industry - by 14.3%, and in the manufacturing - by 0.9%.

A decline was observed in the manufacture of furniture - by 25.2%, in the manufacture of wood and of products of wood and cork, except furniture - by 24.7%, in the manufacture of textiles - by 24.2%, and in the manufacture of chemicals and chemical products - by 18.3%.

The most significant growth was seen in the manufacture of other transport equipment - by 48.5%, in the manufacture of fabricated metal products, except machinery and equipment - by 43.3%, in the manufacture of computer, electronic and optical products - by 10.9%, in the manufacture of beverages - by 9.7%, and in the manufacture of leather and related products - by 9.5%.

Figure 3. Changes of Industrial Production Indices compared to the same month of the previous year (Calendar-adjusted)





Annex

Table 1

Changes of Industrial Production Indices compared to the previous month¹

(Per cent)

Economic activities	NACE.BG - 2008	2022			2023		
		X	XI	XII	I	II	III*
Industry	B_TO_E36	-2.4	0.6	-0.2	-2.5	-0.7	-1.2
Mining and quarrying	B	-6.6	5.4	5.6	-10.6	3.7	2.8
Mining of coal and lignite	B05	-16.8	20.2	-7.3	-8.8	-0.6	-15.6
Extraction of crude petroleum and natural gas	B06
Mining of metal ores	B07	-4.3	3.5	25.1	-29.7	19.1	20.5
Other mining and quarrying	B08	-1.7	-2.2	-4.1	19.5	-16.6	3.2
Mining support service activities	B09
Manufacturing	C	0.4	-2.1	2.7	-2.2	-3.2	1.5
Manufacture of food products	C10	-0.1	-5.3	9.8	-0.6	-8.5	0.4
Manufacture of beverages	C11	5.1	-0.2	1.5	0.0	-7.9	8.2
Manufacture of tobacco products	C12	11.5	-31.2	15.3	21.8	-0.3	-18.6
Manufacture of textiles	C13	-7.9	5.2	0.0	-7.9	-8.2	0.3
Manufacture of wearing apparel	C14	1.8	-5.2	1.0	-3.5	6.4	0.5
Manufacture of leather and related products	C15	-0.4	-3.3	-0.1	-3.4	-2.5	19.3
Manufacture of wood and of products of wood and cork, except furniture; manufacture of articles of straw and plaiting materials	C16	3.4	4.1	-8.0	-5.6	0.5	2.9
Manufacture of paper and paper products	C17	11.5	-0.9	-7.1	3.8	-6.4	-0.5
Printing and reproduction of recorded media	C18	2.8	-6.1	0.9	-1.1	-0.8	4.0
Manufacture of coke and refined petroleum products	C19
Manufacture of chemicals and chemical products	C20	-5.0	19.9	7.4	-13.7	-6.1	3.0
Manufacture of basic pharmaceutical products and pharmaceutical preparations	C21	3.3	-8.8	23.8	-13.0	3.0	-10.3
Manufacture of rubber and plastic products	C22	-0.7	-8.0	7.3	-0.1	-1.3	-1.0
Manufacture of other non-metallic mineral products	C23	-1.5	-4.3	1.4	10.2	-8.0	-2.3
Manufacture of basic metals	C24	0.5	-6.2	3.5	-4.7	-9.1	2.8
Manufacture of fabricated metal products, except machinery and equipment	C25	3.9	10.5	-15.6	30.3	-16.7	9.1
Manufacture of computer, electronic and optical products	C26	-9.0	-23.1	4.3	10.2	-1.0	3.9
Manufacture of electrical equipment	C27	-1.1	2.3	5.3	-4.1	-1.4	-0.6
Manufacture of machinery and equipment n.e.c.	C28	3.0	-6.1	-3.1	1.6	1.0	-0.3
Manufacture of motor vehicles, trailers and semi-trailers	C29	-2.0	4.8	10.8	-14.6	-2.2	7.6
Manufacture of other transport equipment	C30	9.9	-6.8	-1.9	-4.1	-8.2	12.5
Manufacture of furniture	C31	0.2	-5.1	-0.6	-12.8	2.7	-1.9
Other manufacturing	C32	-0.5	1.7	9.0	-7.9	1.6	5.0
Repair and installation of machinery and equipment	C33	-7.9	-2.5	0.6	25.3	-13.9	-6.3
Electricity, gas, steam and air conditioning supply	D	-27.2	36.1	-13.7	-2.2	11.0	-11.8
Electricity, gas, steam and air conditioning supply	D35	-26.4	-27.2	36.1	-13.7	-2.2	18.4

¹ Seasonally adjusted.

* Preliminary data.

„..“ - Confidential data.



Table 2

Changes of Industrial Production Indices compared to the same month of the previous year¹

(Per cent)

Economic activities	NACE.BG - 2008	2022			2023		
		X	XI	XII	I	II	III*
Industry	B_TO_E36	4.8	4.3	2.6	-3.4	-2.7	-9.0
Mining and quarrying	B	-3.0	-5.5	2.6	-18.2	-10.4	-14.3
Mining of coal and lignite	B05	-18.5	-4.5	-9.2	-26.4	-30.1	-51.0
Extraction of crude petroleum and natural gas	B06
Mining of metal ores	B07	9.0	-8.7	13.6	-15.6	8.8	19.4
Other mining and quarrying	B08	7.0	-0.1	-8.2	11.5	-9.1	-8.2
Mining support service activities	B09
Manufacturing	C	13.7	7.9	10.0	4.7	0.8	-0.9
Manufacture of food products	C10	1.7	-5.3	5.4	-0.4	-7.7	-13.5
Manufacture of beverages	C11	15.8	9.2	11.1	9.7	1.3	9.7
Manufacture of tobacco products	C12	33.7	-31.6	5.9	25.9	47.1	-11.9
Manufacture of textiles	C13	-21.3	-7.2	-17.0	-21.1	-25.0	-24.2
Manufacture of wearing apparel	C14	14.2	3.5	2.7	-6.0	6.0	-2.4
Manufacture of leather and related products	C15	-5.6	-16.4	-14.8	-22.6	-23.1	9.6
Manufacture of wood and of products of wood and cork, except furniture; manufacture of articles of straw and plaiting materials	C16	10.0	15.3	-6.3	-20.0	-18.3	-24.7
Manufacture of paper and paper products	C17	6.4	7.4	-7.5	1.8	-4.9	-7.5
Printing and reproduction of recorded media	C18	-7.1	-16.1	-11.6	-13.1	-6.8	-7.2
Manufacture of coke and refined petroleum products	C19
Manufacture of chemicals and chemical products	C20	-16.8	-1.9	0.3	-20.9	-22.5	-18.3
Manufacture of basic pharmaceutical products and pharmaceutical preparations	C21	4.6	-8.4	25.5	-0.1	14.0	-2.5
Manufacture of rubber and plastic products	C22	-4.6	-14.4	-8.5	-12.7	-11.2	-12.3
Manufacture of other non-metallic mineral products	C23	9.0	-1.0	9.1	11.1	-2.6	-3.5
Manufacture of basic metals	C24	15.1	-5.1	9.8	-5.3	-17.8	-14.3
Manufacture of fabricated metal products, except machinery and equipment	C25	38.9	54.5	24.8	57.6	36.2	43.3
Manufacture of computer, electronic and optical products	C26	13.4	-16.0	15.4	5.7	11.1	10.9
Manufacture of electrical equipment	C27	13.4	14.9	20.2	11.2	9.1	4.9
Manufacture of machinery and equipment n.e.c.	C28	11.2	2.0	-2.4	-5.8	-3.6	-6.6
Manufacture of motor vehicles, trailers and semi-trailers	C29	53.8	37.1	24.6	14.7	2.5	7.9
Manufacture of other transport equipment	C30	70.4	56.6	28.6	49.8	11.5	48.5
Manufacture of furniture	C31	-2.6	-7.1	-3.5	-28.8	-23.8	-25.2
Other manufacturing	C32	55.8	17.7	13.6	19.4	19.1	5.7
Repair and installation of machinery and equipment	C33	3.7	23.2	-0.3	33.1	8.0	-13.0
Electricity, gas, steam and air conditioning supply	D	-33.0	-7.2	-23.7	-27.3	-12.0	-39.3
Electricity, gas, steam and air conditioning supply	D35	-33.0	-7.2	-23.7	-27.3	-12.0	-39.3

¹ Calendar-adjusted.

* Preliminary data.

,,,“ - Confidential data.



Table 3

Industrial Production Indices
(Seasonally adjusted, 2015 = 100)

NACE.BG 2008	2022										2023		
	III	IV	V	VI	VII	VIII	IX	X	XI	XII	I	II	III*
B_TO_E36	127.7	126.5	127.9	126.7	127.6	127.9	125.3	122.3	123.0	122.7	119.6	118.8	117.3
B	138.5	118.7	133.3	118.6	126.6	116.9	119.8	111.9	117.9	124.6	111.3	115.4	118.7
B05	150.3	119.4	130.8	113.7	121.7	102.8	109.2	90.9	109.2	101.3	92.4	91.8	77.5
B06
B07	129.8	103.3	130.9	123.8	119.4	121.0	124.1	118.7	122.9	153.8	108.1	128.7	155.1
B08	151.6	144.6	139.9	141.2	141.1	142.6	147.8	145.3	142.1	136.3	162.8	135.8	140.1
B09
C	129.3	133.3	135.4	133.1	131.0	132.5	134.5	135.0	132.2	135.9	132.9	128.6	130.6
C10	128.2	128.7	129.3	121.8	117.6	129.1	117.7	117.7	111.4	122.3	121.6	111.3	111.8
C11	102.7	108.9	105.2	108.0	102.4	106.5	105.6	110.9	110.6	112.3	112.3	103.4	111.8
C12	36.7	40.1	41.7	44.9	38.6	43.6	38.6	43.1	29.6	34.2	41.6	41.5	33.8
C13	117.4	117.8	110.6	110.1	108.1	116.3	109.8	101.1	106.4	106.3	97.9	89.9	90.1
C14	86.1	88.0	86.3	82.4	80.3	77.5	82.2	83.7	79.3	80.1	77.3	82.2	82.7
C15	71.0	72.4	70.5	69.2	66.7	65.4	67.0	66.7	64.5	64.5	62.3	60.7	72.5
C16	108.2	105.4	106.8	89.8	93.7	85.8	84.7	87.7	91.2	83.9	79.2	79.6	82.0
C17	108.2	107.1	111.2	108.2	111.1	106.9	101.0	112.6	111.6	103.7	107.6	100.7	100.2
C18	117.5	118.6	119.6	109.9	112.9	109.9	109.3	112.3	105.5	106.4	105.3	104.4	108.6
C19
C20	144.6	132.4	135.7	123.3	121.4	112.6	116.0	110.2	132.1	141.9	122.5	115.0	118.4
C21	115.4	129.7	125.2	137.9	126.3	118.8	125.0	129.1	117.8	145.8	126.8	130.6	117.1
C22	147.7	147.2	147.3	142.7	140.8	134.1	136.2	135.2	124.5	133.6	133.4	131.7	130.4
C23	131.8	131.6	134.7	129.7	128.1	133.3	135.0	133.0	127.2	129.1	142.2	130.8	127.9
C24	118.5	119.1	122.3	120.7	118.6	120.3	118.0	118.6	111.3	115.1	109.7	99.7	102.5
C25	124.6	178.5	155.9	150.5	139.6	152.6	155.3	161.3	178.2	150.3	195.9	163.2	178.1
C26	253.3	287.8	296.6	286.1	310.8	277.0	338.9	308.5	237.3	247.4	272.7	269.9	280.3
C27	158.6	164.7	167.1	166.2	165.4	164.5	168.4	166.6	170.5	179.6	172.2	169.8	168.7
C28	132.7	132.1	136.4	131.1	135.1	134.7	129.6	133.6	125.4	121.5	123.4	124.6	124.2
C29	154.9	137.8	141.9	160.5	143.0	159.0	163.4	160.1	167.9	186.0	158.9	155.4	167.2
C30	219.6	241.8	266.1	293.8	335.2	311.4	330.4	363.1	338.5	332.1	318.6	292.6	329.1
C31	116.1	109.9	115.5	110.5	108.3	98.5	105.7	105.9	100.4	99.9	87.1	89.4	87.8
C32	213.5	216.3	222.8	248.9	203.7	201.3	207.8	206.8	210.2	229.1	211.1	214.6	225.4
C33	136.9	118.9	151.1	120.8	124.6	137.2	131.7	121.3	118.2	118.9	149.0	128.3	120.2
D	116.0	101.7	97.8	111.2	125.1	126.0	92.7	67.5	91.9	79.3	77.5	86.1	75.9
35	116.0	101.7	97.8	111.2	125.1	126.0	92.7	67.5	91.9	79.3	77.5	86.1	75.9

* Preliminary data.

„..“ - Confidential data.



Table 4

Industrial Production Indices
(Calendar-adjusted, 2015 = 100)

NACE.BG - 2008	2020	2021	2022										2023		
	III	III	III	IV	V	VI	VII	VIII	IX	X	XI	XII	I	II	III*
B_TO_E36	104.5	112.5	133.6	123.6	123.4	129.9	132.7	124.4	125.6	125.7	128.9	123.7	112.9	112.3	121.6
B	107.6	112.2	134.9	108.9	125.5	114.6	123.0	114.3	125.2	123.5	126.8	137.0	107.5	110.5	115.6
B05	73.6	79.5	144.4	101.2	113.5	94.7	114.7	98.7	114.8	110.8	123.2	117.2	106.0	94.3	70.8
B06
B07	139.0	131.0	129.8	103.3	130.9	123.8	119.4	121.0	124.1	118.7	122.9	153.8	108.1	128.7	155.1
B08	100.9	143.2	145.1	141.4	142.5	151.4	149.6	149.9	161.2	160.5	159.6	136.4	117.7	106.0	133.2
B09
C	108.8	119.4	134.7	135.5	137.2	141.3	136.4	125.4	135.3	142.1	136.6	130.2	120.5	118.3	133.5
C10	113.8	111.8	129.7	123.4	129.0	125.2	118.2	131.1	122.7	128.1	115.7	126.5	109.1	97.2	112.2
C11	89.3	86.6	95.0	104.0	111.2	131.0	127.3	134.5	116.0	104.4	99.6	103.8	79.5	72.5	104.2
C12	37.0	36.2	35.7	45.7	50.4	61.8	49.8	43.5	41.3	47.1	26.3	28.5	26.0	29.0	31.5
C13	98.9	115.3	127.7	119.4	119.0	119.7	109.6	95.1	107.1	107.0	110.1	95.9	90.1	89.7	96.8
C14	66.1	70.4	85.7	81.1	81.0	86.5	91.5	74.0	80.3	85.0	79.2	76.5	81.0	82.9	83.6
C15	65.4	75.1	72.9	70.0	63.0	72.1	74.5	52.4	66.6	71.7	67.7	59.6	64.7	59.4	79.9
C16	69.7	79.0	108.0	107.1	112.0	94.9	101.0	84.5	88.0	93.2	97.1	78.9	65.9	69.4	81.4
C17	101.5	104.1	112.7	105.7	112.5	112.3	114.2	105.3	99.0	116.9	113.4	97.3	104.8	95.8	104.2
C18	100.5	119.1	118.8	117.9	121.0	111.8	113.9	104.5	105.3	121.4	119.4	108.1	93.6	95.5	110.3
C19
C20	132.5	129.3	158.7	134.1	135.2	127.4	123.6	107.2	114.5	110.5	135.5	141.0	115.0	109.2	129.6
C21	135.5	139.5	125.9	129.6	123.0	148.2	126.3	104.3	118.2	131.7	125.6	163.3	120.6	115.7	122.7
C22	140.3	153.5	156.3	144.5	146.0	149.2	148.2	128.3	138.1	148.2	123.8	117.7	124.7	127.3	137.1
C23	104.4	112.4	129.1	135.4	145.6	139.8	138.9	140.9	145.2	148.4	137.4	112.5	102.8	107.4	124.5
C24	114.3	123.3	127.6	120.8	125.1	119.1	116.0	109.3	109.1	125.3	107.0	117.7	114.5	96.5	109.4
C25	120.0	123.4	125.0	181.5	152.5	160.3	148.7	147.3	158.9	166.5	196.4	159.7	151.2	145.9	179.1
C26	142.9	211.8	260.4	283.1	289.7	298.2	321.0	242.8	341.4	352.8	252.8	239.8	258.0	248.9	288.6
C27	126.8	156.5	167.0	165.0	162.0	175.3	169.5	147.2	173.8	178.7	183.2	160.7	162.9	166.4	175.3
C28	106.0	118.4	139.2	136.5	133.8	140.5	142.5	118.6	129.1	142.9	133.0	113.6	112.8	119.7	130.1
C29	129.6	159.9	168.2	135.1	136.9	168.9	134.8	138.9	162.4	167.8	184.3	172.6	159.2	158.7	181.5
C30	193.7	253.8	239.3	255.1	259.6	325.8	348.0	241.2	304.9	384.5	361.3	280.0	279.2	290.6	355.4
C31	81.1	107.4	118.7	104.2	113.3	116.1	114.3	93.8	109.3	116.9	108.4	97.0	76.2	82.4	88.8
C32	81.3	112.3	217.0	211.4	218.1	285.5	205.1	199.3	220.1	222.0	226.9	207.7	183.6	189.9	229.3
C33	138.7	116.0	141.1	106.5	143.3	123.6	127.5	133.7	138.3	124.8	129.2	155.8	109.4	110.7	122.7
D	89.0	87.4	133.7	85.8	71.5	93.2	124.4	124.4	88.0	66.6	103.3	95.5	88.5	93.3	81.2
D35	89.0	87.4	133.7	85.8	71.5	93.2	124.4	124.4	88.0	66.6	103.3	95.5	88.5	93.3	81.2

* Preliminary data.

„...“ - Confidential data.