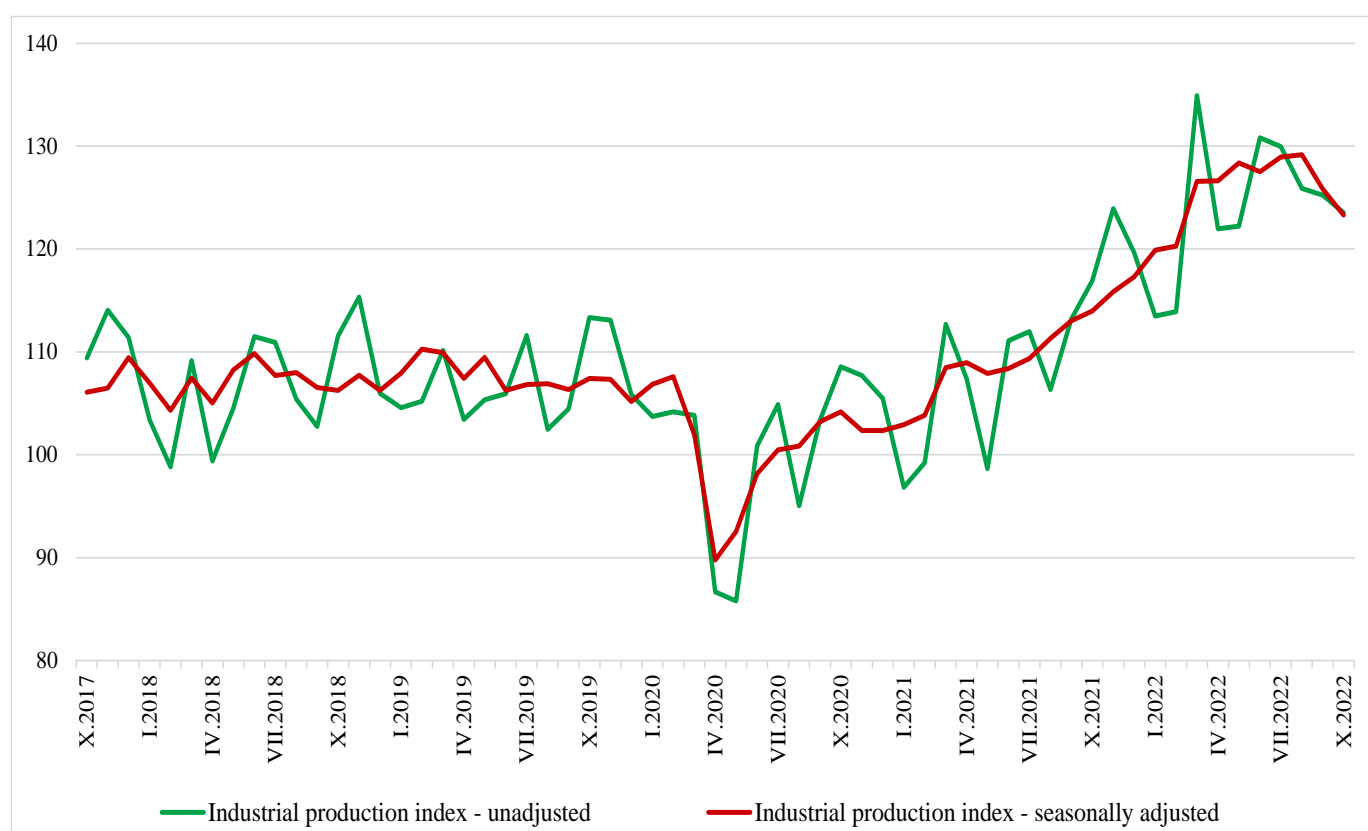


## INDUSTRIAL PRODUCTION INDICES IN OCTOBER 2022<sup>1</sup>

The Industrial Production Index<sup>2</sup> decreased by 2.0% in October 2022 compared to September 2022. The data are preliminary and seasonally adjusted<sup>3</sup>.

In October 2022 the calendar adjusted<sup>4</sup> Industrial Production Index rose by 5.7% in comparison with the same month of 2021.

**Figure 1. Industrial Production Indices (2015 = 100)**



<sup>1</sup> October 2022 data is preliminary. The final data on Industrial Production and Turnover Indices for September 2022 can be found on the NSI website: <http://www.nsi.bg/en>.

<sup>2</sup> The Monthly Industrial Production and Industrial Turnover Indices measure changes in production and turnover values of industrial enterprises. This information can be used to assess the current economic development and for short-term forecasts. Indices do not measure the actual production level; they aim to measure the average change in the value of production between two points in time. Indices are compiled based on information collected through a representative sampling survey on industrial enterprises. The sample covers enterprises with an annual turnover of more than 97% of the total turnover in the industry. Industrial production indices are calculated at constant base year that is to say they are weighted with the structure of the value added at factor costs in the base year.

<sup>3</sup> Seasonal adjustment is a statistical method, which eliminates the seasonal component of the time series.

<sup>4</sup> Calendar adjustment is an adjustment for variations caused by calendar effects, different number of calendar and working days in the months, national holidays and outliers (for example, the presence of more non-working days in May could contribute to the decline in production in some activities).

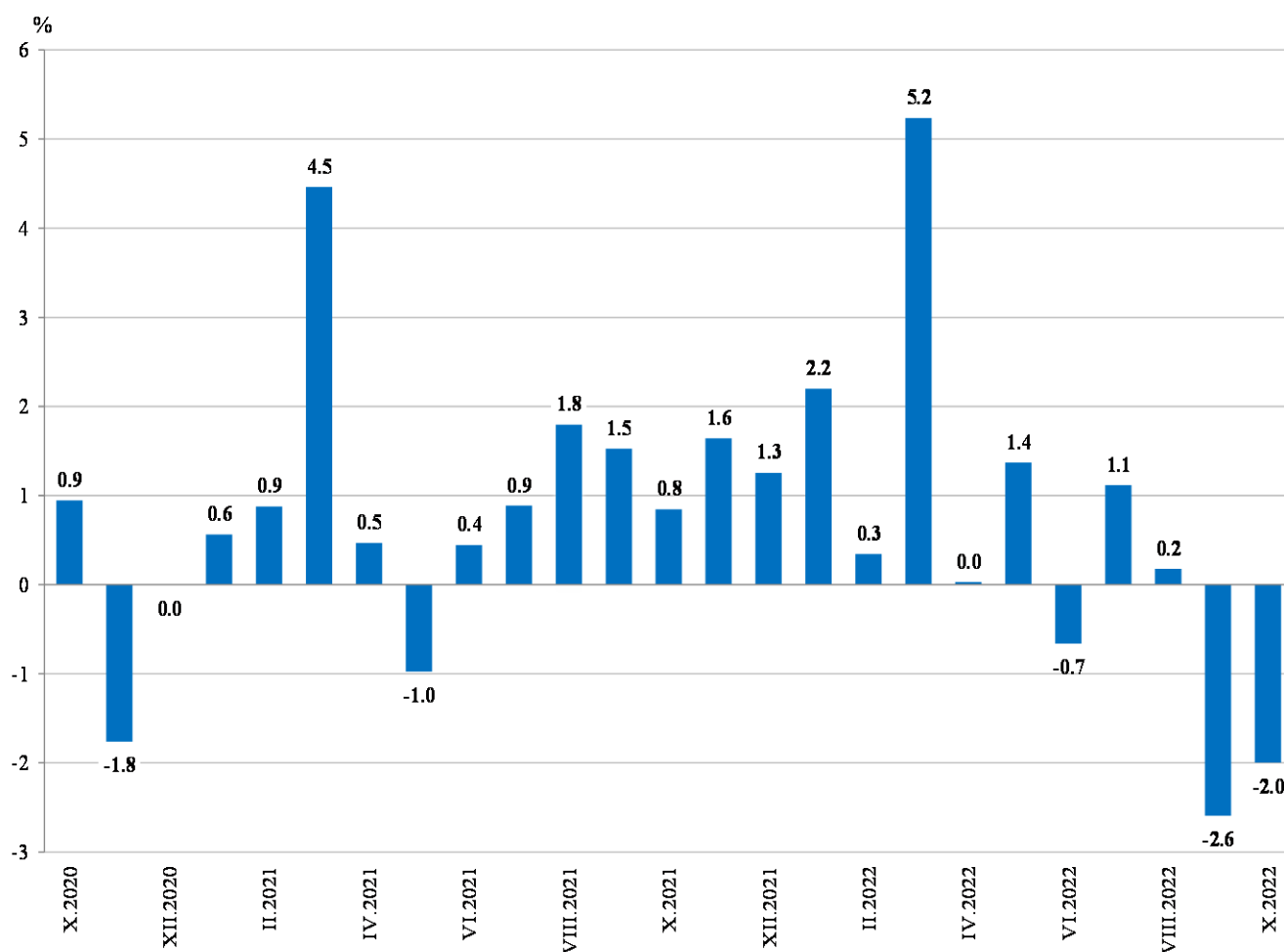
## Monthly changes

Compared to previous month decrease was reported in the electricity, gas, steam and air conditioning supply - by 24.5% and in the mining and quarrying industry - by 6.2%, while an increase was seen in the manufacturing - by 0.4%.

A major growth was observed in the manufacture of paper and paper products - by 11.9%, in the manufacture of other transport equipment - by 11.5%, in the manufacture of tobacco products - by 8.9% and in the in the manufacture of basic pharmaceutical products and pharmaceutical preparations - by 5.4%.

A decline was seen in the manufacture of computer, electronic and optical products - by 8.9%, in the repair and installation of machinery and equipment - by 8.0%, in the manufacture of textiles - by 7.9% and in the in the manufacture of chemicals and chemical products - by 5.1%.

**Figure 2. Changes of Industrial Production Indices compared to the previous month (Seasonally adjusted)**



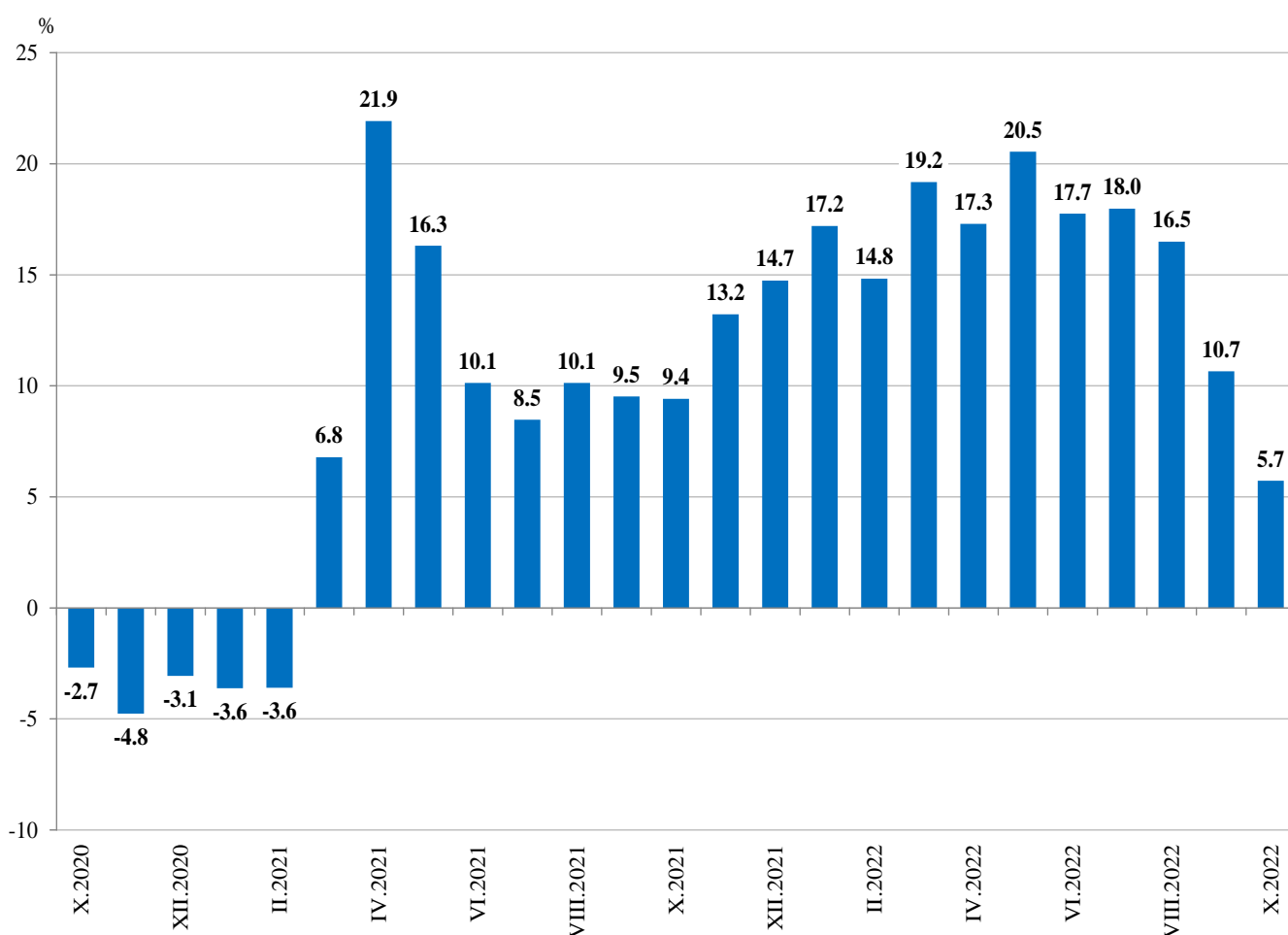
## Annual changes

A growth compared to October 2021 was registered in the manufacturing - by 14.2%, while a decline was observed in the electricity, gas, steam and air conditioning supply - by 30.0% and in the mining and quarrying industry - by 2.1%.

The most significant increase in the manufacturing compared to the same month of the previous year was seen in the manufacture of other transport equipment - by 70.0%, in the other manufacturing - by 56.1%, in the manufacture of motor vehicles, trailers and semi-trailers - by 51.1%, in the manufacture of beverages - by 46.5%, in the manufacture of fabricated metal products, except machinery and equipment - by 43.1%

Decrease was reported in the manufacture of textiles - by 21.8%, in the manufacture of chemicals and chemical products - by 16.5% and in the printing and reproduction of recorded media - by 8.1%.

**Figure 3. Changes of Industrial Production Indices compared to the same month of the previous year (Calendar adjusted)**





Annex

Table 1

Changes of Industrial Production Indices compared to the previous month<sup>1</sup>

(Percent)

Economic activities	NACE.BG - 2008	2022					
		V	VI	VII	VIII	IX	X*
<b>Industry</b>	<b>B_TO_E36</b>	<b>1.4</b>	<b>-0.7</b>	<b>1.1</b>	<b>0.2</b>	<b>-2.6</b>	<b>-2.0</b>
<b>Mining and quarrying</b>	<b>B</b>	<b>13.0</b>	<b>-9.9</b>	<b>6.0</b>	<b>-8.1</b>	<b>2.3</b>	<b>-6.2</b>
Mining of coal and lignite	B05	8.5	-12.1	7.4	-15.9	5.7	-16.8
Extraction of crude petroleum and natural gas	B06	..	..	..	..	..	..
Mining of metal ores	B07	26.6	-5.3	-3.2	1.1	2.5	-4.7
Other mining and quarrying	B08	-3.5	-0.5	-0.3	1.2	3.9	-1.5
Mining support service activities	B09	..	..	..	..	..	..
<b>Manufacturing</b>	<b>C</b>	<b>1.6</b>	<b>-2.2</b>	<b>-1.5</b>	<b>1.3</b>	<b>1.5</b>	<b>0.4</b>
Manufacture of food products	C10	1.8	-7.0	-2.9	9.5	-9.2	0.5
Manufacture of beverages	C11	-3.6	0.8	-6.1	2.6	-1.9	2.7
Manufacture of tobacco products	C12	3.3	11.8	-16.4	16.7	-12.6	8.9
Manufacture of textiles	C13	-6.1	1.9	-2.9	6.6	-6.1	-7.9
Manufacture of wearing apparel	C14	-1.4	-4.8	-3.2	-3.2	7.1	2.2
Manufacture of leather and related products	C15	-7.3	-2.1	-3.0	-1.9	5.2	-1.4
Manufacture of wood and of products of wood and cork, except furniture; manufacture of articles of straw and plaiting materials	C16	0.2	-15.8	4.2	-8.2	-1.7	3.7
Manufacture of paper and paper products	C17	4.3	-2.1	0.8	-4.5	-5.0	11.9
Printing and reproduction of recorded media	C18	-0.1	-8.2	2.6	-2.6	-0.6	2.1
Manufacture of coke and refined petroleum products	C19	..	..	..	..	..	..
Manufacture of chemicals and chemical products	C20	1.3	-9.1	-3.5	-6.1	2.9	-5.1
Manufacture of basic pharmaceutical products and pharmaceutical preparations	C21	-2.0	11.5	-8.5	-9.0	7.8	5.4
Manufacture of rubber and plastic products	C22	-0.1	-3.3	-1.8	-4.8	1.4	-0.7
Manufacture of other non-metallic mineral products	C23	2.5	-5.2	-0.7	4.1	0.0	-2.4
Manufacture of basic metals	C24	8.9	-4.0	-4.6	4.5	0.1	-2.3
Manufacture of fabricated metal products, except machinery and equipment	C25	-13.7	-4.2	-7.1	9.4	1.4	4.2
Manufacture of computer, electronic and optical products	C26	3.4	-2.8	8.5	-9.9	22.6	-8.9
Manufacture of electrical equipment	C27	1.5	-0.8	-0.5	-1.1	2.9	-1.4
Manufacture of machinery and equipment n.e.c.	C28	3.1	-3.6	3.9	-0.8	-3.9	2.8
Manufacture of motor vehicles, trailers and semi-trailers	C29	5.6	10.1	-11.0	11.3	2.8	-2.0
Manufacture of other transport equipment	C30	11.6	12.0	13.3	-9.1	8.9	11.5
Manufacture of furniture	C31	5.0	-4.0	-2.6	-8.4	7.5	0.5
Other manufacturing	C32	4.1	10.8	-18.8	-0.4	2.9	0.1
Repair and installation of machinery and equipment	C33	27.1	-20.9	3.7	9.1	-3.1	-8.0
<b>Electricity, gas, steam and air conditioning supply</b>	<b>D</b>	<b>-1.4</b>	<b>16.7</b>	<b>13.8</b>	<b>-6.4</b>	<b>-12.1</b>	<b>-24.5</b>
Electricity, gas, steam and air conditioning supply	D35	-1.4	16.7	13.8	-6.4	-12.1	-24.5

<sup>1</sup> Seasonally adjusted.

\* Preliminary data.

„..“ - Confidential data.



**Table 2**

**Changes of Industrial Production Indices compared to the same month of the previous year<sup>1</sup>**

(Percent)

Economic activities	NACE.BG - 2008	2022					
		V	VI	VII	VIII	IX	X*
<b>Industry</b>	<b>B_TO_E36</b>	<b>20.5</b>	<b>17.7</b>	<b>18.0</b>	<b>16.5</b>	<b>10.7</b>	<b>5.7</b>
<b>Mining and quarrying</b>	<b>B</b>	<b>18.6</b>	<b>2.3</b>	<b>19.8</b>	<b>-6.0</b>	<b>-2.4</b>	<b>-2.1</b>
Mining of coal and lignite	B05	86.0	43.1	73.8	5.0	-0.1	-18.6
Extraction of crude petroleum and natural gas	B06	..	..	..	..	..	..
Mining of metal ores	B07	8.3	-14.3	0.1	-13.7	-6.7	8.6
Other mining and quarrying	B08	-1.2	2.9	-0.5	8.9	5.9	11.9
Mining support service activities	B09	..	..	..	..	..	..
<b>Manufacturing</b>	<b>C</b>	<b>21.5</b>	<b>16.5</b>	<b>12.4</b>	<b>12.7</b>	<b>14.0</b>	<b>14.2</b>
Manufacture of food products	C10	15.4	10.0	2.2	17.1	4.0	2.3
Manufacture of beverages	C11	40.5	51.1	29.6	41.9	43.8	46.5
Manufacture of tobacco products	C12	8.0	2.7	-20.7	32.6	-7.5	33.7
Manufacture of textiles	C13	2.9	0.8	-2.7	-6.0	-9.9	-21.8
Manufacture of wearing apparel	C14	32.5	19.2	15.2	2.3	15.8	15.1
Manufacture of leather and related products	C15	-0.2	-0.7	-11.3	-8.5	-0.9	-5.9
Manufacture of wood and of products of wood and cork. except furniture; manufacture of articles of straw and plaiting materials	C16	22.7	10.1	11.5	-6.8	-6.8	9.8
Manufacture of paper and paper products	C17	18.3	6.9	6.6	-2.5	-9.7	6.2
Printing and reproduction of recorded media	C18	10.4	-7.0	-4.5	-12.8	-6.6	-8.1
Manufacture of coke and refined petroleum products	C19	..	..	..	..	..	..
Manufacture of chemicals and chemical products	C20	22.2	0.6	-3.4	-7.8	-3.5	-16.5
Manufacture of basic pharmaceutical products and pharmaceutical preparations	C21	7.0	29.9	7.7	-14.2	5.2	9.1
Manufacture of rubber and plastic products	C22	0.6	-4.4	0.3	-12.8	-4.5	-4.7
Manufacture of other non-metallic mineral products	C23	13.4	8.8	7.4	7.4	8.8	6.2
Manufacture of basic metals	C24	17.4	13.4	20.8	26.0	26.0	10.7
Manufacture of fabricated metal products. except machinery and equipment	C25	22.9	28.8	6.3	44.4	29.9	43.1
Manufacture of computer. electronic and optical products	C26	41.3	37.8	50.2	23.4	50.6	12.8
Manufacture of electrical equipment	C27	9.8	11.1	12.6	8.9	9.8	13.3
Manufacture of machinery and equipment n.e.c.	C28	23.8	8.6	18.2	14.9	11.2	10.7
Manufacture of motor vehicles. trailers and semi-trailers	C29	20.1	19.0	14.7	8.2	38.6	51.1
Manufacture of other transport equipment	C30	37.0	13.5	39.5	64.9	35.7	70.0
Manufacture of furniture	C31	12.3	4.3	1.2	-6.0	-2.0	-2.7
Other manufacturing	C32	96.2	99.7	42.9	33.5	21.4	56.1
Repair and installation of machinery and equipment	C33	35.9	10.5	20.1	23.5	6.3	1.7
<b>Electricity, gas, steam and air conditioning supply</b>	<b>D</b>	<b>14.1</b>	<b>39.3</b>	<b>52.0</b>	<b>51.1</b>	<b>1.6</b>	<b>-30.0</b>
Electricity, gas, steam and air conditioning supply	D35	14.1	39.3	52.0	51.1	1.6	-30.0

<sup>1</sup> Calendar adjusted.

\* Preliminary data.

„..“ - Confidential data.



Table 3

**Industrial Production Indices**  
(Seasonally adjusted, 2015 = 100)

NACE.BG - 2008	2021			2022									
	X	XI	XII	I	II	III	IV	V	VI	VII	VIII	IX	X*
<b>B_TO_E36</b>	<b>114.0</b>	<b>115.8</b>	<b>117.3</b>	<b>119.9</b>	<b>120.3</b>	<b>126.6</b>	<b>126.6</b>	<b>128.4</b>	<b>127.5</b>	<b>128.9</b>	<b>129.2</b>	<b>125.8</b>	<b>123.3</b>
<b>B</b>	<b>114.3</b>	<b>124.1</b>	<b>123.3</b>	<b>135.6</b>	<b>129.2</b>	<b>141.6</b>	<b>118.6</b>	<b>134.0</b>	<b>120.7</b>	<b>128.0</b>	<b>117.6</b>	<b>120.3</b>	<b>112.9</b>
<b>B05</b>	114.6	115.6	112.5	130.0	132.6	149.6	120.0	130.2	114.5	122.9	103.4	109.2	90.9
<b>B06</b>	..	..	..	..	..	..	..	..	..	..	..	..	..
<b>B07</b>	108.9	134.6	135.4	127.5	118.2	129.9	103.2	130.7	123.8	119.7	121.0	124.1	118.3
<b>B08</b>	135.6	141.8	146.4	158.5	153.5	161.9	153.1	147.8	147.0	146.6	148.5	154.2	151.9
<b>B09</b>	..	..	..	..	..	..	..	..	..	..	..	..	..
<b>C</b>	<b>117.0</b>	<b>118.3</b>	<b>121.0</b>	<b>125.0</b>	<b>125.4</b>	<b>128.3</b>	<b>133.7</b>	<b>135.8</b>	<b>132.8</b>	<b>130.8</b>	<b>132.6</b>	<b>134.6</b>	<b>135.2</b>
<b>C10</b>	114.6	115.2	115.9	122.8	123.5	128.2	128.9	131.2	121.9	118.4	129.6	117.8	118.4
<b>C11</b>	64.5	67.6	62.3	98.6	88.2	91.7	94.9	91.5	92.2	86.6	88.9	87.2	89.6
<b>C12</b>	32.2	34.1	26.9	36.3	31.3	35.8	40.1	41.5	46.4	38.8	45.3	39.5	43.1
<b>C13</b>	126.6	115.6	129.7	122.0	117.0	117.5	117.5	110.4	112.5	109.2	116.4	109.3	100.6
<b>C14</b>	73.7	75.7	77.4	79.5	78.3	84.2	88.3	87.1	82.9	80.3	77.7	83.2	85.1
<b>C15</b>	72.0	74.2	75.0	78.2	76.6	73.0	75.4	69.9	68.4	66.4	65.1	68.5	67.5
<b>C16</b>	79.0	79.2	88.5	95.4	96.6	108.5	107.0	107.3	90.3	94.1	86.4	84.9	88.0
<b>C17</b>	107.0	104.3	108.3	104.8	104.1	108.8	108.1	112.7	110.3	111.2	106.2	100.8	112.9
<b>C18</b>	122.2	124.8	120.3	121.2	112.2	118.2	120.7	120.6	110.8	113.6	110.7	110.0	112.2
<b>C19</b>	..	..	..	..	..	..	..	..	..	..	..	..	..
<b>C20</b>	130.0	135.6	140.9	154.8	147.9	145.1	134.8	136.6	124.1	119.7	112.4	115.7	109.7
<b>C21</b>	123.5	124.4	124.7	123.9	115.3	115.3	127.5	124.9	139.2	127.4	115.9	125.0	131.7
<b>C22</b>	141.3	139.6	146.2	154.2	149.2	149.3	149.5	149.4	144.6	141.9	135.2	137.0	136.0
<b>C23</b>	121.7	127.4	117.1	132.7	134.2	131.2	132.5	135.7	128.7	127.8	133.0	133.0	129.8
<b>C24</b>	105.3	105.3	111.4	114.3	116.8	117.1	116.0	126.4	121.3	115.7	120.9	121.0	118.3
<b>C25</b>	115.7	116.1	117.2	127.7	119.5	126.2	186.3	160.8	154.1	143.1	156.6	158.8	165.6
<b>C26</b>	278.7	268.7	205.4	254.7	239.4	250.8	287.1	296.9	288.5	312.9	282.0	345.8	314.9
<b>C27</b>	145.0	147.1	150.9	153.7	154.9	157.7	164.9	167.3	166.0	165.2	163.4	168.2	165.8
<b>C28</b>	120.8	121.3	121.7	129.1	128.8	132.0	132.5	136.6	131.7	136.8	135.7	130.5	134.2
<b>C29</b>	103.4	122.8	153.7	135.6	148.2	153.0	134.7	142.2	156.5	139.3	155.0	159.4	156.3
<b>C30</b>	227.2	219.6	257.3	206.9	240.8	210.3	229.5	256.1	286.9	325.1	295.6	322.1	358.9
<b>C31</b>	110.0	108.0	103.7	118.4	116.7	116.0	110.5	116.0	111.3	108.4	99.3	106.7	107.2
<b>C32</b>	132.7	176.2	201.3	179.4	185.4	213.6	217.0	226.0	250.4	203.3	202.6	208.5	208.7
<b>C33</b>	115.2	93.9	117.3	112.5	117.2	131.0	117.0	148.7	117.6	121.9	133.1	129.0	118.7
<b>D</b>	<b>105.9</b>	<b>102.8</b>	<b>98.7</b>	<b>94.6</b>	<b>96.5</b>	<b>119.9</b>	<b>96.0</b>	<b>94.7</b>	<b>110.6</b>	<b>125.8</b>	<b>117.8</b>	<b>103.6</b>	<b>78.2</b>
<b>35</b>	105.9	102.8	98.7	94.6	96.5	119.9	96.0	94.7	110.6	125.8	117.8	103.6	78.2

\* Preliminary data.

„..“ - Confidential data.



Table 4

**Industrial Production Indices**  
(Calendar adjusted, 2015 = 100)

NACE.BG - 2008	2019	2020	2021			2022									
	X	X	X	XI	XII	I	II	III	IV	V	VI	VII	VIII	IX	X*
<b>B_TO_E36</b>	<b>111.8</b>	<b>108.8</b>	<b>119.0</b>	<b>122.8</b>	<b>119.7</b>	<b>116.1</b>	<b>114.6</b>	<b>133.1</b>	<b>123.6</b>	<b>123.4</b>	<b>129.6</b>	<b>132.4</b>	<b>124.2</b>	<b>125.2</b>	<b>125.9</b>
<b>B</b>	<b>119.8</b>	<b>107.3</b>	<b>127.6</b>	<b>134.1</b>	<b>133.6</b>	<b>132.6</b>	<b>123.8</b>	<b>137.9</b>	<b>109.0</b>	<b>125.7</b>	<b>116.5</b>	<b>124.1</b>	<b>115.0</b>	<b>126.3</b>	<b>124.9</b>
<b>B05</b>	100.7	74.8	136.0	129.1	129.1	144.1	135.0	144.4	101.2	113.5	94.7	114.7	98.7	114.8	110.7
<b>B06</b>	..	..	..	..	..	..	..	..	..	..	..	..	..	..	..
<b>B07</b>	144.0	130.4	108.9	134.6	135.4	127.5	118.2	129.9	103.2	130.7	123.8	119.7	121.0	124.1	118.3
<b>B08</b>	121.5	120.3	150.0	159.7	148.5	110.8	120.4	154.3	149.8	150.8	157.7	155.7	156.0	167.9	167.9
<b>B09</b>	..	..	..	..	..	..	..	..	..	..	..	..	..	..	..
<b>C</b>	<b>122.1</b>	<b>120.2</b>	<b>123.9</b>	<b>125.4</b>	<b>117.1</b>	<b>115.1</b>	<b>117.4</b>	<b>133.8</b>	<b>135.3</b>	<b>137.1</b>	<b>140.8</b>	<b>135.9</b>	<b>125.0</b>	<b>134.8</b>	<b>141.5</b>
<b>C10</b>	125.3	116.9	125.9	122.2	120.0	109.9	109.1	129.0	122.7	130.5	125.0	118.2	131.3	122.5	128.7
<b>C11</b>	98.5	93.6	60.3	60.9	62.3	63.2	59.9	80.9	87.5	94.6	111.6	109.1	115.5	99.6	88.3
<b>C12</b>	57.0	36.4	35.2	38.5	26.9	20.6	18.9	35.7	45.7	50.4	61.8	49.8	43.5	41.3	47.1
<b>C13</b>	101.3	111.3	135.8	118.7	115.6	112.1	117.7	127.0	118.7	117.9	122.7	109.4	94.6	106.6	106.3
<b>C14</b>	83.0	72.8	74.5	76.5	74.3	86.5	78.6	86.0	81.8	81.3	86.9	91.8	74.0	80.7	85.8
<b>C15</b>	99.7	85.3	77.1	80.4	69.9	84.0	77.5	73.2	70.3	63.7	71.9	76.0	52.1	66.9	72.5
<b>C16</b>	86.2	81.0	84.7	84.2	84.2	81.0	84.5	107.6	107.1	112.1	94.6	100.9	84.6	87.8	93.0
<b>C17</b>	102.8	94.8	110.0	105.5	105.1	103.7	101.2	112.6	106.0	112.9	112.3	114.2	104.9	98.7	116.9
<b>C18</b>	120.8	112.8	130.8	142.3	122.2	108.3	102.6	118.7	119.1	121.3	111.8	113.9	104.7	105.3	120.2
<b>C19</b>	..	..	..	..	..	..	..	..	..	..	..	..	..	..	..
<b>C20</b>	119.7	116.3	133.1	137.9	138.1	145.5	141.1	158.7	133.6	135.4	127.7	122.5	107.1	113.1	111.1
<b>C21</b>	109.0	120.3	124.6	137.9	130.1	121.4	101.5	127.1	128.2	121.8	147.9	128.4	104.1	118.2	135.9
<b>C22</b>	151.0	163.2	155.4	144.5	128.6	142.6	143.4	156.4	144.9	146.4	149.3	148.6	128.6	138.3	148.2
<b>C23</b>	125.8	122.8	136.1	138.8	103.1	95.1	109.3	128.2	136.0	146.7	138.7	138.3	140.5	142.8	144.5
<b>C24</b>	123.4	107.7	108.8	112.7	107.2	120.6	117.3	127.5	120.2	125.2	118.8	115.5	109.3	108.9	120.5
<b>C25</b>	123.0	135.5	119.9	127.1	128.0	97.2	109.1	126.7	188.0	156.9	164.9	152.9	152.6	163.2	171.5
<b>C26</b>	166.1	182.1	311.5	300.8	207.7	245.8	225.1	260.3	283.0	290.1	298.2	320.9	243.2	341.4	351.4
<b>C27</b>	132.4	154.0	157.6	159.4	133.6	146.2	152.2	165.8	164.9	161.7	175.1	169.8	146.2	174.4	178.6
<b>C28</b>	127.2	111.9	128.0	130.0	115.9	119.6	124.0	139.0	136.8	133.7	140.3	143.3	118.6	128.7	141.7
<b>C29</b>	159.7	191.1	109.1	134.4	138.6	136.0	151.9	165.9	133.7	135.0	166.1	132.1	136.1	159.2	164.9
<b>C30</b>	163.0	197.8	225.6	230.8	217.6	185.8	259.8	237.6	249.2	258.7	325.8	348.7	239.7	304.9	383.6
<b>C31</b>	108.9	118.1	120.1	116.6	100.5	106.8	107.9	118.5	103.9	112.8	116.0	114.2	93.6	109.2	116.8
<b>C32</b>	173.6	121.4	142.5	192.8	182.8	159.9	166.9	217.5	211.6	218.5	285.6	203.9	199.6	220.4	222.5
<b>C33</b>	133.5	104.9	120.4	104.9	156.3	81.0	100.7	134.1	104.6	140.9	120.6	124.5	129.4	135.4	122.4
<b>D</b>	<b>68.4</b>	<b>65.3</b>	<b>99.5</b>	<b>111.4</b>	<b>125.2</b>	<b>117.3</b>	<b>100.9</b>	<b>133.7</b>	<b>85.9</b>	<b>71.6</b>	<b>93.1</b>	<b>124.4</b>	<b>124.4</b>	<b>88.0</b>	<b>69.6</b>
<b>D35</b>	68.4	65.3	99.5	111.4	125.2	117.3	100.9	133.7	85.9	71.6	93.1	124.4	124.4	88.0	69.6

\* Preliminary data.

„..“ - Confidential data.