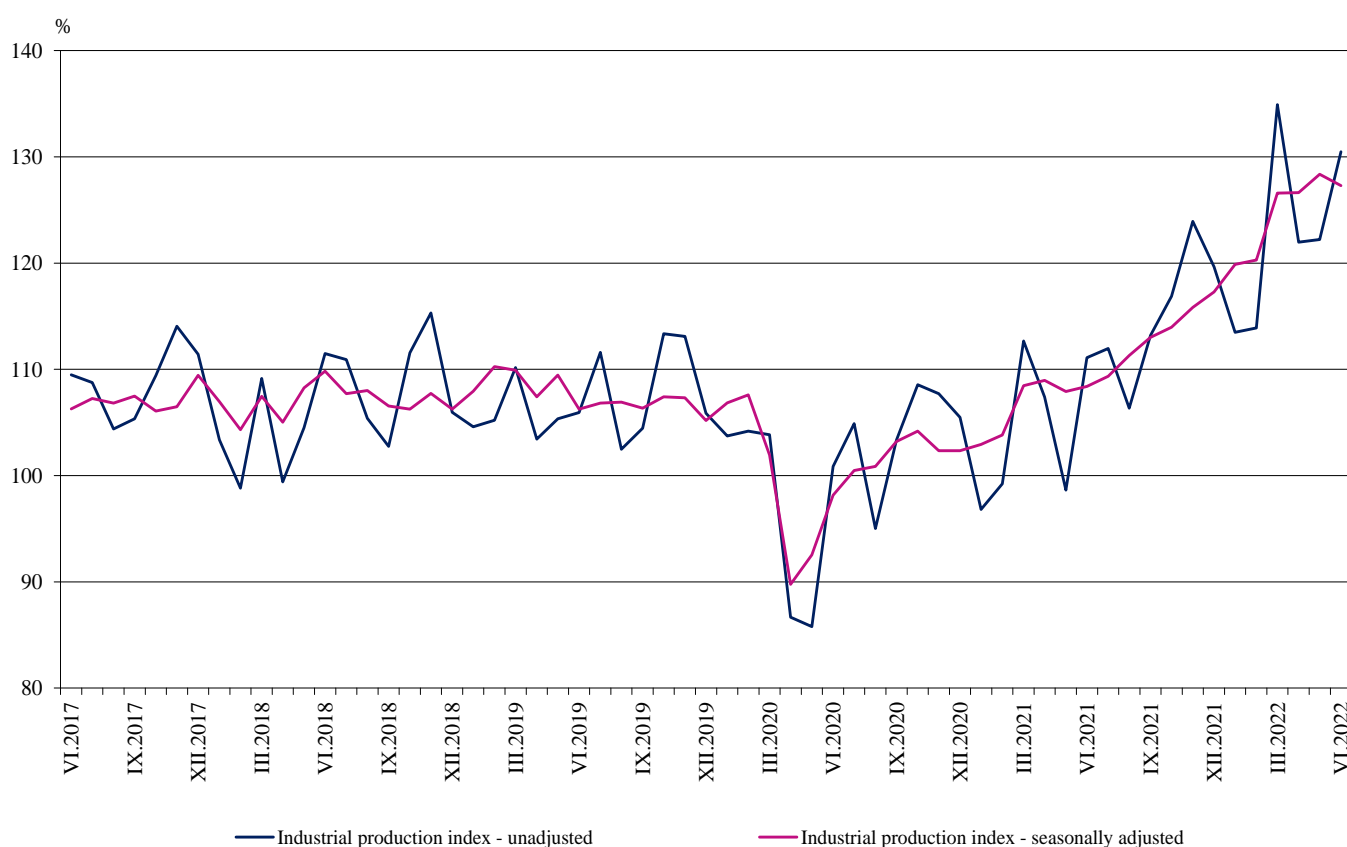


INDUSTRIAL PRODUCTION INDICES IN JUNE 2022¹

According to the preliminary data in June 2022 the Industrial Production Index², seasonally adjusted³, decreased by 0.8% compared to May 2022.

In June 2022, the calendar adjusted⁴ Industrial Production Index rose by 17.4% in comparison with the same month of 2021.

Figure 1. Industrial Production Indices (2015 = 100)



¹ June 2022 data are preliminary. The final data on Industrial Production and Turnover Indices for May 2022 can be found on the NSI website: <http://www.nsi.bg/en>.

² The Monthly Industrial Production and Industrial Turnover Indices measure changes in production and turnover values of industrial enterprises. This information can be used to assess the current economic development and for short-term forecasts. Indices do not measure the actual production level; they aim to measure the average change in the value of production between two points in time. Indices are compiled based on information collected through a representative sampling survey on industrial enterprises. The sample covers enterprises with an annual turnover of more than 97% of the total turnover in the industry. Industrial production indices are calculated at constant base year that is to say they are weighted with the structure of the value added at factor costs in the base year.

³ Seasonal adjustment is a statistical method, which eliminates the seasonal component of the time series.

⁴ Calendar adjustment is an adjustment for variations caused by calendar effects, different number of calendar and working days in the months, national holidays and outliers (for example, the presence of more non-working days in May could contribute to the decline in production in some activities).

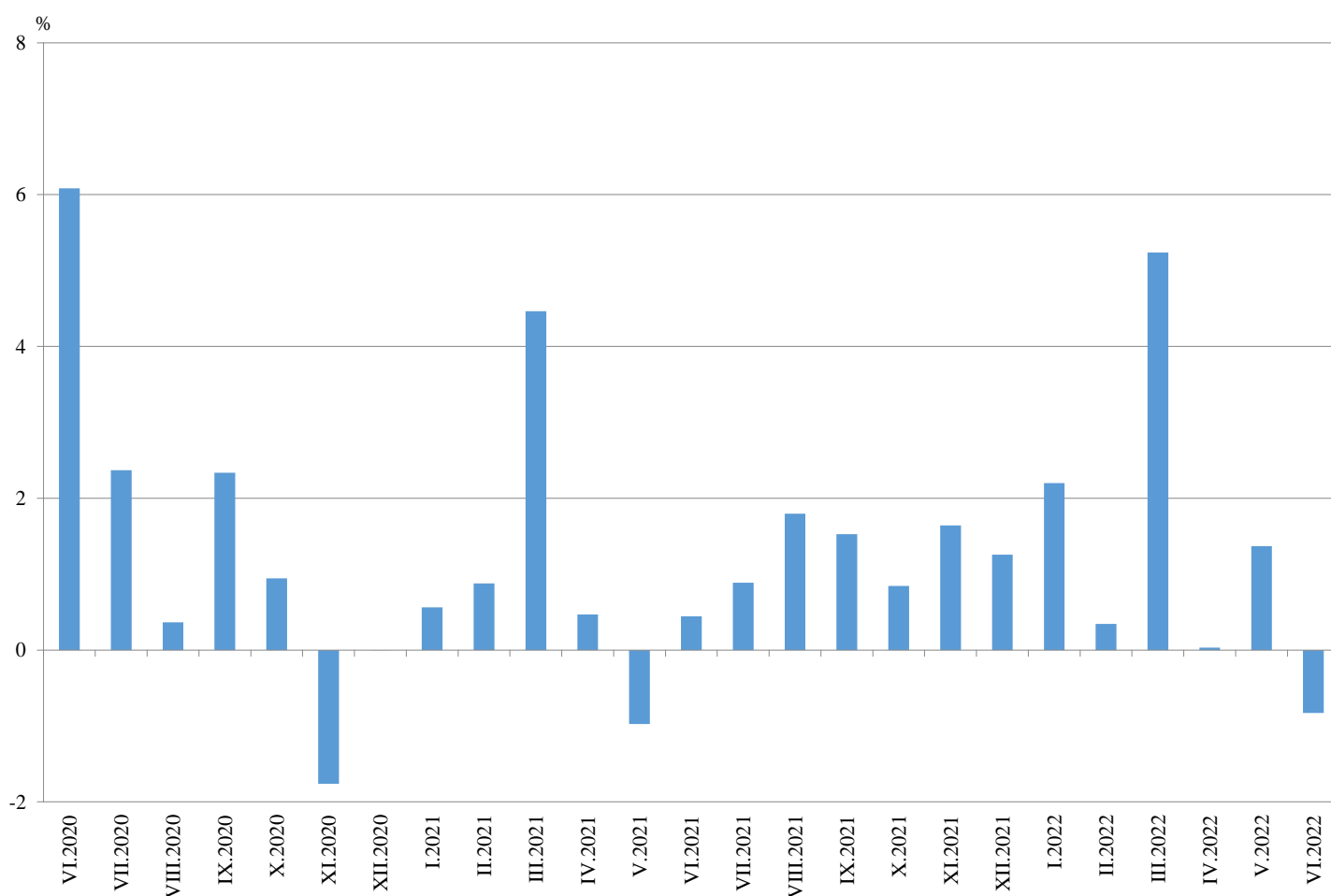
Monthly changes

In June 2022, compared to May 2022, the seasonally adjusted Industrial Production Index decreased in the mining and quarrying industry - by 9.6%, in the manufacturing - by 1.9% and increased in the electricity, gas, steam and air conditioning supply - by 13.9%.

The most significant decrease was seen in the repair and installation of machinery and equipment - by 21.4%, in the manufacture of wood and of products of wood and cork, except furniture; manufacture of articles of straw and plaiting materials - by 16.3%, in the manufacture of chemicals and chemical products - by 9.1% and in printing and reproduction of recorded media - by 8.2%.

A major growth was seen in the manufacture of basic pharmaceutical products and pharmaceutical preparations - by 13.1%, in the manufacture of tobacco products - by 12.5% and in the manufacture of motor vehicles, trailers and semi-trailers - by 8.2%.

Figure 2. Changes of Industrial Production Indices compared to the previous month (Seasonally adjusted)



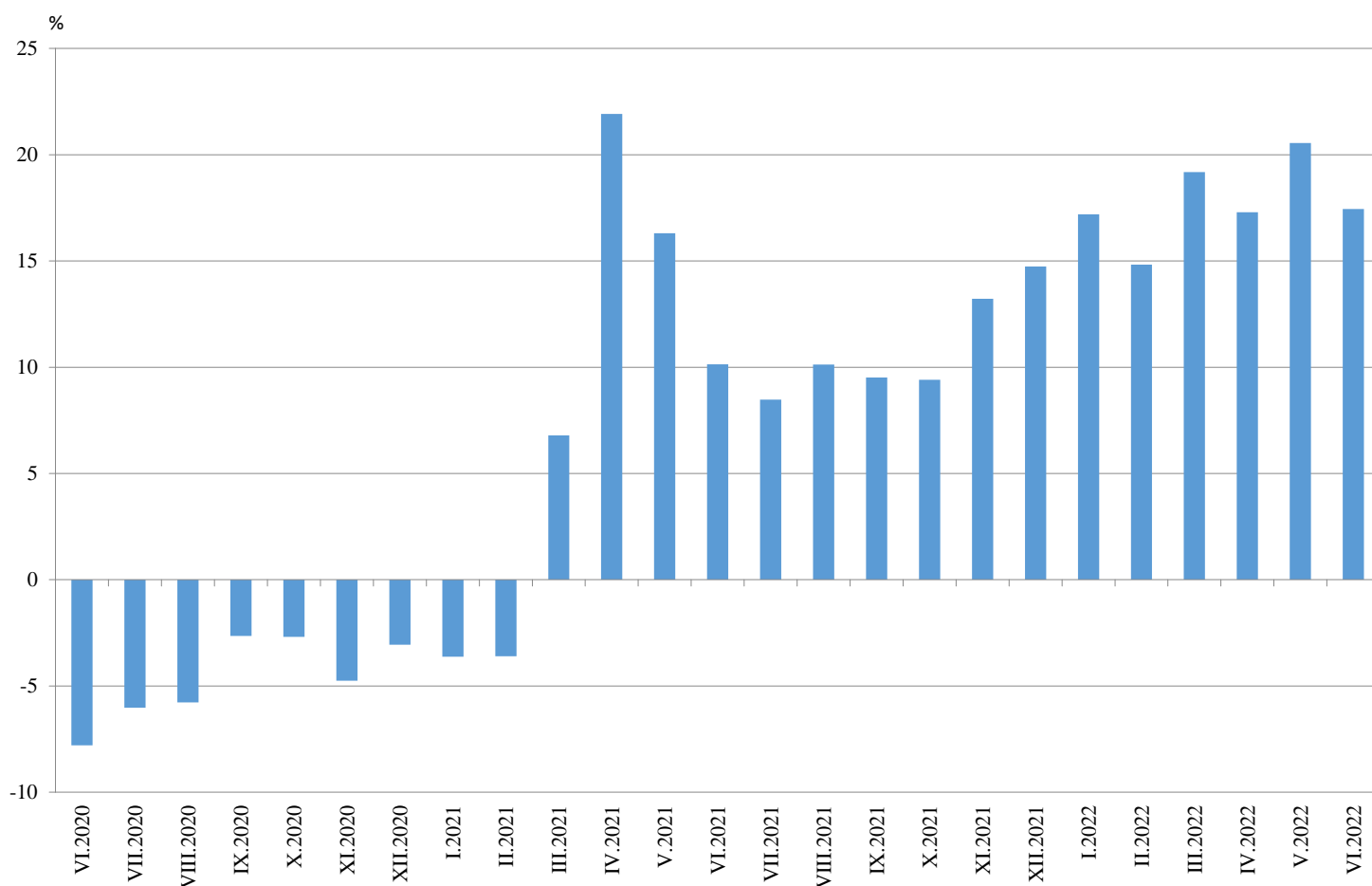
Annual changes

On an annual basis in June 2022, Industrial Production Index calculated from calendar adjusted data rose in the electricity, gas, steam and air conditioning supply - by 39.2%, in the manufacturing - by 16.1% and in the mining and quarrying industry - by 2.7%.

The most significant growth in the manufacturing compared to the same month of the previous year was registered in the other manufacturing - by 91.4%, in the manufacture of beverages - by 51.4%, in the manufacture of computer, electronic and optical products - by 34.5%, and in the manufacture of basic pharmaceutical products and pharmaceutical preparations - by 31.7%.

Decrease was seen in printing and reproduction of recorded media - by 7.2% and in the manufacture of rubber and plastic products - by 4.3%.

Figure 3. Changes of Industrial Production Indices compared to the same month of the previous year (Calendar adjusted)





Annex

Table 1

Changes of Industrial Production Indices compared to the previous month¹

(Per cent)

Economic activities	NACE.BG - 2008	2022					
		I	II	III	IV	V	VI*
Industry	B_TO_E36	2.2	0.3	5.2	0.0	1.4	-0.8
Mining and quarrying	B	10.0	-4.7	9.6	-16.2	13.0	-9.6
Mining of coal and lignite	B05	15.6	2.0	12.9	-19.8	8.5	-12.1
Extraction of crude petroleum and natural gas	B06
Mining of metal ores	B07	-5.8	-7.3	9.9	-20.5	26.6	-5.2
Other mining and quarrying	B08	8.3	-3.2	5.5	-5.4	-3.5	1.1
Mining support service activities	B09
Manufacturing	C	3.3	0.3	2.3	4.2	1.6	-1.9
Manufacture of food products	C10	6.0	0.5	3.7	0.6	1.8	-6.3
Manufacture of beverages	C11	58.1	-10.6	4.0	3.4	-3.6	1.5
Manufacture of tobacco products	C12	34.8	-13.8	14.3	12.1	3.3	12.5
Manufacture of textiles	C13	-5.9	-4.1	0.5	0.0	-6.1	2.6
Manufacture of wearing apparel	C14	2.8	-1.5	7.5	4.9	-1.4	-4.5
Manufacture of leather and related products	C15	4.4	-2.0	-4.8	3.3	-7.3	-1.5
Manufacture of wood and of products of wood and cork, except furniture; manufacture of articles of straw and plaiting materials	C16	7.8	1.3	12.4	-1.4	0.2	-16.3
Manufacture of paper and paper products	C17	-3.3	-0.7	4.5	-0.6	4.3	-1.7
Printing and reproduction of recorded media	C18	0.7	-7.4	5.4	2.1	-0.1	-8.2
Manufacture of coke and refined petroleum products	C19
Manufacture of chemicals and chemical products	C20	9.9	-4.4	-1.9	-7.1	1.3	-9.1
Manufacture of basic pharmaceutical products and pharmaceutical preparations	C21	-0.6	-7.0	0.0	10.5	-2.0	13.1
Manufacture of rubber and plastic products	C22	5.5	-3.3	0.1	0.1	-0.1	-2.8
Manufacture of other non-metallic mineral products	C23	13.3	1.1	-2.2	0.9	2.5	-6.1
Manufacture of basic metals	C24	2.7	2.1	0.3	-1.0	8.9	-3.3
Manufacture of fabricated metal products, except machinery and equipment	C25	8.9	-6.4	5.6	47.6	-13.7	-3.6
Manufacture of computer, electronic and optical products	C26	24.0	-6.0	4.8	14.5	3.4	-5.2
Manufacture of electrical equipment	C27	1.8	0.8	1.8	4.6	1.5	-0.1
Manufacture of machinery and equipment n.e.c.	C28	6.0	-0.2	2.5	0.4	3.1	-3.2
Manufacture of motor vehicles, trailers and semi-trailers	C29	-11.8	9.3	3.3	-12.0	5.6	8.2
Manufacture of other transport equipment	C30	-19.6	16.4	-12.6	9.1	11.6	6.2
Manufacture of furniture	C31	14.2	-1.5	-0.5	-4.8	5.0	-3.8
Other manufacturing	C32	-10.9	3.4	15.2	1.6	4.1	7.3
Repair and installation of machinery and equipment	C33	-4.1	4.1	11.8	-10.7	27.1	-21.4
Electricity, gas, steam and air conditioning supply	D	-4.2	2.1	24.2	-19.9	-1.4	13.9
Electricity, gas, steam and air conditioning supply	D35	-4.2	2.1	24.2	-19.9	-1.4	13.9

¹ Seasonally adjusted.

* Preliminary data.

„..“ - Confidential data.



Table 2

Changes of Industrial Production Indices compared to the same month of the previous year¹

(Per cent)

Economic activities	NACE.BG - 2008	2022					
		I	II	III	IV	V	VI*
Industry	B_TO_E36	17.2	14.8	19.2	17.3	20.5	17.4
Mining and quarrying	B	53.5	17.4	23.0	7.1	18.6	2.7
Mining of coal and lignite	B05	128.0	108.7	81.7	51.3	86.0	43.1
Extraction of crude petroleum and natural gas	B06
Mining of metal ores	B07	33.4	-15.7	-0.9	-14.3	8.3	-14.2
Other mining and quarrying	B08	10.8	10.8	7.8	4.2	-1.2	4.6
Mining support service activities	B09
Manufacturing	C	12.1	12.1	13.1	18.4	21.5	16.1
Manufacture of food products	C10	9.5	12.4	15.3	11.0	15.4	10.6
Manufacture of beverages	C11	38.6	30.8	40.1	42.7	40.5	51.4
Manufacture of tobacco products	C12	27.1	-15.9	-1.4	2.0	8.0	3.0
Manufacture of textiles	C13	9.0	1.4	10.1	5.7	2.9	1.2
Manufacture of wearing apparel	C14	13.3	8.0	22.1	26.9	32.5	18.9
Manufacture of leather and related products	C15	23.3	16.9	-1.8	-0.6	-0.2	-0.7
Manufacture of wood and of products of wood and cork, except furniture; manufacture of articles of straw and plaiting materials	C16	16.8	30.8	36.1	27.5	22.7	9.1
Manufacture of paper and paper products	C17	7.7	6.6	8.3	9.4	18.3	7.4
Printing and reproduction of recorded media	C18	9.7	-1.0	-0.3	5.3	10.4	-7.2
Manufacture of coke and refined petroleum products	C19
Manufacture of chemicals and chemical products	C20	38.8	25.0	23.6	31.1	22.2	0.1
Manufacture of basic pharmaceutical products and pharmaceutical preparations	C21	7.8	2.9	-9.6	16.3	7.0	31.7
Manufacture of rubber and plastic products	C22	5.0	-1.4	1.9	-1.8	0.6	-4.3
Manufacture of other non-metallic mineral products	C23	18.2	19.8	14.0	18.9	13.4	7.5
Manufacture of basic metals	C24	4.7	8.0	3.4	-2.5	17.4	14.0
Manufacture of fabricated metal products, except machinery and equipment	C25	-4.9	-2.1	2.6	43.6	22.9	28.8
Manufacture of computer, electronic and optical products	C26	28.9	26.1	23.0	42.9	41.3	34.5
Manufacture of electrical equipment	C27	3.8	8.5	6.0	5.1	9.8	11.7
Manufacture of machinery and equipment n.e.c.	C28	19.8	21.3	18.0	19.8	23.8	9.2
Manufacture of motor vehicles, trailers and semi-trailers	C29	-10.6	1.0	3.7	-0.4	20.1	19.1
Manufacture of other transport equipment	C30	-0.1	24.7	-6.4	-3.5	37.0	7.3
Manufacture of furniture	C31	7.6	8.9	10.4	3.5	12.3	4.2
Other manufacturing	C32	82.0	59.9	93.8	57.2	96.2	91.4
Repair and installation of machinery and equipment	C33	12.6	9.2	15.6	8.4	35.9	9.8
Electricity, gas, steam and air conditioning supply	D	28.9	28.5	53.0	19.5	14.1	39.2
Electricity, gas, steam and air conditioning supply	D35	28.9	28.5	53.0	19.5	14.1	39.2

¹ Calendar adjusted.

* Preliminary data.

„..“ - Confidential data.



Table 3

Industrial Production Indices
(Seasonally adjusted, 2015 = 100)

NACE.BG - 2008	2021							2022					
	VI	VII	VIII	IX	X	XI	XII	I	II	III	IV	V	VI*
B_TO_E36	108.4	109.3	111.3	113.0	114.0	115.8	117.3	119.9	120.3	126.6	126.6	128.4	127.3
B	117.7	106.4	124.6	123.8	114.3	124.1	123.3	135.6	129.2	141.6	118.6	134.0	121.2
B05	84.8	74.3	97.5	109.1	114.6	115.6	112.5	130.0	132.6	149.6	120.0	130.2	114.5
B06
B07	144.4	119.7	140.2	133.0	108.9	134.6	135.4	127.5	118.2	129.9	103.2	130.7	123.9
B08	142.1	146.5	135.5	146.1	135.6	141.8	146.4	158.5	153.5	161.9	153.1	147.8	149.4
B09
C	115.1	115.2	116.4	117.2	117.0	118.3	121.0	125.0	125.4	128.3	133.7	135.8	133.2
C10	110.6	114.2	111.7	112.1	114.6	115.2	115.9	122.8	123.5	128.2	128.9	131.2	123.0
C11	62.0	66.9	64.4	62.2	64.5	67.6	62.3	98.6	88.2	91.7	94.9	91.5	92.8
C12	49.3	48.9	35.8	42.0	32.2	34.1	26.9	36.3	31.3	35.8	40.1	41.5	46.6
C13	111.2	110.2	125.3	121.8	126.6	115.6	129.7	122.0	117.0	117.5	117.5	110.4	113.2
C14	69.5	69.1	74.0	71.2	73.7	75.7	77.4	79.5	78.3	84.2	88.3	87.1	83.2
C15	69.2	71.9	69.6	70.5	72.0	74.2	75.0	78.2	76.6	73.0	75.4	69.9	68.9
C16	80.8	84.2	90.8	89.2	79.0	79.2	88.5	95.4	96.6	108.5	107.0	107.3	89.8
C17	103.1	106.2	108.4	109.7	107.0	104.3	108.3	104.8	104.1	108.8	108.1	112.7	110.8
C18	117.1	118.4	125.9	116.8	122.2	124.8	120.3	121.2	112.2	118.2	120.7	120.6	110.7
C19
C20	122.2	123.1	120.1	119.2	130.0	135.6	140.9	154.8	147.9	145.1	134.8	136.6	124.1
C21	111.0	118.9	132.0	117.9	123.5	124.4	124.7	123.9	115.3	115.3	127.5	124.9	141.2
C22	150.4	141.0	151.8	142.0	141.3	139.6	146.2	154.2	149.2	149.3	149.5	149.4	145.2
C23	118.0	118.2	123.8	122.2	121.7	127.4	117.1	132.7	134.2	131.2	132.5	135.7	127.4
C24	108.1	94.1	96.0	95.8	105.3	105.3	111.4	114.3	116.8	117.1	116.0	126.4	122.3
C25	120.8	133.6	109.1	122.2	115.7	116.1	117.2	127.7	119.5	126.2	186.3	160.8	155.1
C26	209.9	213.2	224.3	236.5	278.7	268.7	205.4	254.7	239.4	250.8	287.1	296.9	281.5
C27	150.4	147.0	148.9	153.6	145.0	147.1	150.9	153.7	154.9	157.7	164.9	167.3	167.1
C28	121.0	116.4	118.7	116.1	120.8	121.3	121.7	129.1	128.8	132.0	132.5	136.6	132.2
C29	134.5	119.3	144.9	116.0	103.4	122.8	153.7	135.6	148.2	153.0	134.7	142.2	153.9
C30	264.7	258.5	190.2	252.5	227.2	219.6	257.3	206.9	240.8	210.3	229.5	256.1	271.9
C31	106.4	107.3	102.2	108.3	110.0	108.0	103.7	118.4	116.7	116.0	110.5	116.0	111.6
C32	128.4	140.8	150.3	170.2	132.7	176.2	201.3	179.4	185.4	213.6	217.0	226.0	242.4
C33	105.8	101.0	108.1	121.2	115.2	93.9	117.3	112.5	117.2	131.0	117.0	148.7	116.9
D	78.8	87.8	88.9	96.1	105.9	102.8	98.7	94.6	96.5	119.9	96.0	94.7	107.9
35	78.8	87.8	88.9	96.1	105.9	102.8	98.7	94.6	96.5	119.9	96.0	94.7	107.9

* Preliminary data.

...“ - Confidential data.



Table 4

Industrial Production Indices
(Calendar adjusted, 2015 = 100)

NACE.BG - 2008	2019	2020	2021						2022						
	VI	VI	VI	VII	VIII	IX	X	XI	XII	I	II	III	IV	V	VI*
B_TO_E36	108.4	99.9	110.1	112.2	106.6	113.2	119.0	122.8	119.7	116.1	114.6	133.1	123.6	123.4	129.3
B	93.3	105.2	113.8	103.6	122.3	129.3	127.6	134.1	133.6	132.6	123.8	137.9	109.0	125.7	116.9
B05	56.9	52.8	66.2	66.0	94.0	114.8	136.0	129.1	129.1	144.1	135.0	144.4	101.2	113.5	94.8
B06
B07	117.4	152.7	144.4	119.7	140.2	133.0	108.9	134.6	135.4	127.5	118.2	129.9	103.2	130.7	123.9
B08	100.0	111.8	153.1	156.4	143.2	158.6	150.0	159.7	148.5	110.8	120.4	154.3	149.8	150.8	160.2
B09
C	119.8	108.1	120.8	120.9	110.9	118.3	123.9	125.4	117.1	115.1	117.4	133.8	135.3	137.1	140.3
C10	109.1	113.9	113.7	115.7	112.1	117.8	125.9	122.2	120.0	109.9	109.1	129.0	122.7	130.5	125.8
C11	127.3	118.9	73.9	84.2	81.4	69.3	60.3	60.9	62.3	63.2	59.9	80.9	87.5	94.6	111.8
C12	41.3	37.9	60.2	62.7	32.8	44.7	35.2	38.5	26.9	20.6	18.9	35.7	45.7	50.4	62.0
C13	110.4	104.6	121.7	112.4	100.7	118.2	135.8	118.7	115.6	112.1	117.7	127.0	118.7	117.9	123.1
C14	88.6	74.9	72.9	79.7	72.3	69.7	74.5	76.5	74.3	86.5	78.6	86.0	81.8	81.3	86.7
C15	98.9	84.8	72.4	85.7	56.9	67.5	77.1	80.4	69.9	84.0	77.5	73.2	70.3	63.7	71.9
C16	76.7	74.8	85.9	90.5	90.7	94.2	84.7	84.2	84.2	81.0	84.5	107.6	107.1	112.1	93.7
C17	100.1	93.0	105.1	107.2	107.6	109.3	110.0	105.5	105.1	103.7	101.2	112.6	106.0	112.9	112.9
C18	123.8	94.7	120.2	119.2	120.1	112.8	130.8	142.3	122.2	108.3	102.6	118.7	119.1	121.3	111.5
C19
C20	119.7	119.9	127.0	126.7	116.1	117.3	133.1	137.9	138.1	145.5	141.1	158.7	133.6	135.4	127.1
C21	122.3	127.0	113.9	119.2	121.4	112.4	124.6	137.9	130.1	121.4	101.5	127.1	128.2	121.8	150.0
C22	142.9	130.3	156.2	148.1	147.4	144.8	155.4	144.5	128.6	142.6	143.4	156.4	144.9	146.4	149.5
C23	118.0	107.1	127.5	128.8	130.8	131.3	136.1	138.8	103.1	95.1	109.3	128.2	136.0	146.7	137.0
C24	89.8	117.6	104.7	95.7	86.7	86.4	108.8	112.7	107.2	120.6	117.3	127.5	120.2	125.2	119.4
C25	128.1	114.2	128.1	143.8	105.7	125.7	119.9	127.1	128.0	97.2	109.1	126.7	188.0	156.9	164.9
C26	167.4	148.0	216.4	213.6	197.0	226.8	311.5	300.8	207.7	245.8	225.1	260.3	283.0	290.1	291.2
C27	132.3	128.7	157.6	150.8	134.2	158.8	157.6	159.4	133.6	146.2	152.2	165.8	164.9	161.7	176.1
C28	129.3	90.7	129.2	121.2	103.2	115.7	128.0	130.0	115.9	119.6	124.0	139.0	136.8	133.7	141.2
C29	143.3	109.1	139.6	115.2	125.9	114.9	109.1	134.4	138.6	136.0	151.9	165.9	133.7	135.0	166.3
C30	142.4	168.1	287.0	250.0	145.4	224.8	225.6	230.8	217.6	185.8	259.8	237.6	249.2	258.7	308.0
C31	108.9	106.5	111.2	112.8	99.6	111.5	120.1	116.6	100.5	106.8	107.9	118.5	103.9	112.8	115.9
C32	174.4	93.9	143.1	142.7	149.6	181.5	142.5	192.8	182.8	159.9	166.9	217.5	211.6	218.5	273.8
C33	142.9	108.6	109.1	103.7	104.8	127.4	120.4	104.9	156.3	81.0	100.7	134.1	104.6	140.9	119.8
D	71.0	65.0	66.9	81.8	82.4	86.7	99.5	111.4	125.2	117.3	100.9	133.7	85.9	71.6	93.1
D35	71.0	65.0	66.9	81.8	82.4	86.7	99.5	111.4	125.2	117.3	100.9	133.7	85.9	71.6	93.1

* Preliminary data.

„..“ - Confidential data.