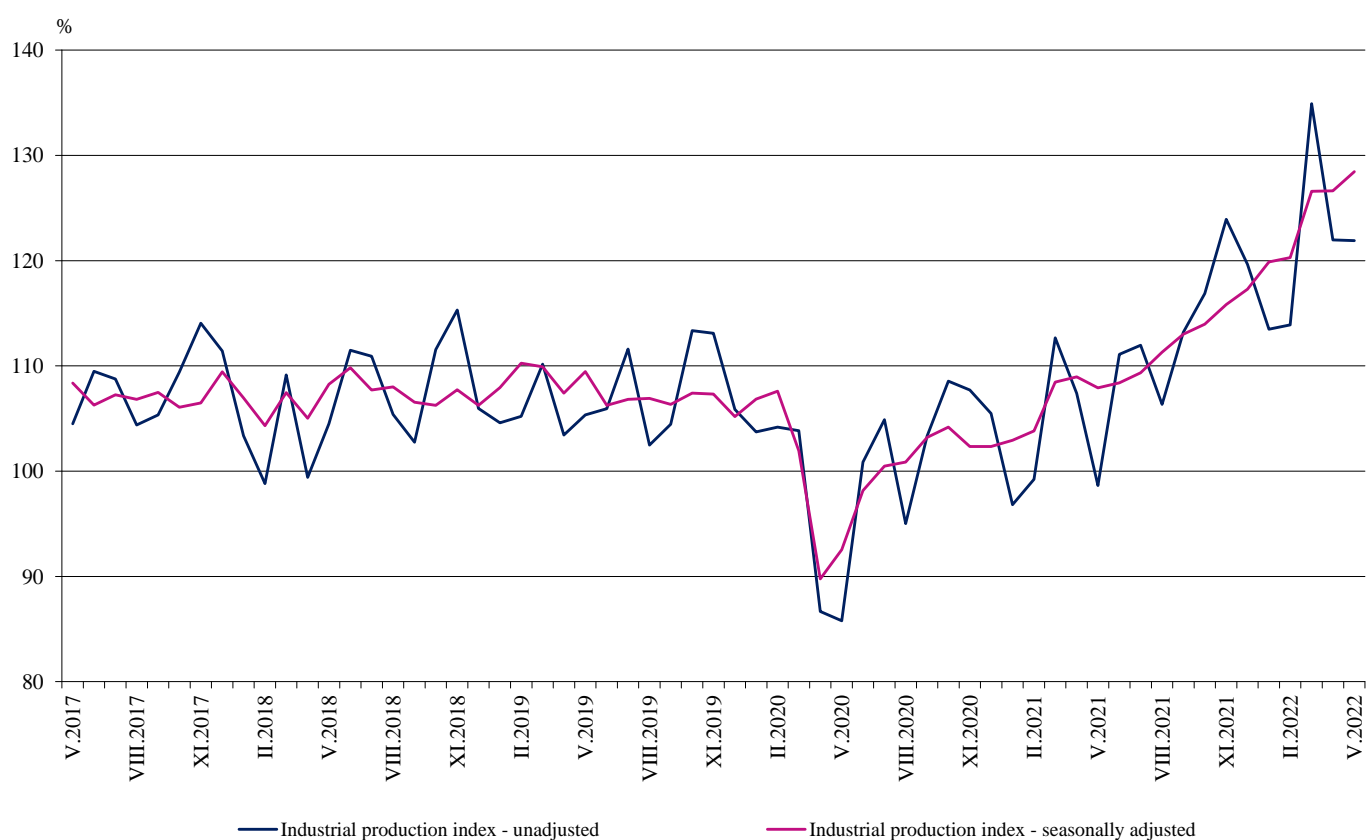


## INDUSTRIAL PRODUCTION INDICES IN MAY 2022<sup>1</sup>

According to the preliminary data in May 2022 the Industrial Production Index<sup>2</sup>, seasonally adjusted<sup>3</sup>, increased by 1.4% compared to April 2022.

In May 2022, the calendar adjusted<sup>4</sup> Industrial Production Index rose by 20.2% in comparison with the same month of 2021.

**Figure 1. Industrial Production Indices (2015 = 100)**



<sup>1</sup> May 2022 data are preliminary. The final data on Industrial Production and Turnover Indices for April 2022 can be found on the NSI website: <http://www.nsi.bg/en>.

<sup>2</sup> The Monthly Industrial Production and Industrial Turnover Indices measure changes in production and turnover values of industrial enterprises. This information can be used to assess the current economic development and for short-term forecasts. Indices do not measure the actual production level; they aim to measure the average change in the value of production between two points in time. Indices are compiled based on information collected through a representative sampling survey of industrial enterprises. The sample covers enterprises with an annual turnover of more than 97% of the total turnover in the industry. Industrial production indices are calculated at a constant base year that is to say they are weighted with the structure of the value added at factor costs in the base year.

<sup>3</sup> Seasonal adjustment is a statistical method, that eliminates the time series' seasonal component.

<sup>4</sup> Calendar adjustment is an adjustment for variations caused by calendar effects, the different number of calendar and working days in the months, national holidays and outliers (for example, the presence of more non-working days in May could contribute to the decline in production in some activities).

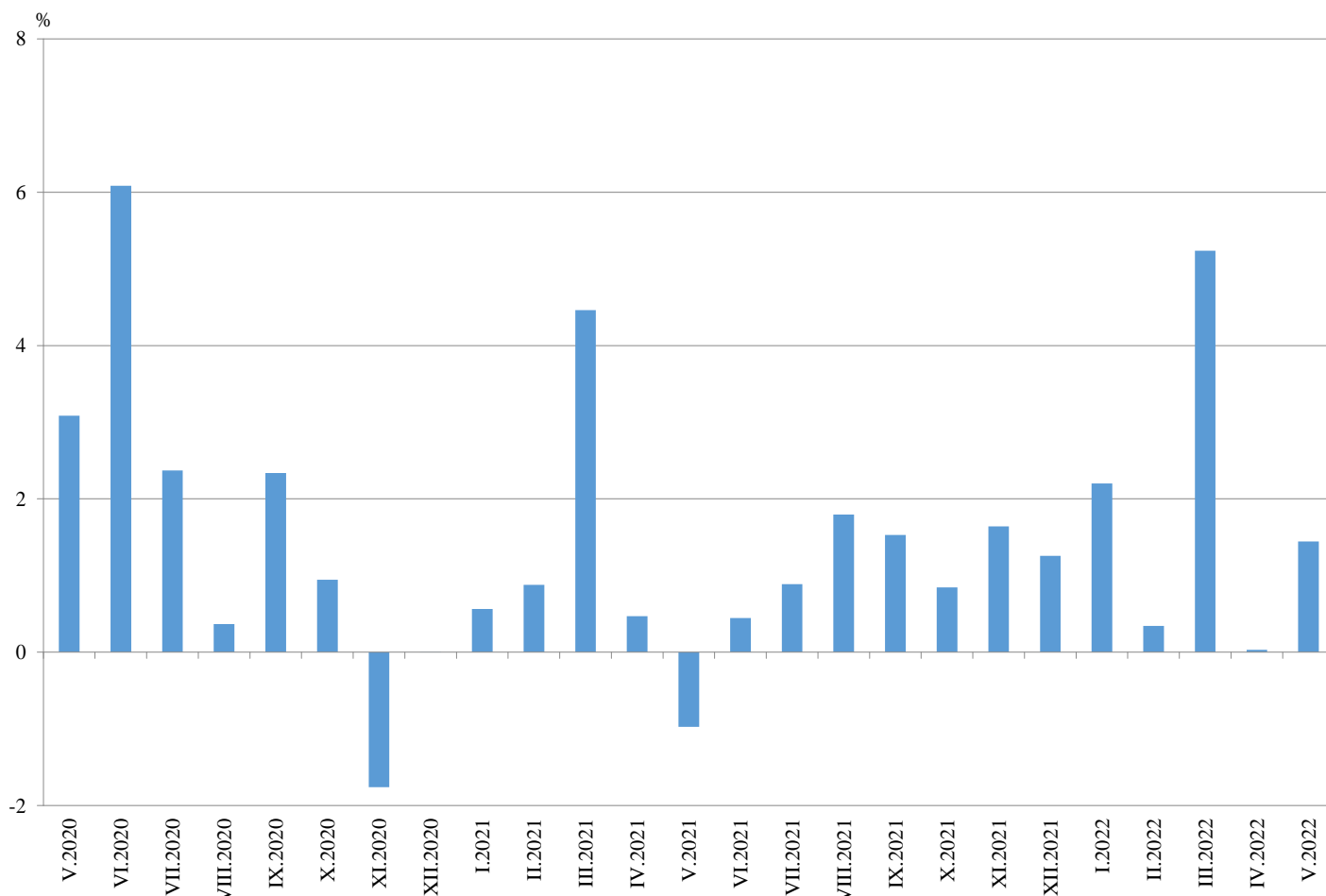
## Monthly changes

In May 2022, compared to April 2022, the seasonally adjusted Industrial Production Index increased in the mining and quarrying industry - by 13.0%, in the manufacturing - by 1.6% and decreased in the electricity, gas, steam and air conditioning supply - by 5.5%.

Major growth was seen in the repair and installation of machinery and equipment - by 27.4%, in the manufacture of other transport equipment - by 11.0% and in the manufacture of basic metals - by 8.9%.

The most significant decrease was observed in the manufacture of fabricated metal products, except machinery and equipment - by 15.0%, in the manufacture of leather and related products - by 6.6%, in the manufacture of textiles - by 6.1% and in the manufacture of beverages - by 5.5%.

**Figure 2. Changes of Industrial Production Indices compared to the previous month (Seasonally adjusted)**



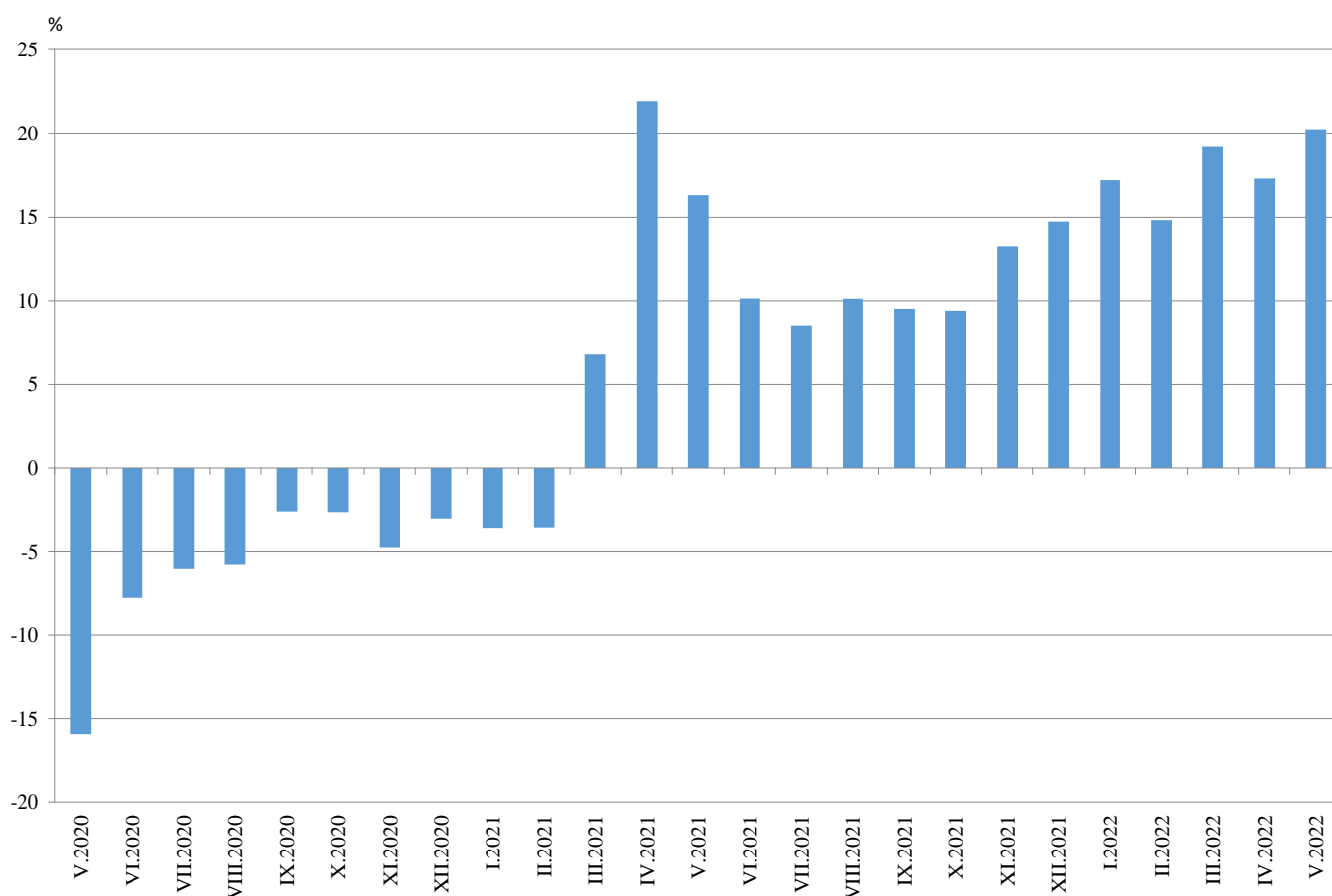
## Annual changes

On an annual basis in May 2022, Industrial Production Index calculated from calendar adjusted data rose in the manufacturing - by 21.1%, in the mining and quarrying industry - by 18.5% and in the electricity, gas, steam and air conditioning supply - by 14.1%.

The most significant growth in manufacturing compared to the same month of the previous year was registered in the other manufacturing - by 96.7%, in the manufacture of computer, electronic and optical products - by 41.2%, in the manufacture of beverages - by 37.5% and in the manufacture of other transport equipment- by 37.1%.

A decrease was seen in the manufacture of leather and related products - by 1.0%.

**Figure 3. Changes of Industrial Production Indices compared to the same month of the previous year (Calendar adjusted)**





Annex

Table 1

Change of Industrial Production Indices compared to the previous month<sup>1</sup>

(Percent)

Economic activities	NACE.BG - 2008	2021	2022				
		XII	I	II	III	IV	V*
<b>Industry</b>	<b>B_TO_E36</b>	<b>1.6</b>	<b>2.2</b>	<b>0.3</b>	<b>5.2</b>	<b>0.0</b>	<b>1.4</b>
<b>Mining and quarrying</b>	<b>B</b>	<b>8.6</b>	<b>10.0</b>	<b>-4.7</b>	<b>9.6</b>	<b>-16.2</b>	<b>13.0</b>
Mining of coal and lignite	B05	0.9	15.6	2.0	12.9	-19.8	8.9
Extraction of crude petroleum and natural gas	B06	..	..	..	..	..	..
Mining of metal ores	B07	23.5	-5.8	-7.3	9.9	-20.5	26.6
Other mining and quarrying	B08	4.6	8.3	-3.2	5.5	-5.4	-3.9
Mining support service activities	B09	..	..	..	..	..	..
<b>Manufacturing</b>	<b>C</b>	<b>1.1</b>	<b>3.3</b>	<b>0.3</b>	<b>2.3</b>	<b>4.2</b>	<b>1.6</b>
Manufacture of food products	C10	0.5	6.0	0.5	3.7	0.6	1.6
Manufacture of beverages	C11	4.8	58.1	-10.6	4.0	3.4	-5.5
Manufacture of tobacco products	C12	5.7	34.8	-13.8	14.3	12.1	2.5
Manufacture of textiles	C13	-8.7	-5.9	-4.1	0.5	0.0	-6.1
Manufacture of wearing apparel	C14	2.6	2.8	-1.5	7.5	4.9	1.2
Manufacture of leather and related products	C15	3.1	4.4	-2.0	-4.8	3.3	-6.6
Manufacture of wood and of products of wood and cork, except furniture; manufacture of articles of straw and plaiting materials	C16	0.2	7.8	1.3	12.4	-1.4	1.8
Manufacture of paper and paper products	C17	-2.5	-3.3	-0.7	4.5	-0.6	4.4
Printing and reproduction of recorded media	C18	2.2	0.7	-7.4	5.4	2.1	0.4
Manufacture of coke and refined petroleum products	C19	..	..	..	..	..	..
Manufacture of chemicals and chemical products	C20	4.3	9.9	-4.4	-1.9	-7.1	1.7
Manufacture of basic pharmaceutical products and pharmaceutical preparations	C21	0.7	-0.6	-7.0	0.0	10.5	-3.0
Manufacture of rubber and plastic products	C22	-1.2	5.5	-3.3	0.1	0.1	0.2
Manufacture of other non-metallic mineral products	C23	4.7	13.3	1.1	-2.2	0.9	3.1
Manufacture of basic metals	C24	-0.1	2.7	2.1	0.3	-1.0	8.9
Manufacture of fabricated metal products, except machinery and equipment	C25	0.4	8.9	-6.4	5.6	47.6	-15.0
Manufacture of computer, electronic and optical products	C26	-3.6	24.0	-6.0	4.8	14.5	3.4
Manufacture of electrical equipment	C27	1.5	1.8	0.8	1.8	4.6	1.4
Manufacture of machinery and equipment n.e.c.	C28	0.4	6.0	-0.2	2.5	0.4	3.1
Manufacture of motor vehicles, trailers and semi-trailers	C29	18.8	-11.8	9.3	3.3	-12.0	2.7
Manufacture of other transport equipment	C30	-3.3	-19.6	16.4	-12.6	9.1	11.0
Manufacture of furniture	C31	-1.8	14.2	-1.5	-0.5	-4.8	5.8
Other manufacturing	C32	32.8	-10.9	3.4	15.2	1.6	4.0
Repair and installation of machinery and equipment	C33	-18.5	-4.1	4.1	11.8	-10.7	27.4
<b>Electricity, gas, steam and air conditioning supply</b>	<b>D</b>	<b>-2.9</b>	<b>-4.2</b>	<b>2.1</b>	<b>24.2</b>	<b>-19.9</b>	<b>-5.5</b>
Electricity, gas, steam and air conditioning supply	D35	-2.9	-4.2	2.1	24.2	-19.9	-5.5

<sup>1</sup> Seasonally adjusted.

\* Preliminary data.

„..“ - Confidential data.



**Table 2**

**Change of Industrial Production Indices compared to the same month of the previous year<sup>1</sup>**

(Percent)

Economic activities	NACE.BG - 2008	2021	2022				
		XII	I	II	III	IV	V*
<b>Industry</b>	<b>B_TO_E36</b>	<b>14.7</b>	<b>17.2</b>	<b>14.8</b>	<b>19.2</b>	<b>17.3</b>	<b>20.2</b>
<b>Mining and quarrying</b>	<b>B</b>	<b>22.9</b>	<b>53.5</b>	<b>17.4</b>	<b>23.0</b>	<b>7.1</b>	<b>18.5</b>
Mining of coal and lignite	B05	76.4	128.0	108.7	81.7	51.3	86.0
Extraction of crude petroleum and natural gas	B06	..	..	..	..	..	..
Mining of metal ores	B07	5.6	33.4	-15.7	-0.9	-14.3	8.3
Other mining and quarrying	B08	1.3	10.8	10.8	7.8	4.2	-1.8
Mining support service activities	B09	..	..	..	..	..	..
<b>Manufacturing</b>	<b>C</b>	<b>9.5</b>	<b>12.1</b>	<b>12.1</b>	<b>13.1</b>	<b>18.4</b>	<b>21.1</b>
Manufacture of food products	C10	11.1	9.5	12.4	15.3	11.0	14.7
Manufacture of beverages	C11	-17.2	38.6	30.8	40.1	42.7	37.5
Manufacture of tobacco products	C12	-33.9	27.1	-15.9	-1.4	2.0	8.0
Manufacture of textiles	C13	28.1	9.0	1.4	10.1	5.7	2.8
Manufacture of wearing apparel	C14	16.9	13.3	8.0	22.1	26.9	32.2
Manufacture of leather and related products	C15	15.9	23.3	16.9	-1.8	-0.6	-1.0
Manufacture of wood and of products of wood and cork, except furniture; manufacture of articles of straw and plaiting materials	C16	13.0	16.8	30.8	36.1	27.5	22.7
Manufacture of paper and paper products	C17	19.6	7.7	6.6	8.3	9.4	18.3
Printing and reproduction of recorded media	C18	17.2	9.7	-1.0	-0.3	5.3	10.4
Manufacture of coke and refined petroleum products	C19	..	..	..	..	..	..
Manufacture of chemicals and chemical products	C20	26.1	38.8	25.0	23.6	31.1	22.2
Manufacture of basic pharmaceutical products and pharmaceutical preparations	C21	1.7	7.8	2.9	-9.6	16.3	6.4
Manufacture of rubber and plastic products	C22	-2.0	5.0	-1.4	1.9	-1.8	0.4
Manufacture of other non-metallic mineral products	C23	7.6	18.2	19.8	14.0	18.9	13.9
Manufacture of basic metals	C24	-6.2	4.7	8.0	3.4	-2.5	17.4
Manufacture of fabricated metal products, except machinery and equipment	C25	0.0	-4.9	-2.1	2.6	43.6	20.7
Manufacture of computer, electronic and optical products	C26	16.2	28.9	26.1	23.0	42.9	41.2
Manufacture of electrical equipment	C27	6.3	3.8	8.5	6.0	5.1	9.7
Manufacture of machinery and equipment n.e.c.	C28	10.7	19.8	21.3	18.0	19.8	23.6
Manufacture of motor vehicles, trailers and semi-trailers	C29	-9.7	-10.6	1.0	3.7	-0.4	20.5
Manufacture of other transport equipment	C30	64.9	-0.1	24.7	-6.4	-3.5	37.1
Manufacture of furniture	C31	-1.3	7.6	8.9	10.4	3.5	13.0
Other manufacturing	C32	111.8	82.0	59.9	93.8	57.2	96.7
Repair and installation of machinery and equipment	C33	31.3	12.6	9.2	15.6	8.4	35.7
<b>Electricity, gas, steam and air conditioning supply</b>	<b>D</b>	<b>36.8</b>	<b>28.9</b>	<b>28.5</b>	<b>53.0</b>	<b>19.5</b>	<b>14.1</b>
Electricity, gas, steam and air conditioning supply	D35	36.8	28.9	28.5	53.0	19.5	14.1

<sup>1</sup> Calendar adjusted.

\* Preliminary data.

„...“ - Confidential data.



Table 3

**Industrial Production Indices**  
(Seasonally adjusted, 2015 = 100)

NACE.BG - 2008	2021								2022				
	V	VI	VII	VIII	IX	X	XI	XII	I	II	III	IV	V*
<b>B_TO_E36</b>	<b>107.9</b>	<b>108.4</b>	<b>109.3</b>	<b>111.3</b>	<b>113.0</b>	<b>114.0</b>	<b>115.8</b>	<b>117.3</b>	<b>119.9</b>	<b>120.3</b>	<b>126.6</b>	<b>126.6</b>	<b>128.5</b>
<b>B</b>	<b>113.4</b>	<b>117.7</b>	<b>106.4</b>	<b>124.6</b>	<b>123.8</b>	<b>114.3</b>	<b>124.1</b>	<b>123.3</b>	<b>135.6</b>	<b>129.2</b>	<b>141.6</b>	<b>118.6</b>	<b>134.1</b>
<b>B05</b>	78.6	84.8	74.3	97.5	109.1	114.6	115.6	112.5	130.0	132.6	149.6	120.0	130.7
<b>B06</b>	..	..	..	..	..	..	..	..	..	..	..	..	..
<b>B07</b>	120.7	144.4	119.7	140.2	133.0	108.9	134.6	135.4	127.5	118.2	129.9	103.2	130.7
<b>B08</b>	148.7	142.1	146.5	135.5	146.1	135.6	141.8	146.4	158.5	153.5	161.9	153.1	147.2
<b>B09</b>	..	..	..	..	..	..	..	..	..	..	..	..	..
<b>C</b>	<b>114.8</b>	<b>115.1</b>	<b>115.2</b>	<b>116.4</b>	<b>117.2</b>	<b>117.0</b>	<b>118.3</b>	<b>121.0</b>	<b>125.0</b>	<b>125.4</b>	<b>128.3</b>	<b>133.7</b>	<b>135.9</b>
<b>C10</b>	114.9	110.6	114.2	111.7	112.1	114.6	115.2	115.9	122.8	123.5	128.2	128.9	130.9
<b>C11</b>	64.6	62.0	66.9	64.4	62.2	64.5	67.6	62.3	98.6	88.2	91.7	94.9	89.7
<b>C12</b>	40.2	49.3	48.9	35.8	42.0	32.2	34.1	26.9	36.3	31.3	35.8	40.1	41.1
<b>C13</b>	105.5	111.2	110.2	125.3	121.8	126.6	115.6	129.7	122.0	117.0	117.5	117.5	110.3
<b>C14</b>	69.5	69.5	69.1	74.0	71.2	73.7	75.7	77.4	79.5	78.3	84.2	88.3	89.4
<b>C15</b>	70.1	69.2	71.9	69.6	70.5	72.0	74.2	75.0	78.2	76.6	73.0	75.4	70.4
<b>C16</b>	89.4	80.8	84.2	90.8	89.2	79.0	79.2	88.5	95.4	96.6	108.5	107.0	108.9
<b>C17</b>	96.5	103.1	106.2	108.4	109.7	107.0	104.3	108.3	104.8	104.1	108.8	108.1	112.8
<b>C18</b>	110.0	117.1	118.4	125.9	116.8	122.2	124.8	120.3	121.2	112.2	118.2	120.7	121.2
<b>C19</b>	..	..	..	..	..	..	..	..	..	..	..	..	..
<b>C20</b>	111.9	122.2	123.1	120.1	119.2	130.0	135.6	140.9	154.8	147.9	145.1	134.8	137.0
<b>C21</b>	116.8	111.0	118.9	132.0	117.9	123.5	124.4	124.7	123.9	115.3	115.3	127.5	123.7
<b>C22</b>	149.1	150.4	141.0	151.8	142.0	141.3	139.6	146.2	154.2	149.2	149.3	149.5	149.9
<b>C23</b>	120.4	118.0	118.2	123.8	122.2	121.7	127.4	117.1	132.7	134.2	131.2	132.5	136.6
<b>C24</b>	110.8	108.1	94.1	96.0	95.8	105.3	105.3	111.4	114.3	116.8	117.1	116.0	126.3
<b>C25</b>	132.4	120.8	133.6	109.1	122.2	115.7	116.1	117.2	127.7	119.5	126.2	186.3	158.4
<b>C26</b>	215.1	209.9	213.2	224.3	236.5	278.7	268.7	205.4	254.7	239.4	250.8	287.1	296.8
<b>C27</b>	154.2	150.4	147.0	148.9	153.6	145.0	147.1	150.9	153.7	154.9	157.7	164.9	167.2
<b>C28</b>	111.7	121.0	116.4	118.7	116.1	120.8	121.3	121.7	129.1	128.8	132.0	132.5	136.6
<b>C29</b>	114.3	134.5	119.3	144.9	116.0	103.4	122.8	153.7	135.6	148.2	153.0	134.7	138.4
<b>C30</b>	189.4	264.7	258.5	190.2	252.5	227.2	219.6	257.3	206.9	240.8	210.3	229.5	254.8
<b>C31</b>	104.1	106.4	107.3	102.2	108.3	110.0	108.0	103.7	118.4	116.7	116.0	110.5	116.9
<b>C32</b>	116.0	128.4	140.8	150.3	170.2	132.7	176.2	201.3	179.4	185.4	213.6	217.0	225.6
<b>C33</b>	112.0	105.8	101.0	108.1	121.2	115.2	93.9	117.3	112.5	117.2	131.0	117.0	149.1
<b>D</b>	<b>79.2</b>	<b>78.8</b>	<b>87.8</b>	<b>88.9</b>	<b>96.1</b>	<b>105.9</b>	<b>102.8</b>	<b>98.7</b>	<b>94.6</b>	<b>96.5</b>	<b>119.9</b>	<b>96.0</b>	<b>90.7</b>
<b>35</b>	79.2	78.8	87.8	88.9	96.1	105.9	102.8	98.7	94.6	96.5	119.9	96.0	90.7

\* Preliminary data.

„...“ - Confidential data.



Table 4

**Industrial Production Indices**  
(Calendar adjusted, 2015 = 100)

NACE.BG - 2008	2019	2020	2021								2022				
	V	V	V	VI	VII	VIII	IX	X	XI	XII	I	II	III	IV	V*
<b>B_TO_E36</b>	<b>104.7</b>	<b>88.0</b>	<b>102.4</b>	<b>110.1</b>	<b>112.2</b>	<b>106.6</b>	<b>113.2</b>	<b>119.0</b>	<b>122.8</b>	<b>119.7</b>	<b>116.1</b>	<b>114.6</b>	<b>133.1</b>	<b>123.6</b>	<b>123.1</b>
<b>B</b>	<b>100.7</b>	<b>95.0</b>	<b>106.0</b>	<b>113.8</b>	<b>103.6</b>	<b>122.3</b>	<b>129.3</b>	<b>127.6</b>	<b>134.1</b>	<b>133.6</b>	<b>132.6</b>	<b>123.8</b>	<b>137.9</b>	<b>109.0</b>	<b>125.5</b>
<b>B05</b>	78.5	45.2	61.0	66.2	66.0	94.0	114.8	136.0	129.1	129.1	144.1	135.0	144.4	101.2	113.5
<b>B06</b>	..	..	..	..	..	..	..	..	..	..	..	..	..	..	..
<b>B07</b>	121.5	135.5	120.7	144.4	119.7	140.2	133.0	108.9	134.6	135.4	127.5	118.2	129.9	103.2	130.7
<b>B08</b>	109.0	90.3	152.7	153.1	156.4	143.2	158.6	150.0	159.7	148.5	110.8	120.4	154.3	149.8	149.8
<b>B09</b>	..	..	..	..	..	..	..	..	..	..	..	..	..	..	..
<b>C</b>	<b>114.4</b>	<b>95.4</b>	<b>112.9</b>	<b>120.8</b>	<b>120.9</b>	<b>110.9</b>	<b>118.3</b>	<b>123.9</b>	<b>125.4</b>	<b>117.1</b>	<b>115.1</b>	<b>117.4</b>	<b>133.8</b>	<b>135.3</b>	<b>136.7</b>
<b>C10</b>	108.3	101.9	113.0	113.7	115.7	112.1	117.8	125.9	122.2	120.0	109.9	109.1	129.0	122.7	129.7
<b>C11</b>	110.5	98.2	67.3	73.9	84.2	81.4	69.3	60.3	60.9	62.3	63.2	59.9	80.9	87.5	92.6
<b>C12</b>	67.6	36.1	46.6	60.2	62.7	32.8	44.7	35.2	38.5	26.9	20.6	18.9	35.7	45.7	50.4
<b>C13</b>	99.1	107.2	114.6	121.7	112.4	100.7	118.2	135.8	118.7	115.6	112.1	117.7	127.0	118.7	117.8
<b>C14</b>	76.7	76.7	61.4	72.9	79.7	72.3	69.7	74.5	76.5	74.3	86.5	78.6	86.0	81.8	81.1
<b>C15</b>	99.8	69.6	63.8	72.4	85.7	56.9	67.5	77.1	80.4	69.9	84.0	77.5	73.2	70.3	63.2
<b>C16</b>	80.3	61.9	91.3	85.9	90.5	90.7	94.2	84.7	84.2	84.2	81.0	84.5	107.6	107.1	112.0
<b>C17</b>	106.2	89.7	95.4	105.1	107.2	107.6	109.3	110.0	105.5	105.1	103.7	101.2	112.6	106.0	112.9
<b>C18</b>	129.3	89.8	109.9	120.2	119.2	120.1	112.8	130.8	142.3	122.2	108.3	102.6	118.7	119.1	121.3
<b>C19</b>	..	..	..	..	..	..	..	..	..	..	..	..	..	..	..
<b>C20</b>	121.0	109.5	110.8	127.0	126.7	116.1	117.3	133.1	137.9	138.1	145.5	141.1	158.7	133.6	135.3
<b>C21</b>	114.4	117.4	113.8	113.9	119.2	121.4	112.4	124.6	137.9	130.1	121.4	101.5	127.1	128.2	121.0
<b>C22</b>	136.9	119.4	145.4	156.2	148.1	147.4	144.8	155.4	144.5	128.6	142.6	143.4	156.4	144.9	146.1
<b>C23</b>	118.0	94.9	129.4	127.5	128.8	130.8	131.3	136.1	138.8	103.1	95.1	109.3	128.2	136.0	147.4
<b>C24</b>	92.5	107.3	106.6	104.7	95.7	86.7	86.4	108.8	112.7	107.2	120.6	117.3	127.5	120.2	125.2
<b>C25</b>	112.5	102.7	127.7	128.1	143.8	105.7	125.7	119.9	127.1	128.0	97.2	109.1	126.7	188.0	154.1
<b>C26</b>	140.0	136.9	205.3	216.4	213.6	197.0	226.8	311.5	300.8	207.7	245.8	225.1	260.3	283.0	290.0
<b>C27</b>	126.9	104.4	147.2	157.6	150.8	134.2	158.8	157.6	159.4	133.6	146.2	152.2	165.8	164.9	161.6
<b>C28</b>	124.3	75.3	108.0	129.2	121.2	103.2	115.7	128.0	130.0	115.9	119.6	124.0	139.0	136.8	133.5
<b>C29</b>	156.2	58.1	112.4	139.6	115.2	125.9	114.9	109.1	134.4	138.6	136.0	151.9	165.9	133.7	135.5
<b>C30</b>	168.6	165.6	188.8	287.0	250.0	145.4	224.8	225.6	230.8	217.6	185.8	259.8	237.6	249.2	258.8
<b>C31</b>	105.0	82.0	100.5	111.2	112.8	99.6	111.5	120.1	116.6	100.5	106.8	107.9	118.5	103.9	113.5
<b>C32</b>	146.8	79.4	111.4	143.1	142.7	149.6	181.5	142.5	192.8	182.8	159.9	166.9	217.5	211.6	219.0
<b>C33</b>	119.4	83.9	103.7	109.1	103.7	104.8	127.4	120.4	104.9	156.3	81.0	100.7	134.1	104.6	140.8
<b>D</b>	<b>67.9</b>	<b>57.2</b>	<b>62.8</b>	<b>66.9</b>	<b>81.8</b>	<b>82.4</b>	<b>86.7</b>	<b>99.5</b>	<b>111.4</b>	<b>125.2</b>	<b>117.3</b>	<b>100.9</b>	<b>133.7</b>	<b>85.9</b>	<b>71.6</b>
<b>D35</b>	67.9	57.2	62.8	66.9	81.8	82.4	86.7	99.5	111.4	125.2	117.3	100.9	133.7	85.9	71.6

\* Preliminary data.

...“ - Confidential data.