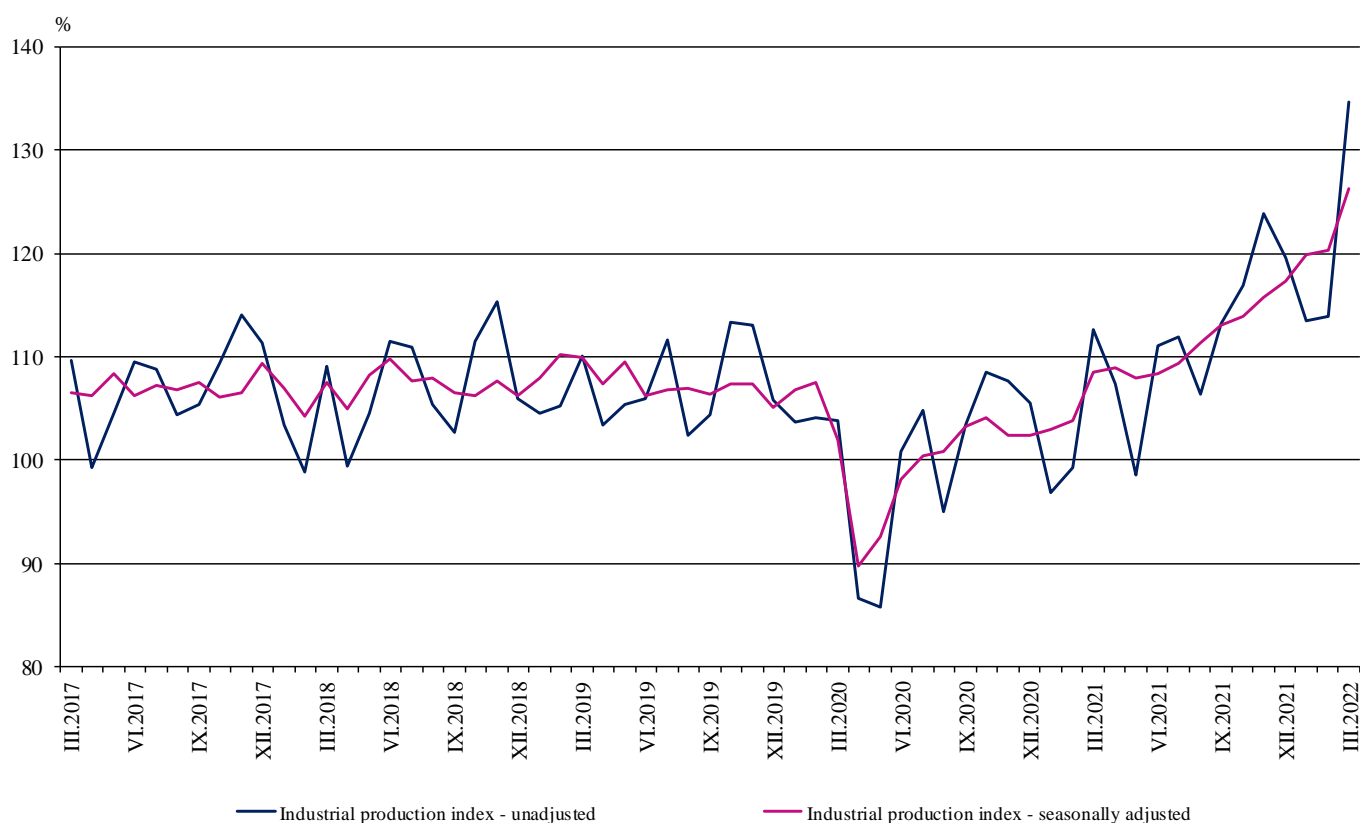


INDUSTRIAL PRODUCTION INDICES IN MARCH 2022¹

According to the preliminary data, in March 2022, the Industrial Production Index², seasonally adjusted³, increased by 5.0% compared to February 2022.

In March 2022, the calendar adjusted⁴ Industrial Production Index rose by 19.0% in comparison with the same month of 2021.

Figure 1. Industrial Production Indices (2015 = 100)



¹ March 2022 data are preliminary. The final data on Industrial Production and Turnover Indices for February 2022 can be found on the NSI website: <http://www.nsi.bg/en>.

² The Monthly Industrial Production and Industrial Turnover Indices measure changes in production and turnover values of industrial enterprises. This information can be used to assess the current economic development and for short-term forecasts. Indices do not measure the actual production level; they aim to measure the average change in the value of production between two points in time. Indices are compiled based on information collected through a representative sampling survey on industrial enterprises. The sample covers enterprises with an annual turnover of more than 97% of the total turnover in the industry. Industrial production indices are calculated at constant base year that is to say they are weighted with the structure of the value added at factor costs in the base year.

³ Seasonal adjustment is a statistical method, which eliminates the seasonal component of the time series.

⁴ Calendar adjustment is an adjustment for variations caused by calendar effects, different number of calendar and working days in the months, national holidays and outliers (for example, the presence of more non-working days in May could contribute to the decline in production in some activities).

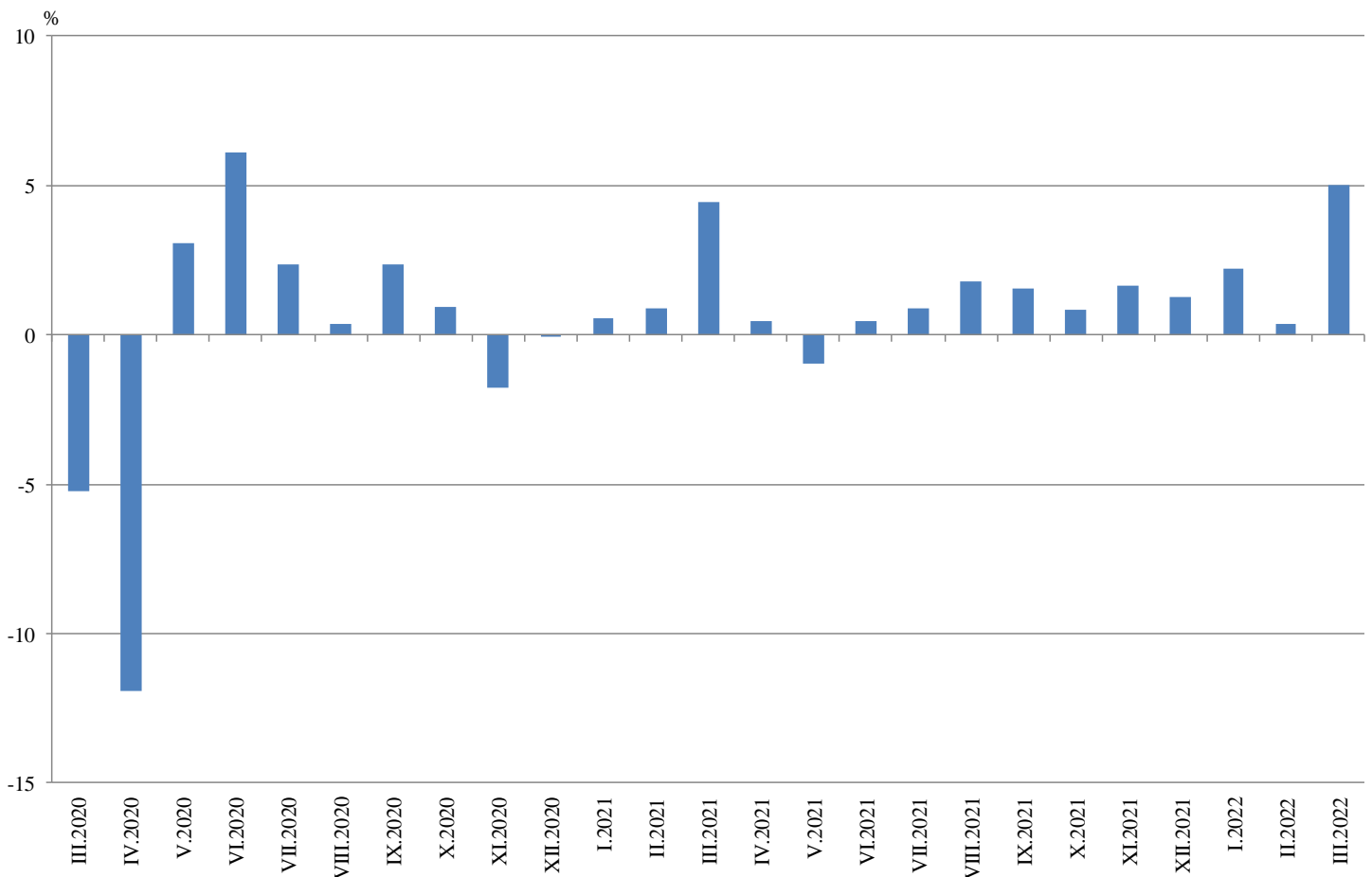
Monthly changes

In March 2022, compared to February 2022, the seasonally adjusted Industrial Production Index increased in the electricity, gas, steam and air conditioning supply - by 18.2%, in the mining and quarrying industry - by 6.5% and in the manufacturing - by 1.6%.

A major growth was seen in the other manufacturing - by 15.9%, in the manufacture of tobacco products - by 15.6%, in the repair and installation of machinery and equipment - by 13.2% and in the manufacture of wood and of products of wood and cork, except furniture; manufacture of articles of straw and plaiting materials - by 12.5%.

The most significant decrease in the manufacturing was observed in the manufacture of other transport equipment - by 12.7% and in the manufacture of leather and related products - by 5.1%.

Figure 2. Changes of Industrial Production Indices compared to the previous month (Seasonally adjusted)



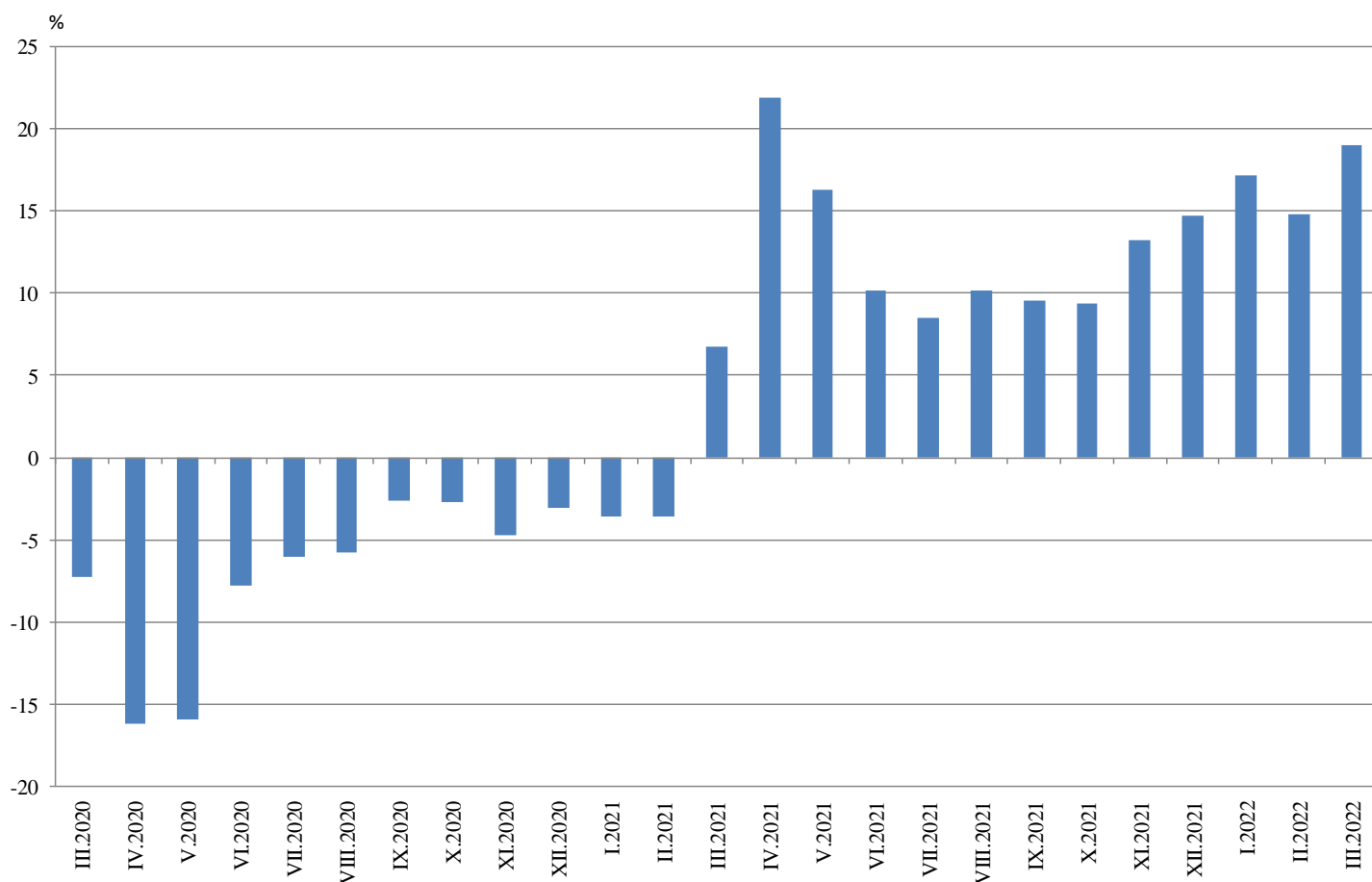
Annual changes

On an annual basis in March 2022, the Industrial Production Index calculated from calendar adjusted data rose in the electricity, gas, steam and air conditioning supply - by 51.1%, in the mining and quarrying industry - by 19.4%, and in the manufacturing - by 13.3%.

The most significant growth in the manufacturing compared to the same month of the previous year was registered in the other manufacturing - by 95.7%, in the manufacture of beverages - by 44.7%, in the manufacture of wood and of products of wood and cork, except furniture; manufacture of articles of straw and plaiting materials - by 36.7%, in the manufacture of computer, electronic and optical products - by 24.0% and in the manufacture of chemicals and chemical products - by 23.5%.

A major decrease was seen in the manufacture of basic pharmaceutical products and pharmaceutical preparations - by 9.3% and in the manufacture of other transport equipment - by 6.7%.

Figure 3. Changes of Industrial Production Indices compared to the same month of the previous year (Calendar adjusted)





Annex

Table 1

Changes of Industrial Production Indices compared to the previous month¹

(Per cent)

Economic activities	NACE.BG - 2008	2021			2022		
		X	XI	XII	I	II	III*
Industry	B_TO_E36	0.8	1.6	1.3	2.2	0.3	5.0
Mining and quarrying	B	-7.6	8.6	-0.7	10.0	-4.7	6.5
Mining of coal and lignite	B05	5.1	0.9	-2.7	15.6	2.0	13.1
Extraction of crude petroleum and natural gas	B06
Mining of metal ores	B07	-18.1	23.5	0.6	-5.8	-7.3	7.6
Other mining and quarrying	B08	-7.2	4.6	3.3	8.3	-3.2	2.0
Mining support service activities	B09
Manufacturing	C	-0.2	1.1	2.2	3.3	0.3	1.6
Manufacture of food products	C10	2.2	0.5	0.6	6.0	0.5	2.0
Manufacture of beverages	C11	3.7	4.8	-7.8	58.1	-10.6	6.0
Manufacture of tobacco products	C12	-23.3	5.7	-21.0	34.8	-13.8	15.6
Manufacture of textiles	C13	4.0	-8.7	12.1	-5.9	-4.1	0.2
Manufacture of wearing apparel	C14	3.5	2.6	2.2	2.8	-1.5	6.3
Manufacture of leather and related products	C15	2.1	3.1	1.0	4.4	-2.0	-5.1
Manufacture of wood and of products of wood and cork, except furniture; manufacture of articles of straw and plaiting materials	C16	-11.5	0.2	11.7	7.8	1.3	12.5
Manufacture of paper and paper products	C17	-2.5	-2.5	3.8	-3.3	-0.7	5.0
Printing and reproduction of recorded media	C18	4.6	2.2	-3.6	0.7	-7.4	5.1
Manufacture of coke and refined petroleum products	C19
Manufacture of chemicals and chemical products	C20	9.0	4.3	3.9	9.9	-4.4	-1.6
Manufacture of basic pharmaceutical products and pharmaceutical preparations	C21	4.8	0.7	0.2	-0.6	-7.0	1.2
Manufacture of rubber and plastic products	C22	-0.5	-1.2	4.8	5.5	-3.3	0.5
Manufacture of other non-metallic mineral products	C23	-0.4	4.7	-8.1	13.3	1.1	-1.6
Manufacture of basic metals	C24	9.9	-0.1	5.8	2.7	2.1	0.6
Manufacture of fabricated metal products, except machinery and equipment	C25	-5.4	0.4	1.0	8.9	-6.4	5.3
Manufacture of computer, electronic and optical products	C26	17.8	-3.6	-23.6	24.0	-6.0	4.8
Manufacture of electrical equipment	C27	-5.6	1.5	2.6	1.8	0.8	2.0
Manufacture of machinery and equipment n.e.c.	C28	4.0	0.4	0.3	6.0	-0.2	2.0
Manufacture of motor vehicles, trailers and semi-trailers	C29	-10.9	18.8	25.1	-11.8	9.3	4.3
Manufacture of other transport equipment	C30	-10.0	-3.3	17.2	-19.6	16.4	-12.7
Manufacture of furniture	C31	1.6	-1.8	-4.0	14.2	-1.5	-0.7
Other manufacturing	C32	-22.1	32.8	14.3	-10.9	3.4	15.9
Repair and installation of machinery and equipment	C33	-4.9	-18.5	24.9	-4.1	4.1	13.2
Electricity, gas, steam and air conditioning supply	D	10.1	-2.9	-4.0	-4.2	2.1	18.2
Electricity, gas, steam and air conditioning supply	D35	10.1	-2.9	-4.0	-4.2	2.1	18.2

¹ Seasonally adjusted.

* Preliminary data.

‘..’ - Confidential data.



Table 2

Changes of Industrial Production Indices compared to the same month of the previous year¹

(Per cent)

Economic activities	NACE.BG - 2008	2021			2022		
		X	XI	XII	I	II	III*
Industry	B_TO_E36	9.4	13.2	14.7	17.2	14.8	19.0
Mining and quarrying	B	18.9	41.6	22.9	53.5	17.4	19.4
Mining of coal and lignite	B05	81.8	98.8	76.4	128.0	108.7	81.7
Extraction of crude petroleum and natural gas	B06
Mining of metal ores	B07	-16.4	39.0	5.6	33.4	-15.7	-3.0
Other mining and quarrying	B08	24.7	9.2	1.3	10.8	10.8	3.3
Mining support service activities	B09
Manufacturing	C	3.1	5.7	9.5	12.1	12.1	13.3
Manufacture of food products	C10	7.7	8.4	11.1	9.5	12.4	13.4
Manufacture of beverages	C11	-35.5	-25.0	-17.2	38.6	30.8	44.7
Manufacture of tobacco products	C12	-3.4	-2.2	-33.9	27.1	-15.9	0.5
Manufacture of textiles	C13	22.0	16.8	28.1	9.0	1.4	9.7
Manufacture of wearing apparel	C14	2.4	12.4	16.9	13.3	8.0	21.6
Manufacture of leather and related products	C15	-9.6	2.0	15.9	23.3	16.9	-1.9
Manufacture of wood and of products of wood and cork, except furniture; manufacture of articles of straw and plaiting materials	C16	4.6	-1.1	13.0	16.8	30.8	36.7
Manufacture of paper and paper products	C17	16.0	6.3	19.6	7.7	6.6	8.8
Printing and reproduction of recorded media	C18	15.9	22.6	17.2	9.7	-1.0	-0.5
Manufacture of coke and refined petroleum products	C19
Manufacture of chemicals and chemical products	C20	14.4	20.1	26.1	38.8	25.0	23.5
Manufacture of basic pharmaceutical products and pharmaceutical preparations	C21	3.6	5.9	1.7	7.8	2.9	-9.3
Manufacture of rubber and plastic products	C22	-4.8	-4.3	-2.0	5.0	-1.4	2.2
Manufacture of other non-metallic mineral products	C23	10.8	11.8	7.6	18.2	19.8	14.7
Manufacture of basic metals	C24	1.0	-4.2	-6.2	4.7	8.0	3.5
Manufacture of fabricated metal products, except machinery and equipment	C25	-11.5	-2.8	0.0	-4.9	-2.1	3.9
Manufacture of computer, electronic and optical products	C26	71.0	50.4	16.2	28.9	26.1	24.0
Manufacture of electrical equipment	C27	2.3	8.1	6.3	3.8	8.5	6.8
Manufacture of machinery and equipment n.e.c.	C28	14.3	16.4	10.7	19.8	21.3	17.5
Manufacture of motor vehicles, trailers and semi-trailers	C29	-42.9	-26.8	-9.7	-10.6	1.0	4.0
Manufacture of other transport equipment	C30	14.1	8.3	64.9	-0.1	24.7	-6.7
Manufacture of furniture	C31	1.7	4.0	-1.3	7.6	8.9	9.7
Other manufacturing	C32	17.4	65.5	111.8	82.0	59.9	95.7
Repair and installation of machinery and equipment	C33	14.7	-17.7	31.3	12.6	9.2	17.0
Electricity, gas, steam and air conditioning supply	D	52.4	47.3	36.8	28.9	28.5	51.1
Electricity, gas, steam and air conditioning supply	D35	52.4	47.3	36.8	28.9	28.5	51.1

¹ Calendar adjusted.

* Preliminary data.

‘..’ - Confidential data.



Table 3

Industrial Production Indices
(Seasonally adjusted, 2015 = 100)

NACE.BG - 2008	2021										2022		
	III	IV	V	VI	VII	VIII	IX	X	XI	XII	I	II	III*
B_TO_E36	108.5	109.0	107.9	108.4	109.3	111.3	113.0	114.0	115.8	117.3	119.9	120.3	126.3
B	116.4	109.8	113.4	117.7	106.4	124.6	123.8	114.3	124.1	123.3	135.6	129.2	137.6
B05	87.1	84.9	78.6	84.8	74.3	97.5	109.1	114.6	115.6	112.5	130.0	132.6	150.0
B06
B07	131.0	120.5	120.7	144.4	119.7	140.2	133.0	108.9	134.6	135.4	127.5	118.2	127.1
B08	151.9	147.0	148.7	142.1	146.5	135.5	146.1	135.6	141.8	146.4	158.5	153.5	156.5
B09
C	116.5	115.9	114.8	115.1	115.2	116.4	117.2	117.0	118.3	121.0	125.0	125.4	127.5
C10	111.9	116.7	114.9	110.6	114.2	111.7	112.1	114.6	115.2	115.9	122.8	123.5	126.0
C11	63.4	66.8	64.6	62.0	66.9	64.4	62.2	64.5	67.6	62.3	98.6	88.2	93.4
C12	36.2	41.7	40.2	49.3	48.9	35.8	42.0	32.2	34.1	26.9	36.3	31.3	36.2
C13	105.8	111.4	105.5	111.2	110.2	125.3	121.8	126.6	115.6	129.7	122.0	117.0	117.1
C14	72.0	72.0	69.5	69.5	69.1	74.0	71.2	73.7	75.7	77.4	79.5	78.3	83.2
C15	70.8	74.1	70.1	69.2	71.9	69.6	70.5	72.0	74.2	75.0	78.2	76.6	72.7
C16	81.3	84.6	89.4	80.8	84.2	90.8	89.2	79.0	79.2	88.5	95.4	96.6	108.7
C17	100.1	98.7	96.5	103.1	106.2	108.4	109.7	107.0	104.3	108.3	104.8	104.1	109.2
C18	118.1	114.8	110.0	117.1	118.4	125.9	116.8	122.2	124.8	120.3	121.2	112.2	117.9
C19
C20	118.1	102.0	111.9	122.2	123.1	120.1	119.2	130.0	135.6	140.9	154.8	147.9	145.6
C21	125.5	111.9	116.8	111.0	118.9	132.0	117.9	123.5	124.4	124.7	123.9	115.3	116.6
C22	146.4	152.3	149.1	150.4	141.0	151.8	142.0	141.3	139.6	146.2	154.2	149.2	149.9
C23	115.3	111.4	120.4	118.0	118.2	123.8	122.2	121.7	127.4	117.1	132.7	134.2	132.0
C24	114.7	118.3	110.8	108.1	94.1	96.0	95.8	105.3	105.3	111.4	114.3	116.8	117.4
C25	121.5	134.6	132.4	120.8	133.6	109.1	122.2	115.7	116.1	117.2	127.7	119.5	125.8
C26	202.6	204.8	215.1	209.9	213.2	224.3	236.5	278.7	268.7	205.4	254.7	239.4	250.9
C27	148.6	158.8	154.2	150.4	147.0	148.9	153.6	145.0	147.1	150.9	153.7	154.9	157.9
C28	112.8	110.8	111.7	121.0	116.4	118.7	116.1	120.8	121.3	121.7	129.1	128.8	131.4
C29	150.3	133.6	114.3	134.5	119.3	144.9	116.0	103.4	122.8	153.7	135.6	148.2	154.6
C30	215.2	233.6	189.4	264.7	258.5	190.2	252.5	227.2	219.6	257.3	206.9	240.8	210.2
C31	106.1	105.2	104.1	106.4	107.3	102.2	108.3	110.0	108.0	103.7	118.4	116.7	115.8
C32	111.8	139.5	116.0	128.4	140.8	150.3	170.2	132.7	176.2	201.3	179.4	185.4	215.0
C33	115.0	107.4	112.0	105.8	101.0	108.1	121.2	115.2	93.9	117.3	112.5	117.2	132.6
D	78.9	81.4	79.2	78.8	87.8	88.9	96.1	105.9	102.8	98.7	94.6	96.5	114.1
35	78.9	81.4	79.2	78.8	87.8	88.9	96.1	105.9	102.8	98.7	94.6	96.5	114.1

* Preliminary data.

'..' - Confidential data.



Table 4

Industrial Production Indices
(Calendar adjusted, 2015 = 100)

NACE.BG - 2008	2019	2020	2021										2022		
	III	III	III	IV	V	VI	VII	VIII	IX	X	XI	XII	I	II	III*
B_TO_E36	112.7	104.5	111.6	105.4	102.4	110.1	112.2	106.6	113.2	119.0	122.8	119.7	116.1	114.6	132.9
B	97.3	107.6	112.1	101.8	106.0	113.8	103.6	122.3	129.3	127.6	134.1	133.6	132.6	123.8	133.8
B05	79.6	73.6	79.5	66.9	61.0	66.2	66.0	94.0	114.8	136.0	129.1	129.1	144.1	135.0	144.4
B06
B07	109.5	139.0	131.0	120.5	120.7	144.4	119.7	140.2	133.0	108.9	134.6	135.4	127.5	118.2	127.1
B08	101.0	100.9	143.2	143.8	152.7	153.1	156.4	143.2	158.6	150.0	159.7	148.5	110.8	120.4	148.0
B09
C	120.3	108.8	118.3	114.3	112.9	120.8	120.9	110.9	118.3	123.9	125.4	117.1	115.1	117.4	134.1
C10	105.3	113.8	111.9	110.5	113.0	113.7	115.7	112.1	117.8	125.9	122.2	120.0	109.9	109.1	126.9
C11	99.9	89.3	57.8	61.3	67.3	73.9	84.2	81.4	69.3	60.3	60.9	62.3	63.2	59.9	83.6
C12	40.5	37.0	36.2	44.8	46.6	60.2	62.7	32.8	44.7	35.2	38.5	26.9	20.6	18.9	36.4
C13	105.1	98.9	115.3	112.3	114.6	121.7	112.4	100.7	118.2	135.8	118.7	115.6	112.1	117.7	126.5
C14	88.9	66.1	70.5	64.5	61.4	72.9	79.7	72.3	69.7	74.5	76.5	74.3	86.5	78.6	85.7
C15	104.4	65.4	74.5	70.7	63.8	72.4	85.7	56.9	67.5	77.1	80.4	69.9	84.0	77.5	73.1
C16	79.8	69.7	79.0	84.0	91.3	85.9	90.5	90.7	94.2	84.7	84.2	84.2	81.0	84.5	108.0
C17	104.2	101.5	104.0	96.8	95.4	105.1	107.2	107.6	109.3	110.0	105.5	105.1	103.7	101.2	113.1
C18	121.8	100.5	119.0	113.1	109.9	120.2	119.2	120.1	112.8	130.8	142.3	122.2	108.3	102.6	118.5
C19
C20	132.0	132.5	128.4	102.0	110.8	127.0	126.7	116.1	117.3	133.1	137.9	138.1	145.5	141.1	158.6
C21	125.5	135.5	140.5	110.2	113.8	113.9	119.2	121.4	112.4	124.6	137.9	130.1	121.4	101.5	127.4
C22	148.8	140.3	153.5	147.5	145.4	156.2	148.1	147.4	144.8	155.4	144.5	128.6	142.6	143.4	156.9
C23	120.5	104.4	112.5	114.4	129.4	127.5	128.8	130.8	131.3	136.1	138.8	103.1	95.1	109.3	129.0
C24	121.3	114.3	123.3	123.3	106.6	104.7	95.7	86.7	86.4	108.8	112.7	107.2	120.6	117.3	127.7
C25	123.3	120.0	123.4	130.9	127.7	128.1	143.8	105.7	125.7	119.9	127.1	128.0	97.2	109.1	128.3
C26	153.5	142.9	211.7	198.0	205.3	216.4	213.6	197.0	226.8	311.5	300.8	207.7	245.8	225.1	262.4
C27	134.3	126.8	156.5	156.8	147.2	157.6	150.8	134.2	158.8	157.6	159.4	133.6	146.2	152.2	167.1
C28	133.4	106.0	117.8	114.2	108.0	129.2	121.2	103.2	115.7	128.0	130.0	115.9	119.6	124.0	138.3
C29	155.3	129.6	159.9	134.3	112.4	139.6	115.2	125.9	114.9	109.1	134.4	138.6	136.0	151.9	166.3
C30	193.5	193.7	253.8	258.3	188.8	287.0	250.0	145.4	224.8	225.6	230.8	217.6	185.8	259.8	236.7
C31	106.0	81.1	107.4	100.3	100.5	111.2	112.8	99.6	111.5	120.1	116.6	100.5	106.8	107.9	117.7
C32	153.6	81.3	112.3	134.7	111.4	143.1	142.7	149.6	181.5	142.5	192.8	182.8	159.9	166.9	219.7
C33	123.9	138.7	116.0	96.5	103.7	109.1	103.7	104.8	127.4	120.4	104.9	156.3	81.0	100.7	135.7
D	92.1	89.0	87.4	71.8	62.8	66.9	81.8	82.4	86.7	99.5	111.4	125.2	117.3	100.9	132.0
D35	92.1	89.0	87.4	71.8	62.8	66.9	81.8	82.4	86.7	99.5	111.4	125.2	117.3	100.9	132.0

* Preliminary data.

‘..’ - Confidential data.