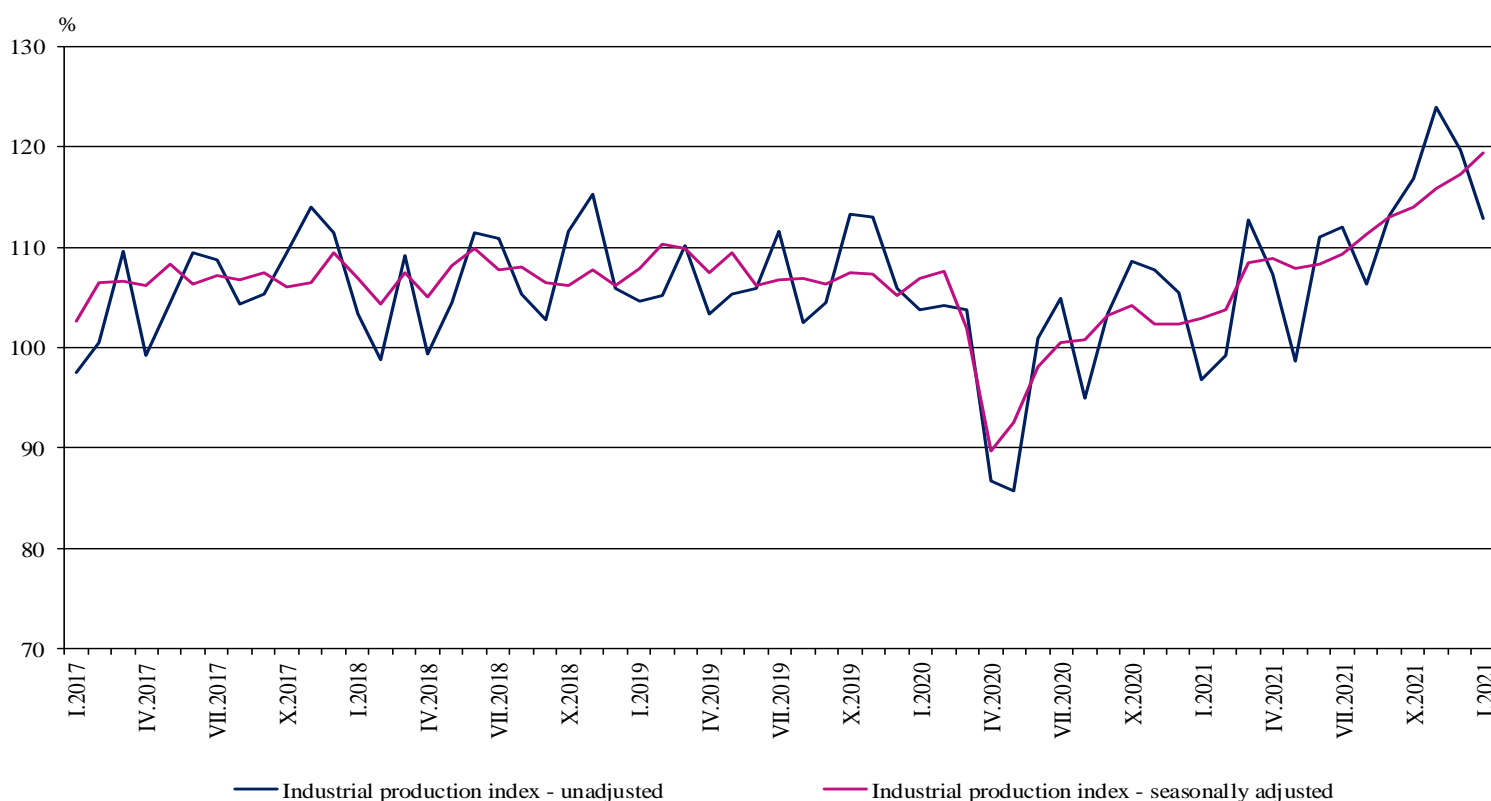


INDUSTRIAL PRODUCTION INDICES IN JANUARY 2022¹

According to the preliminary data in January 2022 the Industrial Production Index², seasonally adjusted³, increased by 1.9% compared to December 2021.

In January 2022, the calendar adjusted⁴ Industrial Production Index rose by 16.5% in comparison with the same month of 2021.

Figure1. Industrial Production Indices (2015 = 100)



¹ January 2022 data are preliminary. The final data on Industrial Production and Turnover Indices for December 2021 can be found on the NSI website: <http://www.nsi.bg/en>.

² The Monthly Industrial Production and Industrial Turnover Indices measure changes in production and turnover values of industrial enterprises. This information can be used to assess the current economic development and for short-term forecasts. Indices do not measure the actual production level; they aim to measure the average change in the value of production between two points in time. Indices are compiled based on information collected through a representative sampling survey on industrial enterprises. The sample covers enterprises with an annual turnover of more than 97% of the total turnover in the industry. Industrial production indices are calculated at constant base year that is to say they are weighted with the structure of the value added at factor costs in the base year.

³ Seasonal adjustment is a statistical method, which eliminates the seasonal component of the time series.

⁴ Calendar adjustment is an adjustment for variations caused by calendar effects, different number of calendar and working days in the months, national holidays and outliers (for example, the presence of more non-working days in May could contribute to the decline in production in some activities).

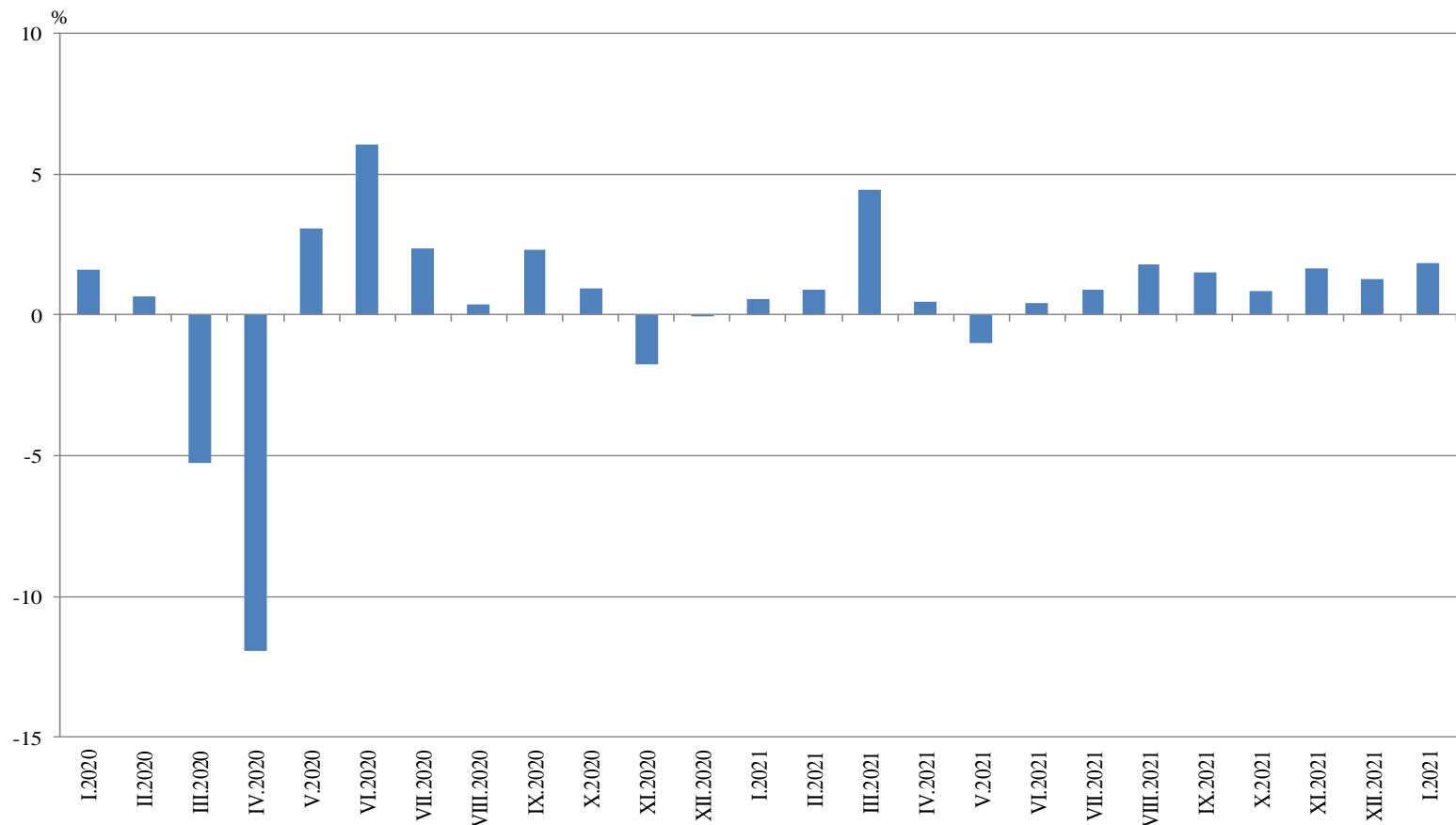
Monthly changes

In January 2022, compared to December 2021, the seasonally adjusted Industrial Production Index rose in the mining and quarrying industry by 10.3% and in the manufacturing by 2.5%, while the production decreased in the electricity, gas, steam and air conditioning supply by 3.9%.

The most significant increase in the manufacturing was seen in the manufacture of tobacco products by 33.2%, in the manufacture of computer, electronic and optical products by 24.3%, in the manufacture of beverages by 14.3% and in the manufacture of furniture by 13.7%.

A major decrease was observed in the manufacture of other transport equipment by 19.8%, in the other manufacturing by 11.0% and in the manufacture of motor vehicles, trailers and semi-trailers by 10.5%.

**Figure 2. Changes of Industrial Production Indices compared to the previous month
(Seasonally adjusted)**



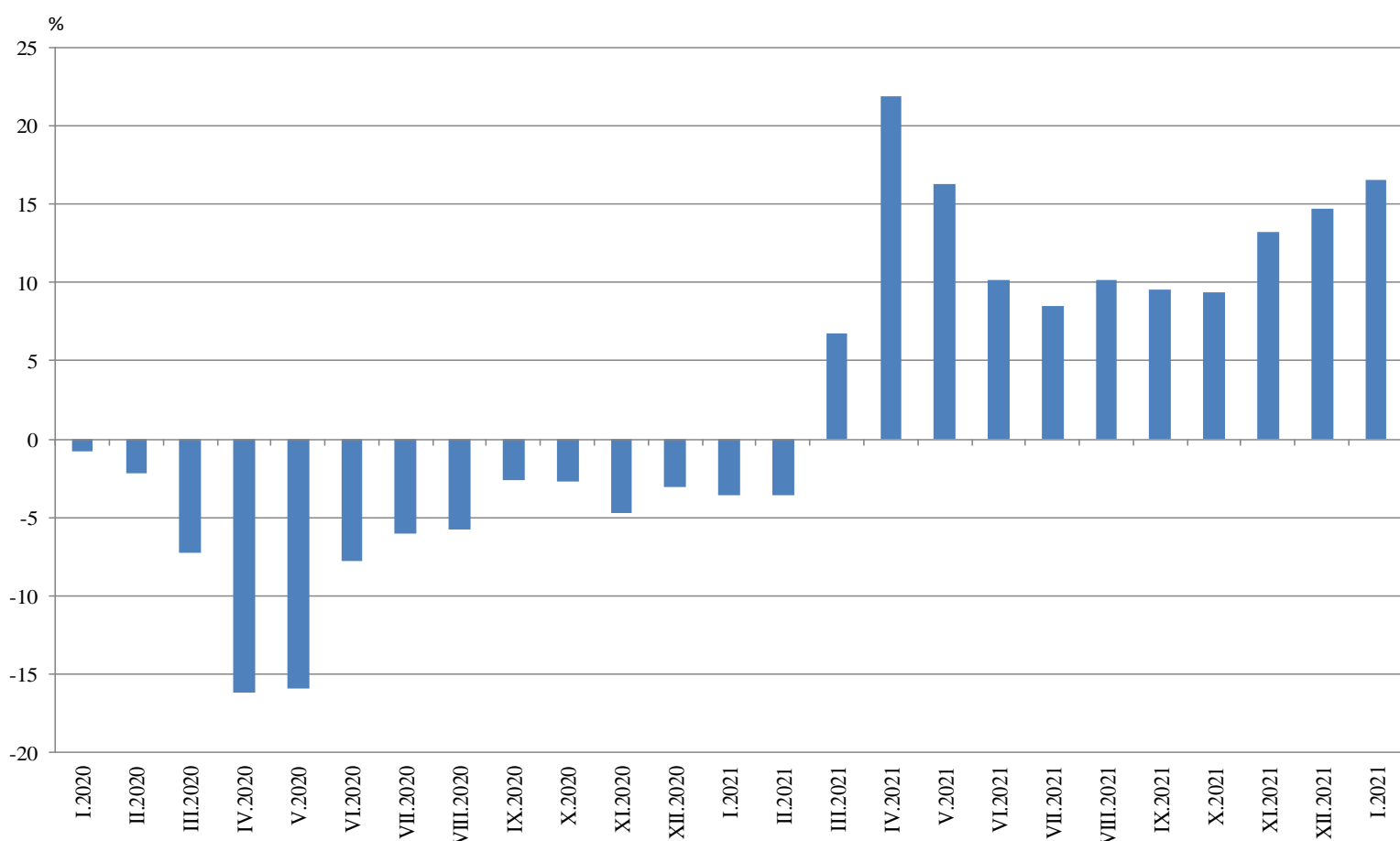
Annual changes

On an annual basis in January 2021, Industrial Production Index calculated from calendar day adjusted data rose in the mining and quarrying industry by 53.6%, in the electricity, gas, steam and air conditioning supply by 29.6% and in the manufacturing by 11.0%.

The most significant growth in the manufacturing compared to the same month of the previous year was registered in the other manufacturing by 81.9%, in the manufacture of computer, electronic and optical products by 28.9%, in the manufacture of leather and related products by 26.3%, in the manufacture of machinery and equipment n.e.c. by 25.7%, and in the manufacture of chemicals and chemical products by 25.3%.

A major decrease was seen in the manufacture of motor vehicles, trailers and semi-trailers by 8.1% and in the manufacture of fabricated metal products, except machinery and equipment by 5.3%.

Figure 3. Changes of Industrial Production Indices compared to the same month of the previous year (Calendar adjusted)





Annex

Table 1

Changes of Industrial Production Indices compared to the previous month¹

(Percent)

Economic activities	NACE.BG - 2008	2021					2022
		VIII	IX	X	XI	XII	I*
Industry	B_TO_E36	1.8	1.5	0.8	1.6	1.3	1.9
Mining and quarrying	B	17.1	-0.7	-7.6	8.6	-0.7	10.3
Mining of coal and lignite	B05	31.2	11.8	5.1	0.9	-2.7	15.3
Extraction of crude petroleum and natural gas	B06
Mining of metal ores	B07	17.2	-5.1	-18.1	23.5	0.6	-5.8
Other mining and quarrying	B08	-7.6	7.9	-7.2	4.6	3.3	9.7
Mining support service activities	B09
Manufacturing	C	1.0	0.8	-0.2	1.1	2.2	2.5
Manufacture of food products	C10	-2.2	0.4	2.2	0.5	0.6	5.2
Manufacture of beverages	C11	-3.8	-3.4	3.7	4.8	-7.8	14.3
Manufacture of tobacco products	C12	-26.8	17.3	-23.3	5.7	-21.0	33.2
Manufacture of textiles	C13	13.7	-2.7	4.0	-8.7	12.1	-4.3
Manufacture of wearing apparel	C14	7.0	-3.8	3.5	2.6	2.2	3.0
Manufacture of leather and related products	C15	-3.2	1.3	2.1	3.1	1.0	4.6
Manufacture of wood and of products of wood and cork, except furniture; manufacture of articles of straw and plaiting materials	C16	7.8	-1.7	-11.5	0.2	11.7	6.8
Manufacture of paper and paper products	C17	2.0	1.3	-2.5	-2.5	3.8	-2.9
Printing and reproduction of recorded media	C18	6.3	-7.2	4.6	2.2	-3.6	0.4
Manufacture of coke and refined petroleum products	C19
Manufacture of chemicals and chemical products	C20	-2.4	-0.8	9.0	4.3	3.9	-0.2
Manufacture of basic pharmaceutical products and pharmaceutical preparations	C21	11.0	-10.7	4.8	0.7	0.2	0.0
Manufacture of rubber and plastic products	C22	7.7	-6.5	-0.5	-1.2	4.8	5.7
Manufacture of other non-metallic mineral products	C23	4.8	-1.3	-0.4	4.7	-8.1	10.3
Manufacture of basic metals	C24	2.1	-0.2	9.9	-0.1	5.8	1.8
Manufacture of fabricated metal products, except machinery and equipment	C25	-18.4	12.1	-5.4	0.4	1.0	8.5
Manufacture of computer, electronic and optical products	C26	5.2	5.5	17.8	-3.6	-23.6	24.3
Manufacture of electrical equipment	C27	1.3	3.2	-5.6	1.5	2.6	1.4
Manufacture of machinery and equipment n.e.c.	C28	2.0	-2.2	4.0	0.4	0.3	9.9
Manufacture of motor vehicles, trailers and semi-trailers	C29	21.4	-20.0	-10.9	18.8	25.1	-10.5
Manufacture of other transport equipment	C30	-26.4	32.8	-10.0	-3.3	17.2	-19.8
Manufacture of furniture	C31	-4.7	6.0	1.6	-1.8	-4.0	13.7
Other manufacturing	C32	6.8	13.2	-22.1	32.8	14.3	-11.0
Repair and installation of machinery and equipment	C33	7.0	12.2	-4.9	-18.5	24.9	-2.8
Electricity, gas, steam and air conditioning supply	D	1.3	8.1	10.1	-2.9	-4.0	-3.9
Electricity, gas, steam and air conditioning supply	D35	1.3	8.1	10.1	-2.9	-4.0	-3.9

¹ Seasonally adjusted.

* Preliminary data.

„..“ - Confidential data.



Table 2

Changes of Industrial Production Indices compared to the same month of the previous year¹

(Per cent)

Economic activities	NACE.BG - 2008	2021					2022
		VIII	IX	X	XI	XII	I*
Industry	B_TO_E36	10.1	9.5	9.4	13.2	14.7	16.5
Mining and quarrying	B	13.8	20.0	18.9	41.6	22.9	53.6
Mining of coal and lignite	B05	38.7	75.7	81.8	98.8	76.4	128.0
Extraction of crude petroleum and natural gas	B06
Mining of metal ores	B07	4.7	-5.7	-16.4	39.0	5.6	33.4
Other mining and quarrying	B08	21.6	35.2	24.7	9.2	1.3	12.7
Mining support service activities	B09
Manufacturing	C	8.2	5.7	3.1	5.7	9.5	11.0
Manufacture of food products	C10	12.2	6.4	7.7	8.4	11.1	8.5
Manufacture of beverages	C11	-34.1	-39.9	-35.5	-25.0	-17.2	8.2
Manufacture of tobacco products	C12	0.4	37.0	-3.4	-2.2	-33.9	24.4
Manufacture of textiles	C13	31.4	26.4	22.0	16.8	28.1	10.7
Manufacture of wearing apparel	C14	4.4	-1.2	2.4	12.4	16.9	13.3
Manufacture of leather and related products	C15	0.8	-2.7	-9.6	2.0	15.9	26.3
Manufacture of wood and of products of wood and cork, except furniture; manufacture of articles of straw and plaiting materials	C16	25.8	20.7	4.6	-1.1	13.0	15.3
Manufacture of paper and paper products	C17	25.9	29.0	16.0	6.3	19.6	8.1
Printing and reproduction of recorded media	C18	24.9	12.2	15.9	22.6	17.2	8.8
Manufacture of coke and refined petroleum products	C19
Manufacture of chemicals and chemical products	C20	2.9	8.5	14.4	20.1	26.1	25.3
Manufacture of basic pharmaceutical products and pharmaceutical preparations	C21	26.1	2.2	3.6	5.9	1.7	6.8
Manufacture of rubber and plastic products	C22	9.2	-3.7	-4.8	-4.3	-2.0	5.1
Manufacture of other non-metallic mineral products	C23	15.8	9.2	10.8	11.8	7.6	14.9
Manufacture of basic metals	C24	-21.7	-22.2	1.0	-4.2	-6.2	4.4
Manufacture of fabricated metal products, except machinery and equipment	C25	4.0	-2.7	-11.5	-2.8	0.0	-5.3
Manufacture of computer, electronic and optical products	C26	52.8	58.4	71.0	50.4	16.2	28.9
Manufacture of electrical equipment	C27	12.5	15.5	2.3	8.1	6.3	3.4
Manufacture of machinery and equipment n.e.c.	C28	19.1	7.3	14.3	16.4	10.7	25.7
Manufacture of motor vehicles, trailers and semi-trailers	C29	-2.3	-25.3	-42.9	-26.8	-9.7	-8.1
Manufacture of other transport equipment	C30	-11.3	40.9	14.1	8.3	64.9	-0.1
Manufacture of furniture	C31	-5.9	1.8	1.7	4.0	-1.3	7.4
Other manufacturing	C32	40.2	49.8	17.4	65.5	111.8	81.9
Repair and installation of machinery and equipment	C33	12.9	30.1	14.7	-17.7	31.3	14.3
Electricity, gas, steam and air conditioning supply	D	19.4	29.4	52.4	47.3	36.8	29.6
Electricity, gas, steam and air conditioning supply	D35	19.4	29.4	52.4	47.3	36.8	29.6

¹ Calendar adjusted.

* Preliminary data.

„...“ - Confidential data.



Table 3

Industrial Production Indices
(Seasonally adjusted, 2015 = 100)

NACE.BG - 2008	2021												2022
	I	II	III	IV	V	VI	VII	VIII	IX	X	XI	XII	I*
B_TO_E36	102.9	103.8	108.5	109.0	107.9	108.4	109.3	111.3	113.0	114.0	115.8	117.3	119.5
B	88.5	110.7	116.4	109.8	113.4	117.7	106.4	124.6	123.8	114.3	124.1	123.3	136.0
B05	48.9	62.6	87.1	84.9	78.6	84.8	74.3	97.5	109.1	114.6	115.6	112.5	129.8
B06
B07	95.6	140.2	131.0	120.5	120.7	144.4	119.7	140.2	133.0	108.9	134.6	135.4	127.5
B08	142.8	138.3	151.9	147.0	148.7	142.1	146.5	135.5	146.1	135.6	141.8	146.4	160.6
B09
C	112.3	111.7	116.5	115.9	114.8	115.1	115.2	116.4	117.2	117.0	118.3	121.0	124.0
C10	112.6	110.3	111.9	116.7	114.9	110.6	114.2	111.7	112.1	114.6	115.2	115.9	121.9
C11	66.6	63.3	63.4	66.8	64.6	62.0	66.9	64.4	62.2	64.5	67.6	62.3	71.3
C12	28.8	36.1	36.2	41.7	40.2	49.3	48.9	35.8	42.0	32.2	34.1	26.9	35.9
C13	112.3	114.4	105.8	111.4	105.5	111.2	110.2	125.3	121.8	126.6	115.6	129.7	124.1
C14	70.8	71.2	72.0	72.0	69.5	69.5	69.1	74.0	71.2	73.7	75.7	77.4	79.7
C15	68.4	69.5	70.8	74.1	70.1	69.2	71.9	69.6	70.5	72.0	74.2	75.0	78.4
C16	82.1	74.0	81.3	84.6	89.4	80.8	84.2	90.8	89.2	79.0	79.2	88.5	94.5
C17	97.2	96.7	100.1	98.7	96.5	103.1	106.2	108.4	109.7	107.0	104.3	108.3	105.1
C18	111.0	111.1	118.1	114.8	110.0	117.1	118.4	125.9	116.8	122.2	124.8	120.3	120.8
C19
C20	112.3	118.9	118.1	102.0	111.9	122.2	123.1	120.1	119.2	130.0	135.6	140.9	140.7
C21	117.3	110.8	125.5	111.9	116.8	111.0	118.9	132.0	117.9	123.5	124.4	124.7	124.7
C22	147.8	151.1	146.4	152.3	149.1	150.4	141.0	151.8	142.0	141.3	139.6	146.2	154.5
C23	112.5	112.6	115.3	111.4	120.4	118.0	118.2	123.8	122.2	121.7	127.4	117.1	129.2
C24	109.2	110.0	114.7	118.3	110.8	108.1	94.1	96.0	95.8	105.3	105.3	111.4	113.4
C25	134.5	121.7	121.5	134.6	132.4	120.8	133.6	109.1	122.2	115.7	116.1	117.2	127.2
C26	198.5	188.1	202.6	204.8	215.1	209.9	213.2	224.3	236.5	278.7	268.7	205.4	255.2
C27	148.3	142.6	148.6	158.8	154.2	150.4	147.0	148.9	153.6	145.0	147.1	150.9	153.1
C28	107.0	106.3	112.8	110.8	111.7	121.0	116.4	118.7	116.1	120.8	121.3	121.7	133.8
C29	150.0	148.4	150.3	133.6	114.3	134.5	119.3	144.9	116.0	103.4	122.8	153.7	137.6
C30	202.8	196.4	215.2	233.6	189.4	264.7	258.5	190.2	252.5	227.2	219.6	257.3	206.4
C31	110.4	108.1	106.1	105.2	104.1	106.4	107.3	102.2	108.3	110.0	108.0	103.7	117.9
C32	98.5	115.4	111.8	139.5	116.0	128.4	140.8	150.3	170.2	132.7	176.2	201.3	179.2
C33	99.7	107.4	115.0	107.4	112.0	105.8	101.0	108.1	121.2	115.2	93.9	117.3	114.0
D	73.3	72.9	78.9	81.4	79.2	78.8	87.8	88.9	96.1	105.9	102.8	98.7	94.9
35	73.3	72.9	78.9	81.4	79.2	78.8	87.8	88.9	96.1	105.9	102.8	98.7	94.9

* Preliminary data.

„..“ - Confidential data.



Table 4

Industrial Production Indices
(Calendar adjusted, 2015 = 100)

NACE.BG - 2008	2019	2020	2021												2022
	I	I	I	II	III	IV	V	VI	VII	VIII	IX	X	XI	XII	I*
B_TO_E36	103.6	102.8	99.1	99.8	111.6	105.4	102.4	110.1	112.2	106.6	113.2	119.0	122.8	119.7	115.4
B	114.8	101.6	86.4	105.5	112.1	101.8	106.0	113.8	103.6	122.3	129.3	127.6	134.1	133.6	132.7
B05	128.9	81.5	63.2	64.7	79.5	66.9	61.0	66.2	66.0	94.0	114.8	136.0	129.1	129.1	144.1
B06
B07	123.1	127.4	95.6	140.2	131.0	120.5	120.7	144.4	119.7	140.2	133.0	108.9	134.6	135.4	127.5
B08	76.5	87.5	100.0	108.7	143.2	143.8	152.7	153.1	156.4	143.2	158.6	150.0	159.7	148.5	112.7
B09
C	102.4	105.2	102.6	104.7	118.3	114.3	112.9	120.8	120.9	110.9	118.3	123.9	125.4	117.1	113.9
C10	97.6	103.1	100.4	97.1	111.9	110.5	113.0	113.7	115.7	112.1	117.8	125.9	122.2	120.0	108.9
C11	63.4	76.8	45.6	45.8	57.8	61.3	67.3	73.9	84.2	81.4	69.3	60.3	60.9	62.3	49.3
C12	19.2	24.5	16.3	22.5	36.2	44.8	46.6	60.2	62.7	32.8	44.7	35.2	38.5	26.9	20.2
C13	88.3	97.8	102.8	116.1	115.3	112.3	114.6	121.7	112.4	100.7	118.2	135.8	118.7	115.6	113.8
C14	91.3	82.6	76.3	72.8	70.5	64.5	61.4	72.9	79.7	72.3	69.7	74.5	76.5	74.3	86.5
C15	93.0	94.3	68.1	66.4	74.5	70.7	63.8	72.4	85.7	56.9	67.5	77.1	80.4	69.9	86.0
C16	65.1	70.1	69.3	64.6	79.0	84.0	91.3	85.9	90.5	90.7	94.2	84.7	84.2	84.2	80.0
C17	102.5	93.6	96.3	95.0	104.0	96.8	95.4	105.1	107.2	107.6	109.3	110.0	105.5	105.1	104.1
C18	99.4	98.7	98.7	103.6	119.0	113.1	109.9	120.2	119.2	120.1	112.8	130.8	142.3	122.2	107.4
C19
C20	109.6	112.7	104.8	112.9	128.4	102.0	110.8	127.0	126.7	116.1	117.3	133.1	137.9	138.1	131.3
C21	112.3	111.5	112.5	98.6	140.5	110.2	113.8	113.9	119.2	121.4	112.4	124.6	137.9	130.1	120.1
C22	122.5	121.3	135.9	145.4	153.5	147.5	145.4	156.2	148.1	147.4	144.8	155.4	144.5	128.6	142.8
C23	86.2	89.5	80.5	91.2	112.5	114.4	129.4	127.5	128.8	130.8	131.3	136.1	138.8	103.1	92.5
C24	108.9	117.3	115.2	108.6	123.3	123.3	106.6	104.7	95.7	86.7	86.4	108.8	112.7	107.2	120.3
C25	89.9	94.6	102.2	111.4	123.4	130.9	127.7	128.1	143.8	105.7	125.7	119.9	127.1	128.0	96.7
C26	132.9	143.1	190.7	178.5	211.7	198.0	205.3	216.4	213.6	197.0	226.8	311.5	300.8	207.7	245.8
C27	116.7	116.7	140.9	140.3	156.5	156.8	147.2	157.6	150.8	134.2	158.8	157.6	159.4	133.6	145.7
C28	115.1	107.0	99.8	102.2	117.8	114.2	108.0	129.2	121.2	103.2	115.7	128.0	130.0	115.9	125.4
C29	139.5	157.8	152.0	150.4	159.9	134.3	112.4	139.6	115.2	125.9	114.9	109.1	134.4	138.6	139.7
C30	146.8	179.3	185.9	208.4	253.8	258.3	188.8	287.0	250.0	145.4	224.8	225.6	230.8	217.6	185.8
C31	91.3	91.8	99.3	99.0	107.4	100.3	100.5	111.2	112.8	99.6	111.5	120.1	116.6	100.5	106.7
C32	151.2	160.6	87.8	104.4	112.3	134.7	111.4	143.1	142.7	149.6	181.5	142.5	192.8	182.8	159.7
C33	100.3	101.4	71.9	92.2	116.0	96.5	103.7	109.1	103.7	104.8	127.4	120.4	104.9	156.3	82.2
D	105.6	94.8	91.0	78.5	87.4	71.8	62.8	66.9	81.8	82.4	86.7	99.5	111.4	125.2	117.9
D35	105.6	94.8	91.0	78.5	87.4	71.8	62.8	66.9	81.8	82.4	86.7	99.5	111.4	125.2	117.9

* Preliminary data.

„...“ - Confidential data.