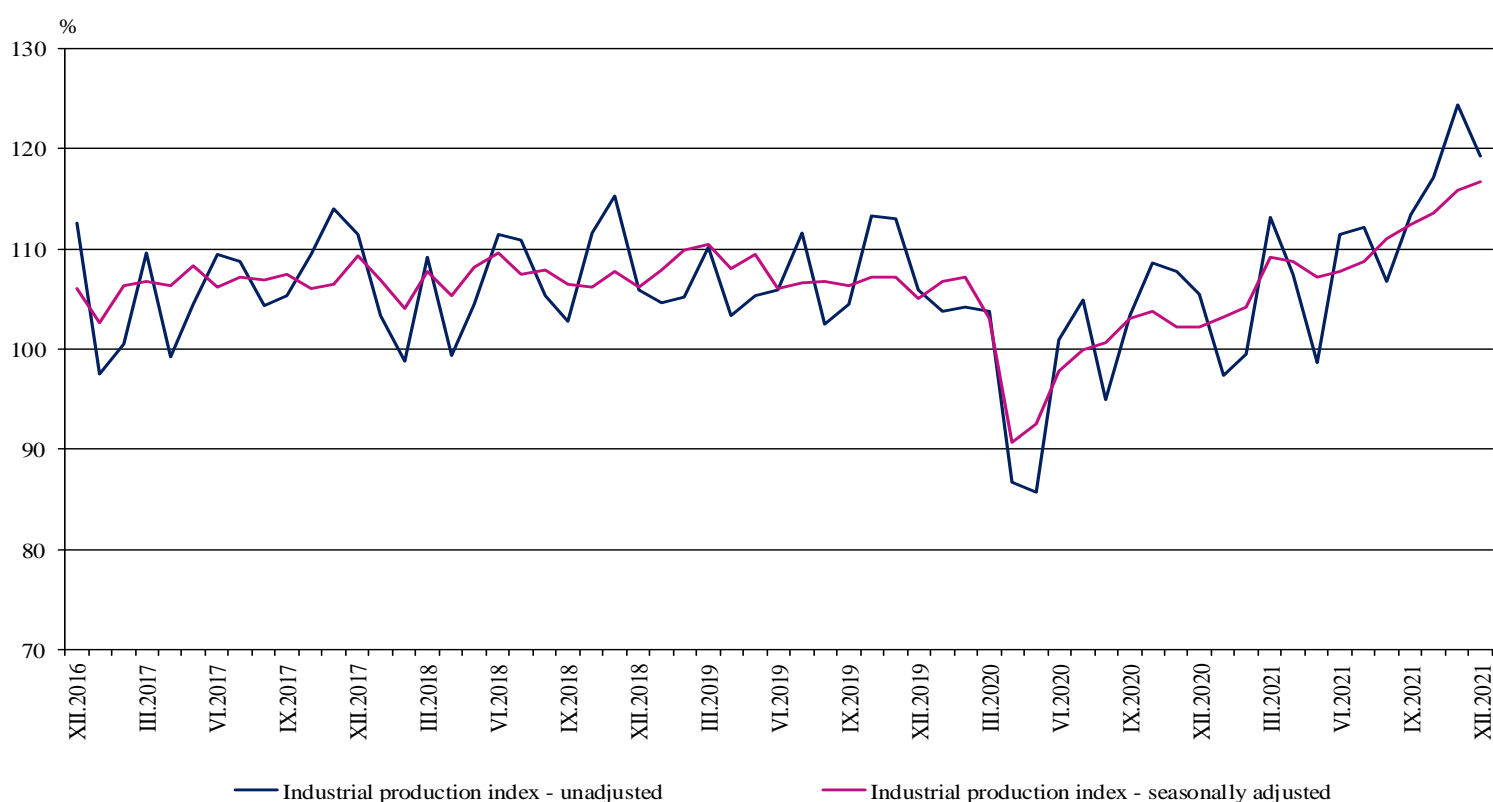


INDUSTRIAL PRODUCTION INDICES IN DECEMBER 2021¹

According to the preliminary data in December 2021, the Industrial Production Index², seasonally adjusted³, increased by 0.7% compared to November 2021.

In December 2021, the calendar adjusted⁴ Industrial Production Index rose by 14.3% in comparison with the same month of 2020.

Figure 1. Industrial Production Indices (2015 = 100)



¹ December 2021 data are preliminary. The final data on Industrial Production and Turnover Indices for November 2021 can be found on the NSI website: <http://www.nsi.bg/en>.

² The Monthly Industrial Production and Industrial Turnover Indices measure changes in production and turnover values of industrial enterprises. This information can be used to assess the current economic development and for short-term forecasts. Indices do not measure the actual production level; they aim to measure the average change in the value of production between two points in time. Indices are compiled based on information collected through a representative sampling survey on industrial enterprises. The sample covers enterprises with an annual turnover of more than 97% of the total turnover in the industry. Industrial production indices are calculated at constant base year that is to say they are weighted with the structure of the value added at factor costs in the base year.

³ Seasonal adjustment is a statistical method, which eliminates the seasonal component of the time series.

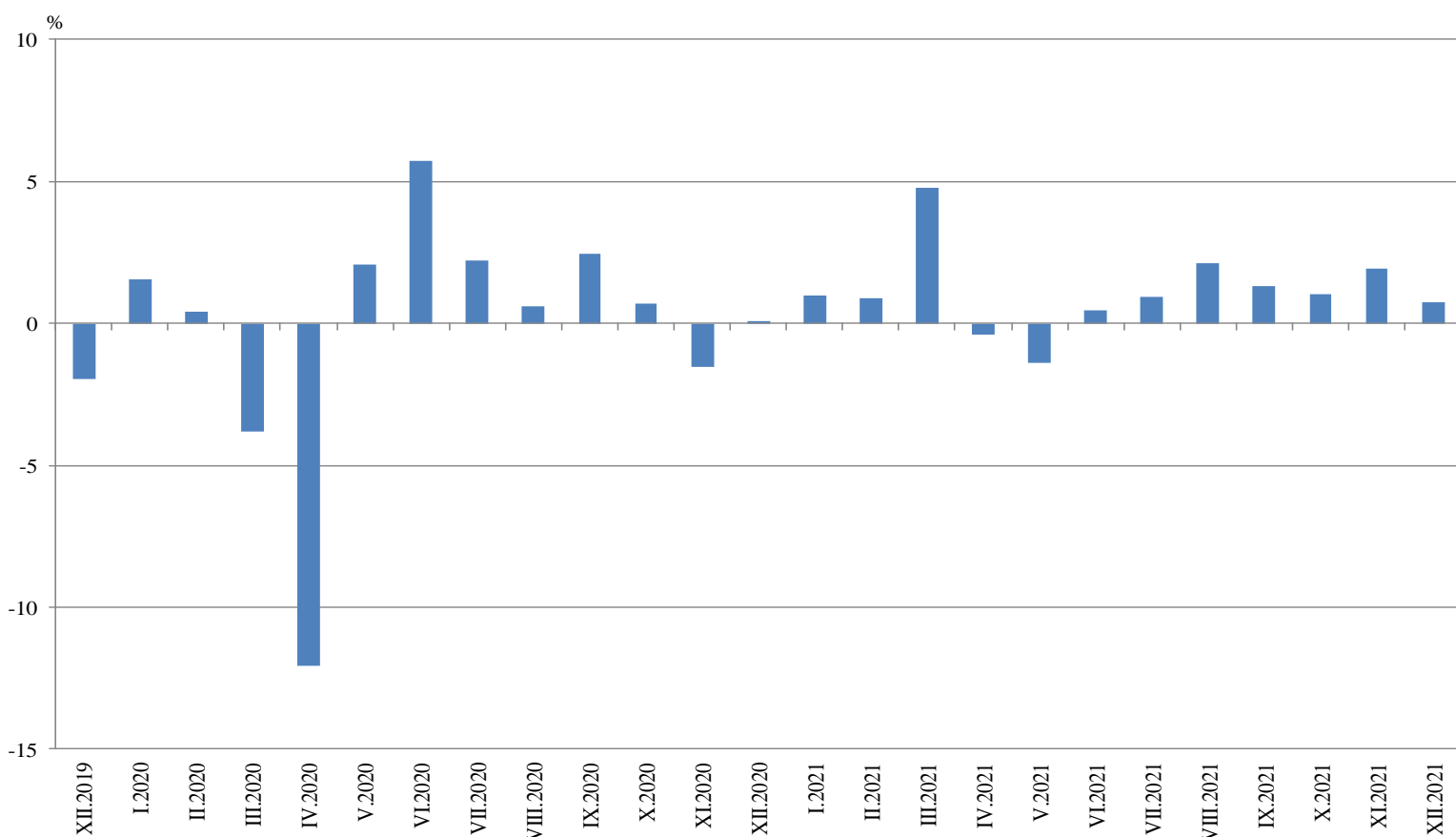
⁴ Calendar adjustment is an adjustment for variations caused by calendar effects, different number of calendar and working days in the months, national holidays and outliers (for example, the presence of more non-working days in May could contribute to the decline in production in some activities).

Monthly changes

In December 2021, compared to November 2021, the seasonally adjusted Industrial Production Index rose in the manufacturing by 1.6%, and decreased in the electricity, gas, steam and air conditioning supply by 2.4% and in the mining and quarrying industry by 0.8%.

The most significant increase in the manufacturing was seen in the manufacture of motor vehicles, trailers and semi-trailers by 25.1%, in the repair and installation of machinery and equipment by 21.2%, in the manufacture of other transport equipment by 16.6% and in the other manufacturing by 13.7%. A major decrease was seen in the manufacture of computer, electronic and optical products by 28.2%, in the manufacture of tobacco products by 18.6% and in the manufacture of other non-metallic mineral products by 8.7%.

**Figure 2. Changes of Industrial Production Indices compared to the previous month
(Seasonally adjusted)**

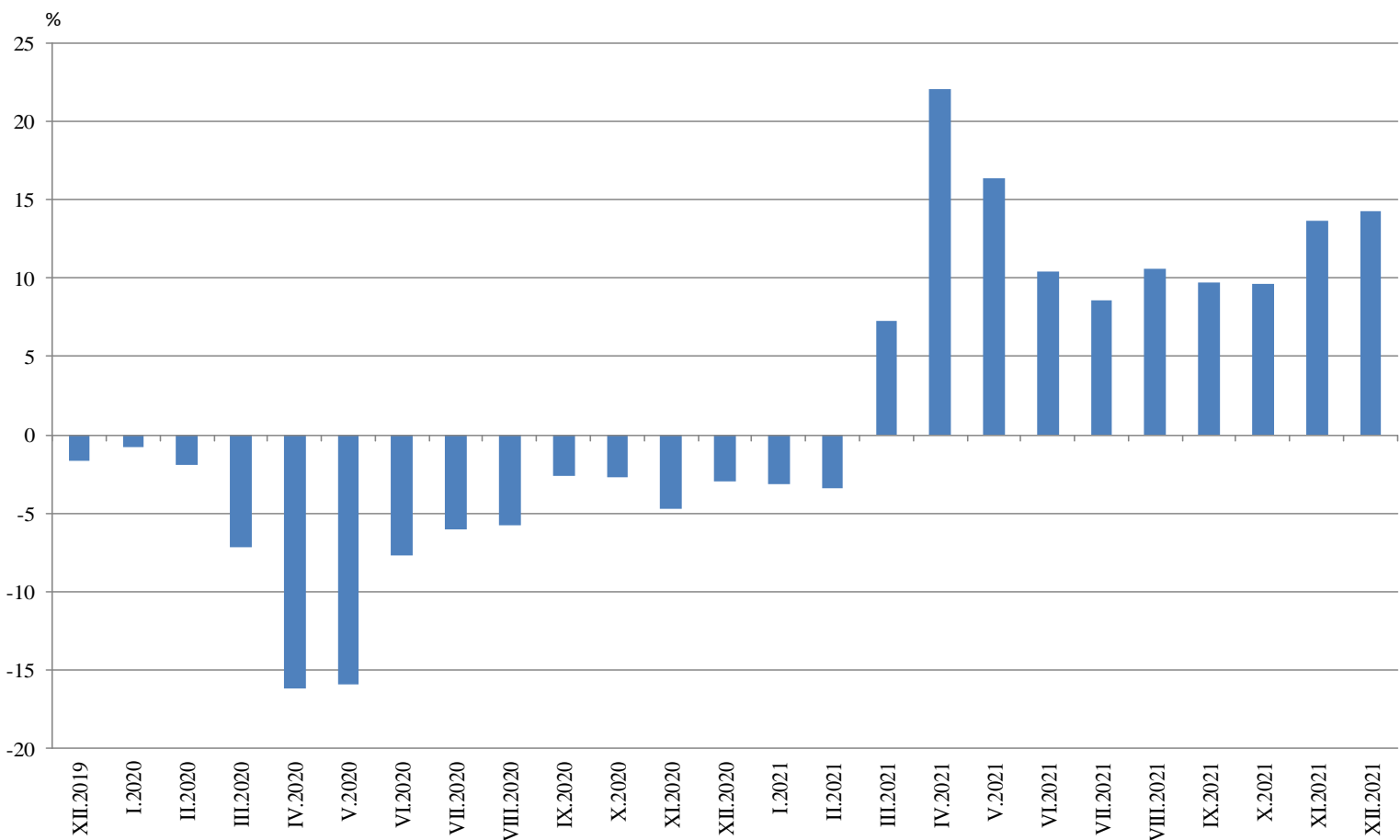


Annual changes

On an annual basis in December 2021, Industrial Production Index calculated from calendar day adjusted data rose in the electricity, gas, steam and air conditioning supply by 37.0%, in the mining and quarrying industry by 21.4% and in the manufacturing by 8.9%.

The most significant increase in the manufacturing compared to the same month of the previous year was registered in the other manufacturing by 111.4%, in the manufacture of other transport equipment by 68.6%, in the repair and installation of machinery and equipment by 29.0% and in the manufacture of textiles by 28.2%. A major decrease was seen in the manufacture of tobacco products by 31.3%, in the manufacture of beverages by 17.7% and in the manufacture of motor vehicles, trailers and semi-trailers by 9.6%.

Figure 3. Changes of Industrial Production Indices compared to the same month of the previous year (Calendar adjusted)





Annex

Table 1

Changes of Industrial Production Indices compared to the previous month¹

(Percent)

| Economic activities | NACE.BG - 2008 | 2021 | | | | | |
|---|-----------------|-------------|-------------|-------------|-------------|-------------|-------------|
| | | VII | VIII | IX | X | XI | XII* |
| Industry | B_TO_E36 | 0.9 | 2.1 | 1.3 | 1.0 | 1.9 | 0.7 |
| Mining and quarrying | B | -9.9 | 17.4 | -0.7 | -7.6 | 8.6 | -0.8 |
| Mining of coal and lignite | B05 | -12.6 | 31.8 | 12.1 | 5.3 | 0.9 | -2.8 |
| Extraction of crude petroleum and natural gas | B06 | .. | .. | .. | .. | .. | .. |
| Mining of metal ores | B07 | -11.7 | 17.2 | -5.1 | -18.1 | 23.7 | 0.8 |
| Other mining and quarrying | B08 | 2.5 | -7.6 | 7.7 | -3.6 | 0.8 | 1.1 |
| Mining support service activities | B09 | .. | .. | .. | .. | .. | .. |
| Manufacturing | C | 0.0 | 1.2 | 0.3 | -0.3 | 1.5 | 1.6 |
| Manufacture of food products | C10 | 1.5 | -1.2 | 0.4 | 2.4 | 1.2 | 0.5 |
| Manufacture of beverages | C11 | 5.2 | -2.0 | -6.6 | 2.8 | 5.9 | -3.4 |
| Manufacture of tobacco products | C12 | -1.5 | -25.2 | 17.1 | -14.6 | -4.0 | -18.6 |
| Manufacture of textiles | C13 | -0.4 | 14.5 | -2.4 | 3.4 | -8.8 | 12.3 |
| Manufacture of wearing apparel | C14 | 0.7 | 6.0 | -3.0 | 3.3 | 2.9 | 1.2 |
| Manufacture of leather and related products | C15 | 2.3 | -0.8 | -1.3 | 3.0 | 6.3 | 3.1 |
| Manufacture of wood and of products of wood and cork, except furniture; manufacture of articles of straw and plaiting materials | C16 | 4.7 | 7.7 | -2.2 | -13.5 | 2.4 | 7.6 |
| Manufacture of paper and paper products | C17 | 4.6 | 2.7 | 0.1 | -3.4 | -2.1 | 3.8 |
| Printing and reproduction of recorded media | C18 | 0.3 | 6.0 | -5.8 | 4.6 | 2.0 | -3.8 |
| Manufacture of coke and refined petroleum products | C19 | .. | .. | .. | .. | .. | .. |
| Manufacture of chemicals and chemical products | C20 | 0.7 | -2.6 | -0.1 | 8.6 | 4.4 | -0.8 |
| Manufacture of basic pharmaceutical products and pharmaceutical preparations | C21 | 3.7 | 9.2 | -10.7 | 8.1 | 2.6 | 2.3 |
| Manufacture of rubber and plastic products | C22 | -5.9 | 7.2 | -7.1 | -0.5 | -1.3 | 4.5 |
| Manufacture of other non-metallic mineral products | C23 | 0.4 | 4.9 | -1.5 | -0.2 | 4.4 | -8.7 |
| Manufacture of basic metals | C24 | -14.1 | 1.1 | 0.4 | 10.2 | 0.7 | 4.7 |
| Manufacture of fabricated metal products, except machinery and equipment | C25 | 11.0 | -18.9 | 11.9 | -5.7 | 0.5 | 2.0 |
| Manufacture of computer, electronic and optical products | C26 | 1.9 | 5.7 | 6.2 | 19.0 | -5.1 | -28.2 |
| Manufacture of electrical equipment | C27 | -2.5 | 1.5 | 2.7 | -5.1 | 0.7 | 2.1 |
| Manufacture of machinery and equipment n.e.c. | C28 | -3.2 | 1.9 | -2.4 | 3.5 | 0.4 | 0.9 |
| Manufacture of motor vehicles, trailers and semi-trailers | C29 | -12.3 | 19.9 | -20.5 | -10.0 | 20.7 | 25.1 |
| Manufacture of other transport equipment | C30 | -4.3 | -16.6 | 32.6 | -10.4 | -2.0 | 16.6 |
| Manufacture of furniture | C31 | 0.4 | -3.7 | 5.0 | 1.9 | -2.7 | -4.3 |
| Other manufacturing | C32 | 10.5 | 5.4 | 11.4 | -20.7 | 35.3 | 13.7 |
| Repair and installation of machinery and equipment | C33 | -4.7 | 7.7 | 12.2 | -6.0 | -16.9 | 21.2 |
| Electricity, gas, steam and air conditioning supply | D | 10.4 | 2.6 | 9.7 | 11.0 | -4.0 | -2.4 |
| Electricity, gas, steam and air conditioning supply | D35 | 10.4 | 2.6 | 9.7 | 11.0 | -4.0 | -2.4 |

¹ Seasonally adjusted.

* Preliminary data.

„..“ - Confidential data.



Table 2

Changes of Industrial Production Indices compared to the same month of the previous year¹

(Per cent)

| Economic activities | NACE.BG - 2008 | 2021 | | | | | |
|---|-----------------|-------------|-------------|-------------|-------------|-------------|-------------|
| | | VII | VIII | IX | X | XI | XII* |
| Industry | B_TO_E36 | 8.6 | 10.6 | 9.7 | 9.6 | 13.7 | 14.3 |
| Mining and quarrying | B | 6.2 | 15.7 | 20.0 | 19.2 | 42.6 | 21.4 |
| Mining of coal and lignite | B05 | 16.8 | 38.7 | 75.7 | 81.8 | 98.8 | 76.4 |
| Extraction of crude petroleum and natural gas | B06 | .. | .. | .. | .. | .. | .. |
| Mining of metal ores | B07 | -9.2 | 4.7 | -5.7 | -16.4 | 39.2 | 5.9 |
| Other mining and quarrying | B08 | 45.8 | 21.6 | 35.2 | 24.7 | 9.2 | -0.6 |
| Mining support service activities | B09 | .. | .. | .. | .. | .. | .. |
| Manufacturing | C | 7.9 | 8.8 | 5.9 | 3.3 | 6.2 | 8.9 |
| Manufacture of food products | C10 | 5.3 | 12.4 | 6.5 | 7.5 | 9.2 | 11.9 |
| Manufacture of beverages | C11 | -30.3 | -31.2 | -39.3 | -35.7 | -23.1 | -17.7 |
| Manufacture of tobacco products | C12 | 59.1 | 0.3 | 37.0 | -2.1 | -1.0 | -31.3 |
| Manufacture of textiles | C13 | 12.9 | 32.2 | 27.1 | 23.2 | 16.7 | 28.2 |
| Manufacture of wearing apparel | C14 | -5.7 | 5.2 | 0.2 | 3.8 | 13.5 | 17.0 |
| Manufacture of leather and related products | C15 | -3.5 | -0.6 | -1.1 | -5.8 | 1.3 | 11.8 |
| Manufacture of wood and of products of wood and cork, except furniture; manufacture of articles of straw and plaiting materials | C16 | 18.4 | 25.5 | 20.6 | 2.1 | -1.3 | 7.9 |
| Manufacture of paper and paper products | C17 | 24.4 | 27.9 | 28.7 | 15.7 | 6.0 | 19.2 |
| Printing and reproduction of recorded media | C18 | 17.1 | 23.1 | 12.2 | 15.8 | 22.4 | 16.4 |
| Manufacture of coke and refined petroleum products | C19 | .. | .. | .. | .. | .. | .. |
| Manufacture of chemicals and chemical products | C20 | 7.2 | 2.6 | 7.9 | 14.1 | 19.8 | 19.2 |
| Manufacture of basic pharmaceutical products and pharmaceutical preparations | C21 | -1.5 | 18.3 | -3.9 | 1.0 | 4.3 | 6.0 |
| Manufacture of rubber and plastic products | C22 | 1.1 | 11.8 | -1.6 | -2.2 | -2.1 | 0.0 |
| Manufacture of other non-metallic mineral products | C23 | 3.6 | 15.8 | 9.1 | 10.8 | 11.7 | 7.0 |
| Manufacture of basic metals | C24 | -16.4 | -21.5 | -22.1 | 1.2 | -4.1 | -7.3 |
| Manufacture of fabricated metal products, except machinery and equipment | C25 | 32.1 | 4.8 | -2.0 | -11.0 | -2.1 | 2.1 |
| Manufacture of computer, electronic and optical products | C26 | 42.1 | 52.4 | 58.4 | 71.1 | 50.5 | 7.7 |
| Manufacture of electrical equipment | C27 | 11.6 | 13.1 | 16.1 | 3.6 | 8.6 | 6.0 |
| Manufacture of machinery and equipment n.e.c. | C28 | 23.3 | 20.3 | 8.1 | 14.5 | 16.5 | 11.9 |
| Manufacture of motor vehicles, trailers and semi-trailers | C29 | -8.6 | -2.3 | -26.1 | -42.9 | -26.8 | -9.6 |
| Manufacture of other transport equipment | C30 | 62.2 | -11.6 | 40.5 | 13.9 | 8.0 | 68.6 |
| Manufacture of furniture | C31 | 3.2 | -4.8 | 1.4 | 1.7 | 3.5 | -1.7 |
| Other manufacturing | C32 | 34.0 | 43.7 | 49.2 | 17.4 | 66.2 | 111.4 |
| Repair and installation of machinery and equipment | C33 | -17.5 | 12.9 | 30.1 | 14.1 | -16.8 | 29.0 |
| Electricity, gas, steam and air conditioning supply | D | 17.6 | 19.6 | 29.6 | 52.6 | 48.0 | 37.0 |
| Electricity, gas, steam and air conditioning supply | D35 | 17.6 | 19.6 | 29.6 | 52.6 | 48.0 | 37.0 |

¹ Calendar adjusted.

* Preliminary data.

„..“ - Confidential data.



Table 3

Industrial Production Indices
(Seasonally adjusted, 2015 = 100)

| NACE.BG - 2008 | 2020 | 2021 | | | | | | | | | | | |
|-----------------|--------------|--------------|--------------|--------------|--------------|--------------|--------------|--------------|--------------|--------------|--------------|--------------|--------------|
| | XII | I | II | III | IV | V | VI | VII | VIII | IX | X | XI | XII* |
| B_TO_E36 | 102.3 | 103.3 | 104.2 | 109.2 | 108.8 | 107.3 | 107.7 | 108.7 | 111.0 | 112.5 | 113.6 | 115.8 | 116.7 |
| B | 100.1 | 87.1 | 110.7 | 116.1 | 109.2 | 112.8 | 117.5 | 105.8 | 124.2 | 123.4 | 114.0 | 123.8 | 122.8 |
| B05 | 55.6 | 49.3 | 62.7 | 87.0 | 84.6 | 78.6 | 84.0 | 73.4 | 96.8 | 108.5 | 114.3 | 115.3 | 112.1 |
| B06 | .. | .. | .. | .. | .. | .. | .. | .. | .. | .. | .. | .. | .. |
| B07 | 128.2 | 95.5 | 145.5 | 132.0 | 120.5 | 122.5 | 135.5 | 119.7 | 140.2 | 133.0 | 108.9 | 134.7 | 135.8 |
| B08 | 143.4 | 144.8 | 139.8 | 146.3 | 147.5 | 148.8 | 142.4 | 146.0 | 134.9 | 145.3 | 140.0 | 141.1 | 142.7 |
| B09 | .. | .. | .. | .. | .. | .. | .. | .. | .. | .. | .. | .. | .. |
| C | 110.8 | 113.2 | 112.5 | 117.6 | 116.4 | 114.9 | 115.0 | 115.0 | 116.4 | 116.8 | 116.5 | 118.2 | 120.1 |
| C10 | 103.9 | 113.2 | 110.5 | 112.6 | 117.1 | 114.7 | 110.8 | 112.5 | 111.2 | 111.6 | 114.2 | 115.5 | 116.1 |
| C11 | 81.2 | 75.9 | 68.8 | 67.5 | 68.5 | 65.2 | 62.5 | 65.7 | 64.4 | 60.2 | 61.9 | 65.5 | 63.3 |
| C12 | 37.3 | 29.2 | 33.5 | 36.1 | 38.1 | 41.1 | 49.9 | 49.1 | 36.7 | 43.0 | 36.7 | 35.3 | 28.7 |
| C13 | 102.8 | 110.9 | 113.9 | 106.1 | 111.0 | 105.3 | 110.3 | 109.9 | 125.9 | 122.8 | 127.0 | 115.9 | 130.1 |
| C14 | 66.8 | 71.8 | 72.2 | 73.8 | 71.3 | 69.0 | 69.3 | 69.7 | 73.9 | 71.7 | 74.0 | 76.1 | 77.0 |
| C15 | 70.2 | 67.9 | 68.6 | 74.1 | 76.3 | 66.4 | 67.5 | 69.1 | 68.5 | 67.7 | 69.7 | 74.1 | 76.4 |
| C16 | 78.4 | 83.0 | 81.1 | 89.0 | 84.9 | 90.0 | 80.7 | 84.4 | 91.0 | 88.9 | 76.9 | 78.7 | 84.7 |
| C17 | 92.1 | 95.9 | 95.7 | 98.5 | 97.2 | 93.7 | 102.7 | 107.4 | 110.3 | 110.4 | 106.6 | 104.4 | 108.4 |
| C18 | 99.6 | 108.0 | 110.9 | 117.7 | 114.7 | 109.4 | 116.4 | 116.8 | 123.7 | 116.6 | 122.0 | 124.4 | 119.7 |
| C19 | .. | .. | .. | .. | .. | .. | .. | .. | .. | .. | .. | .. | .. |
| C20 | 112.7 | 113.3 | 119.0 | 117.7 | 101.2 | 114.1 | 121.7 | 122.5 | 119.3 | 119.1 | 129.3 | 135.0 | 133.8 |
| C21 | 122.9 | 117.9 | 110.8 | 123.9 | 110.5 | 116.7 | 110.0 | 114.1 | 124.6 | 111.3 | 120.4 | 123.5 | 126.3 |
| C22 | 148.5 | 152.9 | 155.1 | 151.6 | 157.1 | 154.5 | 154.5 | 145.3 | 155.7 | 144.7 | 143.9 | 142.1 | 148.5 |
| C23 | 107.8 | 113.2 | 112.8 | 115.0 | 111.6 | 120.3 | 117.6 | 118.0 | 123.8 | 121.9 | 121.7 | 127.1 | 116.1 |
| C24 | 115.1 | 114.6 | 113.7 | 116.5 | 118.7 | 112.7 | 108.3 | 93.0 | 94.1 | 94.5 | 104.1 | 104.9 | 109.8 |
| C25 | 117.1 | 135.6 | 122.1 | 123.0 | 135.7 | 133.7 | 122.4 | 135.9 | 110.2 | 123.3 | 116.3 | 116.8 | 119.1 |
| C26 | 166.3 | 198.0 | 186.6 | 200.2 | 201.5 | 211.9 | 207.1 | 211.1 | 223.0 | 236.8 | 281.7 | 267.3 | 191.9 |
| C27 | 141.2 | 144.8 | 141.4 | 150.5 | 161.0 | 155.9 | 151.8 | 148.0 | 150.3 | 154.4 | 146.5 | 147.4 | 150.6 |
| C28 | 108.9 | 108.6 | 106.8 | 112.6 | 110.3 | 111.6 | 120.7 | 116.9 | 119.1 | 116.2 | 120.3 | 120.8 | 121.9 |
| C29 | 182.1 | 162.9 | 155.2 | 153.7 | 134.4 | 123.5 | 134.9 | 118.3 | 141.8 | 112.8 | 101.5 | 122.5 | 153.3 |
| C30 | 161.0 | 186.7 | 192.2 | 216.9 | 226.5 | 193.4 | 239.7 | 229.4 | 191.2 | 253.6 | 227.2 | 222.6 | 259.4 |
| C31 | 104.4 | 114.5 | 108.7 | 106.1 | 104.6 | 103.7 | 106.1 | 106.5 | 102.6 | 107.7 | 109.7 | 106.7 | 102.1 |
| C32 | 96.8 | 98.8 | 115.1 | 111.6 | 138.0 | 113.1 | 126.9 | 140.3 | 147.9 | 164.8 | 130.6 | 176.8 | 201.0 |
| C33 | 90.3 | 99.8 | 106.6 | 114.0 | 107.1 | 111.9 | 105.7 | 100.7 | 108.5 | 121.6 | 114.3 | 95.0 | 115.2 |
| D | 73.1 | 73.8 | 72.5 | 77.3 | 78.6 | 76.6 | 76.8 | 84.8 | 87.0 | 95.5 | 105.9 | 101.7 | 99.3 |
| 35 | 73.1 | 73.8 | 72.5 | 77.3 | 78.6 | 76.6 | 76.8 | 84.8 | 87.0 | 95.5 | 105.9 | 101.7 | 99.3 |

* Preliminary data.

„..“ - Confidential data.



Table 4

Industrial Production Indices
(Calendar adjusted, 2015 = 100)

| NACE.BG - 2008 | 2018 | 2019 | 2020 | 2021 | | | | | | | | | | | |
|-------------------|--------------|--------------|--------------|--------------|--------------|--------------|--------------|--------------|--------------|--------------|--------------|--------------|--------------|--------------|--------------|
| | XII | XII | XII | I | II | III | IV | V | VI | VII | VIII | IX | X | XI | XII* |
| B_TO_E36 | 109.3 | 107.5 | 104.3 | 99.6 | 100.2 | 112.1 | 105.5 | 102.4 | 110.4 | 112.4 | 107.0 | 113.4 | 119.3 | 123.3 | 119.2 |
| B | 111.6 | 116.5 | 109.9 | 84.6 | 105.5 | 112.1 | 101.9 | 105.7 | 113.9 | 103.6 | 122.3 | 129.3 | 127.7 | 134.1 | 133.3 |
| B05 | 116.0 | 93.6 | 73.2 | 63.2 | 64.7 | 79.5 | 66.9 | 61.0 | 66.2 | 66.0 | 94.0 | 114.8 | 136.0 | 129.1 | 129.1 |
| B06 | .. | .. | .. | .. | .. | .. | .. | .. | .. | .. | .. | .. | .. | .. | .. |
| B07 | 117.4 | 143.5 | 128.2 | 95.5 | 140.2 | 131.0 | 120.5 | 120.6 | 144.4 | 119.7 | 140.2 | 133.0 | 108.9 | 134.7 | 135.8 |
| B08 | 86.5 | 97.8 | 146.6 | 100.0 | 108.6 | 143.2 | 143.8 | 152.6 | 153.1 | 156.4 | 143.2 | 158.6 | 150.0 | 159.7 | 145.7 |
| B09 | .. | .. | .. | .. | .. | .. | .. | .. | .. | .. | .. | .. | .. | .. | .. |
| C | 109.7 | 109.7 | 107.0 | 102.8 | 105.2 | 118.9 | 114.7 | 113.2 | 121.3 | 121.1 | 111.4 | 118.5 | 124.2 | 125.9 | 116.5 |
| C10 | 109.3 | 114.7 | 108.0 | 100.1 | 97.2 | 112.1 | 110.9 | 112.9 | 114.0 | 113.7 | 112.3 | 117.9 | 125.7 | 123.1 | 120.8 |
| C11 | 99.2 | 95.2 | 75.2 | 45.3 | 46.2 | 58.3 | 61.4 | 68.0 | 75.2 | 84.9 | 85.0 | 69.9 | 60.2 | 62.4 | 61.9 |
| C12 | 63.4 | 43.0 | 40.7 | 17.7 | 22.5 | 36.2 | 44.8 | 46.6 | 60.2 | 63.1 | 32.8 | 44.7 | 35.7 | 38.9 | 28.0 |
| C13 | 88.0 | 85.1 | 90.2 | 101.5 | 116.7 | 116.0 | 113.2 | 115.7 | 122.3 | 112.6 | 101.3 | 118.8 | 137.1 | 118.7 | 115.6 |
| C14 | 80.4 | 76.2 | 63.4 | 76.1 | 72.9 | 71.4 | 65.5 | 62.3 | 73.9 | 81.1 | 72.9 | 70.6 | 75.4 | 77.4 | 74.2 |
| C15 | 81.3 | 78.9 | 61.9 | 66.8 | 66.4 | 76.0 | 71.9 | 61.9 | 73.0 | 85.4 | 57.2 | 67.5 | 77.2 | 82.6 | 69.2 |
| C16 | 73.6 | 79.4 | 74.5 | 69.0 | 71.5 | 87.7 | 83.8 | 91.5 | 85.8 | 90.5 | 90.7 | 94.1 | 82.7 | 84.1 | 80.4 |
| C17 | 93.6 | 91.9 | 88.0 | 96.2 | 94.8 | 103.2 | 96.7 | 94.9 | 104.9 | 108.4 | 109.1 | 109.1 | 109.7 | 105.2 | 104.9 |
| C18 | 108.6 | 109.8 | 104.4 | 98.2 | 103.8 | 118.8 | 113.3 | 109.9 | 120.2 | 117.4 | 117.9 | 112.8 | 130.5 | 141.9 | 121.6 |
| C19 | .. | .. | .. | .. | .. | .. | .. | .. | .. | .. | .. | .. | .. | .. | .. |
| C20 | 112.3 | 116.2 | 109.9 | 105.1 | 112.4 | 128.4 | 101.5 | 113.8 | 126.5 | 126.4 | 115.7 | 118.1 | 132.7 | 137.5 | 131.0 |
| C21 | 132.6 | 109.7 | 126.6 | 114.5 | 98.6 | 139.4 | 108.7 | 116.6 | 113.1 | 112.6 | 114.8 | 105.6 | 121.7 | 136.8 | 134.3 |
| C22 | 120.6 | 120.3 | 131.3 | 138.7 | 149.1 | 157.7 | 150.5 | 148.9 | 160.0 | 151.1 | 151.0 | 147.9 | 159.7 | 147.9 | 131.3 |
| C23 | 101.4 | 110.4 | 95.8 | 80.5 | 91.1 | 112.3 | 114.9 | 129.4 | 127.4 | 128.8 | 130.9 | 131.2 | 136.1 | 138.7 | 102.5 |
| C24 | 113.7 | 100.0 | 114.2 | 115.2 | 108.8 | 123.5 | 123.4 | 106.8 | 104.9 | 95.6 | 86.9 | 86.5 | 109.0 | 112.8 | 105.9 |
| C25 | 107.8 | 110.3 | 128.0 | 103.0 | 112.3 | 124.6 | 131.3 | 128.5 | 129.2 | 146.2 | 106.5 | 126.6 | 120.6 | 128.0 | 130.7 |
| C26 | 143.7 | 189.1 | 178.5 | 190.1 | 178.6 | 211.4 | 196.4 | 204.7 | 216.1 | 213.7 | 197.0 | 226.7 | 311.7 | 301.0 | 192.3 |
| C27 | 107.8 | 106.5 | 125.8 | 138.0 | 139.9 | 157.3 | 157.6 | 147.8 | 158.5 | 151.5 | 134.8 | 159.6 | 159.5 | 160.0 | 133.4 |
| C28 | 118.8 | 102.1 | 104.7 | 100.1 | 102.6 | 117.8 | 114.4 | 108.1 | 129.3 | 122.3 | 104.3 | 116.6 | 128.1 | 130.1 | 117.1 |
| C29 | 100.4 | 112.7 | 153.5 | 159.1 | 150.9 | 159.9 | 134.3 | 113.8 | 139.6 | 115.6 | 125.8 | 113.6 | 109.1 | 134.4 | 138.7 |
| C30 | 108.8 | 153.3 | 132.0 | 185.9 | 208.0 | 253.3 | 253.7 | 186.8 | 286.3 | 249.5 | 144.9 | 224.3 | 225.2 | 230.1 | 222.5 |
| C31 | 106.9 | 99.2 | 101.8 | 99.2 | 98.7 | 106.9 | 99.7 | 100.2 | 110.6 | 112.4 | 100.8 | 111.0 | 120.1 | 116.1 | 100.1 |
| C32 | 129.3 | 163.3 | 86.3 | 87.8 | 104.4 | 112.2 | 134.5 | 110.2 | 143.1 | 141.4 | 153.3 | 180.8 | 142.5 | 193.6 | 182.4 |
| C33 | 176.3 | 146.1 | 119.0 | 72.5 | 92.2 | 115.4 | 96.0 | 103.2 | 109.1 | 103.7 | 104.7 | 127.4 | 119.7 | 105.9 | 153.5 |
| D | 106.8 | 95.1 | 91.5 | 93.2 | 78.6 | 87.5 | 71.1 | 62.0 | 66.9 | 82.1 | 82.5 | 86.8 | 99.6 | 111.8 | 125.4 |
| D35 | 106.8 | 95.1 | 91.5 | 93.2 | 78.6 | 87.5 | 71.1 | 62.0 | 66.9 | 82.1 | 82.5 | 86.8 | 99.6 | 111.8 | 125.4 |

* Preliminary data.

„...“ - Confidential data.