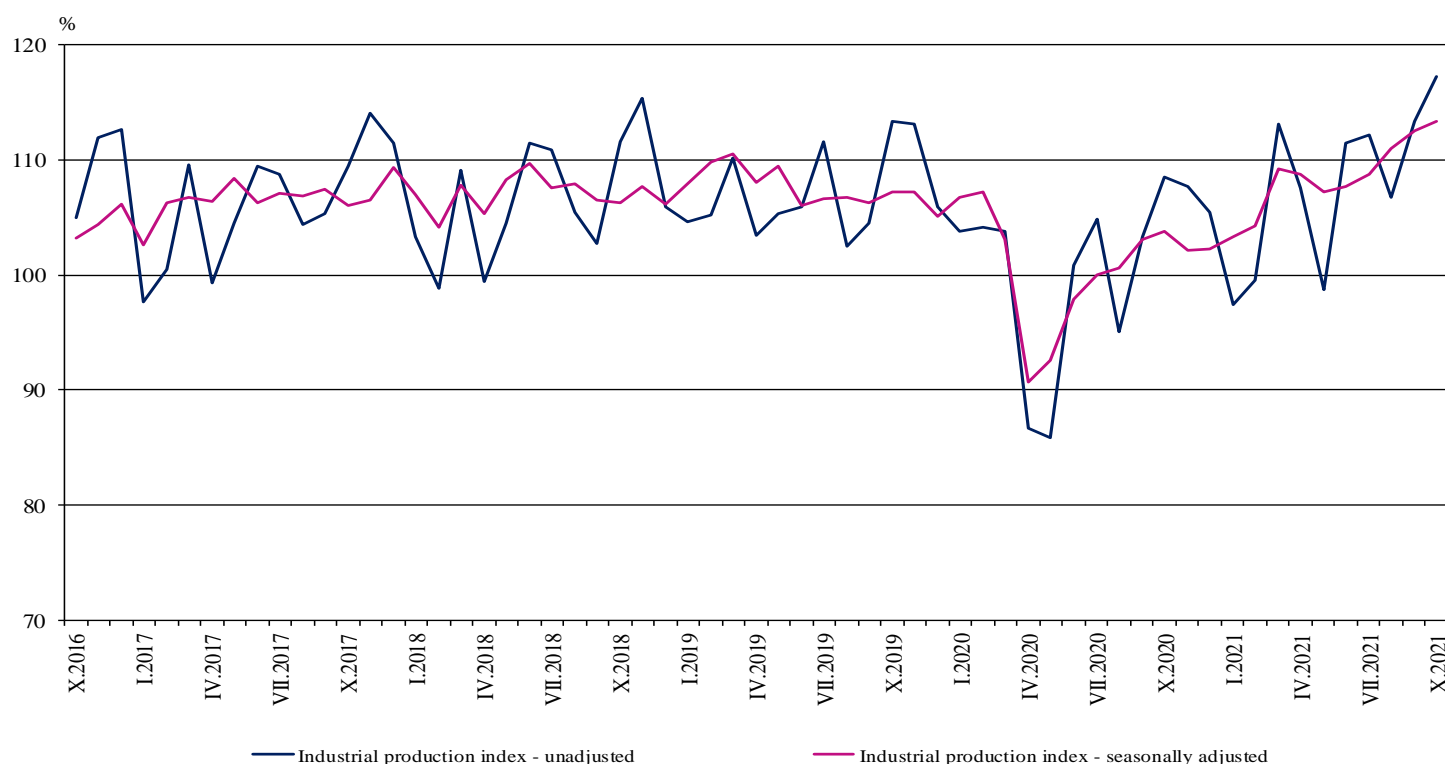


INDUSTRIAL PRODUCTION INDICES IN OCTOBER 2021¹

According to the preliminary data in October 2021, the Industrial Production Index², seasonally adjusted³, increased by 0.7% compared to September 2021.

In October 2021, the calendar adjusted⁴ Industrial Production Index rose by 9.7% in comparison with the same month of 2020.

Figure 1. Industrial Production Indices (2015 = 100)



¹ October 2021 data are preliminary. The final data on Industrial Production and Turnover Indices for September 2021 can be found on the NSI website: <http://www.nsi.bg/en>.

² Monthly Industrial Production and Industrial turnover indices measure changes in production and turnover values of industrial enterprises. This information can be used to assess the current economic development and for short-term forecasts. Indices do not measure the actual production level, it aims to measure the average change in the value of production between two points of time. Indices are compiled, based on information collected through a representative sampling survey on industrial enterprises. The sample covers enterprises with an annual turnover of more than 97% of total turnover in the industry.

Industrial production indices are calculated at a constant base year that is to say they are weighted with the structure of the value-added at factor costs in the base year.

³ Seasonal adjustment is a statistical method, which eliminates the seasonal component of time series.

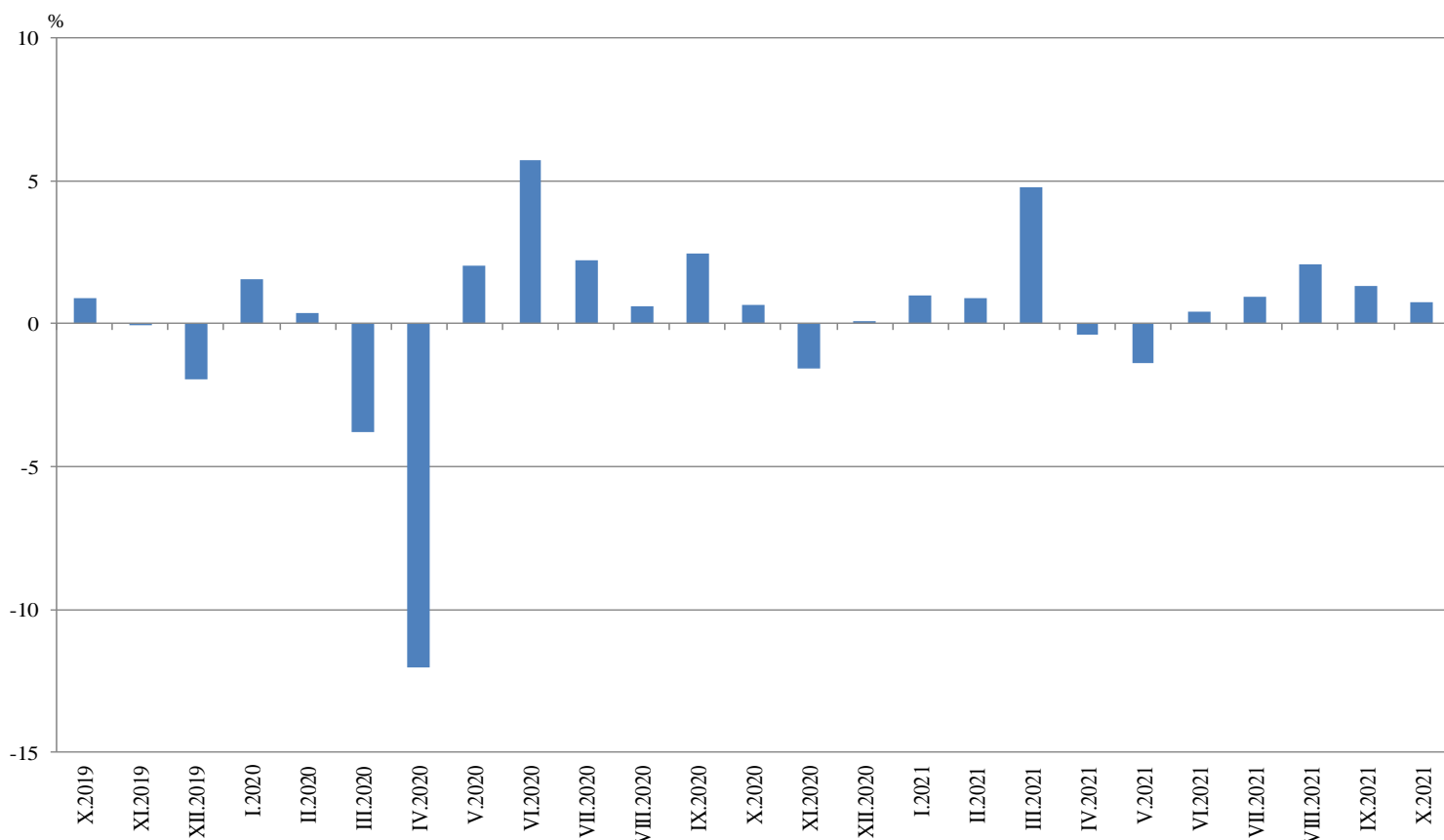
⁴ Calendar adjustment is an adjustment for variations caused by calendar effects, the different number of calendar and working days in the months, national holidays and outliers (for example the presence of more non-working days in May could contribute to the decline in the production in some activities).

Monthly changes

In October 2021, compared to September 2021, the seasonally adjusted Industrial Production Index rose in the electricity, gas, steam and air conditioning supply by 9.9%, while fall was observed in the mining and quarrying industry by 7.8% and in manufacturing by 0.2%.

A major decrease was seen in the other manufacturing by 20.2%, in the manufacture of tobacco products by 14.7%, in the manufacture of wood and of products of wood and cork, except furniture; manufacture of articles of straw and plaiting materials by 13.2%, in the manufacture of other transport equipment by 9.9% and in the manufacture of motor vehicles, trailers and semi-trailers by 9.2%. The most significant increase in manufacturing was registered in the manufacture of computer, electronic and optical products by 18.5%, in the manufacture of basic metals by 9.6%, in the manufacture of basic pharmaceutical products and pharmaceutical preparations by 8.0% and in the manufacture of chemicals and chemical products by 5.8%.

Figure 2. Changes of Industrial Production Indices compared to the previous month
(Seasonally adjusted)



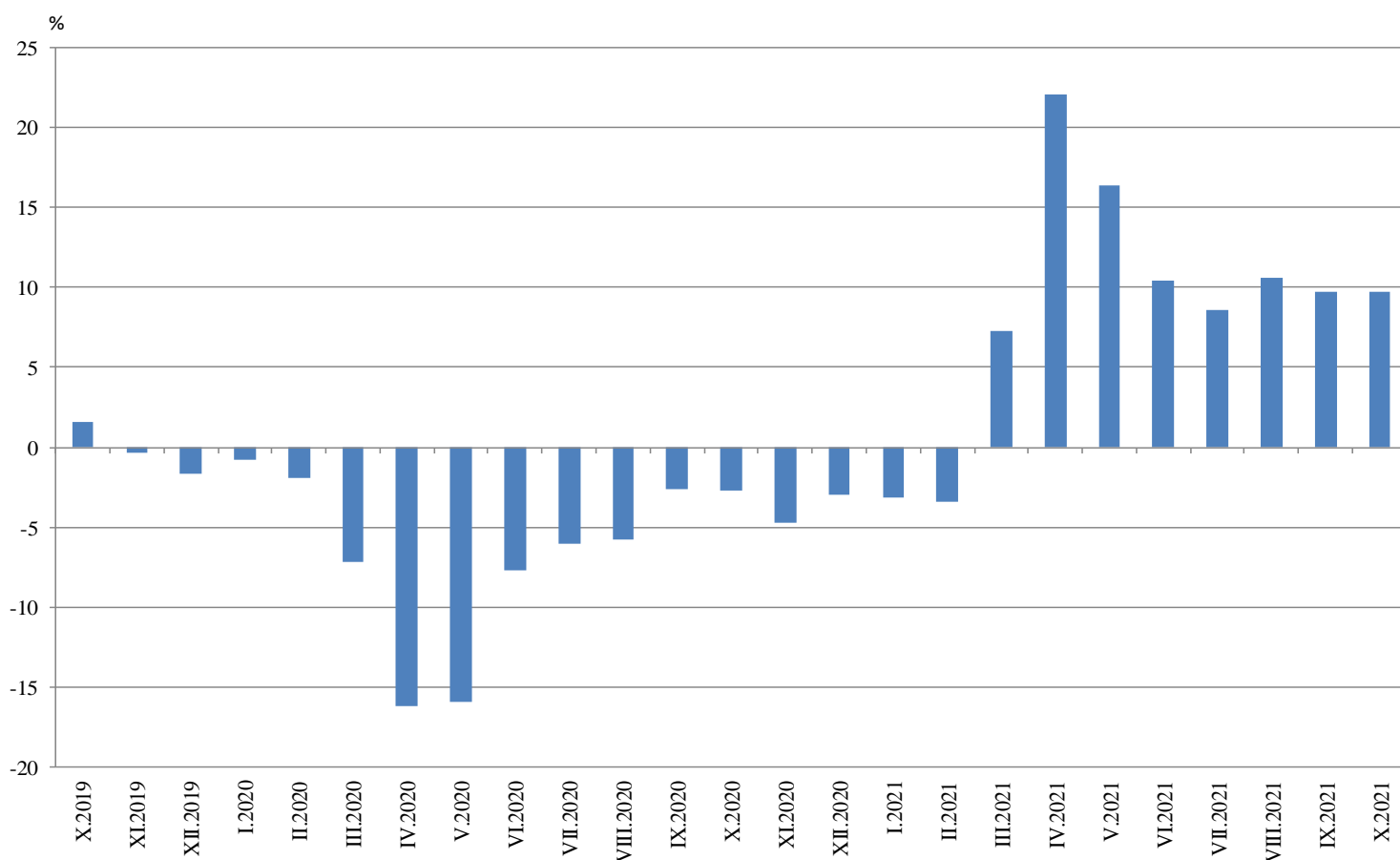
www.nsi.bg

Annual changes

On annual basis, in October 2021 Industrial Production Index calculated from calendar day adjusted data rose in the electricity, gas, steam and air conditioning supply by 52.3%, in the mining and quarrying industry by 19.1% and in the manufacturing by 3.5%.

The most significant increase in the manufacturing compared to the same month of the previous year was observed in the manufacture of computer, electronic and optical products by 71.1%, in the manufacture of textiles by 23.1%, in the manufacture of paper and paper products by 21.0% and in the other manufacturing by 19.6%. A major decrease was seen in the manufacture of motor vehicles, trailers and semi-trailers by 41.7%, in the manufacture of beverages by 36.6% and in the manufacture of fabricated metal products, except machinery and equipment by 8.3%.

Figure 3. Changes of Industrial Production Indices compared to the same month of the previous year (Calendar adjusted)



Annex

Table 1

Changes of Industrial Production Indices compared to the previous month¹

(Per cent)

Economic activities	NACE.BG - 2008	2021					
		V	VI	VII	VIII	IX	X*
Industry	B_TO_E36	-1.4	0.4	0.9	2.1	1.3	0.7
Mining and quarrying	B	3.3	4.1	-9.9	17.4	-0.7	-7.8
Mining of coal and lignite	B05	-7.1	6.9	-12.6	31.8	12.1	4.9
Extraction of crude petroleum and natural gas	B06
Mining of metal ores	B07	1.7	10.6	-11.7	17.2	-5.1	-18.1
Other mining and quarrying	B08	0.9	-4.3	2.5	-7.6	7.7	-8.1
Mining support service activities	B09
Manufacturing	C	-1.3	0.1	0.0	1.2	0.3	-0.2
Manufacture of food products	C10	-2.1	-3.4	1.5	-1.2	0.4	2.0
Manufacture of beverages	C11	-4.8	-4.1	5.2	-2.0	-6.6	0.7
Manufacture of tobacco products	C12	7.9	21.2	-1.5	-25.2	17.1	-14.7
Manufacture of textiles	C13	-5.1	4.8	-0.4	14.5	-2.4	4.0
Manufacture of wearing apparel	C14	-3.2	0.3	0.7	6.0	-3.0	3.1
Manufacture of leather and related products	C15	-13.1	1.8	2.3	-0.8	-1.3	0.3
Manufacture of wood and of products of wood and cork, except furniture; manufacture of articles of straw and plaiting materials	C16	6.1	-10.4	4.7	7.7	-2.2	-13.2
Manufacture of paper and paper products	C17	-3.6	9.6	4.6	2.7	0.1	0.7
Printing and reproduction of recorded media	C18	-4.6	6.4	0.3	6.0	-5.8	4.8
Manufacture of coke and refined petroleum products	C19
Manufacture of chemicals and chemical products	C20	12.8	6.6	0.7	-2.6	-0.1	5.8
Manufacture of basic pharmaceutical products and pharmaceutical preparations	C21	5.6	-5.7	3.7	9.2	-10.7	8.0
Manufacture of rubber and plastic products	C22	-1.7	0.0	-5.9	7.2	-7.1	-0.5
Manufacture of other non-metallic mineral products	C23	7.7	-2.2	0.4	4.9	-1.5	-0.4
Manufacture of basic metals	C24	-5.1	-3.9	-14.1	1.1	0.4	9.6
Manufacture of fabricated metal products, except machinery and equipment	C25	-1.4	-8.4	11.0	-18.9	11.9	-3.0
Manufacture of computer, electronic and optical products	C26	5.2	-2.3	1.9	5.7	6.2	18.5
Manufacture of electrical equipment	C27	-3.1	-2.7	-2.5	1.5	2.7	-5.2
Manufacture of machinery and equipment n.e.c.	C28	1.2	8.2	-3.2	1.9	-2.4	3.0
Manufacture of motor vehicles, trailers and semi-trailers	C29	-8.1	9.2	-12.3	19.9	-20.5	-9.2
Manufacture of other transport equipment	C30	-14.6	23.9	-4.3	-16.6	32.6	-9.9
Manufacture of furniture	C31	-0.9	2.3	0.4	-3.7	5.0	1.8
Other manufacturing	C32	-18.0	12.2	10.5	5.4	11.4	-20.2
Repair and installation of machinery and equipment	C33	4.5	-5.5	-4.7	7.7	12.2	-4.7
Electricity, gas, steam and air conditioning supply	D	-2.5	0.3	10.4	2.6	9.7	9.9
Electricity, gas, steam and air conditioning Supply	D35	-2.5	0.3	10.4	2.6	9.7	9.9

¹ Seasonally adjusted.

* Preliminary data.

„..“ - Confidential data.

Table 2
Changes of Industrial Production Indices compared to the same month of the previous year¹
(Per cent)

Economic activities	NACE.BG - 2008	2021					
		V	VI	VII	VIII	IX	X*
Industry	B_TO_E36	16.4	10.5	8.6	10.6	9.7	9.7
Mining and quarrying	B	14.0	7.3	6.2	15.7	20.0	19.1
Mining of coal and lignite	B05	35.1	25.3	16.8	38.7	75.7	81.8
Extraction of crude petroleum and natural gas	B06
Mining of metal ores	B07	-11.0	-5.4	-9.2	4.7	-5.7	-16.4
Other mining and quarrying	B08	69.0	37.0	45.8	21.6	35.2	24.1
Mining support service activities	B09
Manufacturing	C	18.7	12.2	7.9	8.8	5.9	3.5
Manufacture of food products	C10	10.7	0.1	5.3	12.4	6.5	7.2
Manufacture of beverages	C11	-30.8	-36.8	-30.3	-31.2	-39.3	-36.6
Manufacture of tobacco products	C12	29.0	58.7	59.1	0.3	37.0	-3.2
Manufacture of textiles	C13	7.9	16.9	12.9	32.2	27.1	23.1
Manufacture of wearing apparel	C14	-18.1	-1.5	-5.7	5.2	0.2	3.7
Manufacture of leather and related products	C15	-8.7	-15.8	-3.5	-0.6	-1.1	-7.6
Manufacture of wood and of products of wood and cork, except furniture; manufacture of articles of straw and plaiting materials	C16	47.6	14.7	18.4	25.5	20.6	2.5
Manufacture of paper and paper products	C17	5.9	12.7	24.4	27.9	28.7	21.0
Printing and reproduction of recorded media	C18	22.9	26.7	17.1	23.1	12.2	16.4
Manufacture of coke and refined petroleum products	C19
Manufacture of chemicals and chemical products	C20	3.0	5.5	7.2	2.6	7.9	11.2
Manufacture of basic pharmaceutical products and pharmaceutical preparations	C21	-2.7	-10.2	-1.5	18.3	-3.9	1.0
Manufacture of rubber and plastic products	C22	24.7	22.7	1.1	11.8	-1.6	-2.6
Manufacture of other non-metallic mineral products	C23	36.2	19.1	3.6	15.8	9.1	10.7
Manufacture of basic metals	C24	-0.5	-10.8	-16.4	-21.5	-22.1	1.3
Manufacture of fabricated metal products, except machinery and equipment	C25	25.2	13.1	32.1	4.8	-2.0	-8.3
Manufacture of computer, electronic and optical products	C26	49.0	46.2	42.1	52.4	58.4	71.1
Manufacture of electrical equipment	C27	41.8	23.0	11.6	13.1	16.1	3.5
Manufacture of machinery and equipment n.e.c.	C28	43.4	42.6	23.3	20.3	8.1	13.8
Manufacture of motor vehicles, trailers and semi-trailers	C29	96.0	28.0	-8.6	-2.3	-26.1	-41.7
Manufacture of other transport equipment	C30	12.8	70.3	62.2	-11.6	40.5	13.9
Manufacture of furniture	C31	22.2	3.9	3.2	-4.8	1.4	1.5
Other manufacturing	C32	38.9	52.3	34.0	43.7	49.2	19.6
Repair and installation of machinery and equipment	C33	22.9	0.4	-17.5	12.9	30.1	14.8
Electricity, gas, steam and air conditioning supply	D	8.4	2.9	17.6	19.6	29.6	52.3
Electricity, gas, steam and air conditioning supply	D35	8.4	2.9	17.6	19.6	29.6	52.3

¹ Calendar adjusted.

* Preliminary data.

„..“ - Confidential data.

Table 3

Industrial Production Indices
(Seasonally adjusted, 2015 = 100)

NACE.BG - 2008	2020			2021									
	X	XI	XII	I	II	III	IV	V	VI	VII	VIII	IX	X*
B_TO_E36	103.8	102.2	102.3	103.3	104.2	109.2	108.8	107.3	107.7	108.7	111.0	112.5	113.3
B	94.9	87.8	100.1	87.1	110.7	116.1	109.2	112.8	117.5	105.8	124.2	123.4	113.7
B05	53.8	51.9	55.6	49.3	62.7	87.0	84.6	78.6	84.0	73.4	96.8	108.5	113.9
B06
B07	130.4	96.8	128.2	95.5	145.5	132.0	120.5	122.5	135.5	119.7	140.2	133.0	108.9
B08	106.4	128.5	143.4	144.8	139.8	146.3	147.5	148.8	142.4	146.0	134.9	145.3	133.5
B09
C	112.3	111.1	110.8	113.2	112.5	117.6	116.4	114.9	115.0	115.0	116.4	116.8	116.5
C10	106.2	105.9	103.9	113.2	110.5	112.6	117.1	114.7	110.8	112.5	111.2	111.6	113.8
C11	98.0	90.2	81.2	75.9	68.8	67.5	68.5	65.2	62.5	65.7	64.4	60.2	60.6
C12	32.0	34.1	37.3	29.2	33.5	36.1	38.1	41.1	49.9	49.1	36.7	43.0	36.7
C13	105.6	97.3	102.8	110.9	113.9	106.1	111.0	105.3	110.3	109.9	125.9	122.8	127.8
C14	71.7	67.7	66.8	71.8	72.2	73.8	71.3	69.0	69.3	69.7	73.9	71.7	73.9
C15	73.1	72.2	70.2	67.9	68.6	74.1	76.3	66.4	67.5	69.1	68.5	67.7	67.9
C16	74.1	78.6	78.4	83.0	81.1	89.0	84.9	90.0	80.7	84.4	91.0	88.9	77.2
C17	91.6	96.9	92.1	95.9	95.7	98.5	97.2	93.7	102.7	107.4	110.3	110.4	111.2
C18	104.2	100.9	99.6	108.0	110.9	117.7	114.7	109.4	116.4	116.8	123.7	116.6	122.2
C19
C20	114.5	113.3	112.7	113.3	119.0	117.7	101.2	114.1	121.7	122.5	119.3	119.1	126.0
C21	121.7	119.6	122.9	117.9	110.8	123.9	110.5	116.7	110.0	114.1	124.6	111.3	120.3
C22	145.2	141.8	148.5	152.9	155.1	151.6	157.1	154.5	154.5	145.3	155.7	144.7	144.0
C23	109.7	114.7	107.8	113.2	112.8	115.0	111.6	120.3	117.6	118.0	123.8	121.9	121.4
C24	110.0	111.0	115.1	114.6	113.7	116.5	118.7	112.7	108.3	93.0	94.1	94.5	103.5
C25	129.6	118.5	117.1	135.6	122.1	123.0	135.7	133.7	122.4	135.9	110.2	123.3	119.6
C26	170.5	183.7	166.3	198.0	186.6	200.2	201.5	211.9	207.1	211.1	223.0	236.8	280.5
C27	138.6	133.5	141.2	144.8	141.4	150.5	161.0	155.9	151.8	148.0	150.3	154.4	146.4
C28	105.4	103.6	108.9	108.6	106.8	112.6	110.3	111.6	120.7	116.9	119.1	116.2	119.7
C29	171.3	167.6	182.1	162.9	155.2	153.7	134.4	123.5	134.9	118.3	141.8	112.8	102.4
C30	196.7	195.5	161.0	186.7	192.2	216.9	226.5	193.4	239.7	229.4	191.2	253.6	228.4
C31	109.7	104.7	104.4	114.5	108.7	106.1	104.6	103.7	106.1	106.5	102.6	107.7	109.6
C32	108.7	107.5	96.8	98.8	115.1	111.6	138.0	113.1	126.9	140.3	147.9	164.8	131.6
C33	100.9	111.1	90.3	99.8	106.6	114.0	107.1	111.9	105.7	100.7	108.5	121.6	115.9
D	73.1	72.3	73.1	73.8	72.5	77.3	78.6	76.6	76.8	84.8	87.0	95.5	104.9
35	73.1	72.3	73.1	73.8	72.5	77.3	78.6	76.6	76.8	84.8	87.0	95.5	104.9

* Preliminary data.

...“ - Confidential data.

Table 4

Industrial Production Indices
(Calendar adjusted, 2015 = 100)

NACE.BG - 2008	2018	2019	2020			2021									
	X	X	X	XI	XII	I	II	III	IV	V	VI	VII	VIII	IX	X
B_TO_E36	110.1	111.8	108.8	108.4	104.3	99.6	100.2	112.1	105.5	102.4	110.4	112.4	107.0	113.4	119.4
B	110.4	121.3	107.1	94.1	109.9	84.6	105.5	112.1	101.9	105.7	113.9	103.6	122.3	129.3	127.5
B05	112.5	100.7	74.8	64.9	73.2	63.2	64.7	79.5	66.9	61.0	66.2	66.0	94.0	114.8	136.0
B06
B07	111.4	144.0	130.4	96.8	128.2	95.5	140.2	131.0	120.5	120.6	144.4	119.7	140.2	133.0	108.9
B08	110.7	121.5	120.3	146.2	146.6	100.0	108.6	143.2	143.8	152.6	153.1	156.4	143.2	158.6	149.3
B09
C	119.2	122.1	120.2	118.6	107.0	102.8	105.2	118.9	114.7	113.2	121.3	121.1	111.4	118.5	124.4
C10	110.9	125.2	116.9	112.7	108.0	100.1	97.2	112.1	110.9	112.9	114.0	113.7	112.3	117.9	125.3
C11	93.2	98.5	93.6	81.1	75.2	45.3	46.2	58.3	61.4	68.0	75.2	84.9	85.0	69.9	59.3
C12	79.3	57.0	36.4	39.3	40.7	17.7	22.5	36.2	44.8	46.6	60.2	63.1	32.8	44.7	35.3
C13	100.9	101.3	111.3	101.7	90.2	101.5	116.7	116.0	113.2	115.7	122.3	112.6	101.3	118.8	137.0
C14	85.3	83.0	72.6	68.2	63.4	76.1	72.9	71.4	65.5	62.3	73.9	81.1	72.9	70.6	75.3
C15	100.0	100.1	81.9	81.6	61.9	66.8	66.4	76.0	71.9	61.9	73.0	85.4	57.2	67.5	75.7
C16	84.0	86.2	81.0	85.2	74.5	69.0	71.5	87.7	83.8	91.5	85.8	90.5	90.7	94.1	83.1
C17	112.1	102.8	94.8	99.2	88.0	96.2	94.8	103.2	96.7	94.9	104.9	108.4	109.1	109.1	114.7
C18	114.5	121.1	112.8	115.9	104.4	98.2	103.8	118.8	113.3	109.9	120.2	117.4	117.9	112.8	131.2
C19
C20	127.3	119.8	116.3	114.8	109.9	105.1	112.4	128.4	101.5	113.8	126.5	126.4	115.7	118.1	129.3
C21	116.1	107.9	120.5	131.1	126.6	114.5	98.6	139.4	108.7	116.6	113.1	112.6	114.8	105.6	121.7
C22	147.6	151.0	163.2	151.1	131.3	138.7	149.1	157.7	150.5	148.9	160.0	151.1	151.0	147.9	159.0
C23	126.3	125.7	122.8	124.2	95.8	80.5	91.1	112.3	114.9	129.4	127.4	128.8	130.9	131.2	136.0
C24	104.1	123.4	107.7	117.6	114.2	115.2	108.8	123.5	123.4	106.8	104.9	95.6	86.9	86.5	109.1
C25	124.4	123.0	135.5	130.8	128.0	103.0	112.3	124.6	131.3	128.5	129.2	146.2	106.5	126.6	124.2
C26	158.2	165.8	182.2	200.1	178.5	190.1	178.6	211.4	196.4	204.7	216.1	213.7	197.0	226.7	311.7
C27	134.4	132.5	154.0	147.4	125.8	138.0	139.9	157.3	157.6	147.8	158.5	151.5	134.8	159.6	159.4
C28	129.8	127.1	111.9	111.7	104.7	100.1	102.6	117.8	114.4	108.1	129.3	122.3	104.3	116.6	127.4
C29	154.7	159.7	191.1	183.6	153.5	159.1	150.9	159.9	134.3	113.8	139.6	115.6	125.8	113.6	111.3
C30	153.9	163.0	197.8	213.1	132.0	185.9	208.0	253.3	253.7	186.8	286.3	249.5	144.9	224.3	225.2
C31	115.9	108.8	118.1	112.1	101.8	99.2	98.7	106.9	99.7	100.2	110.6	112.4	100.8	111.0	119.9
C32	128.2	173.6	121.4	116.4	86.3	87.8	104.4	112.2	134.5	110.2	143.1	141.4	153.3	180.8	145.2
C33	130.9	133.5	104.9	127.4	119.0	72.5	92.2	115.4	96.0	103.2	109.1	103.7	104.7	127.4	120.4
D	74.5	68.4	65.3	75.6	91.5	93.2	78.6	87.5	71.1	62.0	66.9	82.1	82.5	86.8	99.4
D35	74.5	68.4	65.3	75.6	91.5	93.2	78.6	87.5	71.1	62.0	66.9	82.1	82.5	86.8	99.4

* Preliminary data.

„..“ - Confidential data.