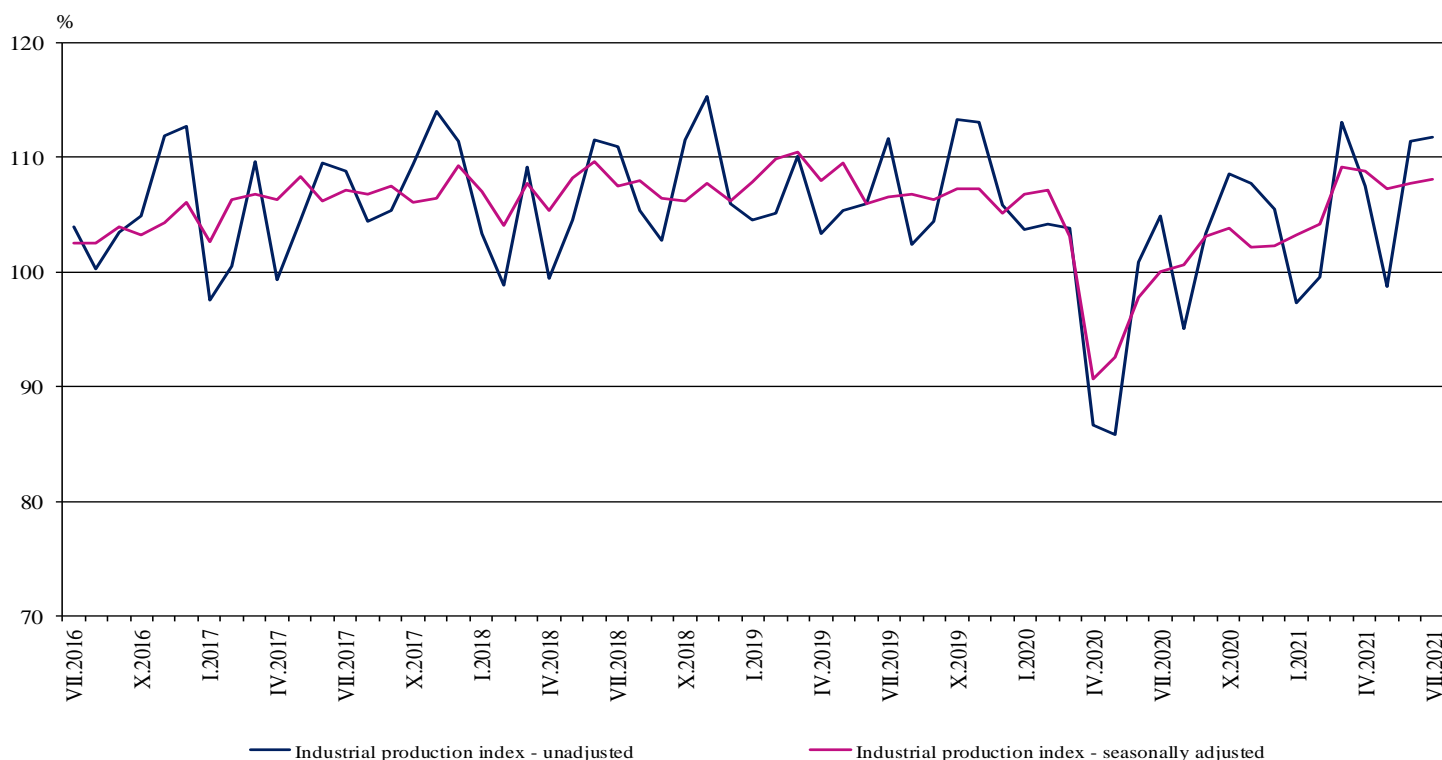


INDUSTRIAL PRODUCTION INDICES IN JULY 2021¹

According to the preliminary data in July 2021 the Industrial Production Index², seasonally adjusted³, increased by 0.3% compared to June 2021.

In July 2021, the calendar adjusted⁴ Industrial Production Index rose by 8.3% in comparison with the same month of 2020.

Figure 1. Industrial Production Indices (2015 = 100)



¹ July 2021 data are preliminary. The final data on Industrial Production and Turnover Indices for June 2021 can be found on the NSI website: <http://www.nsi.bg/en>.

² Monthly Industrial Production and Industrial turnover indices measure changes in production and turnover values of industrial enterprises. This information can be used to assess the current economic development and for short-term forecasts. Indices do not measure the actual production level, it aims to measure the average change in value of production between two points of time. Indices are compiled on the base of information collected through representative sampling survey on industrial enterprises. The sample covers enterprises with annual turnover more than 97% of total turnover in industry.

Industrial production indices are calculated at constant base year that is to say they are weighted with the structure of the value added at factor costs in the base year.

³ Seasonal adjustment is a statistical method, which eliminates the seasonal component of time series.

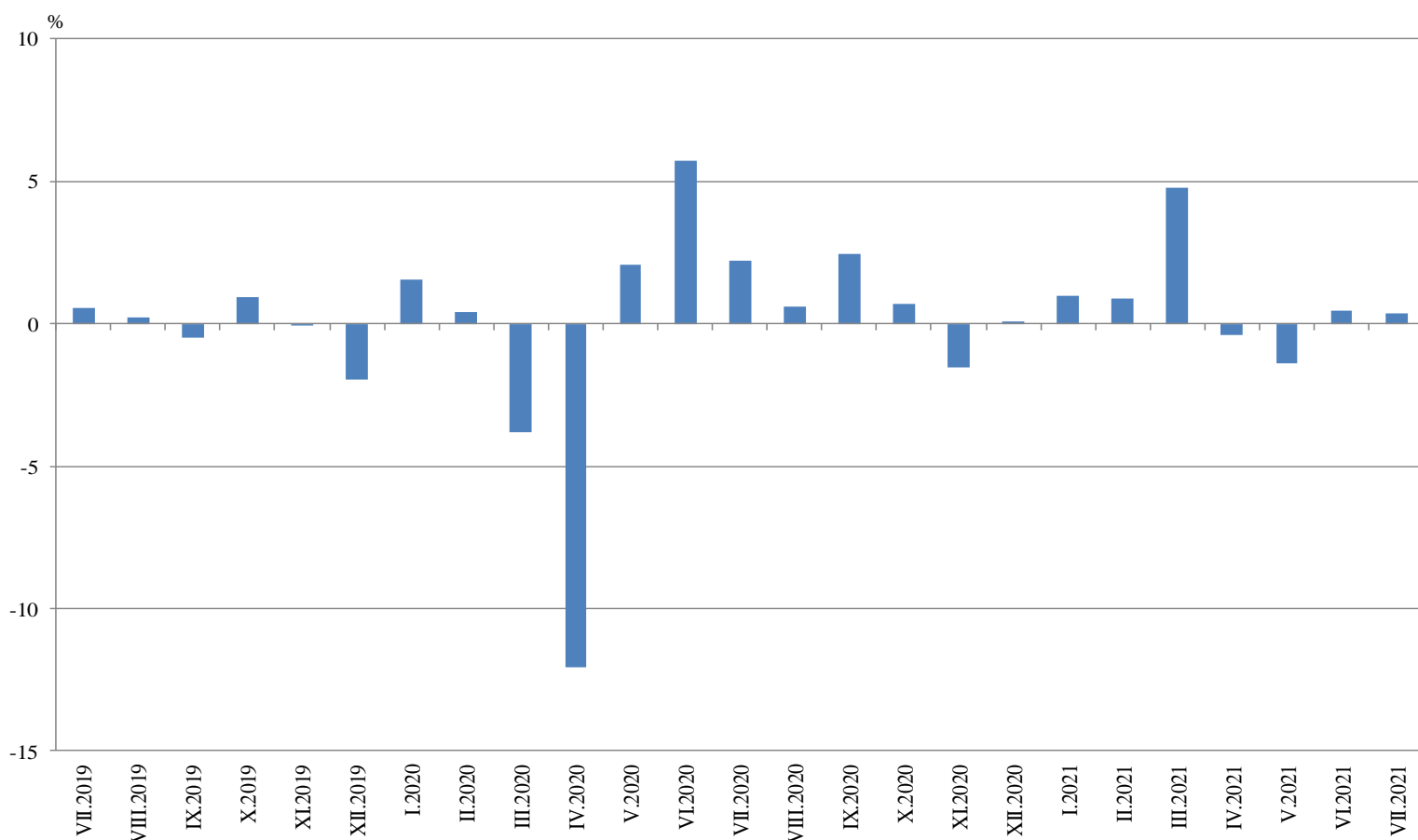
⁴ Calendar adjustment is an adjustment for variations caused by calendar effects, different number of calendar and working days in the months, national holidays and outliers (for example the presence of more non-working days in May could contribute to the decline in the production in some activities).

Monthly changes

In July 2021, compared to June 2021, the seasonally adjusted Industrial Production Index rose in the electricity, gas, steam and air conditioning supply by 9.5%, while the production fell in the mining and quarrying industry by 10.2% and in the manufacturing by 0.4%.

The most significant decrease in the manufacturing was seen in the manufacture of basic metals by 13.2%, in the manufacture of motor vehicles, trailers and semi-trailers by 11.3%, in the manufacture of rubber and plastic products by 6.0%, and in the repair and installation of machinery and equipment by 5.8%. Major increase was registered in the other manufacturing by 9.5%, in the manufacture of fabricated metal products, except machinery and equipment by 9.1%, in the manufacture of leather and related products by 6.4% and in the manufacture of beverages by 5.7%.

Figure 2. Changes of Industrial Production Indices compared to the previous month
(Seasonally adjusted)

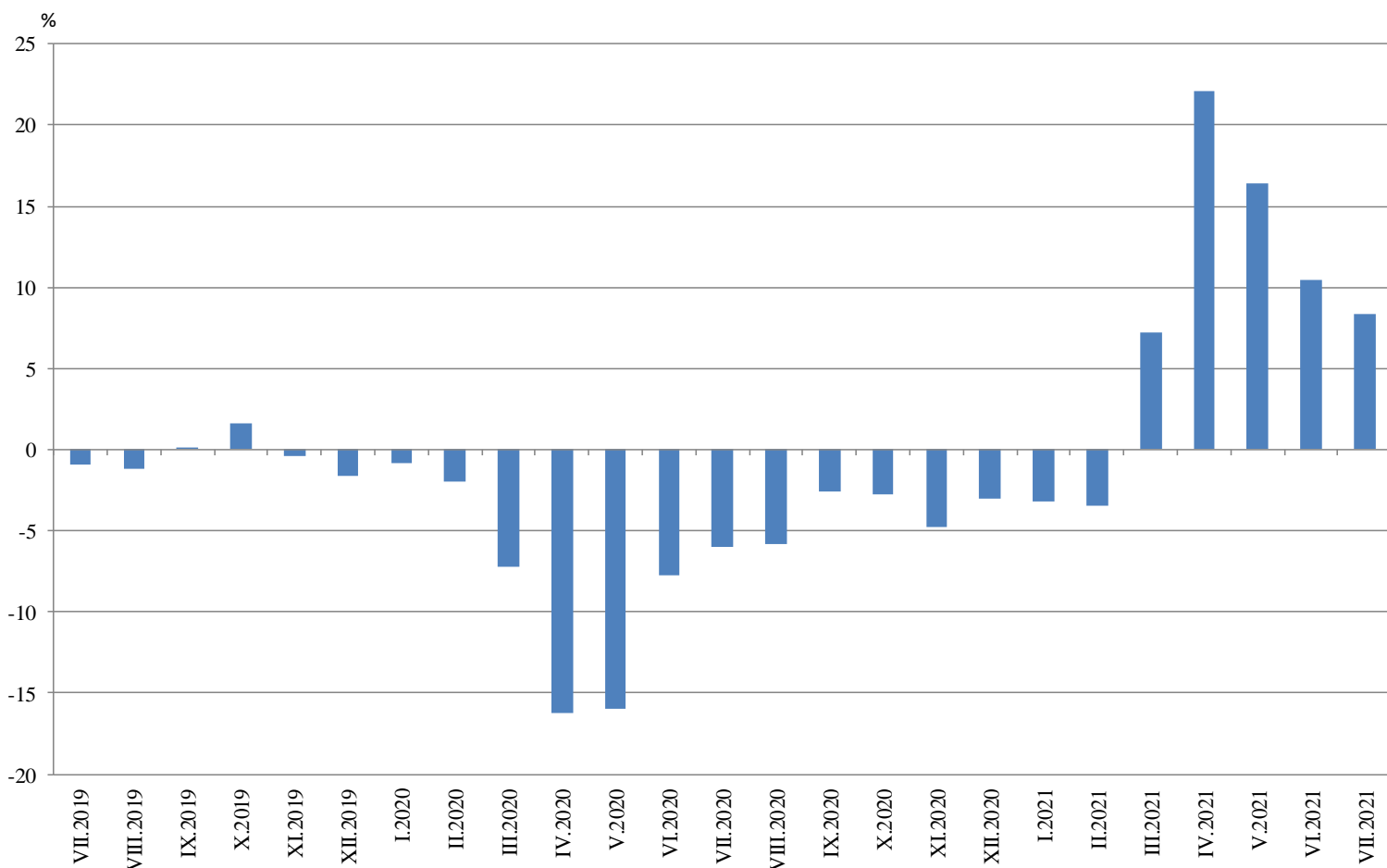


Annual changes

On annual basis in July 2021 Industrial Production Index calculated from calendar day adjusted data rose in the electricity, gas, steam and air conditioning supply by 17.1%, in the manufacturing by 7.5%, and in the mining and quarrying industry by 6.2%.

In the manufacturing, a more considerable increase compared to the same month of the previous year was reported in the manufacture of other transport equipment by 62.2%, in the manufacture of tobacco products by 59.1%, in the manufacture of computer, electronic and optical products by 41.3% in the other manufacturing by 34.6%, and in the manufacture of fabricated metal products, except machinery and equipment by 28.6%. Major decrease was seen in the manufacture of beverages by 29.8%, in the repair and installation of machinery and equipment by 18.4% and in the manufacture of basic metals by 16.4%.

Figure 3. Changes of Industrial Production Indices compared to the same month of the previous year (Calendar adjusted)



Annex

Table 1

Changes of Industrial Production Indices compared to the previous month¹

(Per cent)

Economic activities	NACE.BG - 2008	2021					
		II	III	IV	V	VI	VII*
Industry	B_TO_E36	0.9	4.8	-0.4	-1.4	0.4	0.3
Mining and quarrying	B	27.2	4.8	-5.9	3.3	4.1	-10.2
Mining of coal and lignite	B05	27.1	38.7	-2.7	-7.1	6.9	-13.1
Extraction of crude petroleum and natural gas	B06
Mining of metal ores	B07	52.2	-9.3	-8.7	1.7	10.6	-11.2
Other mining and quarrying	B08	-3.5	4.6	0.9	0.9	-4.3	3.3
Mining support service activities	B09
Manufacturing	C	-0.6	4.5	-1.0	-1.3	0.1	-0.4
Manufacture of food products	C10	-2.3	1.9	4.0	-2.1	-3.4	1.9
Manufacture of beverages	C11	-9.3	-1.9	1.4	-4.8	-4.1	5.7
Manufacture of tobacco products	C12	14.8	7.9	5.6	7.9	21.2	0.2
Manufacture of textiles	C13	2.6	-6.8	4.6	-5.1	4.8	-1.8
Manufacture of wearing apparel	C14	0.6	2.2	-3.4	-3.2	0.3	-0.5
Manufacture of leather and related products	C15	1.1	8.0	3.0	-13.1	1.8	6.4
Manufacture of wood and of products of wood and cork, except furniture; manufacture of articles of straw and plaiting materials	C16	-2.3	9.7	-4.7	6.1	-10.4	4.3
Manufacture of paper and paper products	C17	-0.1	2.9	-1.4	-3.6	9.6	4.0
Printing and reproduction of recorded media	C18	2.7	6.2	-2.5	-4.6	6.4	-0.1
Manufacture of coke and refined petroleum products	C19
Manufacture of chemicals and chemical products	C20	5.0	-1.1	-14.1	12.8	6.6	1.8
Manufacture of basic pharmaceutical products and pharmaceutical preparations	C21	-6.0	11.8	-10.8	5.6	-5.7	2.6
Manufacture of rubber and plastic products	C22	1.5	-2.3	3.7	-1.7	0.0	-6.0
Manufacture of other non-metallic mineral products	C23	-0.3	1.9	-2.9	7.7	-2.2	-1.8
Manufacture of basic metals	C24	-0.7	2.4	1.9	-5.1	-3.9	-13.2
Manufacture of fabricated metal products, except machinery and equipment	C25	-9.9	0.7	10.3	-1.4	-8.4	9.1
Manufacture of computer, electronic and optical products	C26	-5.7	7.3	0.6	5.2	-2.3	1.2
Manufacture of electrical equipment	C27	-2.4	6.4	7.0	-3.1	-2.7	-1.9
Manufacture of machinery and equipment n.e.c.	C28	-1.6	5.4	-2.1	1.2	8.2	-3.4
Manufacture of motor vehicles, trailers and semi-trailers	C29	-4.8	-1.0	-12.6	-8.1	9.2	-11.3
Manufacture of other transport equipment	C30	3.0	12.9	4.4	-14.6	23.9	-0.2
Manufacture of furniture	C31	-5.0	-2.4	-1.4	-0.9	2.3	0.6
Other manufacturing	C32	16.6	-3.0	23.6	-18.0	12.2	9.5
Repair and installation of machinery and equipment	C33	6.9	6.9	-6.1	4.5	-5.5	-5.8
Electricity, gas, steam and air conditioning supply	D	-1.8	6.6	1.7	-2.5	0.3	9.5
Electricity, gas, steam and air conditioning Supply	D35	-1.8	6.6	1.7	-2.5	0.3	9.5

¹ Seasonally adjusted.

* Preliminary data.

„..“ - Confidential data.

Table 2
Changes of Industrial Production Indices compared to the same month of the previous year¹
(Per cent)

Economic activities	NACE.BG - 2008	2021					
		II	III	IV	V	VI	VII*
Industry	B_TO_E36	-3.4	7.2	22.1	16.4	10.5	8.3
Mining and quarrying	B	0.3	4.9	4.6	14.0	7.3	6.2
Mining of coal and lignite	B05	-26.1	7.9	3.8	35.1	25.3	16.8
Extraction of crude petroleum and natural gas	B06
Mining of metal ores	B07	9.0	-5.7	-8.9	-11.0	-5.4	-9.2
Other mining and quarrying	B08	35.2	41.9	64.1	69.0	37.0	46.3
Mining support service activities	B09
Manufacturing	C	-4.4	9.3	26.2	18.7	12.2	7.5
Manufacture of food products	C10	-1.3	-1.5	17.2	10.7	0.1	5.8
Manufacture of beverages	C11	-42.9	-34.7	-20.1	-30.8	-36.8	-29.8
Manufacture of tobacco products	C12	-6.8	-2.1	2.0	29.0	58.7	59.1
Manufacture of textiles	C13	14.2	17.3	36.9	7.9	16.9	12.4
Manufacture of wearing apparel	C14	-8.5	7.7	5.8	-18.1	-1.5	-5.8
Manufacture of leather and related products	C15	-24.4	12.3	20.5	-8.7	-15.8	-3.9
Manufacture of wood and of products of wood and cork, except furniture; manufacture of articles of straw and plaiting materials	C16	1.3	25.8	46.6	47.6	14.7	18.3
Manufacture of paper and paper products	C17	-1.0	1.8	7.7	5.9	12.7	24.4
Printing and reproduction of recorded media	C18	-1.5	18.4	42.6	22.9	26.7	17.1
Manufacture of coke and refined petroleum products	C19
Manufacture of chemicals and chemical products	C20	-3.8	-3.7	-9.8	3.0	5.5	8.5
Manufacture of basic pharmaceutical products and pharmaceutical preparations	C21	-0.7	2.1	-16.7	-2.7	-10.2	-1.4
Manufacture of rubber and plastic products	C22	14.3	12.4	30.0	24.7	22.7	1.8
Manufacture of other non-metallic mineral products	C23	-7.4	7.6	33.5	36.2	19.1	1.3
Manufacture of basic metals	C24	-2.9	8.0	20.5	-0.5	-10.8	-16.4
Manufacture of fabricated metal products, except machinery and equipment	C25	-8.9	3.9	32.8	25.2	13.1	28.6
Manufacture of computer, electronic and optical products	C26	17.2	47.8	43.0	49.0	46.2	41.3
Manufacture of electrical equipment	C27	7.2	24.2	45.7	41.8	23.0	12.2
Manufacture of machinery and equipment n.e.c.	C28	-6.4	11.1	41.1	43.4	42.6	23.2
Manufacture of motor vehicles, trailers and semi-trailers	C29	-2.3	23.4	259.8	96.0	28.0	-8.8
Manufacture of other transport equipment	C30	1.5	30.8	39.2	12.8	70.3	62.2
Manufacture of furniture	C31	2.6	31.7	54.4	22.2	3.9	2.9
Other manufacturing	C32	-43.1	38.0	88.1	38.9	52.3	34.6
Repair and installation of machinery and equipment	C33	-15.8	-16.8	-1.7	22.9	0.4	-18.4
Electricity, gas, steam and air conditioning supply	D	-5.6	-1.7	9.6	8.4	2.9	17.1
Electricity, gas, steam and air conditioning supply	D35	-5.6	-1.7	9.6	8.4	2.9	17.1

¹ Calendar adjusted.

* Preliminary data.

„..“ - Confidential data.

Table 3

Industrial Production Indices
(Seasonally adjusted, 2015 = 100)

NACE.BG - 2008	2020						2021						
	VII	VIII	IX	X	XI	XII	I	II	III	IV	V	VI	VII*
B_TO_E36	100.0	100.6	103.1	103.8	102.2	102.3	103.3	104.2	109.2	108.8	107.3	107.7	108.1
B	99.2	107.8	103.4	94.9	87.8	100.1	87.1	110.7	116.1	109.2	112.8	117.5	105.5
B05	63.5	71.2	60.1	53.8	51.9	55.6	49.3	62.7	87.0	84.6	78.6	84.0	73.0
B06
B07	131.8	133.9	141.1	130.4	96.8	128.2	95.5	145.5	132.0	120.5	122.5	135.5	120.3
B08	100.5	109.6	107.7	106.4	128.5	143.4	144.8	139.8	146.3	147.5	148.8	142.4	147.1
B09
C	106.2	106.8	110.4	112.3	111.1	110.8	113.2	112.5	117.6	116.4	114.9	115.0	114.6
C10	106.8	98.9	104.6	106.2	105.9	103.9	113.2	110.5	112.6	117.1	114.7	110.8	112.9
C11	97.4	96.1	99.9	98.0	90.2	81.2	75.9	68.8	67.5	68.5	65.2	62.5	66.1
C12	34.7	35.8	32.7	32.0	34.1	37.3	29.2	33.5	36.1	38.1	41.1	49.9	50.0
C13	96.2	97.2	97.1	105.6	97.3	102.8	110.9	113.9	106.1	111.0	105.3	110.3	108.3
C14	73.3	71.6	71.2	71.7	67.7	66.8	71.8	72.2	73.8	71.3	69.0	69.3	68.9
C15	73.0	68.8	69.1	73.1	72.2	70.2	67.9	68.6	74.1	76.3	66.4	67.5	71.9
C16	71.1	73.2	74.5	74.1	78.6	78.4	83.0	81.1	89.0	84.9	90.0	80.7	84.2
C17	87.4	88.6	87.7	91.6	96.9	92.1	95.9	95.7	98.5	97.2	93.7	102.7	106.8
C18	100.3	101.8	102.2	104.2	100.9	99.6	108.0	110.9	117.7	114.7	109.4	116.4	116.2
C19
C20	115.1	116.7	110.0	114.5	113.3	112.7	113.3	119.0	117.7	101.2	114.1	121.7	123.8
C21	114.1	111.8	113.6	121.7	119.6	122.9	117.9	110.8	123.9	110.5	116.7	110.0	112.9
C22	139.7	141.2	144.9	145.2	141.8	148.5	152.9	155.1	151.6	157.1	154.5	154.5	145.2
C23	114.0	107.4	112.0	109.7	114.7	107.8	113.2	112.8	115.0	111.6	120.3	117.6	115.5
C24	113.9	115.3	112.4	110.0	111.0	115.1	114.6	113.7	116.5	118.7	112.7	108.3	94.0
C25	104.1	103.1	125.7	129.6	118.5	117.1	135.6	122.1	123.0	135.7	133.7	122.4	133.6
C26	148.7	146.5	149.3	170.5	183.7	166.3	198.0	186.6	200.2	201.5	211.9	207.1	209.5
C27	131.4	131.2	133.7	138.6	133.5	141.2	144.8	141.4	150.5	161.0	155.9	151.8	148.9
C28	95.1	99.8	107.1	105.4	103.6	108.9	108.6	106.8	112.6	110.3	111.6	120.7	116.7
C29	124.1	148.8	149.3	171.3	167.6	182.1	162.9	155.2	153.7	134.4	123.5	134.9	119.7
C30	171.0	198.5	187.8	196.7	195.5	161.0	186.7	192.2	216.9	226.5	193.4	239.7	239.2
C31	102.8	106.6	106.9	109.7	104.7	104.4	114.5	108.7	106.1	104.6	103.7	106.1	106.7
C32	104.5	107.1	115.4	108.7	107.5	96.8	98.8	115.1	111.6	138.0	113.1	126.9	138.9
C33	121.1	95.6	94.3	100.9	111.1	90.3	99.8	106.6	114.0	107.1	111.9	105.7	99.6
D	74.6	74.1	75.4	73.1	72.3	73.1	73.8	72.5	77.3	78.6	76.6	76.8	84.1
35	74.6	74.1	75.4	73.1	72.3	73.1	73.8	72.5	77.3	78.6	76.6	76.8	84.1

* Preliminary data.

...“ - Confidential data.

Table 4

**Industrial Production Indices
(Calendar adjusted, 2015 = 100)**

NACE.BG - 2008	2018	2019	2020						2021						
	VII	VII	VII	VIII	IX	X	XI	XII	I	II	III	IV	V	VI	VII*
B_TO_E36	111.2	110.1	103.5	96.7	103.3	108.8	108.4	104.3	99.6	100.2	112.1	105.5	102.4	110.4	112.1
B	93.9	100.6	97.6	105.7	107.8	107.1	94.1	109.9	84.6	105.5	112.1	101.9	105.7	113.9	103.7
B05	75.1	70.7	56.5	67.8	65.4	74.8	64.9	73.2	63.2	64.7	79.5	66.9	61.0	66.2	66.0
B06
B07	114.6	125.8	131.8	133.9	141.1	130.4	96.8	128.2	95.5	140.2	131.0	120.5	120.6	144.4	119.7
B08	96.6	111.7	107.3	117.8	117.3	120.3	146.2	146.6	100.0	108.6	143.2	143.8	152.6	153.1	157.0
B09
C	121.0	119.3	112.3	102.4	111.9	120.2	118.6	107.0	102.8	105.2	118.9	114.7	113.2	121.3	120.7
C10	105.4	108.8	108.0	100.0	110.7	116.9	112.7	108.0	100.1	97.2	112.1	110.9	112.9	114.0	114.2
C11	121.8	126.1	121.8	123.6	115.3	93.6	81.1	75.2	45.3	46.2	58.3	61.4	68.0	75.2	85.6
C12	57.5	56.9	39.7	32.7	32.6	36.4	39.3	40.7	17.7	22.5	36.2	44.8	46.6	60.2	63.1
C13	104.8	97.3	99.7	76.6	93.5	111.3	101.7	90.2	101.5	116.7	116.0	113.2	115.7	122.3	112.0
C14	106.8	97.9	86.0	69.3	70.4	72.6	68.2	63.4	76.1	72.9	71.4	65.5	62.3	73.9	81.0
C15	112.0	102.1	88.6	57.5	68.2	81.9	81.6	61.9	66.8	66.4	76.0	71.9	61.9	73.0	85.1
C16	83.1	82.2	76.4	72.2	78.0	81.0	85.2	74.5	69.0	71.5	87.7	83.8	91.5	85.8	90.4
C17	106.7	101.8	87.1	85.3	84.8	94.8	99.2	88.0	96.2	94.8	103.2	96.7	94.9	104.9	108.4
C18	101.2	119.7	100.3	95.8	100.5	112.8	115.9	104.4	98.2	103.8	118.8	113.3	109.9	120.2	117.4
C19
C20	116.9	119.9	117.9	112.8	109.4	116.3	114.8	109.9	105.1	112.4	128.4	101.5	113.8	126.5	127.9
C21	113.0	127.0	114.2	97.1	109.9	120.5	131.1	126.6	114.5	98.6	139.4	108.7	116.6	113.1	112.6
C22	144.0	141.3	149.6	135.0	150.3	163.2	151.1	131.3	138.7	149.1	157.7	150.5	148.9	160.0	152.2
C23	113.3	117.0	124.3	113.1	120.2	122.8	124.2	95.8	80.5	91.1	112.3	114.9	129.4	127.4	125.9
C24	122.3	116.1	114.3	110.7	111.1	107.7	117.6	114.2	115.2	108.8	123.5	123.4	106.8	104.9	95.6
C25	156.7	126.6	110.7	101.6	129.2	135.5	130.8	128.0	103.0	112.3	124.6	131.3	128.5	129.2	142.3
C26	149.6	158.0	150.4	129.2	143.1	182.2	200.1	178.5	190.1	178.6	211.4	196.4	204.7	216.1	212.5
C27	118.0	126.0	135.8	119.2	137.5	154.0	147.4	125.8	138.0	139.9	157.3	157.6	147.8	158.5	152.4
C28	121.9	122.8	99.2	86.7	107.9	111.9	111.7	104.7	100.1	102.6	117.8	114.4	108.1	129.3	122.2
C29	134.9	141.8	126.5	128.8	153.7	191.1	183.6	153.5	159.1	150.9	159.9	134.3	113.8	139.6	115.3
C30	115.7	146.9	153.8	163.9	159.6	197.8	213.1	132.0	185.9	208.0	253.3	253.7	186.8	286.3	249.5
C31	114.3	110.3	108.9	105.8	109.5	118.1	112.1	101.8	99.2	98.7	106.9	99.7	100.2	110.6	112.0
C32	132.0	167.4	105.6	106.7	121.2	121.4	116.4	86.3	87.8	104.4	112.2	134.5	110.2	143.1	142.1
C33	127.8	122.6	125.6	92.8	97.9	104.9	127.4	119.0	72.5	92.2	115.4	96.0	103.2	109.1	102.5
D	79.1	77.0	69.8	69.0	67.0	65.3	75.6	91.5	93.2	78.6	87.5	71.1	62.0	66.9	81.8
D35	79.1	77.0	69.8	69.0	67.0	65.3	75.6	91.5	93.2	78.6	87.5	71.1	62.0	66.9	81.8

* Preliminary data.

„..“ - Confidential data.