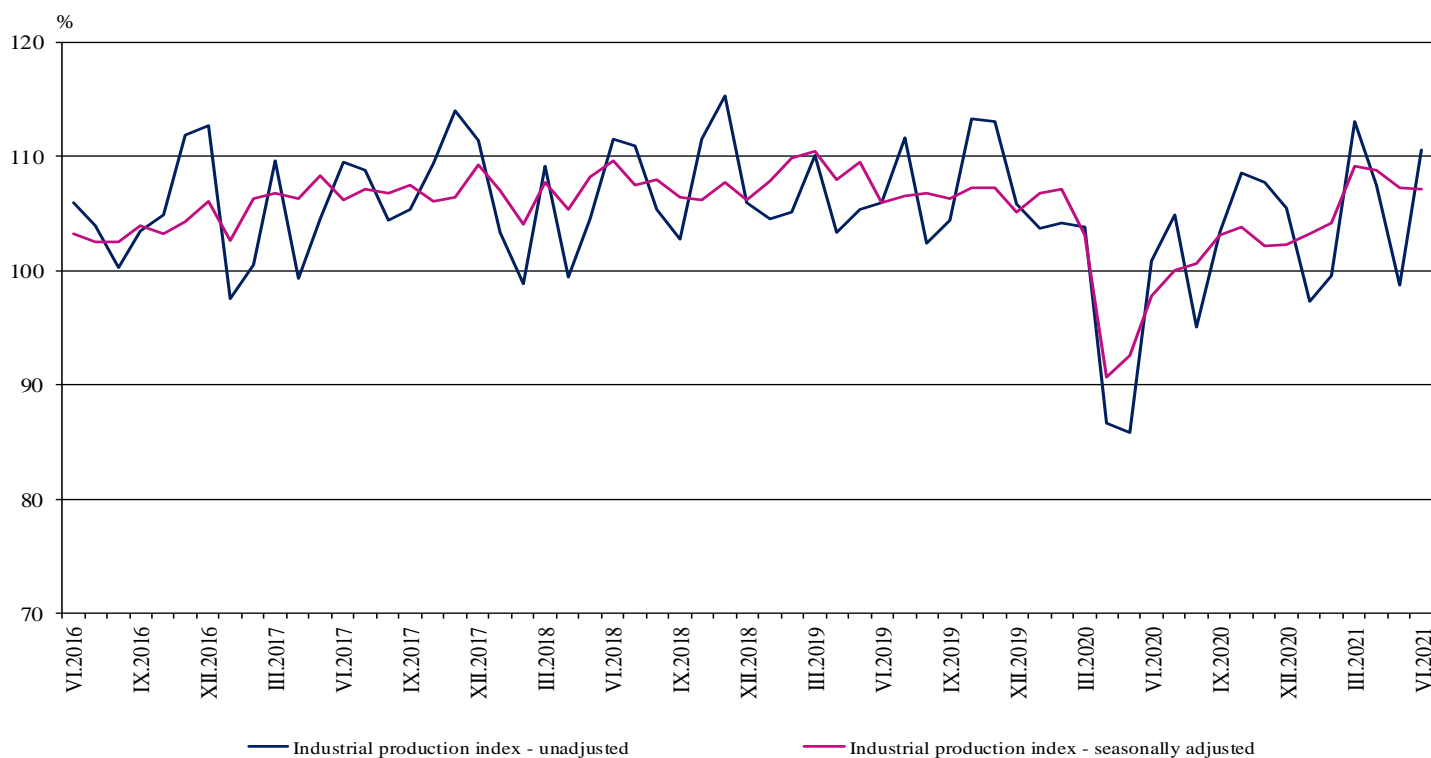


INDUSTRIAL PRODUCTION INDICES IN JUNE 2021¹

According to the preliminary data in June 2021 the Industrial Production Index², seasonally adjusted³, decreased by 0.1 % compared to May 2021.

In June 2021, the calendar adjusted⁴ Industrial Production Index rose by 9.7% in comparison with the same month of 2020.

Figure 1. Industrial Production Indices (2015 = 100)



¹ June 2021 data are preliminary. The final data on Industrial Production and Turnover Indices for May 2021 can be found on the NSI website: <http://www.nsi.bg/en>.

² Monthly Industrial Production and Industrial turnover indices measure changes in production and turnover values of industrial enterprises. This information can be used to assess the current economic development and for short-term forecasts. Indices do not measure the actual production level, it aims to measure the average change in value of production between two points of time. Indices are compiled on the base of information collected through representative sampling survey on industrial enterprises. The sample covers enterprises with annual turnover more than 97% of total turnover in industry.

Industrial production indices are calculated at constant base year that is to say they are weighted with the structure of the value added at factor costs in the base year.

³ Seasonal adjustment is a statistical method, which eliminates the seasonal component of time series.

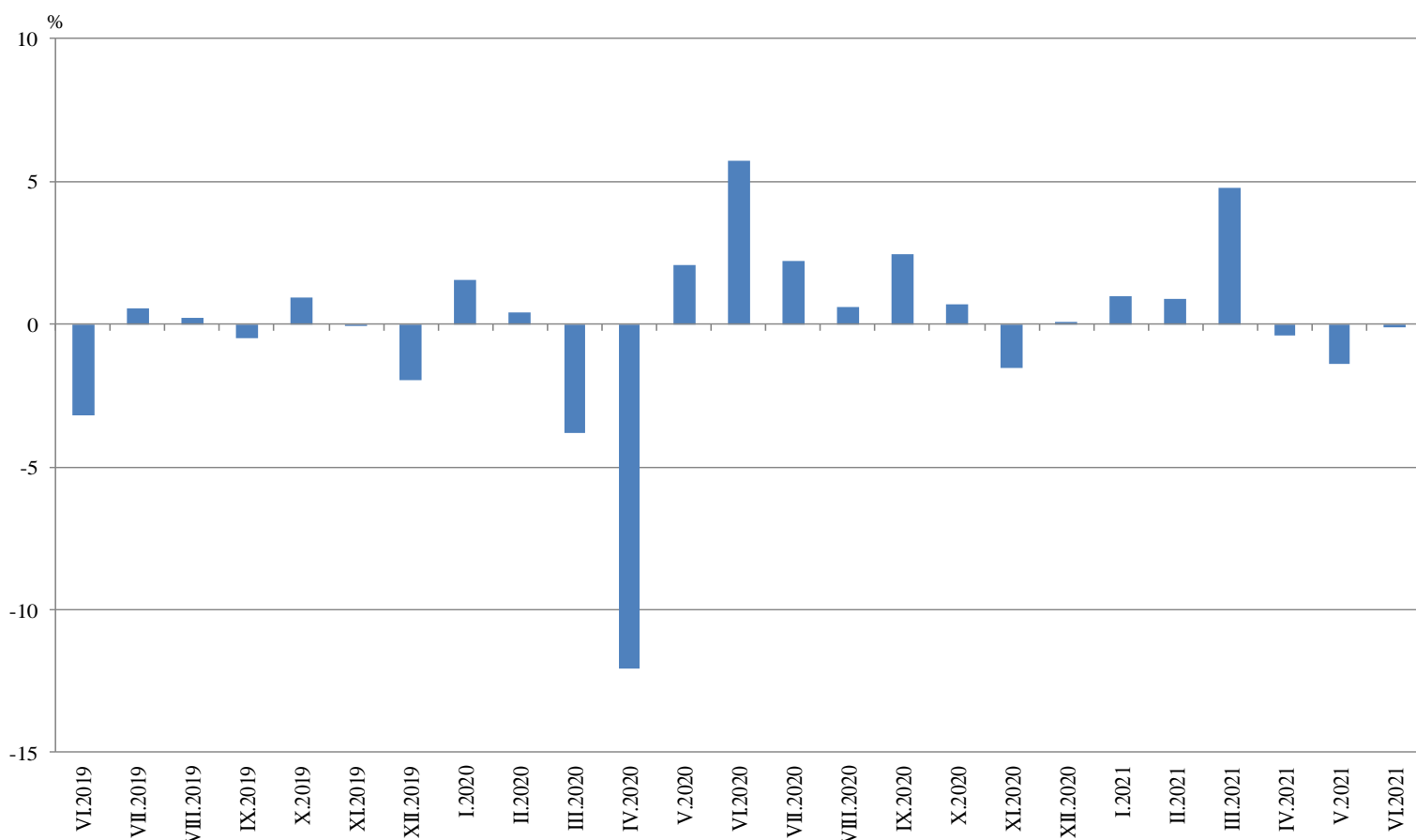
⁴ Calendar adjustment is an adjustment for variations caused by calendar effects, different number of calendar and working days in the months, national holidays and outliers (for example the presence of more non-working days in May could contribute to the decline in the production in some activities).

Monthly changes

In June 2021, compared to May 2021, the seasonally adjusted Industrial Production Index fell in the electricity, gas, steam and air conditioning supply by 1.6%, and in the manufacturing by 0.3%, while the production rose in the mining and quarrying industry by 3.9%.

The most significant decrease in the manufacturing was seen in the manufacture of wood and of products of wood and cork, except furniture; manufacture of articles of straw and plaiting materials - by 9.8%, in the manufacture of fabricated metal products, except machinery and equipment by 8.8%, in the manufacture of beverages by 6.1%, in the manufacture of basic pharmaceutical products and pharmaceutical preparations and in the repair and installation of machinery and equipment by 5.1%. Major increase was observed in the manufacture of other transport equipment by 35.9%, in the manufacture of tobacco products by 19.6%, in the other manufacturing by 10.1%, and in the printing and reproduction of recorded media by 8.3%.

**Figure 2. Changes of Industrial Production Indices compared to the previous month
(Seasonally adjusted)**

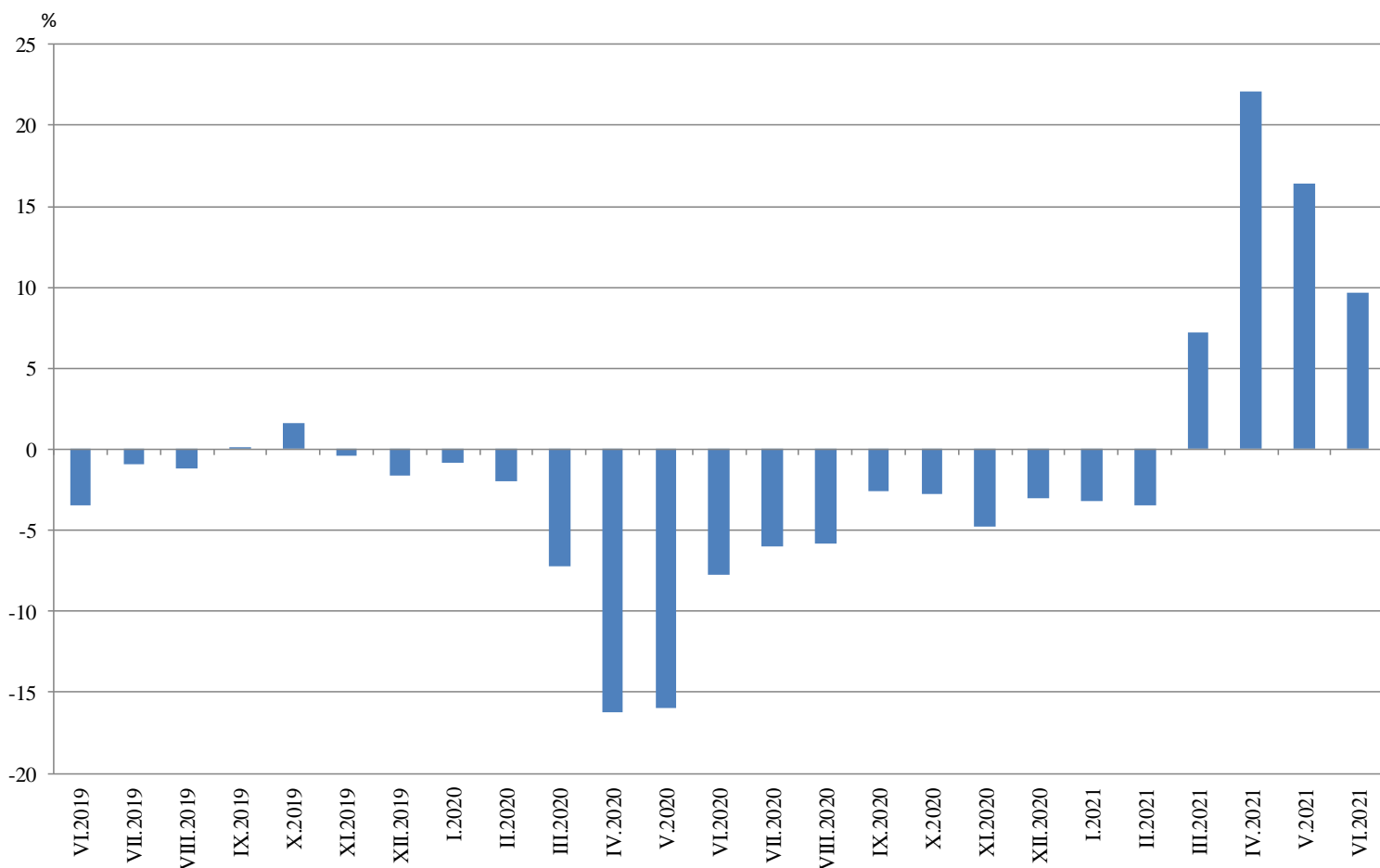


Annual changes

On annual basis in June 2021 Industrial Production Index calculated from calendar adjusted data rose in the manufacturing by 11.5%, in the mining and quarrying industry by 7.0%, and in the electricity, gas, steam and air conditioning supply by 0.9%.

In the manufacturing, a more considerable increase compared to the same month of the previous year was registered in the manufacture of other transport equipment by 68.2%, in the manufacture of tobacco products by 58.7%, in the other manufacturing by 49.7%, in the manufacture of computer, electronic and optical products by 45.3%. Major decrease was seen in the manufacture of beverages by 38.2%, and in the manufacture of leather and related products by 14.9%, in the manufacture of basic metals by 12.2%, and in the manufacture of basic pharmaceutical products and pharmaceutical preparations by 9.6%.

Figure 3. Changes of Industrial Production Indices compared to the same month of the previous year (Calendar adjusted)



Annex

Table 1

Changes of Industrial Production Indices compared to the previous month¹

(Per cent)

Economic activities	NACE.BG - 2008	2021					
		I	II	III	IV	V	VI*
Industry	B_TO_E36	1.0	0.9	4.8	-0.4	-1.4	-0.1
Mining and quarrying	B	-13.0	27.2	4.8	-5.9	3.3	3.9
Mining of coal and lignite	B05	-11.4	27.1	38.7	-2.7	-7.1	7.2
Extraction of crude petroleum and natural gas	B06
Mining of metal ores	B07	-25.4	52.2	-9.3	-8.7	1.7	10.5
Other mining and quarrying	B08	1.0	-3.5	4.6	0.9	0.9	-4.8
Mining support service activities	B09
Manufacturing	C	2.1	-0.6	4.5	-1.0	-1.3	-0.3
Manufacture of food products	C10	8.9	-2.3	1.9	4.0	-2.1	-4.5
Manufacture of beverages	C11	-6.5	-9.3	-1.9	1.4	-4.8	-6.1
Manufacture of tobacco products	C12	-21.9	14.8	7.9	5.6	7.9	19.6
Manufacture of textiles	C13	8.0	2.6	-6.8	4.6	-5.1	4.9
Manufacture of wearing apparel	C14	7.4	0.6	2.2	-3.4	-3.2	-0.1
Manufacture of leather and related products	C15	-3.3	1.1	8.0	3.0	-13.1	2.0
Manufacture of wood and of products of wood and cork, except furniture; manufacture of articles of straw and plaiting materials	C16	5.9	-2.3	9.7	-4.7	6.1	-9.8
Manufacture of paper and paper products	C17	4.1	-0.1	2.9	-1.4	-3.6	7.3
Printing and reproduction of recorded media	C18	8.4	2.7	6.2	-2.5	-4.6	8.3
Manufacture of coke and refined petroleum products	C19
Manufacture of chemicals and chemical products	C20	0.5	5.0	-1.1	-14.1	12.8	4.4
Manufacture of basic pharmaceutical products and pharmaceutical preparations	C21	-4.1	-6.0	11.8	-10.8	5.6	-5.1
Manufacture of rubber and plastic products	C22	3.0	1.5	-2.3	3.7	-1.7	1.0
Manufacture of other non-metallic mineral products	C23	5.0	-0.3	1.9	-2.9	7.7	-2.9
Manufacture of basic metals	C24	-0.5	-0.7	2.4	1.9	-5.1	-3.2
Manufacture of fabricated metal products, except machinery and equipment	C25	15.8	-9.9	0.7	10.3	-1.4	-8.8
Manufacture of computer, electronic and optical products	C26	19.1	-5.7	7.3	0.6	5.2	-2.8
Manufacture of electrical equipment	C27	2.6	-2.4	6.4	7.0	-3.1	-2.6
Manufacture of machinery and equipment n.e.c.	C28	-0.3	-1.6	5.4	-2.1	1.2	7.4
Manufacture of motor vehicles, trailers and semi-trailers	C29	-10.5	-4.8	-1.0	-12.6	-8.1	5.4
Manufacture of other transport equipment	C30	15.9	3.0	12.9	4.4	-14.6	35.9
Manufacture of furniture	C31	9.6	-5.0	-2.4	-1.4	-0.9	1.8
Other manufacturing	C32	2.0	16.6	-3.0	23.6	-18.0	10.1
Repair and installation of machinery and equipment	C33	10.6	6.9	6.9	-6.1	4.5	-5.1
Electricity, gas, steam and air conditioning supply	D	0.9	-1.8	6.6	1.7	-2.5	-1.6
Electricity, gas, steam and air conditioning Supply	D35	0.9	-1.8	6.6	1.7	-2.5	-1.6

¹ Seasonally adjusted.

* Preliminary data.

„..“ - Confidential data.

Table 2
Changes of Industrial Production Indices compared to the same month of the previous year¹
(Per cent)

Economic activities	NACE.BG - 2008	2021					
		I	II	III	IV	V	VI*
Industry	B_TO_E36	-3.2	-3.4	7.2	22.1	16.4	9.7
Mining and quarrying	B	-17.5	0.3	4.9	4.6	14.0	7.0
Mining of coal and lignite	B05	-22.4	-26.1	7.9	3.8	35.1	25.3
Extraction of crude petroleum and natural gas	B06
Mining of metal ores	B07	-25.0	9.0	-5.7	-8.9	-11.0	-5.7
Other mining and quarrying	B08	14.3	35.2	41.9	64.1	69.0	36.2
Mining support service activities	B09
Manufacturing	C	-2.3	-4.4	9.3	26.2	18.7	11.5
Manufacture of food products	C10	-2.8	-1.3	-1.5	17.2	10.7	-1.1
Manufacture of beverages	C11	-41.0	-42.9	-34.7	-20.1	-30.8	-38.2
Manufacture of tobacco products	C12	-27.9	-6.8	-2.1	2.0	29.0	58.7
Manufacture of textiles	C13	3.7	14.2	17.3	36.9	7.9	17.0
Manufacture of wearing apparel	C14	-7.9	-8.5	7.7	5.8	-18.1	-2.0
Manufacture of leather and related products	C15	-27.5	-24.4	12.3	20.5	-8.7	-14.9
Manufacture of wood and of products of wood and cork, except furniture; manufacture of articles of straw and plaiting materials	C16	-1.4	1.3	25.8	46.6	47.6	15.7
Manufacture of paper and paper products	C17	2.8	-1.0	1.8	7.7	5.9	13.1
Printing and reproduction of recorded media	C18	-0.7	-1.5	18.4	42.6	22.9	29.7
Manufacture of coke and refined petroleum products	C19
Manufacture of chemicals and chemical products	C20	-7.3	-3.8	-3.7	-9.8	3.0	3.3
Manufacture of basic pharmaceutical products and pharmaceutical preparations	C21	3.3	-0.7	2.1	-16.7	-2.7	-9.6
Manufacture of rubber and plastic products	C22	14.3	14.3	12.4	30.0	24.7	22.7
Manufacture of other non-metallic mineral products	C23	-9.9	-7.4	7.6	33.5	36.2	18.1
Manufacture of basic metals	C24	-1.7	-2.9	8.0	20.5	-0.5	-12.2
Manufacture of fabricated metal products, except machinery and equipment	C25	8.9	-8.9	3.9	32.8	25.2	12.7
Manufacture of computer, electronic and optical products	C26	33.0	17.2	47.8	43.0	49.0	45.3
Manufacture of electrical equipment	C27	18.1	7.2	24.2	45.7	41.8	22.3
Manufacture of machinery and equipment n.e.c.	C28	-6.4	-6.4	11.1	41.1	43.4	41.3
Manufacture of motor vehicles, trailers and semi-trailers	C29	0.8	-2.3	23.4	259.8	96.0	27.2
Manufacture of other transport equipment	C30	3.7	1.5	30.8	39.2	12.8	68.2
Manufacture of furniture	C31	8.1	2.6	31.7	54.4	22.2	3.3
Other manufacturing	C32	-45.3	-43.1	38.0	88.1	38.9	49.7
Repair and installation of machinery and equipment	C33	-28.5	-15.8	-16.8	-1.7	22.9	0.6
Electricity, gas, steam and air conditioning supply	D	-1.7	-5.6	-1.7	9.6	8.4	0.9
Electricity, gas, steam and air conditioning supply	D35	-1.7	-5.6	-1.7	9.6	8.4	0.9

¹ Calendar adjusted.

* Preliminary data.

„..“ - Confidential data.

Table 3

Industrial Production Indices
(Seasonally adjusted, 2015 = 100)

NACE.BG - 2008	2020							2021					
	VI	VII	VIII	IX	X	XI	XII	I	II	III	IV	V	VI*
B_TO_E36	97.8	100.0	100.6	103.1	103.8	102.2	102.3	103.3	104.2	109.2	108.8	107.3	107.1
B	109.9	99.2	107.8	103.4	94.9	87.8	100.1	87.1	110.7	116.1	109.2	112.8	117.3
B05	71.2	63.5	71.2	60.1	53.8	51.9	55.6	49.3	62.7	87.0	84.6	78.6	84.3
B06
B07	152.7	131.8	133.9	141.1	130.4	96.8	128.2	95.5	145.5	132.0	120.5	122.5	135.4
B08	103.5	100.5	109.6	107.7	106.4	128.5	143.4	144.8	139.8	146.3	147.5	148.8	141.7
B09
C	102.6	106.2	106.8	110.4	112.3	111.1	110.8	113.2	112.5	117.6	116.4	114.9	114.7
C10	110.3	106.8	98.9	104.6	106.2	105.9	103.9	113.2	110.5	112.6	117.1	114.7	109.6
C11	96.8	97.4	96.1	99.9	98.0	90.2	81.2	75.9	68.8	67.5	68.5	65.2	61.2
C12	35.6	34.7	35.8	32.7	32.0	34.1	37.3	29.2	33.5	36.1	38.1	41.1	49.2
C13	94.7	96.2	97.2	97.1	105.6	97.3	102.8	110.9	113.9	106.1	111.0	105.3	110.5
C14	70.9	73.3	71.6	71.2	71.7	67.7	66.8	71.8	72.2	73.8	71.3	69.0	69.0
C15	74.3	73.0	68.8	69.1	73.1	72.2	70.2	67.9	68.6	74.1	76.3	66.4	67.7
C16	69.8	71.1	73.2	74.5	74.1	78.6	78.4	83.0	81.1	89.0	84.9	90.0	81.2
C17	91.3	87.4	88.6	87.7	91.6	96.9	92.1	95.9	95.7	98.5	97.2	93.7	100.5
C18	93.9	100.3	101.8	102.2	104.2	100.9	99.6	108.0	110.9	117.7	114.7	109.4	118.5
C19
C20	115.8	115.1	116.7	110.0	114.5	113.3	112.7	113.3	119.0	117.7	101.2	114.1	119.2
C21	119.6	114.1	111.8	113.6	121.7	119.6	122.9	117.9	110.8	123.9	110.5	116.7	110.8
C22	126.8	139.7	141.2	144.9	145.2	141.8	148.5	152.9	155.1	151.6	157.1	154.5	156.1
C23	98.9	114.0	107.4	112.0	109.7	114.7	107.8	113.2	112.8	115.0	111.6	120.3	116.8
C24	116.0	113.9	115.3	112.4	110.0	111.0	115.1	114.6	113.7	116.5	118.7	112.7	109.1
C25	107.5	104.1	103.1	125.7	129.6	118.5	117.1	135.6	122.1	123.0	135.7	133.7	121.9
C26	142.3	148.7	146.5	149.3	170.5	183.7	166.3	198.0	186.6	200.2	201.5	211.9	205.9
C27	123.5	131.4	131.2	133.7	138.6	133.5	141.2	144.8	141.4	150.5	161.0	155.9	151.9
C28	86.2	95.1	99.8	107.1	105.4	103.6	108.9	108.6	106.8	112.6	110.3	111.6	119.8
C29	101.3	124.1	148.8	149.3	171.3	167.6	182.1	162.9	155.2	153.7	134.4	123.5	130.2
C30	170.0	171.0	198.5	187.8	196.7	195.5	161.0	186.7	192.2	216.9	226.5	193.4	262.8
C31	100.0	102.8	106.6	106.9	109.7	104.7	104.4	114.5	108.7	106.1	104.6	103.7	105.5
C32	83.5	104.5	107.1	115.4	108.7	107.5	96.8	98.8	115.1	111.6	138.0	113.1	124.5
C33	105.4	121.1	95.6	94.3	100.9	111.1	90.3	99.8	106.6	114.0	107.1	111.9	106.2
D	74.5	74.6	74.1	75.4	73.1	72.3	73.1	73.8	72.5	77.3	78.6	76.6	75.4
35	74.5	74.6	74.1	75.4	73.1	72.3	73.1	73.8	72.5	77.3	78.6	76.6	75.4

* Preliminary data.

„...“ - Confidential data.

Table 4

**Industrial Production Indices
(Calendar adjusted, 2015 = 100)**

NACE.BG - 2008	2018	2019	2020						2021						
	VI	VI	VI	VII	VIII	IX	X	XI	XII	I	II	III	IV	V	VI*
B_TO_E36	112.2	108.3	100.0	103.5	96.7	103.3	108.8	108.4	104.3	99.6	100.2	112.1	105.5	102.4	109.6
B	111.5	91.3	106.1	97.6	105.7	107.8	107.1	94.1	109.9	84.6	105.5	112.1	101.9	105.7	113.6
B05	85.5	56.9	52.8	56.5	67.8	65.4	74.8	64.9	73.2	63.2	64.7	79.5	66.9	61.0	66.2
B06
B07	140.3	117.4	152.7	131.8	133.9	141.1	130.4	96.8	128.2	95.5	140.2	131.0	120.5	120.6	144.0
B08	114.7	100.0	111.8	107.3	117.8	117.3	120.3	146.2	146.6	100.0	108.6	143.2	143.8	152.6	152.3
B09
C	121.6	119.7	108.1	112.3	102.4	111.9	120.2	118.6	107.0	102.8	105.2	118.9	114.7	113.2	120.5
C10	106.4	109.2	113.9	108.0	100.0	110.7	116.9	112.7	108.0	100.1	97.2	112.1	110.9	112.9	112.6
C11	127.3	127.4	118.9	121.8	123.6	115.3	93.6	81.1	75.2	45.3	46.2	58.3	61.4	68.0	73.5
C12	79.4	41.3	37.9	39.7	32.7	32.6	36.4	39.3	40.7	17.7	22.5	36.2	44.8	46.6	60.2
C13	103.4	110.4	104.6	99.7	76.6	93.5	111.3	101.7	90.2	101.5	116.7	116.0	113.2	115.7	122.3
C14	98.4	88.3	75.0	86.0	69.3	70.4	72.6	68.2	63.4	76.1	72.9	71.4	65.5	62.3	73.5
C15	104.9	98.8	86.7	88.6	57.5	68.2	81.9	81.6	61.9	66.8	66.4	76.0	71.9	61.9	73.7
C16	84.8	76.9	74.8	76.4	72.2	78.0	81.0	85.2	74.5	69.0	71.5	87.7	83.8	91.5	86.5
C17	110.5	100.0	93.1	87.1	85.3	84.8	94.8	99.2	88.0	96.2	94.8	103.2	96.7	94.9	105.3
C18	106.9	123.4	94.9	100.3	95.8	100.5	112.8	115.9	104.4	98.2	103.8	118.8	113.3	109.9	123.1
C19
C20	122.6	119.6	119.9	117.9	112.8	109.4	116.3	114.8	109.9	105.1	112.4	128.4	101.5	113.8	123.9
C21	116.6	124.7	125.9	114.2	97.1	109.9	120.5	131.1	126.6	114.5	98.6	139.4	108.7	116.6	113.9
C22	141.2	142.9	130.3	149.6	135.0	150.3	163.2	151.1	131.3	138.7	149.1	157.7	150.5	148.9	159.9
C23	117.7	118.1	107.0	124.3	113.1	120.2	122.8	124.2	95.8	80.5	91.1	112.3	114.9	129.4	126.4
C24	112.7	89.8	117.6	114.3	110.7	111.1	107.7	117.6	114.2	115.2	108.8	123.5	123.4	106.8	103.2
C25	133.8	128.1	114.2	110.7	101.6	129.2	135.5	130.8	128.0	103.0	112.3	124.6	131.3	128.5	128.7
C26	151.8	167.9	147.8	150.4	129.2	143.1	182.2	200.1	178.5	190.1	178.6	211.4	196.4	204.7	214.9
C27	126.2	132.1	128.8	135.8	119.2	137.5	154.0	147.4	125.8	138.0	139.9	157.3	157.6	147.8	157.5
C28	125.5	129.3	90.7	99.2	86.7	107.9	111.9	111.7	104.7	100.1	102.6	117.8	114.4	108.1	128.1
C29	149.4	143.3	109.1	126.5	128.8	153.7	191.1	183.6	153.5	159.1	150.9	159.9	134.3	113.8	138.8
C30	143.3	142.4	168.1	153.8	163.9	159.6	197.8	213.1	132.0	185.9	208.0	253.3	253.7	186.8	282.8
C31	113.2	108.9	106.5	108.9	105.8	109.5	118.1	112.1	101.8	99.2	98.7	106.9	99.7	100.2	110.0
C32	160.2	174.4	93.9	105.6	106.7	121.2	121.4	116.4	86.3	87.8	104.4	112.2	134.5	110.2	140.6
C33	137.9	142.9	108.6	125.6	92.8	97.9	104.9	127.4	119.0	72.5	92.2	115.4	96.0	103.2	109.3
D	76.2	71.0	65.0	69.8	69.0	67.0	65.3	75.6	91.5	93.2	78.6	87.5	71.1	62.0	65.6
D35	76.2	71.0	65.0	69.8	69.0	67.0	65.3	75.6	91.5	93.2	78.6	87.5	71.1	62.0	65.6

* Preliminary data.

„..“ - Confidential data.