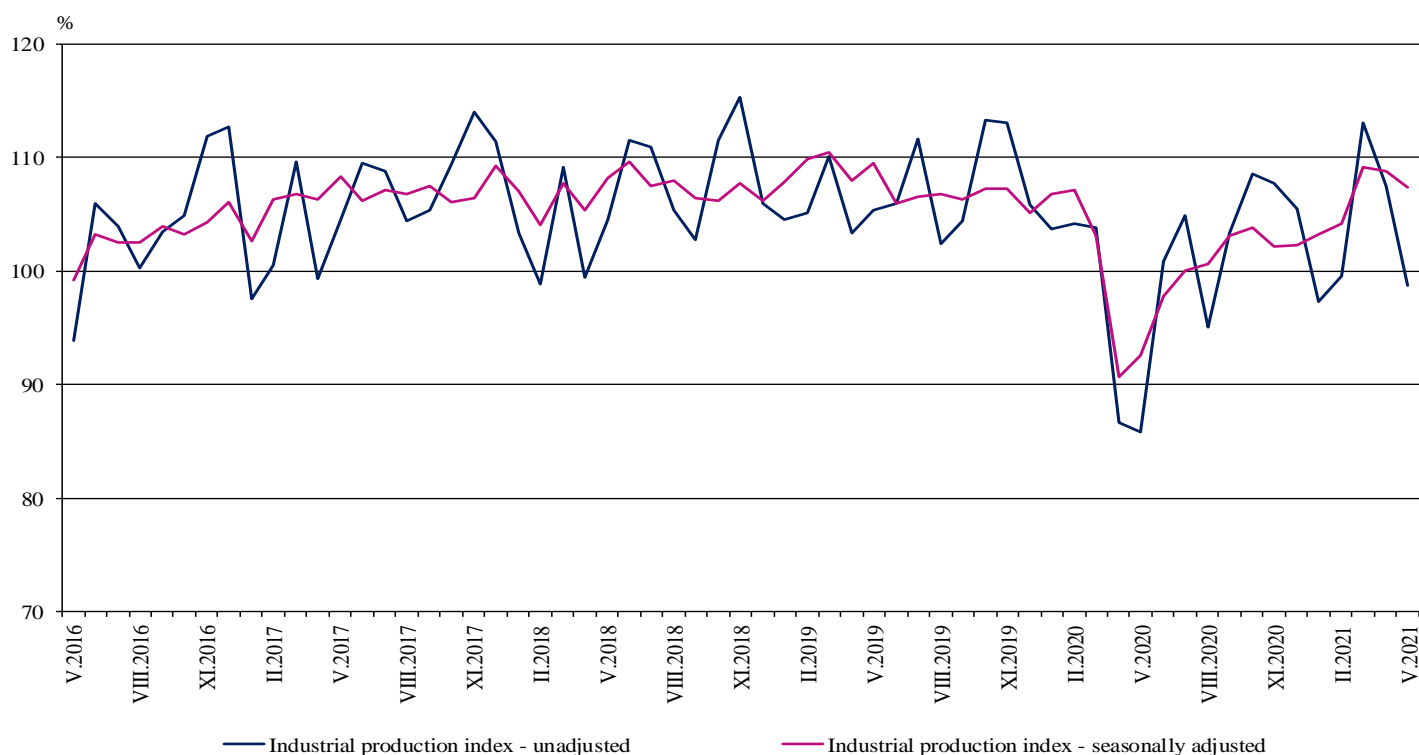


INDUSTRIAL PRODUCTION INDICES IN MAY 2021¹

According to the preliminary data in May 2021 the Industrial Production Index², seasonally adjusted³, decreased by 1.2 % compared to April 2021.

In May 2021 the working day adjusted⁴ Industrial Production Index rose by 16.5% in comparison with the same month of 2020.

Figure 1. Industrial Production Indices (2015 = 100)



¹ May 2021 data are preliminary. The final data on Industrial Production and Turnover Indices for April 2021 can be found on the NSI website: <http://www.nsi.bg/en>.

² Monthly Industrial Production and Industrial turnover indices measure changes in production and turnover values of industrial enterprises. This information can be used to assess the current economic development and for short-term forecasts. Indices do not measure the actual production level, it aims to measure the average change in value of production between two points of time. Indices are compiled on the base of information collected through representative sampling survey on industrial enterprises. The sample covers enterprises with annual turnover more than 97% of total turnover in industry.

Industrial production indices are calculated at constant base year that is to say they are weighted with the structure of the value added at factor costs in the base year.

³ Seasonal adjustment is a statistical method, which eliminates the seasonal component of time series.

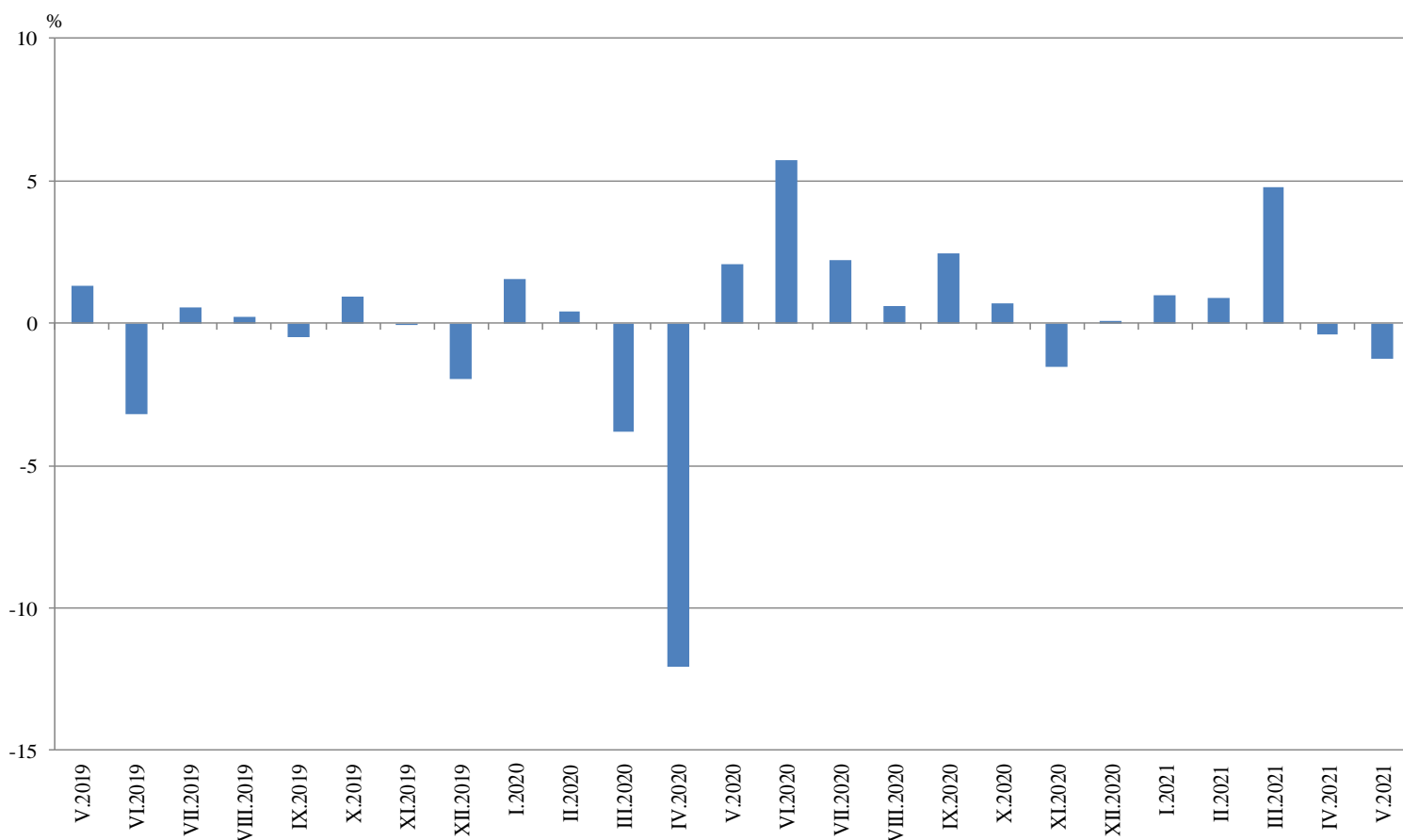
⁴ Working day adjustment is an adjustment for variations caused by calendar effects, different number of calendar and working days in the months, national holidays and outliers (for example the presence of more non-working days in May could contribute to the decline in the production in some activities).

Monthly changes

In May 2021 as compared to April 2021, the seasonally adjusted Industrial Production Index fell in the electricity, gas, steam and air conditioning supply by 2.7% and in manufacturing by 1.1%, while the production rose in the mining and quarrying industry by 3.3%.

The most significant decrease in the manufacturing was seen in other manufacturing by 25.8%, in the manufacture of other transport equipment by 18.2%, in the manufacture of motor vehicles, trailers and semi-trailers by 14.5% and in the manufacture of leather and related products by 12.7%. Major increase was reported in the manufacture of chemicals and chemical products by 11.3%, in the manufacture of other non-metallic mineral products - by 7.7%, in the manufacture of wood and of products of wood and cork, except furniture; manufacture of articles of straw and plaiting materials by 6.8% and in the manufacture of tobacco products by 6.6%.

**Figure 2. Changes of Industrial Production Indices compared to the previous month
(Seasonally adjusted)**

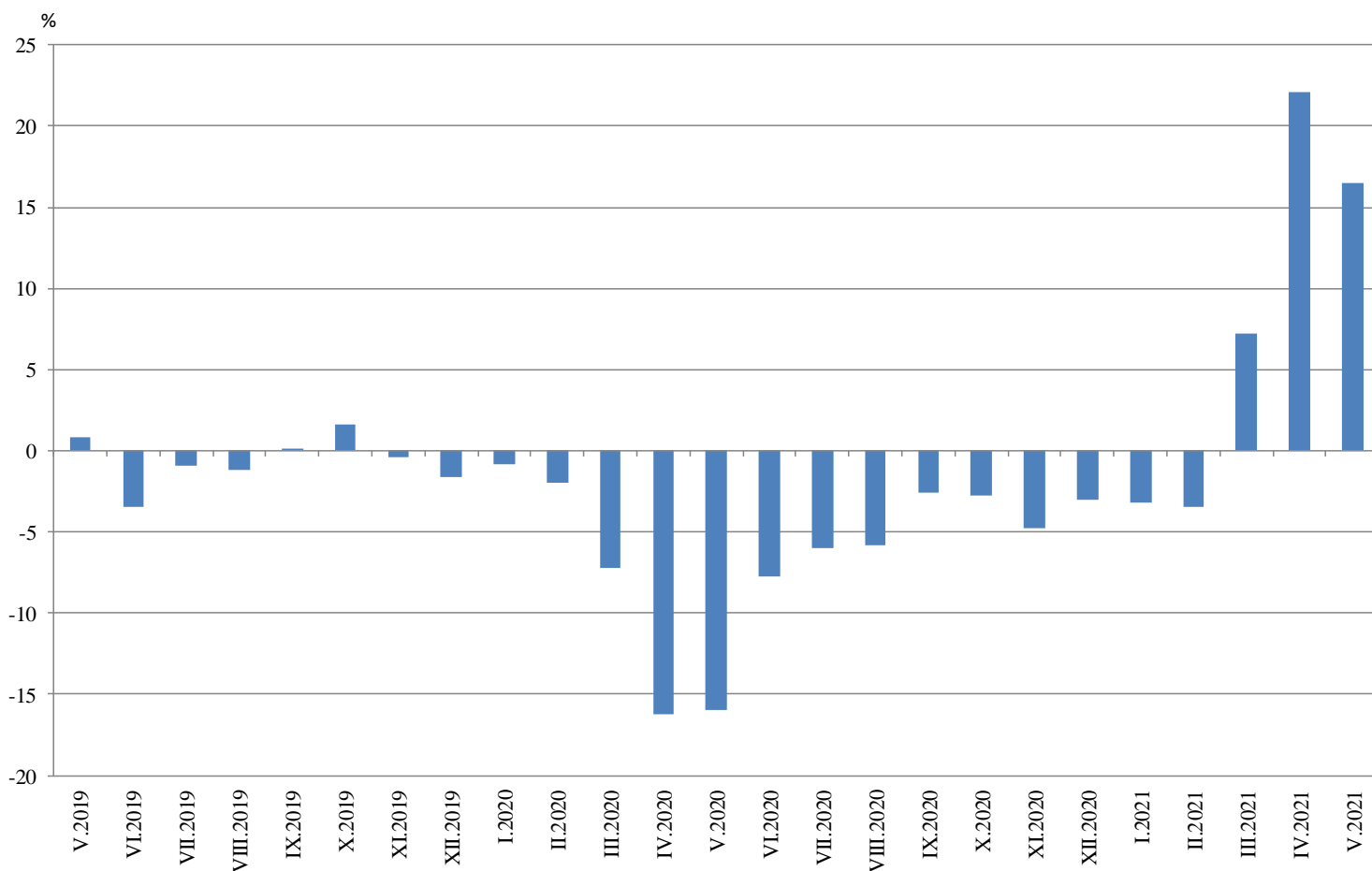


Annual changes

On annual basis in May 2021 Industrial Production Index calculated from working day adjusted data rose in the manufacturing by 18.7%, in the mining and quarrying industry by 14.0%, and in the electricity, gas, steam and air conditioning supply by 9.0%.

In the manufacturing more considerable increase compared to the same month of the previous year was registered in the manufacture of motor vehicles, trailers and semi-trailers by 93.6%, in the manufacture of computer, electronic and optical products by 48.6%, in the manufacture of wood and of products of wood and cork, except furniture; manufacture of articles of straw and plaiting materials by 47.7% and in the manufacture of machinery and equipment n.e.c. by 43.1%. Major decrease was seen in the manufacture of beverages by 29.6%, in the manufacture of wearing apparel by 18.1%, and in the manufacture of leather and related products by 8.3%.

Figure 3. Changes of Industrial Production Indices compared to the same month of the previous year (Working day adjusted)



Annex

Table 1

Changes of Industrial Production Indices compared to the previous month¹

(Per cent)

Economic activities	NACE.BG - 2008	2020	2021				
		XII	I	II	III	IV	V*
Industry	B_TO_E36	0.1	1.0	0.9	4.8	-0.4	-1.2
Mining and quarrying	B	14.0	-13.0	27.2	4.8	-5.9	3.3
Mining of coal and lignite	B05	7.2	-11.4	27.1	38.7	-2.7	-7.3
Extraction of crude petroleum and natural gas	B06
Mining of metal ores	B07	32.4	-25.4	52.2	-9.3	-8.7	0.1
Other mining and quarrying	B08	11.6	1.0	-3.5	4.6	0.9	1.2
Mining support service activities	B09
Manufacturing	C	-0.2	2.1	-0.6	4.5	-1.0	-1.1
Manufacture of food products	C10	-1.9	8.9	-2.3	1.9	4.0	-1.4
Manufacture of beverages	C11	-10.0	-6.5	-9.3	-1.9	1.4	-3.1
Manufacture of tobacco products	C12	9.6	-21.9	14.8	7.9	5.6	6.6
Manufacture of textiles	C13	5.6	8.0	2.6	-6.8	4.6	-5.4
Manufacture of wearing apparel	C14	-1.2	7.4	0.6	2.2	-3.4	-3.1
Manufacture of leather and related products	C15	-2.7	-3.3	1.1	8.0	3.0	-12.7
Manufacture of wood and of products of wood and cork, except furniture; manufacture of articles of straw and plaiting materials	C16	-0.2	5.9	-2.3	9.7	-4.7	6.8
Manufacture of paper and paper products	C17	-5.0	4.1	-0.1	2.9	-1.4	-2.4
Printing and reproduction of recorded media	C18	-1.3	8.4	2.7	6.2	-2.5	-3.9
Manufacture of coke and refined petroleum products	C19
Manufacture of chemicals and chemical products	C20	-0.5	0.5	5.0	-1.1	-14.1	11.3
Manufacture of basic pharmaceutical products and pharmaceutical preparations	C21	2.7	-4.1	-6.0	11.8	-10.8	6.1
Manufacture of rubber and plastic products	C22	4.7	3.0	1.5	-2.3	3.7	-1.6
Manufacture of other non-metallic mineral products	C23	-6.0	5.0	-0.3	1.9	-2.9	7.7
Manufacture of basic metals	C24	3.7	-0.5	-0.7	2.4	1.9	-1.5
Manufacture of fabricated metal products, except machinery and equipment	C25	-1.2	15.8	-9.9	0.7	10.3	-0.1
Manufacture of computer, electronic and optical products	C26	-9.5	19.1	-5.7	7.3	0.6	4.9
Manufacture of electrical equipment	C27	5.8	2.6	-2.4	6.4	7.0	-2.3
Manufacture of machinery and equipment n.e.c.	C28	5.2	-0.3	-1.6	5.4	-2.1	0.5
Manufacture of motor vehicles, trailers and semi-trailers	C29	8.7	-10.5	-4.8	-1.0	-12.6	-14.5
Manufacture of other transport equipment	C30	-17.6	15.9	3.0	12.9	4.4	-18.2
Manufacture of furniture	C31	-0.3	9.6	-5.0	-2.4	-1.4	-0.9
Other manufacturing	C32	-9.9	2.0	16.6	-3.0	23.6	-25.8
Repair and installation of machinery and equipment	C33	-18.8	10.6	6.9	6.9	-6.1	4.7
Electricity, gas, steam and air conditioning supply	D	1.2	0.9	-1.8	6.6	1.7	-2.7
Electricity, gas, steam and air conditioning Supply	D35	1.2	0.9	-1.8	6.6	1.7	-2.7

¹ Seasonally adjusted.

* Preliminary data.

„..“ - Confidential data.

Table 2
Changes of Industrial Production Indices compared to the same month of the previous year¹
(Per cent)

Economic activities	NACE.BG - 2008	2020	2021				
		XII	I	II	III	IV	V*
Industry	B_TO_E36	-3.0	-3.2	-3.4	7.2	22.1	16.5
Mining and quarrying	B	-5.7	-17.5	0.3	4.9	4.6	14.0
Mining of coal and lignite	B05	-21.9	-22.4	-26.1	7.9	3.8	35.1
Extraction of crude petroleum and natural gas	B06
Mining of metal ores	B07	-10.7	-25.0	9.0	-5.7	-8.9	-11.0
Other mining and quarrying	B08	49.9	14.3	35.2	41.9	64.1	69.0
Mining support service activities	B09
Manufacturing	C	-2.5	-2.3	-4.4	9.3	26.2	18.7
Manufacture of food products	C10	-5.8	-2.8	-1.3	-1.5	17.2	11.3
Manufacture of beverages	C11	-21.0	-41.0	-42.9	-34.7	-20.1	-29.6
Manufacture of tobacco products	C12	-5.2	-27.9	-6.8	-2.1	2.0	29.0
Manufacture of textiles	C13	6.0	3.7	14.2	17.3	36.9	7.8
Manufacture of wearing apparel	C14	-16.8	-7.9	-8.5	7.7	5.8	-18.1
Manufacture of leather and related products	C15	-21.6	-27.5	-24.4	12.3	20.5	-8.3
Manufacture of wood and of products of wood and cork, except furniture; manufacture of articles of straw and plaiting materials	C16	-6.1	-1.4	1.3	25.8	46.6	47.7
Manufacture of paper and paper products	C17	-4.3	2.8	-1.0	1.8	7.7	6.4
Printing and reproduction of recorded media	C18	-4.9	-0.7	-1.5	18.4	42.6	23.9
Manufacture of coke and refined petroleum products	C19
Manufacture of chemicals and chemical products	C20	-5.4	-7.3	-3.8	-3.7	-9.8	1.6
Manufacture of basic pharmaceutical products and pharmaceutical preparations	C21	15.4	3.3	-0.7	2.1	-16.7	-2.6
Manufacture of rubber and plastic products	C22	9.1	14.3	14.3	12.4	30.0	24.9
Manufacture of other non-metallic mineral products	C23	-13.2	-9.9	-7.4	7.6	33.5	36.0
Manufacture of basic metals	C24	14.3	-1.7	-2.9	8.0	20.5	-0.3
Manufacture of fabricated metal products, except machinery and equipment	C25	16.0	8.9	-8.9	3.9	32.8	26.7
Manufacture of computer, electronic and optical products	C26	-5.6	33.0	17.2	47.8	43.0	48.6
Manufacture of electrical equipment	C27	18.2	18.1	7.2	24.2	45.7	42.5
Manufacture of machinery and equipment n.e.c.	C28	2.5	-6.4	-6.4	11.1	41.1	43.1
Manufacture of motor vehicles, trailers and semi-trailers	C29	36.2	0.8	-2.3	23.4	259.8	93.6
Manufacture of other transport equipment	C30	-13.9	3.7	1.5	30.8	39.2	12.7
Manufacture of furniture	C31	2.6	8.1	2.6	31.7	54.4	22.3
Other manufacturing	C32	-47.2	-45.3	-43.1	38.0	88.1	24.5
Repair and installation of machinery and equipment	C33	-18.5	-28.5	-15.8	-16.8	-1.7	23.1
Electricity, gas, steam and air conditioning supply	D	-3.7	-1.7	-5.6	-1.7	9.6	9.0
Electricity, gas, steam and air conditioning supply	D35	-3.7	-1.7	-5.6	-1.7	9.6	9.0

¹ Working day adjusted.

* Preliminary data.

„..“ - Confidential data.

Table 3

Industrial Production Indices
(Seasonally adjusted, 2015 = 100)

NACE.BG - 2008	2020								2021				
	V	VI	VII	VIII	IX	X	XI	XII	I	II	III	IV	V*
B_TO_E36	92.5	97.8	100.0	100.6	103.1	103.8	102.2	102.3	103.3	104.2	109.2	108.8	107.4
B	99.2	109.9	99.2	107.8	103.4	94.9	87.8	100.1	87.1	110.7	116.1	109.2	112.8
B05	62.1	71.2	63.5	71.2	60.1	53.8	51.9	55.6	49.3	62.7	87.0	84.6	78.5
B06
B07	135.5	152.7	131.8	133.9	141.1	130.4	96.8	128.2	95.5	145.5	132.0	120.5	120.7
B08	88.6	103.5	100.5	109.6	107.7	106.4	128.5	143.4	144.8	139.8	146.3	147.5	149.3
B09
C	96.8	102.6	106.2	106.8	110.4	112.3	111.1	110.8	113.2	112.5	117.6	116.4	115.1
C10	104.2	110.3	106.8	98.9	104.6	106.2	105.9	103.9	113.2	110.5	112.6	117.1	115.5
C11	93.4	96.8	97.4	96.1	99.9	98.0	90.2	81.2	75.9	68.8	67.5	68.5	66.4
C12	31.4	35.6	34.7	35.8	32.7	32.0	34.1	37.3	29.2	33.5	36.1	38.1	40.7
C13	96.7	94.7	96.2	97.2	97.1	105.6	97.3	102.8	110.9	113.9	106.1	111.0	105.0
C14	80.5	70.9	73.3	71.6	71.2	71.7	67.7	66.8	71.8	72.2	73.8	71.3	69.1
C15	71.4	74.3	73.0	68.8	69.1	73.1	72.2	70.2	67.9	68.6	74.1	76.3	66.7
C16	61.8	69.8	71.1	73.2	74.5	74.1	78.6	78.4	83.0	81.1	89.0	84.9	90.6
C17	88.4	91.3	87.4	88.6	87.7	91.6	96.9	92.1	95.9	95.7	98.5	97.2	94.9
C18	91.2	93.9	100.3	101.8	102.2	104.2	100.9	99.6	108.0	110.9	117.7	114.7	110.2
C19
C20	110.7	115.8	115.1	116.7	110.0	114.5	113.3	112.7	113.3	119.0	117.7	101.2	112.6
C21	121.0	119.6	114.1	111.8	113.6	121.7	119.6	122.9	117.9	110.8	123.9	110.5	117.3
C22	123.3	126.8	139.7	141.2	144.9	145.2	141.8	148.5	152.9	155.1	151.6	157.1	154.7
C23	88.7	98.9	114.0	107.4	112.0	109.7	114.7	107.8	113.2	112.8	115.0	111.6	120.2
C24	111.2	116.0	113.9	115.3	112.4	110.0	111.0	115.1	114.6	113.7	116.5	118.7	116.9
C25	107.8	107.5	104.1	103.1	125.7	129.6	118.5	117.1	135.6	122.1	123.0	135.7	135.5
C26	144.5	142.3	148.7	146.5	149.3	170.5	183.7	166.3	198.0	186.6	200.2	201.5	211.3
C27	111.2	123.5	131.4	131.2	133.7	138.6	133.5	141.2	144.8	141.4	150.5	161.0	157.3
C28	77.3	86.2	95.1	99.8	107.1	105.4	103.6	108.9	108.6	106.8	112.6	110.3	110.8
C29	58.1	101.3	124.1	148.8	149.3	171.3	167.6	182.1	162.9	155.2	153.7	134.4	114.9
C30	156.8	170.0	171.0	198.5	187.8	196.7	195.5	161.0	186.7	192.2	216.9	226.5	185.2
C31	81.3	100.0	102.8	106.6	106.9	109.7	104.7	104.4	114.5	108.7	106.1	104.6	103.7
C32	81.0	83.5	104.5	107.1	115.4	108.7	107.5	96.8	98.8	115.1	111.6	138.0	102.4
C33	91.7	105.4	121.1	95.6	94.3	100.9	111.1	90.3	99.8	106.6	114.0	107.1	112.1
D	71.0	74.5	74.6	74.1	75.4	73.1	72.3	73.1	73.8	72.5	77.3	78.6	76.4
35	71.0	74.5	74.6	74.1	75.4	73.1	72.3	73.1	73.8	72.5	77.3	78.6	76.4

* Preliminary data.

...“ - Confidential data.

Table 4

Industrial Production Indices
(Working day adjusted, 2015 = 100)

NACE.BG - 2008	2018	2019	2020								2021				
	V	V	V	VI	VII	VIII	IX	X	XI	XII	I	II	III	IV	V*
B_TO_E36	103.9	104.7	88.0	100.0	103.5	96.7	103.3	108.8	108.4	104.3	99.6	100.2	112.1	105.5	102.5
B	90.6	101.3	92.8	106.1	97.6	105.7	107.8	107.1	94.1	109.9	84.6	105.5	112.1	101.9	105.8
B05	72.0	78.5	45.2	52.8	56.5	67.8	65.4	74.8	64.9	73.2	63.2	64.7	79.5	66.9	61.0
B06
B07	104.9	121.5	135.5	152.7	131.8	133.9	141.1	130.4	96.8	128.2	95.5	140.2	131.0	120.5	120.7
B08	107.8	109.0	90.3	111.8	107.3	117.8	117.3	120.3	146.2	146.6	100.0	108.6	143.2	143.8	152.6
B09
C	113.2	114.5	95.3	108.1	112.3	102.4	111.9	120.2	118.6	107.0	102.8	105.2	118.9	114.7	113.2
C10	104.7	108.3	102.0	113.9	108.0	100.0	110.7	116.9	112.7	108.0	100.1	97.2	112.1	110.9	113.5
C11	114.3	110.5	98.2	118.9	121.8	123.6	115.3	93.6	81.1	75.2	45.3	46.2	58.3	61.4	69.1
C12	67.7	67.6	36.1	37.9	39.7	32.7	32.6	36.4	39.3	40.7	17.7	22.5	36.2	44.8	46.6
C13	106.6	99.1	107.2	104.6	99.7	76.6	93.5	111.3	101.7	90.2	101.5	116.7	116.0	113.2	115.6
C14	82.8	76.5	76.1	75.0	86.0	69.3	70.4	72.6	68.2	63.4	76.1	72.9	71.4	65.5	62.3
C15	88.1	97.3	67.7	86.7	88.6	57.5	68.2	81.9	81.6	61.9	66.8	66.4	76.0	71.9	62.1
C16	83.1	80.3	62.0	74.8	76.4	72.2	78.0	81.0	85.2	74.5	69.0	71.5	87.7	83.8	91.6
C17	105.2	106.3	89.6	93.1	87.1	85.3	84.8	94.8	99.2	88.0	96.2	94.8	103.2	96.7	95.3
C18	105.9	129.4	89.5	94.9	100.3	95.8	100.5	112.8	115.9	104.4	98.2	103.8	118.8	113.3	110.8
C19
C20	113.9	122.2	110.4	119.9	117.9	112.8	109.4	116.3	114.8	109.9	105.1	112.4	128.4	101.5	112.2
C21	107.6	113.9	119.8	125.9	114.2	97.1	109.9	120.5	131.1	126.6	114.5	98.6	139.4	108.7	116.7
C22	135.6	136.9	119.4	130.3	149.6	135.0	150.3	163.2	151.1	131.3	138.7	149.1	157.7	150.5	149.2
C23	116.5	118.0	95.1	107.0	124.3	113.1	120.2	122.8	124.2	95.8	80.5	91.1	112.3	114.9	129.3
C24	110.8	92.5	107.3	117.6	114.3	110.7	111.1	107.7	117.6	114.2	115.2	108.8	123.5	123.4	107.0
C25	129.7	112.5	102.7	114.2	110.7	101.6	129.2	135.5	130.8	128.0	103.0	112.3	124.6	131.3	130.1
C26	132.6	139.9	137.3	147.8	150.4	129.2	143.1	182.2	200.1	178.5	190.1	178.6	211.4	196.4	204.1
C27	117.8	127.0	104.2	128.8	135.8	119.2	137.5	154.0	147.4	125.8	138.0	139.9	157.3	157.6	148.5
C28	114.9	124.3	75.4	90.7	99.2	86.7	107.9	111.9	111.7	104.7	100.1	102.6	117.8	114.4	107.9
C29	141.9	156.2	58.1	109.1	126.5	128.8	153.7	191.1	183.6	153.5	159.1	150.9	159.9	134.3	112.4
C30	140.1	168.6	165.6	168.1	153.8	163.9	159.6	197.8	213.1	132.0	185.9	208.0	253.3	253.7	186.7
C31	116.0	105.0	82.0	106.5	108.9	105.8	109.5	118.1	112.1	101.8	99.2	98.7	106.9	99.7	100.3
C32	136.0	146.8	79.4	93.9	105.6	106.7	121.2	121.4	116.4	86.3	87.8	104.4	112.2	134.5	98.8
C33	113.0	119.4	83.9	108.6	125.6	92.8	97.9	104.9	127.4	119.0	72.5	92.2	115.4	96.0	103.3
D	72.3	67.9	57.2	65.0	69.8	69.0	67.0	65.3	75.6	91.5	93.2	78.6	87.5	71.1	62.3
D35	72.3	67.9	57.2	65.0	69.8	69.0	67.0	65.3	75.6	91.5	93.2	78.6	87.5	71.1	62.3

* Preliminary data.

„..“ - Confidential data.