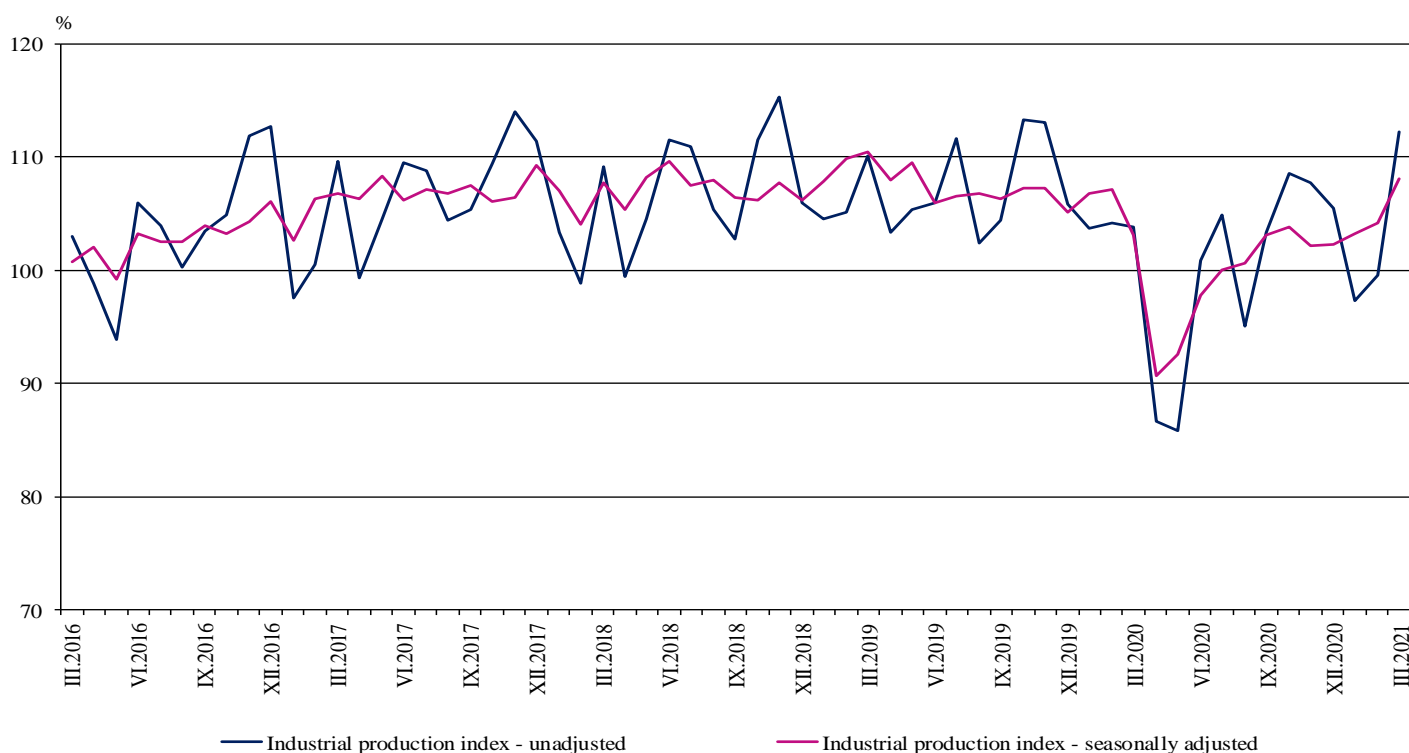


## INDUSTRIAL PRODUCTION INDICES IN MARCH 2021<sup>1</sup>

According to the preliminary data in March 2021 the Industrial Production Index<sup>2</sup>, seasonally adjusted<sup>3</sup>, increased by 3.8% compared to February 2021.

In March 2021 the working day adjusted<sup>4</sup> Industrial Production Index rose by 6.4% in comparison with the same month of 2020.

**Figure 1. Industrial Production Indices (2015 = 100)**



<sup>1</sup> March 2021 data are preliminary. The final data on Industrial Production and Turnover Indices for February 2021 can be found on the NSI website: <http://www.nsi.bg/en>.

<sup>2</sup> Monthly Industrial Production and Industrial turnover indices measure changes in production and turnover values of industrial enterprises. This information can be used to assess the current economic development and for short-term forecasts. Indices do not measure the actual production level, it aims to measure the average change in value of production between two points of time. Indices are compiled on the base of information collected through representative sampling survey on industrial enterprises. The sample covers enterprises with annual turnover more than 97% of total turnover in industry.

Industrial production indices are calculated at constant base year that is to say they are weighted with the structure of the value added at factor costs in the base year.

<sup>3</sup> Seasonal adjustment is a statistical method, which eliminates the seasonal component of time series.

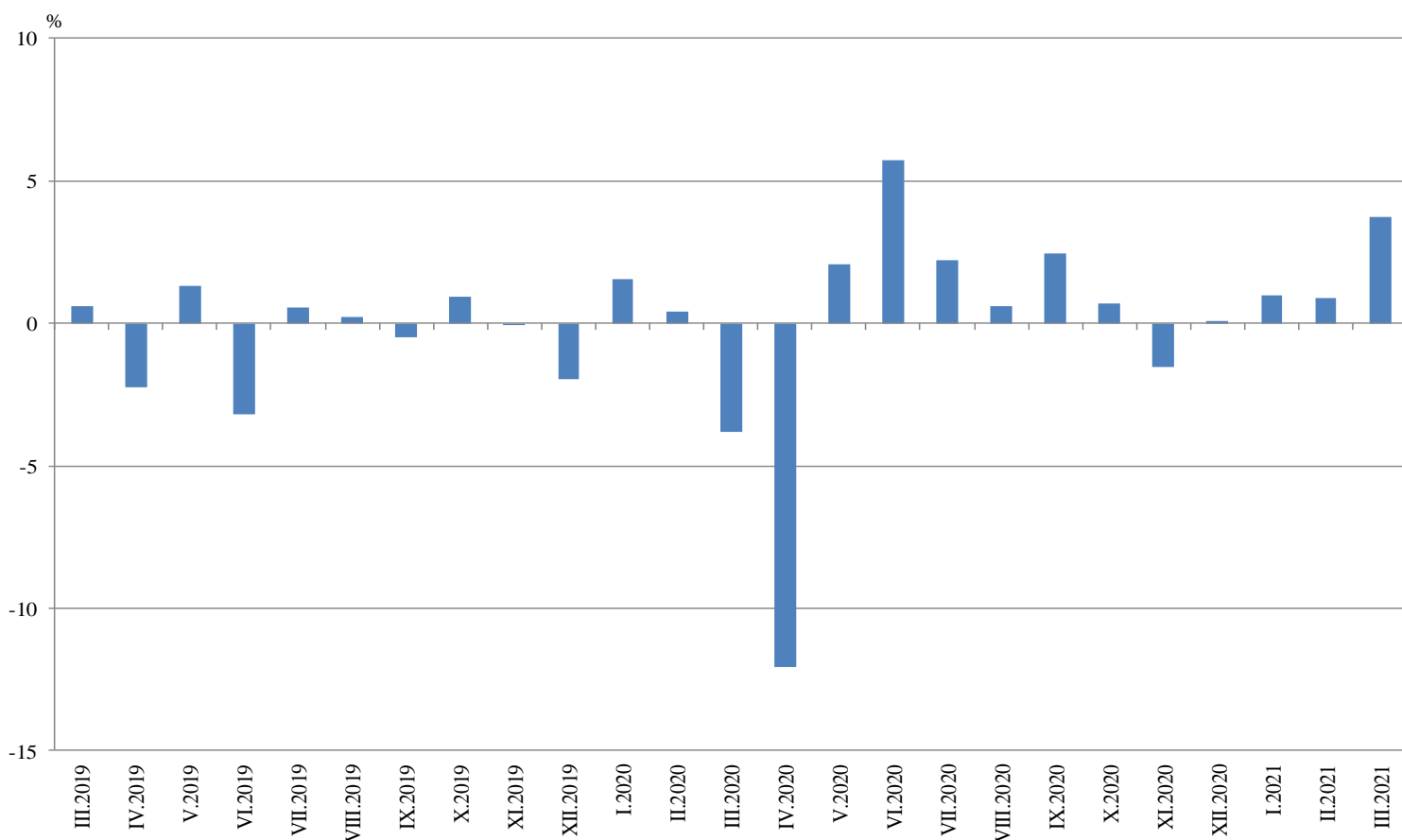
<sup>4</sup> Working day adjustment is an adjustment for variations caused by calendar effects, different number of calendar and working days in the months, national holidays and outliers (for example the presence of more non-working days in May could contribute to the decline in the production in some activities).

## Monthly changes

In March 2021 as compared to February 2021, the seasonally adjusted Industrial Production Index rose in the electricity, gas, steam and air conditioning supply by 6.0%, in the mining and quarrying industry by 5.3% and in manufacturing by 3.6%.

The most significant increase in the manufacturing was seen in the manufacture of basic pharmaceutical products and pharmaceutical preparations by 12.6%, in the manufacture of other transport equipment by 11.2%, in the manufacture of wood and of products of wood and cork, except furniture; manufacture of articles of straw and plaiting materials by 9.2%, in the manufacture of computer, electronic and optical products by 6.5% and in the repair and installation of machinery and equipment by 6.3%. Major decrease was seen in the manufacture of textiles by 7.3%, in the manufacture of chemicals and chemical products - by 5.8%, in other manufacturing by 4.1% and in the manufacture of beverages by 3.7%.

**Figure 2. Changes of Industrial Production Indices compared to the previous month  
(Seasonally adjusted)**

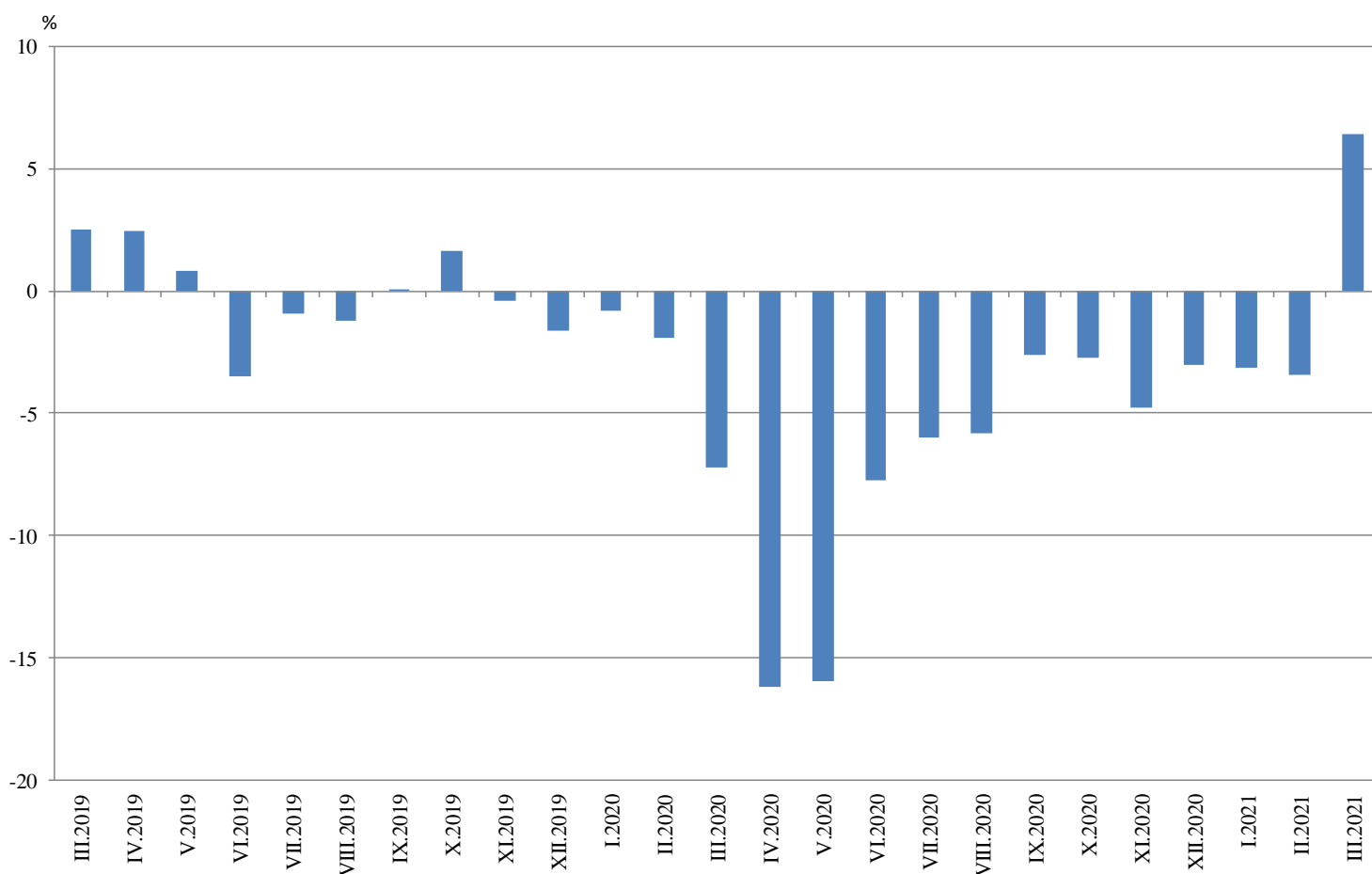


### Annual changes

On annual basis in March 2021 Industrial Production Index calculated from working day adjusted data rose in the manufacturing by 8.2%, in the mining and quarrying industry by 5.5%, while in the electricity, gas, steam and air conditioning supply the index fell by 1.5%.

In the manufacturing, more considerable increase compared to the same month of the previous year was registered in the manufacture of computer, electronic and optical products by 47.0%, in the other manufacturing by 37.3%, in the manufacture of furniture by 32.0%, in the manufacture of other transport equipment by 30.4% and in the manufacture of motor vehicles, trailers and semi-trailers by 24.2%. Major decrease was seen in the manufacture of beverages by 36.3%, in the repair and installation of machinery and equipment by 17.3%, in the manufacture of chemicals and chemical products by 8.9%, and in the manufacture of tobacco products by 6.5%.

**Figure 3. Changes of Industrial Production Indices compared to the same month of the previous year (Working day adjusted)**



Annex

Table 1

Changes of Industrial Production Indices compared to the previous month<sup>1</sup>

(Per cent)

Economic activities	NACE.BG - 2008	2020			2021		
		X	XI	XII	I	II	III*
<b>Industry</b>	<b>B_TO_E36</b>	<b>0.7</b>	<b>-1.5</b>	<b>0.1</b>	<b>1.0</b>	<b>0.9</b>	<b>3.8</b>
<b>Mining and quarrying</b>	<b>B</b>	<b>-8.3</b>	<b>-7.5</b>	<b>14.0</b>	<b>-13.0</b>	<b>27.2</b>	<b>5.3</b>
Mining of coal and lignite	B05	-10.4	-3.5	7.2	-11.4	27.1	38.7
Extraction of crude petroleum and natural gas	B06	..	..	..	..	..	..
Mining of metal ores	B07	-7.6	-25.7	32.4	-25.4	52.2	-9.1
Other mining and quarrying	B08	-1.3	20.8	11.6	1.0	-3.5	11.8
Mining support service activities	B09	..	..	..	..	..	..
<b>Manufacturing</b>	<b>C</b>	<b>1.7</b>	<b>-1.1</b>	<b>-0.2</b>	<b>2.1</b>	<b>-0.6</b>	<b>3.6</b>
Manufacture of food products	C10	1.5	-0.3	-1.9	8.9	-2.3	-0.5
Manufacture of beverages	C11	-1.9	-7.9	-10.0	-6.5	-9.3	-3.7
Manufacture of tobacco products	C12	-2.1	6.4	9.6	-21.9	14.8	2.3
Manufacture of textiles	C13	8.8	-7.9	5.6	8.0	2.6	-7.3
Manufacture of wearing apparel	C14	0.8	-5.6	-1.2	7.4	0.6	1.7
Manufacture of leather and related products	C15	5.8	-1.2	-2.7	-3.3	1.1	5.7
Manufacture of wood and of products of wood and cork, except furniture; manufacture of articles of straw and plaiting materials	C16	-0.5	6.0	-0.2	5.9	-2.3	9.2
Manufacture of paper and paper products	C17	4.4	5.8	-5.0	4.1	-0.1	2.5
Printing and reproduction of recorded media	C18	2.0	-3.2	-1.3	8.4	2.7	5.7
Manufacture of coke and refined petroleum products	C19	..	..	..	..	..	..
Manufacture of chemicals and chemical products	C20	4.1	-1.0	-0.5	0.5	5.0	-5.8
Manufacture of basic pharmaceutical products and pharmaceutical preparations	C21	7.1	-1.7	2.7	-4.1	-6.0	12.6
Manufacture of rubber and plastic products	C22	0.3	-2.4	4.7	3.0	1.5	-2.9
Manufacture of other non-metallic mineral products	C23	-2.0	4.5	-6.0	5.0	-0.3	2.6
Manufacture of basic metals	C24	-2.1	0.9	3.7	-0.5	-0.7	-0.1
Manufacture of fabricated metal products, except machinery and equipment	C25	3.1	-8.5	-1.2	15.8	-9.9	-1.8
Manufacture of computer, electronic and optical products	C26	14.2	7.8	-9.5	19.1	-5.7	6.5
Manufacture of electrical equipment	C27	3.7	-3.7	5.8	2.6	-2.4	4.3
Manufacture of machinery and equipment n.e.c.	C28	-1.6	-1.7	5.2	-0.3	-1.6	5.8
Manufacture of motor vehicles, trailers and semi-trailers	C29	14.7	-2.2	8.7	-10.5	-4.8	3.9
Manufacture of other transport equipment	C30	4.8	-0.6	-17.6	15.9	3.0	11.2
Manufacture of furniture	C31	2.6	-4.5	-0.3	9.6	-5.0	-2.0
Other manufacturing	C32	-5.8	-1.1	-9.9	2.0	16.6	-4.1
Repair and installation of machinery and equipment	C33	7.0	10.2	-18.8	10.6	6.9	6.3
<b>Electricity, gas, steam and air conditioning supply</b>	<b>D</b>	<b>-2.9</b>	<b>-1.2</b>	<b>1.2</b>	<b>0.9</b>	<b>-1.8</b>	<b>6.0</b>
Electricity, gas, steam and air conditioning supply	D35	-2.9	-1.2	1.2	0.9	-1.8	6.0

<sup>1</sup> Seasonally adjusted.

\* Preliminary data.

„..“ - Confidential data.

**Table 2**  
**Changes of Industrial Production Indices compared to the same month of the previous year<sup>1</sup>**  
(Per cent)

Economic activities	NACE.BG - 2008	2020			2021		
		X	XI	XII	I	II	III*
<b>Industry</b>	<b>B_TO_E36</b>	<b>-2.7</b>	<b>-4.8</b>	<b>-3.0</b>	<b>-3.2</b>	<b>-3.4</b>	<b>6.4</b>
<b>Mining and quarrying</b>	<b>B</b>	<b>-11.7</b>	<b>-15.6</b>	<b>-5.7</b>	<b>-17.5</b>	<b>0.3</b>	<b>5.5</b>
Mining of coal and lignite	B05	-25.7	-23.6	-21.9	-22.4	-26.1	7.9
Extraction of crude petroleum and natural gas	B06	..	..	..	..	..	..
Mining of metal ores	B07	-9.5	-28.0	-10.7	-25.0	9.0	-5.6
Other mining and quarrying	B08	-1.0	22.2	49.9	14.3	35.2	45.2
Mining support service activities	B09	..	..	..	..	..	..
<b>Manufacturing</b>	<b>C</b>	<b>-1.6</b>	<b>-3.7</b>	<b>-2.5</b>	<b>-2.3</b>	<b>-4.4</b>	<b>8.2</b>
Manufacture of food products	C10	-6.6	-3.5	-5.8	-2.8	-1.3	-3.6
Manufacture of beverages	C11	-5.0	-11.9	-21.0	-41.0	-42.9	-36.3
Manufacture of tobacco products	C12	-36.1	-29.8	-5.2	-27.9	-6.8	-6.5
Manufacture of textiles	C13	9.8	-2.3	6.0	3.7	14.2	16.5
Manufacture of wearing apparel	C14	-12.4	-18.2	-16.8	-7.9	-8.5	7.5
Manufacture of leather and related products	C15	-18.1	-26.6	-21.6	-27.5	-24.4	9.8
Manufacture of wood and of products of wood and cork, except furniture; manufacture of articles of straw and plaiting materials	C16	-5.9	0.2	-6.1	-1.4	1.3	25.2
Manufacture of paper and paper products	C17	-7.8	3.1	-4.3	2.8	-1.0	1.2
Printing and reproduction of recorded media	C18	-6.9	-17.6	-4.9	-0.7	-1.5	18.1
Manufacture of coke and refined petroleum products	C19	..	..	..	..	..	..
Manufacture of chemicals and chemical products	C20	-2.9	0.8	-5.4	-7.3	-3.8	-8.9
Manufacture of basic pharmaceutical products and pharmaceutical preparations	C21	11.6	-2.5	15.4	3.3	-0.7	2.1
Manufacture of rubber and plastic products	C22	8.1	1.0	9.1	14.3	14.3	12.0
Manufacture of other non-metallic mineral products	C23	-2.3	1.1	-13.2	-9.9	-7.4	8.1
Manufacture of basic metals	C24	-12.7	-2.8	14.3	-1.7	-2.9	6.6
Manufacture of fabricated metal products, except machinery and equipment	C25	10.1	2.7	16.0	8.9	-8.9	1.3
Manufacture of computer, electronic and optical products	C26	9.8	18.7	-5.6	33.0	17.2	47.0
Manufacture of electrical equipment	C27	16.3	4.1	18.2	18.1	7.2	22.8
Manufacture of machinery and equipment n.e.c.	C28	-12.0	-10.2	2.5	-6.4	-6.4	11.5
Manufacture of motor vehicles, trailers and semi-trailers	C29	19.7	17.6	36.2	0.8	-2.3	24.2
Manufacture of other transport equipment	C30	21.3	11.7	-13.9	3.7	1.5	30.4
Manufacture of furniture	C31	8.5	-0.2	2.6	8.1	2.6	32.0
Other manufacturing	C32	-30.1	-41.7	-47.2	-45.3	-43.1	37.3
Repair and installation of machinery and equipment	C33	-21.4	-0.6	-18.5	-28.5	-15.8	-17.3
<b>Electricity, gas, steam and air conditioning supply</b>	<b>D</b>	<b>-4.5</b>	<b>-5.6</b>	<b>-3.7</b>	<b>-1.7</b>	<b>-5.6</b>	<b>-1.5</b>
Electricity, gas, steam and air conditioning supply	D35	-4.5	-5.6	-3.7	-1.7	-5.6	-1.5

<sup>1</sup> Working day adjusted.

\* Preliminary data.

„..“ - Confidential data.

Table 3

**Industrial Production Indices**  
**(Seasonally adjusted, 2015 = 100)**

NACE.BG - 2008	2020										2021		
	III	IV	V	VI	VII	VIII	IX	X	XI	XII	I	II	III*
<b>B_TO_E36</b>	<b>103.1</b>	<b>90.7</b>	<b>92.5</b>	<b>97.8</b>	<b>100.0</b>	<b>100.6</b>	<b>103.1</b>	<b>103.8</b>	<b>102.2</b>	<b>102.3</b>	<b>103.3</b>	<b>104.2</b>	<b>108.1</b>
<b>B</b>	<b>112.0</b>	<b>105.2</b>	<b>99.2</b>	<b>109.9</b>	<b>99.2</b>	<b>107.8</b>	<b>103.4</b>	<b>94.9</b>	<b>87.8</b>	<b>100.1</b>	<b>87.1</b>	<b>110.7</b>	<b>116.6</b>
<b>B05</b>	82.7	83.3	62.1	71.2	63.5	71.2	60.1	53.8	51.9	55.6	49.3	62.7	87.0
<b>B06</b>	..	..	..	..	..	..	..	..	..	..	..	..	..
<b>B07</b>	139.0	132.2	135.5	152.7	131.8	133.9	141.1	130.4	96.8	128.2	95.5	145.5	132.3
<b>B08</b>	109.3	90.2	88.6	103.5	100.5	109.6	107.7	106.4	128.5	143.4	144.8	139.8	156.3
<b>B09</b>	..	..	..	..	..	..	..	..	..	..	..	..	..
<b>C</b>	<b>108.7</b>	<b>93.2</b>	<b>96.8</b>	<b>102.6</b>	<b>106.2</b>	<b>106.8</b>	<b>110.4</b>	<b>112.3</b>	<b>111.1</b>	<b>110.8</b>	<b>113.2</b>	<b>112.5</b>	<b>116.5</b>
<b>C10</b>	114.4	100.8	104.2	110.3	106.8	98.9	104.6	106.2	105.9	103.9	113.2	110.5	110.0
<b>C11</b>	96.4	84.4	93.4	96.8	97.4	96.1	99.9	98.0	90.2	81.2	75.9	68.8	66.3
<b>C12</b>	37.0	39.9	31.4	35.6	34.7	35.8	32.7	32.0	34.1	37.3	29.2	33.5	34.2
<b>C13</b>	89.6	81.7	96.7	94.7	96.2	97.2	97.1	105.6	97.3	102.8	110.9	113.9	105.6
<b>C14</b>	69.2	70.3	80.5	70.9	73.3	71.6	71.2	71.7	67.7	66.8	71.8	72.2	73.5
<b>C15</b>	69.2	69.6	71.4	74.3	73.0	68.8	69.1	73.1	72.2	70.2	67.9	68.6	72.6
<b>C16</b>	71.6	58.0	61.8	69.8	71.1	73.2	74.5	74.1	78.6	78.4	83.0	81.1	88.6
<b>C17</b>	97.3	91.3	88.4	91.3	87.4	88.6	87.7	91.6	96.9	92.1	95.9	95.7	98.1
<b>C18</b>	99.3	85.1	91.2	93.9	100.3	101.8	102.2	104.2	100.9	99.6	108.0	110.9	117.1
<b>C19</b>	..	..	..	..	..	..	..	..	..	..	..	..	..
<b>C20</b>	122.7	110.4	110.7	115.8	115.1	116.7	110.0	114.5	113.3	112.7	113.3	119.0	112.1
<b>C21</b>	124.6	129.2	121.0	119.6	114.1	111.8	113.6	121.7	119.6	122.9	117.9	110.8	124.7
<b>C22</b>	133.9	121.6	123.3	126.8	139.7	141.2	144.9	145.2	141.8	148.5	152.9	155.1	150.6
<b>C23</b>	107.1	83.2	88.7	98.9	114.0	107.4	112.0	109.7	114.7	107.8	113.2	112.8	115.7
<b>C24</b>	108.9	107.9	111.2	116.0	113.9	115.3	112.4	110.0	111.0	115.1	114.6	113.7	113.6
<b>C25</b>	117.8	103.0	107.8	107.5	104.1	103.1	125.7	129.6	118.5	117.1	135.6	122.1	119.9
<b>C26</b>	137.5	142.1	144.5	142.3	148.7	146.5	149.3	170.5	183.7	166.3	198.0	186.6	198.7
<b>C27</b>	121.2	113.3	111.2	123.5	131.4	131.2	133.7	138.6	133.5	141.2	144.8	141.4	147.5
<b>C28</b>	102.1	78.3	77.3	86.2	95.1	99.8	107.1	105.4	103.6	108.9	108.6	106.8	113.0
<b>C29</b>	127.5	37.5	58.1	101.3	124.1	148.8	149.3	171.3	167.6	182.1	162.9	155.2	161.2
<b>C30</b>	165.5	173.1	156.8	170.0	171.0	198.5	187.8	196.7	195.5	161.0	186.7	192.2	213.7
<b>C31</b>	80.8	67.8	81.3	100.0	102.8	106.6	106.9	109.7	104.7	104.4	114.5	108.7	106.6
<b>C32</b>	80.6	75.4	81.0	83.5	104.5	107.1	115.4	108.7	107.5	96.8	98.8	115.1	110.4
<b>C33</b>	138.8	109.1	91.7	105.4	121.1	95.6	94.3	100.9	111.1	90.3	99.8	106.6	113.3
<b>D</b>	<b>79.2</b>	<b>73.4</b>	<b>71.0</b>	<b>74.5</b>	<b>74.6</b>	<b>74.1</b>	<b>75.4</b>	<b>73.1</b>	<b>72.3</b>	<b>73.1</b>	<b>73.8</b>	<b>72.5</b>	<b>76.8</b>
<b>35</b>	79.2	73.4	71.0	74.5	74.6	74.1	75.4	73.1	72.3	73.1	73.8	72.5	76.8

\* Preliminary data.

„...“ - Confidential data.

Table 4

**Industrial Production Indices**  
(Working day adjusted, 2015 = 100)

NACE.BG - 2008	2018	2019	2020										2021		
	III	III	III	IV	V	VI	VII	VIII	IX	X	XI	XII	I	II	III*
<b>B_TO_E36</b>	<b>109.9</b>	<b>112.6</b>	<b>104.5</b>	<b>86.4</b>	<b>88.0</b>	<b>100.0</b>	<b>103.5</b>	<b>96.7</b>	<b>103.3</b>	<b>108.8</b>	<b>108.4</b>	<b>104.3</b>	<b>99.6</b>	<b>100.2</b>	<b>111.3</b>
<b>B</b>	<b>92.0</b>	<b>95.3</b>	<b>106.9</b>	<b>97.5</b>	<b>92.8</b>	<b>106.1</b>	<b>97.6</b>	<b>105.7</b>	<b>107.8</b>	<b>107.1</b>	<b>94.1</b>	<b>109.9</b>	<b>84.6</b>	<b>105.5</b>	<b>112.7</b>
<b>B05</b>	82.2	79.6	73.6	64.5	45.2	52.8	56.5	67.8	65.4	74.8	64.9	73.2	63.2	64.7	79.5
<b>B06</b>	..	..	..	..	..	..	..	..	..	..	..	..	..	..	..
<b>B07</b>	108.3	109.5	139.0	132.2	135.5	152.7	131.8	133.9	141.1	130.4	96.8	128.2	95.5	140.2	131.2
<b>B08</b>	82.8	101.0	100.9	87.7	90.3	111.8	107.3	117.8	117.3	120.3	146.2	146.6	100.0	108.6	146.6
<b>B09</b>	..	..	..	..	..	..	..	..	..	..	..	..	..	..	..
<b>C</b>	<b>114.0</b>	<b>120.3</b>	<b>108.8</b>	<b>90.9</b>	<b>95.3</b>	<b>108.1</b>	<b>112.3</b>	<b>102.4</b>	<b>111.9</b>	<b>120.2</b>	<b>118.6</b>	<b>107.0</b>	<b>102.8</b>	<b>105.2</b>	<b>117.6</b>
<b>C10</b>	109.3	105.4	113.8	94.6	102.0	113.9	108.0	100.0	110.7	116.9	112.7	108.0	100.1	97.2	109.7
<b>C11</b>	93.3	99.9	89.3	76.8	98.2	118.9	121.8	123.6	115.3	93.6	81.1	75.2	45.3	46.2	56.9
<b>C12</b>	59.9	40.5	37.0	44.0	36.1	37.9	39.7	32.7	32.6	36.4	39.3	40.7	17.7	22.5	34.6
<b>C13</b>	113.7	105.1	98.8	82.7	107.2	104.6	99.7	76.6	93.5	111.3	101.7	90.2	101.5	116.7	115.2
<b>C14</b>	93.0	88.2	66.3	61.9	76.1	75.0	86.0	69.3	70.4	72.6	68.2	63.4	76.1	72.9	71.2
<b>C15</b>	102.3	100.1	67.7	59.6	67.7	86.7	88.6	57.5	68.2	81.9	81.6	61.9	66.8	66.4	74.3
<b>C16</b>	77.7	79.9	69.7	57.2	62.0	74.8	76.4	72.2	78.0	81.0	85.2	74.5	69.0	71.5	87.2
<b>C17</b>	103.8	104.1	101.4	89.8	89.6	93.1	87.1	85.3	84.8	94.8	99.2	88.0	96.2	94.8	102.7
<b>C18</b>	104.7	121.3	100.4	79.5	89.5	94.9	100.3	95.8	100.5	112.8	115.9	104.4	98.2	103.8	118.6
<b>C19</b>	..	..	..	..	..	..	..	..	..	..	..	..	..	..	..
<b>C20</b>	119.2	132.6	133.2	112.6	110.4	119.9	117.9	112.8	109.4	116.3	114.8	109.9	105.1	112.4	121.4
<b>C21</b>	117.3	128.1	136.4	130.5	119.8	125.9	114.2	97.1	109.9	120.5	131.1	126.6	114.5	98.6	139.3
<b>C22</b>	128.1	148.8	140.3	115.8	119.4	130.3	149.6	135.0	150.3	163.2	151.1	131.3	138.7	149.1	157.2
<b>C23</b>	100.7	120.7	104.4	86.0	95.1	107.0	124.3	113.1	120.2	122.8	124.2	95.8	80.5	91.1	112.9
<b>C24</b>	120.5	121.3	114.3	102.4	107.3	117.6	114.3	110.7	111.1	107.7	117.6	114.2	115.2	108.8	121.9
<b>C25</b>	135.9	123.3	120.0	98.9	102.7	114.2	110.7	101.6	129.2	135.5	130.8	128.0	103.0	112.3	121.6
<b>C26</b>	160.2	153.9	143.0	137.3	137.3	147.8	150.4	129.2	143.1	182.2	200.1	178.5	190.1	178.6	210.2
<b>C27</b>	118.6	134.1	126.7	108.2	104.2	128.8	135.8	119.2	137.5	154.0	147.4	125.8	138.0	139.9	155.6
<b>C28</b>	122.0	133.5	106.0	81.0	75.4	90.7	99.2	86.7	107.9	111.9	111.7	104.7	100.1	102.6	118.3
<b>C29</b>	140.5	155.3	129.6	37.3	58.1	109.1	126.5	128.8	153.7	191.1	183.6	153.5	159.1	150.9	160.9
<b>C30</b>	149.5	193.5	193.7	182.3	165.6	168.1	153.8	163.9	159.6	197.8	213.1	132.0	185.9	208.0	252.6
<b>C31</b>	113.9	106.0	81.1	64.6	82.0	106.5	108.9	105.8	109.5	118.1	112.1	101.8	99.2	98.7	107.1
<b>C32</b>	132.8	153.6	81.3	71.5	79.4	93.9	105.6	106.7	121.2	121.4	116.4	86.3	87.8	104.4	111.6
<b>C33</b>	120.2	123.9	138.7	97.7	83.9	108.6	125.6	92.8	97.9	104.9	127.4	119.0	72.5	92.2	114.7
<b>D</b>	<b>102.5</b>	<b>92.1</b>	<b>89.0</b>	<b>64.8</b>	<b>57.2</b>	<b>65.0</b>	<b>69.8</b>	<b>69.0</b>	<b>67.0</b>	<b>65.3</b>	<b>75.6</b>	<b>91.5</b>	<b>93.2</b>	<b>78.6</b>	<b>87.7</b>
<b>D35</b>	102.5	92.1	89.0	64.8	57.2	65.0	69.8	69.0	67.0	65.3	75.6	91.5	93.2	78.6	87.7

\* Preliminary data.

„..“ - Confidential data.