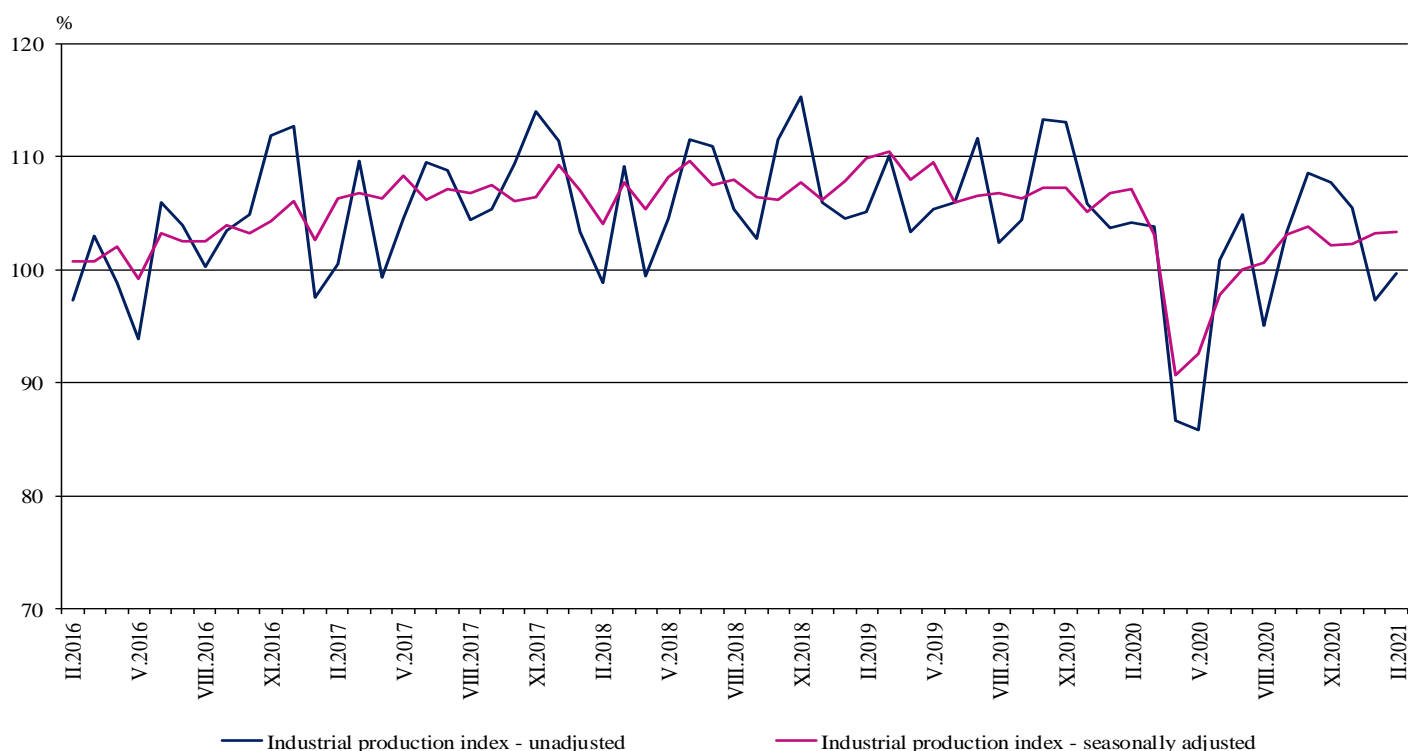


INDUSTRIAL PRODUCTION INDICES IN FEBRUARY 2021¹

According to the preliminary data in February 2021 the Industrial Production Index², seasonally adjusted³, remains unchanged compared to January 2021.

In February 2021 the working day adjusted⁴ Industrial Production Index fell by 3.4% in comparison with the same month of 2020.

Figure 1. Industrial Production Indices (2015 = 100)



¹ February 2021 data are preliminary. The final data on Industrial Production and Turnover Indices for January 2021 can be found on the NSI website: <http://www.nsi.bg/en>.

² Monthly Industrial Production and Industrial turnover indices measure changes in production and turnover values of industrial enterprises. This information can be used to assess the current economic development and for short-term forecasts. Indices do not measure the actual production level, it aims to measure the average change in value of production between two points of time. Indices are compiled on the base of information collected through representative sampling survey on industrial enterprises. The sample covers enterprises with annual turnover more than 97% of total turnover in industry.

Industrial production indices are calculated at constant base year that is to say they are weighted with the structure of the value added at factor costs in the base year.

³ Seasonal adjustment is a statistical method, which eliminates the seasonal component of time series.

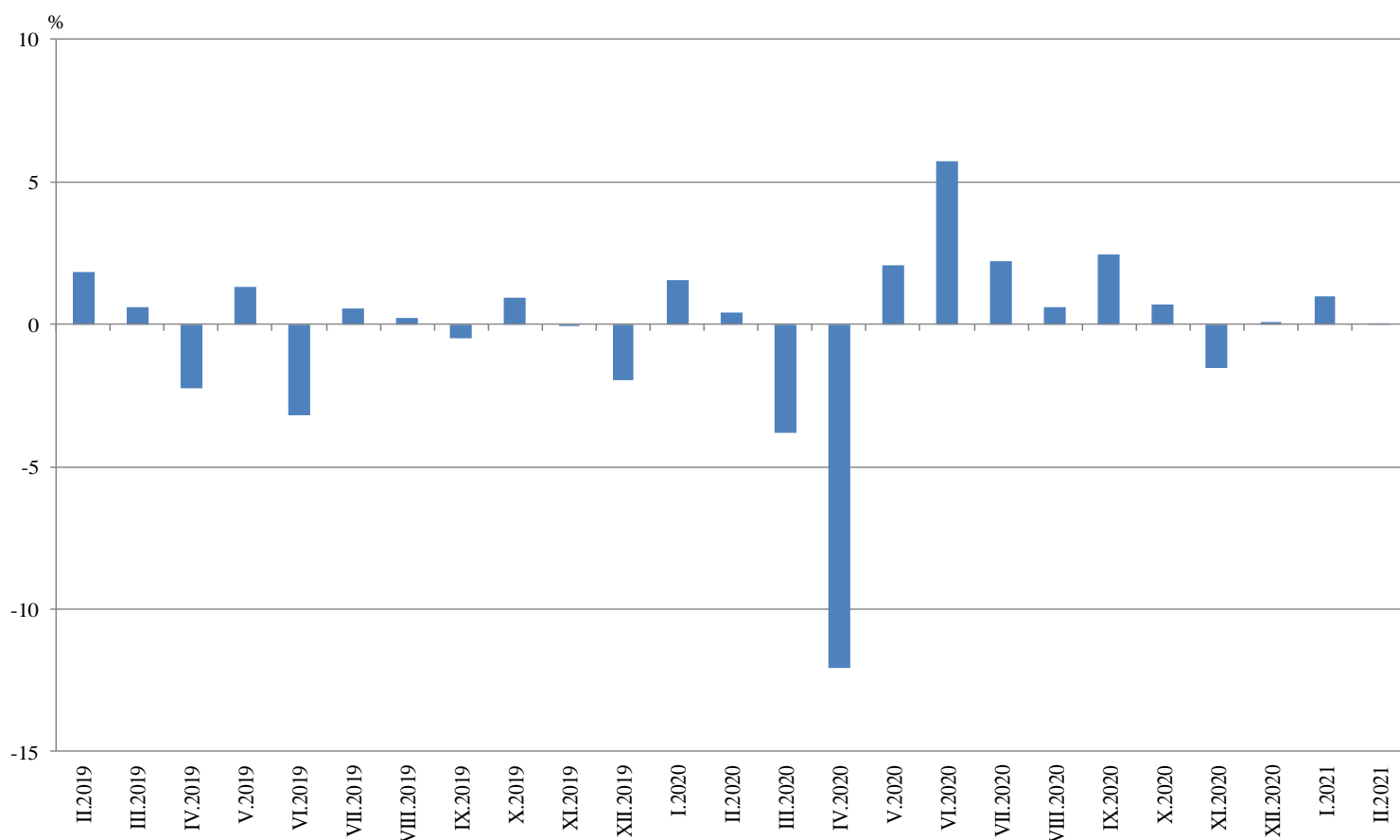
⁴ Working day adjustment is an adjustment for variations caused by calendar effects, different number of calendar and working days in the months, national holidays and outliers (for example the presence of more non-working days in May could contribute to the decline in the production in some activities).

Monthly changes

In February 2021 as compared to January 2021, the seasonally adjusted Industrial Production Index fell in the electricity, gas, steam and air conditioning supply by 1.5% and in the manufacturing by 1.4%, while in the mining and quarrying industry the industrial production increased by 26.6%.

The most significant decrease in the manufacturing was seen in the manufacture of fabricated metal products, except machinery and equipment by 10.0%, in the manufacture of beverages by 8.6%, in the manufacture of computer, electronic and optical products, and in the manufacture of basic pharmaceutical products and pharmaceutical preparations - both by 7.4%. Major increase was seen in the other manufacturing by 15.8%, in the manufacturing of tobacco products - by 13.8%, and in the repair and installation of machinery and equipment by 6.5%.

**Figure 2. Changes of Industrial Production Indices compared to the previous month
(Seasonally adjusted)**

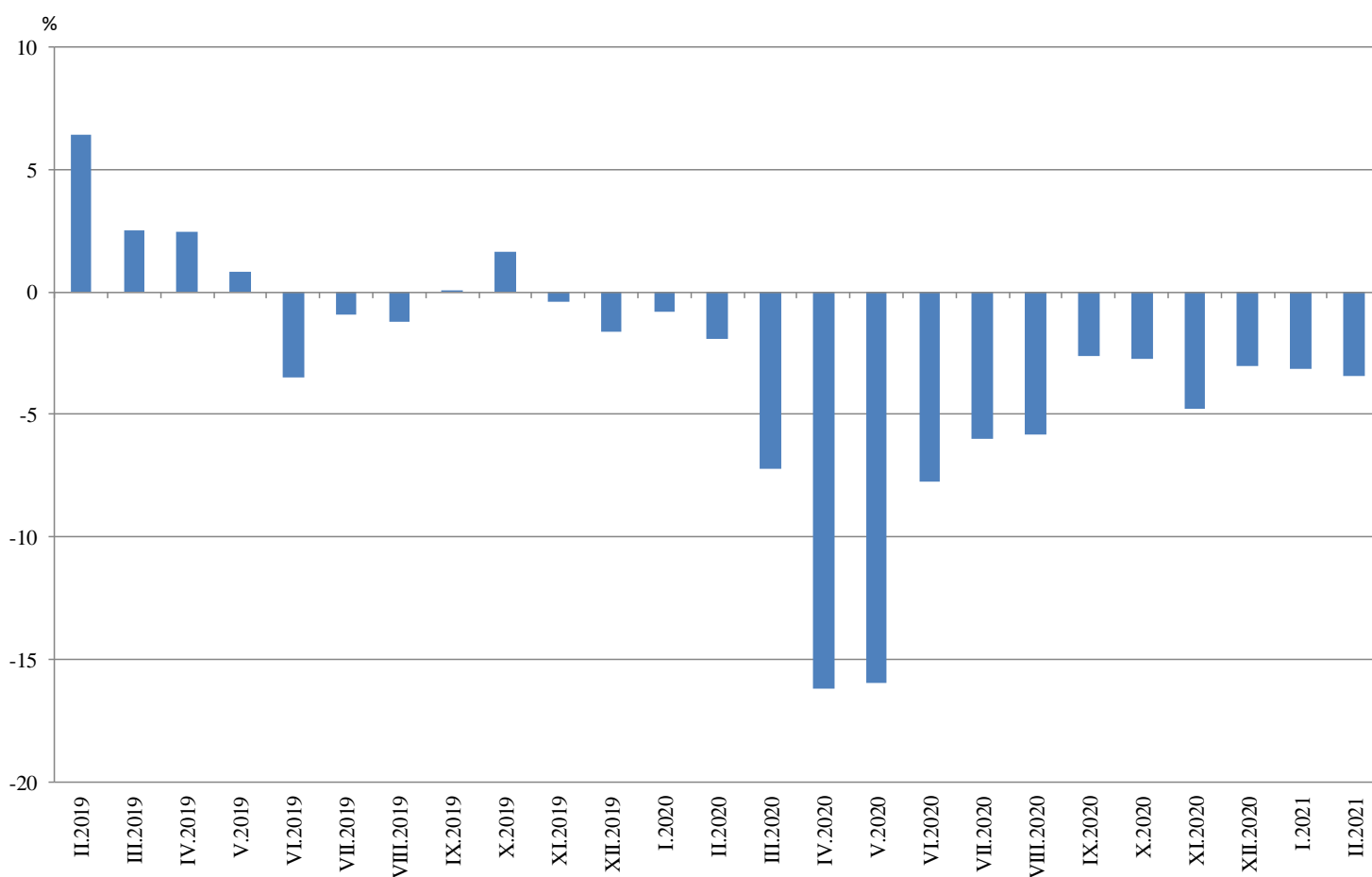


Annual changes

On annual basis in February 2021 Industrial Production Index calculated from working day adjusted data fell in the manufacturing by 4.6% and in the electricity, gas, steam and air conditioning supply by 4.0%, while in the mining and quarrying industry the index remained unchanged.

In the manufacturing, more considerable decrease compared to the same month of the previous year was registered in the other manufacturing by 43.5%, in the manufacture of beverages by 43.0%, in the manufacture of leather and related products by 24.9%, and in the repair and installation of machinery and equipment by 15.8%. Major increase was seen in the manufacture of computer, electronic and optical products by 15.3%, in the manufacture of rubber and plastic products by 13.9%, in the manufacture of textiles by 13.3%, and in the manufacture of electrical equipment by 7.3%.

Figure 3. Changes of Industrial Production Indices compared to the same month of the previous year (Working day adjusted)



Annex

Table 1

Changes of Industrial Production Indices compared to the previous month¹

(Per cent)

Economic activities	NACE.BG - 2008	2020				2021	
		IX	X	XI	XII	I	II*
Industry	B_TO_E36	2.5	0.7	-1.5	0.1	1.0	0.0
Mining and quarrying	B	-4.1	-8.3	-7.5	14.0	-13.0	26.6
Mining of coal and lignite	B05	-15.6	-10.4	-3.5	7.2	-11.4	24.9
Extraction of crude petroleum and natural gas	B06
Mining of metal ores	B07	5.4	-7.6	-25.7	32.4	-25.4	46.7
Other mining and quarrying	B08	-1.7	-1.3	20.8	11.6	1.0	-5.6
Mining support service activities	B09
Manufacturing	C	3.4	1.7	-1.1	-0.2	2.1	-1.4
Manufacture of food products	C10	5.8	1.5	-0.3	-1.9	8.9	-2.2
Manufacture of beverages	C11	4.0	-1.9	-7.9	-10.0	-6.5	-8.6
Manufacture of tobacco products	C12	-8.6	-2.1	6.4	9.6	-21.9	13.8
Manufacture of textiles	C13	-0.1	8.8	-7.9	5.6	8.0	3.0
Manufacture of wearing apparel	C14	-0.5	0.8	-5.6	-1.2	7.4	-0.3
Manufacture of leather and related products	C15	0.3	5.8	-1.2	-2.7	-3.3	0.5
Manufacture of wood and of products of wood and cork, except furniture; manufacture of articles of straw and plaiting materials	C16	1.7	-0.5	6.0	-0.2	5.9	-2.6
Manufacture of paper and paper products	C17	-1.0	4.4	5.8	-5.0	4.1	-0.6
Printing and reproduction of recorded media	C18	0.4	2.0	-3.2	-1.3	8.4	1.1
Manufacture of coke and refined petroleum products	C19
Manufacture of chemicals and chemical products	C20	-5.8	4.1	-1.0	-0.5	0.5	5.2
Manufacture of basic pharmaceutical products and pharmaceutical preparations	C21	1.6	7.1	-1.7	2.7	-4.1	-7.4
Manufacture of rubber and plastic products	C22	2.6	0.3	-2.4	4.7	3.0	1.7
Manufacture of other non-metallic mineral products	C23	4.3	-2.0	4.5	-6.0	5.0	-1.0
Manufacture of basic metals	C24	-2.6	-2.1	0.9	3.7	-0.5	-0.4
Manufacture of fabricated metal products, except machinery and equipment	C25	22.0	3.1	-8.5	-1.2	15.8	-10.0
Manufacture of computer, electronic and optical products	C26	1.9	14.2	7.8	-9.5	19.1	-7.4
Manufacture of electrical equipment	C27	1.9	3.7	-3.7	5.8	2.6	-2.7
Manufacture of machinery and equipment n.e.c.	C28	7.3	-1.6	-1.7	5.2	-0.3	-2.5
Manufacture of motor vehicles, trailers and semi-trailers	C29	0.3	14.7	-2.2	8.7	-10.5	-4.8
Manufacture of other transport equipment	C30	-5.4	4.8	-0.6	-17.6	15.9	2.1
Manufacture of furniture	C31	0.3	2.6	-4.5	-0.3	9.6	-3.7
Other manufacturing	C32	7.7	-5.8	-1.1	-9.9	2.0	15.8
Repair and installation of machinery and equipment	C33	-1.4	7.0	10.2	-18.8	10.6	6.5
Electricity, gas, steam and air conditioning supply	D	1.7	-2.9	-1.2	1.2	0.9	-1.5
Electricity, gas, steam and air conditioning supply	D35	1.7	-2.9	-1.2	1.2	0.9	-1.5

¹ Seasonally adjusted.

* Preliminary data.

„..“ - Confidential data.

Table 2
Changes of Industrial Production Indices compared to the same month of the previous year¹
(Per cent)

Economic activities	NACE.BG - 2008	2020				2021	
		IX	X	XI	XII	I	II*
Industry	B_TO_E36	-2.6	-2.7	-4.8	-3.0	-3.2	-3.4
Mining and quarrying	B	-2.3	-11.7	-15.6	-5.7	-17.5	0.0
Mining of coal and lignite	B05	-29.4	-25.7	-23.6	-21.9	-22.4	-26.1
Extraction of crude petroleum and natural gas	B06
Mining of metal ores	B07	12.5	-9.5	-28.0	-10.7	-25.0	9.0
Other mining and quarrying	B08	1.9	-1.0	22.2	49.9	14.3	32.9
Mining support service activities	B09
Manufacturing	C	-2.2	-1.6	-3.7	-2.5	-2.3	-4.6
Manufacture of food products	C10	-3.7	-6.6	-3.5	-5.8	-2.8	-1.0
Manufacture of beverages	C11	-0.2	-5.0	-11.9	-21.0	-41.0	-43.0
Manufacture of tobacco products	C12	-33.0	-36.1	-29.8	-5.2	-27.9	-6.8
Manufacture of textiles	C13	-3.6	9.8	-2.3	6.0	3.7	13.3
Manufacture of wearing apparel	C14	-15.3	-12.4	-18.2	-16.8	-7.9	-8.8
Manufacture of leather and related products	C15	-29.0	-18.1	-26.6	-21.6	-27.5	-24.9
Manufacture of wood and of products of wood and cork, except furniture; manufacture of articles of straw and plaiting materials	C16	-6.1	-5.9	0.2	-6.1	-1.4	1.7
Manufacture of paper and paper products	C17	-10.3	-7.8	3.1	-4.3	2.8	-1.1
Printing and reproduction of recorded media	C18	-8.3	-6.9	-17.6	-4.9	-0.7	-0.9
Manufacture of coke and refined petroleum products	C19
Manufacture of chemicals and chemical products	C20	-4.2	-2.9	0.8	-5.4	-7.3	-3.7
Manufacture of basic pharmaceutical products and pharmaceutical preparations	C21	2.1	11.6	-2.5	15.4	3.3	-1.5
Manufacture of rubber and plastic products	C22	11.2	8.1	1.0	9.1	14.3	13.9
Manufacture of other non-metallic mineral products	C23	1.8	-2.3	1.1	-13.2	-9.9	-8.0
Manufacture of basic metals	C24	15.2	-12.7	-2.8	14.3	-1.7	-3.0
Manufacture of fabricated metal products, except machinery and equipment	C25	10.4	10.1	2.7	16.0	8.9	-8.8
Manufacture of computer, electronic and optical products	C26	-7.2	9.8	18.7	-5.6	33.0	15.3
Manufacture of electrical equipment	C27	6.7	16.3	4.1	18.2	18.1	7.3
Manufacture of machinery and equipment n.e.c.	C28	-6.7	-12.0	-10.2	2.5	-6.4	-6.9
Manufacture of motor vehicles, trailers and semi-trailers	C29	2.3	19.7	17.6	36.2	0.8	-2.6
Manufacture of other transport equipment	C30	19.3	21.3	11.7	-13.9	3.7	1.3
Manufacture of furniture	C31	7.1	8.5	-0.2	2.6	8.1	2.5
Other manufacturing	C32	-11.8	-30.1	-41.7	-47.2	-45.3	-43.5
Repair and installation of machinery and equipment	C33	-26.4	-21.4	-0.6	-18.5	-28.5	-15.8
Electricity, gas, steam and air conditioning supply	D	-5.5	-4.5	-5.6	-3.7	-1.7	-4.0
Electricity, gas, steam and air conditioning supply	D35	-5.5	-4.5	-5.6	-3.7	-1.7	-4.0

¹ Working day adjusted.

* Preliminary data.

„..“ - Confidential data.

Table 3

Industrial Production Indices
(Seasonally adjusted, 2015 = 100)

NACE.BG - 2008	2020											2021	
	II	III	IV	V	VI	VII	VIII	IX	X	XI	XII	I	II*
B_TO_E36	107.2	103.1	90.7	92.5	97.8	100.0	100.6	103.1	103.8	102.2	102.3	103.3	103.3
B	110.9	112.0	105.2	99.2	109.9	99.2	107.8	103.4	94.9	87.8	100.1	87.1	110.2
B05	85.1	82.7	83.3	62.1	71.2	63.5	71.2	60.1	53.8	51.9	55.6	49.3	61.6
B06
B07	128.6	139.0	132.2	135.5	152.7	131.8	133.9	141.1	130.4	96.8	128.2	95.5	140.2
B08	103.1	109.3	90.2	88.6	103.5	100.5	109.6	107.7	106.4	128.5	143.4	144.8	136.7
B09
C	116.7	108.7	93.2	96.8	102.6	106.2	106.8	110.4	112.3	111.1	110.8	113.2	111.6
C10	112.1	114.4	100.8	104.2	110.3	106.8	98.9	104.6	106.2	105.9	103.9	113.2	110.7
C11	110.3	96.4	84.4	93.4	96.8	97.4	96.1	99.9	98.0	90.2	81.2	75.9	69.3
C12	37.3	37.0	39.9	31.4	35.6	34.7	35.8	32.7	32.0	34.1	37.3	29.2	33.2
C13	102.7	89.6	81.7	96.7	94.7	96.2	97.2	97.1	105.6	97.3	102.8	110.9	114.2
C14	79.6	69.2	70.3	80.5	70.9	73.3	71.6	71.2	71.7	67.7	66.8	71.8	71.6
C15	91.4	69.2	69.6	71.4	74.3	73.0	68.8	69.1	73.1	72.2	70.2	67.9	68.2
C16	79.6	71.6	58.0	61.8	69.8	71.1	73.2	74.5	74.1	78.6	78.4	83.0	80.9
C17	97.2	97.3	91.3	88.4	91.3	87.4	88.6	87.7	91.6	96.9	92.1	95.9	95.3
C18	111.5	99.3	85.1	91.2	93.9	100.3	101.8	102.2	104.2	100.9	99.6	108.0	109.2
C19
C20	124.1	122.7	110.4	110.7	115.8	115.1	116.7	110.0	114.5	113.3	112.7	113.3	119.2
C21	107.4	124.6	129.2	121.0	119.6	114.1	111.8	113.6	121.7	119.6	122.9	117.9	109.2
C22	138.1	133.9	121.6	123.3	126.8	139.7	141.2	144.9	145.2	141.8	148.5	152.9	155.5
C23	121.6	107.1	83.2	88.7	98.9	114.0	107.4	112.0	109.7	114.7	107.8	113.2	112.1
C24	111.5	108.9	107.9	111.2	116.0	113.9	115.3	112.4	110.0	111.0	115.1	114.6	114.0
C25	134.1	117.8	103.0	107.8	107.5	104.1	103.1	125.7	129.6	118.5	117.1	135.6	122.1
C26	160.1	137.5	142.1	144.5	142.3	148.7	146.5	149.3	170.5	183.7	166.3	198.0	183.2
C27	131.3	121.2	113.3	111.2	123.5	131.4	131.2	133.7	138.6	133.5	141.2	144.8	141.0
C28	113.3	102.1	78.3	77.3	86.2	95.1	99.8	107.1	105.4	103.6	108.9	108.6	105.9
C29	156.2	127.5	37.5	58.1	101.3	124.1	148.8	149.3	171.3	167.6	182.1	162.9	155.1
C30	189.8	165.5	173.1	156.8	170.0	171.0	198.5	187.8	196.7	195.5	161.0	186.7	190.6
C31	107.0	80.8	67.8	81.3	100.0	102.8	106.6	106.9	109.7	104.7	104.4	114.5	110.2
C32	205.0	80.6	75.4	81.0	83.5	104.5	107.1	115.4	108.7	107.5	96.8	98.8	114.4
C33	127.1	138.8	109.1	91.7	105.4	121.1	95.6	94.3	100.9	111.1	90.3	99.8	106.2
D	75.7	79.2	73.4	71.0	74.5	74.6	74.1	75.4	73.1	72.3	73.1	73.8	72.7
35	75.7	79.2	73.4	71.0	74.5	74.6	74.1	75.4	73.1	72.3	73.1	73.8	72.7

* Preliminary data.

...“ - Confidential data.

Table 4

Industrial Production Indices
(Working day adjusted, 2015 = 100)

NACE.BG - 2008	2018	2019	2020											2021	
	II	II	II	III	IV	V	VI	VII	VIII	IX	X	XI	XII	I	II*
B_TO_E36	99.3	105.7	103.7	104.5	86.4	88.0	100.0	103.5	96.7	103.3	108.8	108.4	104.3	99.6	100.2
B	90.3	106.7	105.2	106.9	97.5	92.8	106.1	97.6	105.7	107.8	107.1	94.1	109.9	84.6	105.2
B05	74.5	100.2	87.6	73.6	64.5	45.2	52.8	56.5	67.8	65.4	74.8	64.9	73.2	63.2	64.7
B06
B07	112.9	121.2	128.6	139.0	132.2	135.5	152.7	131.8	133.9	141.1	130.4	96.8	128.2	95.5	140.2
B08	79.2	91.6	80.3	100.9	87.7	90.3	111.8	107.3	117.8	117.3	120.3	146.2	146.6	100.0	106.8
B09
C	100.0	109.3	110.0	108.8	90.9	95.3	108.1	112.3	102.4	111.9	120.2	118.6	107.0	102.8	104.9
C10	89.6	96.4	98.5	113.8	94.6	102.0	113.9	108.0	100.0	110.7	116.9	112.7	108.0	100.1	97.5
C11	66.4	75.5	81.0	89.3	76.8	98.2	118.9	121.8	123.6	115.3	93.6	81.1	75.2	45.3	46.1
C12	32.2	21.9	24.1	37.0	44.0	36.1	37.9	39.7	32.7	32.6	36.4	39.3	40.7	17.7	22.5
C13	93.0	90.8	102.2	98.8	82.7	107.2	104.6	99.7	76.6	93.5	111.3	101.7	90.2	101.5	115.7
C14	91.6	84.4	79.7	66.3	61.9	76.1	75.0	86.0	69.3	70.4	72.6	68.2	63.4	76.1	72.6
C15	97.5	96.5	87.8	67.7	59.6	67.7	86.7	88.6	57.5	68.2	81.9	81.6	61.9	66.8	65.9
C16	69.8	71.5	70.6	69.7	57.2	62.0	74.8	76.4	72.2	78.0	81.0	85.2	74.5	69.0	71.8
C17	97.0	94.5	95.7	101.4	89.8	89.6	93.1	87.1	85.3	84.8	94.8	99.2	88.0	96.2	94.7
C18	89.3	112.0	105.3	100.4	79.5	89.5	94.9	100.3	95.8	100.5	112.8	115.9	104.4	98.2	104.4
C19
C20	103.0	112.0	116.8	133.2	112.6	110.4	119.9	117.9	112.8	109.4	116.3	114.8	109.9	105.1	112.5
C21	102.9	110.8	99.3	136.4	130.5	119.8	125.9	114.2	97.1	109.9	120.5	131.1	126.6	114.5	97.8
C22	114.4	130.1	130.5	140.3	115.8	119.4	130.3	149.6	135.0	150.3	163.2	151.1	131.3	138.7	148.7
C23	82.9	95.3	98.4	104.4	86.0	95.1	107.0	124.3	113.1	120.2	122.8	124.2	95.8	80.5	90.6
C24	105.3	110.4	112.0	114.3	102.4	107.3	117.6	114.3	110.7	111.1	107.7	117.6	114.2	115.2	108.7
C25	111.8	121.3	123.2	120.0	98.9	102.7	114.2	110.7	101.6	129.2	135.5	130.8	128.0	103.0	112.4
C26	129.6	146.4	152.4	143.0	137.3	137.3	147.8	150.4	129.2	143.1	182.2	200.1	178.5	190.1	175.7
C27	101.2	124.1	130.5	126.7	108.2	104.2	128.8	135.8	119.2	137.5	154.0	147.4	125.8	138.0	140.0
C28	111.2	118.0	109.6	106.0	81.0	75.4	90.7	99.2	86.7	107.9	111.9	111.7	104.7	100.1	102.0
C29	131.4	148.3	154.5	129.6	37.3	58.1	109.1	126.5	128.8	153.7	191.1	183.6	153.5	159.1	150.4
C30	126.6	177.4	204.9	193.7	182.3	165.6	168.1	153.8	163.9	159.6	197.8	213.1	132.0	185.9	207.5
C31	101.6	97.7	96.2	81.1	64.6	82.0	106.5	108.9	105.8	109.5	118.1	112.1	101.8	99.2	98.7
C32	119.4	146.4	183.6	81.3	71.5	79.4	93.9	105.6	106.7	121.2	121.4	116.4	86.3	87.8	103.8
C33	100.9	124.9	109.4	138.7	97.7	83.9	108.6	125.6	92.8	97.9	104.9	127.4	119.0	72.5	92.1
D	99.7	91.8	83.2	89.0	64.8	57.2	65.0	69.8	69.0	67.0	65.3	75.6	91.5	93.2	79.9
D35	99.7	91.8	83.2	89.0	64.8	57.2	65.0	69.8	69.0	67.0	65.3	75.6	91.5	93.2	79.9

* Preliminary data.

„..“ - Confidential data.