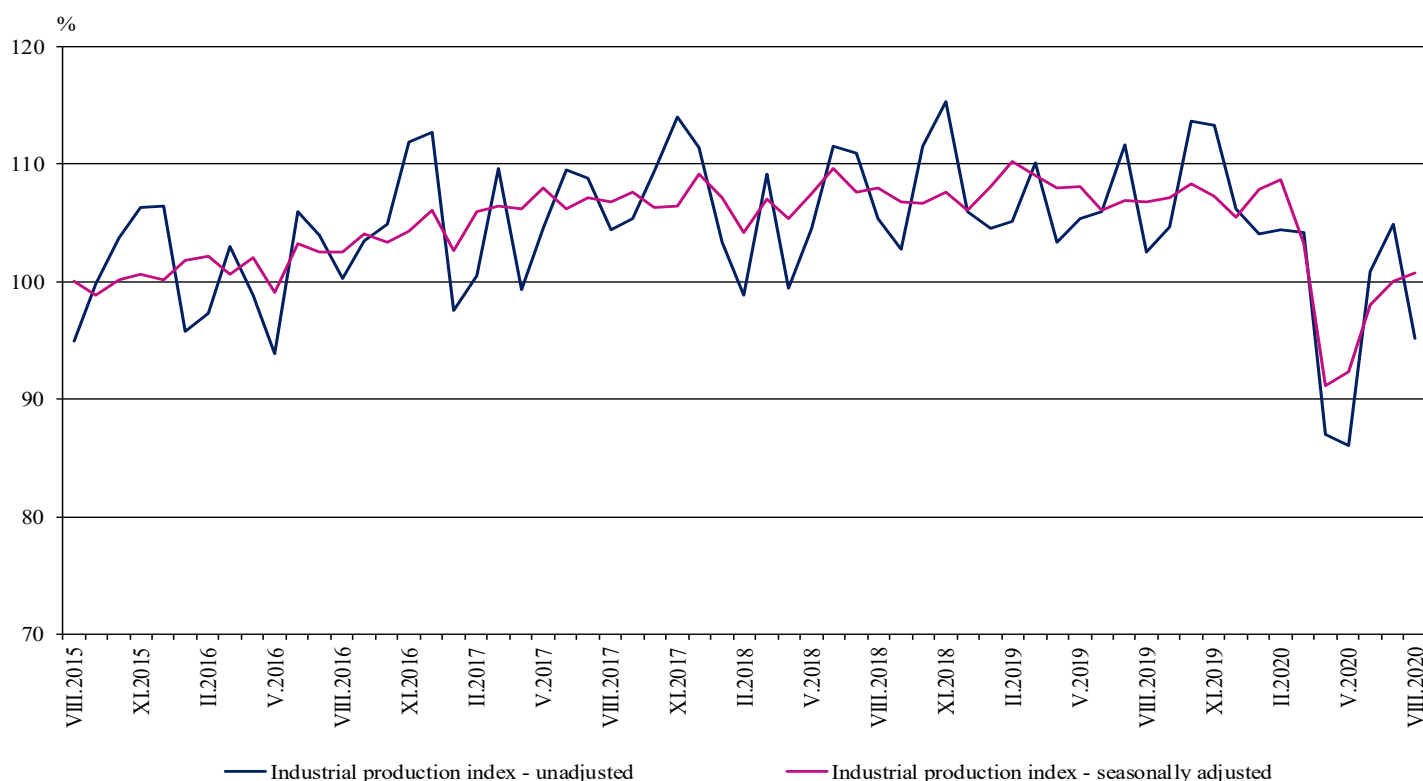


INDUSTRIAL PRODUCTION INDICES IN AUGUST 2020¹

According to the preliminary data in August 2020 the Industrial Production Index², seasonally adjusted³, increased by 0.7% as compared to July 2020.

In August 2020 the working day adjusted⁴ Industrial Production Index fell by 5.7% in comparison with the same month of 2019.

Figure 1. Industrial Production Indices (2015 = 100)



¹ August 2020 data are preliminary. The final data on Industrial Production and Turnover Indices for July 2020 can be found on the NSI website: <http://www.nsi.bg/en>.

² Monthly Industrial Production and Industrial turnover indices measure changes in production and turnover values of industrial enterprises. This information can be used to assess the current economic development and for short-term forecasts. Indices do not measure the actual production level, it aims to measure the average change in value of production between two points of time. Indices are compiled on the base of information collected through representative sampling survey on industrial enterprises. The sample covers enterprises with annual turnover more than 97% of total turnover in industry.

Industrial production indices are calculated at constant base year that is to say they are weighted with the structure of the value added at factor costs in the base year.

³ Seasonal adjustment is a statistical method, which eliminates the seasonal component of time series.

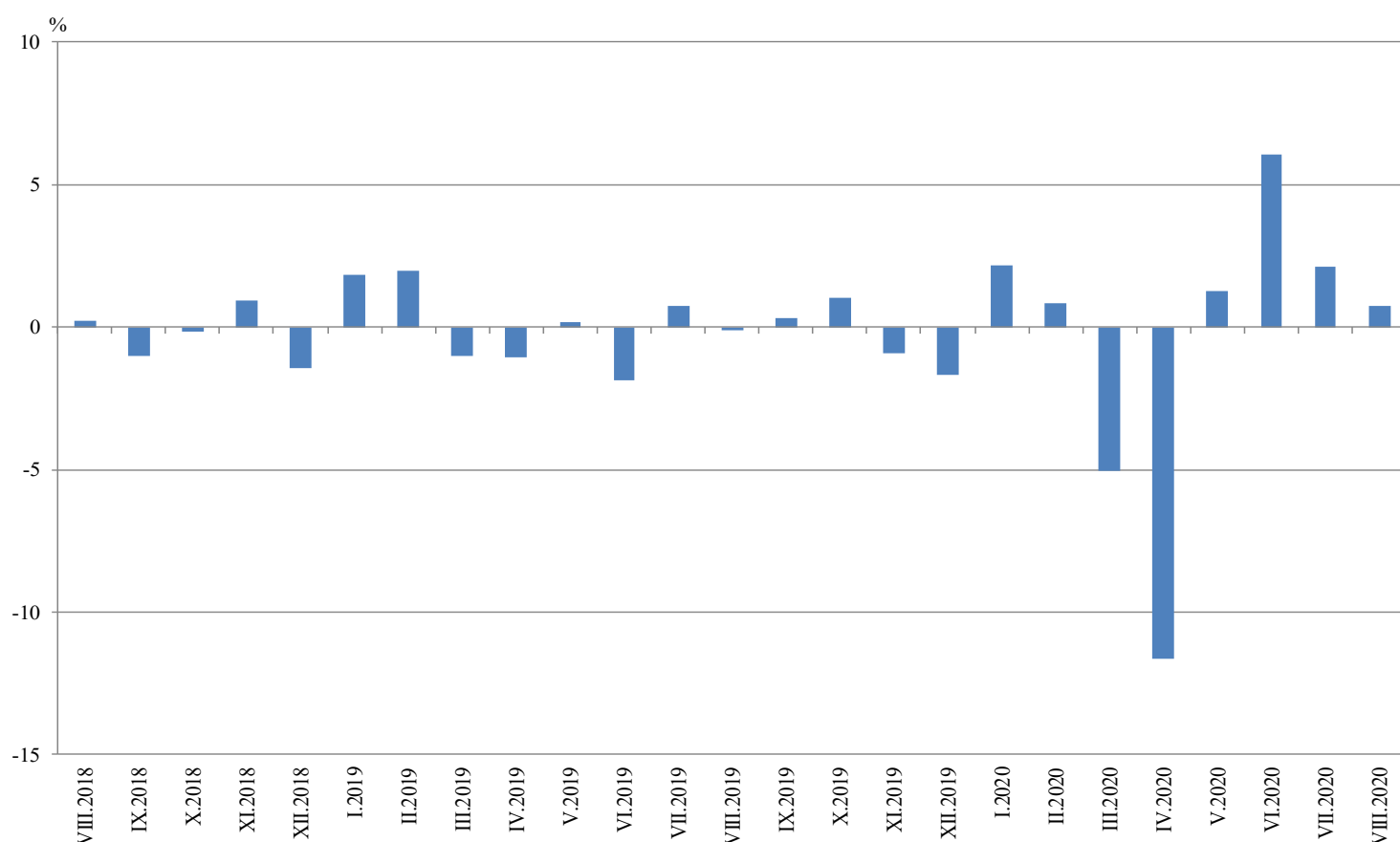
⁴ Working day adjustment is an adjustment for variations caused by calendar effects, different number of calendar and working days in the months, national holidays and outliers (for example the presence of more non-working days in May could contribute to the decline in the production in some activities).

Monthly changes

In August 2020 as compared to July 2020, the seasonally adjusted Industrial Production Index rose in the mining and quarrying industry by 8.6% and in the manufacturing by 0.7%, while the production went down in the electricity, gas, steam and air conditioning supply by 0.7%.

The most significant production increases in the manufacturing were registered in the manufacture of motor vehicles, trailers and semi-trailers by 20.5%, in the manufacture of other transport equipment by 16.4%, in the manufacture of machinery and equipment n.e.c by 4.4%, in the manufacture of furniture by 4.0%. Important decreases were seen in the repair and installation of machinery and equipment by 21.7%, in the manufacture of leather and related products by 14.3%, in the manufacture of food products by 6.9%, in the manufacture of other non-metallic mineral products by 5.4%.

**Figure 2. Changes of Industrial Production Indices compared to the previous month
(Seasonally adjusted)**

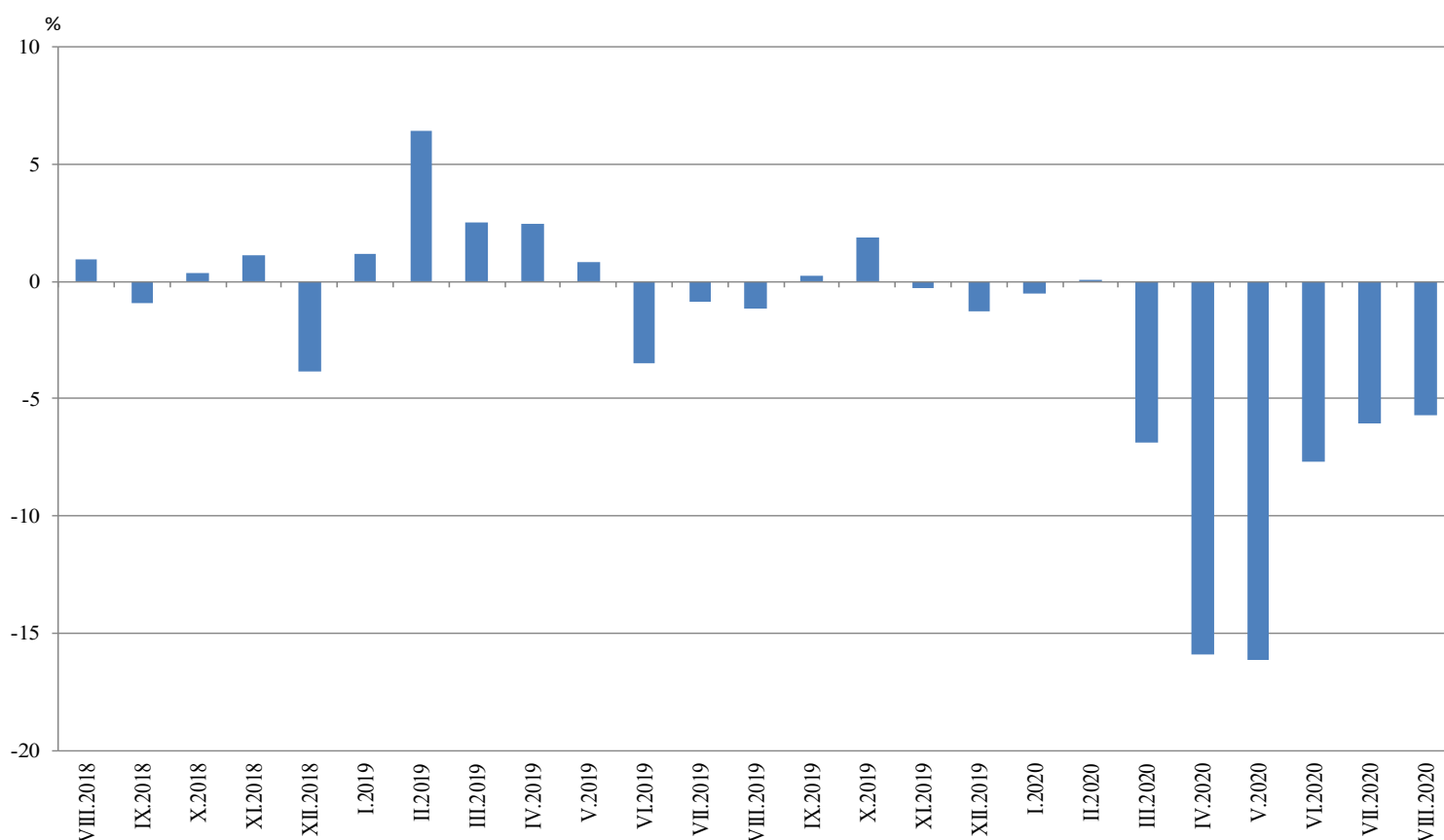


Annual changes

On annual basis in August 2020 Industrial Production Index calculated from working day adjusted data fell in the electricity, gas, steam and air conditioning supply by 9.8% and in the manufacturing by 6.5%, while the production went up in the mining and quarrying industry by 13.6%.

In the manufacturing, the more considerable decreases compared to the same month of the previous year were registered in the manufacture of leather and related products by 25.9%, in the repair and installation of machinery and equipment by 25.4%, in the manufacture of fabricated metal products, except machinery and equipment by 18.8%, in the manufacture of computer, electronic and optical products by 13.8%. Major increases were seen in the manufacture of other transport equipment by 20.9%, in the manufacture of basic metals by 11.6%, in the manufacture of motor vehicles, trailers and semi-trailers by 9.0%, in the manufacture of rubber and plastic products by 7.0%.

Figure 3. Changes of Industrial Production Indices compared to the same month of the previous year (Working day adjusted)



Annex

Table 1

Changes of Industrial Production Indices compared to the previous month¹

(Per cent)

Economic activities	NACE.BG - 2008	2020					
		III	IV	V	VI	VII	VIII*
Industry	B_TO_E36	-5.0	-11.7	1.3	6.1	2.1	0.7
Mining and quarrying	B	0.9	-5.6	-5.6	10.2	-9.2	8.6
Mining of coal and lignite	B05	-1.4	-0.6	-25.0	14.1	-10.7	12.5
Extraction of crude petroleum and natural gas	B06
Mining of metal ores	B07	8.0	-4.9	2.5	12.7	-13.6	1.4
Other mining and quarrying	B08	2.6	-18.3	-2.2	17.2	-3.3	8.6
Mining support service activities	B09
Manufacturing	C	-6.9	-13.2	2.5	6.2	3.3	0.7
Manufacture of food products	C10	-0.7	-12.2	3.0	6.2	-3.6	-6.9
Manufacture of beverages	C11	-14.9	-14.1	13.6	4.5	1.0	-1.0
Manufacture of tobacco products	C12	2.5	3.6	-18.4	14.8	-3.7	3.9
Manufacture of textiles	C13	-12.9	-9.4	18.7	-2.0	1.4	0.8
Manufacture of wearing apparel	C14	-13.8	1.5	25.3	-19.0	3.9	-1.8
Manufacture of leather and related products	C15	-28.6	7.0	12.7	8.7	-0.4	-14.3
Manufacture of wood and of products of wood and cork, except furniture; manufacture of articles of straw and plaiting materials	C16	-9.8	-19.5	6.1	14.1	1.8	3.2
Manufacture of paper and paper products	C17	-0.9	-6.5	-3.0	2.5	-4.9	0.9
Printing and reproduction of recorded media	C18	-12.4	-14.5	5.8	3.8	7.0	0.9
Manufacture of coke and refined petroleum products	C19
Manufacture of chemicals and chemical products	C20	-1.5	-8.5	-2.0	4.6	0.7	0.8
Manufacture of basic pharmaceutical products and pharmaceutical preparations	C21	17.2	3.7	-6.8	-0.8	-5.3	-2.5
Manufacture of rubber and plastic products	C22	-5.4	-9.8	0.0	4.9	10.4	1.0
Manufacture of other non-metallic mineral products	C23	-12.4	-12.9	-0.7	12.5	14.7	-5.4
Manufacture of basic metals	C24	-3.7	-2.6	5.8	2.9	-1.6	2.4
Manufacture of fabricated metal products, except machinery and equipment	C25	-14.3	-13.7	8.0	-3.1	-4.1	1.8
Manufacture of computer, electronic and optical products	C26	-15.3	3.2	0.3	-1.4	4.1	-1.3
Manufacture of electrical equipment	C27	-9.5	-7.9	-1.4	11.7	6.4	-0.5
Manufacture of machinery and equipment n.e.c.	C28	-9.7	-22.9	-2.8	12.6	10.2	4.4
Manufacture of motor vehicles, trailers and semi-trailers	C29	-19.4	-68.1	48.2	57.2	19.7	20.5
Manufacture of other transport equipment	C30	-12.9	7.4	-9.2	4.0	1.4	16.4
Manufacture of furniture	C31	-25.5	-11.7	16.7	24.4	2.9	4.0
Other manufacturing	C32	-60.6	-3.4	7.5	1.5	28.0	1.4
Repair and installation of machinery and equipment	C33	9.4	-21.9	-15.9	14.2	16.6	-21.7
Electricity, gas, steam and air conditioning supply	D	4.9	-10.2	-3.1	5.1	0.0	-0.7
Electricity, gas, steam and air conditioning supply	D35	4.9	-10.2	-3.1	5.1	0.0	-0.7

¹ Seasonally adjusted.

* Preliminary data.

„..“ - Confidential data.

Table 2

Changes of Industrial Production Indices compared to the same month of the previous year¹
(Per cent)

Economic activities	NACE.BG - 2008	2020					
		III	IV	V	VI	VII	VIII*
Industry	B_TO_E36	-6.8	-15.9	-16.1	-7.7	-6.1	-5.7
Mining and quarrying	B	12.2	8.8	-8.1	16.4	-3.1	13.6
Mining of coal and lignite	B05	-7.4	12.0	-42.5	-7.1	-20.5	-6.6
Extraction of crude petroleum and natural gas	B06
Mining of metal ores	B07	26.9	13.6	11.5	30.0	4.9	25.2
Other mining and quarrying	B08	-2.8	-10.6	-16.5	9.5	-2.3	9.3
Mining support service activities	B09
Manufacturing	C	-9.7	-18.8	-16.9	-9.7	-5.9	-6.5
Manufacture of food products	C10	8.0	-7.2	-6.0	4.2	-0.6	-10.9
Manufacture of beverages	C11	-11.5	-26.6	-11.5	-7.3	-2.9	-8.5
Manufacture of tobacco products	C12	-7.7	-6.7	-46.3	-6.9	-30.3	-6.6
Manufacture of textiles	C13	-5.2	-10.2	8.0	-5.5	2.6	4.5
Manufacture of wearing apparel	C14	-25.7	-19.6	1.9	-15.4	-12.0	-12.4
Manufacture of leather and related products	C15	-34.4	-33.0	-29.1	-9.5	-10.9	-25.9
Manufacture of wood and of products of wood and cork, except furniture; manufacture of articles of straw and plaiting materials	C16	-12.7	-24.3	-23.8	-2.7	-7.1	0.1
Manufacture of paper and paper products	C17	-2.6	-9.5	-16.1	-7.0	-15.0	-10.3
Printing and reproduction of recorded media	C18	-17.4	-33.5	-31.4	-23.2	-16.2	-10.3
Manufacture of coke and refined petroleum products	C19
Manufacture of chemicals and chemical products	C20	0.0	-2.4	-10.6	-0.8	-1.4	5.9
Manufacture of basic pharmaceutical products and pharmaceutical preparations	C21	7.1	19.0	4.2	1.6	-10.0	-2.3
Manufacture of rubber and plastic products	C22	-6.0	-15.3	-13.9	-8.5	6.0	7.0
Manufacture of other non-metallic mineral products	C23	-13.4	-19.6	-19.1	-8.5	7.8	1.5
Manufacture of basic metals	C24	-5.6	-4.3	16.1	31.0	-1.6	11.6
Manufacture of fabricated metal products, except machinery and equipment	C25	-6.3	-13.9	-5.5	-14.1	-11.4	-18.8
Manufacture of computer, electronic and optical products	C26	-7.4	-7.1	-2.4	-12.3	-4.8	-13.8
Manufacture of electrical equipment	C27	-6.1	-18.2	-18.8	-2.8	7.3	2.2
Manufacture of machinery and equipment n.e.c.	C28	-20.4	-37.4	-39.2	-29.4	-19.1	-11.2
Manufacture of motor vehicles, trailers and semi-trailers	C29	-19.6	-73.9	-62.6	-26.0	-17.7	9.0
Manufacture of other transport equipment	C30	0.1	6.1	-0.1	18.1	4.7	20.9
Manufacture of furniture	C31	-23.7	-31.5	-22.5	-2.3	-1.2	5.6
Other manufacturing	C32	-47.1	-44.2	-44.6	-46.1	-35.2	-9.0
Repair and installation of machinery and equipment	C33	11.9	-21.7	-29.7	-24.8	3.4	-25.4
Electricity, gas, steam and air conditioning supply	D	-0.4	-10.8	-15.6	-8.5	-9.7	-9.8
Electricity, gas, steam and air conditioning supply	D35	-0.4	-10.8	-15.6	-8.5	-9.7	-9.8

¹ Working day adjusted.

* Preliminary data.

„..“ - Confidential data.

Table 3

Industrial Production Indices
(Seasonally adjusted, 2015 = 100)

NACE.BG - 2008	2019					2020							
	VIII	IX	X	XI	XII	I	II	III	IV	V	VI	VII	VIII*
B_TO_E36	106.8	107.2	108.3	107.3	105.5	107.8	108.7	103.2	91.2	92.4	98.0	100.1	100.8
B	95.6	106.1	107.0	102.9	107.0	103.8	111.1	112.0	105.8	99.8	110.0	99.9	108.5
B05	76.9	87.1	78.4	71.8	74.8	66.2	85.3	84.1	83.6	62.7	71.5	63.9	71.9
B06
B07	106.9	125.4	144.0	134.4	143.5	127.7	128.7	139.0	132.2	135.5	152.7	132.0	133.8
B08	100.7	106.2	105.0	108.4	100.8	130.5	107.2	109.9	89.8	87.9	103.0	99.6	108.2
B09
C	113.9	113.9	116.0	115.8	113.3	118.1	116.5	108.5	94.2	96.6	102.6	106.0	106.7
C10	110.1	107.7	113.8	109.5	110.0	120.2	115.9	115.1	101.0	104.1	110.6	106.6	99.3
C11	107.2	105.5	108.3	103.8	99.2	118.6	111.7	95.1	81.7	92.8	97.0	97.9	96.9
C12	41.7	48.8	47.3	49.2	43.7	39.2	39.2	40.2	41.7	34.0	39.0	37.6	39.1
C13	92.5	100.8	98.3	99.4	98.1	110.8	102.6	89.3	80.9	96.0	94.1	95.5	96.2
C14	81.6	84.1	83.0	82.2	79.1	80.0	79.6	68.6	69.6	87.2	70.7	73.4	72.1
C15	84.6	91.4	94.9	104.6	89.8	92.8	86.8	61.9	66.2	74.7	81.2	80.8	69.3
C16	73.3	79.3	78.5	78.8	83.9	86.0	79.3	71.6	57.6	61.1	69.7	71.0	73.2
C17	96.8	95.9	98.1	96.2	96.6	95.1	98.9	97.9	91.6	88.9	91.1	86.7	87.5
C18	113.8	112.8	113.9	123.8	105.9	111.9	113.5	99.5	85.0	90.0	93.4	99.9	100.8
C19
C20	109.9	114.3	118.0	112.3	119.0	118.6	124.2	122.3	111.9	109.7	114.7	115.6	116.5
C21	111.8	108.1	110.4	122.0	107.7	114.8	107.0	125.4	130.0	121.2	120.3	114.0	111.1
C22	133.7	133.0	136.9	140.9	139.1	139.4	140.7	133.1	120.0	120.0	125.9	139.0	140.4
C23	108.4	110.2	112.4	115.2	122.5	123.0	118.5	103.8	90.4	89.7	101.0	115.8	109.5
C24	106.5	108.0	111.6	111.5	112.1	113.5	113.2	109.1	106.2	112.4	115.7	113.8	116.5
C25	128.2	117.2	117.7	117.2	101.6	125.8	137.9	118.2	102.1	110.2	106.8	102.5	104.3
C26	167.8	158.7	157.8	160.4	177.6	156.5	163.3	138.2	142.6	143.1	141.1	146.9	145.0
C27	128.3	126.4	121.6	127.8	121.5	126.2	132.6	120.0	110.6	109.0	121.8	129.5	128.9
C28	112.3	117.2	121.1	115.4	107.8	116.4	113.3	102.2	78.8	76.6	86.2	95.0	99.1
C29	148.8	151.5	150.6	149.6	128.0	152.9	151.7	122.2	39.1	57.9	90.9	108.9	131.1
C30	168.5	157.9	167.2	179.9	174.1	184.5	191.3	166.6	179.0	162.6	169.1	171.5	199.7
C31	102.4	99.8	101.0	102.5	98.5	105.7	105.4	78.5	69.4	81.0	100.7	103.7	107.8
C32	121.7	135.0	158.9	184.4	180.5	175.7	200.4	79.0	76.3	82.0	83.2	106.6	108.1
C33	126.8	126.9	128.9	114.2	108.8	140.9	128.1	140.2	109.5	92.1	105.1	122.6	96.0
D	82.3	81.5	77.8	76.9	77.6	77.9	78.1	81.9	73.5	71.3	74.9	74.9	74.4
35	82.3	81.5	77.8	76.9	77.6	77.9	78.1	81.9	73.5	71.3	74.9	74.9	74.4

* Preliminary data.

„..“ - Confidential data.

Table 4

Industrial Production Indices
(Working day adjusted, 2015 = 100)

NACE.BG - 2008	2017	2018	2019					2020							
	VIII	VIII	VIII	IX	X	XI	XII	I	II	III	IV	V	VI	VII	VIII*
B_TO_E36	103.0	104.0	102.8	106.2	112.1	114.0	107.9	103.1	105.2	104.9	86.7	87.8	100.0	103.5	96.9
B	110.6	92.1	93.0	110.3	121.3	111.5	116.5	102.6	105.5	106.9	97.5	93.0	106.3	97.5	105.7
B05	92.3	75.5	72.6	92.6	100.7	85.0	93.6	81.7	87.8	73.6	64.5	45.2	52.8	56.2	67.8
B06
B07	127.1	105.4	106.9	125.4	144.0	134.4	143.5	127.7	128.7	139.0	132.2	135.5	152.7	132.0	133.8
B08	86.0	102.1	107.8	117.3	119.6	120.6	99.7	86.6	82.2	100.9	87.7	90.3	112.5	107.3	117.8
B09
C	106.1	111.0	109.9	114.4	122.1	123.2	109.7	104.9	110.7	108.6	91.2	95.1	108.1	112.3	102.7
C10	105.9	106.4	113.3	115.1	125.2	116.8	114.7	103.1	100.5	113.9	95.1	101.7	113.8	108.0	101.0
C11	117.7	126.7	135.0	117.0	98.1	92.2	96.8	75.7	81.0	89.3	75.2	98.2	118.8	121.9	123.6
C12	73.9	46.5	35.0	48.7	57.0	56.0	43.0	25.3	24.8	37.4	44.2	36.3	38.5	39.7	32.7
C13	76.7	81.1	73.1	97.1	101.2	104.1	85.3	96.7	100.7	99.9	82.4	106.9	104.5	99.7	76.4
C14	90.5	89.7	79.0	83.1	82.9	83.8	76.2	82.6	79.9	66.2	62.0	78.2	75.0	85.8	69.2
C15	81.5	80.3	75.1	95.4	99.9	111.2	79.5	92.7	86.6	65.0	59.3	68.8	88.8	91.5	55.7
C16	82.0	75.4	72.4	83.0	86.2	85.0	79.3	70.5	70.4	69.7	56.8	61.2	74.7	76.4	72.5
C17	101.7	99.8	94.7	94.5	102.8	96.3	92.0	93.6	96.3	101.4	89.9	89.1	93.1	86.5	84.9
C18	93.2	100.1	106.2	109.7	121.0	140.7	109.9	98.9	105.9	100.4	79.9	88.8	94.8	100.3	95.3
C19
C20	126.3	115.6	106.0	114.2	119.8	113.9	116.2	109.7	116.5	132.5	114.4	109.2	118.6	118.2	112.2
C21	97.4	102.3	99.5	107.4	108.1	134.4	109.5	111.5	99.2	136.8	131.0	118.7	126.4	114.5	97.2
C22	119.2	121.1	126.4	135.2	151.0	149.5	120.3	123.5	131.0	139.9	116.0	118.0	130.7	149.8	135.3
C23	108.8	114.1	113.4	118.1	125.8	122.9	110.3	87.5	96.8	104.4	87.8	95.5	107.9	126.2	115.1
C24	96.4	110.7	99.3	96.4	123.4	121.0	100.0	119.2	112.1	114.5	102.7	107.4	117.6	114.3	110.9
C25	134.6	130.1	128.2	120.1	120.3	128.8	113.2	92.1	125.6	119.9	97.7	105.2	114.2	109.7	104.1
C26	117.3	131.3	150.3	154.6	165.5	168.7	189.6	143.3	153.7	143.1	137.9	136.4	147.7	150.0	129.5
C27	89.8	113.3	115.9	128.7	132.5	141.6	106.4	115.5	130.2	125.9	107.6	103.1	128.3	135.1	118.5
C28	104.4	103.5	97.3	115.5	127.3	124.3	102.0	105.1	109.7	106.0	80.9	75.6	91.1	99.5	86.4
C29	95.0	116.3	123.8	151.8	158.3	156.7	114.2	157.0	155.4	126.6	40.0	58.1	107.7	115.5	134.9
C30	77.6	89.4	135.9	133.7	163.0	190.8	153.3	182.2	204.9	193.7	176.2	168.4	168.1	153.8	164.3
C31	101.7	103.5	100.4	102.2	108.8	112.4	99.2	91.3	95.8	80.9	64.7	81.3	106.5	108.9	106.0
C32	141.7	132.0	118.0	137.3	173.6	199.7	163.3	161.3	182.7	81.3	73.2	81.3	93.9	108.6	107.4
C33	92.4	138.8	124.4	133.1	133.5	128.1	146.1	102.2	109.1	138.7	97.8	83.9	107.4	126.8	92.8
D	87.3	79.4	76.4	71.7	70.0	81.0	97.1	97.7	85.0	91.8	65.2	57.3	65.0	69.8	68.9
D35	87.3	79.4	76.4	71.7	70.0	81.0	97.1	97.7	85.0	91.8	65.2	57.3	65.0	69.8	68.9

* Preliminary data.

„..“ - Confidential data.