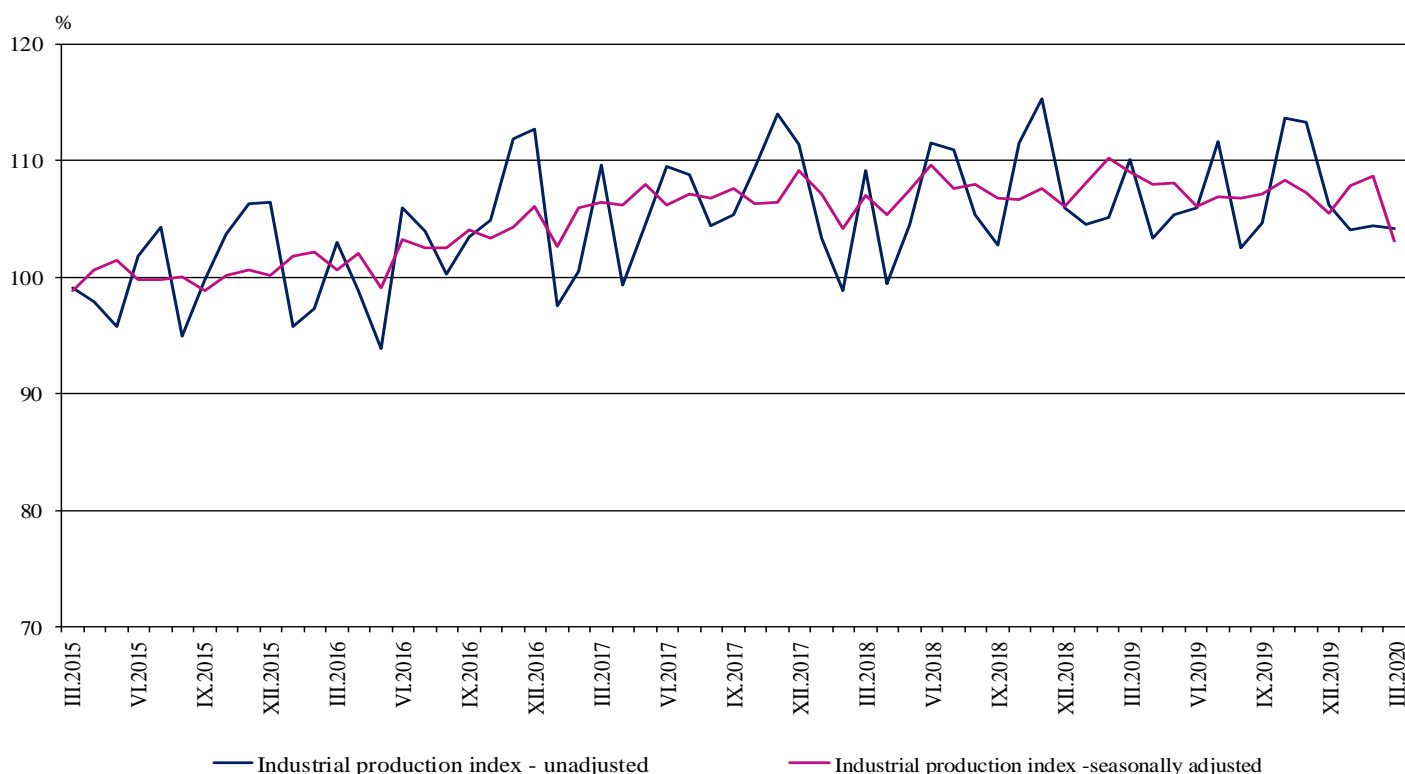


INDUSTRIAL PRODUCTION INDICES IN MARCH 2020¹

According to the preliminary data in March 2020 the Industrial Production Index², seasonally adjusted³, went down by 5.1% as compared to February 2020.

In March 2020 the working day adjusted⁴ Industrial Production Index fell by 6.9% in comparison with the same month of 2019.

Figure 1. Industrial Production Indices (2015 = 100)



¹ March 2020 data are preliminary. The final data on Industrial Production and Turnover Indices for February 2020 can be found on the NSI website: <http://www.nsi.bg/en>.

² Monthly Industrial Production and Industrial turnover indices measure changes in production and turnover values of industrial enterprises. This information can be used to assess the current economic development and for short-term forecasts. Indices do not measure the actual production level, it aims to measure the average change in value of production between two points of time. Indices are compiled on the base of information collected through representative sampling survey on industrial enterprises. The sample covers enterprises with annual turnover more than 97% of total turnover in industry.

Industrial production indices are calculated at constant base year that is to say they are weighted with the structure of the value added at factor costs in the base year.

³ Seasonal adjustment is a statistical method, which eliminates the seasonal component of time series.

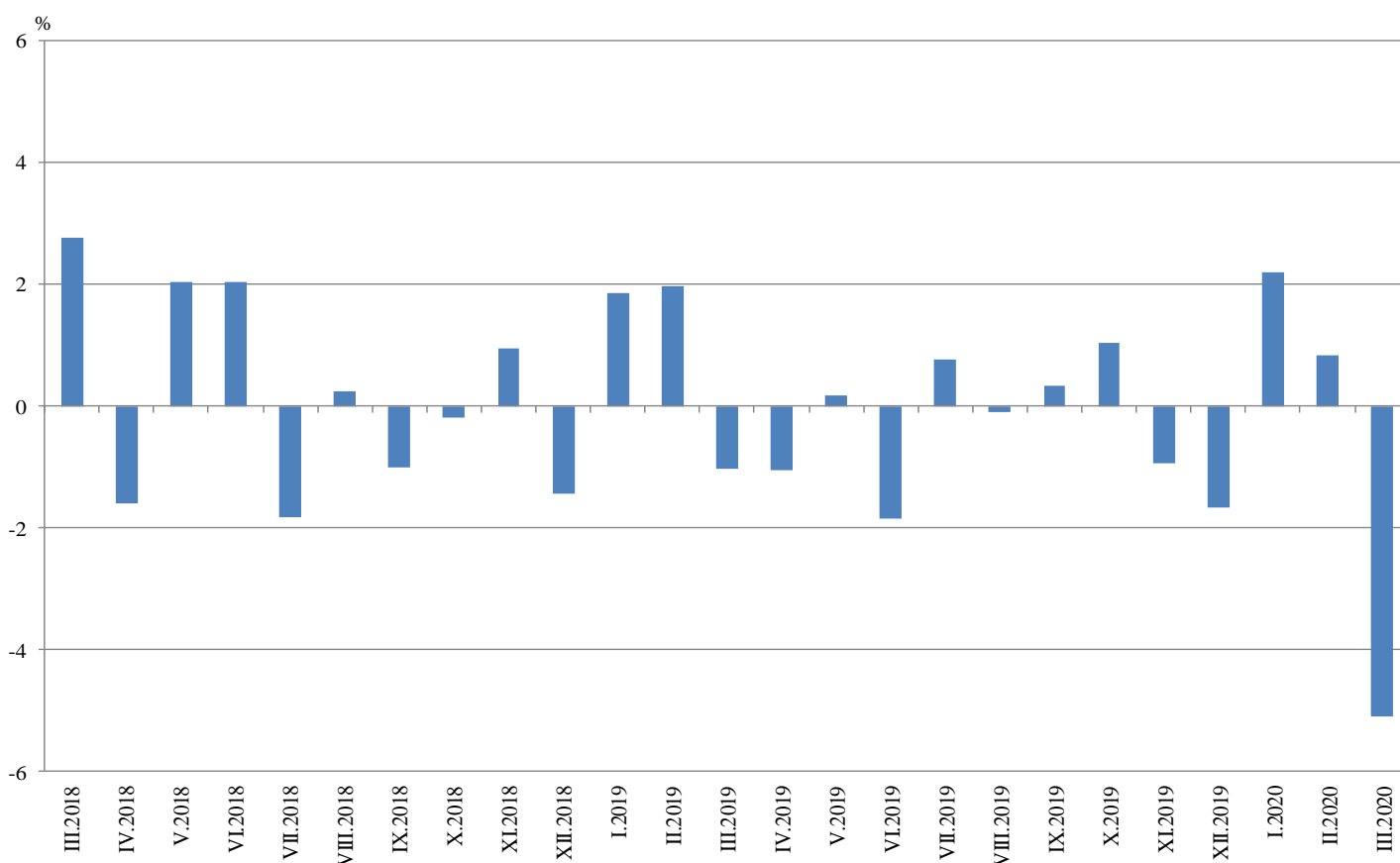
⁴ Working day adjustment is an adjustment for variations caused by calendar effects, different number of calendar and working days in the months, national holidays and outliers (for example the presence of more non-working days in May could contribute to the decline in the production in some activities).

Monthly changes

In March 2020 as compared to February 2020, the seasonally adjusted Industrial Production Index went down in the manufacturing by 6.9%, while the production rose in the electricity, gas, steam and air conditioning supply by 5.6% and in the mining and quarrying industry by 1.0%.

The most significant production decreases in the manufacturing were registered in the other manufacturing by 59.8%, in the manufacture of furniture by 25.0%, in the manufacture of motor vehicles, trailers and semi-trailers by 21.8%, in the manufacture of leather and related products by 18.5%. Important increases were seen in the manufacture of basic pharmaceutical products and pharmaceutical preparations by 14.4%, in the repair and installation of machinery and equipment by 9.9%.

**Figure 2. Changes of Industrial Production Indices compared to the previous month
(Seasonally adjusted)**

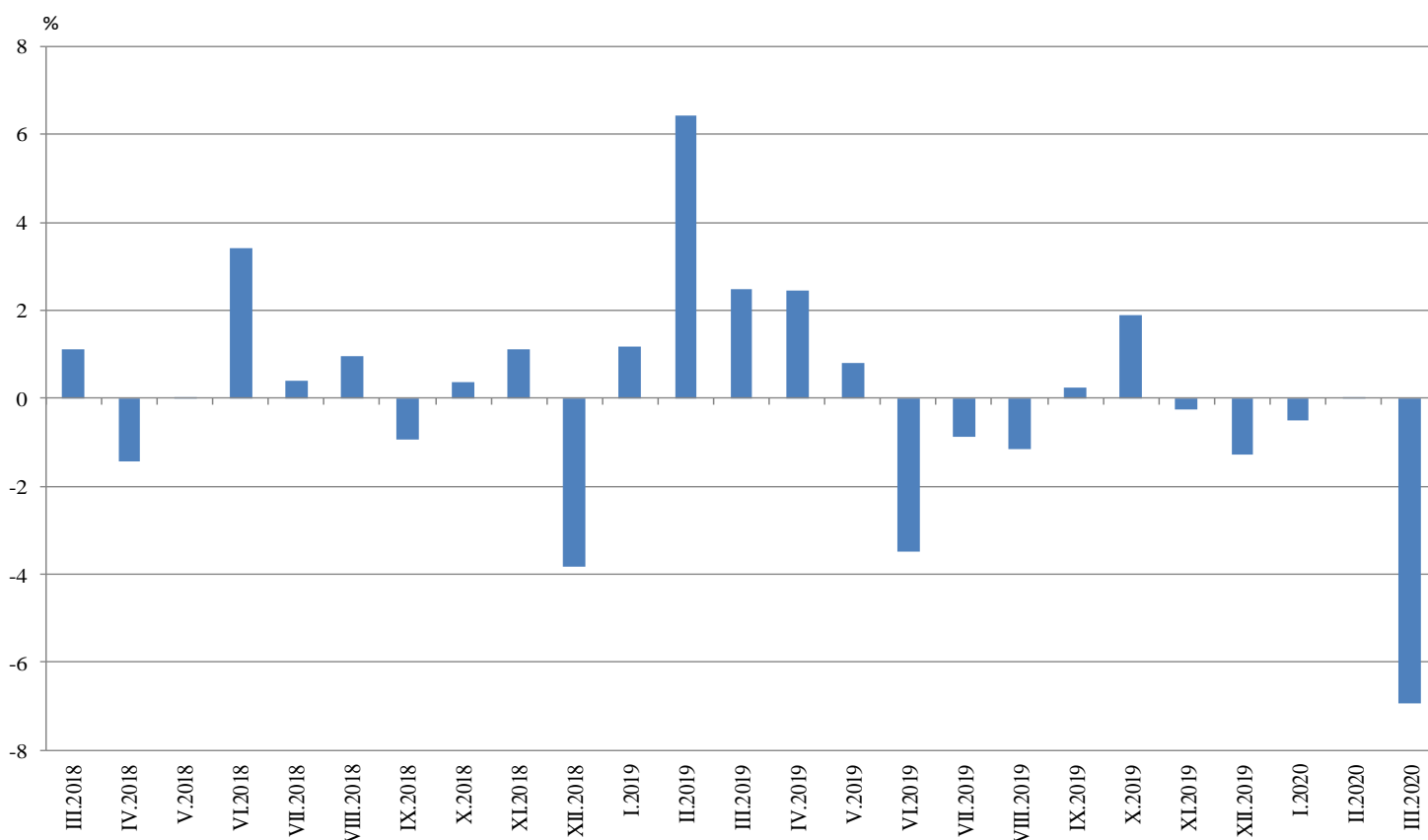


Annual changes

On annual basis in March 2020 Industrial Production Index calculated from working day adjusted data fell in the manufacturing by 9.8% and in the electricity, gas, steam and air conditioning supply by 0.4%, while the production went up in the mining and quarrying industry by 12.3%.

In the manufacturing, the more considerable decreases compared to the same month of the previous year were registered in the other manufacturing by 46.4%, in the manufacture of leather and related products by 31.0%, in the manufacture of wearing apparel by 26.0%, in the manufacture of furniture by 24.9%. Major increases were seen in the repair and installation of machinery and equipment by 12.2%, in the manufacture of food products by 8.3%, in the manufacture of basic pharmaceutical products and pharmaceutical preparations by 4.8%.

Figure 3. Changes of Industrial Production Indices compared to the same month of the previous year (Working day adjusted)



Annex

Changes of Industrial Production Indices compared to the previous month¹

Table 1

(Per cent)

Economic activities	NACE.BG - 2008	2019			2020		
		X	XI	XII	I	II	III*
Industry	B_TO_E36	1.0	-0.9	-1.7	2.2	0.8	-5.1
Mining and quarrying	B	0.9	-3.8	4.0	-3.0	7.0	1.0
Mining of coal and lignite	B05	-10.0	-8.4	4.2	-11.5	28.8	-1.4
Extraction of crude petroleum and natural gas	B06
Mining of metal ores	B07	14.8	-6.6	6.8	-11.0	0.8	8.4
Other mining and quarrying	B08	-1.1	3.2	-7.0	29.5	-17.9	3.8
Mining support service activities	B09
Manufacturing	C	1.8	-0.1	-2.1	4.2	-1.4	-6.9
Manufacture of food products	C10	5.7	-3.7	0.4	9.3	-3.6	0.1
Manufacture of beverages	C11	2.7	-4.2	-4.4	19.5	-5.8	-12.4
Manufacture of tobacco products	C12	-3.2	4.0	-11.0	-10.3	0.1	2.8
Manufacture of textiles	C13	-2.5	1.1	-1.3	13.0	-7.4	-12.2
Manufacture of wearing apparel	C14	-1.3	-1.0	-3.8	1.2	-0.6	-13.9
Manufacture of leather and related products	C15	3.8	10.2	-14.2	3.4	-6.5	-18.5
Manufacture of wood and of products of wood and cork, except furniture; manufacture of articles of straw and plaiting materials	C16	-1.0	0.4	6.5	2.5	-7.8	-11.2
Manufacture of paper and paper products	C17	2.3	-1.9	0.4	-1.6	3.9	-0.1
Printing and reproduction of recorded media	C18	0.9	8.7	-14.5	5.8	1.4	-10.7
Manufacture of coke and refined petroleum products	C19
Manufacture of chemicals and chemical products	C20	3.2	-4.9	6.0	-0.4	4.7	-1.8
Manufacture of basic pharmaceutical products and pharmaceutical preparations	C21	2.1	10.5	-11.7	6.6	-6.8	14.4
Manufacture of rubber and plastic products	C22	3.0	2.9	-1.3	0.2	0.9	-3.8
Manufacture of other non-metallic mineral products	C23	2.0	2.6	6.3	0.4	-3.6	-7.6
Manufacture of basic metals	C24	3.4	-0.1	0.5	1.3	-0.3	-1.1
Manufacture of fabricated metal products, except machinery and equipment	C25	0.4	-0.5	-13.3	23.8	9.6	-14.1
Manufacture of computer, electronic and optical products	C26	-0.6	1.6	10.7	-11.9	4.3	-15.0
Manufacture of electrical equipment	C27	-3.8	5.1	-4.9	3.9	5.1	-7.4
Manufacture of machinery and equipment n.e.c.	C28	3.3	-4.7	-6.5	7.9	-2.7	-10.3
Manufacture of motor vehicles, trailers and semi-trailers	C29	-0.6	-0.6	-14.4	19.5	-0.8	-21.8
Manufacture of other transport equipment	C30	5.9	7.6	-3.2	5.9	3.7	-12.3
Manufacture of furniture	C31	1.1	1.6	-3.9	7.3	-0.3	-25.0
Other manufacturing	C32	17.7	16.0	-2.1	-2.7	14.1	-59.8
Repair and installation of machinery and equipment	C33	1.5	-11.4	-4.7	29.5	-9.1	9.9
Electricity, gas, steam and air conditioning supply	D	-4.6	-1.0	0.9	0.4	0.2	5.6
Electricity, gas, steam and air conditioning supply	D35	-4.6	-1.0	0.9	0.4	0.2	5.6

¹ Seasonally adjusted.

* Preliminary data.

„..“ - Confidential data.

Table 2

Changes of Industrial Production Indices compared to the same month of the previous year¹
(Per cent)

Economic activities	NACE.BG - 2008	2019			2020		
		X	XI	XII	I	II	III*
Industry	B_TO_E36	1.9	-0.3	-1.3	-0.5	0.0	-6.9
Mining and quarrying	B	9.9	1.9	4.4	-11.3	-1.1	12.3
Mining of coal and lignite	B05	-10.5	-14.7	-19.3	-36.7	-12.4	-7.4
Extraction of crude petroleum and natural gas	B06
Mining of metal ores	B07	29.3	10.8	22.2	3.8	6.2	27.4
Other mining and quarrying	B08	9.7	13.8	11.0	14.4	-10.3	-2.2
Mining support service activities	B09
Manufacturing	C	2.4	1.6	0.0	2.5	1.8	-9.8
Manufacture of food products	C10	12.9	8.2	4.9	5.7	5.2	8.3
Manufacture of beverages	C11	5.7	-4.8	-4.5	19.3	7.4	-11.2
Manufacture of tobacco products	C12	-28.1	-14.9	-32.3	31.4	13.6	-7.4
Manufacture of textiles	C13	0.4	1.8	-3.5	9.6	11.0	-5.7
Manufacture of wearing apparel	C14	-2.4	-8.1	-5.8	-9.5	-5.4	-26.0
Manufacture of leather and related products	C15	-0.6	14.3	-1.6	0.2	-10.2	-31.0
Manufacture of wood and of products of wood and cork, except furniture; manufacture of articles of straw and plaiting materials	C16	2.5	3.9	7.8	8.3	-1.5	-14.3
Manufacture of paper and paper products	C17	-8.3	-4.9	-1.8	-8.7	1.9	-2.7
Printing and reproduction of recorded media	C18	5.7	21.3	1.0	-0.6	-5.5	-17.1
Manufacture of coke and refined petroleum products	C19
Manufacture of chemicals and chemical products	C20	-5.9	6.6	3.4	-0.5	4.0	-0.4
Manufacture of basic pharmaceutical products and pharmaceutical preparations	C21	-7.0	3.2	-17.1	-0.1	-10.5	4.8
Manufacture of rubber and plastic products	C22	2.3	3.2	-0.3	0.8	0.9	-6.2
Manufacture of other non-metallic mineral products	C23	-0.5	1.5	8.9	1.5	1.6	-13.4
Manufacture of basic metals	C24	18.6	1.0	-12.1	9.4	1.5	-6.1
Manufacture of fabricated metal products, except machinery and equipment	C25	-1.1	-6.3	-0.3	4.0	3.5	-6.6
Manufacture of computer, electronic and optical products	C26	4.8	13.4	31.3	8.1	5.0	-7.4
Manufacture of electrical equipment	C27	-1.5	3.0	-1.2	-1.2	4.9	-5.1
Manufacture of machinery and equipment n.e.c.	C28	-2.0	-7.4	-13.9	-8.7	-7.1	-21.1
Manufacture of motor vehicles, trailers and semi-trailers	C29	3.2	-1.1	10.3	13.3	4.8	-17.5
Manufacture of other transport equipment	C30	5.9	15.0	40.9	24.1	15.5	0.2
Manufacture of furniture	C31	-6.1	-4.7	-7.3	0.0	-0.9	-24.9
Other manufacturing	C32	35.4	32.9	26.3	6.7	24.8	-46.4
Repair and installation of machinery and equipment	C33	2.0	-7.3	-17.1	1.9	-12.7	12.2
Electricity, gas, steam and air conditioning supply	D	-6.0	-10.3	-9.0	-7.5	-7.4	-0.4
Electricity, gas, steam and air conditioning supply	D35	-6.0	-10.3	-9.0	-7.5	-7.4	-0.4

¹ Working day adjusted.

* Preliminary data.

„..“ - Confidential data.

Table 3

Industrial Production Indices
(Seasonally adjusted, 2015 = 100)

NACE.BG - 2008	2019										2020		
	III	IV	V	VI	VII	VIII	IX	X	XI	XII	I	II	III*
B_TO_E36	109.1	107.9	108.1	106.1	106.9	106.8	107.2	108.3	107.3	105.5	107.8	108.7	103.2
B	100.7	97.3	107.9	95.0	102.3	95.6	106.1	107.0	102.9	107.0	103.8	111.1	112.2
B05	90.2	78.2	93.3	75.4	78.3	76.9	87.1	78.4	71.8	74.8	66.2	85.3	84.1
B06
B07	109.5	116.4	121.5	117.4	125.8	106.9	125.4	144.0	134.4	143.5	127.7	128.7	139.4
B08	113.5	98.0	103.1	94.2	101.6	100.7	106.2	105.0	108.4	100.8	130.5	107.2	111.2
B09
C	116.7	114.8	114.4	113.2	113.0	113.9	113.9	116.0	115.8	113.3	118.1	116.5	108.4
C10	107.1	107.4	109.9	106.3	107.3	110.1	107.7	113.8	109.5	110.0	120.2	115.9	116.0
C11	105.8	102.3	102.4	104.6	101.9	107.2	105.5	108.3	103.8	99.2	118.6	111.7	97.8
C12	39.1	45.3	52.0	38.9	51.0	41.7	48.8	47.3	49.2	43.7	39.2	39.2	40.3
C13	93.5	85.9	89.2	99.4	93.1	92.5	100.8	98.3	99.4	98.1	110.8	102.6	90.1
C14	88.8	85.1	84.6	82.5	83.9	81.6	84.1	83.0	82.2	79.1	80.0	79.6	68.5
C15	95.8	96.2	106.8	93.3	89.1	84.6	91.4	94.9	104.6	89.8	92.8	86.8	70.7
C16	80.6	75.9	79.5	72.1	76.5	73.3	79.3	78.5	78.8	83.9	86.0	79.3	70.4
C17	102.0	100.9	102.7	97.4	99.6	96.8	95.9	98.1	96.2	96.6	95.1	98.9	98.8
C18	119.0	122.4	128.1	120.1	119.8	113.8	112.8	113.9	123.8	105.9	111.9	113.5	101.4
C19
C20	122.7	114.3	121.9	115.5	117.0	109.9	114.3	118.0	112.3	119.0	118.6	124.2	122.0
C21	120.3	115.5	117.1	118.5	124.6	111.8	108.1	110.4	122.0	107.7	114.8	107.0	122.3
C22	142.8	136.9	134.8	134.0	133.1	133.7	133.0	136.9	140.9	139.1	139.4	140.7	135.3
C23	119.0	107.8	109.0	108.3	108.9	108.4	110.2	112.4	115.2	122.5	123.0	118.5	109.5
C24	110.9	104.6	99.4	98.5	102.8	106.5	108.0	111.6	111.5	112.1	113.5	113.2	112.0
C25	126.0	116.1	116.3	123.4	115.0	128.2	117.2	117.7	117.2	101.6	125.8	137.9	118.4
C26	144.8	150.7	144.7	158.7	154.1	167.8	158.7	157.8	160.4	177.6	156.5	163.3	138.7
C27	127.5	131.7	127.2	124.8	123.3	128.3	126.4	121.6	127.8	121.5	126.2	132.6	122.8
C28	125.1	126.1	123.5	120.5	117.6	112.3	117.2	121.1	115.4	107.8	116.4	113.3	101.6
C29	146.2	149.4	151.4	143.9	146.5	148.8	151.5	150.6	149.6	128.0	152.9	151.7	118.6
C30	165.1	158.4	154.8	142.7	159.9	168.5	157.9	167.2	179.9	174.1	184.5	191.3	167.7
C31	105.3	97.9	104.4	106.1	106.2	102.4	99.8	101.0	102.5	98.5	105.7	105.4	79.0
C32	150.6	136.1	148.3	153.0	168.6	121.7	135.0	158.9	184.4	180.5	175.7	200.4	80.5
C33	126.8	138.5	126.7	138.0	120.4	126.8	126.9	128.9	114.2	108.8	140.9	128.1	140.8
D	84.0	81.9	82.3	81.5	82.9	82.3	81.5	77.8	76.9	77.6	77.9	78.1	82.5
35	84.0	81.9	82.3	81.5	82.9	82.3	81.5	77.8	76.9	77.6	77.9	78.1	82.5

* Preliminary data.

...“ - Confidential data.

Table 4

Industrial Production Indices
(Working day adjusted, 2015 = 100)

NACE.BG - 2008	2017	2018	2019										2020		
	III	III	III	IV	V	VI	VII	VIII	IX	X	XI	XII	I	II	III*
B_TO_E36	108.7	109.9	112.6	103.1	104.7	108.3	110.2	102.8	106.2	112.1	114.0	107.9	103.1	105.2	104.8
B	101.0	92.0	95.3	89.6	101.3	91.3	100.6	93.0	110.3	121.3	111.5	116.5	102.6	105.5	107.0
B05	87.3	82.2	79.6	57.6	78.5	56.9	70.7	72.6	92.6	100.7	85.0	93.6	81.7	87.8	73.6
B06
B07	115.5	108.3	109.5	116.4	121.5	117.4	125.8	106.9	125.4	144.0	134.4	143.5	127.7	128.7	139.4
B08	72.5	83.5	103.8	98.1	108.2	102.8	109.8	107.8	117.3	119.6	120.6	99.7	86.6	82.2	101.6
B09
C	112.7	114.0	120.3	112.3	114.4	119.8	119.3	109.9	114.4	122.1	123.2	109.7	104.9	110.7	108.5
C10	101.0	109.3	105.4	102.6	108.2	109.2	108.7	113.3	115.1	125.2	116.8	114.7	103.1	100.5	114.2
C11	95.4	93.9	100.9	102.5	111.0	128.2	125.6	135.0	117.0	98.1	92.2	96.8	75.7	81.0	89.6
C12	82.2	59.9	40.5	47.4	67.6	41.3	56.9	35.0	48.7	57.0	56.0	43.0	25.3	24.8	37.5
C13	112.2	113.8	105.4	91.8	99.0	110.6	97.2	73.1	97.1	101.2	104.1	85.3	96.7	100.7	99.3
C14	102.4	93.8	89.0	77.2	76.7	88.7	97.5	79.0	83.1	82.9	83.8	76.2	82.6	79.9	65.9
C15	101.6	101.6	99.1	88.4	97.0	98.1	102.6	75.1	95.4	99.9	111.2	79.5	92.7	86.6	68.4
C16	88.0	77.7	79.9	75.0	80.3	76.9	82.2	72.4	83.0	86.2	85.0	79.3	70.5	70.4	68.5
C17	108.6	103.9	104.2	99.4	106.3	100.1	101.8	94.7	94.5	102.8	96.3	92.0	93.6	96.3	101.3
C18	110.6	104.7	121.5	120.1	129.4	123.5	119.6	106.2	109.7	121.0	140.7	109.9	98.9	105.9	100.7
C19
C20	124.0	119.2	132.6	117.3	122.2	119.6	119.9	106.0	114.2	119.8	113.9	116.2	109.7	116.5	132.1
C21	110.8	117.2	127.7	110.1	114.0	124.4	127.2	99.5	107.4	108.1	134.4	109.5	111.5	99.2	133.8
C22	125.0	128.1	148.8	137.0	137.0	142.9	141.3	126.4	135.2	151.0	149.5	120.3	123.5	131.0	139.6
C23	101.7	100.6	120.5	109.1	118.0	118.0	117.1	113.4	118.1	125.8	122.9	110.3	87.5	96.8	104.4
C24	127.3	120.5	121.3	107.3	92.5	89.8	116.1	99.3	96.4	123.4	121.0	100.0	119.2	112.1	113.8
C25	136.3	137.4	128.0	113.5	111.3	132.9	123.8	128.2	120.1	120.3	128.8	113.2	92.1	125.6	119.5
C26	147.1	160.4	154.4	148.4	139.7	168.4	157.6	150.3	154.6	165.5	168.7	189.6	143.3	153.7	142.9
C27	107.5	118.5	134.1	131.5	127.0	132.0	126.0	115.9	128.7	132.5	141.6	106.4	115.5	130.2	127.3
C28	120.3	121.9	133.2	129.2	124.3	129.1	122.9	97.3	115.5	127.3	124.3	102.0	105.1	109.7	105.2
C29	128.6	141.2	157.5	153.2	155.6	145.5	140.4	123.8	151.8	158.3	156.7	114.2	157.0	155.4	130.0
C30	100.9	149.5	193.5	166.1	168.6	142.4	146.9	135.9	133.7	163.0	190.8	153.3	182.2	204.9	193.8
C31	107.3	113.9	106.0	94.3	105.0	109.0	110.3	100.4	102.2	108.8	112.4	99.2	91.3	95.8	79.7
C32	136.9	132.8	153.6	131.4	146.8	174.4	167.4	118.0	137.3	173.6	199.7	163.3	161.3	182.7	82.4
C33	92.7	120.2	123.9	125.0	119.4	142.9	122.6	124.4	133.1	133.5	128.1	146.1	102.2	109.1	139.1
D	99.8	102.5	92.1	73.1	67.9	71.0	77.2	76.4	71.7	70.0	81.0	97.1	97.7	85.0	91.7
D35	99.8	102.5	92.1	73.1	67.9	71.0	77.2	76.4	71.7	70.0	81.0	97.1	97.7	85.0	91.7

* Preliminary data.

„..“ - Confidential data.