

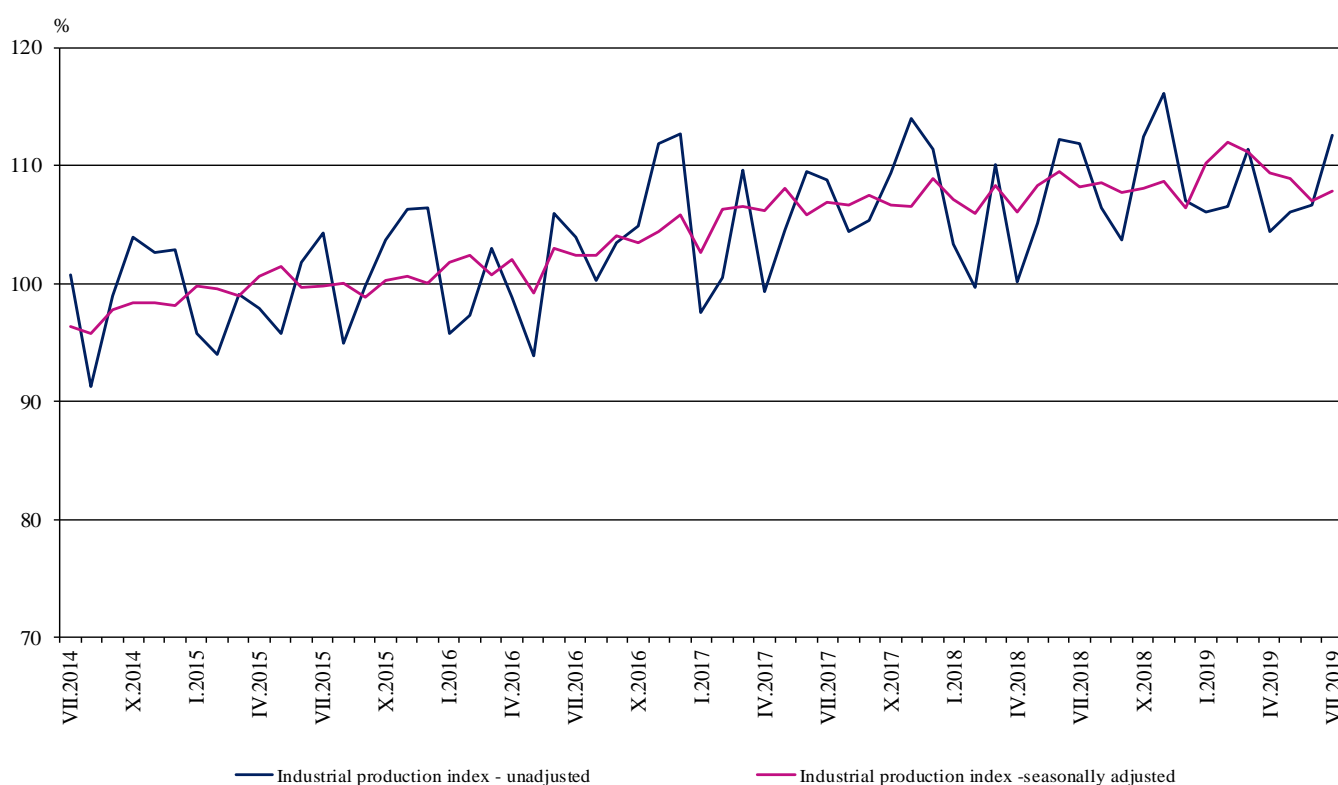


INDUSTRIAL PRODUCTION INDICES IN JULY 2019¹

According to the preliminary data in July 2019 the Industrial Production Index², seasonally adjusted³, rose by 0.8% as compared to June 2019.

In July 2019 the working day adjusted⁴ Industrial Production Index fell by 0.9% in comparison with the same month of 2018.

Figure 1. Industrial Production Indices (2015 = 100)



¹ July 2019 data are preliminary. The final data on Industrial Production and Turnover Indices for June 2019 can be found on the NSI website: <http://www.nsi.bg/en>.

² Monthly Industrial Production and Industrial turnover indices measure changes in production and turnover values of industrial enterprises. This information can be used to assess the current economic development and for short-term forecasts. Indices do not measure the actual production level, it aims to measure the average change in value of production between two points of time. Indices are compiled on the base of information collected through representative sampling survey on industrial enterprises. The sample covers enterprises with annual turnover more than 97% of total turnover in industry.

Industrial production indices are calculated at constant base year that is to say they are weighted with the structure of the value added at factor costs in the base year.

³ Seasonal adjustment is a statistical method, which eliminates the seasonal component of time series.

⁴ Working day adjustment is an adjustment for variations caused by calendar effects, different number of calendar and working days in the months, national holidays and outliers (for example the presence of more non-working days in May could contribute to the decline in the production in some activities).

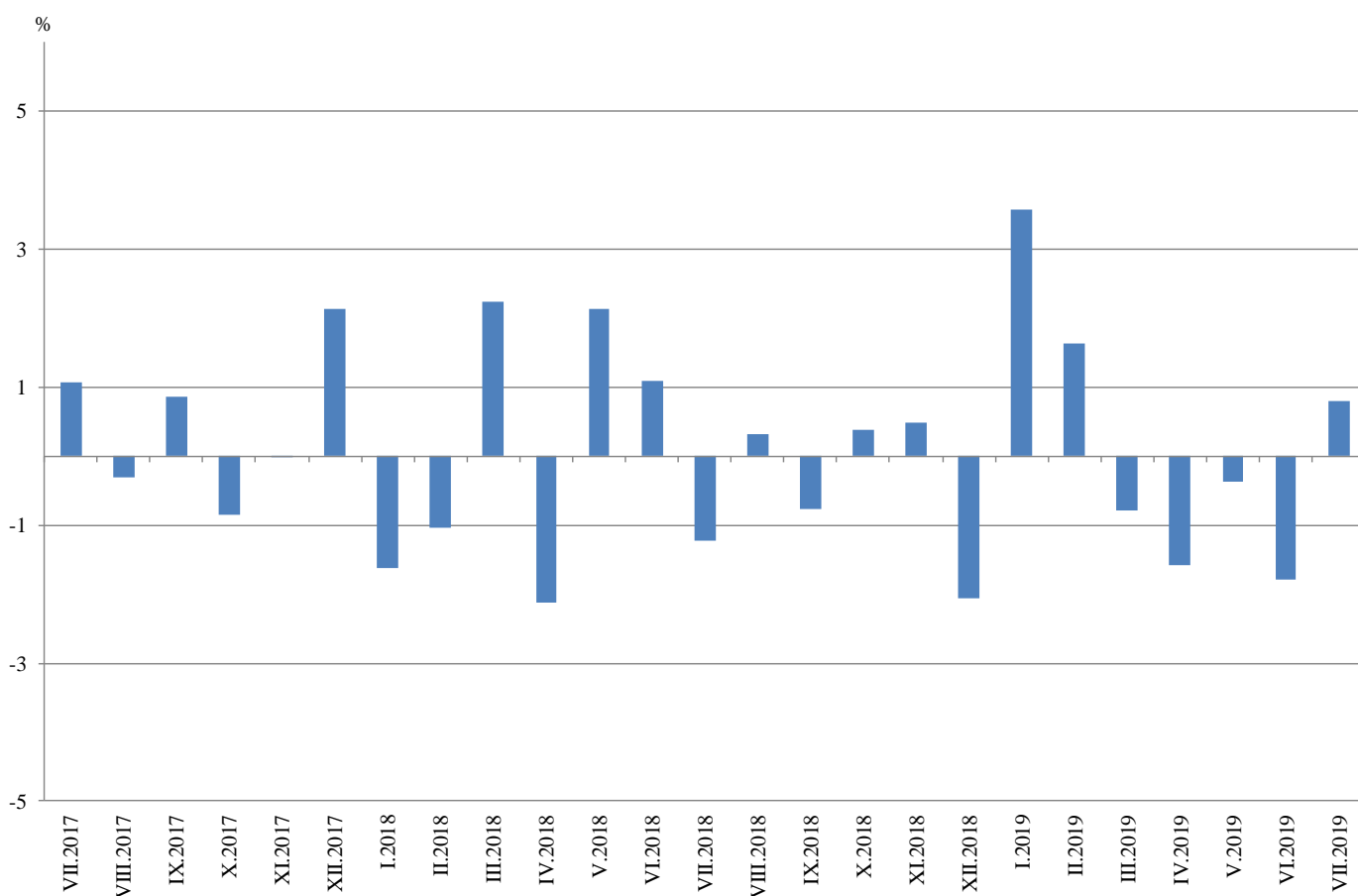


Monthly changes

In July 2019 as compared to June 2019, the seasonally adjusted Industrial Production Index increased in the mining and quarrying industry by 6.9% and in the electricity, gas, steam and air conditioning supply by 1.4%, while the production went down in the manufacturing by 0.1%.

The most significant production decreases in the manufacturing were registered in the repair and installation of machinery and equipment by 12.5%, in the manufacture of textiles by 6.6%, in the manufacture of leather and related products by 5.4%. Major increases were seen in the manufacture of tobacco products by 39.8%, in the other manufacturing by 11.9%, in the manufacture of other transport equipment by 11.2%, in the manufacture of basic pharmaceutical products and pharmaceutical preparations by 7.1%.

**Figure 2. Changes of Industrial Production Indices compared to the previous month
(Seasonally adjusted)**



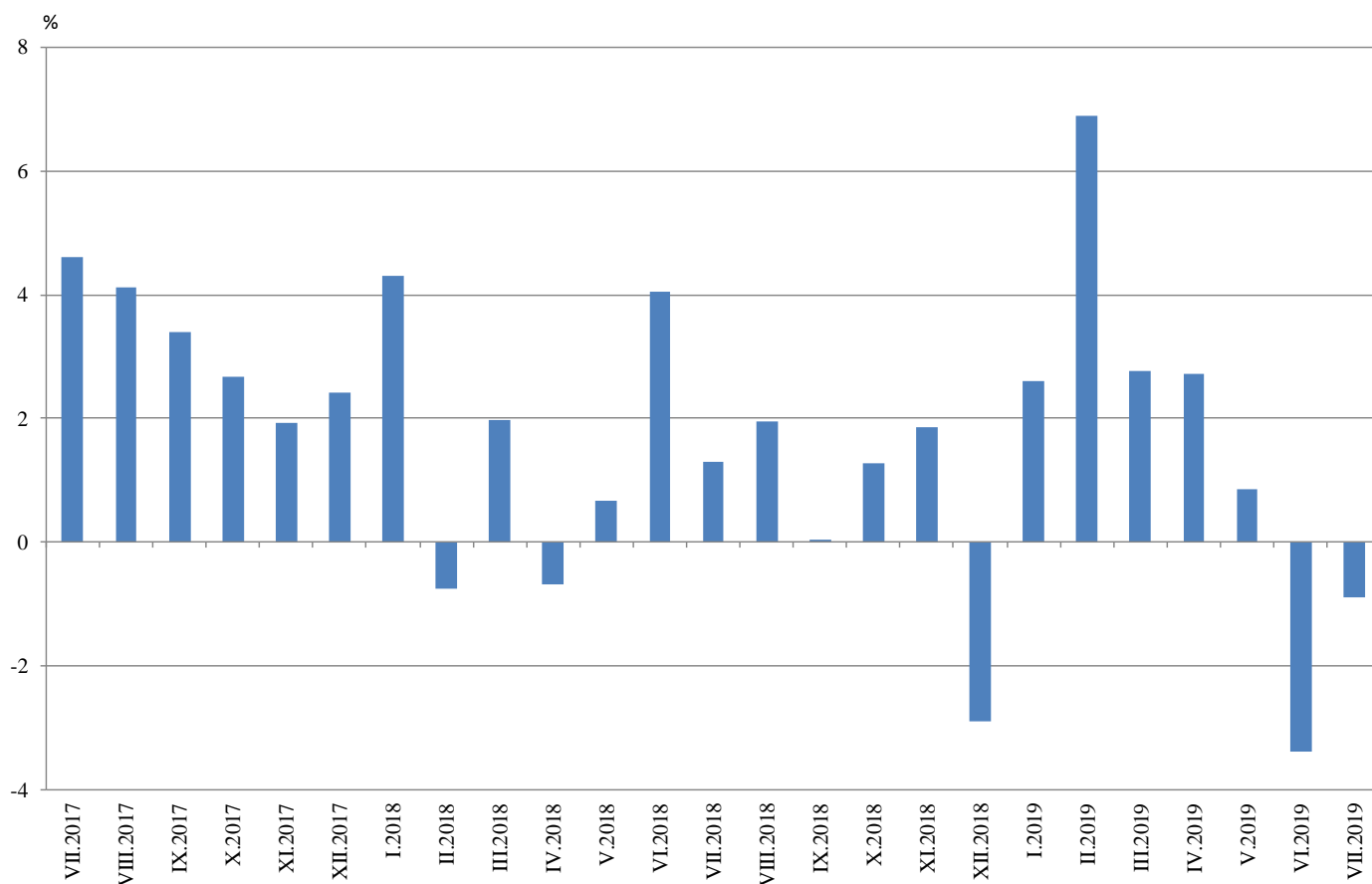


Annual changes

On annual basis in July 2019 Industrial Production Index calculated from working day adjusted data fell in the electricity, gas, steam and air conditioning supply by 2.4% and in the manufacturing by 1.1%, while the production rose in the mining and quarrying industry by 4.4%.

In the manufacturing, the more considerable decreases compared to the same month of the previous year were registered in the manufacture of fabricated metal products, except machinery and equipment by 19.2%, in the manufacture of wearing apparel by 8.4%, in the manufacture of textiles by 6.9%, in the manufacture of basic metals by 5.1%. Important increases were seen in the other manufacturing by 29.5%, in the manufacture of other transport equipment by 25.8%, in the printing and reproduction of recorded media by 18.3%, in the manufacture of basic pharmaceutical products and pharmaceutical preparations by 13.4%.

Figure 3. Changes of Industrial Production Indices compared to the same month of the previous year (Working day adjusted)



Annex

Table 1
Changes of Industrial Production Indices compared to the previous month¹
(Per cent)

Economic activities	NACE.BG - 2008	2019					
		II	III	IV	V	VI	VII
Industry	B_TO_E36	1.6	-0.8	-1.6	-0.4	-1.8	0.8
Mining and quarrying	B	-4.9	-9.9	-3.0	9.2	-12.3	6.9
Mining of coal and lignite	B05	-12.5	-7.9	-12.9	19.2	-19.8	5.0
Extraction of crude petroleum and natural gas	B06
Mining of metal ores	B07	-1.6	-9.9	6.5	3.0	-2.7	6.3
Other mining and quarrying	B08	-0.1	-6.4	-9.2	0.7	-10.1	11.9
Mining support service activities	B09
Manufacturing	C	2.2	-1.6	-1.9	-0.8	-1.2	-0.1
Manufacture of food products	C10	-6.3	-2.8	0.8	1.9	-3.0	1.2
Manufacture of beverages	C11	1.2	-4.2	-2.2	-0.1	2.0	-2.0
Manufacture of tobacco products	C12	-0.6	7.3	19.5	10.6	-33.4	39.8
Manufacture of textiles	C13	-13.5	-1.1	-9.3	4.0	11.5	-6.6
Manufacture of wearing apparel	C14	-1.8	2.7	-4.6	-0.4	-2.4	2.1
Manufacture of leather and related products	C15	5.4	-0.7	-3.1	17.4	-14.8	-5.4
Manufacture of wood and of products of wood and cork, except furniture; manufacture of articles of straw and plaiting materials	C16	1.1	0.2	-6.3	4.0	-8.8	5.4
Manufacture of paper and paper products	C17	-5.7	-0.2	1.0	1.4	-5.0	2.4
Printing and reproduction of recorded media	C18	8.9	-0.9	3.7	5.3	-6.7	0.1
Manufacture of coke and refined petroleum products	C19
Manufacture of chemicals and chemical products	C20	0.4	3.0	-6.3	5.9	-5.1	1.9
Manufacture of basic pharmaceutical products and pharmaceutical preparations	C21	-0.1	3.1	-2.4	1.7	0.5	7.1
Manufacture of rubber and plastic products	C22	2.5	0.8	-4.2	-2.3	-0.6	-1.3
Manufacture of other non-metallic mineral products	C23	-1.0	-0.4	-9.3	0.1	-0.3	1.2
Manufacture of basic metals	C24	0.4	-2.8	-5.4	-7.7	-1.1	3.5
Manufacture of fabricated metal products, except machinery and equipment	C25	17.6	-13.7	-4.3	-1.1	3.3	-1.3
Manufacture of computer, electronic and optical products	C26	7.3	-6.3	3.7	-4.2	10.1	-3.0
Manufacture of electrical equipment	C27	2.9	-1.5	3.2	-3.5	-2.2	-1.2
Manufacture of machinery and equipment n.e.c.	C28	-3.9	2.1	1.2	-2.2	-2.9	-1.9
Manufacture of motor vehicles, trailers and semi-trailers	C29	4.1	-0.3	3.5	-0.5	-6.1	2.6
Manufacture of other transport equipment	C30	9.1	-3.3	-4.0	-3.5	-7.8	11.2
Manufacture of furniture	C31	1.9	-2.7	-6.8	7.1	1.6	0.2
Other manufacturing	C32	1.1	-6.4	-10.4	9.5	3.5	11.9
Repair and installation of machinery and equipment	C33	3.0	-13.6	9.0	-8.5	8.8	-12.5
Electricity, gas, steam and air conditioning supply	D	-1.5	1.1	-3.2	1.4	-1.7	1.4
Electricity, gas, steam and air conditioning supply	D35	-1.5	1.1	-3.2	1.4	-1.7	1.4

¹ Seasonally adjusted.
,,...“ - Confidential data.



Table 2
Changes of Industrial Production Indices compared to the same month of the previous year¹
(Per cent)

Economic activities	NACE.BG - 2008	2019					
		II	III	IV	V	VI	VII
Industry	B_TO_E36	6.9	2.8	2.7	0.9	-3.4	-0.9
Mining and quarrying	B	16.0	2.0	-1.4	9.8	-19.8	4.4
Mining of coal and lignite	B05	34.1	-2.7	6.1	11.5	-33.5	-5.8
Extraction of crude petroleum and natural gas	B06
Mining of metal ores	B07	4.0	-2.3	-7.1	10.7	-19.5	4.8
Other mining and quarrying	B08	15.2	22.0	-3.3	-0.1	-12.9	15.6
Mining support service activities	B09
Manufacturing	C	9.6	5.5	4.7	0.9	-1.5	-1.1
Manufacture of food products	C10	6.8	-4.1	4.4	3.1	2.7	3.5
Manufacture of beverages	C11	15.2	5.6	3.3	-3.4	0.6	4.3
Manufacture of tobacco products	C12	-42.5	-32.4	-14.7	-0.3	-47.9	-1.1
Manufacture of textiles	C13	-0.7	-6.0	-12.6	-6.9	7.2	-6.9
Manufacture of wearing apparel	C14	-7.9	-5.3	-6.6	-7.2	-10.6	-8.4
Manufacture of leather and related products	C15	-0.6	-6.3	-2.2	7.9	-9.2	-4.3
Manufacture of wood and of products of wood and cork, except furniture; manufacture of articles of straw and plaiting materials	C16	1.0	2.8	-8.5	-4.1	-9.3	-1.5
Manufacture of paper and paper products	C17	-2.2	0.0	1.2	1.0	-9.5	-4.5
Printing and reproduction of recorded media	C18	25.3	16.2	18.1	22.8	15.5	18.3
Manufacture of coke and refined petroleum products	C19
Manufacture of chemicals and chemical products	C20	7.9	11.0	3.4	6.9	-2.6	3.1
Manufacture of basic pharmaceutical products and pharmaceutical preparations	C21	8.3	6.5	5.7	6.3	4.5	13.4
Manufacture of rubber and plastic products	C22	13.7	15.6	10.8	0.3	1.0	-2.7
Manufacture of other non-metallic mineral products	C23	13.8	20.1	-1.7	0.6	0.0	4.3
Manufacture of basic metals	C24	4.8	0.3	-6.9	-16.8	-20.6	-5.1
Manufacture of fabricated metal products, except machinery and equipment	C25	13.1	-8.9	2.3	-13.9	-3.9	-19.2
Manufacture of computer, electronic and optical products	C26	11.5	-3.6	9.1	4.8	10.9	5.3
Manufacture of electrical equipment	C27	23.6	13.9	17.2	8.6	5.3	7.2
Manufacture of machinery and equipment n.e.c.	C28	5.8	9.0	6.1	8.2	2.7	1.0
Manufacture of motor vehicles, trailers and semi-trailers	C29	12.9	10.5	11.7	9.4	-3.2	5.1
Manufacture of other transport equipment	C30	40.3	29.2	23.5	20.2	-0.8	25.8
Manufacture of furniture	C31	-2.7	-6.1	-10.2	-8.2	-2.9	-2.7
Other manufacturing	C32	19.3	15.7	-10.1	8.2	8.9	29.5
Repair and installation of machinery and equipment	C33	24.7	3.1	14.3	5.6	3.6	-3.9
Electricity, gas, steam and air conditioning supply	D	-5.4	-7.6	-5.0	-3.5	-5.2	-2.4
Electricity, gas, steam and air conditioning supply	D35	-5.4	-7.6	-5.0	-3.5	-5.2	-2.4

¹ Working day adjusted.

„...“ - Confidential data.

Table 3

Industrial Production Indices
(Seasonally adjusted, 2015 = 100)

NACE.BG - 2008	2018						2019						
	VII	VIII	IX	X	XI	XII	I	II	III	IV	V	VI	VII
B_TO_E36	108.2	108.5	107.7	108.1	108.6	106.4	110.2	112.0	111.1	109.4	109.0	107.0	107.9
B	95.1	93.9	98.4	97.7	101.0	103.7	116.8	111.1	100.1	97.2	106.1	93.1	99.5
B05	82.4	79.6	71.1	90.7	86.4	97.5	113.0	98.9	91.2	79.4	94.7	76.0	79.8
B06
B07	114.6	105.4	124.3	111.4	121.3	117.4	119.3	117.4	105.9	112.8	116.1	113.0	120.1
B08	88.8	95.4	105.7	96.4	95.7	85.9	119.4	119.2	111.6	101.4	102.1	91.7	102.7
B09
C	113.1	114.2	113.0	113.6	114.2	111.6	116.9	119.5	117.6	115.4	114.5	113.1	113.0
C10	103.9	103.4	103.1	101.0	101.1	104.6	117.0	109.7	106.6	107.5	109.6	106.3	107.5
C11	97.2	101.5	106.2	103.7	107.9	100.0	108.3	109.6	104.9	102.6	102.6	104.6	102.5
C12	53.2	48.3	52.3	70.3	60.8	59.0	41.2	40.9	43.9	52.5	58.0	38.6	54.0
C13	100.3	102.2	96.5	99.1	99.4	103.7	110.7	95.8	94.7	85.9	89.3	99.7	93.0
C14	92.0	91.9	89.5	85.6	90.2	82.9	88.0	86.4	88.8	84.7	84.4	82.3	84.1
C15	92.6	88.6	88.6	95.1	97.3	86.7	92.4	97.4	96.7	93.8	110.1	93.7	88.7
C16	76.8	75.2	79.1	76.3	75.7	78.5	79.7	80.7	80.8	75.8	78.8	71.9	75.8
C17	104.6	101.0	101.7	108.1	100.5	100.3	106.8	100.8	100.6	101.6	103.1	97.9	100.3
C18	102.0	106.4	102.7	106.2	102.9	101.3	110.1	119.9	118.7	123.1	129.6	120.9	121.1
C19
C20	113.8	118.7	110.2	125.1	105.1	115.5	118.7	119.2	122.8	115.0	121.8	115.5	117.7
C21	115.6	114.2	128.7	115.8	121.8	124.9	115.4	115.3	118.9	116.0	118.0	118.6	127.0
C22	133.7	126.1	131.5	133.6	138.4	140.6	139.1	142.6	143.7	137.6	134.5	133.7	132.0
C23	105.2	106.9	106.1	111.3	112.4	115.2	121.1	119.9	119.5	108.4	108.5	108.2	109.5
C24	114.6	114.8	109.4	107.4	111.0	117.2	114.7	115.2	112.0	105.9	97.7	96.6	100.0
C25	145.9	133.8	110.6	121.3	126.6	94.0	120.9	142.1	122.6	117.3	116.0	119.8	118.2
C26	145.8	148.8	153.9	149.6	141.0	138.8	143.8	154.2	144.6	150.0	143.7	158.2	153.5
C27	113.7	126.9	120.2	121.1	125.2	120.6	127.6	131.3	129.4	133.5	128.8	125.9	124.3
C28	115.9	116.9	121.3	125.4	124.6	122.4	128.3	123.2	125.8	127.3	124.5	120.9	118.6
C29	138.2	138.9	142.4	144.3	148.6	111.8	141.7	147.6	147.2	152.3	151.5	142.3	146.0
C30	124.5	115.5	123.3	158.2	160.4	121.7	156.2	170.4	164.8	158.3	152.8	140.9	156.6
C31	111.1	105.3	108.8	107.1	107.8	105.3	107.0	109.0	106.1	98.9	105.9	107.6	107.8
C32	134.4	129.6	130.6	115.7	141.7	145.0	160.0	161.6	151.2	135.5	148.4	153.5	171.8
C33	124.3	141.1	131.7	126.0	121.0	129.6	143.5	147.8	127.8	139.3	127.4	138.6	121.2
D	91.0	92.2	90.5	87.8	90.1	90.6	91.3	89.9	91.0	88.1	89.3	87.8	89.0
35	91.0	92.2	90.5	87.8	90.1	90.6	91.3	89.9	91.0	88.1	89.3	87.8	89.0

...“ - Confidential data.

Table 4

**Industrial Production Indices
(Working day adjusted, 2015 = 100)**

NACE.BG - 2008	2016	2017	2018						2019						
	VII	VII	VII	VIII	IX	X	XI	XII	I	II	III	IV	V	VI	VII
B_TO_E36	105.8	110.7	112.1	105.0	107.0	111.0	115.1	110.3	105.1	106.6	113.9	104.1	105.5	109.1	111.1
B	99.2	103.0	93.9	92.1	101.9	110.4	109.4	111.6	114.1	104.8	93.9	88.5	99.4	89.4	98.1
B05	80.0	85.8	75.1	75.5	75.1	112.5	99.6	116.0	128.9	99.9	80.0	57.6	80.3	56.9	70.7
B06
B07	112.2	118.0	114.6	105.4	124.3	111.4	121.3	117.4	119.3	117.4	105.9	112.8	116.1	113.0	120.1
B08	103.9	85.6	96.6	103.8	116.3	110.7	107.2	86.5	76.1	91.3	101.0	101.1	107.6	100.0	111.7
B09
C	110.8	117.9	121.0	111.0	114.6	119.2	121.3	109.7	102.4	109.1	120.3	112.4	114.3	119.8	119.6
C10	104.9	108.6	105.4	106.4	110.7	110.9	108.0	109.2	99.2	94.9	104.8	102.7	107.9	109.2	109.1
C11	137.9	128.3	121.9	126.6	117.6	92.8	96.8	101.4	67.1	76.4	99.2	102.0	110.9	128.3	127.1
C12	97.4	66.4	57.5	46.5	51.0	79.3	65.9	63.4	19.0	18.5	40.5	47.4	67.6	41.3	56.9
C13	103.5	102.5	104.8	81.0	91.4	100.6	102.1	88.6	95.4	92.4	107.0	92.1	99.1	111.1	97.6
C14	121.9	110.8	106.6	89.7	87.4	84.9	91.1	80.8	91.3	84.4	88.9	76.7	76.9	88.4	97.6
C15	115.1	97.6	107.6	83.3	94.4	98.7	100.1	79.7	92.2	96.9	101.1	85.8	97.7	98.4	102.9
C16	96.6	91.9	83.0	75.4	83.0	84.1	81.9	73.5	64.2	70.5	79.8	74.6	79.7	76.9	81.8
C17	108.8	102.8	106.7	99.8	101.7	112.1	101.3	93.6	102.0	94.9	103.9	99.3	106.2	100.0	102.0
C18	102.7	105.7	101.2	100.0	101.2	114.3	116.0	109.2	98.9	111.8	121.8	120.0	129.9	123.5	119.8
C19
C20	114.3	128.2	116.9	115.6	110.2	127.3	106.8	112.3	109.8	111.1	132.3	117.6	121.8	119.4	120.5
C21	90.3	107.5	113.0	102.3	132.9	116.2	130.2	132.2	109.5	111.5	124.9	110.5	114.5	121.7	128.1
C22	118.3	123.8	144.0	121.1	136.0	147.6	144.9	120.7	122.7	129.8	148.1	137.0	136.0	142.7	140.1
C23	102.8	108.4	113.3	114.1	112.8	126.3	121.1	101.4	86.4	94.4	120.8	109.5	117.2	117.7	118.1
C24	117.3	111.6	122.3	110.7	104.7	104.1	119.9	113.7	107.6	110.3	120.9	106.9	92.2	89.5	116.1
C25	117.6	163.6	156.7	133.1	113.3	124.4	139.5	107.8	87.7	126.4	123.8	114.7	111.7	128.6	126.6
C26	110.9	130.8	149.7	131.2	149.6	157.8	148.7	144.6	133.6	144.5	154.7	148.4	138.8	168.6	157.7
C27	112.0	110.1	118.0	113.3	122.3	134.5	137.5	107.7	117.7	125.0	135.1	132.4	127.9	132.9	126.5
C28	111.6	125.0	121.9	103.5	119.8	130.0	134.2	118.3	114.8	117.7	132.9	129.2	124.4	128.8	123.1
C29	106.1	114.2	134.9	117.7	142.9	154.7	159.4	100.4	139.9	148.3	155.3	153.4	155.3	144.6	141.8
C30	87.1	86.9	115.7	89.4	106.1	153.9	165.9	108.8	147.1	177.6	193.2	167.0	168.4	142.1	145.5
C31	108.7	104.6	114.3	103.5	112.2	115.9	117.9	107.0	91.6	97.7	106.9	95.3	106.4	110.0	111.2
C32	106.4	114.1	132.0	132.0	137.5	128.2	150.2	129.3	142.5	142.4	153.6	130.9	147.2	174.4	170.9
C33	99.1	123.9	127.8	138.8	138.5	130.9	138.1	176.3	101.6	125.8	123.9	124.9	119.3	142.9	122.8
D	90.3	89.1	84.4	85.0	79.1	79.7	94.9	112.4	114.2	98.9	99.5	78.6	73.3	75.8	82.3
D35	90.3	89.1	84.4	85.0	79.1	79.7	94.9	112.4	114.2	98.9	99.5	78.6	73.3	75.8	82.3

„...“ - Confidential data.