



INDUSTRIAL PRODUCTION INDICES IN FEBRUARY 2018¹

In compliance with Regulation (EC) № 1165/98 and amendment Regulation (EC) № 1158/2005 since January 2018 the base year for Short-term business statistics has been changed. All short-term indicators presented in the form of indices are calculated and published at 2015 as a base year. The time series has been recalculated according to the new base year and they can be downloaded from INFOSTAT information system: https://infostat.nsi.bg/infostat/pages/module.jsf?x_2=188

According to the preliminary data the Industrial Production Index², seasonally adjusted³, decreased by 1.5% in February 2018 as compared to January 2018.

In February 2018 working day adjusted⁴ Industrial Production Index went down by 1.0% in comparison with the same month of 2017.

¹ February 2018 data are preliminary. The final data on Industrial Production and Turnover Indices for January 2018 can be found on the NSI website: <http://www.nsi.bg/en>.

² Monthly Industrial Production and Industrial turnover indices measure changes in production and turnover values of industrial enterprises. This information can be used to assess the current economic development and for short-term forecasts. Indices do not measure the actual production level, it aims to measure the average change in value of production between two points of time. Indices are compiled on the base of information collected through representative sampling survey on industrial enterprises. The sample covers enterprises with annual turnover more than 97% of total turnover in industry.

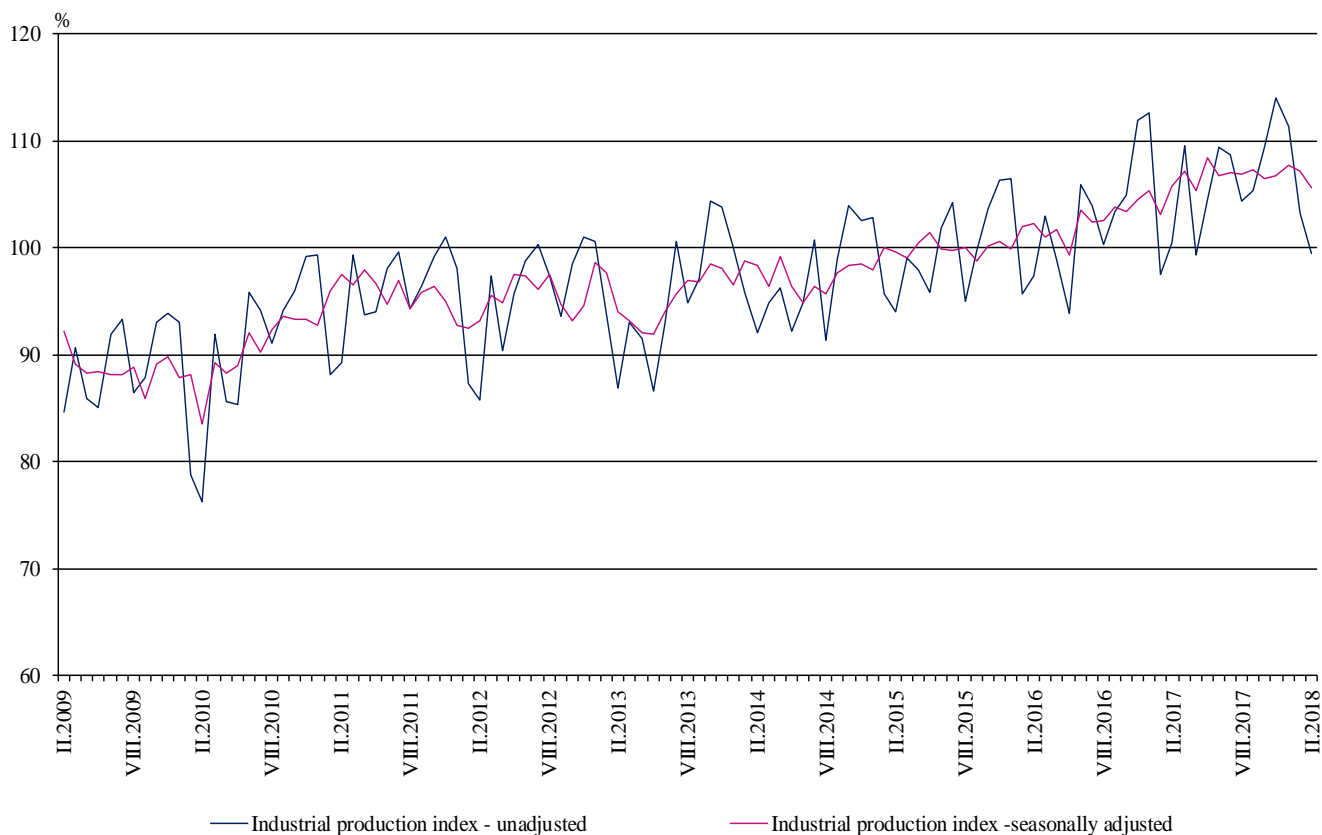
Industrial production indices are calculated at constant base year that is to say they are weighted with the structure of the value added at factor costs in the base year.

³ Seasonal adjustment is a statistical method, which eliminates the seasonal component of time series.

⁴ Working day adjustment is an adjustment for variations caused by calendar effects, different number of calendar and working days in the months, national holidays and outliers (for example the presence of more non-working days in May could contribute to the decline in the production in some activities).



Figure 1. Industrial Production Indices (2015 = 100)



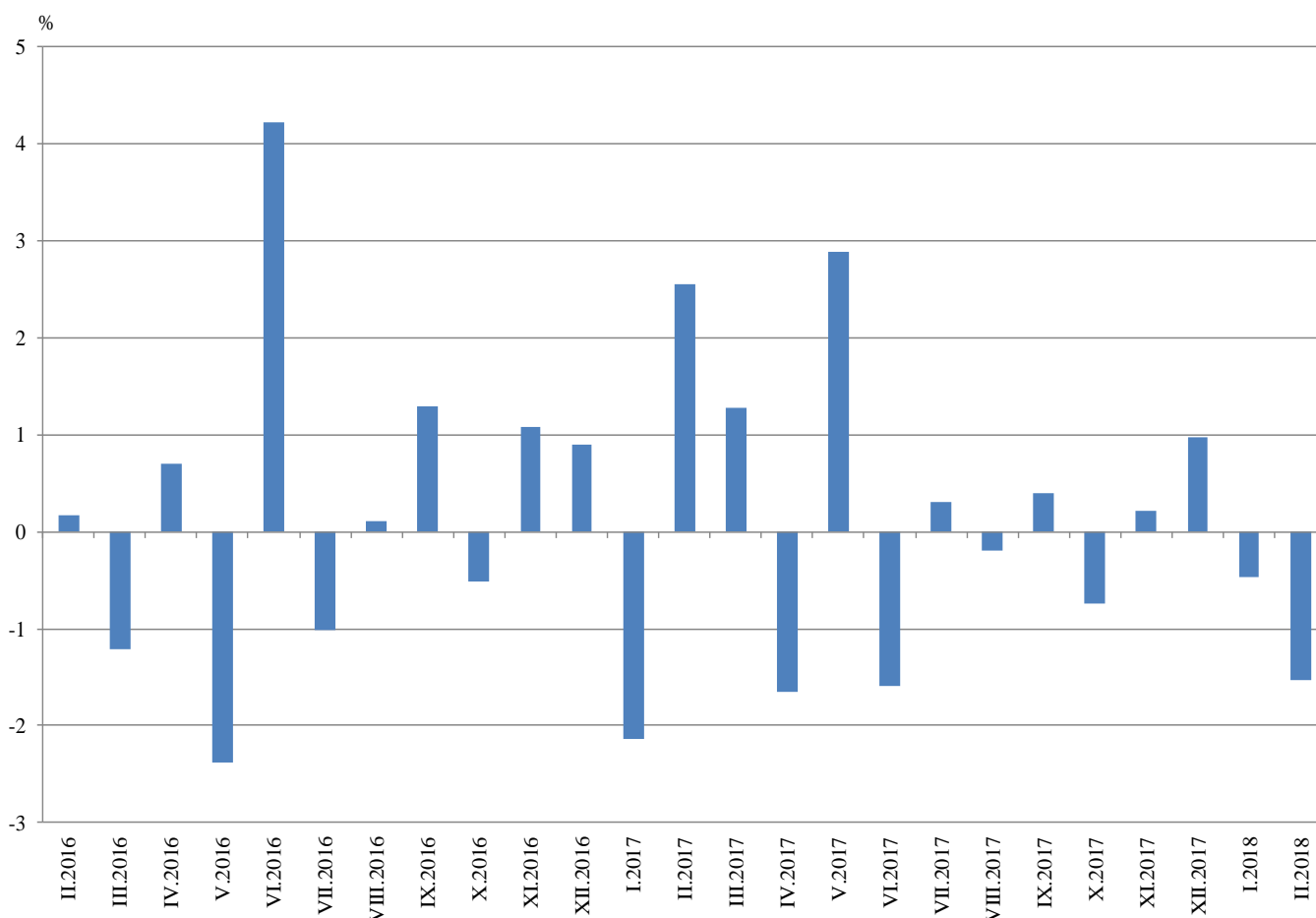
Monthly comparisons

In February 2018 as compared to January 2018, the seasonally adjusted Industrial Production Index rose in the electricity, gas, steam and air conditioning supply by 1.4%, while the production decreased in the mining and quarrying industry by 4.3% and in the manufacturing by 3.2%.

The most significant production decreases in the manufacturing were registered in the manufacture of other non-metallic mineral products by 9.2%, in the manufacture of wood and of products of wood and cork, except furniture; manufacture of articles of straw and plaiting materials by 9.1%, in the printing and reproduction of recorded media by 8.2%, in the manufacture of food products by 7.0%. There were increases in the manufacture of tobacco products by 14.1%, in the manufacture of leather and related products by 8.5%, in the manufacture of other transport equipment by 4.0%.



**Figure 2. Changes of Industrial Production Indices compared to the previous month
(Seasonally adjusted)**



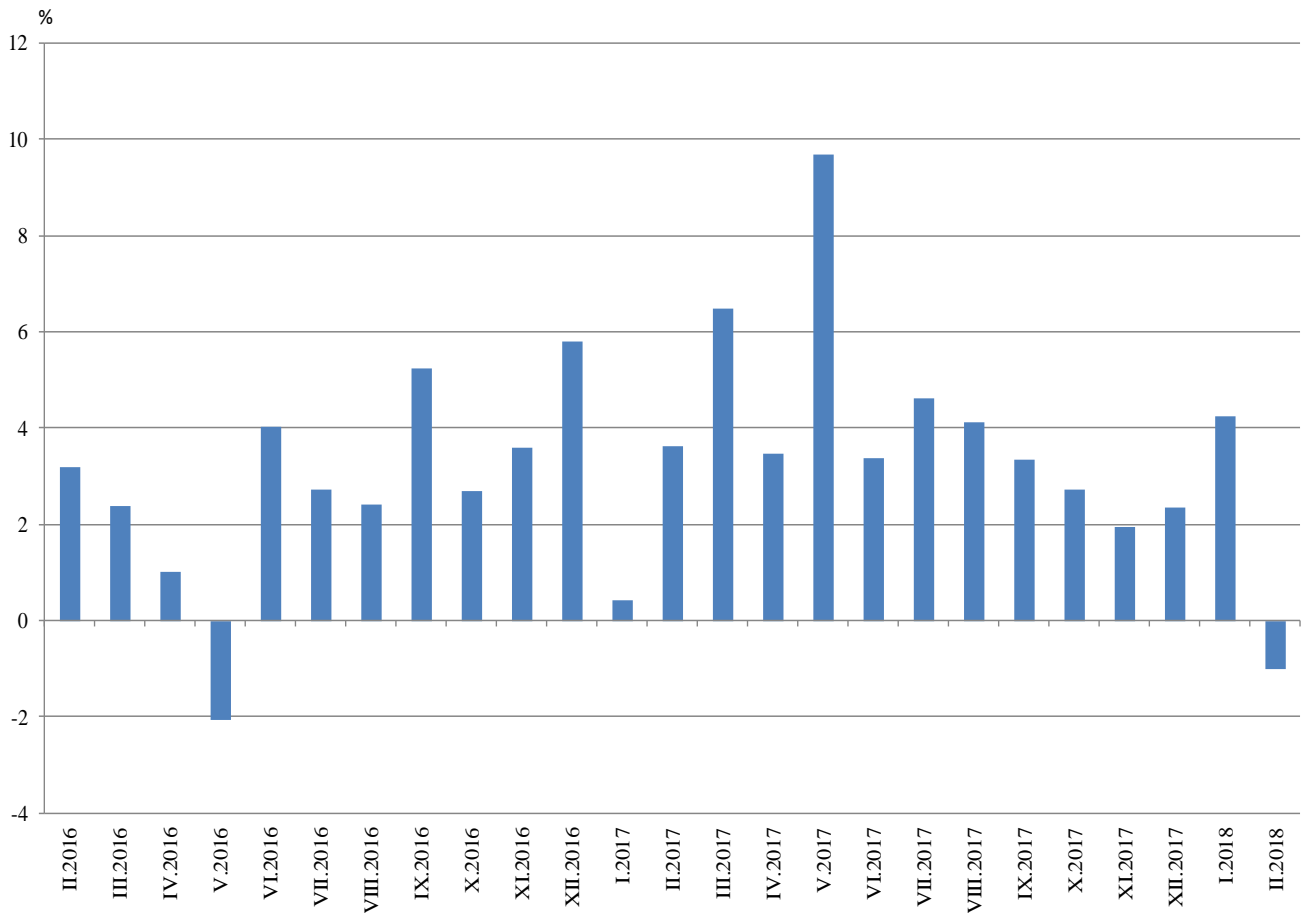
Annual comparisons

On annual basis in February 2018 Industrial Production Index calculated from working day adjusted data rose in the manufacturing by 1.0%, while the production fell in the mining and quarrying industry by 14.2% and in the electricity, gas, steam and air conditioning supply by 2.3%.

In the manufacturing, the more considerable increases compared to the same month of the previous year were registered in the manufacture of other transport equipment by 62.2%, in the manufacture of motor vehicles, trailers and semi-trailers by 15.8%, in the repair and installation of machinery and equipment by 11.5%, in the manufacture of furniture by 10.3%. Decreases were seen in the manufacture of wood and of products of wood and cork, except furniture; manufacture of articles of straw and plaiting materials by 18.7%, in the manufacture of textiles by 10.4%, in the manufacture of chemicals and chemical products by 7.9%, in the printing and reproduction of recorded media by 7.8%.



**Figure 3. Changes of Industrial Production Indices compared to the same month of the previous year
(Working day adjusted)**



Annex

Table 1
Changes of Industrial Production Indices compared to the previous month^{1,2}
(Per cent)

Economic activities	NACE.BG - 2008	2017				2018	
		IX	X	XI	XII	I	II
Industry	B_TO_E36	0.4	-0.7	0.2	1.0	-0.5	-1.5
Mining and quarrying	B	-2.5	-4.7	-1.4	-2.5	0.6	-4.3
Mining of coal and lignite	B05	0.5	-1.7	-15.1	8.3	-5.1	-8.6
Extraction of crude petroleum and natural gas	B06
Mining of metal ores	B07	-2.0	-7.3	2.1	-8.4	13.1	-1.3
Other mining and quarrying	B08	3.8	2.7	12.2	-5.6	26.4	-6.6
Mining support service activities	B09
Manufacturing	C	0.9	0.0	0.8	1.9	0.0	-3.2
Manufacture of food products	C10	0.9	1.0	0.3	5.4	-0.6	-7.0
Manufacture of beverages	C11	5.4	1.7	-7.1	3.7	5.8	-6.8
Manufacture of tobacco products	C12	-3.6	-4.8	-2.4	-9.8	-0.4	14.1
Manufacture of textiles	C13	4.0	-1.9	3.4	-1.9	-3.6	-1.6
Manufacture of wearing apparel	C14	3.8	-1.3	3.5	-4.0	-3.4	1.8
Manufacture of leather and related products	C15	2.8	5.8	-0.7	8.2	-8.6	8.5
Manufacture of wood and of products of wood and cork, except furniture; manufacture of articles of straw and plaiting materials	C16	3.7	-0.3	0.7	3.8	0.3	-9.1
Manufacture of paper and paper products	C17	-1.3	3.0	-0.4	-7.1	7.0	-4.6
Printing and reproduction of recorded media	C18	0.4	2.3	-3.0	-0.9	6.9	-8.2
Manufacture of coke and refined petroleum products	C19
Manufacture of chemicals and chemical products	C20	-3.4	0.1	-1.1	1.4	-8.2	-3.7
Manufacture of basic pharmaceutical products and pharmaceutical preparations	C21	-2.6	-8.8	14.0	2.5	-5.0	-5.1
Manufacture of rubber and plastic products	C22	2.5	-0.5	0.0	2.9	0.7	-1.2
Manufacture of other non-metallic mineral products	C23	-1.5	3.1	0.8	-1.8	13.4	-9.2
Manufacture of basic metals	C24	6.3	2.5	3.2	3.7	-2.4	-3.9
Manufacture of fabricated metal products, except machinery and equipment	C25	-9.0	8.7	-1.4	-9.1	4.7	-2.1
Manufacture of computer, electronic and optical products	C26	-11.8	12.7	1.6	-3.4	5.4	-1.2
Manufacture of electrical equipment	C27	6.8	-0.8	-2.2	5.3	-1.9	-4.8
Manufacture of machinery and equipment n.e.c.	C28	0.5	2.9	-0.1	3.7	-2.0	-5.9
Manufacture of motor vehicles, trailers and semi-trailers	C29	5.9	4.4	-0.9	0.7	3.0	0.0
Manufacture of other transport equipment	C30	8.8	-1.3	18.9	-21.0	33.1	4.0
Manufacture of furniture	C31	-1.8	-1.0	1.9	10.7	2.0	-1.9
Other manufacturing	C32	-1.6	-7.7	10.0	5.5	-0.2	-6.6
Repair and installation of machinery and equipment	C33	10.3	-14.1	17.9	4.5	0.9	-4.4
Electricity, gas, steam and air conditioning supply	D	-0.7	-4.3	1.9	0.6	1.3	1.4
Electricity, gas, steam and air conditioning supply	D35	-0.7	-4.3	1.9	0.6	1.3	1.4

¹ Seasonally adjusted.

² ‘.’ - Confidential data.

Table 2

Changes of Industrial Production Indices compared to the same month of the previous year^{1,2}
(Per cent)

Economic activities	NACE.BG - 2008	2017				2018	
		IX	X	XI	XII	I	II
Industry	B_TO_E36	3.4	2.7	1.9	2.3	4.3	-1.0
Mining and quarrying	B	6.8	5.3	-6.8	-7.0	-3.5	-14.2
Mining of coal and lignite	B05	14.3	0.3	-23.1	-8.2	-9.0	-31.7
Extraction of crude petroleum and natural gas	B06
Mining of metal ores	B07	6.3	13.8	1.3	-3.9	5.1	2.4
Other mining and quarrying	B08	-5.6	2.0	9.6	8.9	54.0	16.9
Mining support service activities	B09
Manufacturing	C	4.6	5.2	4.9	5.7	11.1	1.0
Manufacture of food products	C10	2.9	1.8	2.5	11.0	6.7	-0.3
Manufacture of beverages	C11	-3.6	-3.7	-13.3	-7.6	14.8	-7.2
Manufacture of tobacco products	C12	0.6	-15.0	-23.9	-40.1	-39.2	-7.0
Manufacture of textiles	C13	0.5	-2.0	2.2	6.7	3.0	-10.4
Manufacture of wearing apparel	C14	-6.4	-8.1	7.1	0.4	-9.9	-6.5
Manufacture of leather and related products	C15	-13.0	0.1	-8.3	9.4	-5.4	5.1
Manufacture of wood and of products of wood and cork, except furniture; manufacture of articles of straw and plaiting materials	C16	-0.3	-5.9	-2.8	1.8	-0.5	-18.7
Manufacture of paper and paper products	C17	-2.4	0.5	-6.1	-7.7	1.1	-4.8
Printing and reproduction of recorded media	C18	-1.6	-3.0	-7.0	-1.7	2.0	-7.8
Manufacture of coke and refined petroleum products	C19
Manufacture of chemicals and chemical products	C20	10.9	6.8	13.1	24.5	3.6	-7.9
Manufacture of basic pharmaceutical products and pharmaceutical preparations	C21	12.9	-6.3	13.7	22.5	2.7	2.5
Manufacture of rubber and plastic products	C22	15.7	10.5	7.2	13.0	9.6	5.8
Manufacture of other non-metallic mineral products	C23	8.7	8.6	9.2	5.5	39.5	7.0
Manufacture of basic metals	C24	28.7	5.2	11.4	26.0	22.4	-2.9
Manufacture of fabricated metal products, except machinery and equipment	C25	-11.1	21.2	0.7	-16.7	21.6	-5.9
Manufacture of computer, electronic and optical products	C26	4.5	10.3	15.4	18.3	0.7	10.1
Manufacture of electrical equipment	C27	9.4	8.0	5.0	15.7	11.1	2.5
Manufacture of machinery and equipment n.e.c.	C28	18.8	17.3	9.5	13.1	16.9	2.0
Manufacture of motor vehicles, trailers and semi-trailers	C29	13.9	15.7	11.6	11.6	17.5	15.8
Manufacture of other transport equipment	C30	10.1	16.7	47.1	-2.5	33.0	62.2
Manufacture of furniture	C31	-5.9	-8.4	-9.8	9.9	15.9	10.3
Other manufacturing	C32	8.4	6.8	3.3	7.2	-9.5	-2.7
Repair and installation of machinery and equipment	C33	-0.6	-7.1	12.0	12.3	30.0	11.5
Electricity, gas, steam and air conditioning supply	D	-3.3	-8.3	-4.6	-4.9	-8.4	-2.3
Electricity, gas, steam and air conditioning supply	D35	-3.3	-8.3	-4.6	-4.9	-8.4	-2.3

¹ Working day adjusted.

² ‘.’ - Confidential data.

Table 3

Industrial Production Indices¹
(Seasonally adjusted, 2015 = 100)

NACE.BG - 2008	2017											2018	
	II	III	IV	V	VI	VII	VIII	IX	X	XI	XII	I	II
B_TO_E36	105.8	107.2	105.4	108.4	106.7	107.0	106.8	107.3	106.5	106.7	107.7	107.2	105.6
B	112.4	105.7	97.9	105.1	107.2	104.0	112.3	109.5	104.4	102.9	100.4	101.0	96.6
B05	107.3	100.6	96.0	107.8	101.5	92.7	94.7	95.2	93.6	79.4	86.0	81.6	74.6
B06
B07	120.5	116.0	102.9	107.4	113.5	118.2	129.5	126.9	117.5	120.0	110.0	124.4	122.8
B08	91.7	81.2	79.3	81.2	87.6	76.9	79.5	82.5	84.8	95.1	89.8	113.5	106.0
B09
C	107.7	111.0	108.6	111.9	109.7	110.4	110.1	111.1	111.1	112.0	114.2	114.2	110.5
C10	102.4	103.1	99.3	105.2	110.3	106.9	102.8	103.7	104.8	105.1	110.7	110.1	102.4
C11	102.1	100.9	94.2	97.0	95.5	99.8	93.9	99.0	100.6	93.5	97.0	102.6	95.6
C12	67.8	74.8	72.5	81.1	76.4	60.9	71.4	68.8	65.5	64.0	57.7	57.4	65.5
C13	106.5	100.4	100.0	100.5	100.6	98.6	97.6	101.6	99.7	103.0	101.1	97.5	95.9
C14	100.4	105.5	98.2	98.4	98.5	96.2	93.8	97.4	96.1	99.5	95.5	92.2	93.9
C15	94.3	102.1	96.7	101.2	96.4	82.7	84.7	87.1	92.2	91.5	99.0	90.4	98.1
C16	97.2	89.1	89.8	91.5	88.8	84.7	81.0	84.0	83.8	84.4	87.5	87.8	79.8
C17	105.3	105.0	99.2	105.5	101.2	98.9	102.6	101.2	104.3	103.9	96.5	103.2	98.5
C18	103.5	109.5	100.3	106.0	102.1	105.8	99.8	100.2	102.5	99.5	98.6	105.4	96.8
C19
C20	116.4	117.0	118.8	117.2	117.1	123.6	127.8	123.6	123.6	122.3	124.0	113.9	109.6
C21	98.7	103.4	93.4	106.0	111.2	112.7	111.0	108.1	98.6	112.4	115.2	109.5	103.9
C22	119.5	121.8	119.0	119.6	117.3	115.9	121.5	124.6	123.9	123.9	127.6	128.5	126.9
C23	98.8	103.7	100.0	100.9	98.4	99.6	102.5	101.0	104.1	104.9	103.0	116.8	106.1
C24	111.7	116.3	113.5	114.5	111.9	107.9	109.7	116.6	119.6	123.3	127.9	124.9	120.0
C25	133.8	137.2	154.5	142.4	131.3	156.3	138.7	126.3	137.2	135.3	123.0	128.7	126.1
C26	124.0	138.7	130.1	119.9	130.3	127.9	134.1	118.3	133.4	135.6	131.0	138.1	136.4
C27	101.2	102.0	102.1	107.0	106.9	103.7	103.8	110.8	109.9	107.5	113.2	111.1	105.7
C28	111.6	112.7	114.2	126.4	114.4	117.6	117.0	117.5	121.0	120.9	125.3	122.8	115.6
C29	113.4	118.9	110.8	117.6	111.9	117.3	116.1	123.0	128.4	127.2	128.1	132.0	132.0
C30	86.2	91.3	83.8	97.5	102.1	91.2	90.7	98.7	97.4	115.8	91.5	121.8	126.7
C31	102.0	107.9	107.2	109.6	104.9	102.1	102.3	100.5	99.5	101.4	112.2	114.4	112.2
C32	138.8	135.5	129.8	125.7	131.9	115.4	138.0	135.8	125.3	137.8	145.4	145.2	135.5
C33	96.1	95.5	96.6	110.9	97.2	120.1	95.2	104.9	90.2	106.4	111.1	112.1	107.2
D	97.8	93.1	95.5	97.7	96.8	96.3	95.2	94.5	90.5	92.2	92.7	93.9	95.2
D35	97.8	93.1	95.5	97.7	96.8	96.3	95.2	94.5	90.5	92.2	92.7	93.9	95.2

¹ '..' - Confidential data.

Table 4

Industrial Production Indices¹
(Working day adjusted, 2015 = 100)

NACE.BG - 2008	2015	2016	2017												2018	
	II	II	II	III	IV	V	VI	VII	VIII	IX	X	XI	XII	I	II	
B_TO_E36	94.0	97.0	100.5	108.7	102.0	103.9	108.5	110.6	103.1	106.9	109.6	113.1	113.6	102.4	99.5	
B	95.0	97.2	105.5	101.0	91.7	98.4	102.2	103.0	110.6	113.5	118.1	111.4	109.2	97.9	90.5	
B05	101.2	89.6	109.1	87.3	78.7	92.5	81.5	85.8	92.3	102.3	115.8	93.0	104.2	94.5	74.5	
B06	
B07	96.2	100.8	110.5	115.5	103.1	105.8	117.6	118.0	127.1	126.6	125.2	125.2	115.8	116.0	113.2	
B08	65.6	75.9	67.7	73.3	78.6	84.7	96.8	85.6	87.4	89.9	98.4	107.8	93.2	70.4	79.1	
B09	
C	88.7	94.5	98.2	112.8	108.4	111.8	116.6	117.8	106.1	112.7	116.3	118.2	113.5	99.3	99.2	
C10	92.3	90.5	88.6	101.1	95.2	103.4	113.7	108.5	106.0	111.6	115.5	112.6	115.6	92.8	88.3	
C11	70.9	72.2	71.7	95.2	96.5	103.5	115.7	127.8	118.0	107.5	89.8	82.6	100.7	63.3	66.5	
C12	87.2	85.2	55.9	82.2	68.9	85.7	84.2	66.4	73.9	67.3	63.1	62.6	56.3	36.0	52.0	
C13	88.6	105.5	104.7	112.1	110.5	115.5	111.7	102.3	76.7	97.7	102.4	107.4	86.6	82.4	93.8	
C14	94.1	102.0	98.6	102.3	90.4	89.7	107.0	110.5	90.6	95.0	96.9	99.3	95.7	95.1	92.2	
C15	99.2	93.4	91.8	103.0	84.5	86.0	100.4	97.6	82.3	94.7	96.3	93.4	92.9	90.7	96.5	
C16	89.2	83.3	85.2	88.0	88.6	91.4	96.3	92.0	82.0	87.9	92.5	91.5	81.5	70.1	69.2	
C17	88.3	98.5	99.7	108.8	100.1	107.7	106.8	102.5	102.0	102.0	105.4	104.6	90.0	100.4	94.9	
C18	89.5	102.3	95.6	110.6	96.0	102.6	103.7	105.6	93.2	99.4	109.8	112.9	107.6	94.5	88.1	
C19	
C20	87.6	97.9	111.7	124.2	124.9	118.0	116.5	127.8	126.6	121.1	122.6	126.0	124.2	105.7	102.9	
C21	91.2	110.0	100.1	110.6	92.1	103.4	119.4	107.9	97.1	105.0	102.2	119.4	118.9	102.5	102.6	
C22	88.5	97.3	108.7	125.0	121.5	120.7	126.1	123.8	119.2	129.4	137.0	128.1	107.6	113.1	114.9	
C23	72.8	84.9	79.5	101.2	104.4	109.1	106.9	108.4	108.8	109.2	116.7	113.3	91.9	80.7	85.0	
C24	101.8	85.5	108.2	127.3	112.5	114.7	118.1	111.6	96.4	119.5	124.7	127.1	115.4	126.5	105.0	
C25	88.1	98.4	117.2	138.4	153.6	137.6	141.2	163.6	137.6	130.5	139.3	146.4	146.2	93.1	110.4	
C26	95.3	89.8	114.5	147.0	129.0	118.9	137.0	130.8	117.2	113.4	139.8	144.6	138.9	129.7	126.1	
C27	92.3	103.8	97.8	107.4	99.7	105.1	113.0	110.0	89.8	112.7	122.3	116.9	102.4	103.0	100.2	
C28	99.2	97.1	107.9	120.4	115.0	127.6	123.6	125.0	104.5	115.7	123.7	128.9	120.6	108.2	110.1	
C29	97.5	110.6	114.7	128.7	111.4	118.3	113.8	115.3	95.6	122.9	138.3	135.3	116.9	134.8	132.8	
C30	84.3	102.0	79.2	100.9	85.5	110.4	107.2	86.9	77.6	90.9	90.8	115.5	89.1	115.2	128.5	
C31	90.4	94.7	90.6	107.3	105.9	108.1	106.6	104.5	101.7	103.8	108.2	111.1	115.0	98.1	99.9	
C32	74.3	98.9	120.2	136.9	125.4	125.3	149.4	114.1	141.7	144.4	143.2	145.5	129.3	125.1	116.9	
C33	84.5	72.7	80.1	92.7	85.8	104.9	98.1	123.9	92.4	110.5	94.4	124.4	152.3	79.1	89.3	
D	111.7	105.9	107.1	99.8	85.9	80.1	84.1	89.1	87.3	83.0	83.9	98.3	116.3	116.9	104.7	
D35	111.7	105.9	107.1	99.8	85.9	80.1	84.1	89.1	87.3	83.0	83.9	98.3	116.3	116.9	104.7	